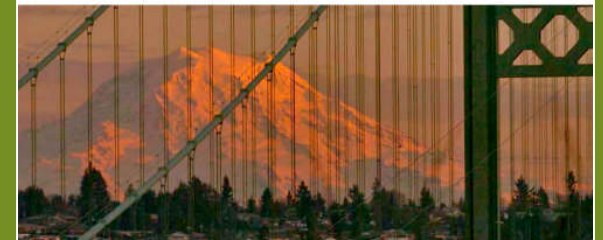


Transportation 2040

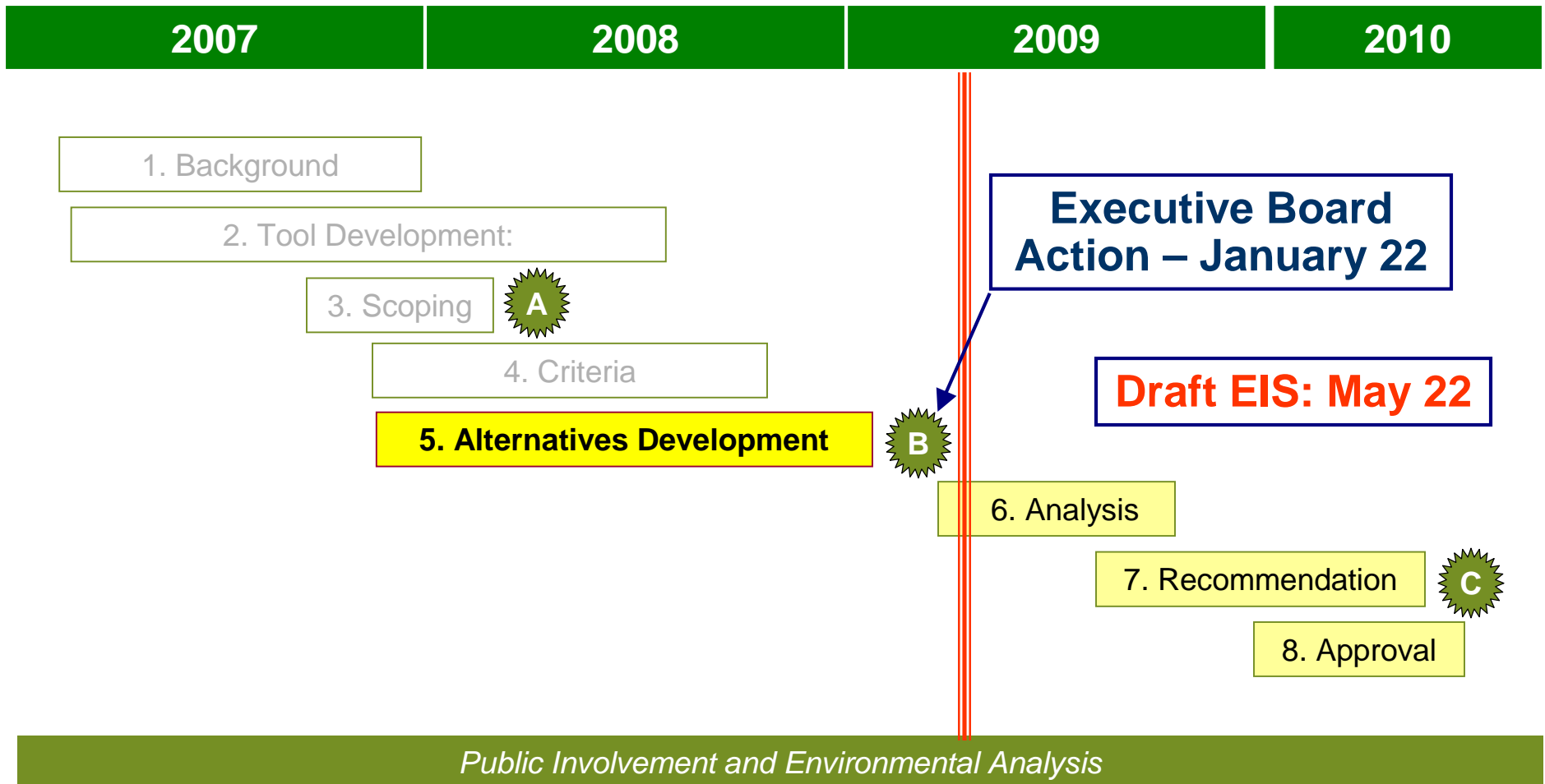
Update to the Regional Transportation Plan

Status Report to the Economic Development District Board

February 4, 2009



TRANSPORTATION 2040 – Schedule



Key Decision Points

Transportation 2040

Objectives of the Transportation Plan Update

- **Develop transportation strategies to address the results of the VISION 2040 update, the Regional Economic Strategy, and the latest 2040 growth forecasts for person and freight travel demand.**
- **Make progress on the major transportation system issues facing the region and inform near term project decisions.**

Key Issues for the Plan Update

Develop alternatives that address key issues and include a range of strategies to meet the region's transportation needs:

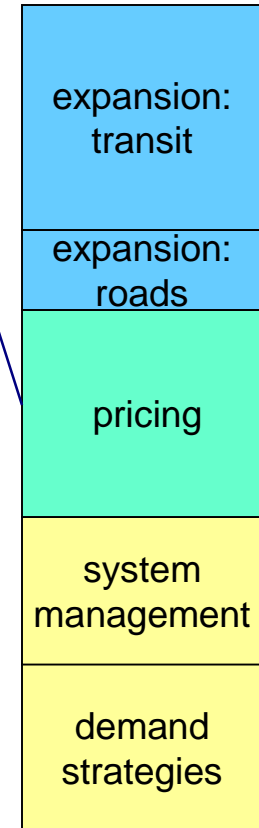
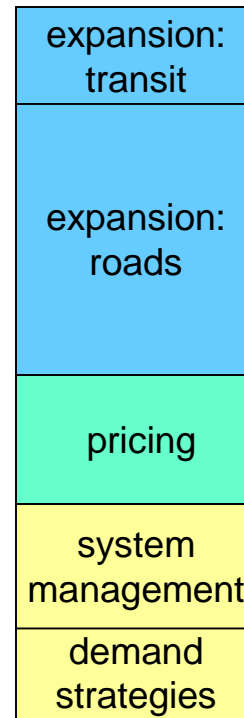
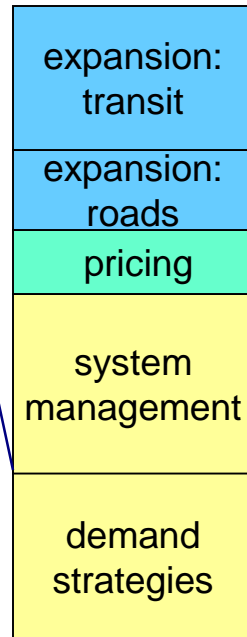
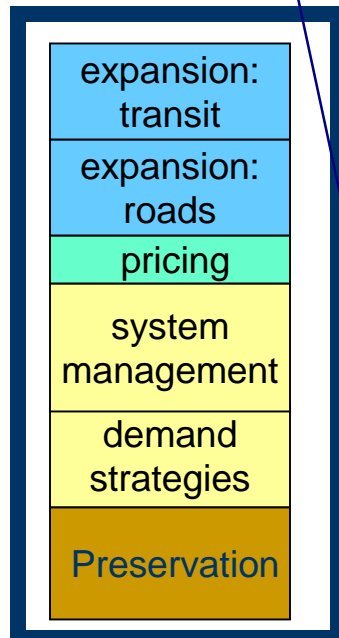
- **Land Use - Better integrate transportation and land use decisions through implementation of Vision 2040.**
- **Economy - Support the Regional Economic Strategy.**
- **Congestion and Mobility – Reduce congestion on facilities for all types of freight and person travel.**
- **Equity and Special Needs Transportation – Equitably make transportation investments across the region and improve access to jobs and services for people with special needs.**
- **Safety & Health - Improve the safety of the transportation system and assist the state in meeting the objectives of “Target Zero”*and encouraging healthy lifestyles.**
- **Security – Support the region's ability to deal with emergencies.**
- **Energy and the Environment – Reduce the causes of climate change and water quality impacts on Puget Sound**
- **Preservation of the System – Make improvements to an aging infrastructure.**
- **Transportation Funding – Support the development of sustainable transportation funding.**
- **Project Prioritization - Make the most of scarce transportation dollars.**

Plan Alternatives

**Strategic
Expansion**

**Improve
Efficiency**

Pricing



Core Concepts apply to all alternatives: Safety, Security, Special Needs, etc.

Baseline

1

2

3

4

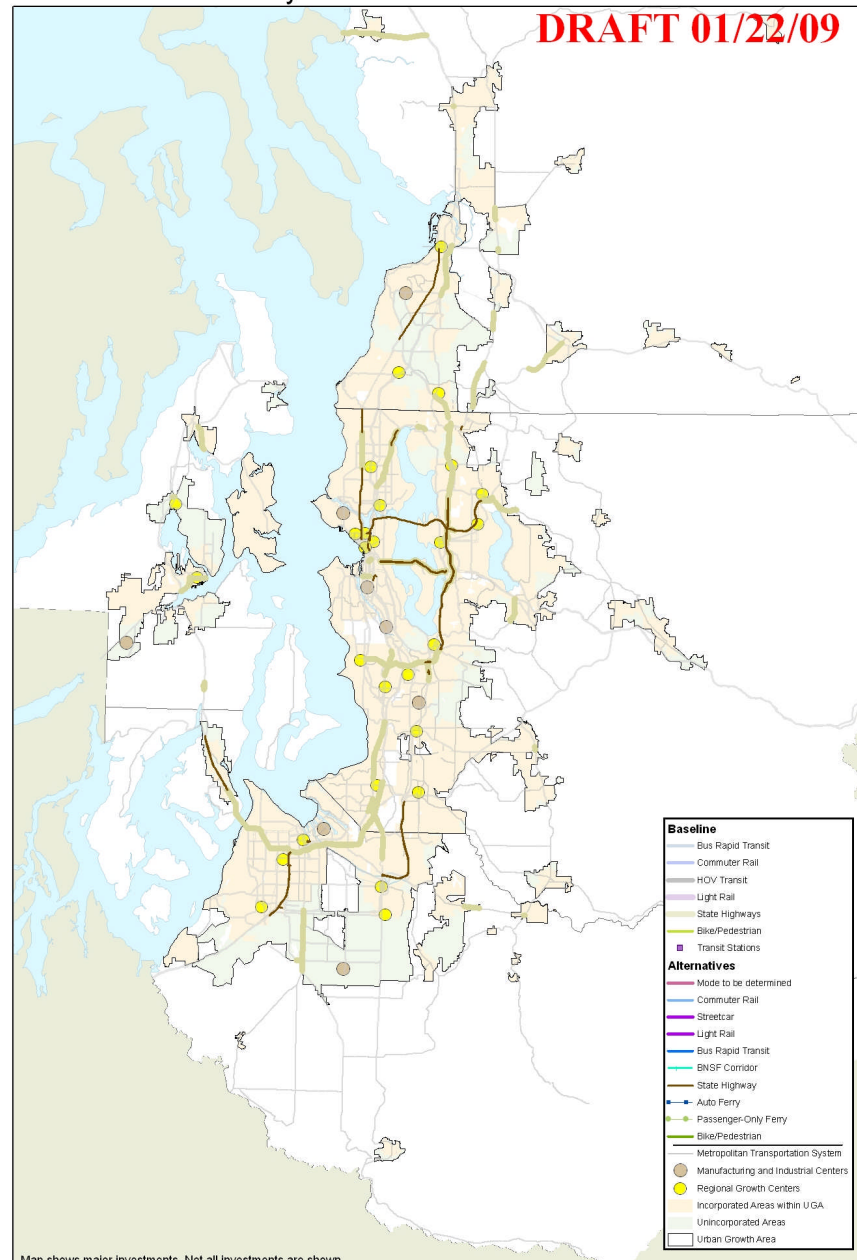
5

ALTERNATIVE 5

Highway Improvements

ALTERNATIVE 5:
Provide Accessibility and Reduce Carbon Emissions

DRAFT 01/22/09



Map shows major investments. Not all investments are shown.

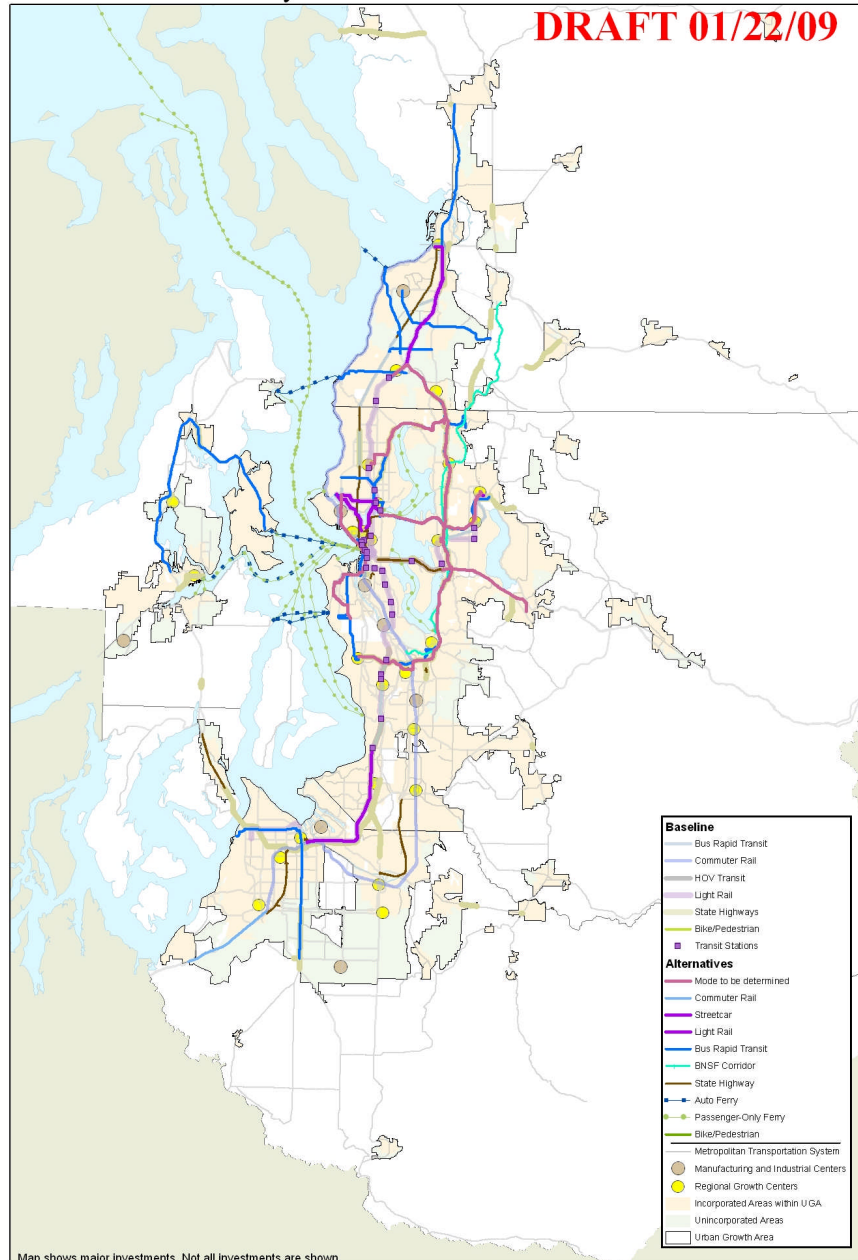
ALTERNATIVE 5

Highway
Improvements

Transit
Improvements

ALTERNATIVE 5:
Provide Accessibility and Reduce Carbon Emissions

DRAFT 01/22/09



Map shows major investments. Not all investments are shown.

ALTERNATIVE 5

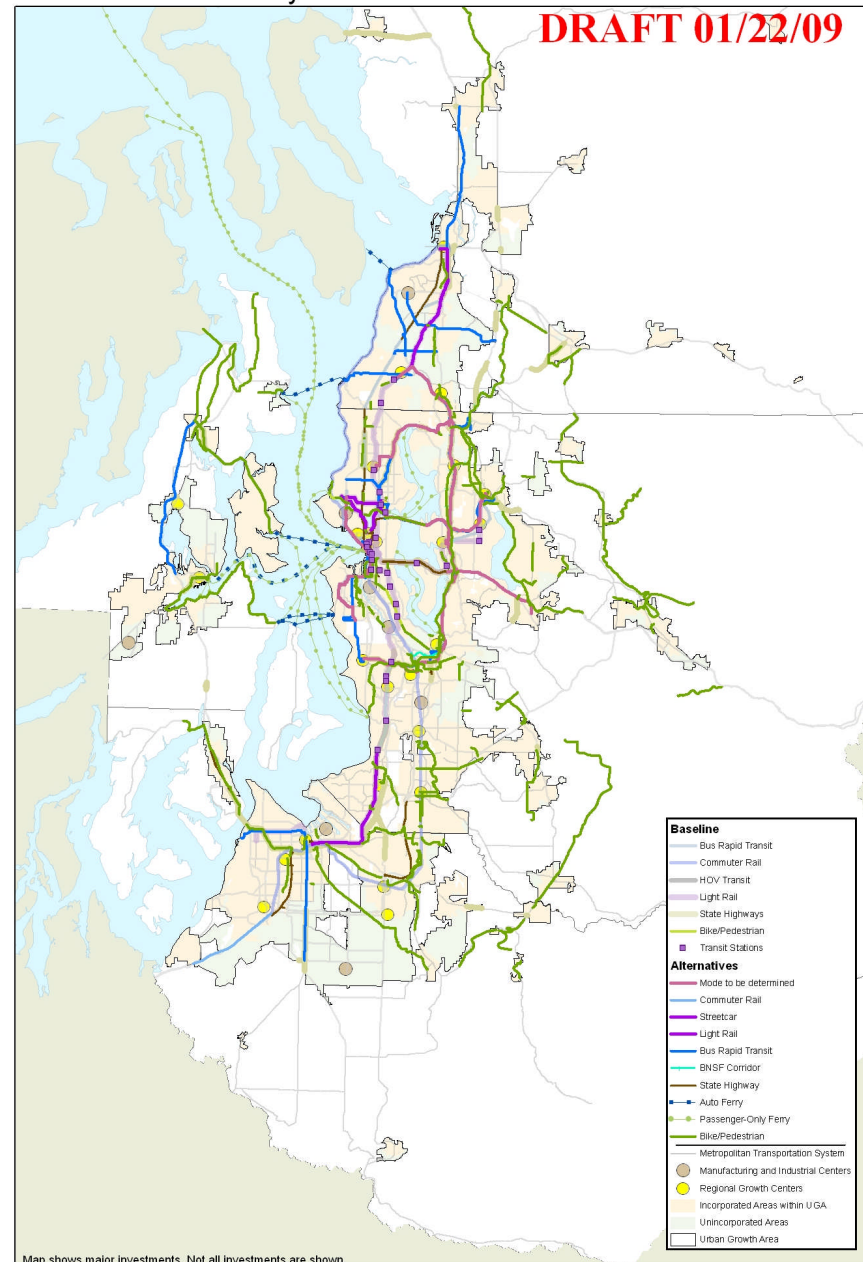
Highway
Improvements

Transit
Improvements

Bike and
Pedestrian
Improvements

ALTERNATIVE 5: Provide Accessibility and Reduce Carbon Emissions

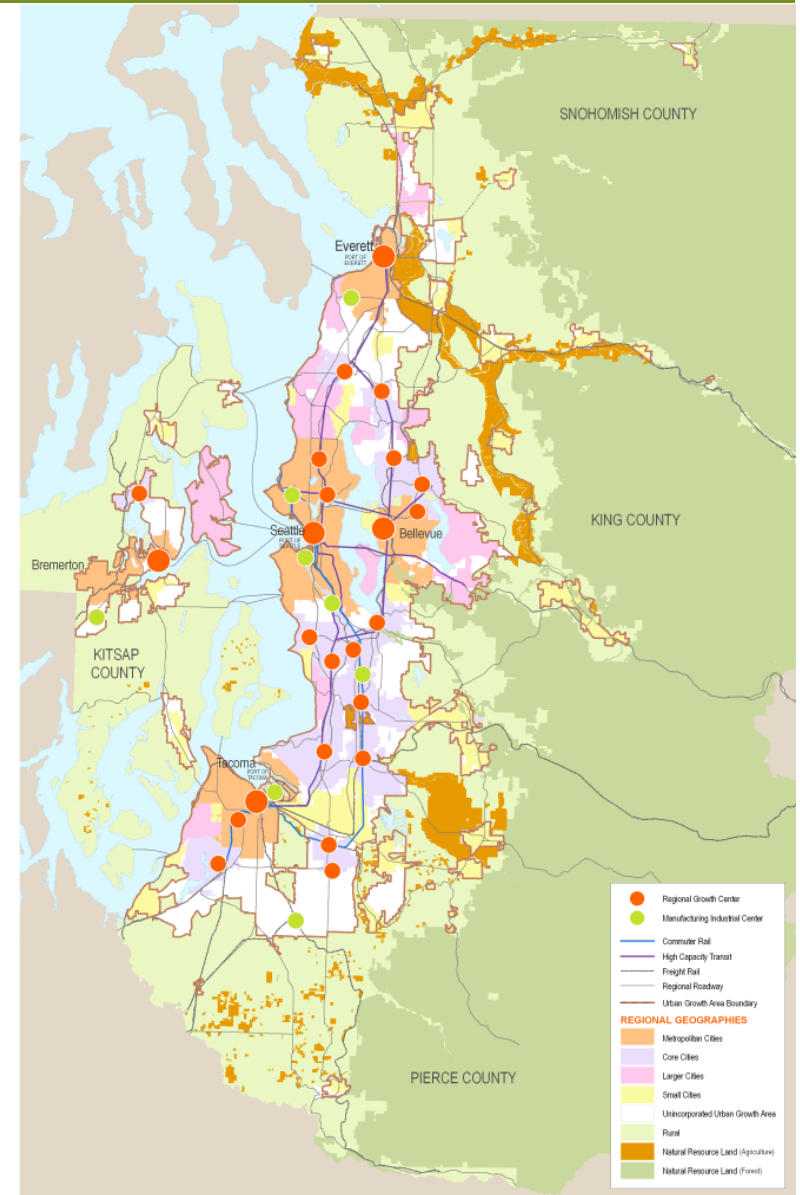
DRAFT 01/22/09



Map shows major investments. Not all investments are shown.

VISION 2040 and Transportation 2040: an Integrated Evaluation Framework

- **Policy Analysis** will assure alternatives are consistent with VISION 2040 and meet regional goals
- **Technical Analysis** will compare and evaluate alternatives using quantitative methods (criteria)
- **Environmental Review** (done within the context of the EIS) will assess the alternatives based on environmental impacts



Information & Contacts

Transportation 2040 www.psrc.org/projects/trans2040/index.htm

Mike Cummings 1-206-464-6172
mcummings@psrc.org

Stephen Kiehl 1-206-971-3290
skiehl@psrc.org

Alternative 5 (part 1)

Provide Accessibility and Reduce Carbon Emissions

- **Major shift in priorities:**

- **Meet state emission goals (GHG)**
- **Reduce VMT (vehicle miles traveled)**
- **Reduce use of fossil fuel (technology, incentives)**
- **Move from fuel-based to user-based financing (tolls)**
- **Offer significantly more travel choices**

Toll entire system (highways and arterials)

(or other form of user-based financing i.e. VMT charge)

- **Highway improvements:**

- **SR 16 - HOV**
- **SR 9 (north of SR 531)**
- **US 2**



Pricing

**Strategic
Expansion**

**Improve
Efficiency**

Alternative 5 (part 2)

Provide Accessibility and Reduce Carbon Emissions

- **Pedestrian & bike improvements**
 - **Ped/bike network in all regional growth centers**
- **Trails**
 - **Regional trail system**
- **Increase transit service by double population growth**
- **Transit investments:**
 - **BRT on SR 305 – Winslow to SR 3**
 - **BRT on SR 3 – Bremerton to SR 305**
 - **LINK extends to Everett, Tacoma, downtown Redmond, Issaquah**
 - **Light rail on I-405 corridor (Lynnwood to Tukwila)**
 - **BRT or light rail from Seattle to Ballard and West Seattle**
 - **Commuter rail along BNSF corridor**



**Strategic
Expansion**

**Improve
Efficiency**