

Bicycle/Pedestrian Advisory Committee Committee Charter April 2010

Committee Background/Mission

The Bicycle/Pedestrian Advisory Committee (BPAC) was originally established in 2001 to provide recommendations and oversight for the development of the non-motorized components of the Regional Transportation Plan. Upon completion of the Plan, the Committee was formalized to play a longer-term role as an advisory committee to the Regional Council on a variety of bicycle and pedestrian-related issues.

Committee Structure:

The BPAC is composed of regional technical experts including local agency nonmotorized staff, advocacy organizations and citizens. The BPAC Technical Advisory Committee (BPAC TAC) is a subcommittee of the BPAC. This group meets on an "as needed" basis to provide technical expertise on nonmotorized transportation planning issues. The BPAC reports to the Regional Staff Committee (RSC). The RSC provides technical support to the Transportation Policy Board (TPB). As deemed necessary, the BPAC provides direct updates on its work to the TPB. Figure 1 illustrates the relationship of the PSRC advisory committees, the Regional Staff Committee and the Transportation Policy Board.

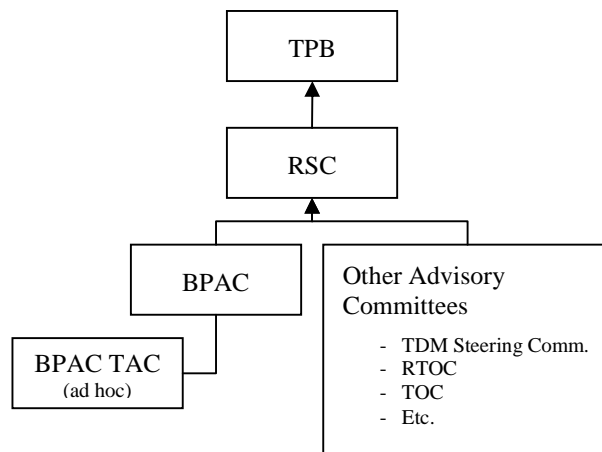


FIGURE 1

In any given year the BPAC work program may include the contribution of professional expertise on:

- Update the Regional Bicycle and Pedestrian Implementation Strategy
- Development, implementation and monitoring of the Metropolitan Transportation Plan and ongoing regional planning.
- Transportation Improvement Program project selection policy framework
- Enhancements Program project selection policy framework
- Update of the comprehensive plan certification and review process
- Design guidelines for regional growth centers and transit station areas
- Methodologies for measuring existing bicycle and pedestrian demand
- Outreach and education on the value and benefits of non-motorized transportation
- Best practices for developing bicycle, accessibility and pedestrian-friendly communities
- Liaison between bicycle/pedestrian NGO's, local government and regional and state agencies

Membership

Committee membership is comprised of representatives from member jurisdictions and agencies, advocacy groups and interested citizens with an interest in non-motorized transportation planning from the Central Puget Sound region.

Leadership

A Chair and a Vice-Chair lead the Committee. Recommendations of the BPAC are made through consensus. The BPAC is also a forum for sharing on regional non-motorized transportation projects. The Chair and Vice Chair positions are for a term of two years. The appointments are made through a consensus of the Committee. There will be a bi-annual review of leadership. The Chair (or the Vice-chair in the Chair's absence) facilitates Committee meetings. Puget Sound Regional Council will staff and support the Committee, which includes the development and mailing of agendas and supporting materials.

Conduct of Activities

The Bicycle/Pedestrian Advisory Committee meets bi-monthly on the third Wednesday at the Regional Council. The BPAC TAC meets "as-needed" on the alternating months from the full BPAC meetings.