

## Changes in Minority Population in the Puget Sound Region, 2000–2010

The four-county Puget Sound region has grown by more than 415,000 persons since 2000 and nearly all of that growth (92%) has been among the minority segments of the population. Total minorities increased by nearly 50% since 2000, with Hispanics/Latinos (who can be of any race) experiencing the largest increase, 89%, of any segment of the population. While most areas saw increases, the largest jumps occurred in south King County, southwest Snohomish County, and in Pierce County.

These findings come from a comparison of newly released 2010 Census redistricting data (P.L. 94-171) and data from the 2000 Census. Minority in this discussion is defined as any person of non-Caucasian race or of Hispanic origin.

The region's total population increased by 23% (or 509,000) in the 1980s, 19% (or 527,000) in the 1990s, and 12.7% (or 415,000) in the 2000s (Table 1). The 2000s were bracketed by two recessions and job growth has been flat, which explains much of the slowdown in overall population growth in the past decade. The same trend is seen at the county level. For the minority population, there has been a much greater increase during each of the past three decades than for the general population, with the greatest increase in the 1990s. But consistent with overall population trends, the minority population growth rate slowed during the last decade compared to the 1990s.

The growth rate of the Hispanic population in the 1980s and 1990s was similar to the rate for minorities as a whole. During the 2000s, however, the Hispanic segment grew at a pace (89%) nearly twice as fast as the minority population as a whole (49%). Kitsap County, in fact, saw a larger increase among Hispanics between 2000 and 2010 (63.2%) than in the previous decade (55.8%).

Because of the 1997 revised federal standards on race, which allowed people to select more than one race, it's not possible to make such direct comparisons between pre-2000 and post-2000 numbers for the individual races.

### *What is a Minority?*

*There is no official definition of minority in the Census. For the purposes of this Trend, "minority population" has been calculated by subtracting the non-Hispanic white population from total population. Thus "minority population" includes non-white races and the Hispanic white population. The calculation for 1980 was a little more complicated because, unlike from later Censuses, there was no category of "Not of Hispanic origin: White." Instead, the number of "White of Spanish Origin" was subtracted from the total number of "White" and that result was subtracted from the total population to get total minorities.*

*Direct comparison of the individual race categories is not possible between the pre-2000 censuses and the last two censuses. Revised standards issued in 1997 now allow people to select more than one category for race. In addition, the sequence of the questions on race and Hispanic Origin as well as terminology changes to the response categories introduced uncertainties in any direct comparison.*

Puget Sound Regional Council

 information center

1011 Western Avenue, Suite 500 • Seattle, WA 98104  
206-464-7532 • info@psrc.org • psrc.org

Table 1. Total and Minority Population Change, 1980–2010

TOTAL POPULATION	Census Year				Percent Population Change		
	1980	1990	2000	2010	1980-1990	1990-2000	2000-2010
King	1,269,749	1,507,319	1,737,034	1,931,249	18.7%	15.2%	11.2%
Kitsap	147,152	189,731	231,969	251,133	28.9%	22.3%	8.3%
Pierce	485,643	586,203	700,820	795,225	20.7%	19.6%	13.5%
Snohomish	337,720	465,642	606,024	713,335	37.9%	30.1%	17.7%
<b>Region</b>	<b>2,240,264</b>	<b>2,748,895</b>	<b>3,275,847</b>	<b>3,690,942</b>	<b>22.7%</b>	<b>19.2%</b>	<b>12.7%</b>

TOTAL MINORITY	Census Year				Percent Population Change		
	1980	1990	2000	2010	1980-1990	1990-2000	2000-2010
King	162,024	252,129	461,907	679,949	55.6%	83.2%	47.2%
Kitsap	13,137	21,881	41,218	52,388	66.6%	88.4%	27.1%
Pierce	65,632	97,807	167,886	236,065	49.0%	71.7%	40.6%
Snohomish	17,968	37,586	100,826	183,521	109.2%	168.3%	82.0%
<b>Region</b>	<b>258,761</b>	<b>409,403</b>	<b>771,837</b>	<b>1,151,923</b>	<b>58.2%</b>	<b>88.5%</b>	<b>49.2%</b>

Among the various race categories, the Asian and Native Hawaiian/Pacific Islander populations saw the biggest increases since 2000, at 51% and 65.5%, respectively (Table 2). Asians constitute the largest single minority racial group in the region at more than 405,000 (11% of the population) and 282,000 in King County (14.6%). This is an increase of 51% in the region since 2000. Blacks constitute the second largest minority racial group at nearly 200,000, an increase of 24.6%.

Table 2. Population Change by Race/Ethnicity, 2000–2010

County	Year	Total Population	Population of One Race									Total Minority
			Total	White	Black or African American	American Indian/Alaska Native	Asian	Pacific Islander	Some Other Race	Two or More Races	Hispanic or Latino	
KING	2000	1,737,034	1,666,535	1,315,507	93,875	15,922	187,745	9,013	44,473	70,499	95,242	461,907
	2010	1,931,249	1,834,450	1,325,845	119,801	16,147	282,075	14,486	76,096	96,799	172,378	679,949
	% change	11.2%	10.1%	0.8%	27.6%	1.4%	50.2%	60.7%	71.1%	37.3%	81.0%	47.2%
KITSAP	2000	231,969	221,195	195,481	6,648	3,760	10,192	1,805	3,309	10,774	9,609	41,218
	2010	251,133	236,684	207,369	6,650	4,040	12,396	2,310	3,919	14,449	15,686	52,388
	% change	8.3%	7.0%	6.1%	0.0%	7.4%	21.6%	28.0%	18.4%	34.1%	63.2%	27.1%
PIERCE	2000	700,820	664,977	549,369	48,730	9,963	35,583	5,922	15,410	35,843	38,621	167,886
	2010	795,225	740,878	590,040	53,998	10,879	47,501	10,588	27,872	54,347	72,849	236,065
	% change	13.5%	11.4%	7.4%	10.8%	9.2%	33.5%	78.8%	80.9%	51.6%	88.6%	40.6%
SNOHOMISH	2000	606,024	585,675	518,948	10,113	8,250	35,030	1,705	11,629	20,349	28,590	100,826
	2010	713,335	680,613	559,011	18,168	9,793	63,385	3,135	27,121	32,722	64,249	183,521
	% change	17.7%	16.2%	7.7%	79.6%	18.7%	80.9%	83.9%	133.2%	60.8%	124.7%	82.0%
REGION	2000	3,275,847	3,138,382	2,579,305	159,366	37,895	268,550	18,445	74,821	137,465	172,062	771,837
	2010	3,690,942	3,492,625	2,682,265	198,617	40,859	405,357	30,519	135,008	198,317	325,162	1,151,923
	% change	12.7%	11.3%	4.0%	24.6%	7.8%	50.9%	65.5%	80.4%	44.3%	89.0%	49.2%

Two other components of the population that have increased substantially since 2000 are those who reported “two or more races” and those who reported “some other race” (i.e., not one of the races listed above). In the latter case, the increase during the past decade has been more than 80%, the largest growth of any single racial component of the population.

Of the region’s four counties, Snohomish County experienced the largest increases in minority population. The “some other race” and Hispanic components have more than doubled, while Blacks, Asians, and Native Hawaiian/Pacific Islanders grew by about 80%.

Table 3 shows the change in percent share of population by race/ethnicity within each county between 2000 and 2010. Whites and American Indians, as a share of total population, have dropped, as has the Black population in Kitsap and Pierce counties.

Table 3. Change in Percent Distribution, 2000–2010

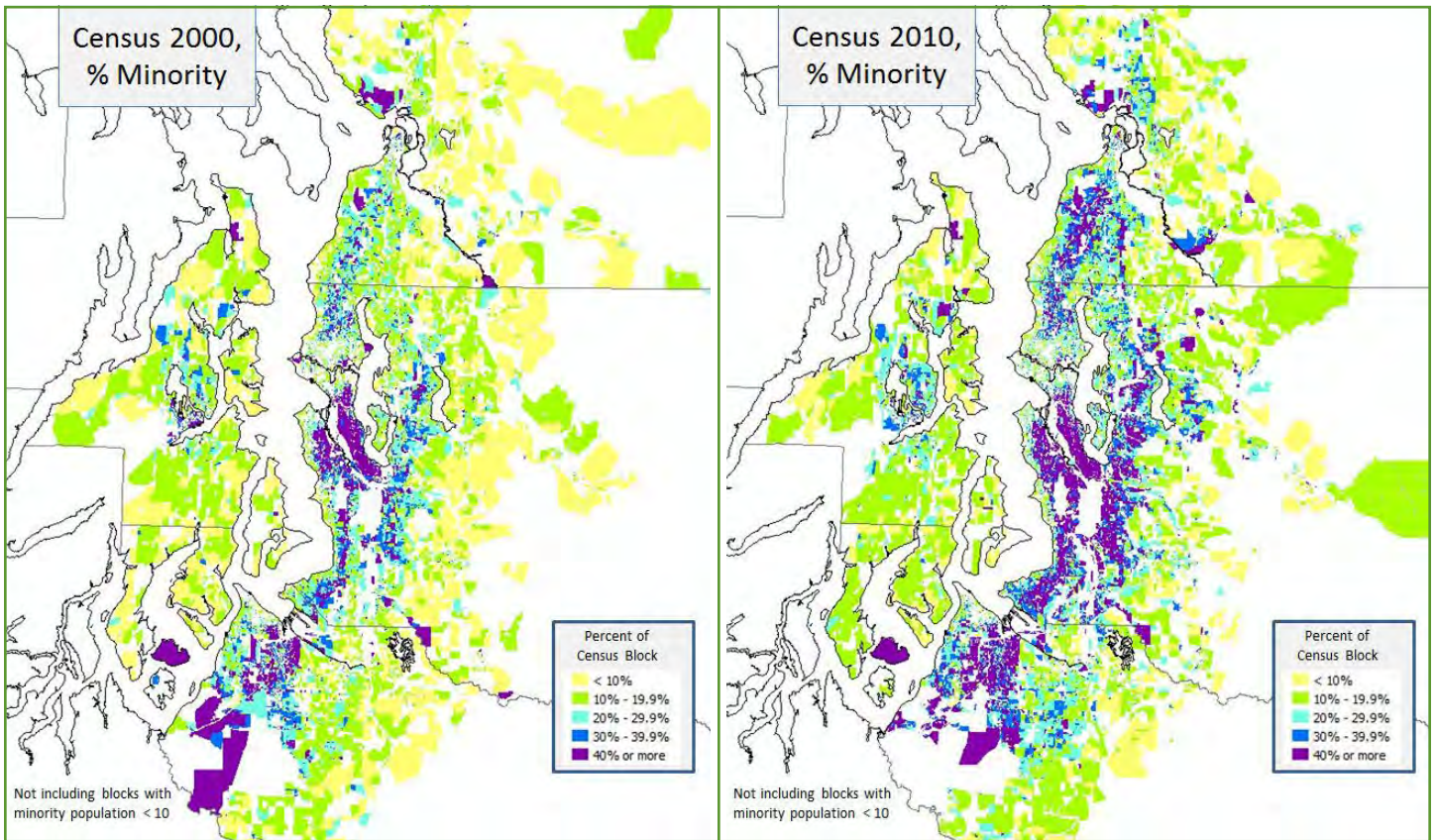
County	Single Race	White	Black or African American	American Indian/ Alaska Native	Asian	Pacific Islander	Some Other Race	Two or More Races	Hispanic or Latino	Total Minority
King	-1.0%	-9.3%	14.8%	-8.8%	35.1%	44.6%	53.9%	23.5%	62.8%	32.4%
Kitsap	-1.2%	-2.0%	-7.6%	-0.8%	12.3%	18.2%	9.4%	23.9%	50.8%	17.4%
Pierce	-1.8%	-5.3%	-2.3%	-3.8%	17.6%	57.6%	59.4%	33.6%	66.2%	23.9%
Snohomish	-1.3%	-8.5%	52.6%	0.8%	53.7%	56.2%	98.1%	36.6%	90.9%	54.6%
<b>REGION</b>	<b>-1.2%</b>	<b>-7.7%</b>	<b>10.6%</b>	<b>-4.3%</b>	<b>34.0%</b>	<b>46.9%</b>	<b>60.1%</b>	<b>28.0%</b>	<b>67.7%</b>	<b>32.5%</b>

Figure 1 shows where the growth in minority population since 2000 has taken place at the census tract level. While the population share for minorities has gone down in parts of Seattle and Tacoma and on the region’s military bases, it has increased in southwest Snohomish County, the eastern and southern parts of King County, and in Pierce County in a broad swath from south of Puyallup up through Orting and Sumner to the Lake Tapps area.

In 2000, concentrations of minority population tended to be in central and south Seattle, extending north and south in a narrow band along the major freeway corridors. These concentrations have now expanded to cover much larger portions of the urbanized area of the region (Tables 2 and 3). The same phenomenon, though to a smaller extent, has occurred for the Hispanic population. Small concentrations have expanded and more of the region now has significant percentages of Hispanics.

The distribution pattern for Asians appears to have developed somewhat differently since 2000. Results from that census show a heavy concentration of the Asian population in south and southwest Seattle, together with large portions of the rest of the region having Asian shares in the 10-20% range. Over the last decade, high concentrations of Asian population have emerged in previously low-concentration areas, particularly in southwest Snohomish County and in a band extending from the Kent-East Hill area north to Bellevue, Redmond, and the Sammamish plateau.

Figure 1. Minority as Percent of Total Population, 2000–2010



Copies of this *Puget Sound Trend* can be obtained from the Information Center at 206-464-7532 or [info@psrc.org](mailto:info@psrc.org), or from the PSRC website, [psrc.org](http://psrc.org). For questions regarding the data presented in this article, contact Neil Kilgren at 206-971-3602, or [nkilgren@psrc.org](mailto:nkilgren@psrc.org).