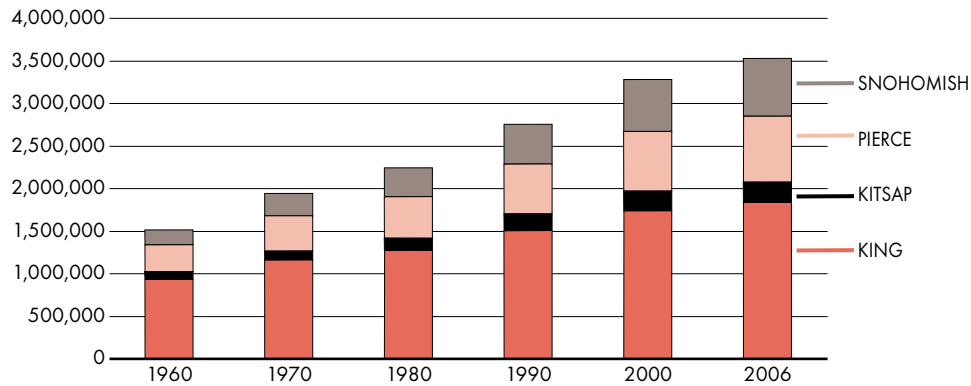


POPULATION CHANGE AND NET MIGRATION

The population of the central Puget Sound was estimated to have reached 3,524,000 in 2006, an increase of 2 million people since 1960. Well over half of this expansion (56 percent) can be attributed to net growth from people moving to the region.

Figure 1. Population of the Central Puget Sound: Decennial 1960–2000 and 2006



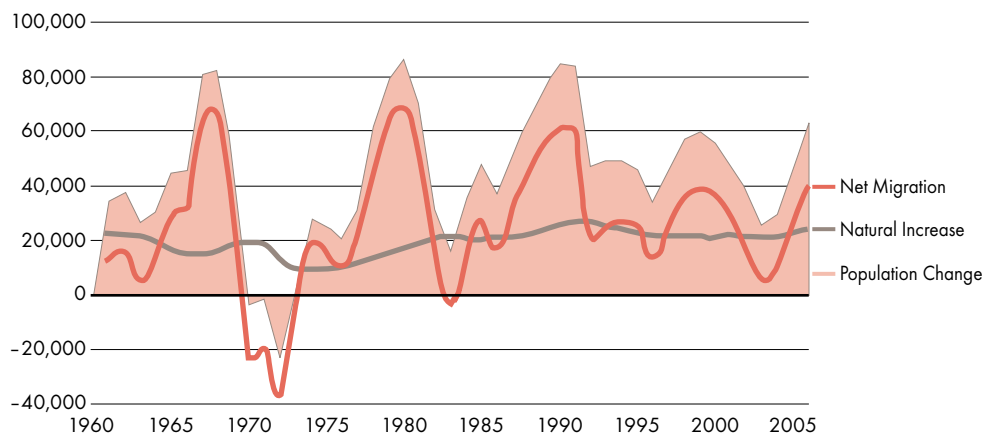
Source: U.S. Census Bureau, OFM

COMPONENTS OF POPULATION CHANGE

Population change is a function of: (a) *natural increase* — births minus deaths, and (b) *net migration* — people moving into an area minus people moving out. Since 1960, net migration has contributed to 56 percent of the region’s growth at an average of 24,700 persons per year. Natural increase accounted for 44 percent of the region’s growth at an average of 19,100 persons per year.

Net migration is the primary driver behind annual population trends in this region. While growth from natural increase remains relatively stable from year to year, net migration is far more volatile, rising and falling in response to the strength of job opportunities and other attractions in the central Puget Sound region compared to areas outside the region.

Figure 2. Annual Population Change by Component, Central Puget Sound: 1960–2006



Source: OFM

Puget Sound Regional Council
 information center
 1011 Western Avenue
 Suite 500
 Seattle, WA 98104
 206-464-7532
 FAX 206-587-4825
 infoctr@psrc.org

Table 1. Components of Population Change by County, Central Puget Sound

	2000-2001	2001-2002	2002-2003	2003-2004	2004-2005	2005-2006	Average 2000-2006	Average 1960-2006
KING								
Net Migration	10,500	5,700	-5,300	-1,900	8,000	14,800	5,300	10,200
Natural Increase	10,800	10,300	10,300	10,900	12,000	12,200	11,100	9,400
Total Population Change	21,300	16,000	5,000	9,000	20,000	27,000	16,400	19,600
KITSAP								
Net Migration	200	200	1,100	1,400	-400	1,700	700	2,200
Natural Increase	1,300	1,100	1,200	1,100	1,300	1,300	1,200	1,300
Total Population Change	1,400	1,300	2,300	2,500	900	3,000	1,900	3,500
PIERCE								
Net Migration	7,600	7,000	4,100	5,600	6,700	12,300	7,200	5,000
Natural Increase	4,900	4,600	4,600	4,700	5,200	5,300	4,900	4,800
Total Population Change	12,600	11,600	8,700	10,300	11,900	17,600	12,100	9,800
SNOHOMISH								
Net Migration	7,800	4,900	5,200	2,800	6,400	11,300	6,400	7,300
Natural Increase	4,800	4,500	4,300	4,500	4,600	4,700	4,600	3,600
Total Population Change	12,600	9,400	9,500	7,300	11,000	16,000	11,000	10,900
REGION								
Net Migration	26,000	17,700	5,100	8,000	20,800	40,200	19,600	24,700
Natural Increase	21,800	20,600	20,400	21,100	23,000	23,400	21,700	19,100
Total Population Change	47,900	38,300	25,500	29,100	43,800	63,600	41,400	43,700

Source: OFM

During the current decade, annual net migration to the region averaged at a noticeably lower level (19,600 per year) than historically (24,700 per year) due to the economic slowdown and recession of the early 2000s. Net migration fell from 26,000 in 2000-2001 to just 5,100 in 2002-2003, and continued to stagnate for another year before recovering to near-average levels in 2004-2005.

In King County — the central Puget Sound county that was hardest hit by the recession — net migration levels were estimated to be in the negative for two years from 2002 to 2004, meaning that more people left, than moved into, the county. The recession also contributed to a considerable decline in net migration to Snohomish County, as well as a moderate decrease in Pierce County. It should be noted, however, that in Pierce County, average net migration levels for this decade (7,200 per year) exceeded its historical average (5,000 per year). Kitsap County, which weathered the economic downturn more successfully than the region's other counties, did not see any significant recession related impacts to net migration.

Since emerging from the recession, the region's economy has firmly reestablished itself and is posting growth rates that are well above the national average. Net migration has also rebounded, with three of the region's four counties showing gains in 2005-2006 that significantly exceed historical averages. Overall, the region gained 40,200 persons during 2005-2006 through net migration, compared to its historical average of 24,700.

For questions about the data presented in this *Trend*, contact Carol Naito at 206-464-7535 or cnaito@psrc.org.