

City of Redmond **Safer Streets Action Plan**

November 7, 2025



Vision Zero Goal

Reduce fatal and severe injury crashes by 50% by 2030 and achieve zero fatal and severe injury crashes by 2035.

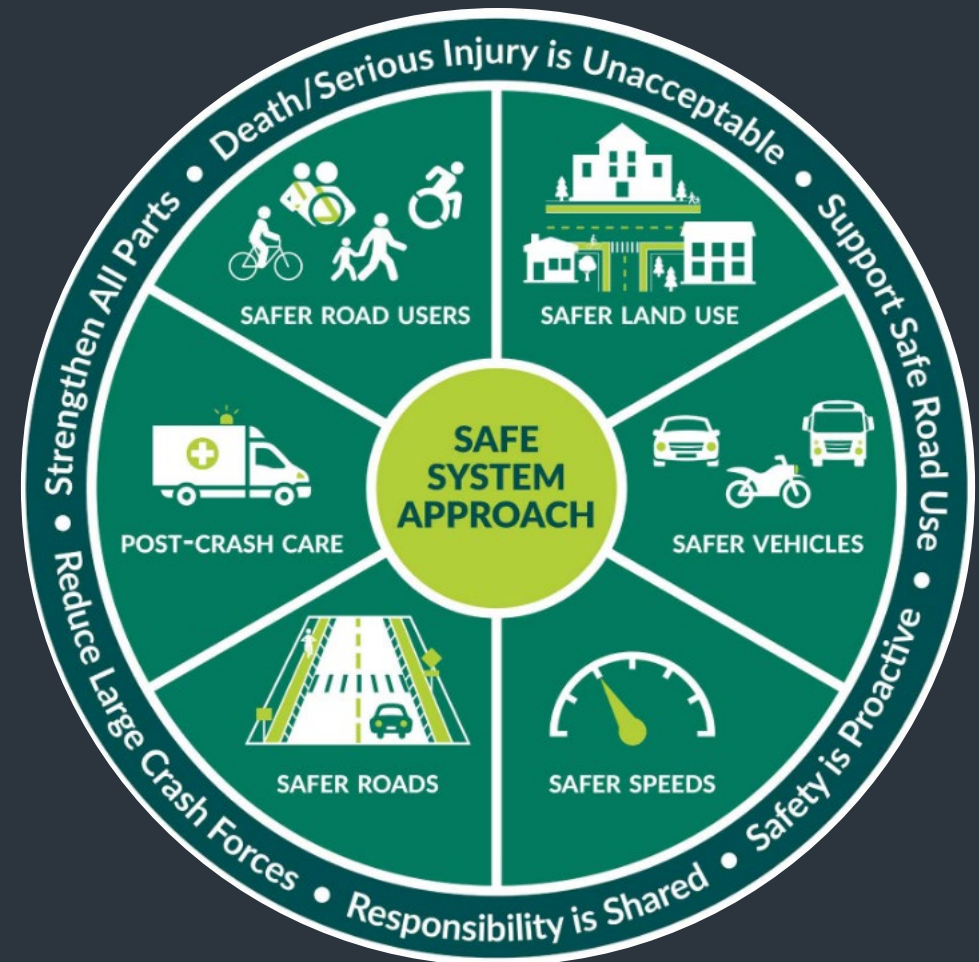


Safe System Approach (SSA)

Why Land Use?

- Putting people closer to their destinations (less exposure)
- Prioritize universal design and accessibility

"A good transportation plan starts with a good land use plan"



Local Road Safety Plan

City of Redmond, WA

Prepared for City of Redmond
Prepared by Transpo Group

January 2024



Safer Streets Action Plan

City of Redmond, WA

Prepared for City of Redmond
Prepared by Transpo Group

March 2025



Implementation

- Policies
- Programs
- Projects

6

Summary of Actions

- ☐ short range project (0-2 yr)
- ☐ medium range project (2-5 yr)
- ☐ long range project (5+ yr)

The previous five chapters of the Safer Streets Action Plan have identified many actions the City should take to proactively address safety risk factors and advanced towards the goal of eliminating all fatal and serious injury crashes by the end of the year 2035. A summary of those next steps is presented below:

Chapter 1

- ☐ Update the City's Complete Streets Policy
- ☐ Develop a Complete Streets checklist for project review

Chapter 2

- ☐ Continue to engage with the Safety Task Force
- ☐ Post-crash response task force
- ☐ Identify opportunities for future Road Safety Audits

Chapter 4

Update the City's code and design manual for traffic signals

- ☐ City code Section 10.24.070
- ☐ Section II(C) Pedestrian Scrambles
- ☐ Section IV(C) Lead Pedestrian Interval
- ☐ Section IV(I)(1) Backplates
- ☐ Section IV(P) Blank-out signs

Update roadway geometry standards

- ☐ Table 2 - Street widths
- ☐ Section A.7.b curb radii
- ☐ Section A.7.d.b.2 lane encroachment
- ☐ Section A.21 safety of vulnerable users

- ☐ Update speed limit policy
- ☐ High visibility enforcement in Pedestrian Zones
- ☐ Signal operational changes and signing modifications in Pedestrian Zones
- ☐ Pedestrian safety educational outreach

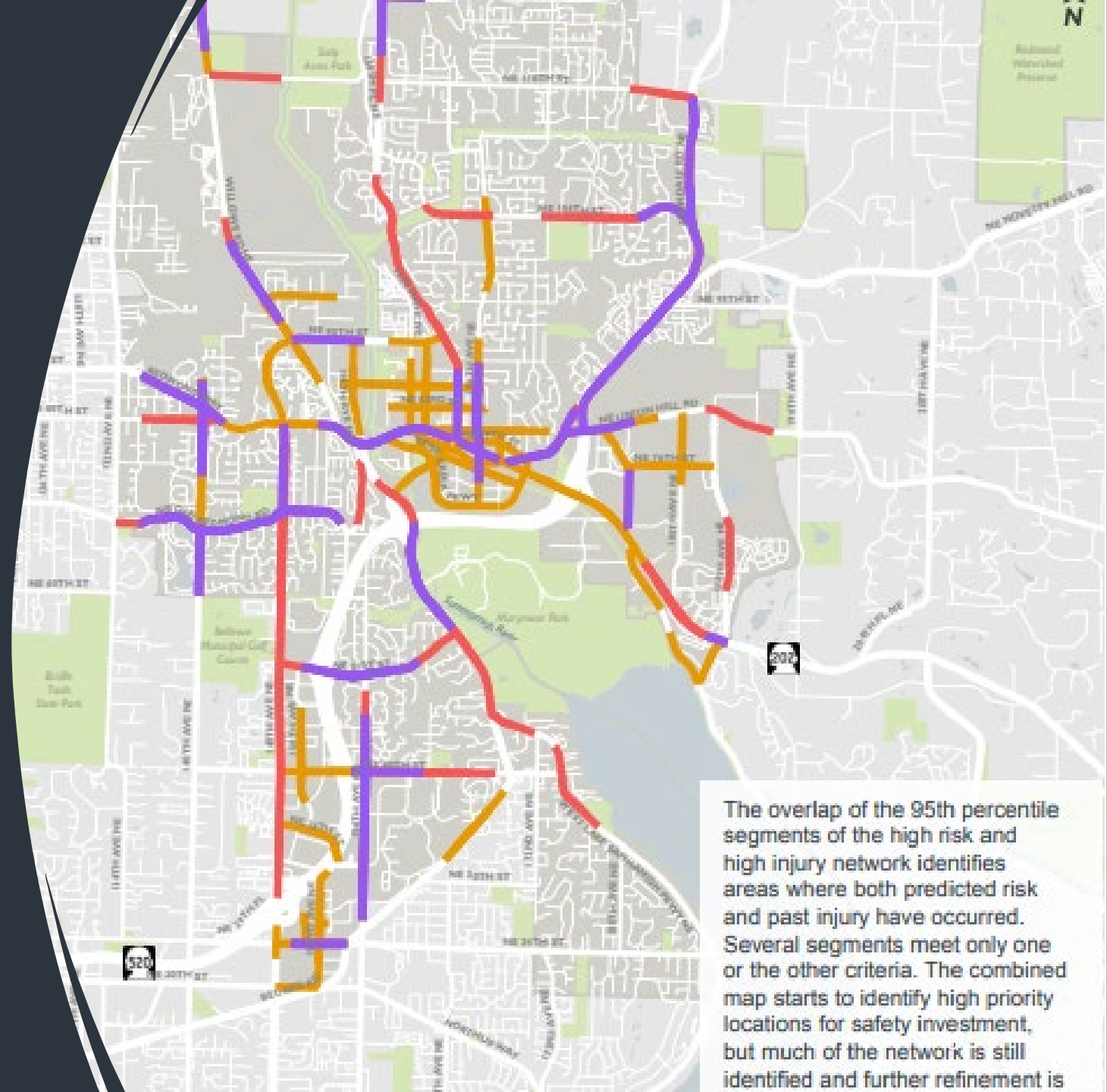
Programmatic safety strategies

- ☐ Automated speed enforcement
- ☐ Safe Routes to School
- ☐ Traffic Gardens
- ☐ Speeding educational and enforcement campaign
- ☐ Urgency reduction outreach campaign
- ☐ Celebrating success
- ☐ Pedestrian and bike user safety campaign

Chapter 5

- ☐ Project 01: Citywide Speed Limit Study
- ☐ Project 02: 148th Avenue NE Safety Corridor Project
- ☐ Project 03: 166th Avenue NE Safety Corridor Project
- ☐ Project 04: Old Redmond Road Safety Project
- ☐ Project 05: NE 85th Street Active Mode Safety Pilot Project
- ☐ Project 06: Avondale Road Bike Improvements Project

High Injury + High Risk



Policy Updates: City traffic signal manual updates

.....

- Update 2002 manual
- Recommendations include:
 - LPI, blank-out signs, ped scrambles, backplates, slower walk speeds in target areas, no right on red

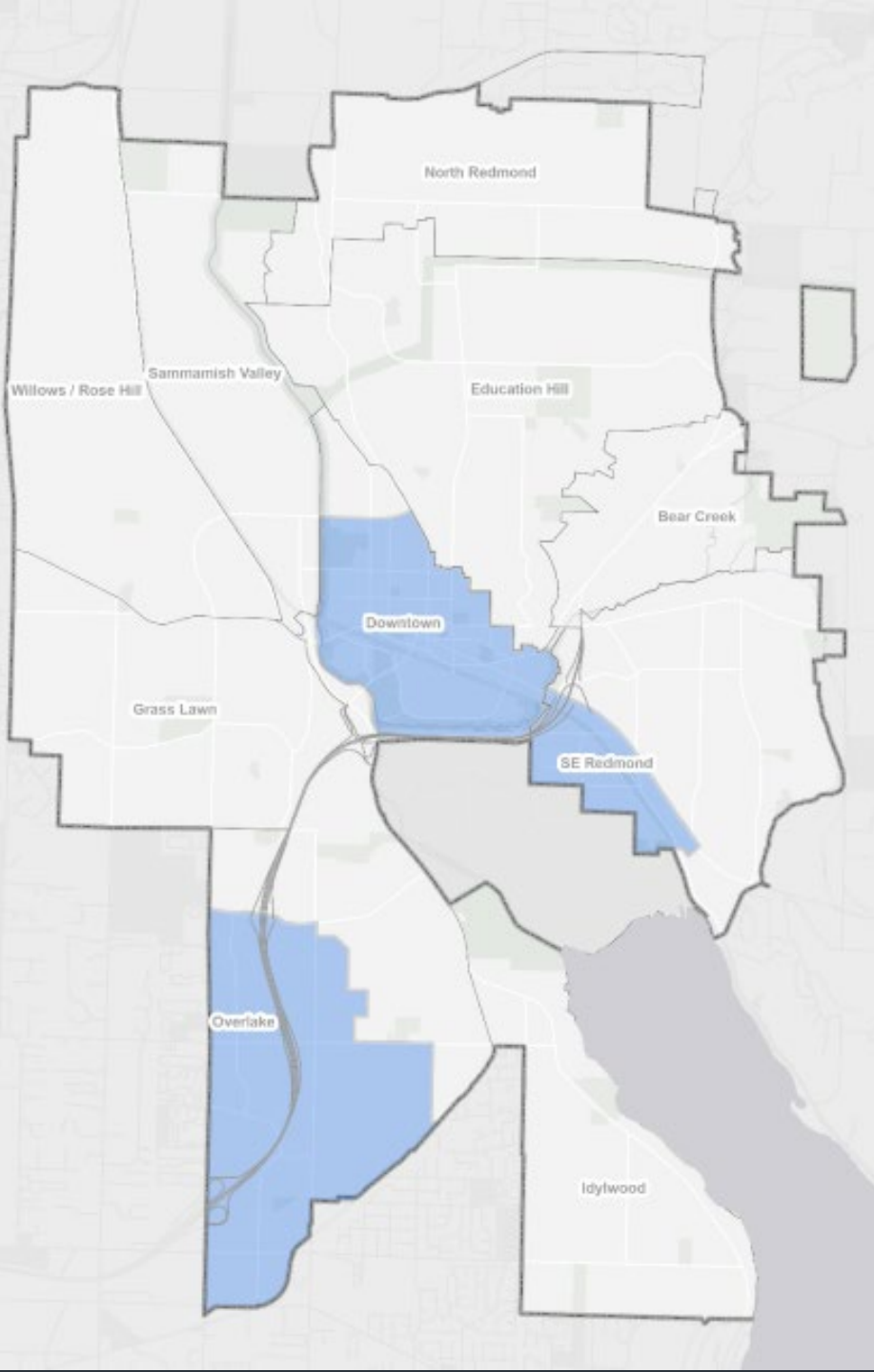




Policy Updates: Speed limit policy update and Speed Safety Cameras

.....

- Re-evaluate speed limits on collectors and arterials
- Develop programmatic approach to lowering posted and design speed
- Speed Safety Cameras are one of several strategies to lower speeds



Policy Updates: Pedestrian priority zone

.....

- Educational messaging on yielding to pedestrians
- Implement signing, and signal treatments
- Implement engineering solutions such as raised crossings/intersections, gateway treatments
- Education/enforcement

WALK & ROLL



School-focused Safety

- Leverage SchoolPool program
- Bring bike and pedestrian safety into elementary and middle school PE curriculum
- Invest in safe/comfortable infrastructure to improve school walk/bike access

Safety Campaign/ Promoting a "Safety Culture"

.....

- Increased community awareness of Vision Zero and Safer Streets Redmond
- "Building A Safer Redmond, Together"
- Encourage safer behaviors through targeted outreach (speeding, distraction/inattention, safe and predictable walking and biking)



Emerging Topics & Technologies

- Upgrading City Fleet vehicles with intelligent safety features
- Smart Signs to reduce driver distraction
- E-motorcycles





Thank you

Any Questions?

Michael Hintze, Transportation Planning Manager

mhintze@redmond.gov

