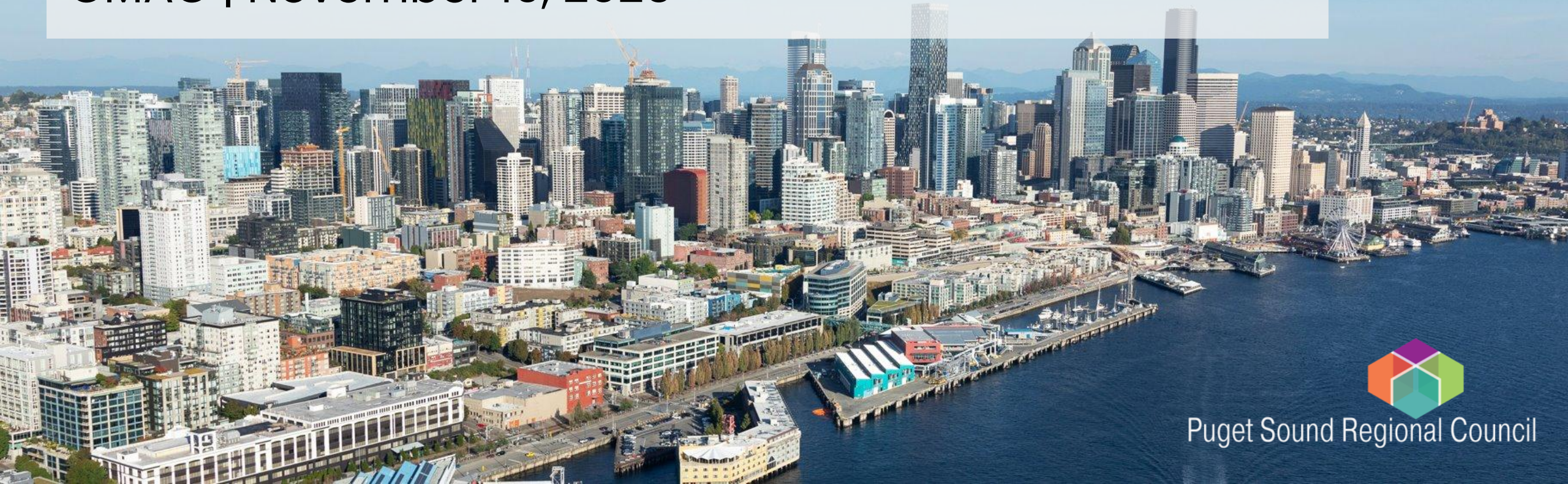


# Coordinated Mobility Plan— Prioritized Strategies

CMAC | November 19, 2025



Puget Sound Regional Council



*We are leaders in the region to realize equity for all. Diversity, racial equity and inclusion are integrated into how we carry out all our work.*

[psrc.org/equity](https://psrc.org/equity)

# Today

**Coordinated Mobility Plan Strategies**

**Review of Changes since October CMAC**

**Review of Strategies, Priorities and Other Elements**

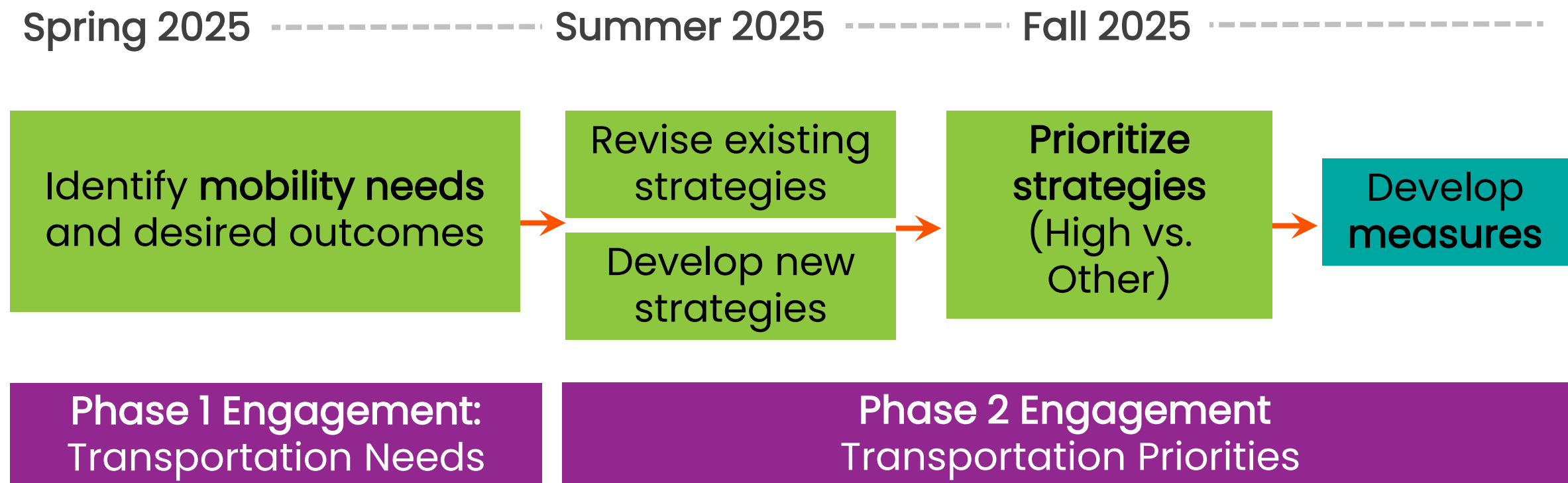
**Discussion**

**Next Steps**

**Goal:** build committee consensus on strategies and other elements before the draft plan released in December.



# Coordinated Mobility Plan Development





# Key Changes

## Strategy 2.1 (High):

Improve the reliability and responsiveness of transit, paratransit, and other specialized transportation by improving dispatch systems, real-time communication, and coordination of return trips.

Refined to specifically address the need for improved reliability and coordination across transportation agencies through better data-sharing, dispatch systems and real-time communication.

# Key Changes

## Strategy 2.2 (Other):

**Assess and replace demand-response vehicle fleets for specialized transportation to deliver on-time service.**

New strategy to emphasize assessing and replacing aging fleets to help ensure on-time performance.

This strategy is rated as “Other” priority, allowing the region to prioritize operational projects over vehicle replacements (capital) in the regional priority ranking process.

# Key Changes

## Strategy 5 (High):

Conduct mobility management programs that help potential riders navigate transportation options and complete their trips, with tailored support to address language and technology barriers.

Combines previous Strategies 5.1 and 5.2.

It broadens the focus of mobility management programs that assist potential riders in navigating transportation options and completing trips.

# Key Changes

Strategy 7.3 (Other): Support the development of land use policies and implementation of transit-oriented development for all ages and abilities.

New strategy to reflect the impact of land use, transit-oriented development framework in particular, on transportation planning.

# High Priorities

**Strategy 1.1:** Strengthen coordination among transit, paratransit, and other specialized transportation providers to ensure a more seamless travel experience for priority populations.

***Refined Strategy 2.1:*** Improve the reliability and responsiveness of transit, paratransit, and other specialized transportation by improving dispatch systems, real-time communication, and coordination of return trips.  
(Community Priority)

**Strategy 4:** Support context-appropriate transportation options, such as deviated-fixed route, demand response, volunteer driver program, or flexible services, for rural and other areas with limited transit, with measures of success tailored to local needs.



# High Priorities

**Combined Strategy 5:** Conduct mobility management programs that help potential riders navigate transportation options and complete their trips, with tailored support to address language and technology barriers.  
(Community Priority)

**Strategy 6:** Expand and optimize transportation services to improve access to healthcare and other essential service locations. (Community Priority)

**Strategy 7.1:** Improve the accessibility and safety of infrastructure, such as sidewalks, curb ramps, and bike lanes, with designs that accommodate all ages and abilities. (Highest Community Priority)

**Strategy 8:** Identify and pursue coordinated, sustainable funding strategies to maintain and expand transit, paratransit, and other specialized transportation serving priority populations.

# Discussion

**Do these revised strategies (included in Attachment A) clearly reflect the committee's priorities and the needs we've heard from priority populations?**

**Do the proposed "High/Other" priority designations make sense?**

# Performance Measures

Performance measures are **indicators used to track progress** towards goals, objectives, and targets.

They show **whether our strategies are working**, highlight where adjustments are needed, and help demonstrate progress over time.

- The Coordinated Mobility Plan includes baseline data in some areas (e.g., service availability and coverage). However, there's a need to improve ongoing data collection, consistency across agencies, and capacity to measure improvements.

# Next Steps

## RTP Engagement:

- Regional meetings – September–November 2025 (virtual meeting on 11/20)
- Focus groups and stakeholder interviews – Late 2025

## Coordinated Mobility Plan Engagement:

- Phase 2 (priorities and strategies) – June–October 2025
- **December 2025:** Draft plan released for public comment







# Thank You!

Jean Kim

Senior Planner

[jkim@psrc.org](mailto:jkim@psrc.org)

Erin Hogan

Associate Planner

[ehogan@psrc.org](mailto:ehogan@psrc.org)



Puget Sound Regional Council