

FRESH FOOD AT A LOCKER
near **YOU!**



GoodRoots
NORTHWEST



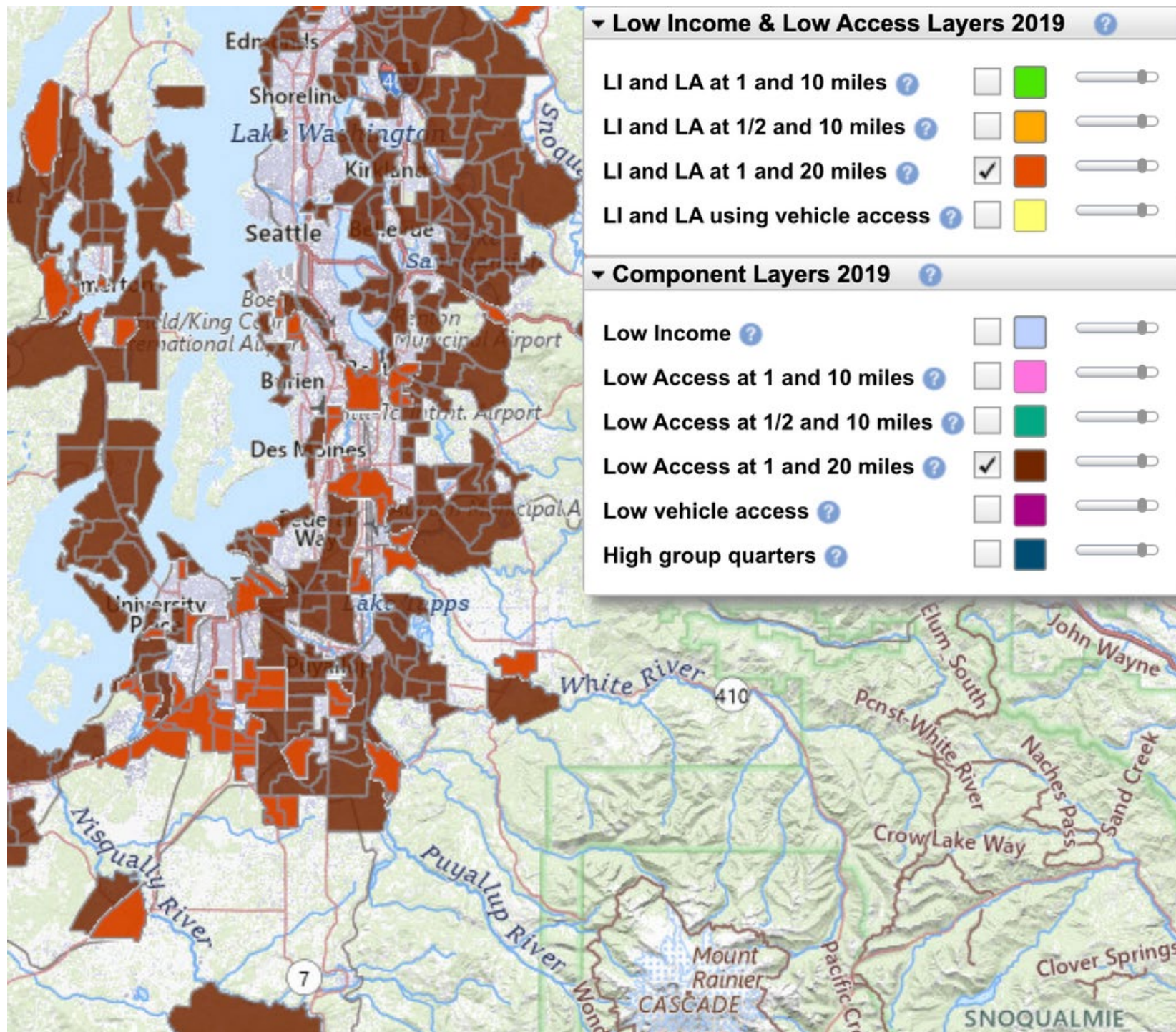
TRADITIONAL FOOD ACCESS MODEL

- Fixed hours - often limited to weekdays
- Requires in-person pickup
- Transportation barriers for many residents
- Long wait times and lines common
- Limited privacy
- Higher staffing needs and volunteer dependence

LOCKER-BASED FOOD ACCESS MODEL

- 24hr online shopping - flexible pick up
- Fully contactless
- Reduces transportation burden
- Placement in strategic census tracts
- No waiting lines or crowding
- Supports individuals with mobility or health barriers
- Low staffing requirements; high operational efficiency
- Smaller physical footprint; lower overhead
- Integrates technology: real time data insights
- Scalable — new sites can be added without building facilities







GoodRoots
NORTHWEST



TACOMA



WSU
PUYALLUP



PUYALLUP



BONNEY LAKE POD



BONNEY LAKE
LIBRARY



BONNEY LAKE
CEDARVIEW



BUCKLEY



ORTING



SOUTH PRAIRIE



WILKESON



BUCKLEY
LIBRARY

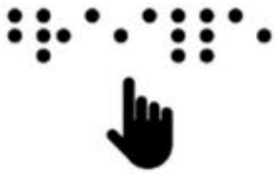


CARBONADO

FIND A LOCKER
near **YOU!**



multi-lingual
app + kiosk



braille
locker labels



kiosk
headphone jack

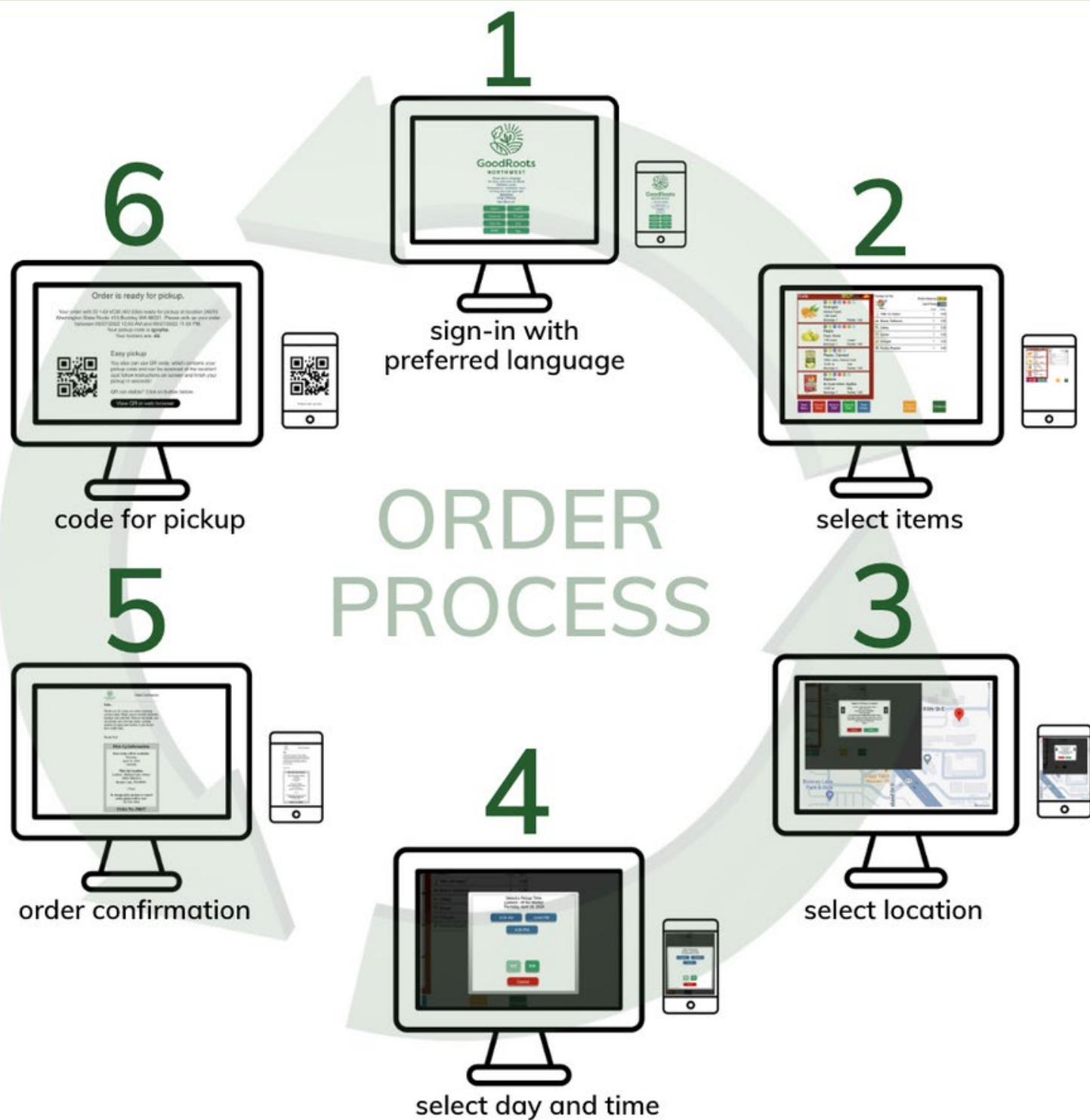


lower locker
assignments



LOCKER FEATURES



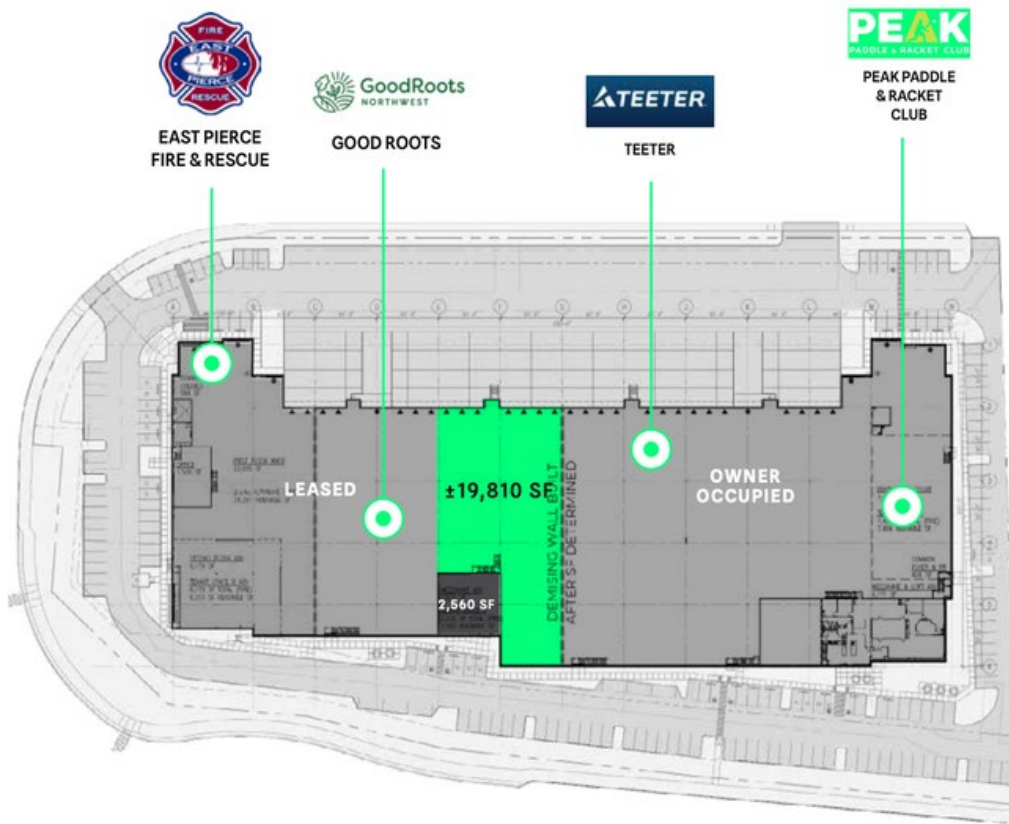


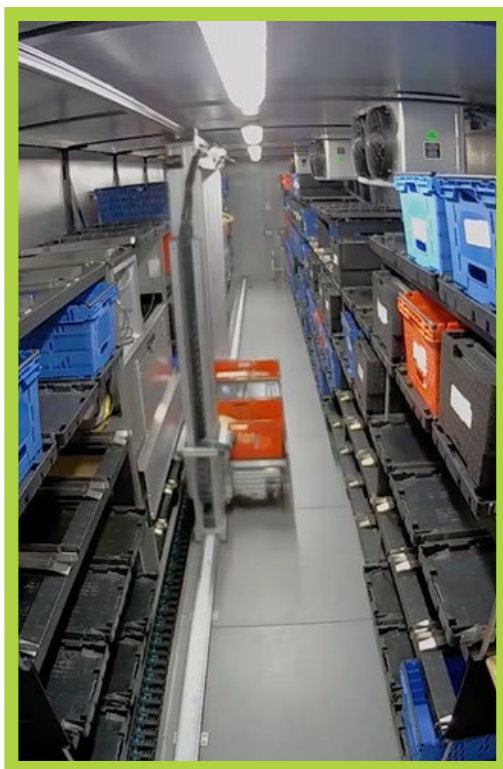
FOOD SECURITY
IS MORE ABOUT
LOGISTICS THAN
IT IS ABOUT
FOOD

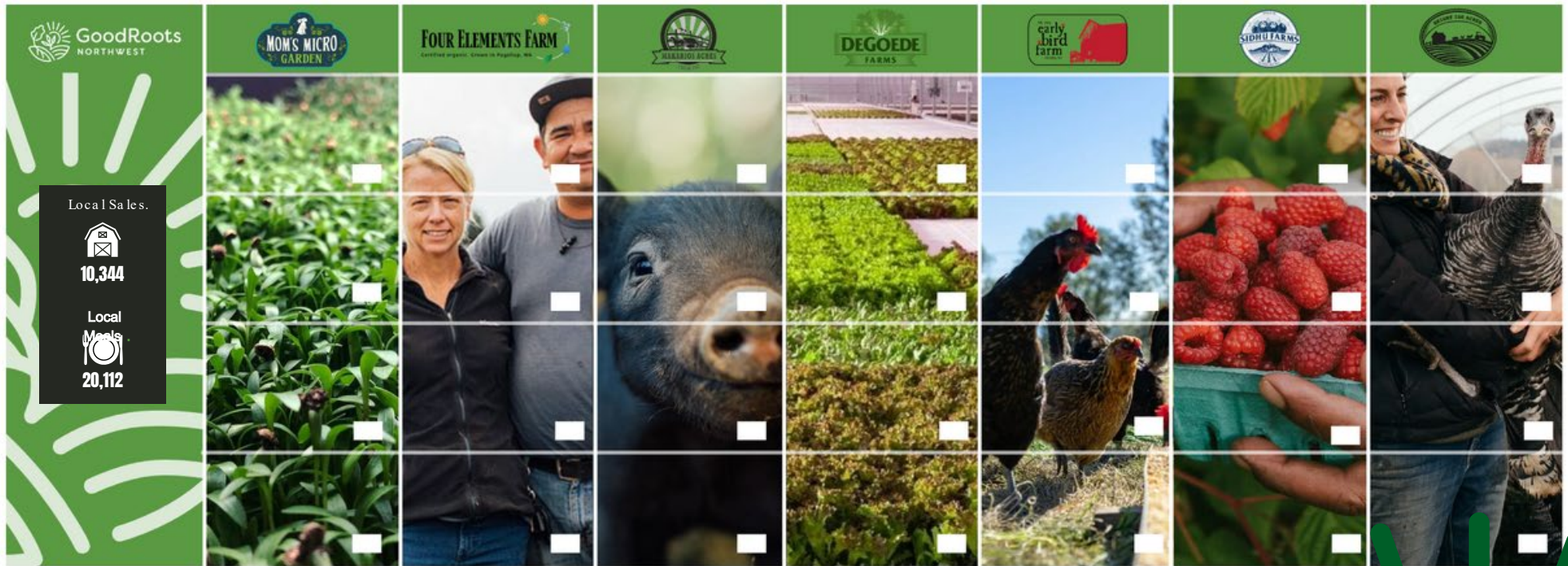










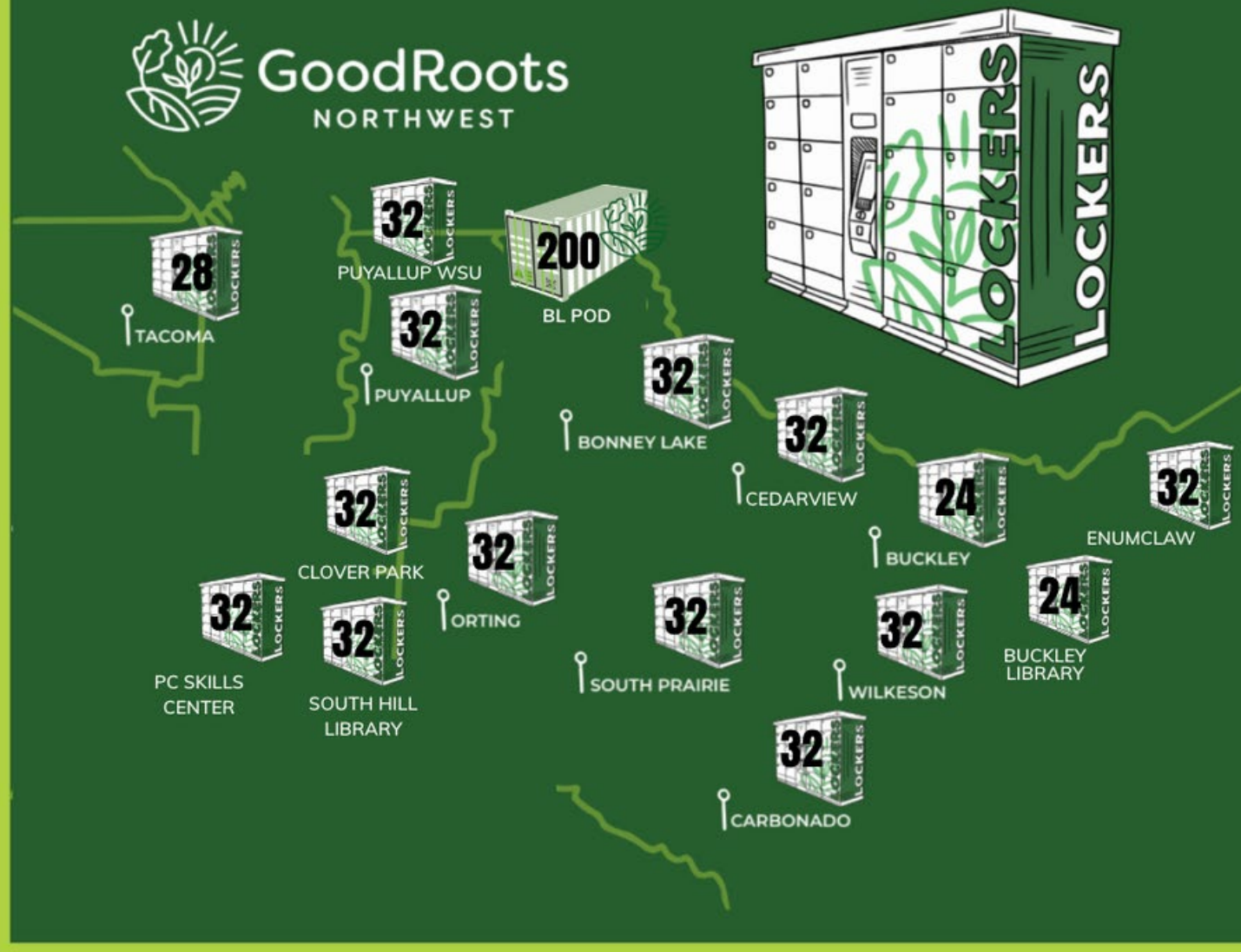


“Save A Farm. Feed A
Neighbor.”





GoodRoots
NORTHWEST



Capacity

Daily = 660 visits

Weekly = 3300 visits

Annually = 171,600 visits



WHY THE CITY OF BONNEY LAKE HAS BEEN A STRONG INNOVATION PARTNER

- Willingness to pilot new ideas
- Collaborative leadership
- Support for technology -enabled access
- Flexible problem -solving mindset
- Recognition of regional responsibility
- Investment in public –nonprofit partnerships
- Strong communication channels
- Focus on community outcome
- Forward -looking mindset