

That's (Almost) A Wrap – 2024 Comprehensive Plan Highlight Reel

Regional Staff Committee | November 20, 2025



We are leaders in the region to realize equity for all. Diversity, racial equity and inclusion are integrated into how we carry out all our work.

psrc.org/equity

Overview



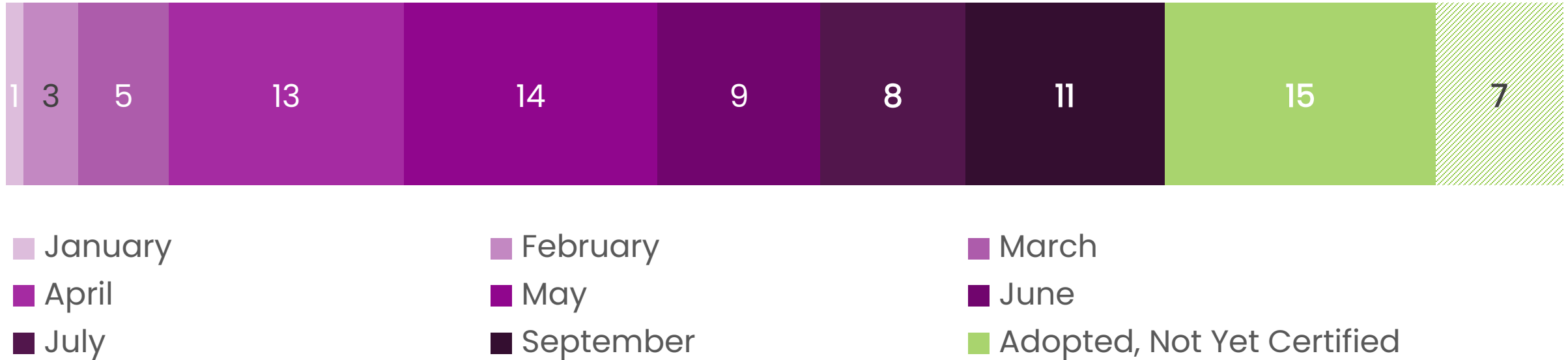
Today:

- Plan review status update
- Comp plan highlights
- Ideas on comp plan survey follow-up



Certification Status Update

2024 Comprehensive Plan Certifications



- Certified 63 comprehensive plans in 2025
- Provided comment letters on 84 plans in 2024/25
- Working with several jurisdictions on housing requirements
- Three active Growth Management Hearings Board cases; one additional decision appealed to Superior Court

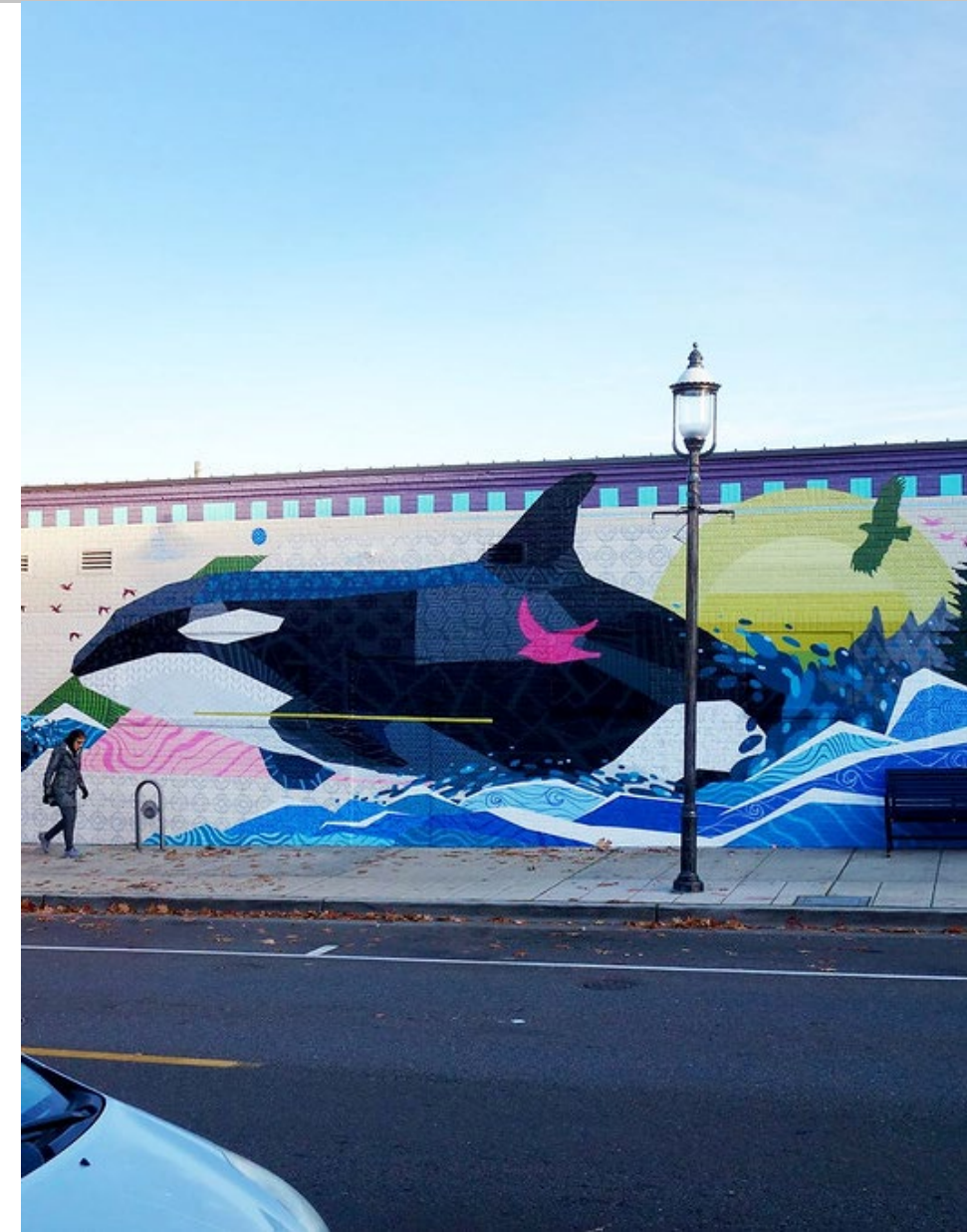


Certification Status Update – Not Yet Certified



Adopted Plans: Not Yet Certified

- Beaux Arts Village
- Black Diamond
- Brier
- Clyde Hill
- Darrington
- Des Moines
- Duvall
- Eatonville
- Gold Bar
- Hunts Point
- Medina
- Mercer Island
- Normandy Park
- Puyallup
- Roy
- Yarrow Point

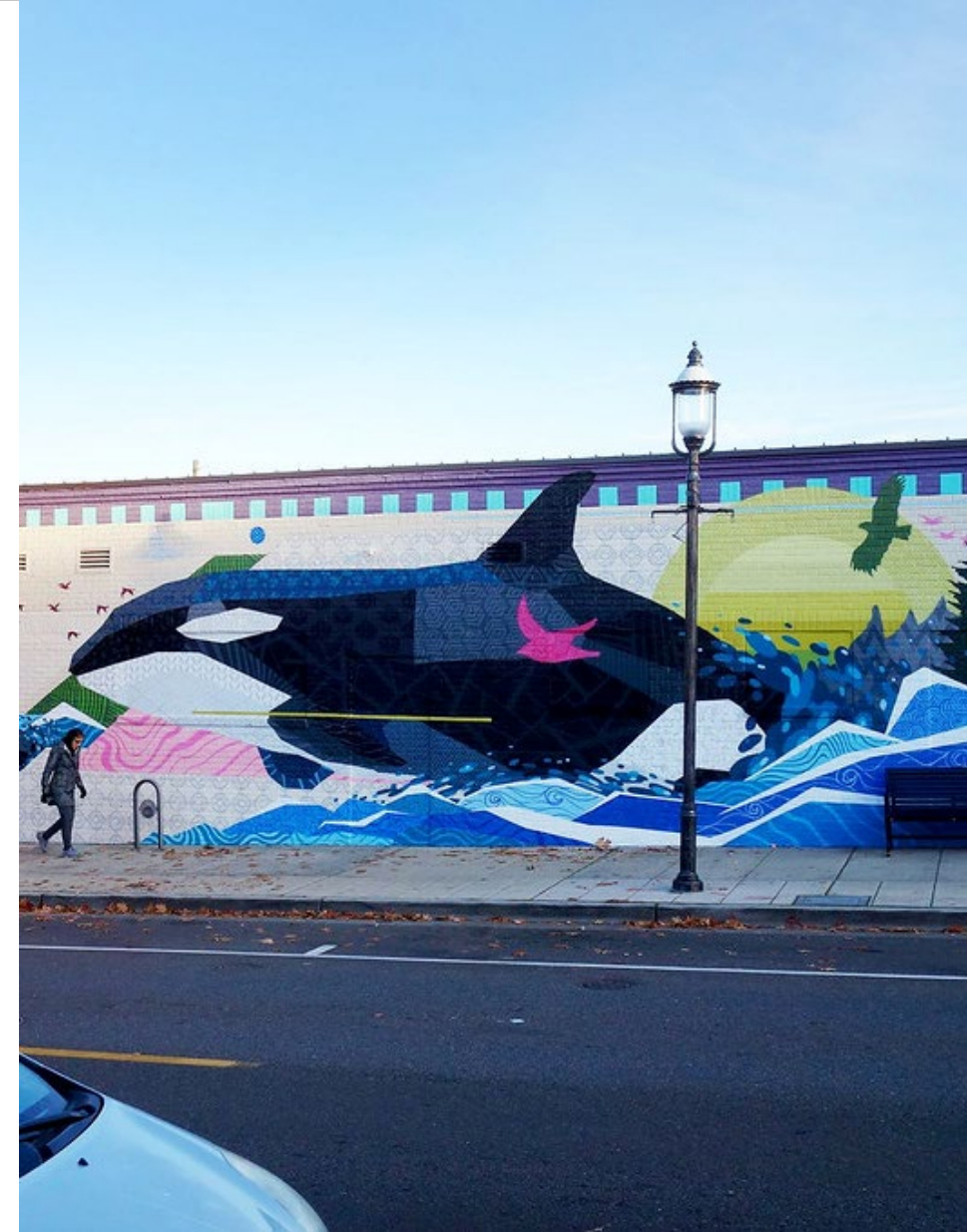


Certification Status Update – Not Yet Adopted



Not Yet Adopted

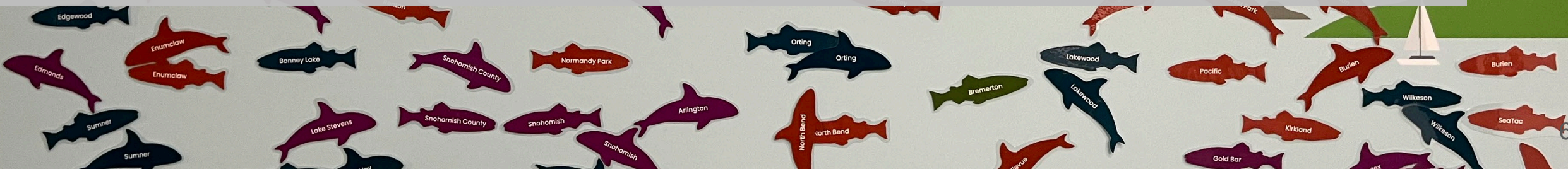
- Bainbridge Island
- Bonney Lake
- Carnation
- DuPont
- Pacific
- Ruston
- Seattle



2024 Local Comprehensive Plan Review



Comprehensive Plan Highlights



Comprehensive Plan Highlights: Engagement

- **Burien:** “Shape Your City” engagement initiative
- **Bonney Lake and Stanwood:** robust public engagement process that included many opportunities to inform plan development
- **Kent:** prioritized diverse representation in engagement processes



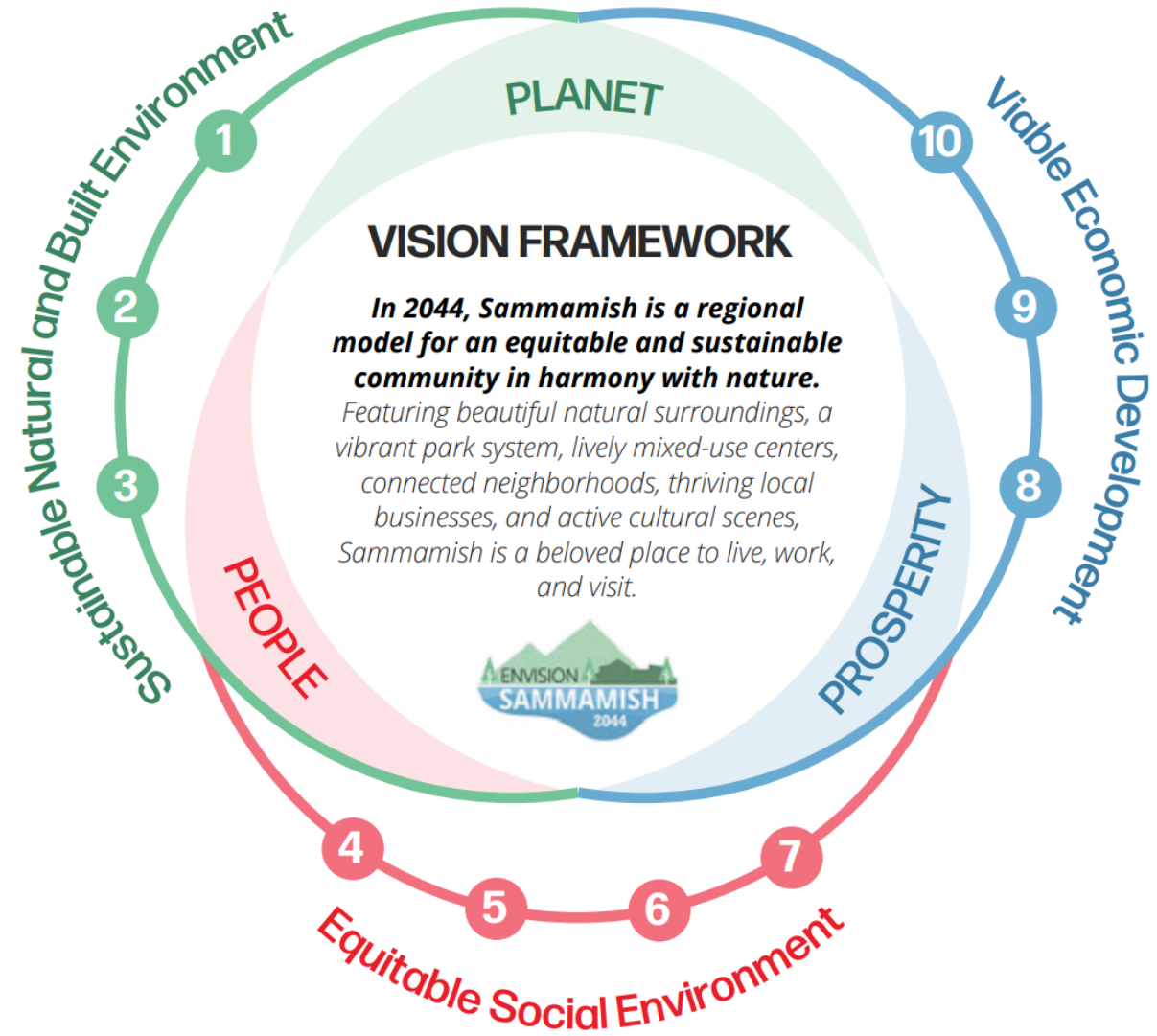
Burien's Shape Your City



Comprehensive Plan Highlights: Reader-Friendly Plans



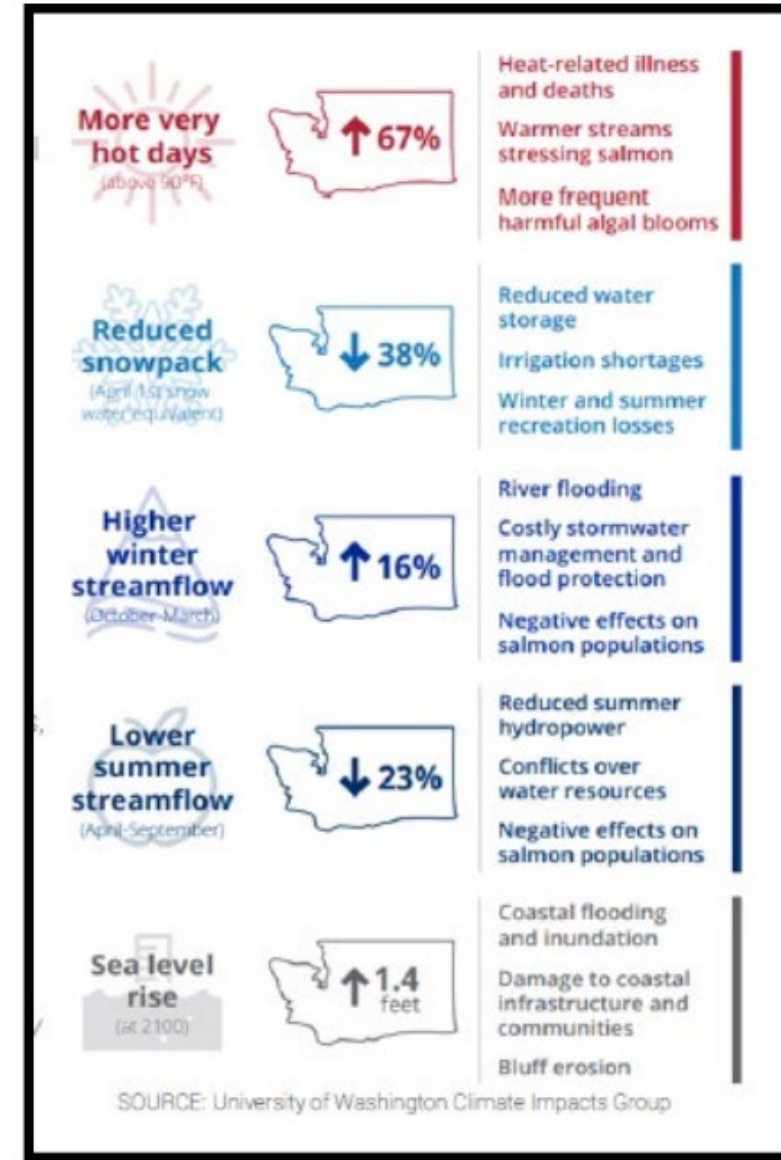
- Sammamish and Lynnwood: engaging graphics, planning concepts explained in plain English
- Marysville, Milton and Kent: compelling graphics, photos and layouts
- Poulsbo: graphically interesting and well-designed plan, done in house



Comprehensive Plan Highlights: Climate Change



- **Kenmore:** integrated Climate Action Plan into a Climate Action element
- **Pierce County, Snohomish County, and Bellevue:** included climate vulnerability assessments
- **Enumclaw:** promotes community-wide climate resilience with a focus on vulnerable community members



Comprehensive Plan Highlights: Rural/UGA



- **Pierce County:** retracted its UGA and conducted a review of rural densities
- **Snohomish County:** included a policy on rural growth triggers to activate strategies, if needed, to limit rural growth



Comprehensive Plan Highlights: Housing



- **Steilacoom:** conducted thorough racially disparate impacts analysis
- **Auburn, Bellevue, and Poulsbo:** provided clear housing capacity analyses
- **Seattle:** conducted review of costs and needed subsidies to inform their adequate provisions work
- **Kirkland:** early adopter of missing middle housing policies



Auburn Housing Element

Comprehensive Plan Highlights: Planning Around High-Capacity Transit



- **Federal Way:** evaluated street networks and bicycle connections for light rail station area
- **Fife:** included city center element that reimagines downtown around light rail station
- **Snohomish County:** included planning for areas surrounding future light rail stations



Sound Transit Star Lake Light Rail Station

Comprehensive Plan Highlights: Small Towns with Big Plans



- **Sultan:** many notable policies to support the transformation of downtown into a high quality, compact center
- **Pacific:** currently no downtown, identified local center for first time

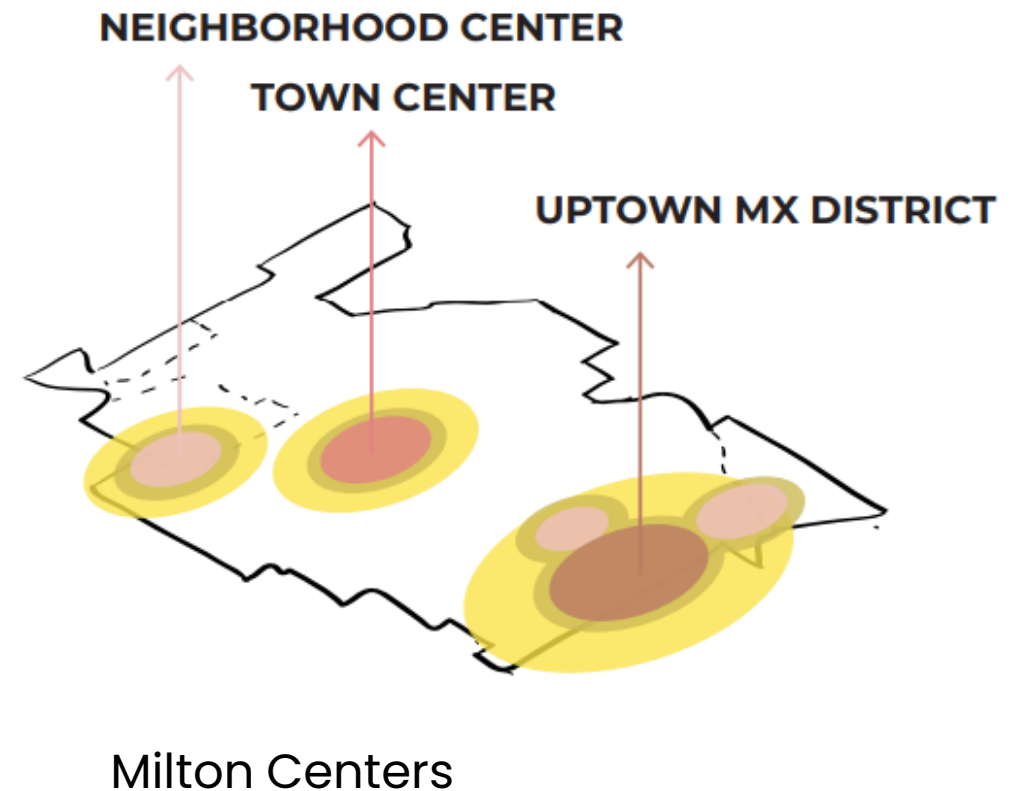


Sultan Comprehensive Plan

Comprehensive Plan Highlights: Coordination



- Skykomish, Index, Granite Falls, Snohomish County, and Pierce County: included Tribal coordination elements and policies
- Milton/Edgewood and Fircrest/Tacoma: coordinated on shared centers
- Bothell and Auburn: provided thorough multicounty planning work, including multiple capacity analyses



Comprehensive Plan Highlights: Transportation



- **Tacoma:** thorough analysis, documented considerations for a variety of users
- **Shoreline:** developed Shared-use Mobility Hub Plan with level of service standards for community amenities
- **Bremerton:** repealed parking minimums
- **Issaquah:** included goal to achieve 50% non-drive-alone mode share by 2030

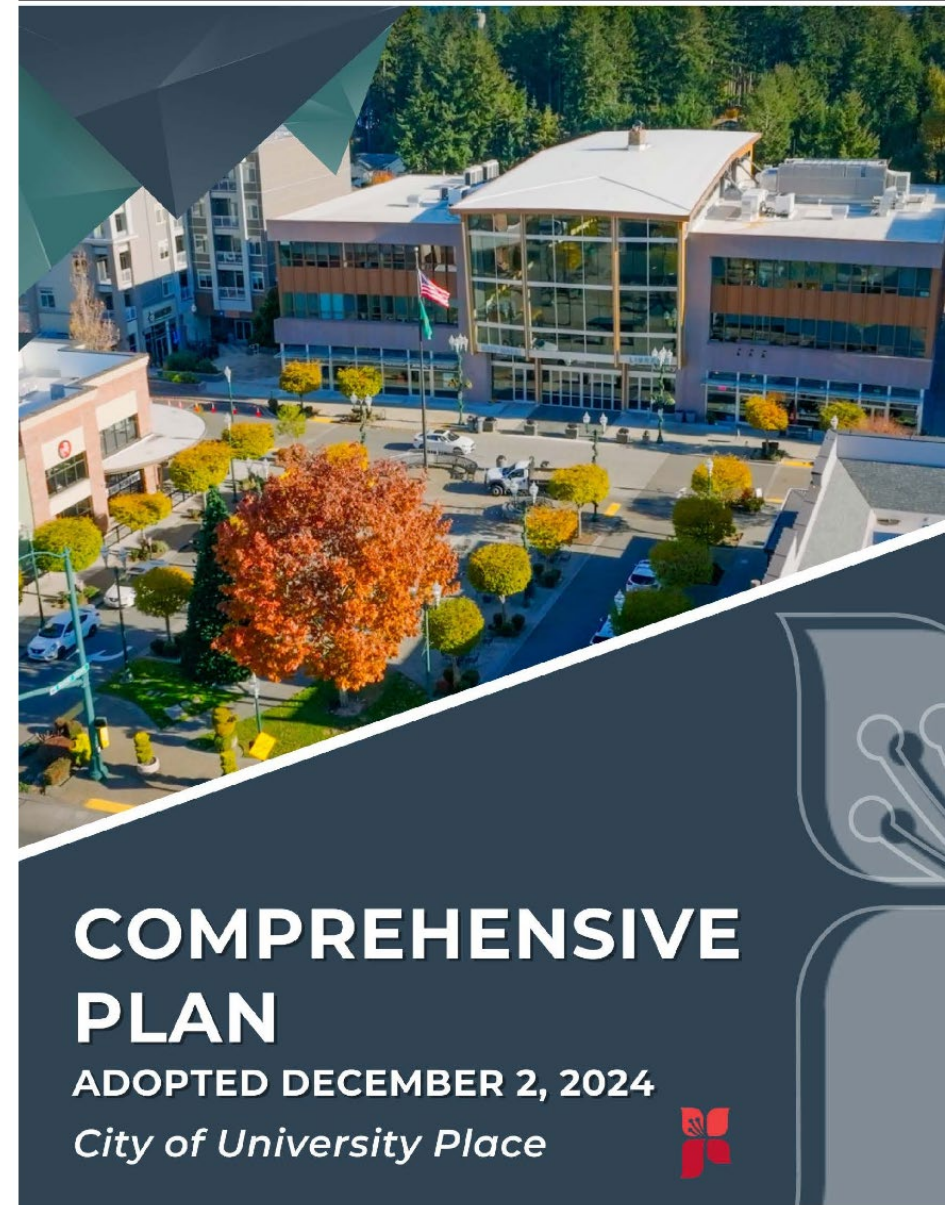


Shoreline shared-use mobility hub

Comprehensive Plan Highlights: Equitable Access to Parks



- **University Place:** emphasizes providing parks within walking distance, particularly those historically marginalized
- **Buckley and Granite Falls:** included policies to provide parks within a 10-minute walk
- **Gig Harbor:** included policy to address park service gaps for historically underserved



Comprehensive Plan Highlights: General



- Jurisdictions completed more environmental impact statements, particularly when upzoning proposed
- More plans submitted on time. Commerce grants helped
- More parties involved in comp plan development process due to robust engagement processes

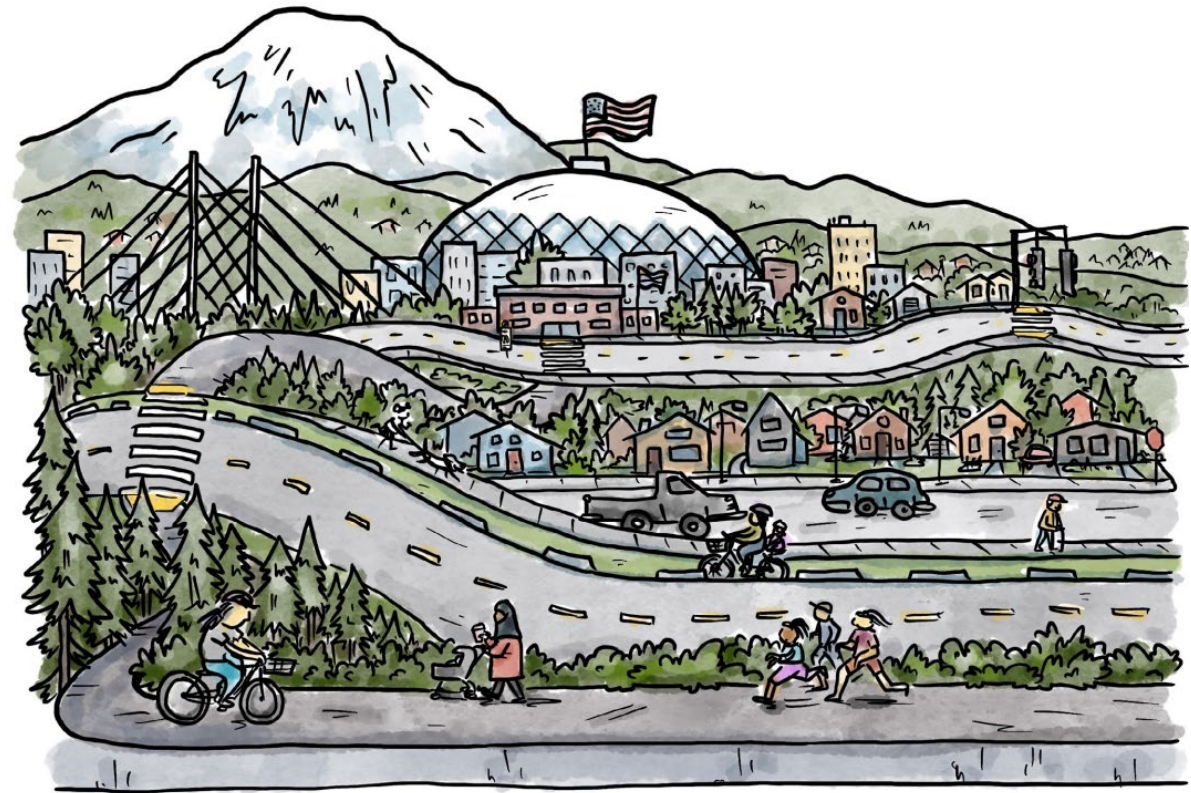


Sultan Planning Summit

Comprehensive Plan Future Work Comments



- Standard comments on climate change, housing implementation, and multimodal level of service standards
- Other more frequently cited comments
 - Transportation finance
 - Emergency housing
 - Lack of sewer systems



Tacoma Transportation and Mobility Plan

Jurisdiction Survey / Taking Stock 2025



PSRC will survey jurisdictions to reflect on:

- Local plan update priorities
- PSRC plan review process
- Resources to support the plan update process
- Areas for future work



Port Orchard Comprehensive Plan—local center



Thank You!

Paul Inghram, FAICP

Director of Growth Management
PInghram@psrc.org

David Dixon

Associate Planner
DDixon@psrc.org

Katie Enders, AICP

Associate Planner
KEnders@psrc.org

Nancy Ferber, AICP

Senior Planner
NFerber@psrc.org

Erika Harris, AICP

Senior Planner
EHarris@psrc.org

Shaun Kuo

Associate Planner
SKuo@psrc.org

Liz Underwood-Bultmann, AICP

Principal Planner
LUnderwood-Bultmann@psrc.org



Puget Sound Regional Council