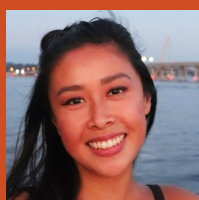


2026 Equity Advisory Committee



Puget Sound Regional Council

KING COUNTY



Annie Tran

Pronouns: she/they | Race/Ethnicity: Chinese and Vietnamese

Annie grew up in the Seattle-area and currently lives in Shoreline. Her experience in local government and non-profits are centered around civic engagement processes relating to local economic development, advancing democracy, and protecting the environment. She is passionate about removing barriers to participation and community building.



Debbie Lacy

Pronouns: she/her | Race/Ethnicity: Mexican and White

Debbie currently lives in Kirkland and is the founder of Eastside For All, which convenes partners to transform policies, practices, investments, and relationships so that the needs and solutions of communities of color are centered. She works with community and government agencies to address gaps in access to opportunities, resources, and representation.



Erin Bryant-Thomas

Pronouns: she/her | Race/Ethnicity: Black/African American

Erin currently lives in Auburn. She is a Human Services Manager for the City of SeaTac and a student at Evergreen State College. As a Human Services Manager, she focuses on root causes, and advocates for solutions that are community-informed, equity-centered, and coordinated across sectors. She also has deep roots in community organizing where she's focused on housing stability, equitable education, employment access, and culturally responsive care.



Julia Jannon-Shields

Pronouns: she/her | Race/Ethnicity: African American and French (Afro-French)

Julia is a culturally-informed community planner based on the lands of the Duwamish people in Seattle. Julia works towards an equitable, sustainable future by centering minoritized experiences in governance, planning, and development processes to rebuild from generations of mistrust and harm. She amplifies this perspective in her roles at the King County Executive Department's Regional Planning Team; BlackSpace Urbanist Collective; Homestead Community Land Trust; and the Puget Sound Regional Council.



Lisa Espinosa

Pronouns: she/her | Race/Ethnicity: Latina and Native American

Lisa currently lives in West Seattle and serves as an Energy Management Analyst for Seattle City Light. Lisa has an extensive background in providing energy efficient programs to communities. She is passionate about developing equitable benchmarks and brings tools and a strong connection with communities to support these efforts.



Megan Espinoza

Pronouns: she/her | Race/Ethnicity: Latina and white

Megan currently lives in unincorporated Skyway and is an architect at a firm specializing in affordable housing. Through her years working on projects throughout the Puget Sound, she has seen firsthand the impact that planning and zoning have on the long term outcomes of diverse communities and wants to work to see more equitable and just practices used as the region continues to develop.



Rhea Biswas

Pronouns: she/her | Race/Ethnicity: Asian

Rhea is a senior at Eastlake High School in Sammamish. She also serves as a Health and Safety consultant where she leads workshops on water and hygiene safety for Nigerian leaders. Additionally, she was a member of PSRC's Summer Planning Academy (SPA). She is passionate about community engagement with underrepresented groups and reducing racial disparities in access to transportation and housing.

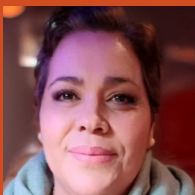


Thanh Nguyen

Pronouns: she/they | Race/Ethnicity: Vietnamese and Chinese

Thanh is a Vietnamese-Chinese American, raised by a single immigrant mother. Thanh has helped reduce racial inequities by advocating for community centric funding, resources for the unhoused community, stronger tenant right protections, and community outreach that is culturally tailored and language accessible. Thanh has been a part of the Washington Low Income Housing Alliance's Resident Action Project, Housing Justice Project, Puget Sound Sage's Community Leadership Institute Fellowship, and now serves on the board of the Asian Pacific Islander Community Leadership Foundation.

KITSAP COUNTY



Gabriela A. Ituarte

Pronouns: she/her | Race/Ethnicity: Hispanic/Latina

Gabriela lives in Bremerton. She has 30+ years of experience working with the Latino community and 7 years of experience advocating in Kitsap County for marginalized groups. She currently serves as the Executive Director of the We Are Better Together Foundation, where she elevates underrepresented voices and promotes accessible messaging that resonates across communities, primarily focusing on language access.



Jewel Shepherd-Sampson

Pronouns: she/her | Race/Ethnicity: African American

Jewel currently lives in Port Orchard. She is a small business owner who has served on community advisory panels effectively connecting community to government agencies. She has a passion for working with youth and encouraging them to use their voices to impact change.



Maria Fergus

Pronouns: her/hers | Race/Ethnicity: Hispanic/Latine

Maria is a community volunteer and social justice advocate in Kitsap County. She has three adult children who have been her greatest teachers. They fuel her passion to help create a more just, equitable and sustainable future for ALL.



Shannon Turner

Pronouns: he/him | Race/Ethnicity: Black/African American

Shannon currently lives in Poulsbo. He serves as the 2nd vice president of the NAACP in Bremerton, WA (Branch 1134) and is the chair of the DEI (Diversity, Equity, and Inclusion) Committee for the 23rd LD Democratic Party. In these roles he leads conversations, trainings, forums, etc. on racial inequities and how to combat them.

PIERCE COUNTY



Corey Orvold

Pronouns: she/her | Race/Ethnicity: African American

Corey is a realtor from Puyallup who is passionate about promoting housing equity in our region. Corey serves on several committees including local and state housing DEI committees, Rebuilding Together Board, the Continuum of Care Regional Equity Committee, and sitting on the South Sound Affordable Housing Advisory Board.



Julius Moss

Pronouns: he/him | Race/Ethnicity: Black/African American

Julius currently lives in Southeast Tacoma, and his research focuses on identifying and dismantling systemic socioeconomic mobility barriers through higher education access. Recently, he defended his dissertation which described how organizational change impacted academic success rates of Black men enrolled at a local Pierce County community college district.



Keshreeyaji R. Oswal

Pronouns: he/him

Keshreeyaji is the Founder of Glocal Solutions, a social enterprise and local startup dedicated to providing organizations with the essential data and local expertise necessary for growth and transformation. Keshreeyaji is also an active volunteer and serves on the Board of Directors for the Center for Independence Washington.



Laurenne Sayles

Pronouns: she/her | Race/Ethnicity: Black

Laurenne currently lives in Central Tacoma. She serves as a grant writer for the Urban League where she delivers human interest storytelling in the fields of education, youth, diversity/inclusion, workforce development, and social justice.



Sophia Lana Castro

Pronouns: she/her | Race/Ethnicity: Asian

Sophia is a freshman at Pacific Lutheran University. Prior to attending college, Sophia was involved in the Lakewood Youth Council. She also served as a Student Ambassador for Student Achievement Support Services helping marginalized students with their post-secondary education journeys. And as an intern for TurnUp she encouraged youth to be more civically engaged.

SNOHOMISH COUNTY



Autrina Martindale

Pronouns: she/her | Race/Ethnicity: Black

Autrina currently lives in Marysville and has built a lengthy career in financial planning and literacy with a focus on moving people of color toward greater equity. Her current work focuses on researching and developing innovative ways to impact institutional leadership and create solutions for long-term sustainable equity and advocacy for all people.



Vivian Obah

Pronouns: she/her | Race/Ethnicity: Black/African American

Vivian currently lives in Mill Creek and serves as the Executive Director of the Helping Hands Project Organization. Here she expands access to affordable housing and works with small immigrant and minority-owned businesses. She also currently sits on the State Advisory Council on Homelessness.