

# Regional Transportation Plan 2026–2050

Bicycle and Pedestrian Advisory Committee  
January 13, 2026



Puget Sound Regional Council



*We are leaders in the region to realize equity for all. Diversity, racial equity and inclusion are integrated into how we carry out all our work.*

[psrc.org/equity](https://psrc.org/equity)



# Regional Transportation Plan

*RELEASED FOR PUBLIC COMMENT THROUGH FEBRUARY 2*

*Materials on the [RTP Engagement Hub](#)*

## Today's Presentation:

- Background on development process
- Summary of public outreach to date
- Highlights of Draft Regional Transportation Plan
  - Highlights relevant to active transportation
- 2 • Schedule and Next Steps



# 2026–2050 Plan Development / What's New

- Scope of work reflecting current policy priorities
- Investments based on new comprehensive plans, current transit plans, new State Highway System Plan
- Updated plan consistency framework applied to all regional capacity projects
- Reassessment of financial strategy
- Evaluation of four plan scenarios
- Regional Safety Action Plan
- Regional Comprehensive Climate Action Plan



# Plan Priorities

Working with PSRC's member agencies and the public, key priorities identified for the next plan include:

- Safety
- Climate
- Equity
- Transit & Accessibility
- Recognize Diverse Needs and Community Context
- Maintenance & Preservation
- Decarbonize the System
- Financial Strategy
- Ferry System Service & Reliability



# Public Outreach

- ✓ Spring-Summer Community Tabling Events
- ✓ September-November Seven Regional Public Meetings
- ✓ Online Survey Open May – October
- ✓ >600 total participants



# Public Feedback to Date – Regional Public Meetings

Summary themes from attendees:

- Different needs around the region – some communities more reliant on cars, fewer transit and walk/bike options
- Less interest in more roads, but more interest in *better* roads
  - maintenance is critical, functioning roads are the underpinning of all other modes



# Public Feedback to Date – Regional Public Meetings

Summary themes from attendees:

- Transit investment ranked highly for majority of attendees – need more of it, more frequent and seamless connections
- Also calls for better connected and safer sidewalks and bicycle networks
- Accountability for investment – let's see results



# Draft Plan – Elements and Approach



- Streamlined plan document
  - Summary of plan results and key findings
  - Actions and future work
- Links and standalone documents for key plan elements





# Draft Plan – Available Documents

On the [RTP Engagement Hub](#):



Draft Plan document  
and supporting  
materials / key plan  
components

[View the Draft Regional Transportation Plan \[PDF/2.5MB\]](#)

Dive into the key components of the plan



[System & Performance](#)



[Multimodal Mobility](#)



[Climate & Environment](#)



[Health & Safety](#)



[Finance](#)



[Maintenance & Preservation](#)



[Outreach & Engagement](#)



[Administration](#)

# Draft Plan – Available Documents

## Examples of available documents and topics:

- ✓ System Performance Report
  - ✓ Transportation System Visualization Tool
  - ✓ Freight Story Map
  - ✓ Active Transportation Plan
  - ✓ Climate & Resilience
  - ✓ Water Quality
  - ✓ Health
  - ✓ Safety
  - ✓ Financial Strategy
  - ✓ Maintenance & Preservation



# Draft Plan Highlights

- \$335 billion total cost – includes a wide mix of needed investments with a focus on maintenance and transit
  - Fully funding backlog, maintaining state of good repair into the future
    - *60% of plan costs*
  - Significant expansion of regional and local transit networks and service
    - *116 miles of light rail, doubling of bus rapid transit routes, 90% increase in transit service hours*





# Draft Plan Highlights

- Significant progress on regional priorities
  - *33% growth in people and jobs by 2050*
  - *20% growth in total VMT, 12% reduction in VMT per capita*
  - *An almost tripling of transit trips by 2050*
  - *Walking and biking trips grow 83% and 58%, respectively*
  - *83% reduction in greenhouse gas emissions*



# Draft Plan Highlights

- 83% of plan costs can be funded with current law revenues
- Proposes a flexible, practical approach for future new revenue sources
  - *Regional focus on road usage charge, transit sales tax, vehicle/license fees, county road levy*
- Recognizes unique local conditions and needs
- Acknowledges policy and implementation issues
- Calls for future work and collaboration



# 2026 Draft Active Transportation Plan



## Draft ATP Content:

1. Introduction and Scope of ATP
2. Expanded info from the RTP *Current* Transportation System Report
3. Expanded info from the RTP *Future* Transportation System Report
4. Next Steps / What's Ahead?
  - Overview of related work
  - Plan implementation items/actions





# Draft ATP – Current System Content

- High-level outputs on travel behavior for walking, biking, and rolling in the region from the Household Travel Survey.
- Overview and analysis of the *Pedestrian and Bicycle Facility Inventory*
  - Mileage and coverage in different geographies
  - Overview of the Pedestrian and Bicycle High-Injury Network (HIN)
  - Level of Traffic Stress (LTS) and Gap Analyses
- ADA Transition Plan Inventory



# Draft ATP – Future System Content

- Explanation of the RTP Regional Capacity Project (RCP) List and programmatic active transportation investments
- Overview of the pedestrian and bicycle elements of the Regional Capacity Projects.
- Some information on how these projects address the identified gaps and the Pedestrian and Bicycle HIN.
- Model outputs on mode share, trip purposes, and median time/distance spent walking and biking in 2050.



# Draft ATP – Next Steps and What's Ahead

The ATP lists these implementation actions to help guide our pedestrian and bicycle work program.

- Continue to maintain and improve regional pedestrian and bicycle data collection and reporting
- Work with external partners to monitor progress on work relevant to active transportation
- Continue to provide guidance and support for local jurisdictions in the form of data, tools and relevant plans
- Explore ways to further integrate the plan into PSRC's project selection process

See the full list on Page 26 of the Draft ATP





# Other relevant work from the Draft RTP



## **Coordinated Mobility Plan**

Describes how transit agencies, human service agencies, school districts, and other transportation providers can work together to improve mobility for people with mobility and accessibility needs

## **Regional Transit Access Assessment**

Identifies where work is taking place to develop tools and resources for current and future transit access planning efforts. (Work Ongoing)

## **Health and Safety Reports**

These reports describe how the draft RTP addresses safety and public health.



# Schedule to Plan Adoption

- **Now** – Public comment period open from December 15 to February 2, 2026
  - Additional outreach underway to focus groups, key stakeholders
- **February through April 2026** – PSRC's boards review public comments, finalize plan document
- **May 2026** – General Assembly plan adoption



# We Want to Hear From You!

We look forward to receiving comments from your agencies

## Submit your feedback in three easy steps:

1. Review the [draft plan and supporting documents](#).
2. Share your feedback on the plan by **February 2, 2026**. Comments can be submitted by:
  - **Website:** [Comment Form](#)
  - **Email:** [RTPcomment@psrc.org](mailto:RTPcomment@psrc.org)
  - **US Mail:** 1201 3rd Ave #500, Seattle, WA 98101
3. Watch our transportation network grow!

Please share the word with your communities!

➤ [PSRC's Outreach Toolkit](#)





# Transportation System Visualization Tool

Click to Expand & Select Layers

Projects / Transportation Investments

Transit

Pedestrian & Bicycle Facilities

Freight

Roadways

Demographic / Contextual Layers

Jurisdictions / Land Use

>

Equity Focus Areas (EFAs)

...

>

People & Jobs / Transit-Supportive Densities (2050)

...

>

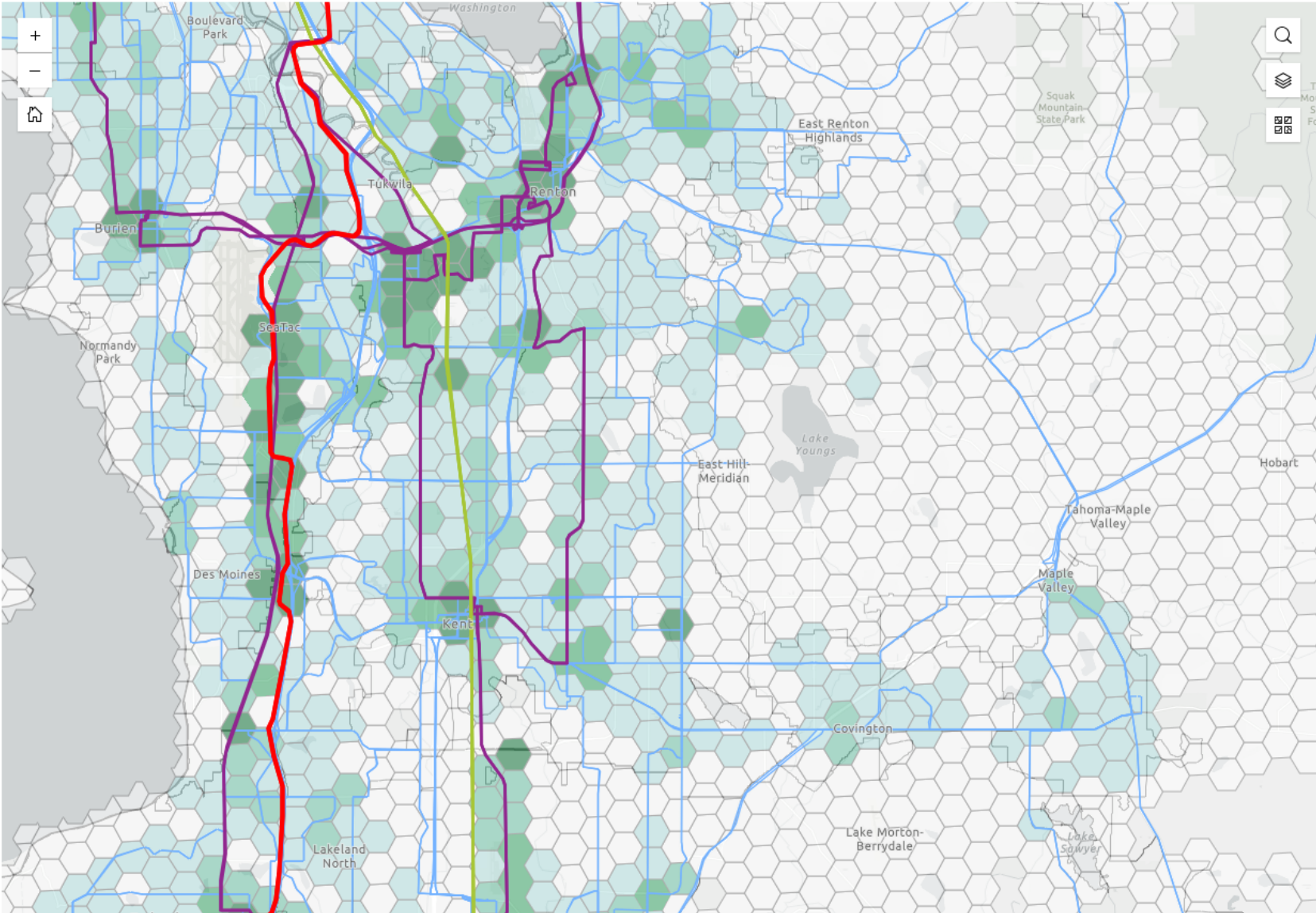
High Injury Network (HIN)

...

>

Roadway Congestion (2050)

...



## Public Transit Routes (2050)

### Transit Route Type

#### Light Rail

#### Streetcar / Monorail

#### Commuter Rail

#### Bus Rapid Transit

#### Bus

#### Ferry

## People & Jobs / Transit-Supportive Densities (2050)

### Density of People & Jobs

#### Per Acre

- At least 40 people + jobs (HCT)
- At least 25 people + jobs (Frequent Service)
- At least 15 people + jobs (All Day Service)
- At least 7 people + jobs (Local Service)
- Less than 7 people + jobs (Limited Service)



# Thank You!

**Gil Cerise**

Program Manager, Transportation Planning  
gcerise@psrc.org (206) 971-3053

**Nick Johnson**

Associate Planner, Transportation Planning  
njohnson@psrc.org (206) 464-7890



Puget Sound Regional Council