

# Recommend Certification of Comprehensive Plans

Growth Management Policy Board | January 15, 2026



*We are leaders in the region to realize equity for all. Diversity, racial equity and inclusion are integrated into how we carry out all our work.*

[psrc.org/equity](https://psrc.org/equity)



# Overview

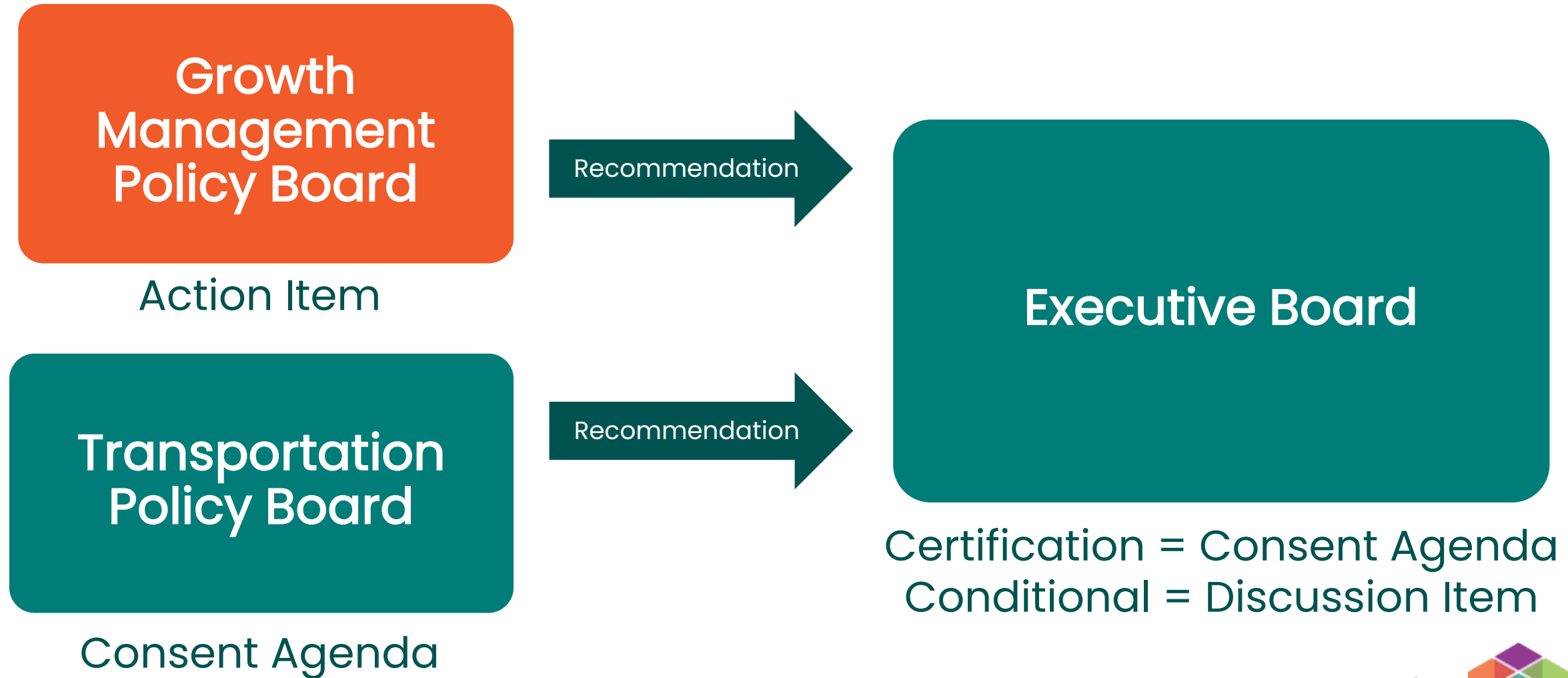


## Today:

- Plan review status update
- Recommend certification of Des Moines plan
- Comprehensive plan highlights
- Plan review process surveys



# Board Process for Certification



# Certification Status Update

## 2024 Comprehensive Plan Certifications



- As of this meeting, initiated board review for 64 plans
- Prioritized review for jurisdictions planning to apply for spring funding competitions



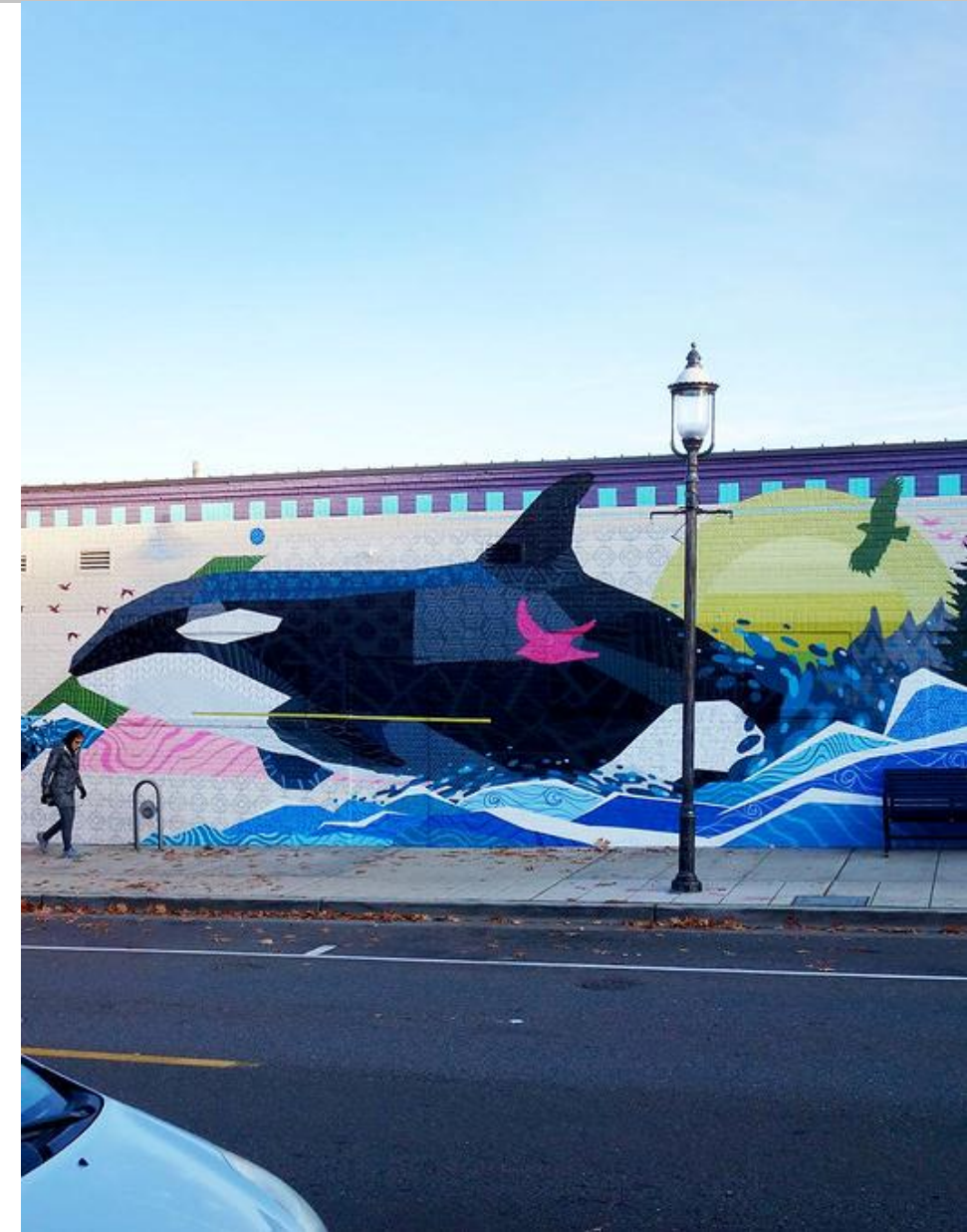


# Certification Status Update



## Adopted Plans: Not Yet Certified

- Beaux Arts Village
- Black Diamond
- Bonney Lake
- Brier
- Clyde Hill
- Darrington
- Duvall
- Eatonville
- Gold Bar
- Hunts Point
- Medina
- Mercer Island
- Normandy Park
- Pacific
- Puyallup
- Roy
- Seattle
- Yarrow Point

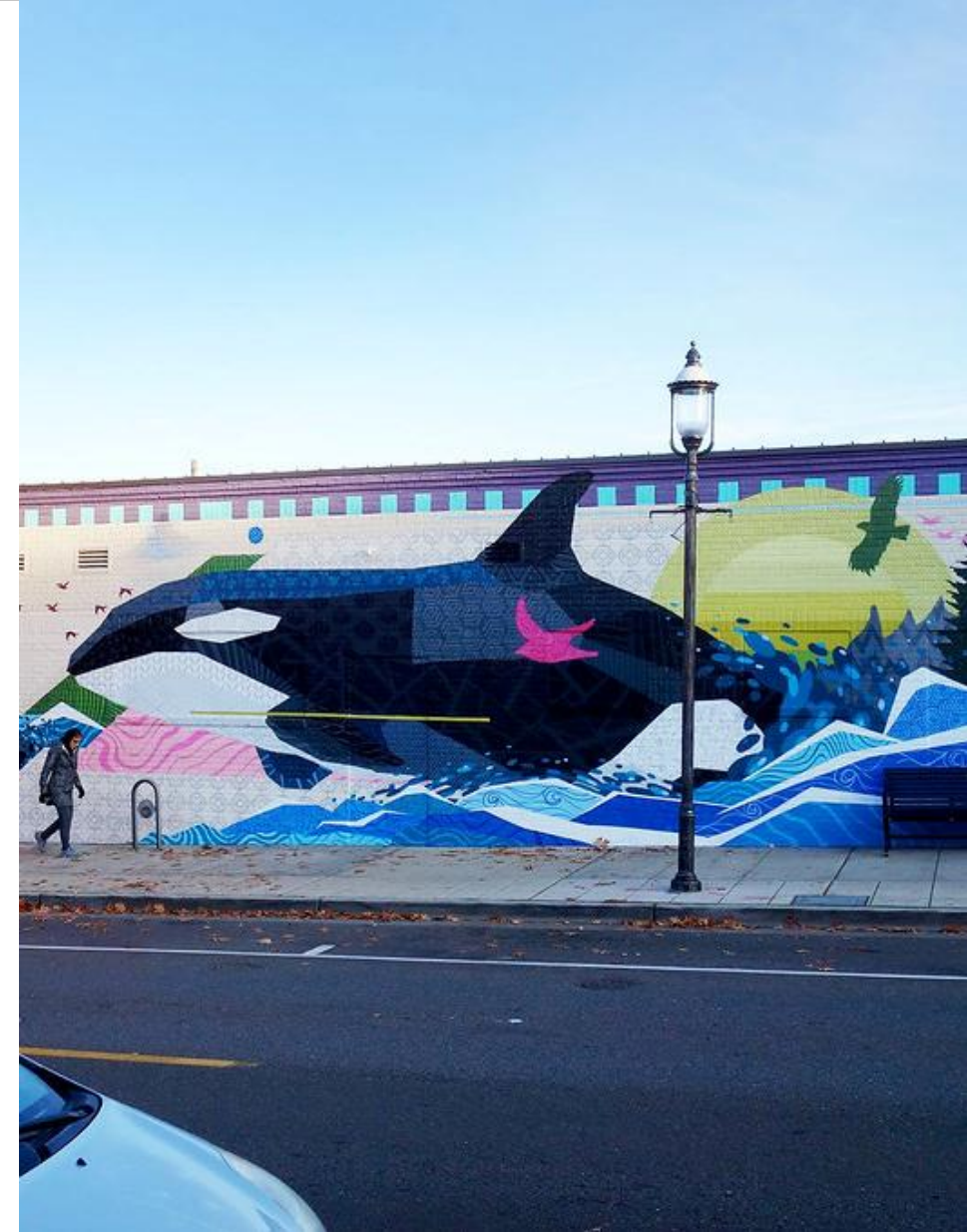


# Certification Status Update



## Not Yet Adopted:

- Bainbridge Island
- Carnation
- DuPont
- Ruston







# Plan Certifications





# Standard Certification Recommendations



**Standard comments that appear in most certification reports:**

**Climate change:** Track state guidance for climate work due by 2029

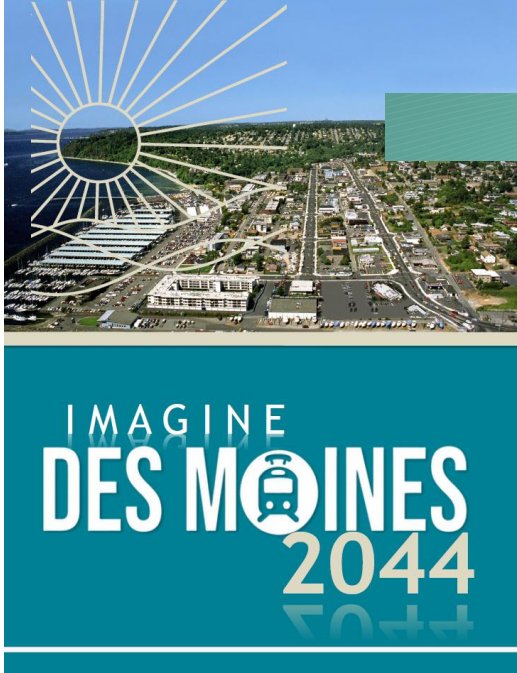
**Housing:** Continue work to support housing affordability

**Multimodal level of service:** Track updated state guidance to implement requirements by 2029





# City of Des Moines Comprehensive Plan



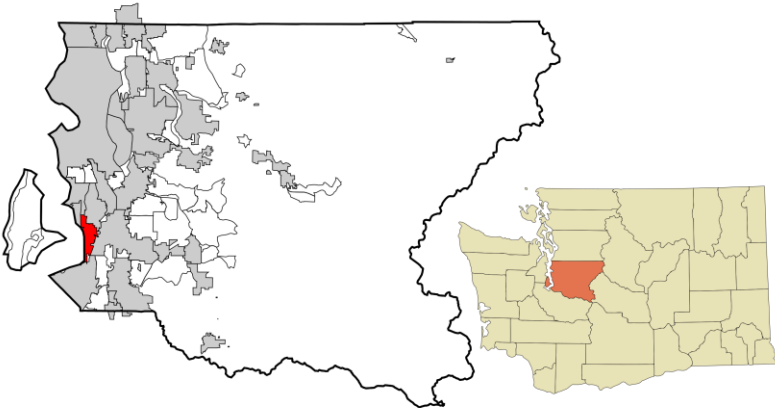
**Population:** 33,400

**Regional Geography:** HCT Communities

**Plan Highlights:** Eliminated parking requirements citywide and updated development regulations to significantly increase development opportunities downtown

## Recommended Future Work:

- **Standard comments:** Climate, housing implementation, multimodal level of service standards
- **Housing:** Fully document emergency housing capacity
- **Transportation:** Focus on adopted targets for the jurisdiction in future transportation modeling



# Certification Finding

## Plan Review



**Found the plan to be substantially consistent with the transportation-related components of VISION 2050 and GMA**

- Regional Collaboration
- Regional Growth Strategy
- Environment
- Climate Change
- Housing
- Economy
- Transportation
- Public Services





# Staff Recommendation

**Recommend the Executive Board certify that the transportation-related provisions of the Des Moines comprehensive plan conforms to the Growth Management Act and is substantially consistent with multicounty planning policies and the Regional Transportation Plan.**



# Next Steps

- February 12: **Transportation Policy Board** recommendation on consent agenda
- February 26: **Executive Board** action to certify on consent agenda





# 2024 Local Comprehensive Plan Review



## Comprehensive Plan Highlights

# Comprehensive Plan Highlights: Engagement

- **Burien:** “Shape Your City” engagement initiative
- **Bonney Lake and Stanwood:** robust public engagement process that included many opportunities to inform plan development
- **Kent:** prioritized diverse representation in engagement processes



Burien's Shape Your City

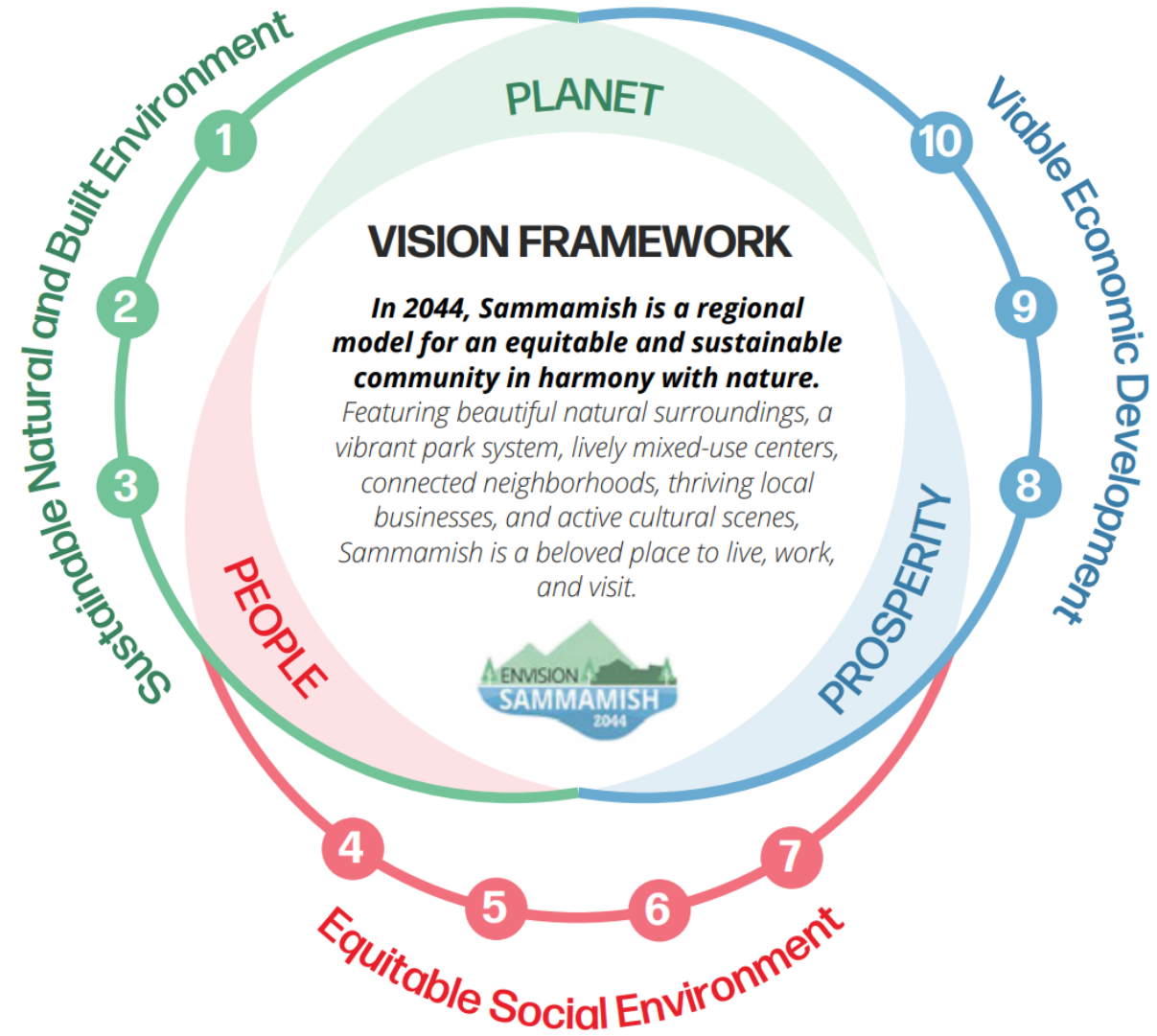




# Comprehensive Plan Highlights: Reader-Friendly Plans



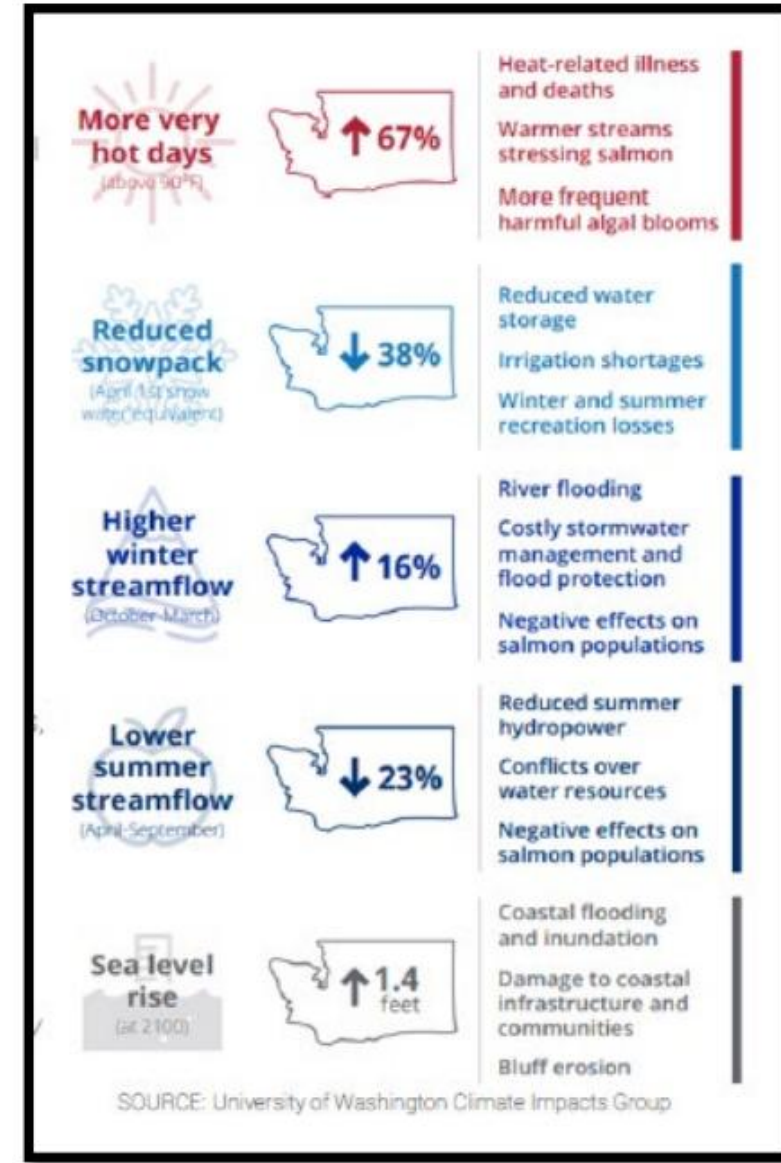
- Sammamish and Lynnwood: engaging graphics, planning concepts explained in plain English
- Marysville, Milton and Kent: compelling graphics, photos and layouts
- Poulsbo: graphically interesting and well-designed plan, done in house



# Comprehensive Plan Highlights: Climate Change



- **Kenmore:** integrated Climate Action Plan into a Climate Action element
- **Pierce County, Snohomish County, and Bellevue:** included climate vulnerability assessments
- **Enumclaw:** promotes community-wide climate resilience with a focus on vulnerable community members
- **Redmond:** prioritizes investments, policies, programs, and projects so vulnerable communities are resilient and lead the clean energy transition

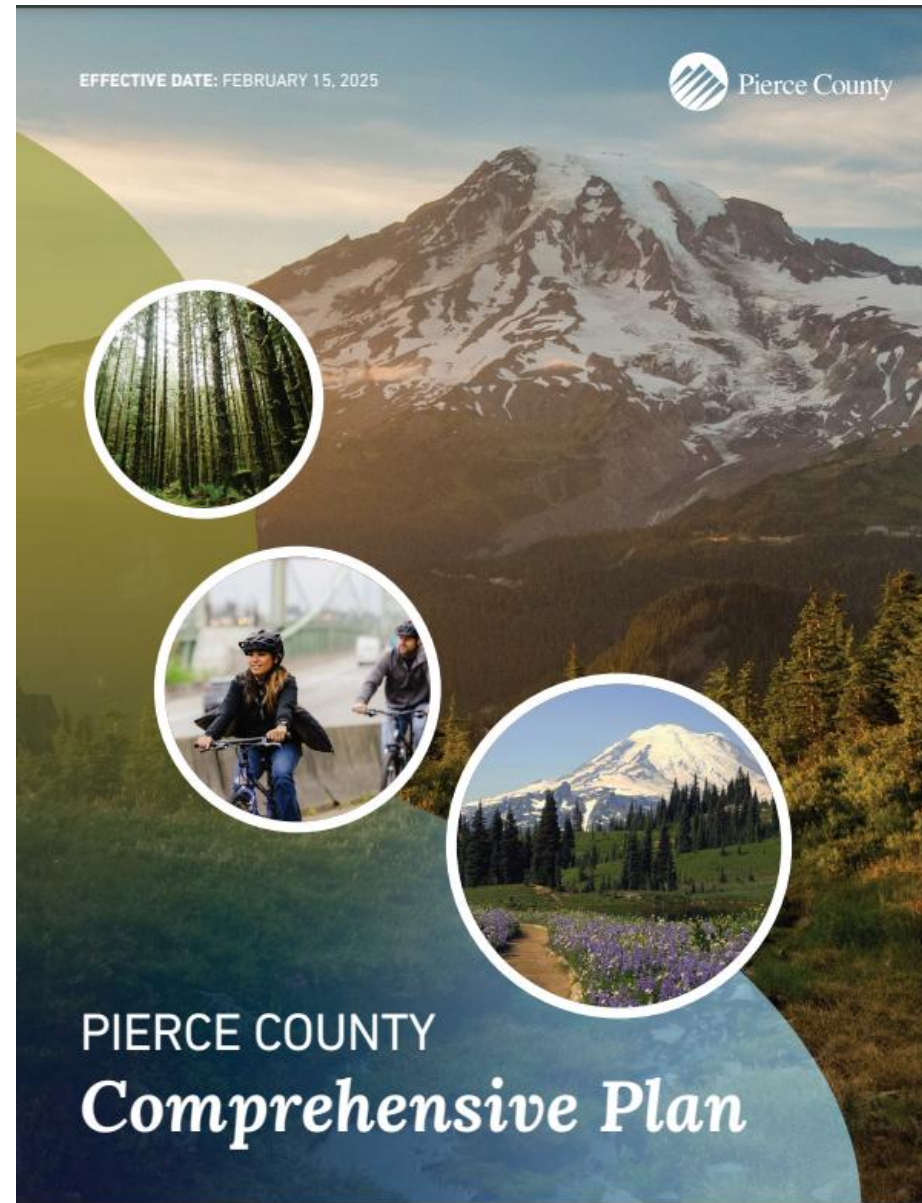




# Comprehensive Plan Highlights: Rural/UGA



- **Pierce County:** retracted its UGA and conducted a review of rural densities
- **Snohomish County:** included a policy on rural growth triggers to activate strategies, if needed, to limit rural growth



# Comprehensive Plan Highlights: Housing



- **Steilacoom:** conducted thorough racially disparate impacts analysis
- **Auburn, Bellevue, and Poulsbo:** provided clear housing capacity analyses
- **Seattle:** conducted review of costs and needed subsidies to inform their adequate provisions work
- **Kirkland:** early adopter of missing middle housing policies



Auburn Housing Element



# Comprehensive Plan Highlights: Planning Around High-Capacity Transit



- **Federal Way:** evaluated street networks and bicycle connections for light rail station area
- **Fife:** included city center element that reimagines downtown around light rail station
- **Snohomish County:** included planning for areas surrounding future light rail stations



Sound Transit Star Lake Light Rail Station

# Comprehensive Plan Highlights: Small Towns with Big Plans



- **Sultan:** many notable policies to support the transformation of downtown into a high quality, compact center
- **Pacific:** currently no downtown, identified local center for first time



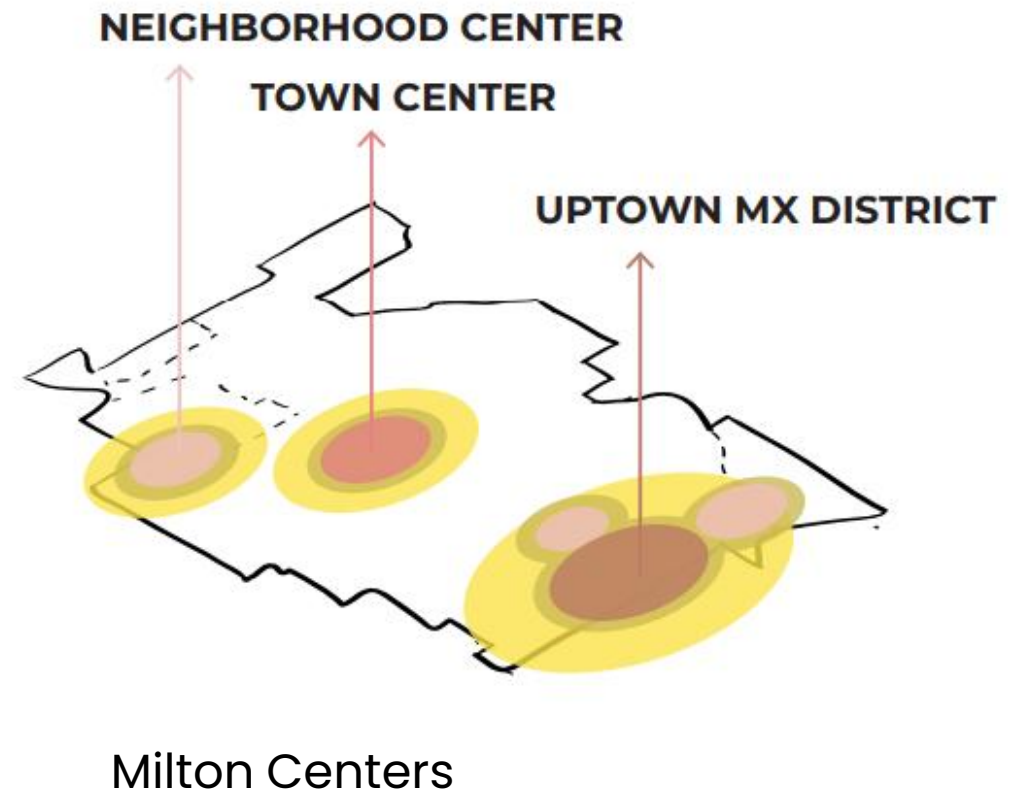
Sultan Comprehensive Plan



# Comprehensive Plan Highlights: Coordination



- Skykomish, Index, Granite Falls, Snohomish County, and Pierce County: included Tribal coordination elements and policies
- Milton/Edgewood and Fircrest/Tacoma: coordinated on shared centers
- Bothell and Auburn: provided thorough multicounty planning work, including multiple capacity analyses



- [illegible]

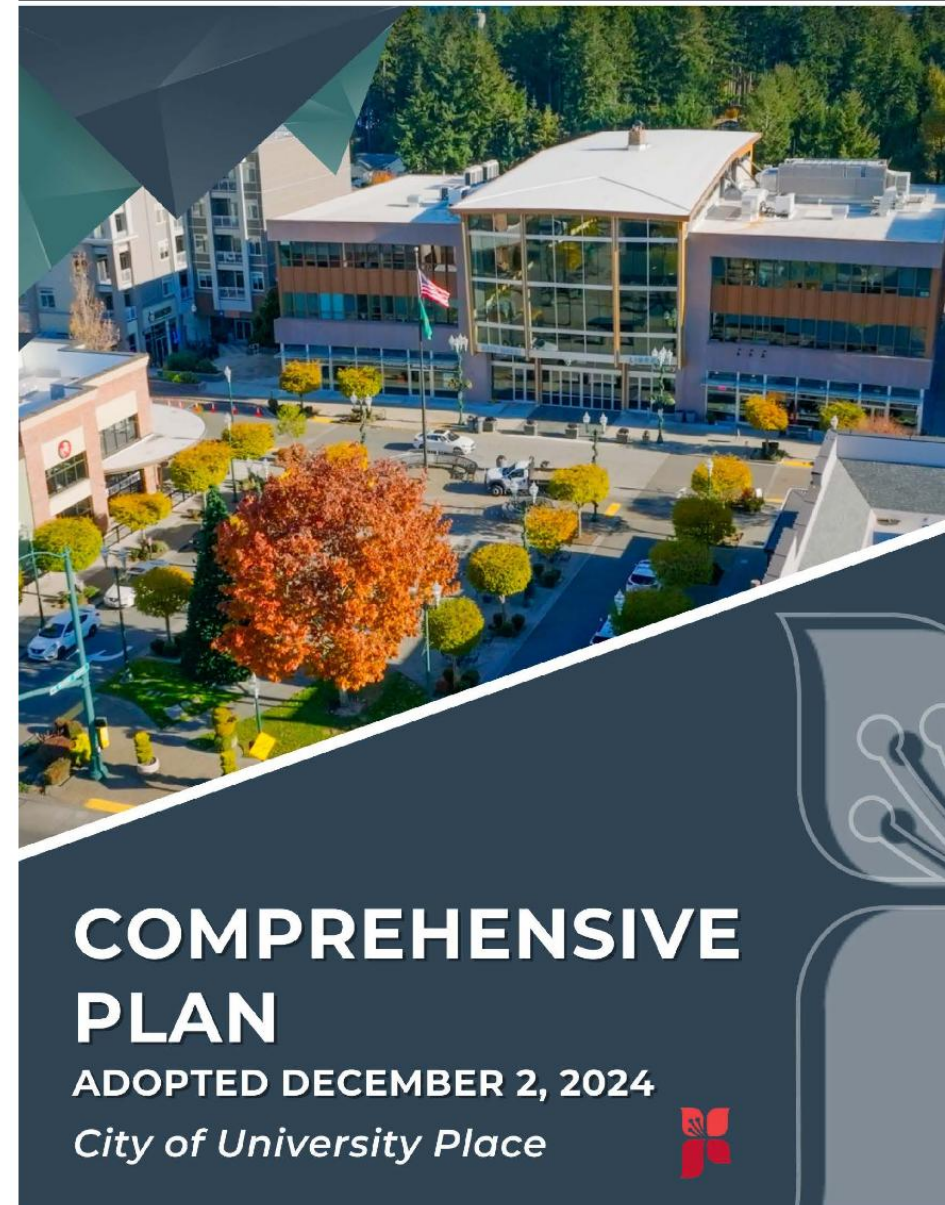
22



# Comprehensive Plan Highlights: Equitable Access to Parks



- **University Place:** emphasizes providing parks within walking distance, particularly those historically marginalized
- **Buckley and Granite Falls:** included policies to provide parks within a 10-minute walk
- **Gig Harbor:** included policy to address park service gaps for historically underserved



# Comprehensive Plan Highlights: General



- Jurisdictions completed more environmental impact statements, particularly when upzoning proposed
- More plans submitted on time. Commerce grants helped
- More parties involved in comp plan development process due to robust engagement processes



Sultan Planning Summit



# Comprehensive Plan Future Work Comments



- Standard comments on climate change, housing implementation, and multimodal level of service standards
- Other more frequently cited comments
  - Transportation finance
  - Emergency housing
  - Lack of sewer systems



Tacoma Transportation and Mobility Plan

# Plan Review Process – Planning Staff Survey



- 42 responses from 38 jurisdictions
- Respondents rated PSRC's plan review process **4.2/5** on average



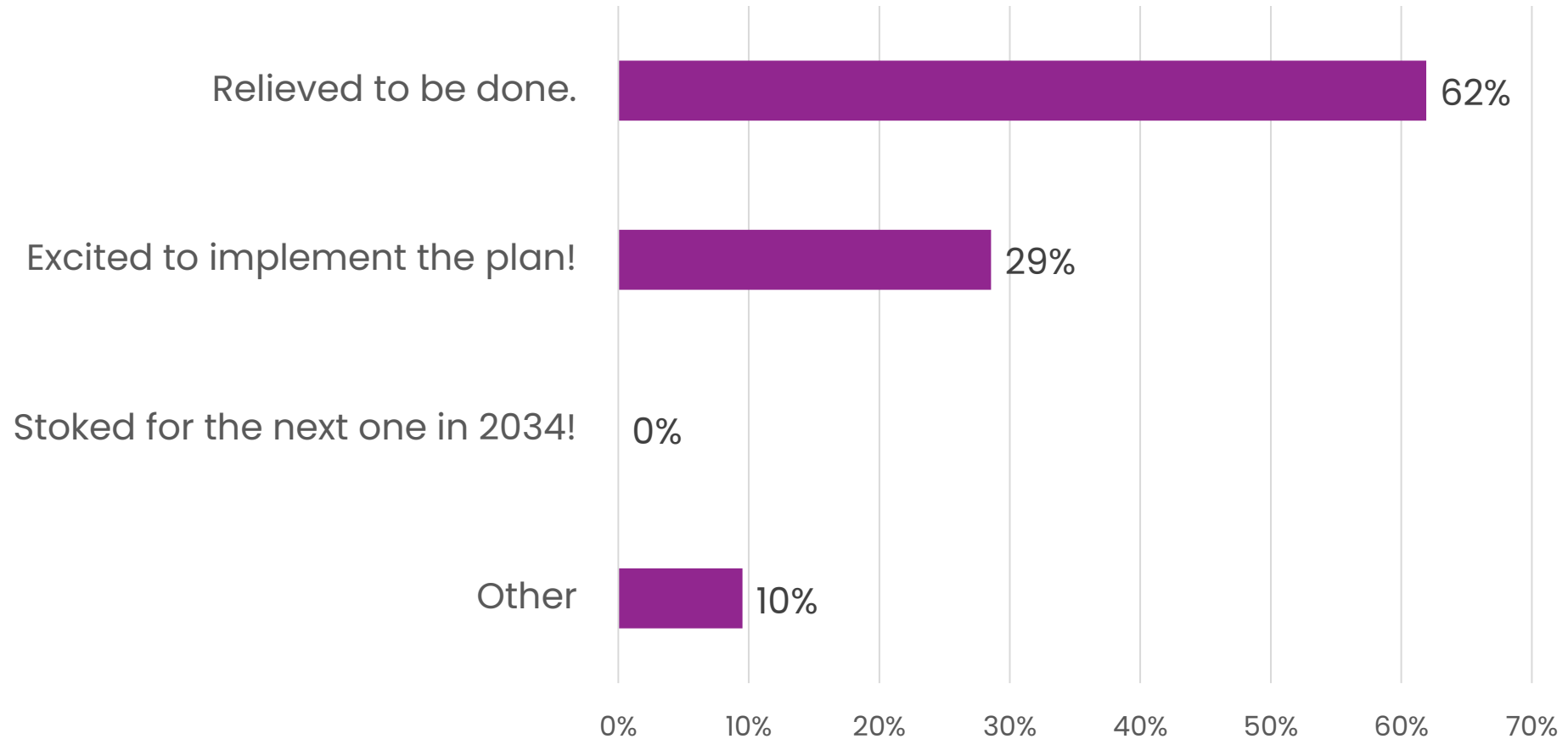
Port Orchard Comprehensive Plan—local center





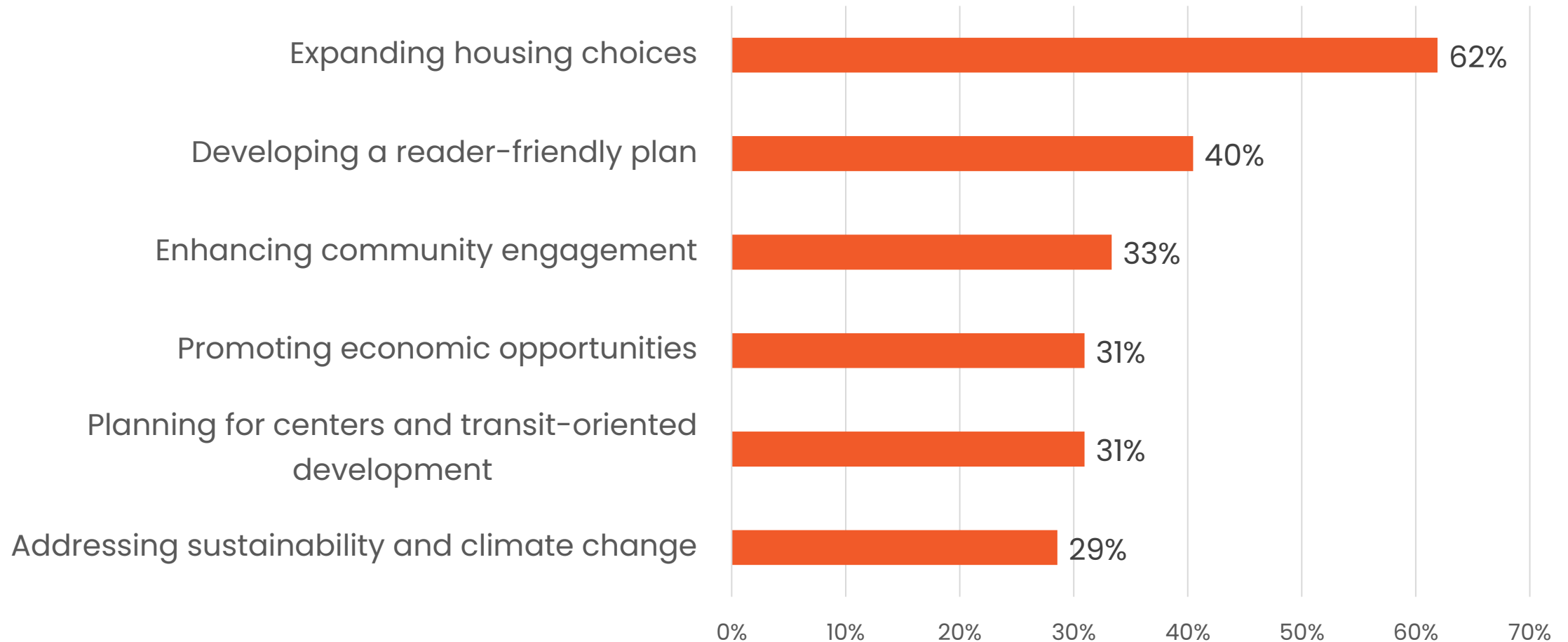
# Plan Review Process – Planning Staff Survey

How are you feeling about how the plan update process went?



# Plan Review Process – Planning Staff Survey

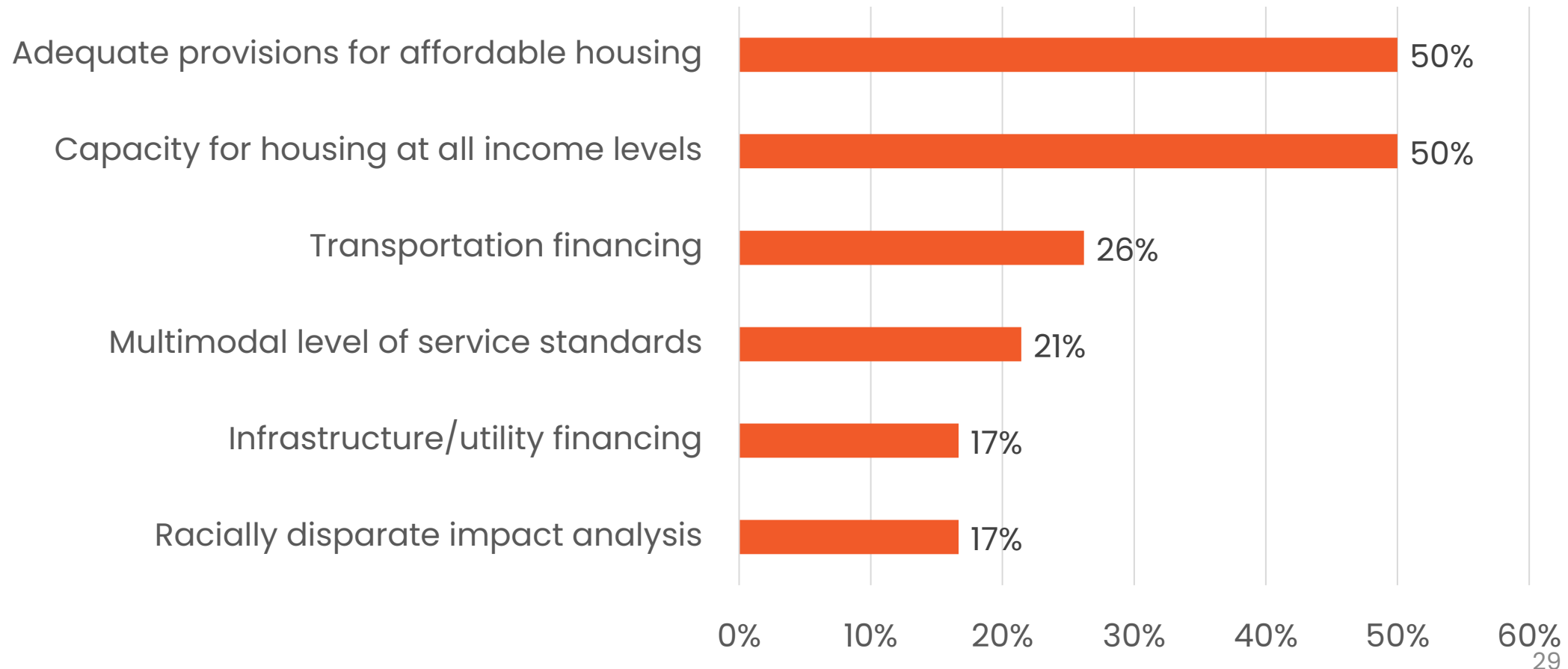
What were your community's biggest priorities in this plan update?





# Plan Review Process – Planning Staff Survey

What were the biggest challenges for your jurisdiction's comprehensive plan update?



# Plan Review Process – Planning Staff Survey



Feedback (continued):

- Most valuable parts of the plan review process: comments on draft plans and coordination with PSRC staff
- Most common recommendation for improvement: streamlining county, PSRC, and state review processes



Redmond Town Center





# Plan Review Process – GMPB Feedback



Did you have enough information to make certification decisions?

What resources were most helpful?

What could be improved about the process?





# Thank You!

**Paul Inghram, FAICP**

Director of Growth Management  
PInghram@psrc.org

**David Dixon**

Associate Planner  
DDixon@psrc.org

**Katie Enders, AICP**

Associate Planner  
KEnders@psrc.org

**Nancy Ferber, AICP**

Senior Planner  
NFerber@psrc.org

**Erika Harris, AICP**

Senior Planner  
EHarris@psrc.org

**Shaun Kuo**

Assistant Planner  
SKuo@psrc.org

**Liz Underwood-Bultmann, AICP**

Principal Planner  
LUnderwood-Bultmann@psrc.org

