

# Transportation Alternatives Program

## Project Selection Workshop

February 10, 2026



Puget Sound Regional Council

# Welcome to the 2026 Transportation Alternatives Program Project Selection Workshop

- Use the **Raise Hand** function if you would like to ask a question.
- Use the **Q&A** function if you have technical questions about Zoom.
- More information is available on PSRC's TAP webpage at <https://www.psrc.org/our-work/funding/project-selection/transportation-alternatives-program>
- The workshop recording and slides will be **posted to the TAP webpage.**



# Today's Agenda

- TAP background
- Eligibility Requirements
- Screening Form Process
- Evaluation Criteria
- Schedule
- Resources and Guidance
- Screening Form and Application Demo



# TAP Background



- Federal Highway Administration Set-Aside
- Provides funding for
  - pedestrian / bicycle improvement
  - historic preservation related to transportation
  - environmental improvement related to transportation
- Estimated \$8 million available each year for 2027 & 2028
- Requests limited to:
  - \$4 million per application
  - 2 applications per agency



# Policy Framework for PSRC's Federal Funds

- Detailed policies and project selection procedures
- Adopted by PSRC Executive Board prior to each funding cycle
- Funds distributed approximately every 2–3 years
  - Program funds into the future
  - Current process will distribute FFY 2027–2028 funds
- Based on VISION 2050 policies



# Tracking of PSRC FHWA-Awarded Projects

## Goal = Efficient use of PSRC funds

- Projects delivered in a timely manner, cost of delays are minimized
  - Annual delivery targets = “use it or lose it”
- **Project Tracking Policies** updated over time, address all funding programs and processes
- Progress report required once or twice per year from time of funding thru project completion
- Each project award tied to a specific fiscal year
  - **June 1<sup>st</sup> obligation deadline**
  - Opportunity to request a one-time extension if delay due to factors beyond the sponsor agency's control, subject to PSRC staff recommendation and board approval

PSRC's FHWA obligation deadline is the date by which a *complete and accurate* funding authorization package must be submitted to the sponsor's WSDOT regional office.



# TAP Eligible Activities

## Pedestrian and Bicycle

- Active transportation infrastructure
- Rail-to-Trail conversions
- Safe Routes to School infrastructure and activities
- Activities furthering vulnerable road user safety assessments

## Historic Resources

- Preservation and rehabilitation of historic transportation facilities
- Archaeological activities related to impacts from implementation of a transportation project

## Environmental

- Environmental projects related to transportation:
  - Stormwater Management
  - Pollution Prevention
  - Wildlife Habitat Connectivity
  - Vegetation Management



# Eligible Sponsors

- Local Governments
- Transit Agencies
- Tribal Governments
- Natural Resource Agencies
- School Districts
- Non-profit Entities

Sponsors must have Certification Acceptance (CA) status or enlist a sponsor agency with CA status



# Other Eligibility Requirements

- Must be meet **TAP scope eligibility** requirements
- Must be consistent with the **Regional Transportation Plan**
- Must be consistent with **local comprehensive plan**
- Must meet **Federal Functional Classification** requirements or exceptions
- Must show consideration of **pedestrian & bicycle facilities**
- Must meet **PSRC project readiness** requirements
- Must meet **project finance** requirements



# Major TAP Components for Applicants

## 1. Screening Form

- Provide key information needed to confirm project eligibility
- Information reviewed by PSRC – sponsor provided opportunity to make corrections and clarifications

## 2. Funding Application

- Includes all screening form information with corrections & clarifications made
- Provide responses to evaluation criteria questions → Scored



# Screening Form Purpose & Considerations

**Purpose:** Verify eligibility of a project to be awarded PSRC funds prior to completion of the full grant application

## Considerations

- For each project entered into the competition, a screening form **must be submitted by the deadline** and **approved by PSRC** prior to submitting the full funding application
- Screening form deadline is **February 27**
- Screening Form Checklist & Guidance provided with the Call for Projects

**PLEASE CHECK THE CHECKLIST!**



# Screening Form Process

1. Sponsor provides key eligibility information via screening form
2. PSRC staff reviews screening form information, and either
  - a) Determines project meets all eligibility requirements and approves, OR
  - b) Identifies areas where clarifications or corrections need to be made to confirm eligibility, and returns to sponsor to address

*Sponsor must work with PSRC and fully resolve comments and questions before PSRC approval can occur*

3. Submitted/approved screening form information will be pre-filled when beginning project's full funding application

*Sponsor may proceed with the funding application prior to approval if desired, but all screening form comments must be resolved and updated in the submitted application*



# Screening Form Updates Since Last TAP

- The information being requested has not changed
- Project Readiness / Financial Plan changed from scored criteria to eligibility criteria
- Project Readiness Guidelines established in 2024
- PSRC comments and questions must be resolved and updates completed in the project application, before the application may be submitted



# General Information

- **Project Title, Description & Location**
  - Please be clear and concise!
  - Project Description should include scope elements only – not project justification or benefits
- **Certification Acceptance (CA) Status**
  - Designated by WSDOT
  - CA status indicates sponsor agency has demonstrated understanding of federal rules regarding project development and administration
  - Project sponsors without CA status must enlist a CA sponsor agency – *confirmation from CA sponsor required*



# Plan Consistency

- **Regional Transportation Plan (RTP)**
  - Project  $\geq$  regional capacity project threshold = must be on the RTP's financially constrained (candidate or approved status) on the current Regional Capacity Project list
  - Project  $<$  regional capacity project threshold and consistent with regional policies = programmatic, and consistent with RTP
- **Local Plans**
  - Project must be in, or consistent with, a PSRC-certified (or conditionally certified) city or county comprehensive plan
  - Project must be consistent with applicable transit and/or state plans
  - State or transit project must also be consistent with local plan(s)



# Federal Functional Classification

- A roadway must be approved on the federally classified roadway system before projects on it may use federal transportation funds
- OR, meet guidelines for exceptions
  - Any bicycle and/or pedestrian project
  - Project not on a roadway
  - Any transit project, including equipment purchase or park & ride lot
- Funds may be requested for a project on a roadway planned to be added to the functionally classified network but currently is not.

*If funds are awarded, the jurisdiction must complete the federal functional classification change process—with FHWA approval completed—prior to obligating the funds.*



# Pedestrian & Bicycle Consideration

- Per federal rules, pedestrian & bicycles must be considered in project development
  - Identify existing non-motorized facilities, and those included in project scope, or
  - If none exist or are proposed with the project, provide an explanation per the guidance provided in the checklist.



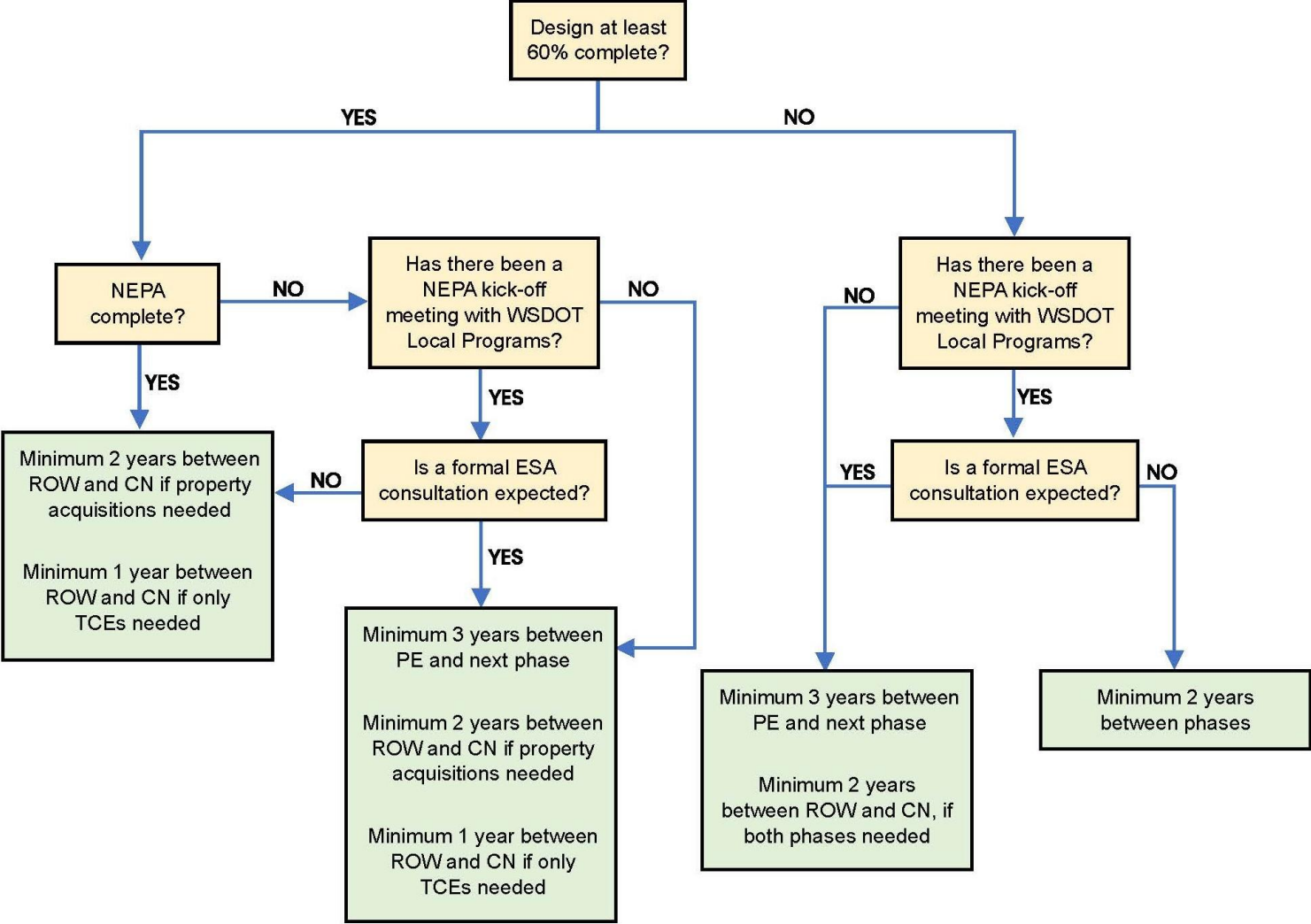
# Project Readiness

## *Will the project be ready to use PSRC funds by the requested date?*

- Must demonstrate that the major project milestones are scheduled sufficiently to allow the project to deliver on time.
- This includes:
  - 1) understanding and identifying the obligation prerequisites that apply to the project,
  - 2) documenting the status of each at the time of application, and
  - 3) providing realistic completion dates for those not yet completed.
- PSRC has developed guidelines for minimum timelines between phases, based on analysis of delivery and extension request trends over last several years



# Project Phase Minimum Timelines



Schedule depends on:

- Design status
- Permitting needs
- Right-of-Way needs



# Project Readiness Requirements



- Project schedule should reflect the minimum timeline defined in this guidance, or
- If specific circumstances are indicated to justify a shorter project timeline, PSRC will review case-by-case basis to make an eligibility determination
  - Will consult with WSDOT if needed

*Reminder. Projects that progress faster than planned generally have opportunity to advance a phase to an earlier program year*



# Project Finance

- **Funding request**
  - Single phase only (e.g., design, right-of-way, or construction)
  - In combination plus all other funding must be adequate to fully fund the phase
  - Cannot exceed maximum request amount
  - Local match funds must be at least 13.5% of total phase cost
- **Financial documentation**
  - Must show that, in combination with the requested funds, all other funds needed to implement the requested phase are secured or reasonably expected
  - *Detailed financial constraint guidance provided on PSRC website*
- **Full project budget**, including secured and/or anticipated funding sources, must be provided



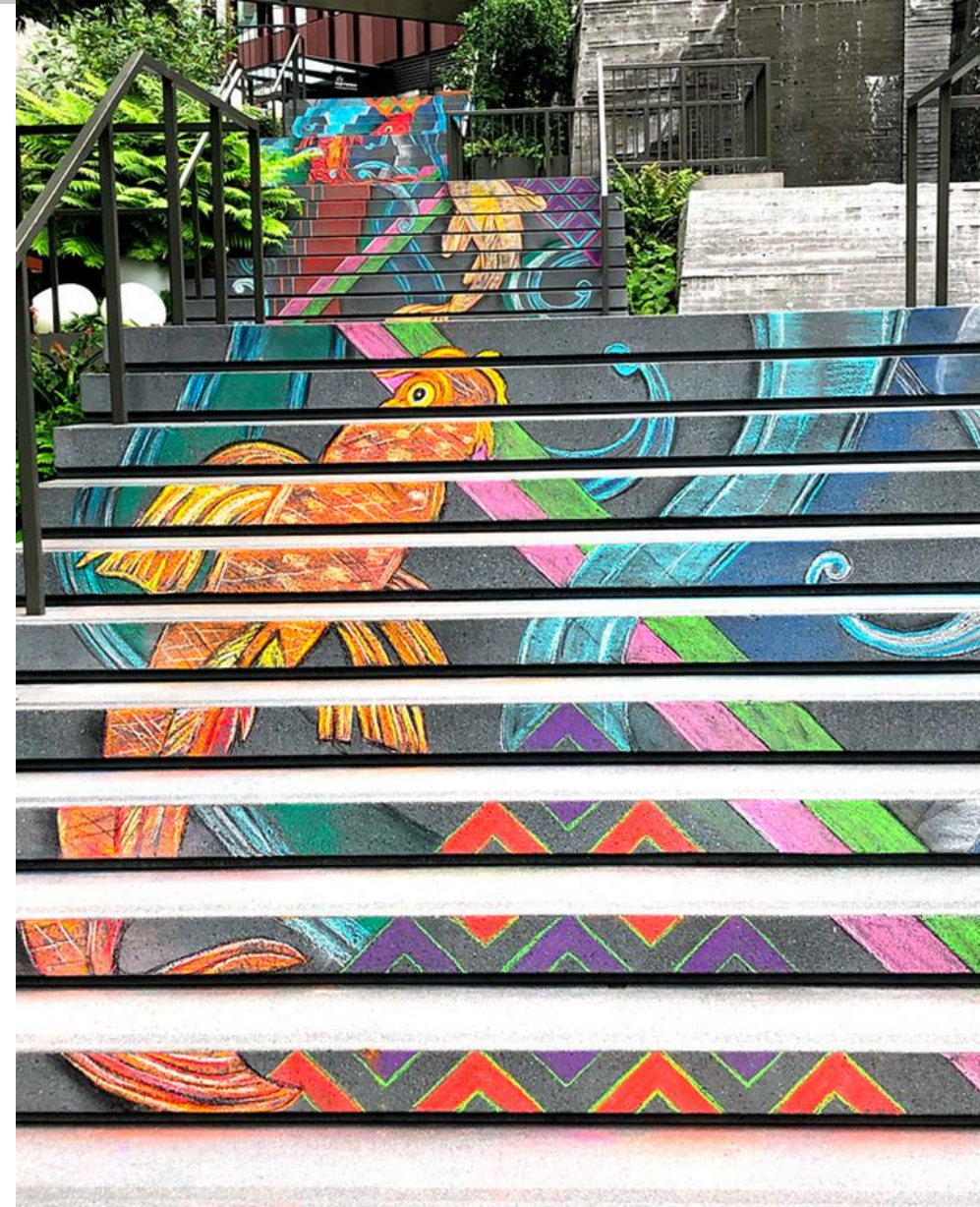
# Evaluation Criteria Overview

## Criteria for All Projects – 30 points

- Support for Centers

## Category-Specific Criteria – 70 points

- Pedestrian and Bicycle Project
- Historic Resource Project
- Environmental Project



# Support for Centers – All Categories



## Describe

- Support for existing & planned housing and employment densities
- Support for development/redevelopment plans and activities



# Pedestrian & Bicycle – Circulation, Mobility & Accessibility

Describe how project

- Extends or adds to ped/bike facility network
- Addresses community needs and reduces barriers
- Provides connections to transit
- Provides public access and benefits to various user groups

Discuss if there will be loss of opportunity if not funded



# Pedestrian & Bicycle – Community Support



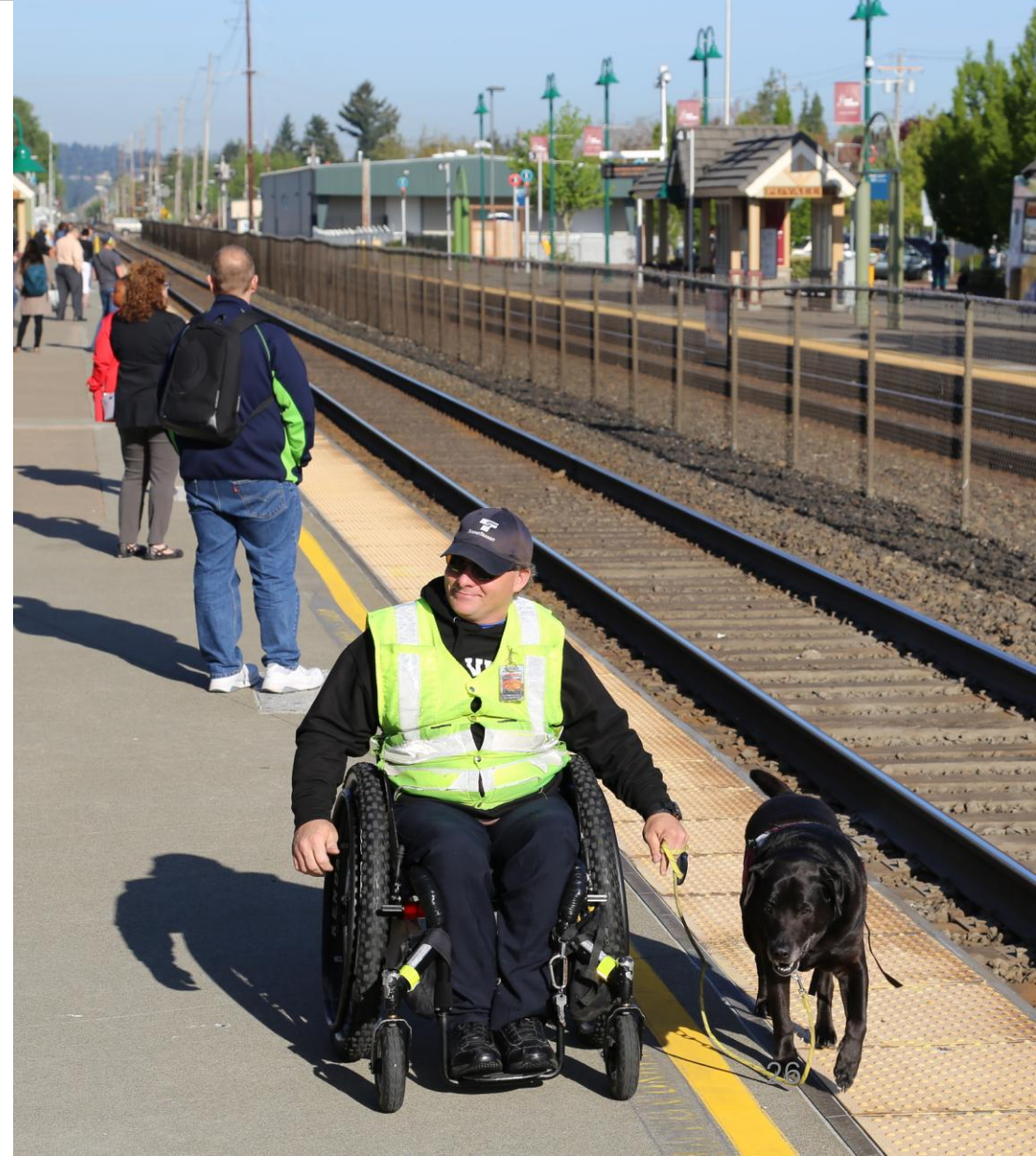
- Identify population groups served by project and how it addresses transportation disparities/gaps for those groups
- Describe public outreach process that led to the development of the project
- Describe how the outreach influenced the project characteristics, (e.g., scope, location, design, timing, etc.)



# Pedestrian & Bicycle – Safety

Describe how the project

- Addresses safety and security
- Protects vulnerable users
- Reduces reliance on enforcement / designs for decreased speeds
- Relates to agency's adopted safety plans / policies



# Historic Resources



## Describe

- Historic significance of facility
- Relation of project to larger historic preservation plan
- Transportation connection
- Plan for using the facility after project is complete
- Public access to the facility
- Long term preservation / maintenance plans
- Loss of opportunity if not funded



# Environmental

## Describe

- Relation to the transportation system
- Public access to the site
- How project goes above required environmental mitigation
- Long-term maintenance plan
- Loss of opportunity if not funded



# Schedule

- **February 2** – Release Call for Projects
- **February 10** – TAP workshop
- **February 27** – Eligibility screening forms due to PSRC
  - *PSRC staff review – ‘first come, first served’*
  - *Comments returned no later than March 16*
  - *Comment resolution must be confirmed by PSRC prior to submitting application!*
- **April 3** – Project applications due to PSRC
- **May 20 (& 21 if needed)** – Project Selection Committee meeting(s)
- **June–July** – Public Comment & Board Review/Approval
- **July–September** – Program awards into Regional and State TIP



# Resources and Guidance

Provided on TAP web page:

- Checklists with detailed instruction & guidance
  - *Screening Form*
  - *Application*
- Eligibility Information
- Project Evaluation Criteria
- Financial Constraint Guidance

## Transportation Alternatives Program

[Home](#) > [Our Work](#) > [Funding](#) > [Project Selection](#)  
> Transportation Alternatives Program

The Transportation Alternatives Program (TAP) is a Federal Highway Administration funding program for community-based transportation improvements, such as bicycle and pedestrian facilities, historic preservation of transportation assets, environmental mitigation and others.

The 2026 TAP project selection process is currently underway. PSRC invites agencies with eligible projects to submit applications for the estimated \$16 million available through this program for federal fiscal years 2027 - 2028. **Each project sponsor is limited to two applications. The maximum request per application is \$4 Million.**

### 2026 Call for Projects Materials and Resources

Close all —

#### Resources and Guidance

- [Schedule \[PDF/98KB\]](#)
- [TAP Eligibility \[PDF/72KB\]](#)
- [Evaluation Criteria \[PDF/141KB\]](#)
- [Financial Constraint Guidance](#)
- [Screening Form Checklist and Guidance \[PDF/197KB\]](#)
- [Application Checklist and Guidance \[PDF/191KB\]](#)



# Online Screening Form and Application

## PSRC's 2026 Transportation Alternatives Program

The Transportation Alternatives Program (TAP) provides funding for community-based transportation improvements, such as pedestrian and bicycle facilities, historic preservation of transportation assets, environmental mitigation, and others.

Interested project sponsors must complete an eligibility screening form by **11:59 pm on February 27, 2026**. Sponsors must submit a TAP application to PSRC by **11:59 pm on April 3, 2026**.

Please select the form you are completing.

- Eligibility Screening Form
- Grant Application





# Questions?



# Thank You!

**Doug Cox**

dcox@psrc.org  
(206) 971-3050

**Mitch Koch**

mkoch@psrc.org  
(206) 464-7537

**Jennifer Barnes**

jbarnes@psrc.org  
(206) 389-2876



Puget Sound Regional Council