

# Regionalism in the Puget Sound

February 27, 2026



Puget Sound Regional Council

# Central Puget Sound Region

- 4.5 million people
- 2.4 million jobs
- 4 counties: King, Pierce, Snohomish, and Kitsap
- 82 cities and towns
- Urban and rural
- 6,300 square miles
- 1,000 square miles in urban growth areas

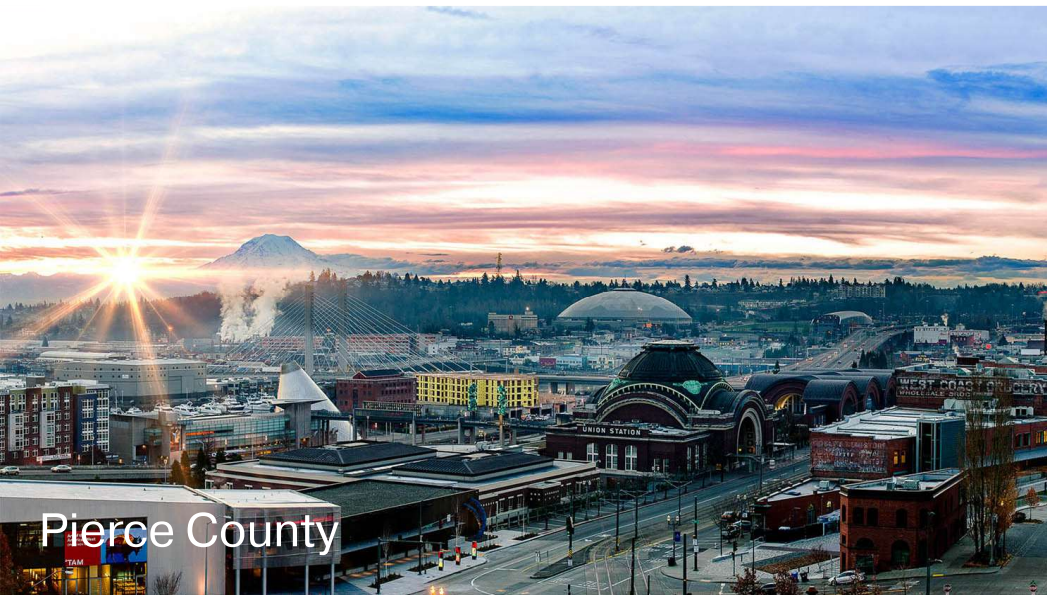




King County



Kitsap County



Pierce County



Snohomish County

# Regionalism



# Puget Sound Region 1960

Seattle population: **557,087**  
Region population: **1,512,979**  
WA: **2.866 million** | Iowa: **2.76 million**



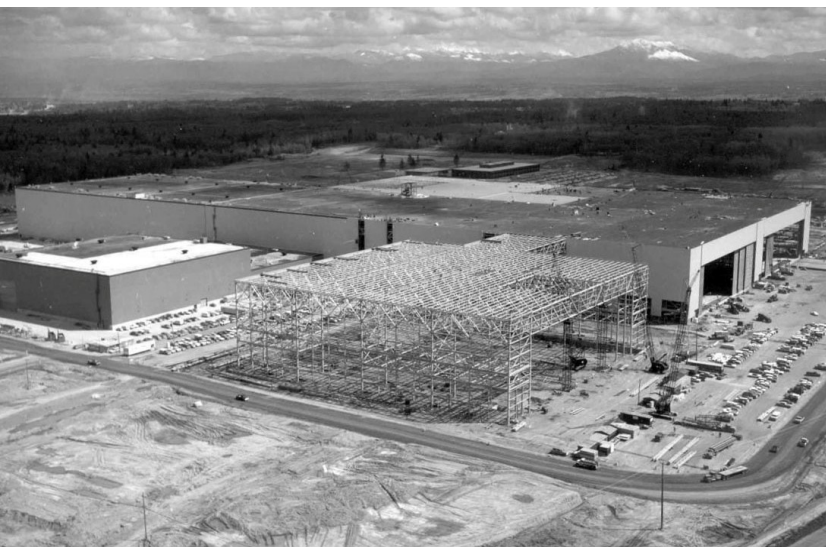
# Space Needle Doodle



# Puget Sound Region 1962

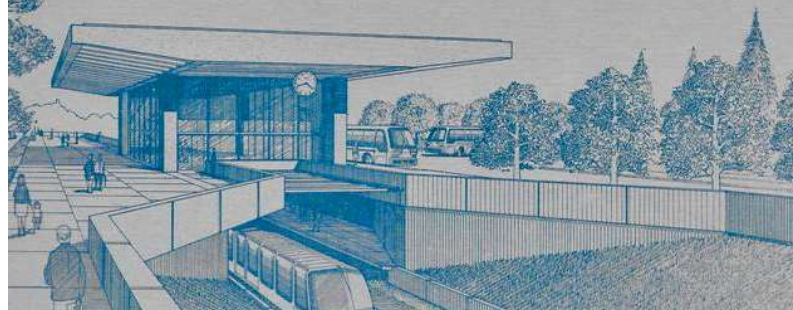



# Boeing Boom



# Forward Thrust

**DON'T GO BUST**  
with FORWARD THRUST





Take one moment and think about the sort of place we'll be handing to our children and their children.

We'll ride on fast, safe electric trains throughout Metropolitan Seattle.

We'll enjoy more than two hundred new parks and recreational centers.

We'll have new swimming pools, new tennis courts, new boat ramps, new golf courses.

We'll drive on safer, well-lighted arterials.


We'll go to dances and meetings in conveniently located community centers, complete with classrooms, theatres, and gymnasiums.

We'll attend football games and circuses and political rallies in a large all-weather stadium.

We'll have better fire protection, pollution-free lake and Sound beaches, less chance of flood or storm damage.

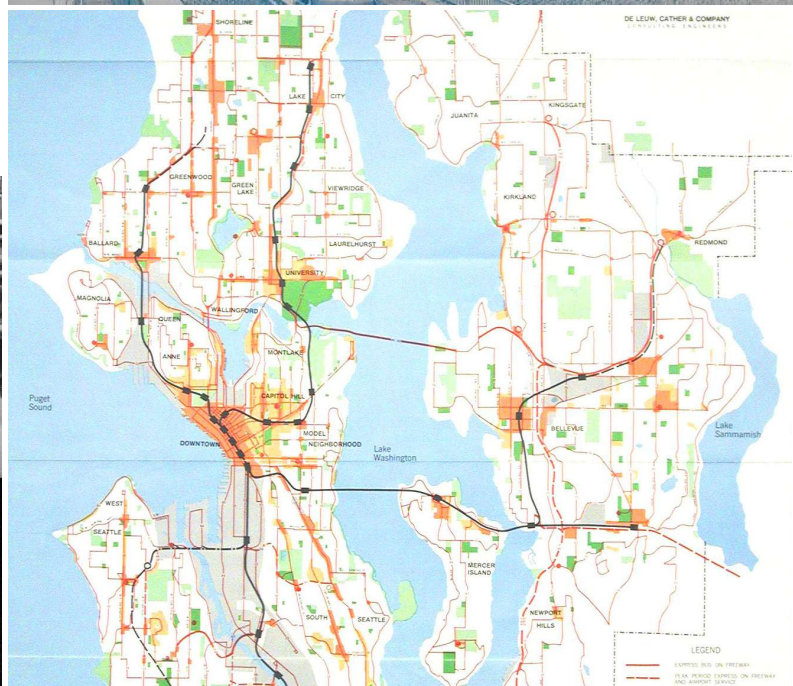
All this happened because we took the time and had the good sense to vote 'Yes on Tuesday, February 13, 1968.

This Voter Information Supplement paid for by voluntary contributions and distributed by Decision Committee for Forward Thrust, Inc., Thomas E. Bolger, Chairman, 2201 White-Henry-Stuart Building, Seattle, Washington 98101; M-146-4-842



**750,000 more people are coming to King County!**

**Will we just move over?  
Or will we move ahead?...**



# Boeing Bust



# Seattle Rail Plan



Voted down:  
1968 and 1970



# Paul Allen and Bill Gates At Lakeside School



# Population Growth 1960-1990

## Seattle

1960 557,087

1990 516,259

## Region

1960 1,512,979

1990 2,748,895



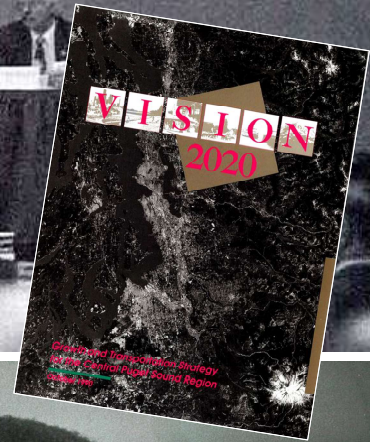
# Regional Sprawl



# Response From State of Washington



# PSRC Formed in 1991



# VISION 2050

- Adopted in October 2020
- Regional plan for 5.8 million people
- Guide for a healthy environment, thriving communities, and strong economy



Environment

Mobility

Housing

Equity

Jobs

Climate



**REGIONAL POLICY DIRECTION**

**VISION 2050**

—Multicounty Planning Policies—  
—Regional Growth Strategy—

**DETAILED FUNCTIONAL IMPLEMENTATION PLANS**

**Regional Transportation Plan**

—Metropolitan Transportation Plan—

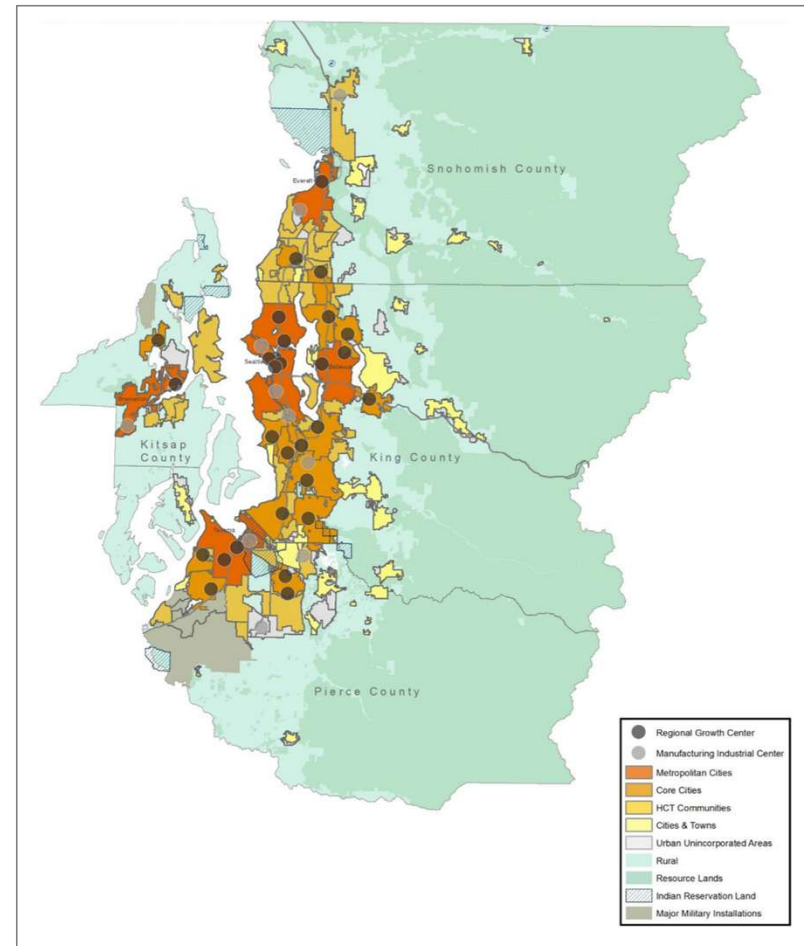
**Regional Economic Strategy**

—Comprehensive Economic Development Strategy—



# Regional Growth Strategy

- Largest share of growth planned for the largest cities in the region.
- 65% of region's population growth and 75% of employment growth in regional growth centers & station areas
- Lower growth allocations in urban unincorporated and rural compared with long-term trends





Bellevue



Paine Field



Port of Tacoma



South Lake Union





Community Transit Swift BRT



Sound Transit Sounder



Kitsap Transit Fast Ferry

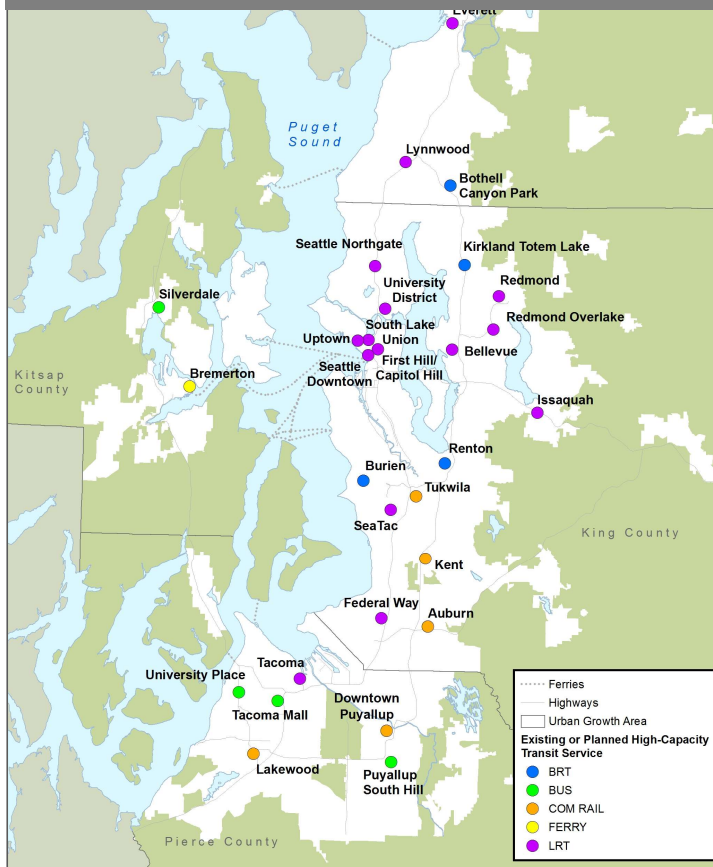


Sound Transit Link

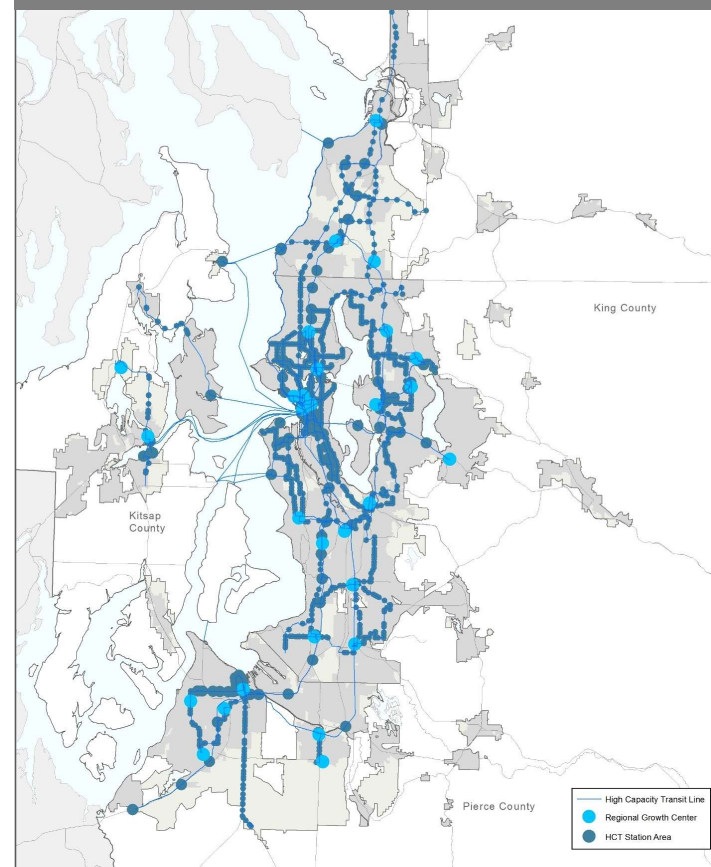


# Connecting Transit to Centers

Regional Growth Centers by Transit Service



Regional Growth Centers and HCT Station Areas

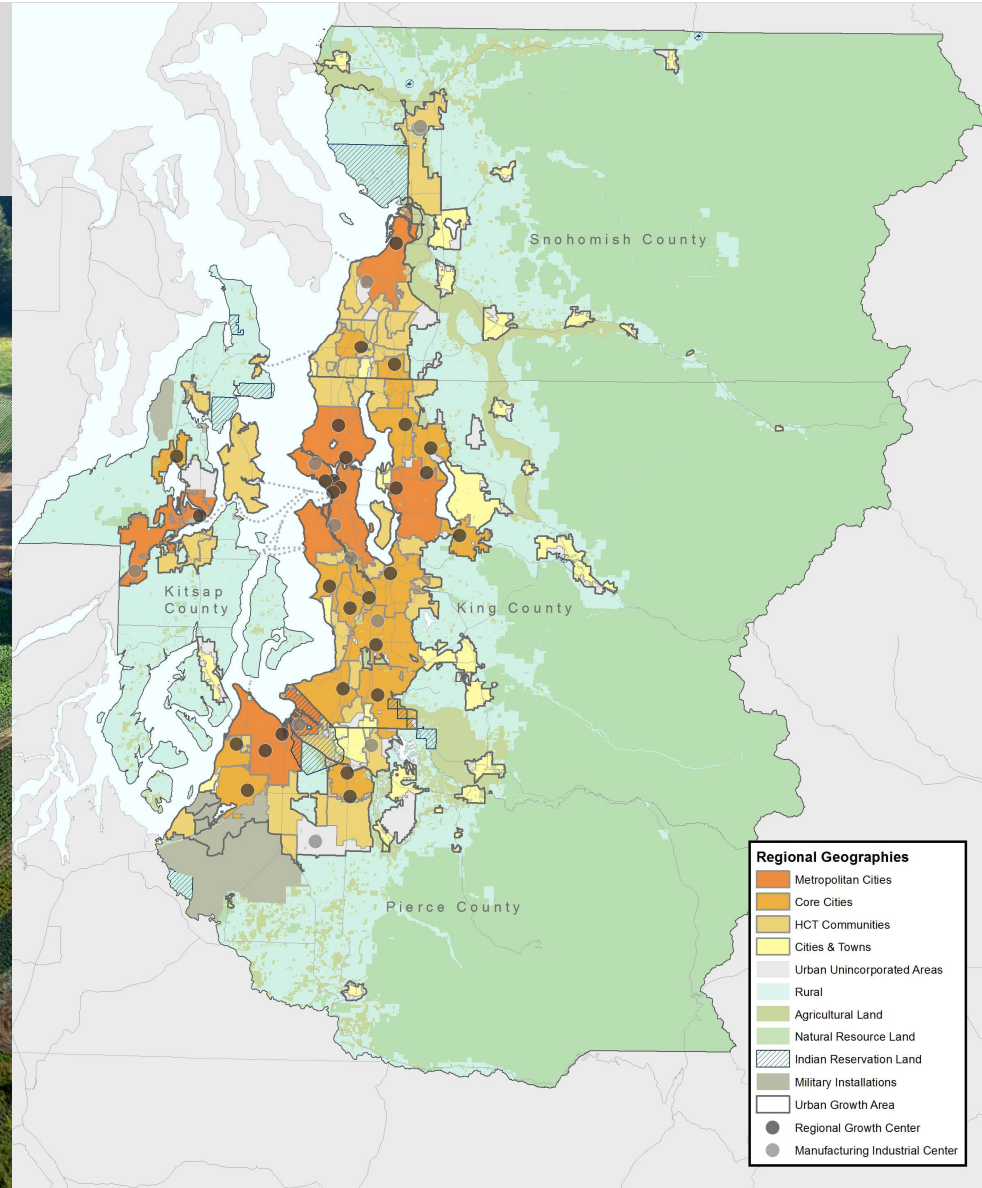


# PSRC's VISION 2050



Regionally, 97% of permitted housing units are in cities and urban areas

Compared to 72% in 1991



Regional Geographies	
Orange	Metropolitan Cities
Dark Orange	Core Cities
Yellow	HCT Communities
Light Yellow	Cities & Towns
Light Green	Urban Unincorporated Areas
Medium Green	Rural
Dark Green	Agricultural Land
Lightest Green	Natural Resource Land
Hatched	Indian Reservation Land
Grey	Military Installations
White	Urban Growth Area
Black Dot	Regional Growth Center
Grey Dot	Manufacturing Industrial Center

# Population Growth 1960–Present

Seattle

Region

1960 557,087

1960 1,512,979

1990 516,259

1990 2,748,895

2025 816,600

2025 4,534,300



# Population Growth 1960–Present



## Seattle

1960	557,087
1990	516,259
2025	816,600

---

## Boston

1960	697,197
1990	574,283
2024	673,458

---

## San Francisco

1960	740,316
1990	723,959
2024	827,526





Thank you.

**Josh Brown**  
jbrown@psrc.org

