

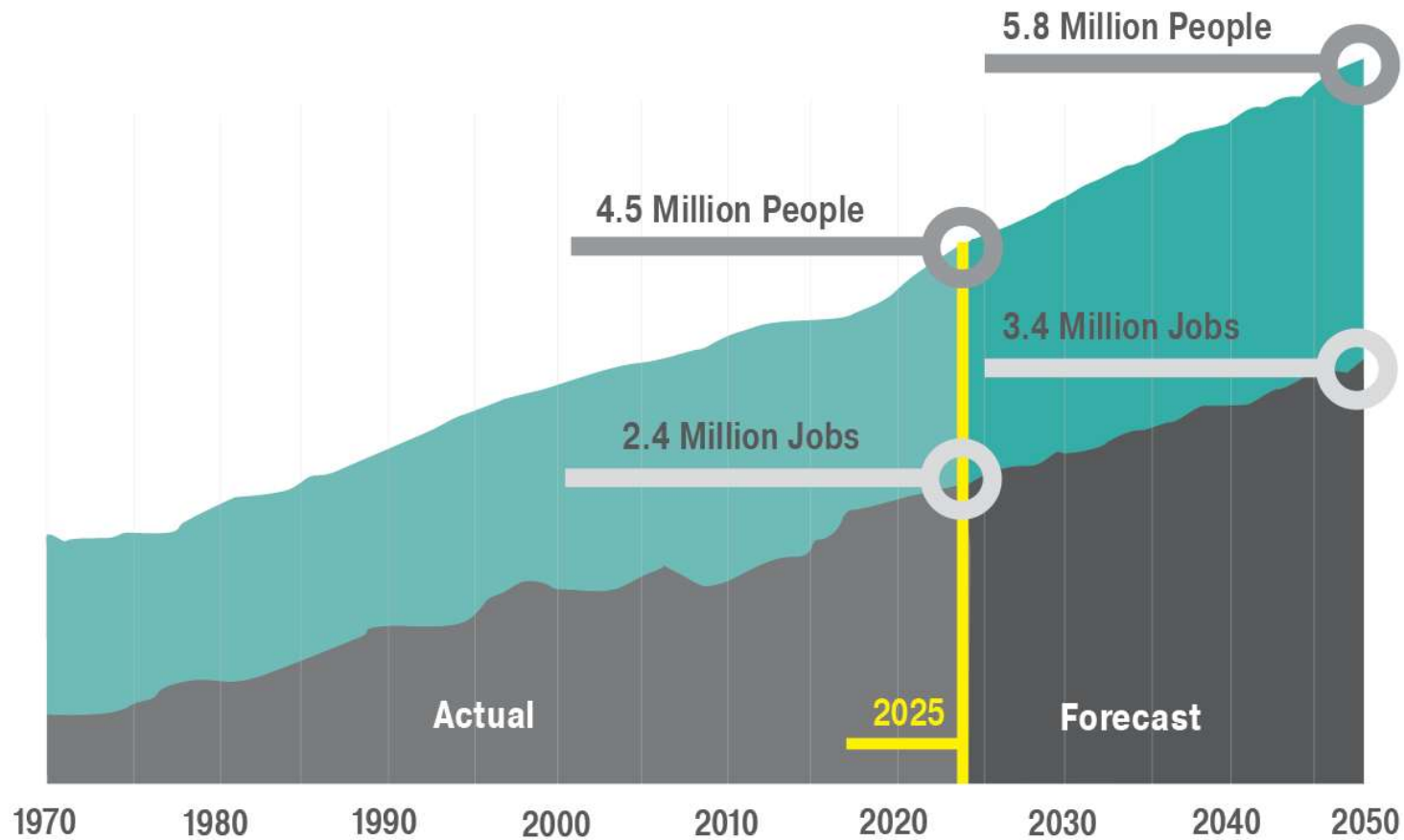
Data Trends

February 27, 2026



Puget Sound Regional Council

Puget Sound Regional Growth Forecast

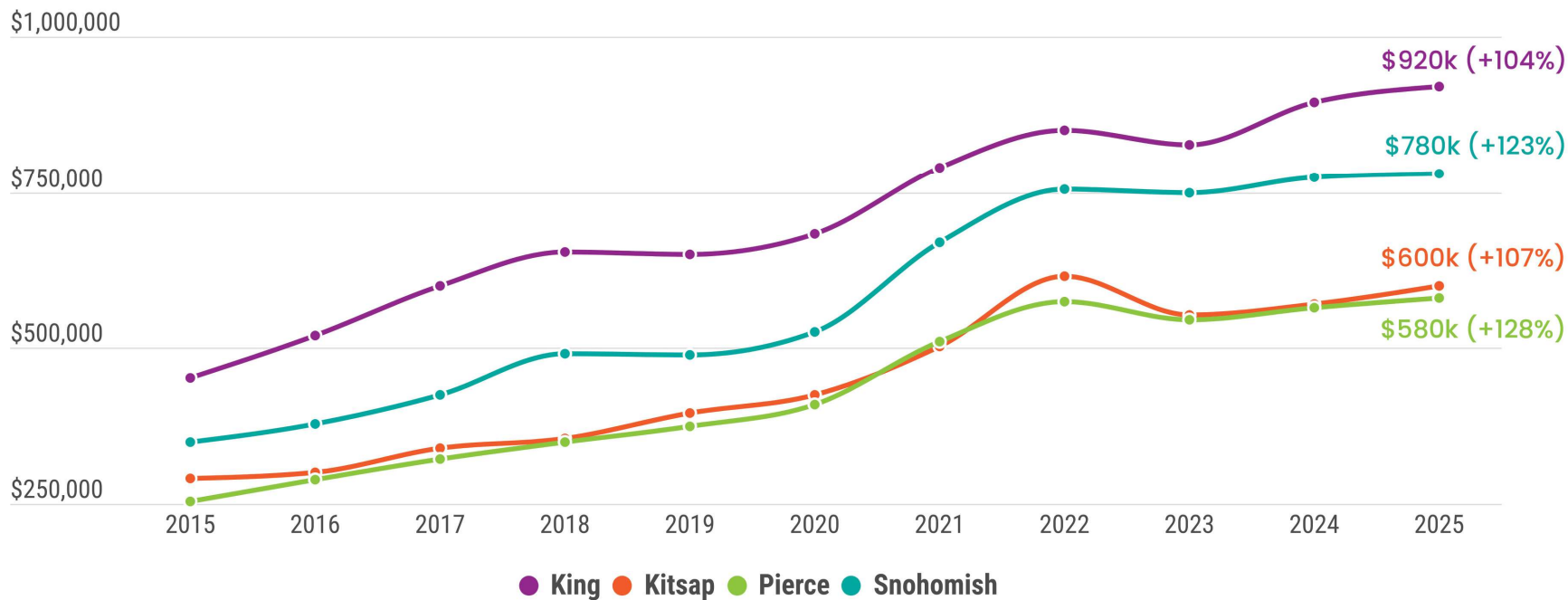


Slide 28

JB1 Please Update to 4.5 Million People and 2.4 Million Jobs and change year to 2025
Josh Brown, 2026-02-18T02:10:47.947

All Counties are adding Housing

Typical home values have increased significantly, with prices highest in King and Snohomish counties.



Source: Redfin, Monthly Housing Market Database

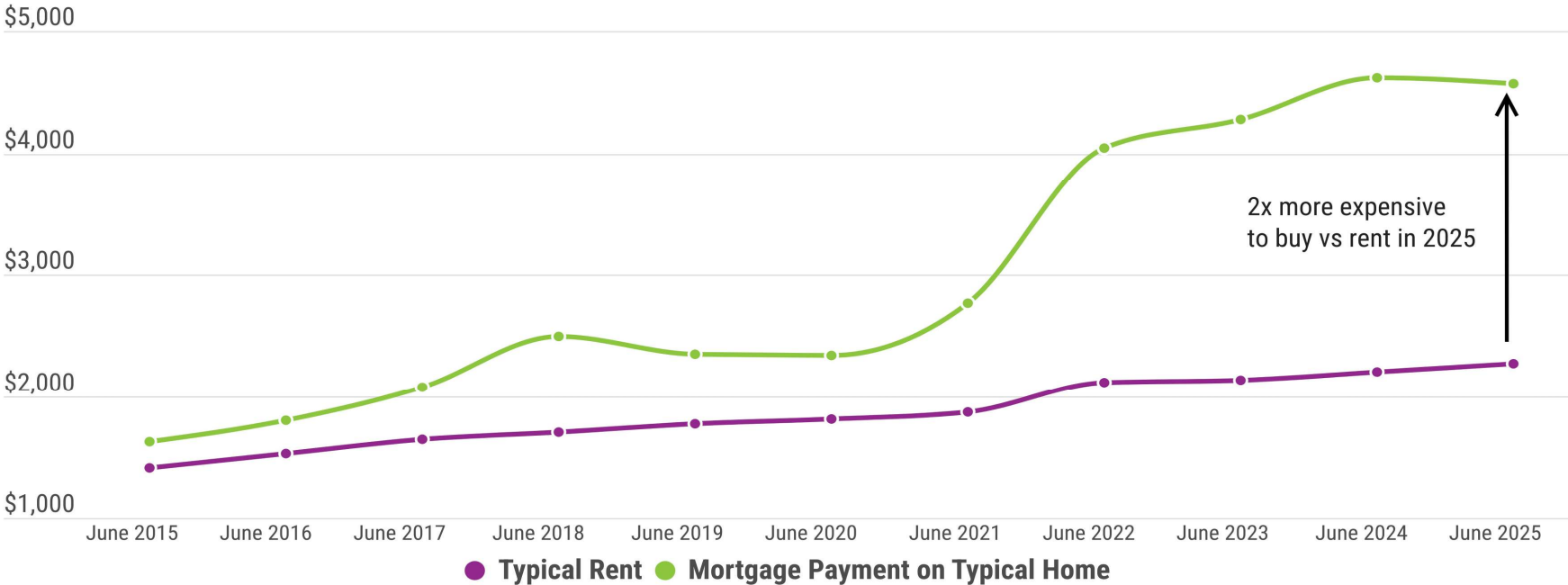
Slide 29

JB1 Let's add the following slides from Eric's presentation:
4, 10, 12, 13, 20-24
<https://www.psrc.org/media/10198>
Josh Brown, 2026-02-18T02:37:07.722



All Counties are adding Housing

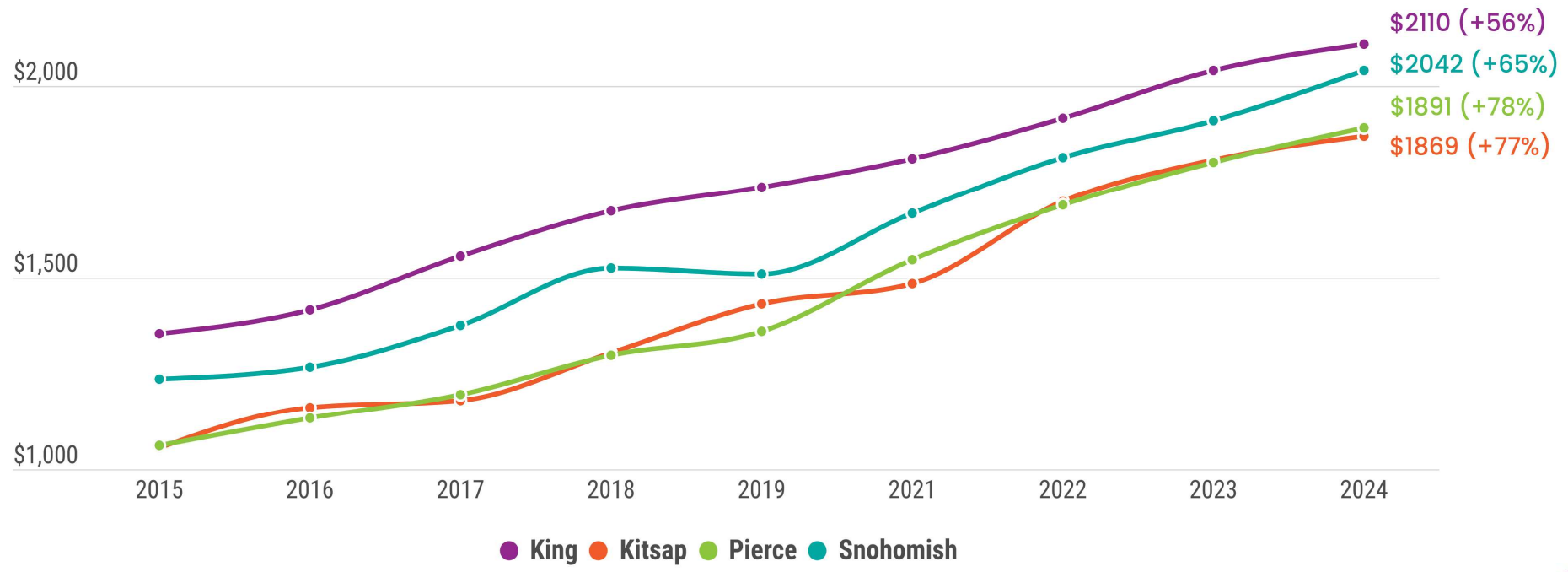
Today, it's 2x more expensive to buy than to rent, placing greater pressure on an already heated rental market.



Source: Zillow, Home Value Index, Observed Rent Index; Freddie Mac, Primary Mortgage Market Survey; calculated by PSRC
 Note: Data are for the Seattle-Tacoma-Bellevue metropolitan statistical area which represents King, Pierce, and Snohomish counties. Assumes a 31% debt-to-income ratio, 30-year fixed rate mortgage, 20% down payment, 1% property tax, and 0.35% property insurance rate.

All Counties are adding Housing

Since 2015, rents have risen significantly, with the largest percentage jump in Kitsap and Pierce counties.

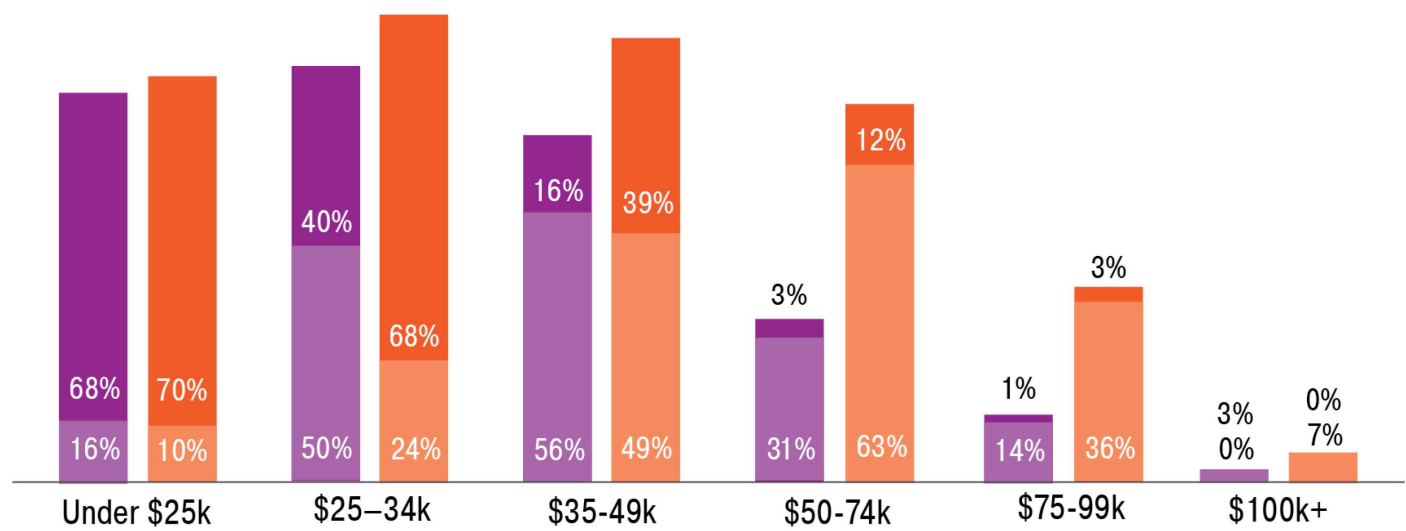


Source: US Census, American Community Survey (ACS) 1 Year Estimates

All Counties are adding Housing

Renter cost burden continues to worsen for low & even moderate-income households.

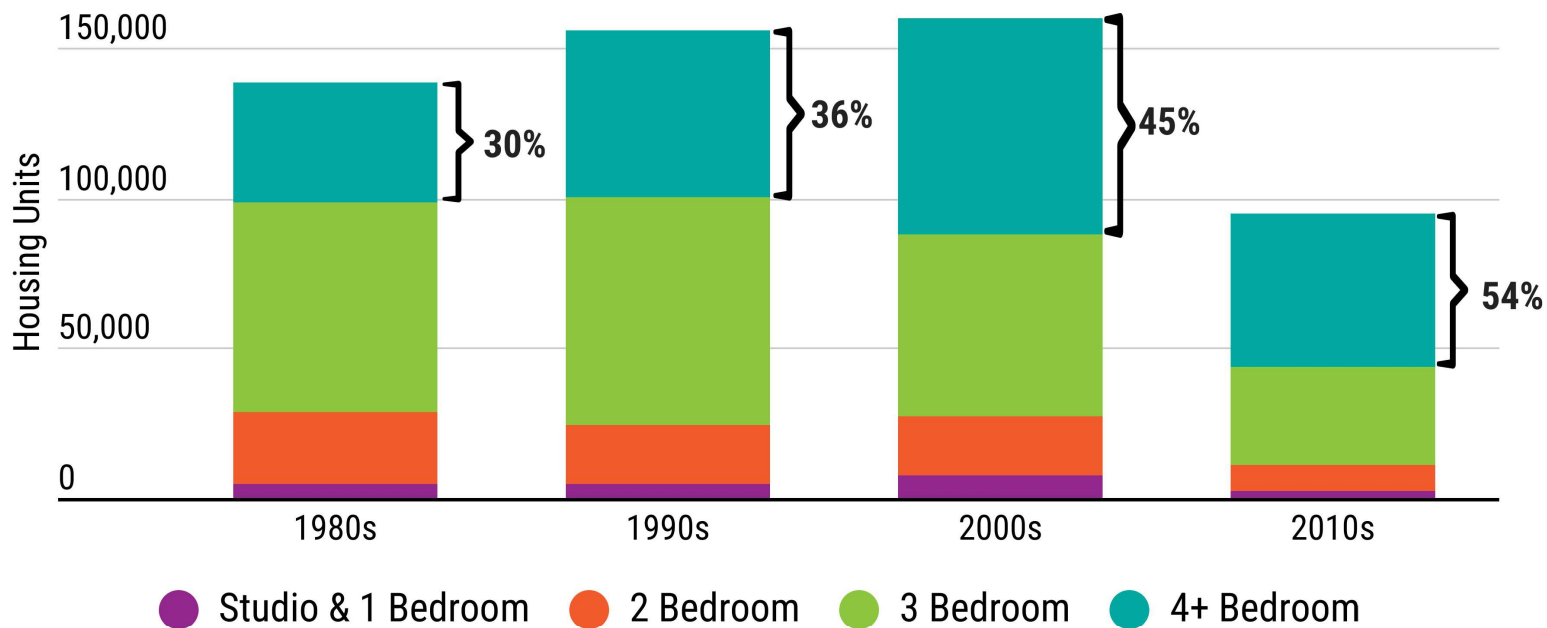
● Cost Burden 2010 ● Severe Cost Burden 2010 ● Cost Burden 2023 ● Severe Cost Burden 2023



Source: U.S. Census Bureau, American Community Survey, 2010 and 2023 5-Year Public Use Microdata Sample

All Counties are adding Housing

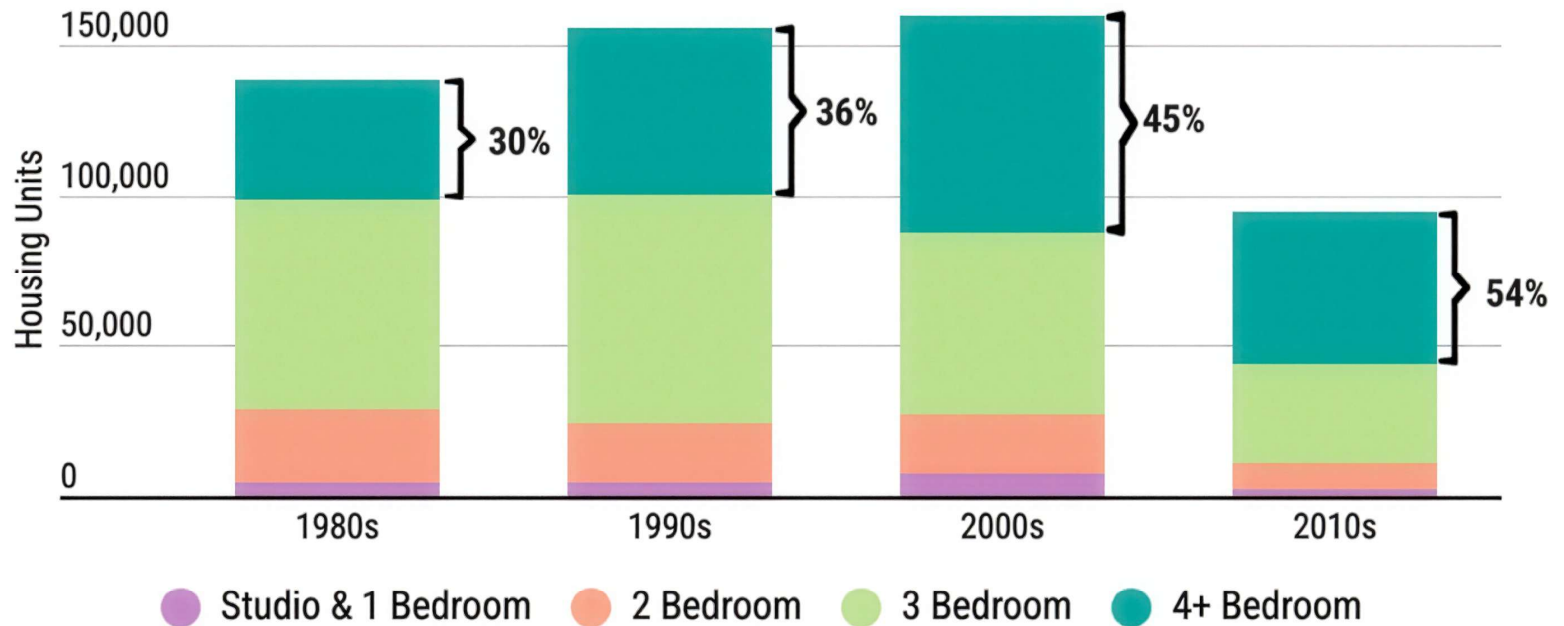
Nearly 80,000 fewer units were built in the 2010's compared to the 2000's. Units that were built are larger (and more expensive).



Source: 2023 American Community Survey (ACS) PUMS, 5-Year Estimates.

All Counties are adding Housing

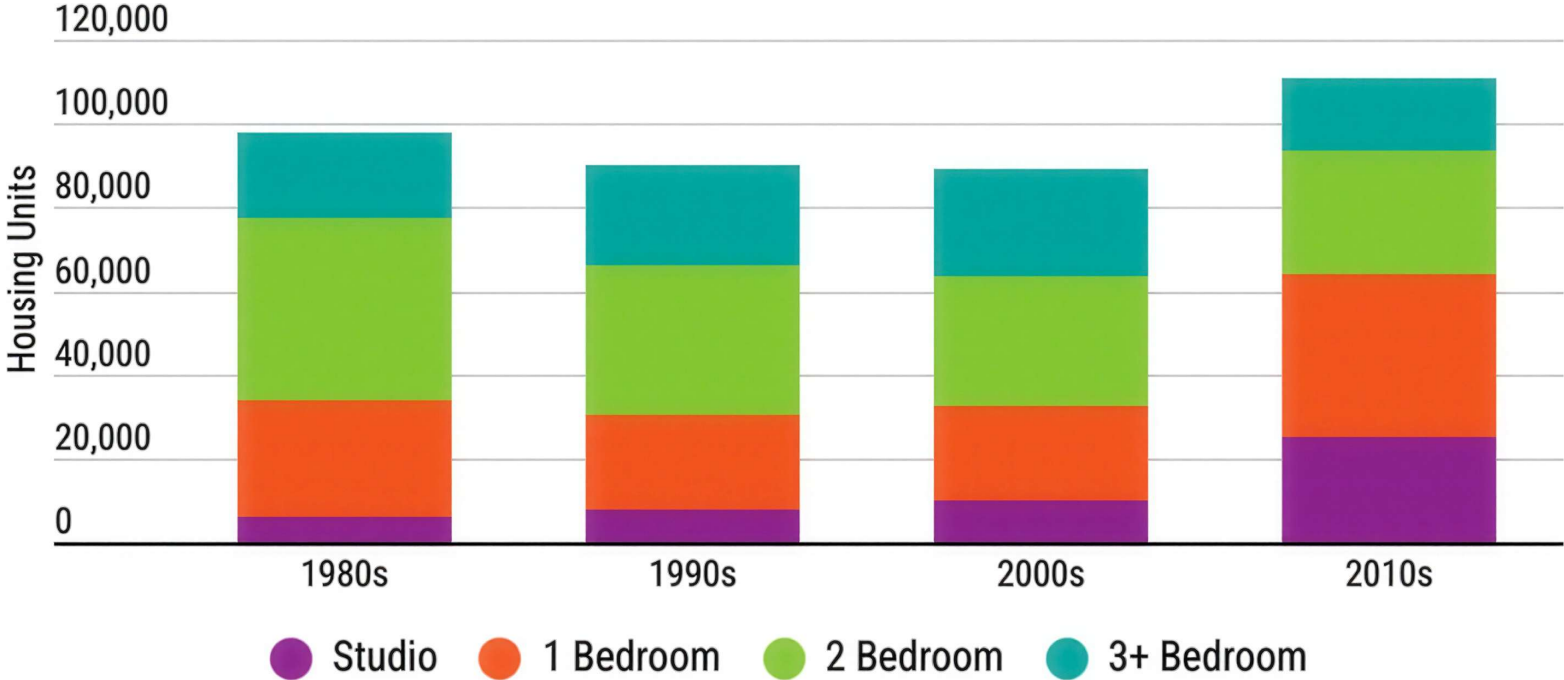
Nearly 80,000 fewer units were built in the 2010's compared to the 2000's. Units that were built are larger (and more expensive).



Source: 2023 American Community Survey (ACS) PUMS, 5-Year Estimates

All Counties are adding Housing

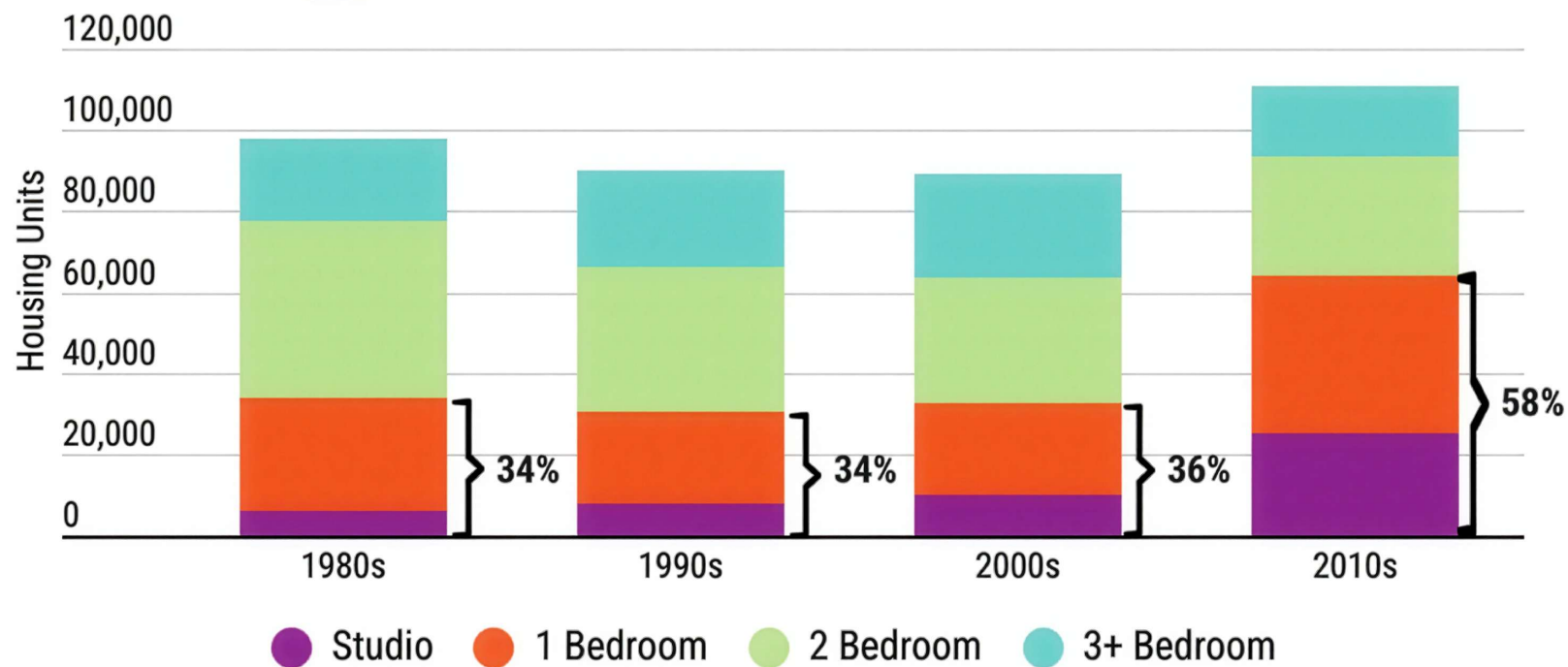
Production of rental units is higher than in previous decades, driven by an increase in studio and one-bedroom units.



Source: 2023 American Community Survey (ACS) PUMS, 5-Year Estimates

All Counties are adding Housing

Production of rental units is higher than in previous decades, driven by an increase in studio and one-bedroom units.

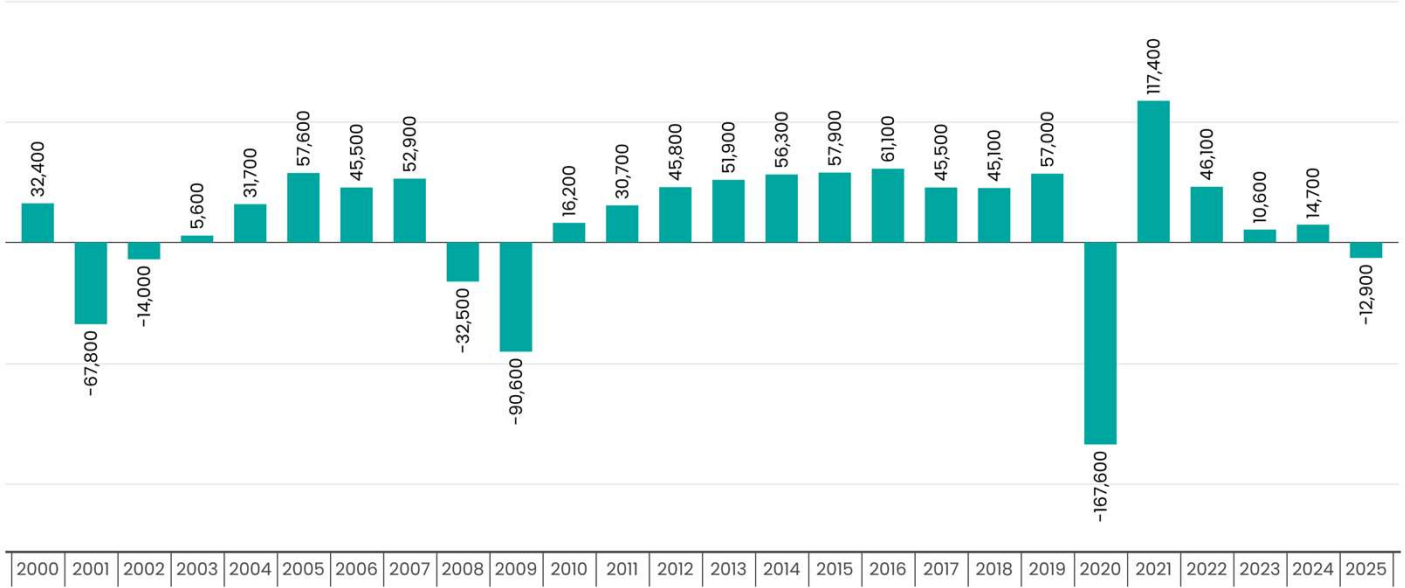


Source: 2023 American Community Survey (ACS) PUMS, 5-Year Estimates

All Counties are adding Housing

The region lost **-22,800** jobs between May of 2024 and May of 2025. These losses include layoffs announced by large tech companies as well as impacts of economic uncertainty.

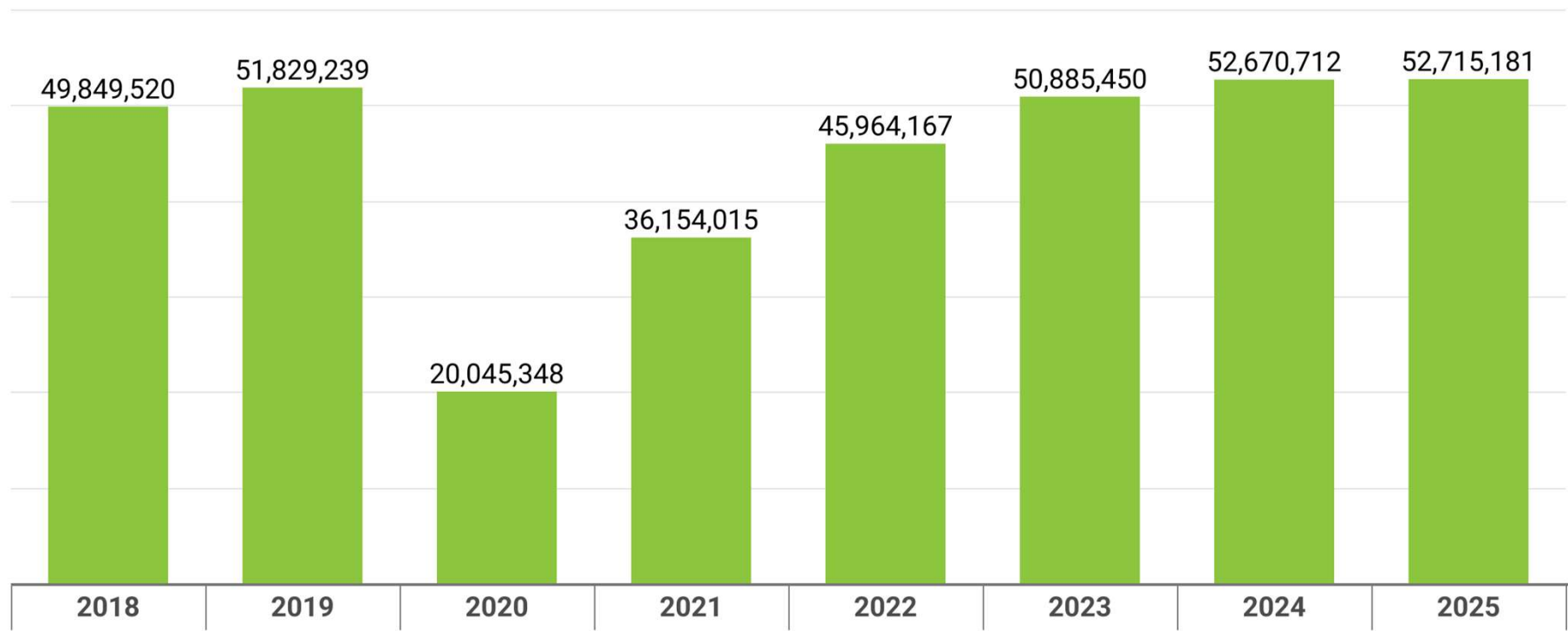
Job Change: Year Over Year



Source: Washington State Employment Security Department

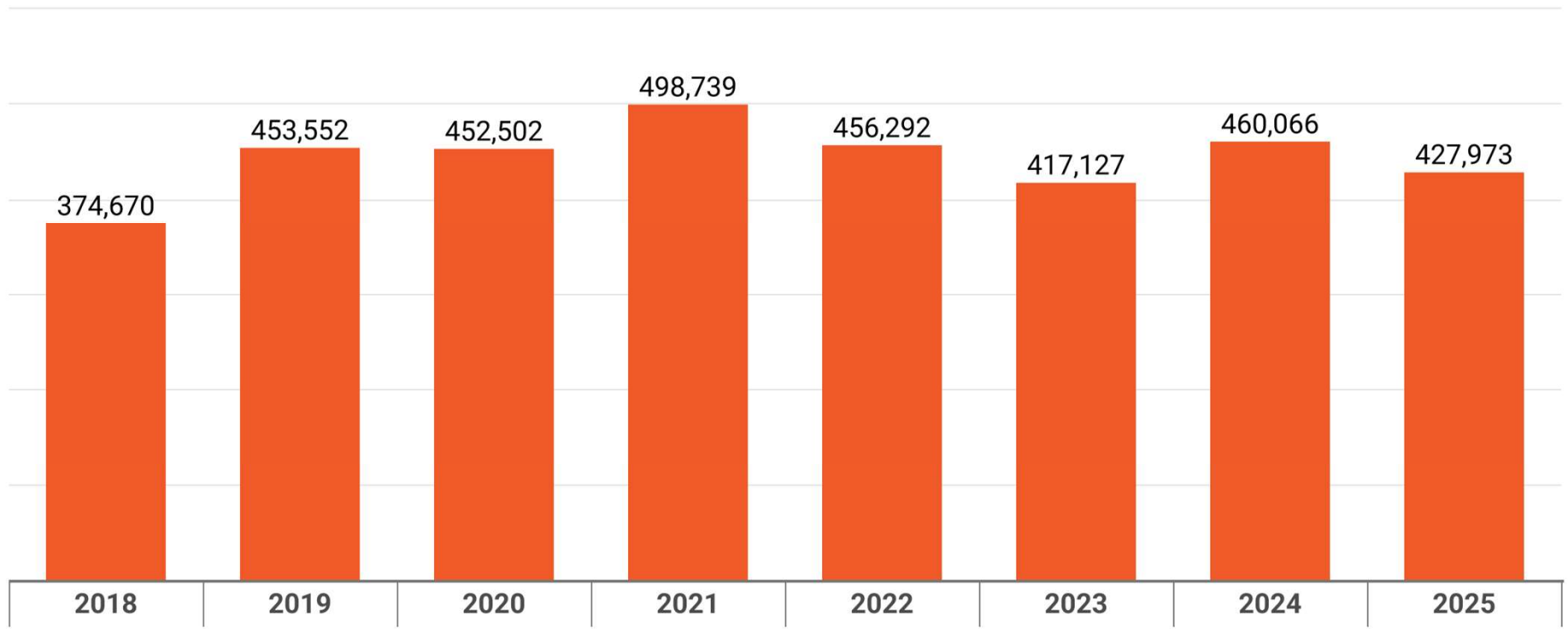


SeaTac Year End Passenger Total





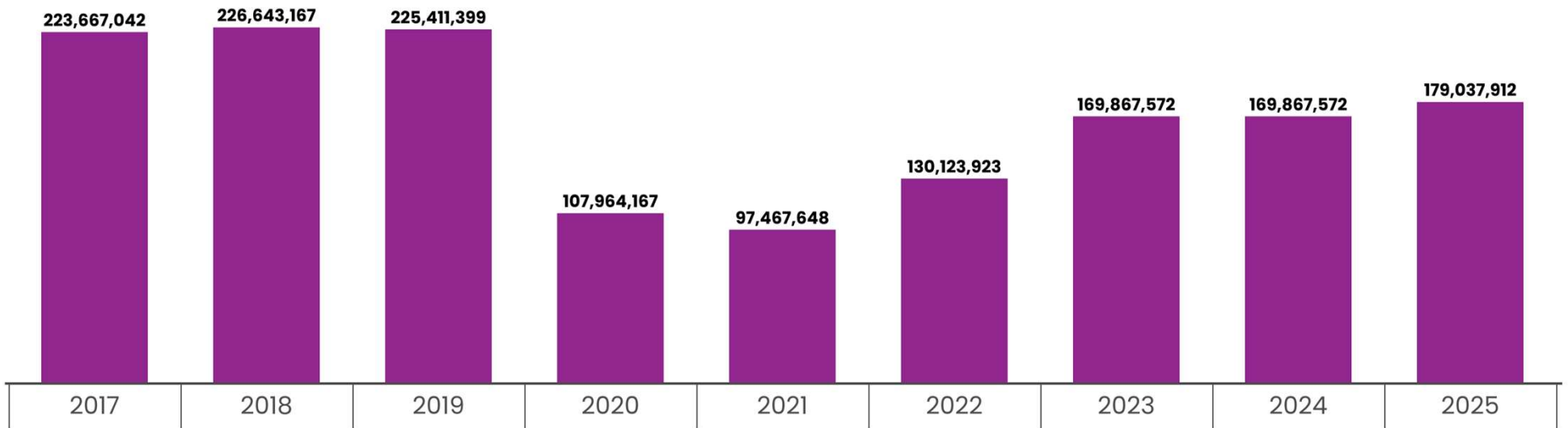
SeaTac Year End Cargo Total





NTD Boardings Data 2017 – 2025

JB1



Slide 40

JB1

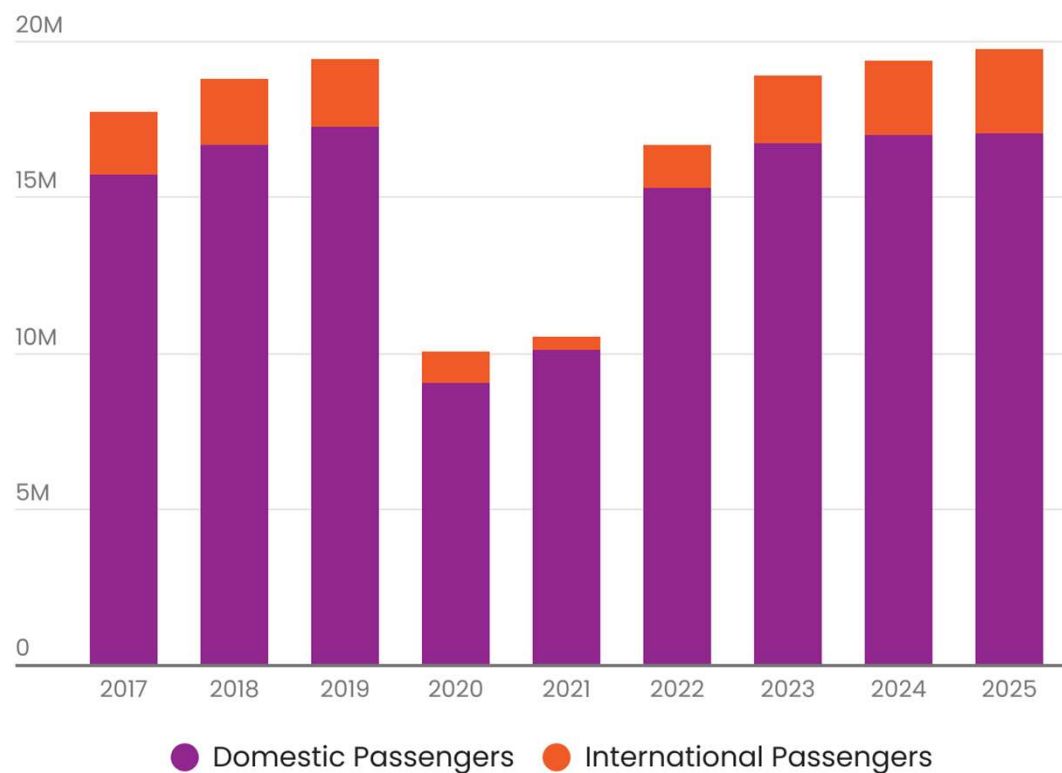
Lets turn this into two slides based off of our Jobs trend

<https://www.psrc.org/about-us/media-hub/economic-update-region-loses-12900-jobs-2025>

Josh Brown, 2026-02-18T02:14:20.970

SEA Passenger volumes above 2019 levels

Jan-May SEA Passengers by Type, 2017-2025



Through May of 2025, more than **19.7 million** passengers passed through SEA

52.6 million passengers passed through SEA in 2024, the most in a single year

Source: SEA Airport Statistics | Port of Seattle (portseattle.org)



Slide 41

JB1

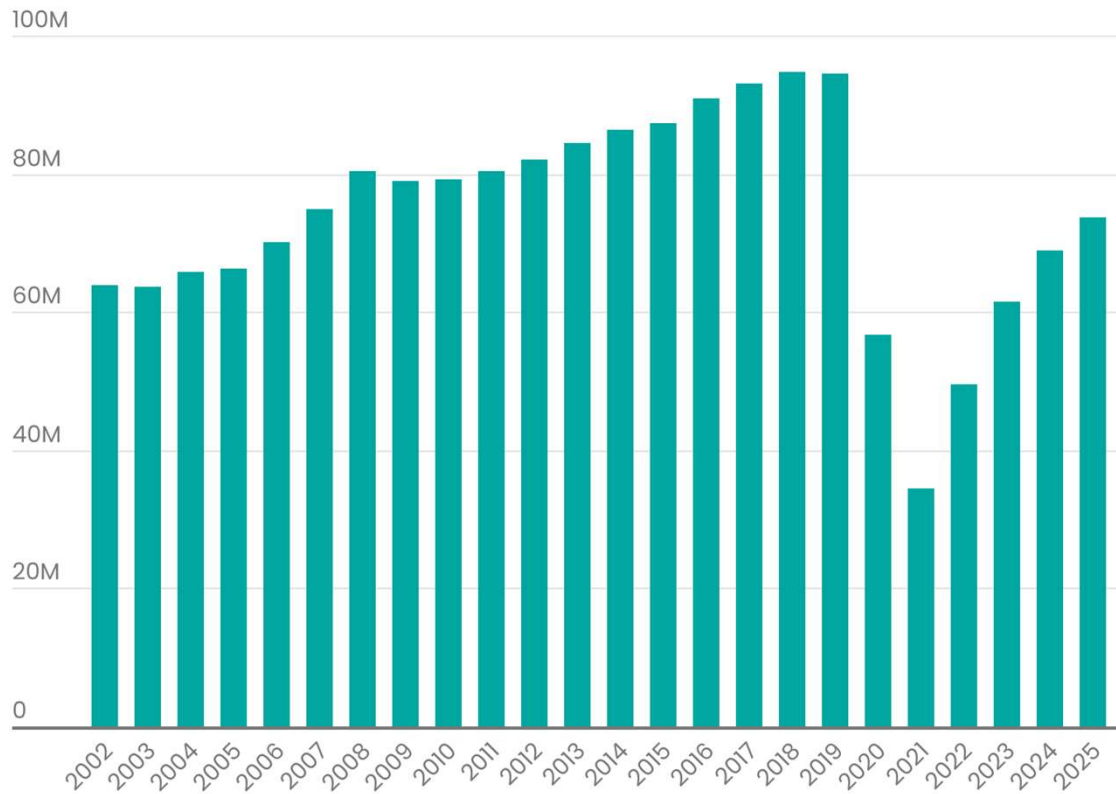
<https://www.portseattle.org/page/airport-statistics>. Please update with December Year End Data.

Josh Brown, 2026-02-18T02:25:21.019



Transit Ridership continues to recover

Jan-May Total Boardings, 2002-2025



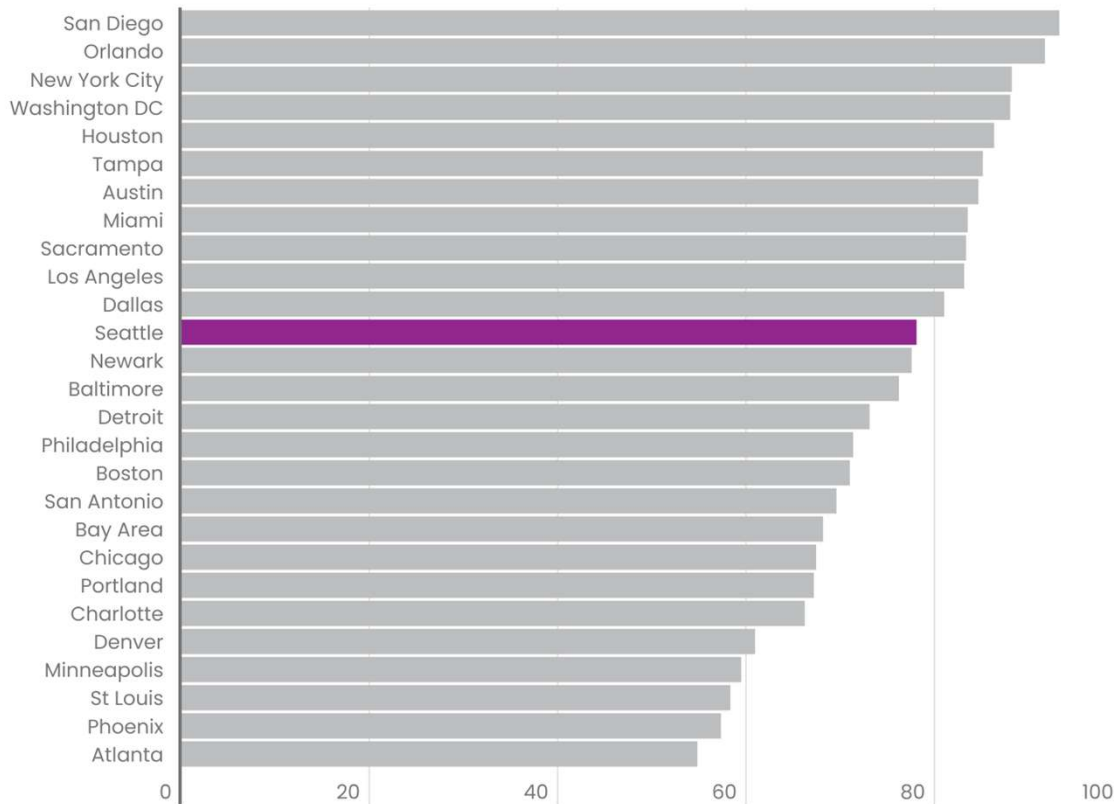
There were approximately **74 million** boardings from January to May 2025 on the Region's transit system (**78%** of 2019 ridership)

Source: USDOT Federal Transit Administration National Transit Database



Recovery is Like Other Metro Areas

Ratio of Jan-May Boardings: 2025 / 2019



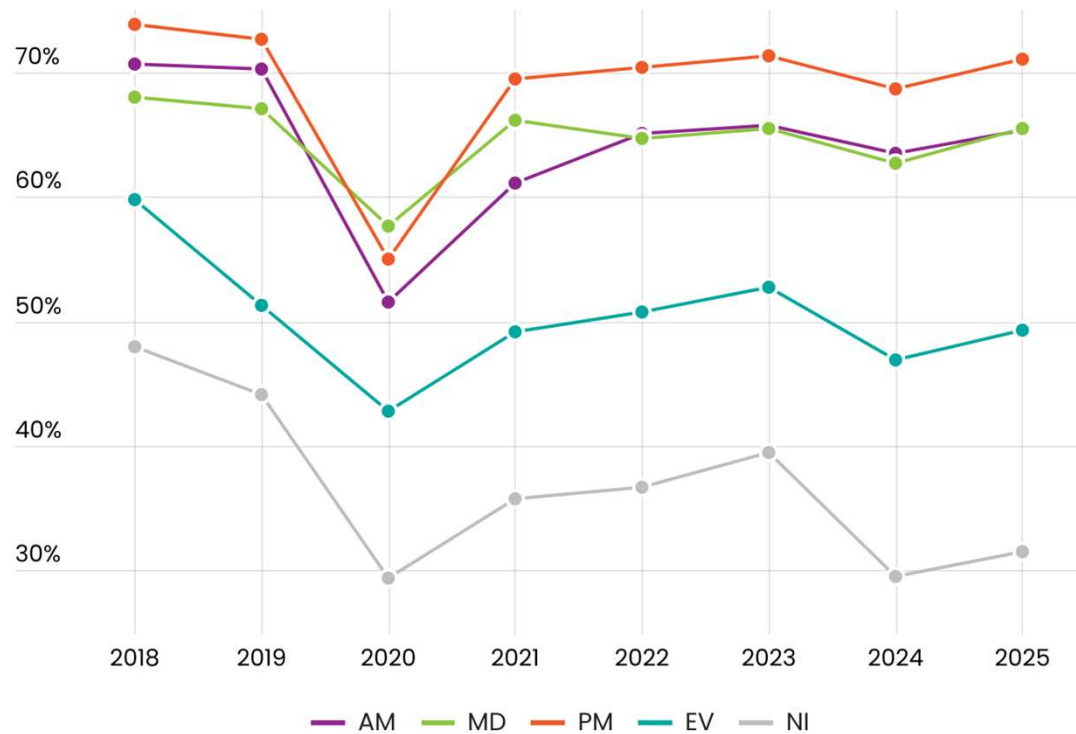
Source: USDOT Federal Transit Administration National Transit Database





Congestion rising – Still Lower Than 2019

% Heavy & Severe Congestion, APR 2018–2025

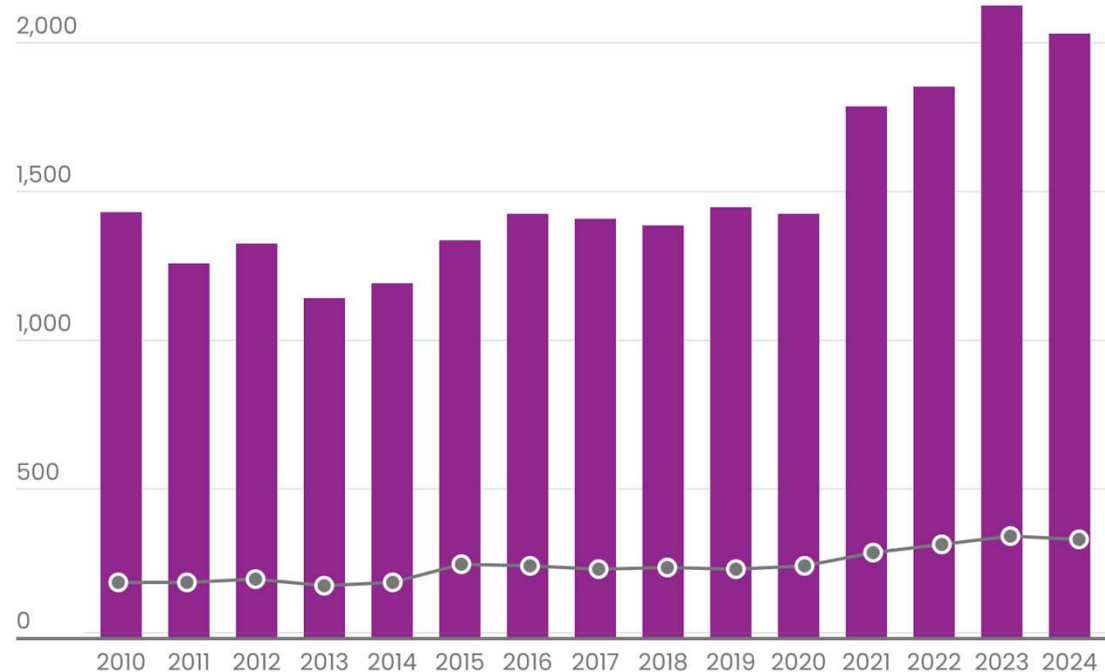


AM Peak congestion remains below pre-covid levels. No time periods have more miles of congestion than 2019 but PM Peak is close.

Source: National Performance Measurement Research Dataset (NPMRDS)

Traffic Related Deaths At Historic Levels

Traffic Deaths & Serious Injuries 2010-2024



335 people died on the region's roadways in 2024 and **1693** people were seriously injured.

Source: Washington State Department of Transportation

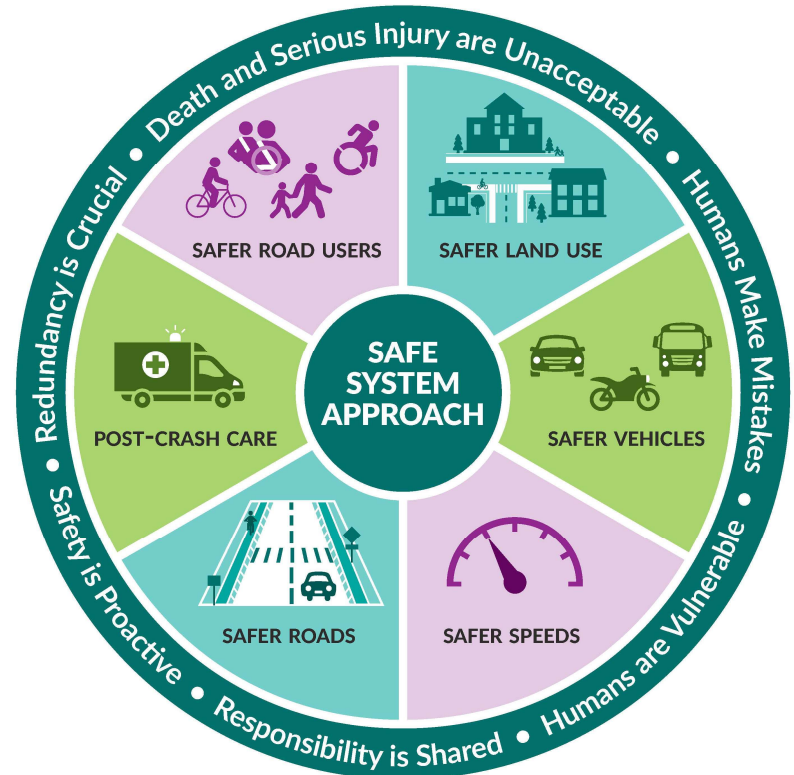


Slide 45

JB1 Please add 2025 data. Get from Gary Simonson.
Josh Brown, 2026-02-18T02:11:27.848

Regional Safety Action Plan

- Adopted in May 2025
- 25 jurisdictions also developed local safety action plans
- Updated PSRC funding criteria & language to more concretely tie to the Safe System Approach and FHWA proven safety countermeasures
- Incorporated a local commitment to develop a safety plan/policies based on a Safe System Approach in funding criteria



USDOT, <https://www.transportation.gov/NRSS/SafeSystem>

An aerial photograph of Seattle, Washington, showing the city skyline with numerous skyscrapers, the waterfront, and the Space Needle. The image is used as a background for a thank-you message.

Thank You!

Josh Brown

Executive Director
jbrown@psrc.org



Puget Sound Regional Council