

# Regional Open Space Conservation Plan Update

Regional Staff Committee

March 5, 2026



Puget Sound Regional Council

# VISION 2050 Supports Open Space

**MPP-En-12:** Conserve and enhance open space and update the Regional Open Space Conservation Plan

**MPP-En-15:** Provide walkable access to parks and trails and prioritize historically underserved communities

**MPP-En-9:** Enhance urban tree canopy to support community, environmental and economic health

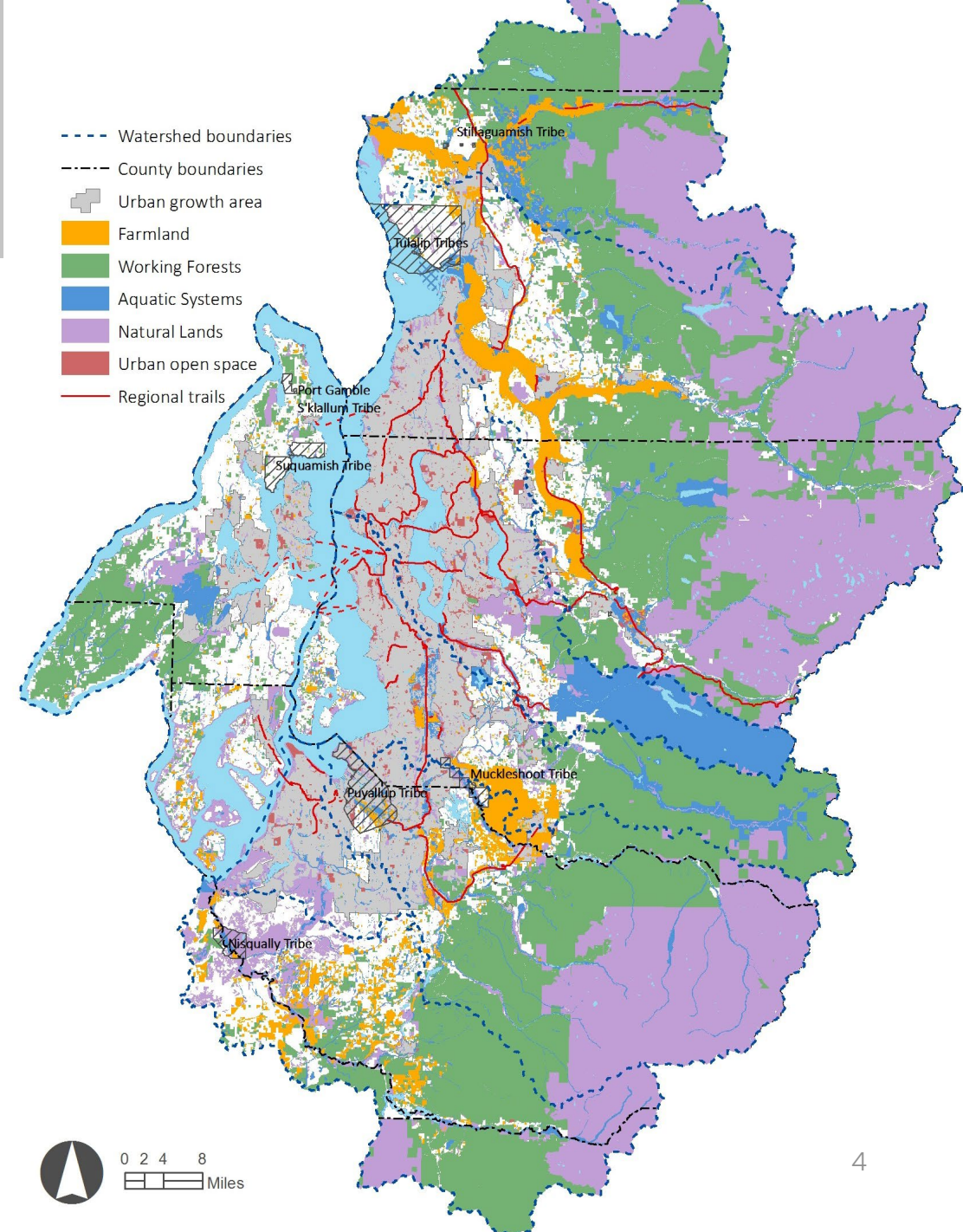


# Regional Open Space Network

## 6 categories of open space:

- Farmland
- Working forests
- Aquatic systems
- Natural lands
- Urban open space
- Regional trails

## [Regional Open Space Conservation Plan](#)

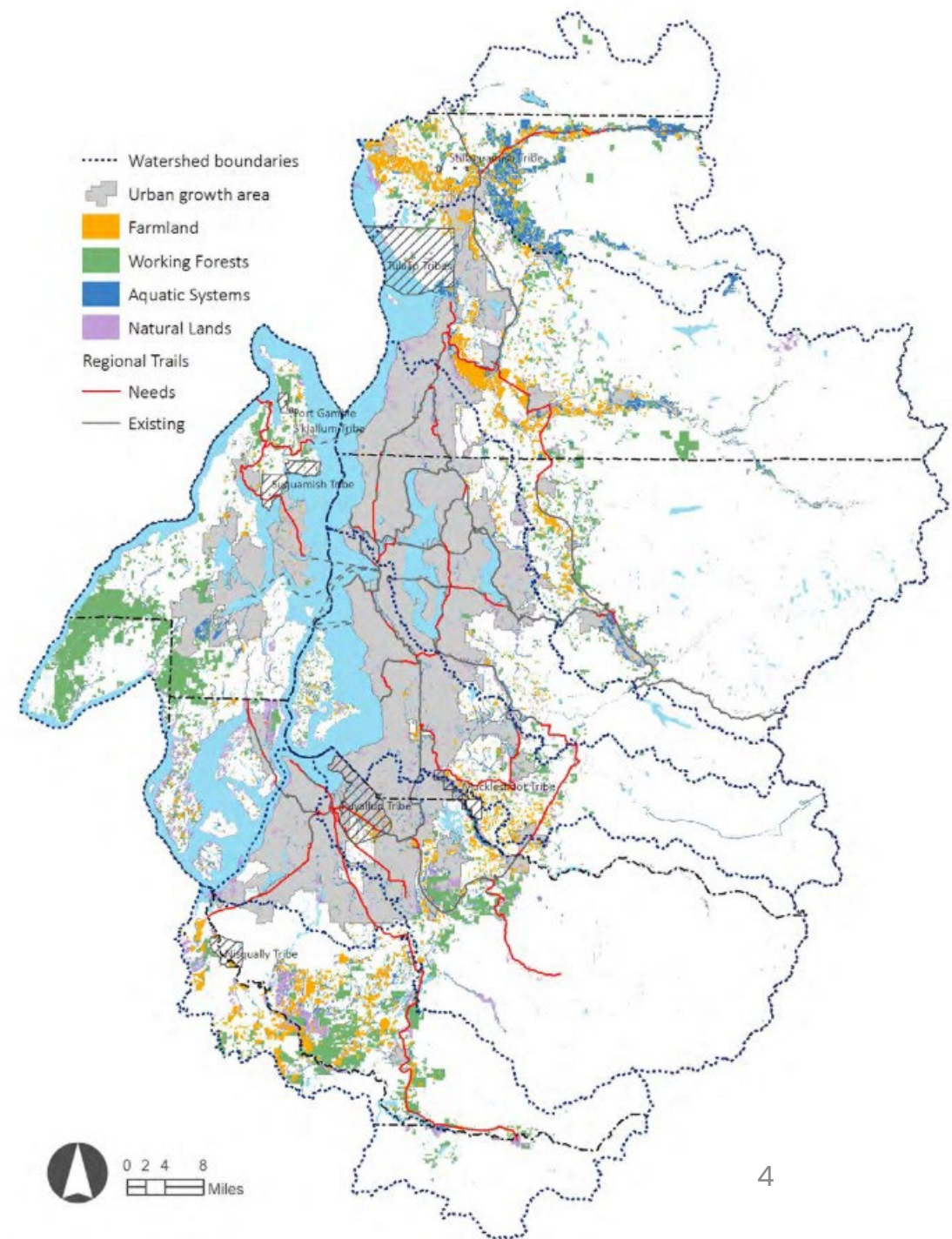


# Conservation Needs

## Conservation Needs in the Regional Open Space Network:

- Farmland: 104,000 acres
- Working Forests: 183,200 acres
- Aquatic Systems: 93,700 acres
- Natural Lands: 81,700 acres
- Regional Trails: 300 miles
- Highest priority urban open spaces: 47 parks

**Short term goal:** 80,000 more acres of open space in long-term protection by 2025

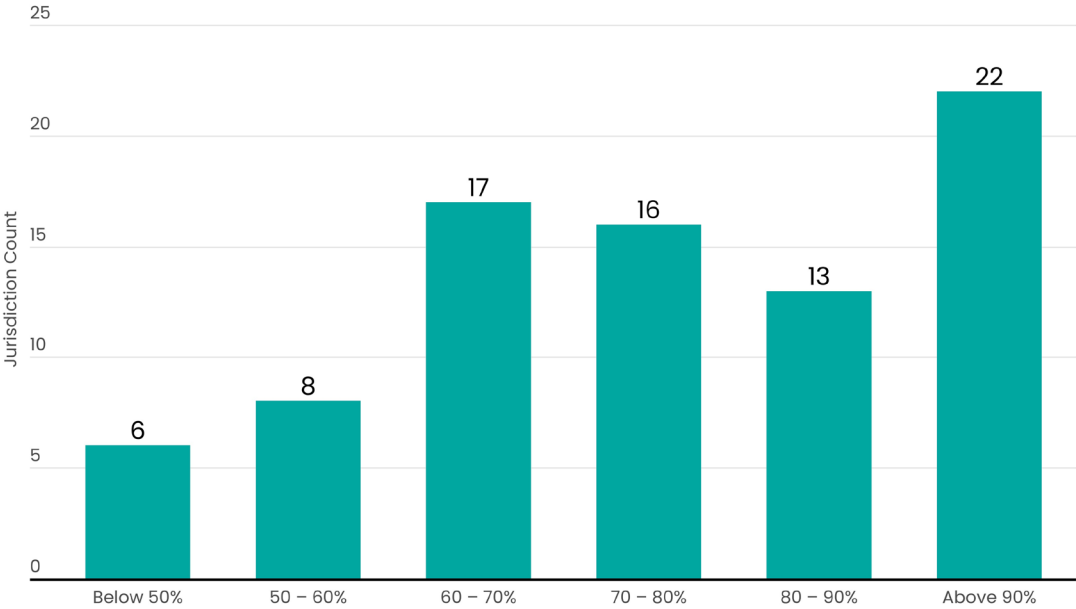


# Urban Open Space

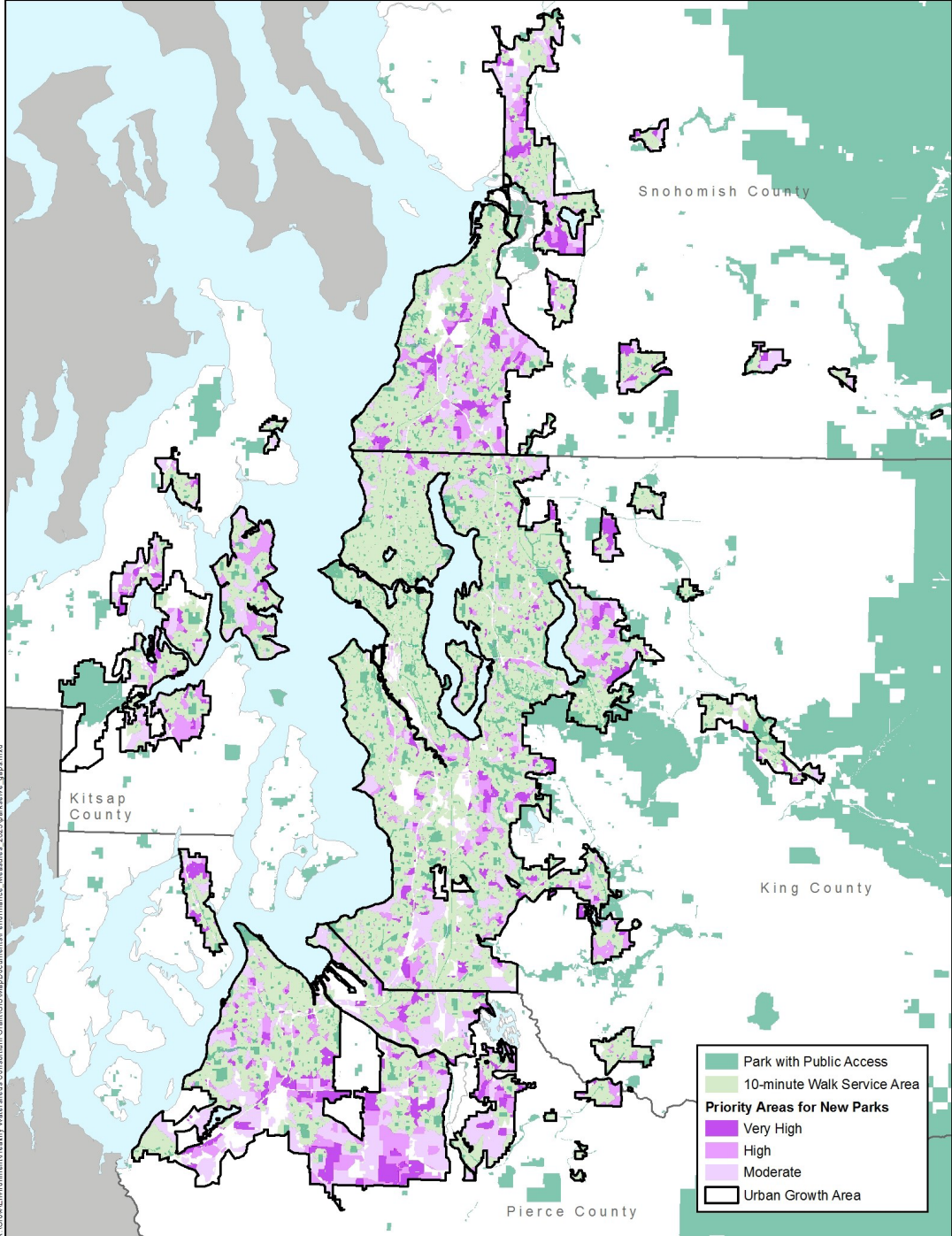
**Goal:** By 2050, all urban residents within a 10-minute walk of a park.

**ParkServe:** urban population within a 10-minute walk of a park: 72%

Cities by Percentage of Population Within a 10-Minute Walk of a Park



Data source: ParkServe, Trust for Public Land

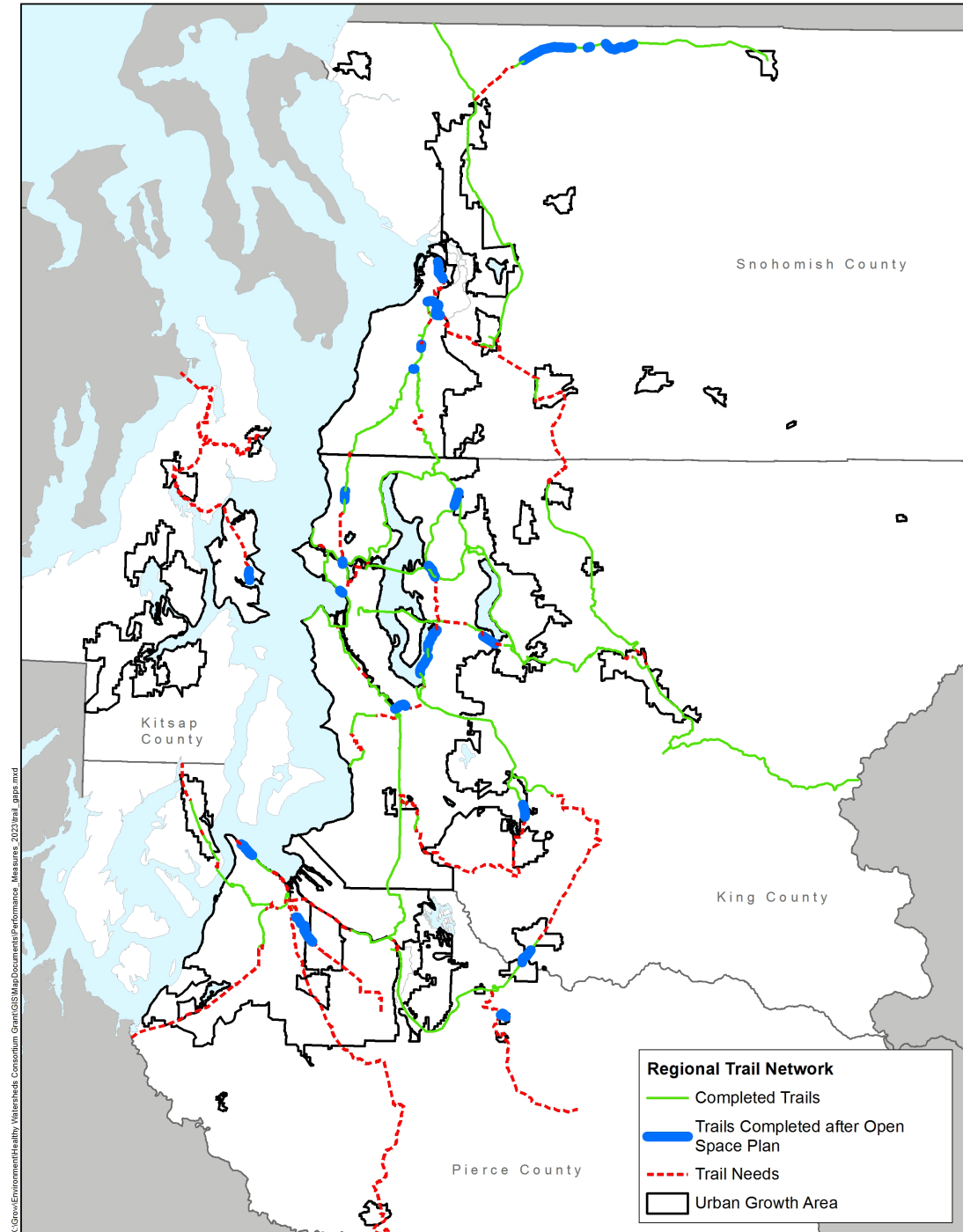


# Regional Trails

**Goal:** By 2050, add 300 miles to the regional trail network

Since 2018, 30 miles added to the regional trail network. Examples:

- Mountains to Sound Greenway Trail in King County
- Sound to Olympics Trail in Kitsap County
- Pipeline Trail in Pierce County
- White Horse Trail in Snohomish County

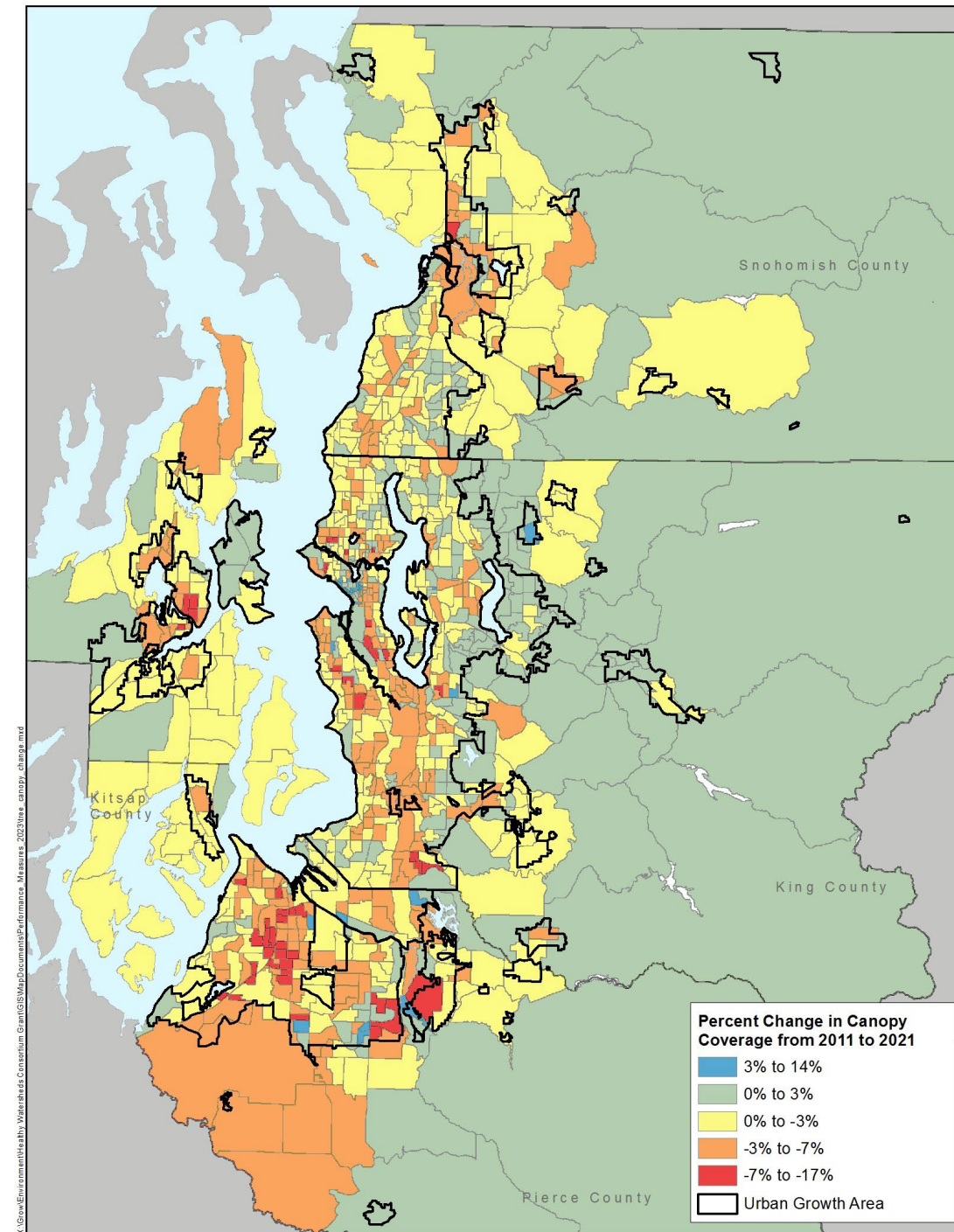


# Tree Canopy Cover

**Goal:** By 2050, tree canopy cover in region remains at 2018 levels. By 2050, it will increase in the regional open space network.

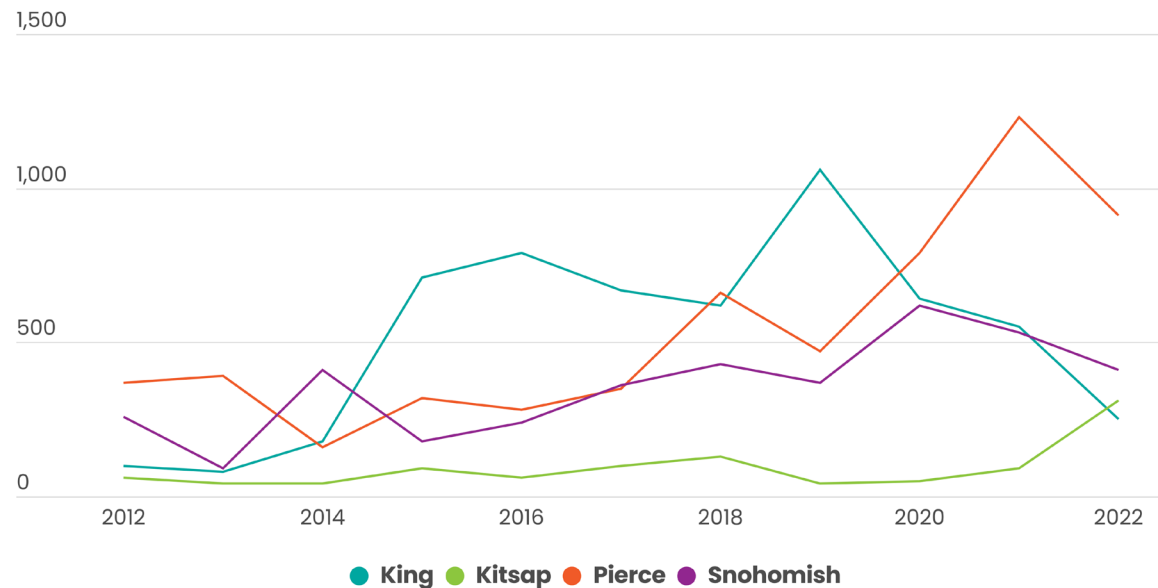
Tree canopy cover change 2011–2021:

- Region: no change
- Urban: decrease of 3%
- Regional open space network: no change



# New Housing Units in the Open Space Network

**Net new housing units on farmland, working forests, aquatic systems, and natural Lands:** 16,460 added on lands in the regional open space network (2012–2022). 81% in urban growth areas.



Data source: County Assessment Data, Snohomish County PUD, PSRC



# Urban Growth

## 2012–2022 housing development in urban growth areas:

- Region: 95%
- King: 99%
- Kitsap: 73%
- Pierce: 88%
- Snohomish: 92%



# Engagement



## Key partners in plan development:

- PSRC boards and committees
- County staff
- Advisory committee
- Tribes
- Environmental Resource Agency Coordination Group
- Local Integrating Organizations
- Countywide planning groups
- Land conservancies



# Proposed Advisory Committee

City of Everett

Emerald Alliance

Forterra

King, Kitsap,  
Pierce and  
Snohomish  
counties

Leafline Trails  
Coalition

National Parks  
Service

Suquamish Tribe

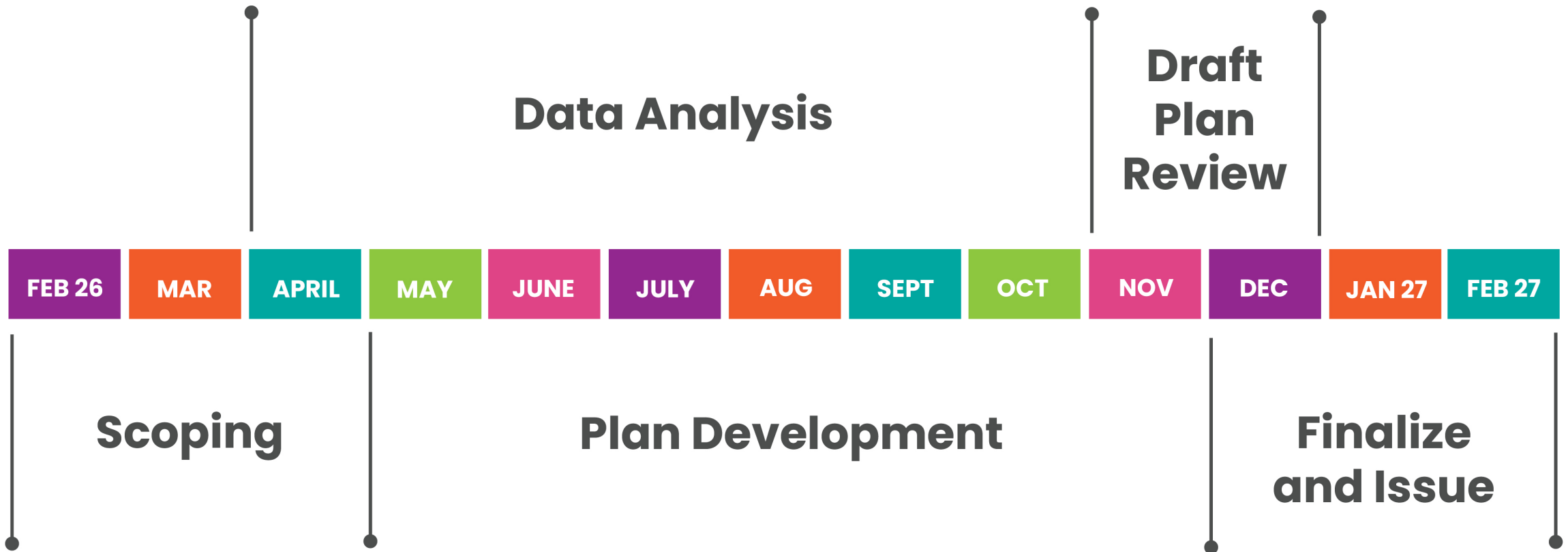
Trust for Public  
Land

WA Dept of  
Natural Resources

Washington  
Farmland Trust



# Open Space Plan Update Schedule



# March 20 TOOLBOX Webinar



## TOOLBOX SERIES

**Greener for All:  
Reimagining Access  
to Parks**



**Date: March 20, 2026**  
**Time: 10:00 – 11:30 AM**  
**Format: Zoom**

Speakers from:

- City of Renton
- City of Tacoma
- Trust for Public Land

Webinar [registration](#)

AICP Credit



# Discussion Questions



- What are the biggest challenges in conservation and enhancement of open space, parks and trails?
- What information should PSRC consider for the Regional Open Space Conservation Plan update?
- Do you have a suggestion for a city or other representative to sit on the advisory committee?
- What community engagement strategies should be considered for the open space plan update?



# Thank You!

**Erika Harris, AICP**

Senior Planner, [eharris@psrc.org](mailto:eharris@psrc.org)

**Drew Hanson**

Senior Planner/GIS Analyst, [dhanson@psrc.org](mailto:dhanson@psrc.org)



Puget Sound Regional Council