

Regional Transportation Plan

Regional TOD Committee

March 20, 2026



Puget Sound Regional Council

Today's Discussion

- Progress to-date on Regional Transportation Plan development
- Continuing work on regional transit access assessment
- Next steps/Key milestones



Overall Comments Received



PSRC received comments through our online engagement hub and direct emails.

- 18 official letters
- 36 Engagement Hub submissions
- 7 direct emails from members of the public
- 332 unique comments



Official Letters

Organizations that sent official comment letters on PSRC's Draft Plan	
All Aboard Washington	Port of Seattle
City of Bellevue	Port of Tacoma
City of Tukwila	Puget Sound Clean Air Agency
Climate Rail Alliance	County Public Health Departments
Joint Transportation Initiative	Seattle Department of Transportation
King County	Smarter Transit
Lid I-5	Snohomish County
Move Redmond	Transportation Choices Coalition
Northwest Seaport Alliance	Washington Physicians for Social Responsibility
Pierce Transit	WSDOT



Categorization

<https://www.psrc.org/planning-2050/regional-projects/2026-rtp/what-we-heard>

- All comments have been reviewed and classified as:
 - No Action Taken
 - Technical Correction
 - Requires Board Input
- Comprehensive spreadsheet including classifications and PSRC staff response posted to the RTP Engagement Hub

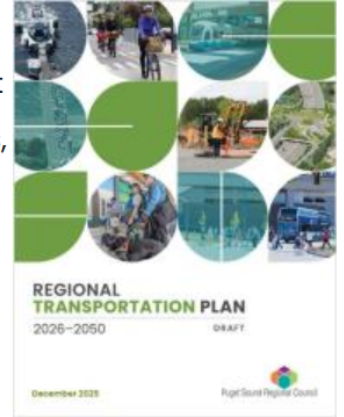
We've heard from you!

Throughout 2025, PSRC staff conducted detailed analyses of our current and future transportation network and collected feedback at board and committee meetings, community meetings, open houses, focus groups, interviews, public surveys, and direct outreach.

A draft Regional Transportation Plan (RTP) was developed and published for a public comment period that extended from December 15, 2025, through February 2, 2026.

You can review what we heard, along with PSRC responses, in a comment summary table that breaks out individual comments by type:

[View the Comment Summary Table \[PDF/2.9MB\]](#)



Comment Themes

- Active Transportation – 11
- Climate and Environment – 26
- Funding – 26
- General / Other – 130
- Roads and Maintenance – 33
- Safety – 29
- Technology – 5
- Transit – 72



Board Input

15 comments flagged for Board Input

3 themes:

- Rural transportation issues
- Ongoing performance measurement and monitoring
- Transportation technologies

Staff proposal = Future PSRC work program on each



Regional Transportation Plan (2022) calls for PSRC to:

“...Develop and update tools and resources to **help identify where access to transit can be improved**, particularly for bicyclists and pedestrians. ”

Transit access in RTP:

- Transit-Oriented Development (TOD)
- Walk, Bike, and Roll
- Transit Service
- Drop-off/Pick-up Modes
- Parking



Transit Access Checklist

- The Checklist provides a framework for conducting a **comprehensive assessment of existing transit access conditions** at any given location.
- It also includes relevant data sources and transit agency and PSRC contacts.



Transit Access Toolkit

- The Toolkit identifies **various tools for improving transit access and organizes them** across eight strategic areas.
- The Toolkit was designed to help stakeholders understand how each strategic area increases transit access and the roles played by various stakeholders.



2023 Transit Access Assessment Recommendations

- **Automate and streamline the tools** to help local agencies more easily assess transit access needs and opportunities.
- Develop clear and comprehensive information on the **roles and responsibilities** of agencies.
- **Integrate new emerging themes**, including safety, equitable engagement, and new technologies to transit access tools.
- Develop guidance on **equitable engagement and outreach** for transit access.

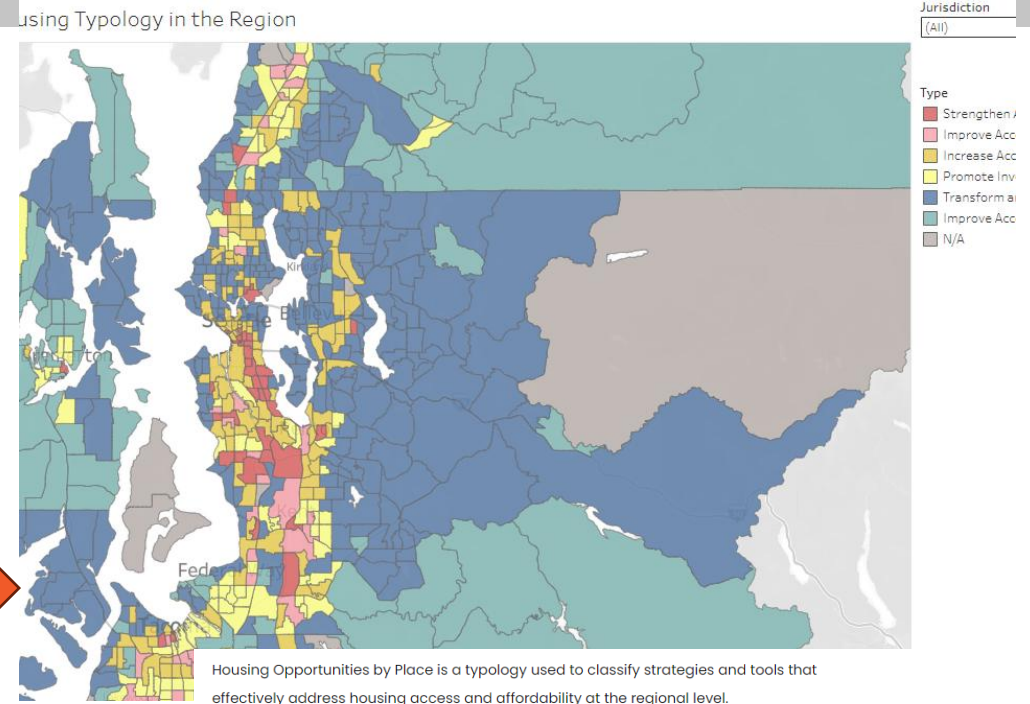


Models for Tools to Assist PSRC Member

- Housing Opportunities by Place (HOP)
- Regional Safety Action Plan

How we intend to apply:

- Online mapping visualization – typologies
 - Replaces current checklist
- Link to strategies to address needs
 - Replaces current toolkit



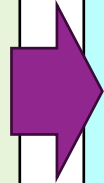
Explore Tools by Type



Development of a Regional Transit Access Assessment Methodology

Context by Place

- Regional Growth Centers
- Manufacturing/Industrial Centers
- HCT station areas
- Countywide Centers
- Other Urban Areas
- Rural Areas



Transit Access Needs

- Transit-supportive Density thresholds
- Motorized Access
 - Transit
 - Pick-up/drop-off
 - Parking
- How-to improve access in station/stop areas
 - Safety for walk/bike
 - Walk/bike
 - Route Directness



Transit Access Strategies

- Organized/ designed to address both:
 - Contextual elements in different geographies
 - Technical transit access needs
- Will also cross-reference to guidance on:
 - Roles and responsibilities
 - Community engagement



Discussion and Next Steps

- Markup versions of Draft RTP reflecting changes will be posted prior to April board meetings
- Board will discuss and act on plan refinements in April
- Final plan revisions will be made prior to adoption at General Assembly in May 2026
- Continued staff work to develop working draft transit access tool concurrent with RTP work
- Questions or Feedback?





Thank You!

Gil Cerise

Program Manager

gcerise@psrc.org



Puget Sound Regional Council