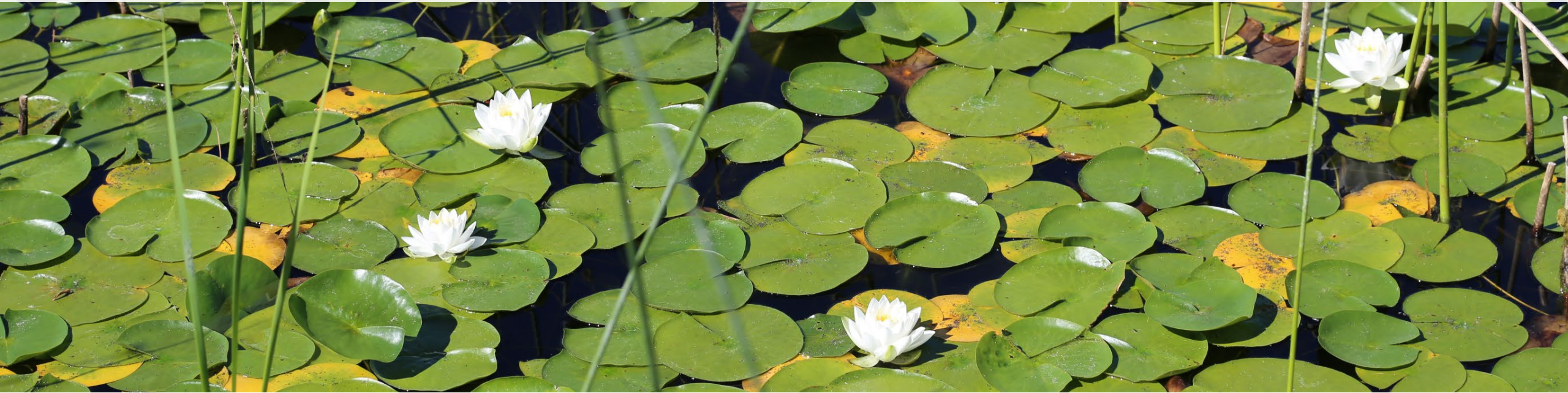




TOOLBOX

Greener for All: Reimagining Access to Parks

March 20, 2026





TOOLBOX Series

- Quarterly webinar series focused on sharing **best practices** and **resources** for local planning and implementation across the region
- Reach out to Katie Enders at kenders@psrc.org with TOOLBOX questions and comments





Upcoming Sessions

TOOLBOX: Local Approaches to Housing and Supportive Services

June 26, 2026
10:00–11:30 a.m.

Learn more at psrc.org/our-work/toolbox





Logistics

- Have a question? Ask in the “Q&A”
- Eligible for one AICP CM credit upon completion
- Stick around at the end to complete our session evaluation and Title VI survey





Session Resources

- Resource handout is available on PSRC's website
- The recording of today's meeting and presentations will be shared after the meeting



TOOLBOX Resource Sheet

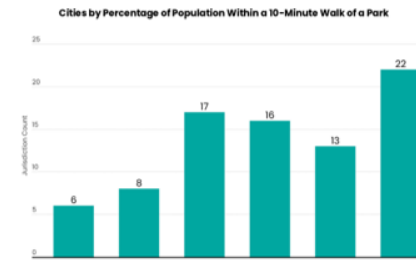
Greener for All: Reimagining Access to Parks

March 20, 2026

Background

Parks and green space provide significant physical and mental health benefits to community members and contribute to a high quality of life. Neighborhood and community parks, passive recreational areas and neighborhood tree canopy help provide these benefits, especially to people living in cities and urban areas.

PSRC's 2024 [Open Space Trends report](#) found that in the central Puget Sound region the percentage of residents in within a 10-minute walk of a park varies widely by jurisdiction. Given the regional goal for all urban residents to live within a 10-minute walk of a park by 2050, the region must continue to add parks in priority areas to improve park access.



Data source: Trust for Public Land ParkServe Database, 2016-2018

Figure from PSRC's 2024 Open Space Trends Report, p. 10.

Resources from Session Speakers

Puget Sound Regional Council

- [Regional Open Space Conservation Plan](#): The Regional Open Space Conservation Plan maps the open space network in King, Pierce, Snohomish and Kitsap counties and identifies priority actions needed to sustain and enhance open spaces for the long term.
- [Open Space Trends](#): PSRC developed a report on trends in open space conservation and enhancement to monitor implementation of the Regional Open Space Conservation Plan.
- [Conservation Toolkit](#): The Conservation Toolkit provides a description of open space, rural, and resource land conservation tools to support local jurisdictions and their partners.
- Other resource are provided on PSRC's [Open Space Conservation](#) page.



TOOLBOX Resource Sheet

Greener for All: Reimagining Access to Parks

March 20, 2026

Trust for Public Land

- [TPL's Communities of Practice](#): The Park Equity Communities of Practice is a national capacity-building and peer learning network that connects cities across the U.S. to advance equitable accessible to parks. With over 600 city stakeholders, including city officials, planners, and parks professionals, from over 180 communities, this network collaborates to develop policy recommendations, share resources, and drive on-the-ground change in park equity practices.
- [TPL's Park Equity Accelerator](#): The Park Equity Accelerator (PEA) is a technical assistance program that helps cities and communities build the research and evidence base, local capacity, and political will necessary to ensure all residents can enjoy the benefits of high-quality, close-to-home parks.

Parks Tacoma

- [Tacoma Community Schoolyards Program](#): The Trust for Public Land, Parks Tacoma, and Tacoma Public Schools are collaborating with schools and community members to redesign and transform the playgrounds at five schools in the Eastside and South End of Tacoma.
- [Tacoma Parks and Zoo Bond](#): In 2014, voters approved a [Neighborhood Parks & Zoo Improvements and Safety Upgrades Bond](#) that has profoundly enhanced public spaces across Tacoma. In April 2026, a [new Parks Tacoma Bond Proposal](#) will be on the ballot for voters to consider.

City of Renton

- [Legacy Square](#): Legacy Square is a visionary project designed to create an inclusive arts and culture hub that will be a lasting amenity providing entertainment, activations, and opportunities for our residents, businesses, community, and visitors for many years to come in Renton's downtown area.

Additional Resources

- [ParkServe](#) | Trust for Public Land
- [Park Planning, Open Space, and Trails](#) | MRSC
- [Planning for Biophilic Cities](#) (2022), PAS Report 602 | American Planning Association
- [From Recreation to Re-Creation](#) (2008), PAS Report 551 | American Planning Association
- [NRPA Research Reports](#) | National Recreation and Park Association





Today's Program

10:00 Welcome and Introductions – *Katie Enders*

10:05 PSRC's Open Space Plan – *Erika Harris*

10:15 The Value of Green Space and Resources for Practitioners– *Sam Savin*

10:35 Case Study: Parks Tacoma – *Sarneshea Evans and Erin Irby*

10:55 Case Study: City of Renton – *Alfonso Orozco, Jessie Kotarski, and Paul Hintz*

11:15 Q&A

11:25 Conclusion – *Katie Enders*



Regional Open Space Conservation Plan Update

TOOLBOX – Greener for All: Reimagining Access to Parks
March 20, 2026



Puget Sound Regional Council

VISION 2050 Supports Access to Parks and Open Space

Multicounty Planning Policy: MPP-En-15: Provide walkable access to parks and trails and prioritize historically underserved communities

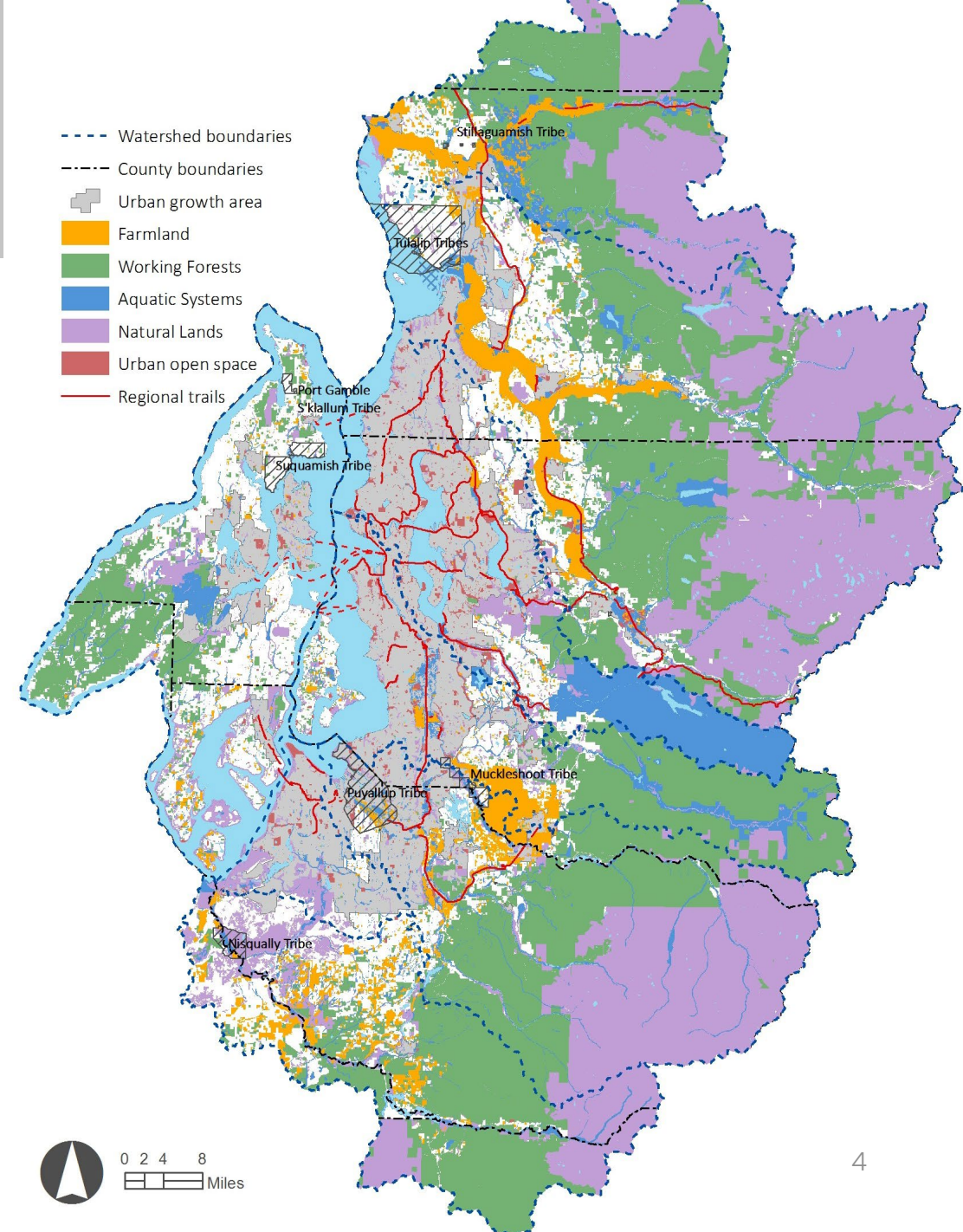


Regional Open Space Network

6 categories of open space:

- Parks and urban open space
- Regional trails
- Farmland
- Working forests
- Aquatic systems
- Natural lands

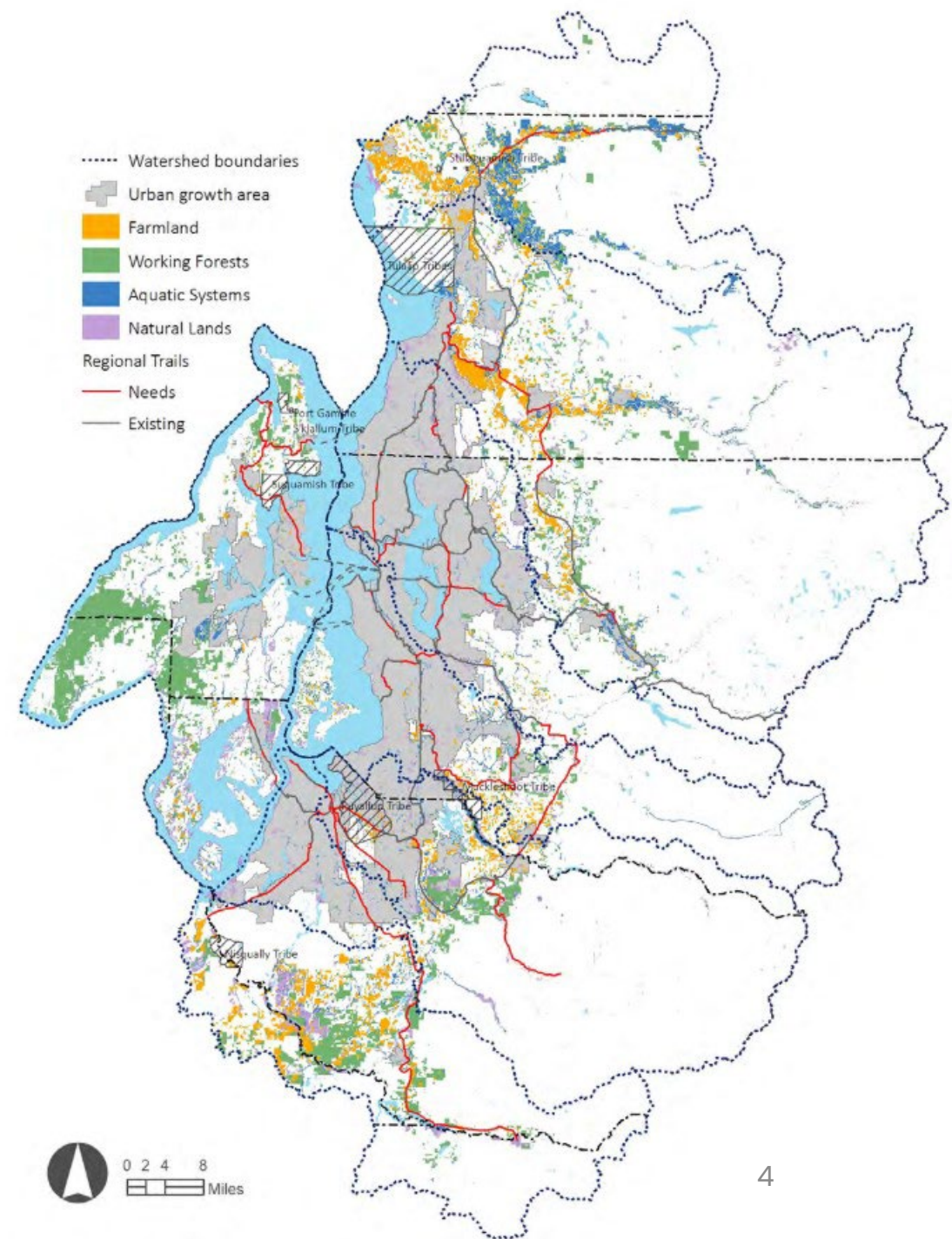
[Regional Open Space Conservation Plan](#)



Conservation Needs

Conservation Needs in the Regional Open Space Network:

- Farmland: 104,000 acres
- Working Forests: 183,200 acres
- Aquatic Systems: 93,700 acres
- Natural Lands: 81,700 acres
- Regional Trails: 300 miles
- Highest priority urban open spaces: 47 parks

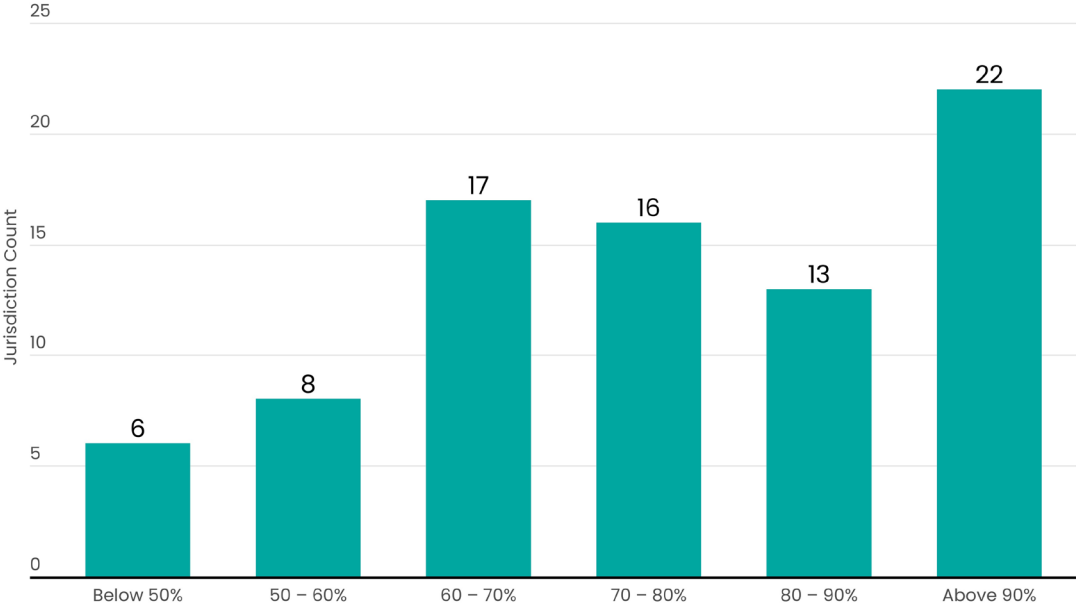


Urban Open Space

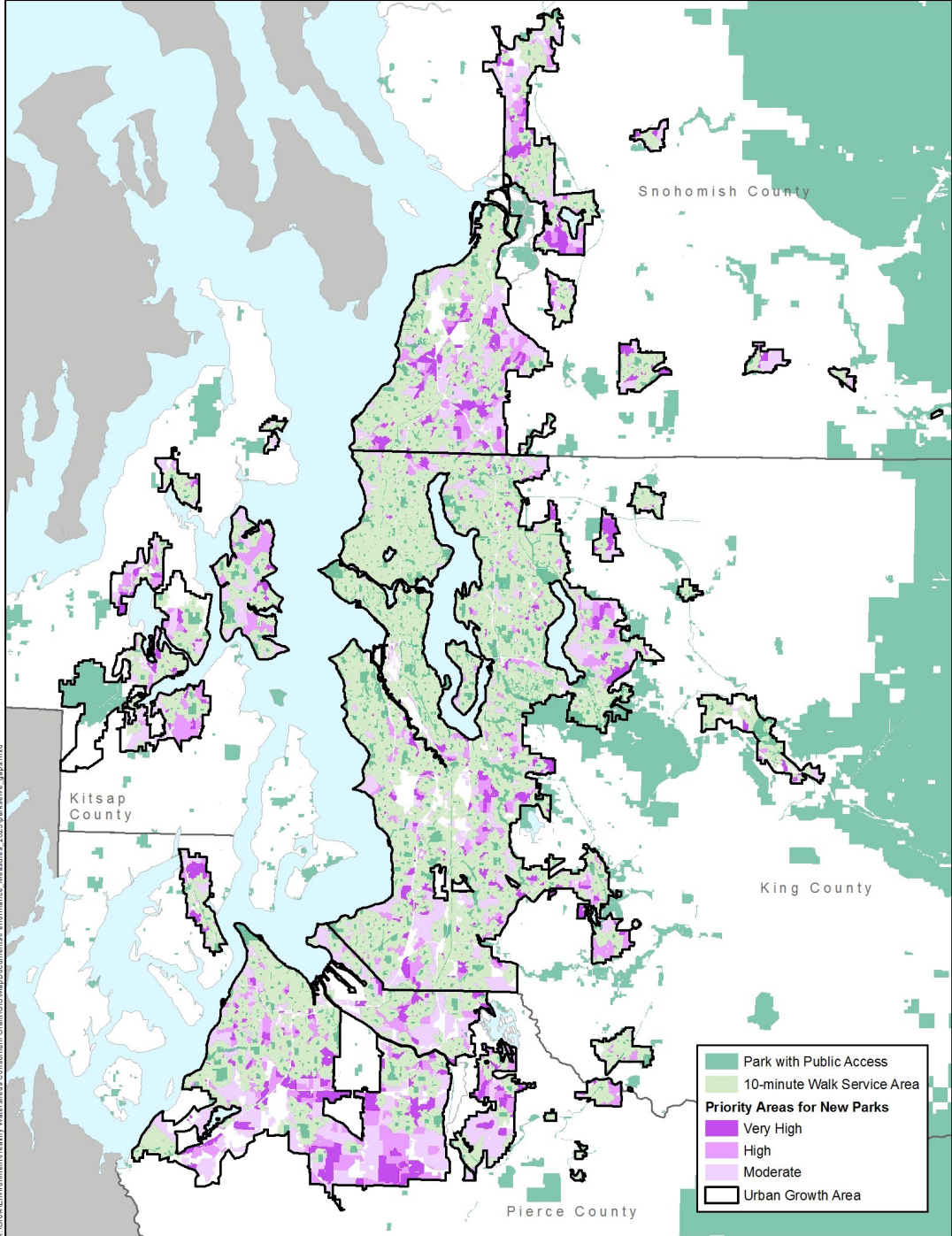
Goal: By 2050, all urban residents within a 10-minute walk of a park.

ParkServe: urban population within a 10-minute walk of a park: 72%

Cities by Percentage of Population Within a 10-Minute Walk of a Park



Data source: ParkServe, Trust for Public Land

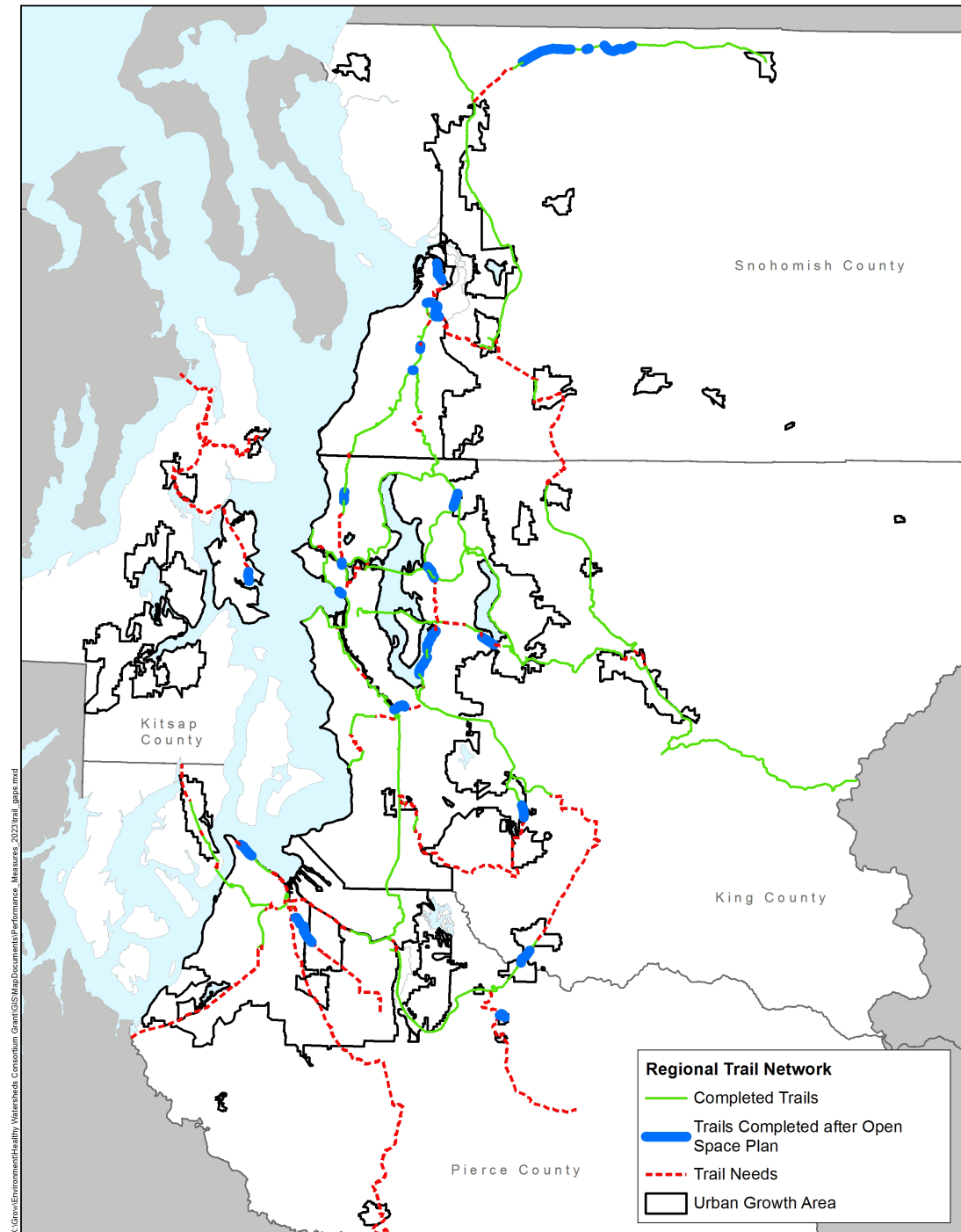


Regional Trails

Goal: By 2050, add 300 miles to the regional trail network

Since 2018, 30 miles added to the regional trail network. Examples:

- Mountains to Sound Greenway Trail in King County
- Sound to Olympics Trail in Kitsap County
- Pipeline Trail in Pierce County
- White Horse Trail in Snohomish County



Engagement

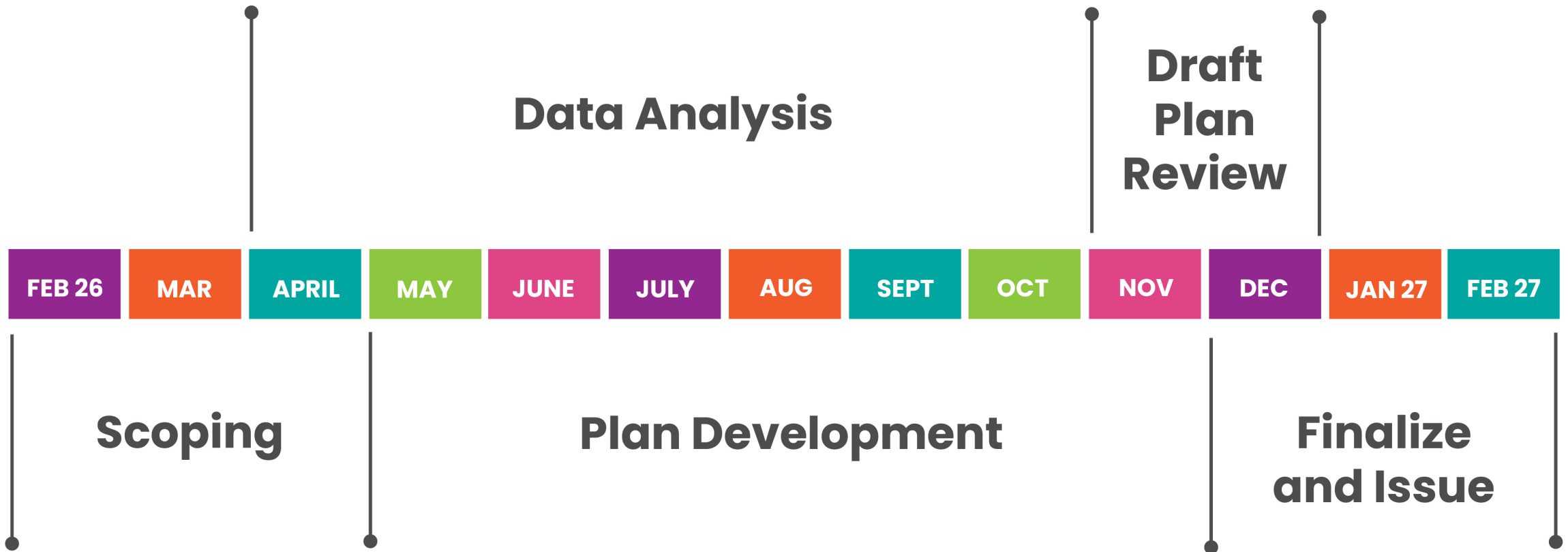


Key partners in plan development:

- PSRC boards and committees
- County staff
- Advisory committee
- Tribes
- Environmental Resource Agency Coordination Group
- Countywide planning groups
- Land conservancies



Open Space Plan Update Schedule



Thank You!

Erika Harris, AICP

Senior Planner,
eharris@psrc.org



Puget Sound Regional Council



Sam Savin, Associate Director, Technical Assistance, Parks Program

Sarneshea Evans, Washington Parks for People Program Director

Alfonso Orozco, Washington Parks for People Project Manager

Connecting everyone to the outdoors™



**TRUST FOR
PUBLIC
LAND®**

Connecting everyone to the outdoors™

About Us

We create parks and protect land for people, ensuring healthy, livable communities for generations to come.

Photo: Andy Richter



Communities that value and invest in
OUTDOOR ACCESS
FOR ALL ARE...



HEALTHIER



MORE RESILIENT



MORE INCLUSIVE

OUR WORK ON THE GROUND



Our technical know-how is unmatched, but it's our **ability to truly listen and build trust that helps us bridge perspectives, find common ground, and create lasting relationships.**

We turn our partners' shared visions for green space into lasting reality by doing the following:



CONSERVING LAND AND CULTURAL SITES



CREATING PARKS, TRAILS, AND SCHOOLYARDS



PLANNING AND DESIGNING WITH COMMUNITIES

PARKS MAKE HEALTHY, RESILIENT, AND CONNECTED CITIES



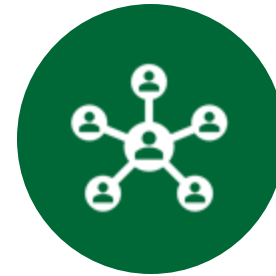
Parks spur physical activity which can reduce risk of chronic disease.

Read more:
<https://www.tpl.org/parks-promote-health-report>



Communities within a 10-minute walk of a park are up to 6 degrees cooler than areas beyond that range.

Read more:
https://www.tpl.org/wp-content/uploads/2022/09/The-Heat-is-on_A-Trust-for-Public-Land_special-report.pdf



Parks and green space facilitate social interactions and social connectedness.

Read more:
<https://www.tpl.org/resource/common-ground-framework-report>



Parks catalyze economic development and improve quality of life for residents

Read more:
<https://www.tpl.org/media-room/new-research-when-cities-invest-in-parks-talent-and-development>

100 MILLION PEOPLE IN THE U.S. DON'T HAVE A PARK WITHIN A 10-MINUTE WALK OF HOME

Parks in majority nonwhite neighborhoods are **half as large** and **serve nearly five times more people** than parks in majority white neighborhoods.

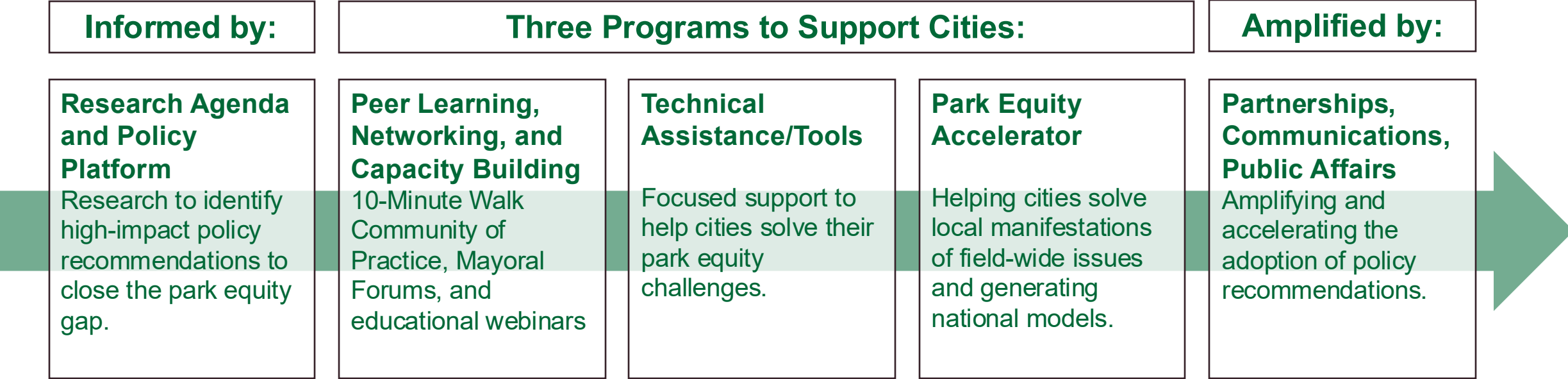
Parks serving majority low-income households are, on average, **four times smaller** and **serve nearly four times more** people than parks that serve majority high-income households.

65 of the largest 100 U.S. cities have less park space per person today than they did 10 years ago.

Common Challenges for Improving Park Access and Quality

- Parks are underfunded.
- Built-out cities might not have space to add parkland.
- Cities with declining populations might have more parks and greenspace than they can manage.
- Maintenance is underfunded.
- Cities lack the data they need.
- Community members aren't empowered in decision-making about parks.

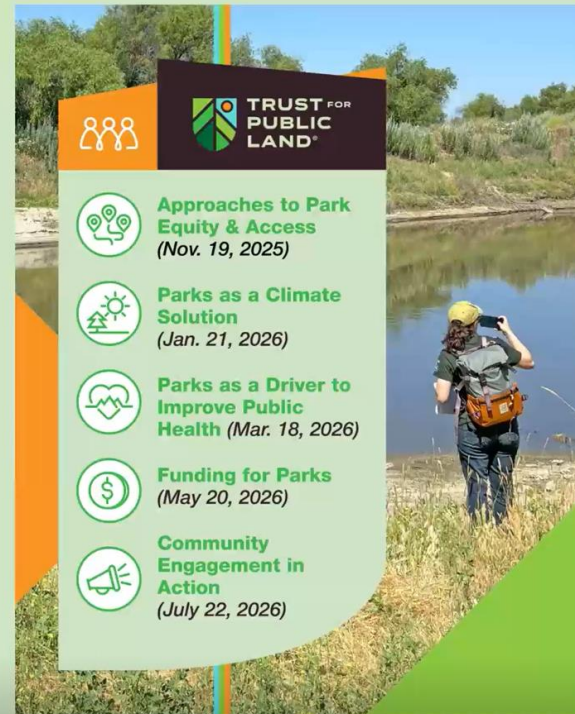
10-Minute Walk® Brings a Strategic Approach to Answering the FAQs of Parks Practitioners



Sessions – Join Us!

Program Structure

- 90-minute virtual workshops
- Panel presentations
- Sharing tools and resources
- Small group discussions
- Attend any session that interests you
- **Everyone is welcome – help us spread the word!**



Goals

- **EXPLORE-** Create cohorts around 'high impact' strategies and topics.
- **LEARN-** Curate panels, trainings, presentations to highlight city examples and creative approaches.
- **CONNECT-** Facilitate discussion groups, allowing time for peer exchange and resource sharing.

2021-2022

150 participants from 50 cities

Approaches to Park Equity

2022-2023

200 participants from 60 cities

Developer Park Partnerships

Community Engagement

Park Qualities

2023-2024

200 participants from 100 places

Parks Maintenance

Rural Lands & Recreation

Parks Plus: Affordable Housing

Community Power

2024-2025

200 participants from 100 places

Policy Cohort

Community Forests

Parks Plus: Economic Vitality

Park Stewardship

Access & Connectivity

2025-2026

ongoing

Policy Cohort

Community Forests

Crossing Sectors

Park Programming

Black History and Culture

DCNR Pennsylvania

Central Valley California

In 5 years, we have...

- Engaged over 1000 practitioners spanning 250 communities
- Created 20 cohorts organized by high priority themes, regions, and partnerships.
- Produced and co-developed 8 resources



Park Equity Accelerator Overview

The Park Equity Accelerator is a **nationally-competitive, cohort-based technical assistance program** led by TPL.

The PEA works hand-in-hand with communities across the country to **increase park access and quality through policy and systems-change.**

The PEA provides communities with the **research and evidence, capacity, and and willingness from elected and agency leaders** necessary to increase park access and quality, **working across teams at TPL.**

Since 2022, TPL has implemented PEAs in **21 cities** across the country working with over **250 practitioners and community members.**

PEA Program Goals

1. **Increase park equity** in local communities by developing policy and systems-change interventions that respond to practitioners' "frequently asked questions."
2. **Bring park equity to scale** by sharing policy models, case studies, and other insights with communities across the country.
3. **Integrate community** into the local policy making process.

The Core Components of the PEA

Engagement with community:

To identify and refine local priorities for park equity.

Research and analysis:

To identify models for increasing park equity and build the case for change.

Trainings:

To equip cities with best practices and support from TPL.

Cohort building:

To share models across cities and build confidence and will to take action.

Pilots:

To demonstrate the feasibility of implementing new models.

Implementation support:

To help cities take action and problem solve.

Accelerator Success Stories

- **Boston:** Building new model for partnership with housing authorities. BHA now planning on allocating 1% of capital budget for open space.
- **Pittsburgh:** Thousands of new parcels being brought into public ownership & city is making it easier for residents to steward land (simplified volunteer agreements).
- **Scranton:** City conducted walkability audit for Scranton. Audit is now being scaled up to numerous other communities across PA via funding from DCNR.
- **Washington D.C.:** Helped the District's Parks & Rec Department conduct a pilot to test new strategies for improved data collection and park maintenance. The Department has now implemented this as standard practice and is leading efforts to elevate maintenance as a District-wide priority.

Responding to Submitted Questions

What metrics are communities using to measure access to parks? How is access paired with park level of service standards?

- 95% of the largest US cities use 10MW as standard for park access.
- Acres per capita
- Access to different amenity types/”experiences”

Any way to make streets in urban areas have more greenery, not just dedicated parks?

- Street trees (including developer requirements), greening ROWs, privately-owned public space, etc.
- Check out recordings from recent Community of Practice on “non-traditional lands”:
<https://10minutewalk.org/communities-of-practice-crossing-sectors/>

Ideas for addressing real or perceived Safety Concerns

- Programming can help.
- Check out recordings from recent Community of Practice on “programming with purpose”:
<https://10minutewalk.org/communities-of-practice-park-programming/>

Case Study: Parks Tacoma & Trust for Public Land

ERIN IRBY, CAPITAL PROJECT ADMINISTRATOR | PARKS TACOMA

PARKS
TACOMA

Metropolitan Park District of Tacoma

- Established in 1907; Washington's oldest incorporated independent Park District
- >2,900 acres of parks, open space, community centers, pools, sports fields, zoological facilities, marina, golf course, and historic attractions
- Operates under an elected 5-member Board of Commissioners who serve 6-year terms

Park Equity Accelerator (PEA)



Cohort 3

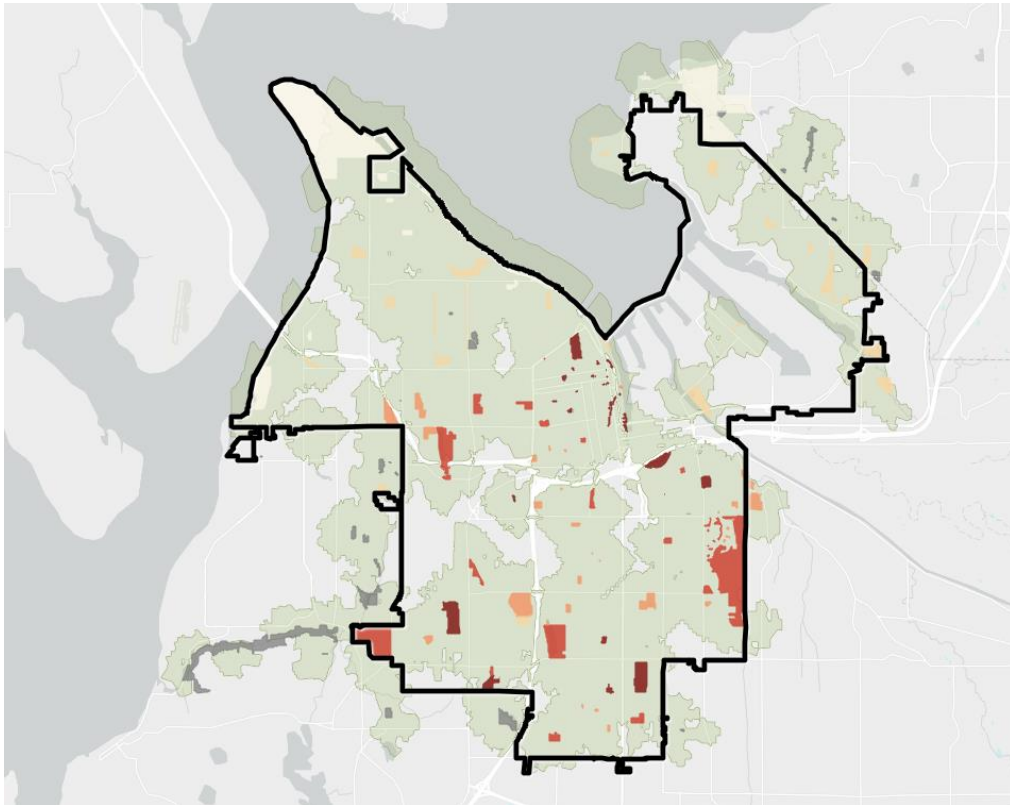
- **Birmingham, AL and Tacoma, WA** - Increasing park connectivity and access
- **Bridgeport, CT and San Jose, CA** - Equitable budgeting for parks
- **Chicago, IL and New Haven, CT** - Increasing funding for parks
- **King County, WA** - Encouraging co-development of parks and housing

Tacoma Park Equity Accelerator (PEA)



- **Focus:** Creating safe community connections for Tacoma residents to walk, bike, and roll to local parks.
- **Partners:** Parks Tacoma and City of Tacoma (Transportation Division and Environmental Services - Urban Forestry and Stormwater)
- **Deliverables:** Policy recommendations and models
- **Pilot Projects:**
 - Geospatial tool
 - Trust for Public Land mini-grant to support a project that will enhance community connectivity
- **Additional Support:** Parks Tacoma and the City of Tacoma's 10-year Interlocal Agreement

Tacoma Park Equity Accelerator (PEA)



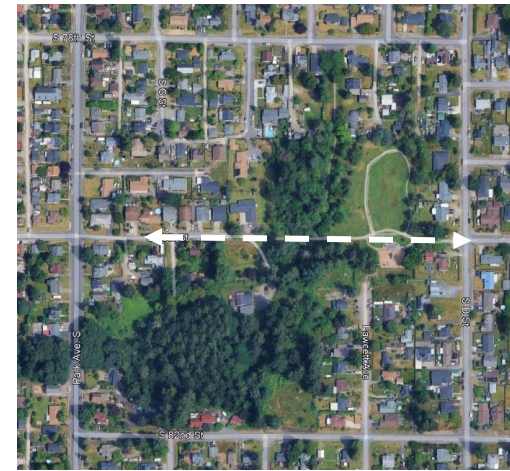
- **GIS Tool:** Will highlight overlapping park and city priority areas to support future decision making and joint investments
 - Parks Tacoma
 - City of Tacoma (Transportation, Urban Canopy, and Watershed)

- **Partner Project:** Tacoma On the Go will lead community engagement, guided walks, and bike rides in support of Ryan's Park improvements

Tacoma Park Equity Accelerator (PEA) - Ryan's Park



- South End; Fern Hill Neighborhood
- **Maximizing capital investments** in a priority area for Parks Tacoma and City of Tacoma
 - Park project focused on a pedestrian bridge, improved sidewalk access, and site furnishings, entrance sign design
 - City addressing Safe Route to Schools and adjacent street safety improvements
 - Future Active Transportation corridor on Park Avenue



TPL's Bond & Conservation Finance Support



Trust for Public Land's Conservation Finance team supports state and local jurisdictions with ballot measures and legislation that will increase community use and access to parks, lands, trails, and schoolyards across the country.

- Support ballot measures and legislative campaigns
 - Feasibility research
 - Public opinion surveys
 - Ballot measure design
 - Integrated campaign planning, management, and fundraising
 - Design and analysis of campaign polls
 - Get-out-the-vote campaigns

How 2026 Bond Was Shaped

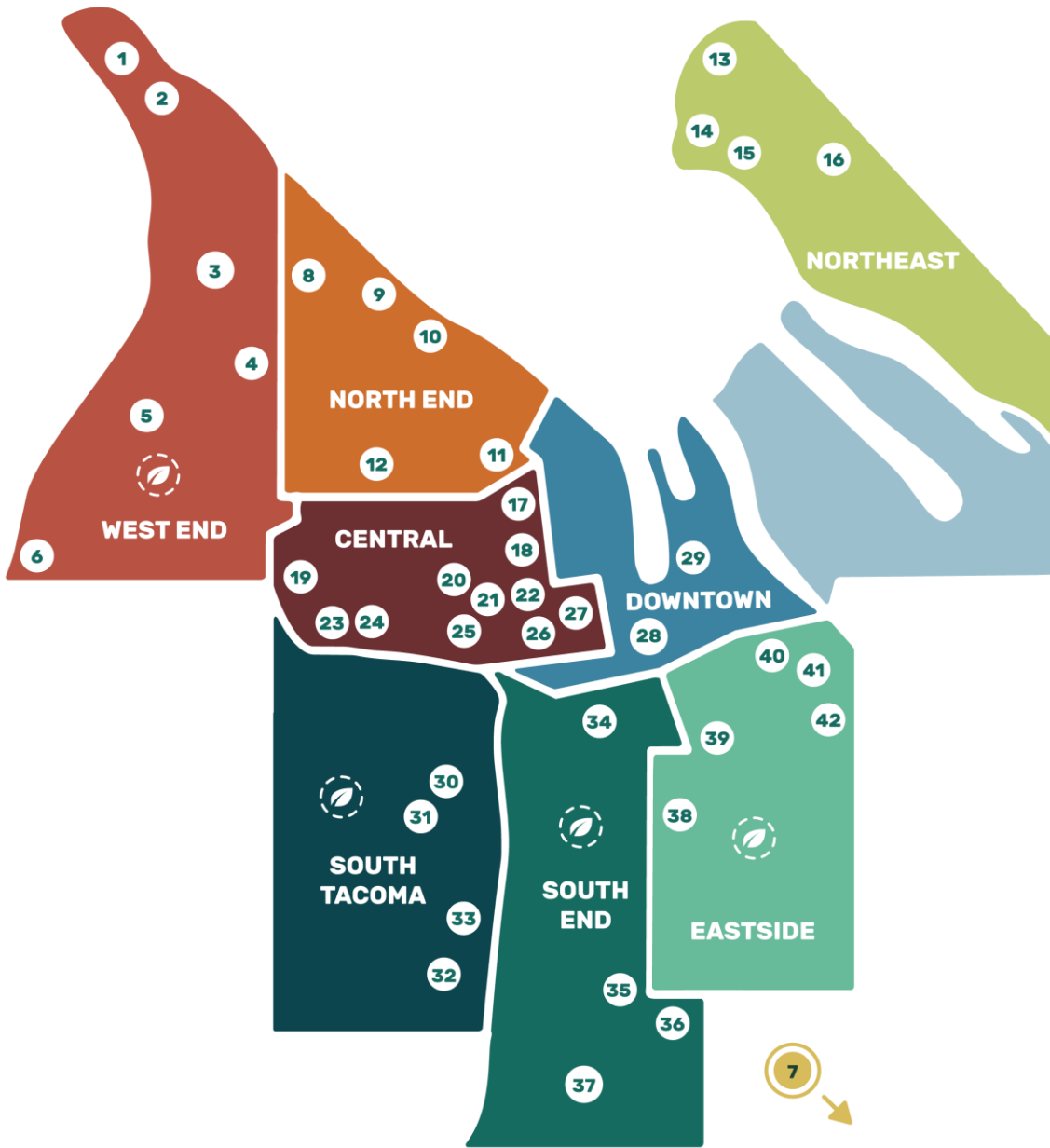


- More than a year of internal analysis of needs
- **Park Bond Advisory Committee:**
28 community members representing interest and geographic areas of the city
 - Advisory councils
 - Local governments
 - Nonprofits
 - Businesses
 - User groups

Recommendations

- **No tax increase, given economic uncertainty**
- **Equitable investments across Tacoma**
- **Project categories:**
 - Neighborhood identity, local parks
 - Connections to parks
 - Land acquisition to address growing population





UPGRADES KEY



ENVIRONMENTAL CONSERVATION



INFRASTRUCTURE



PLAYGROUND



SPRAYGROUND



POOL



SKATE PARK



WATERFRONT



TRAILS AND CONNECTIONS



SPORTS FIELDS AND COURTS



GENERAL PARK IMPROVEMENTS



RESTROOM



COMMUNITY CENTER CONSTRUCTION



COMMUNITY CENTER DESIGN



COMMUNITY CENTER RENOVATIONS



HISTORIC RESTORATION



NEW PARK SPACE SITE TBD

PARKS AND UPGRADES

WEST END

- 1. Point Defiance Park 🌿 🏞️ 🚶 🚲 🏠
- 2. Point Defiance Zoo & Aquarium 🐾 🐠 🏠
- 3. Vassault Park 🏠
- 4. Kandle Park 🏠
- 5. Optimist Park 🚶
- 6. Titlow Park 🚶 🏠

PIERCE COUNTY

- 7. Northwest Trek Wildlife Park 🐾 🏠

NORTH END

- 8. Jane Clark Park 🚶
- 9. Ruston Way Waterfront 🏠 🚶 🚲
- 10. Les Davis Pier* 🏠
- 11. Wright Park 🏠 🏠
- 12. Jefferson Park 🏠 🏠

NORTHEAST

- 13. Dash Point Park and Pier 🏠 🚶
- 14. Browns Point Playfield 🏠
- 15. Browns Point Community Sports Park* 🏠 🚶
- 16. Norpoint Park/Center at Norpoint 🚶 🏠

CENTRAL

- 17. Neighbors Park 🏠
- 18. People's Park 🚶
- 19. DeLong Park 🏠 🚶
- 20. Peck Community Sports Park 🚶
- 21. Stanley Playfield 🏠 🚶

- 22. People's Community Center 🏠
- 23. Heidelberg Davis Athletic Complex 🏠 🏠
- 24. Tacoma Nature Center 🏠
- 25. Irving Park 🏠 🚶
- 26. Sawyer Tot Lot 🏠
- 27. Sheridan Park 🏠 🚶

DOWNTOWN

- 28. Downtown Skate Park 🏠
- 29. Waterway Park* 🏠

SOUTH TACOMA

- 30. South Park 🏠 🏠 🚶
- 31. STAR Center & SERA 🏠 🏠 🏠 🏠
- 32. Oak Tree Park 🏠
- 33. Wapato Hills Park 🚶

SOUTH END

- 34. Lincoln Park 🚶 🏠
- 35. Ryan's Park 🏠 🚶
- 36. Charlotte's Blueberry Park 🚶 🏠
- 37. South End Community Center* † 🏠

EASTSIDE

- 38. Stewart Heights Park 🏠
- 39. Verlo Playfield 🏠 🏠
- 40. Rogers Park 🚶
- 41. Portland Avenue Park 🏠 🏠
- 42. Swan Creek Park 🚶 🚶 🏠

* Design only † Site TBD

Protecting Our Parks Legacy



- Connecting with nature and wildlife
- Investing in your neighborhood
- Keeping your parks open and safe
- Creating community gathering space
- Enhancing sports and active lifestyle

Tacoma Community Schoolyards Program

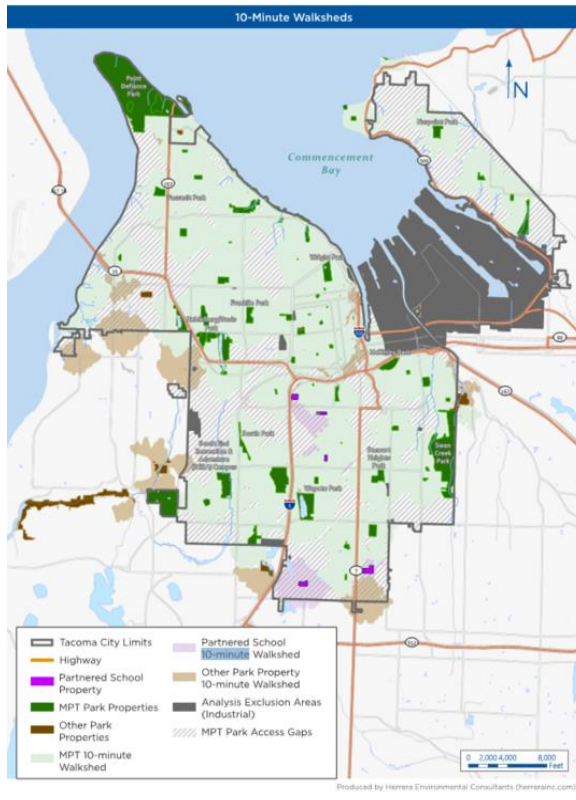
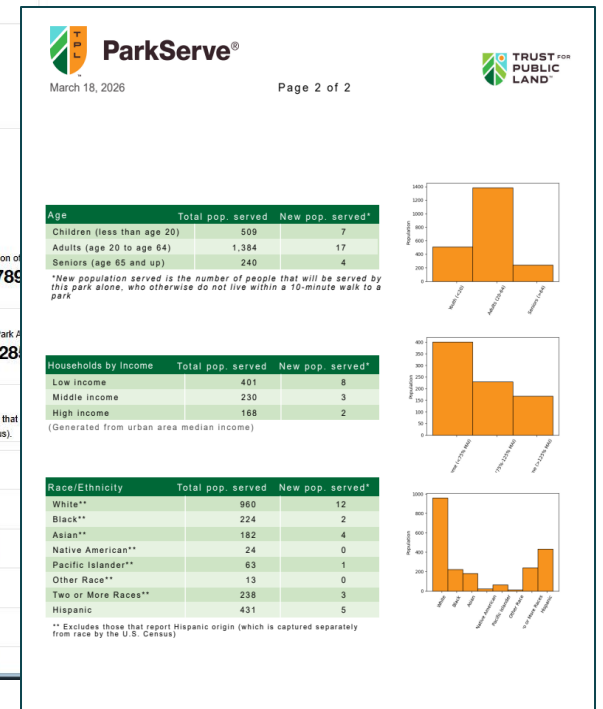
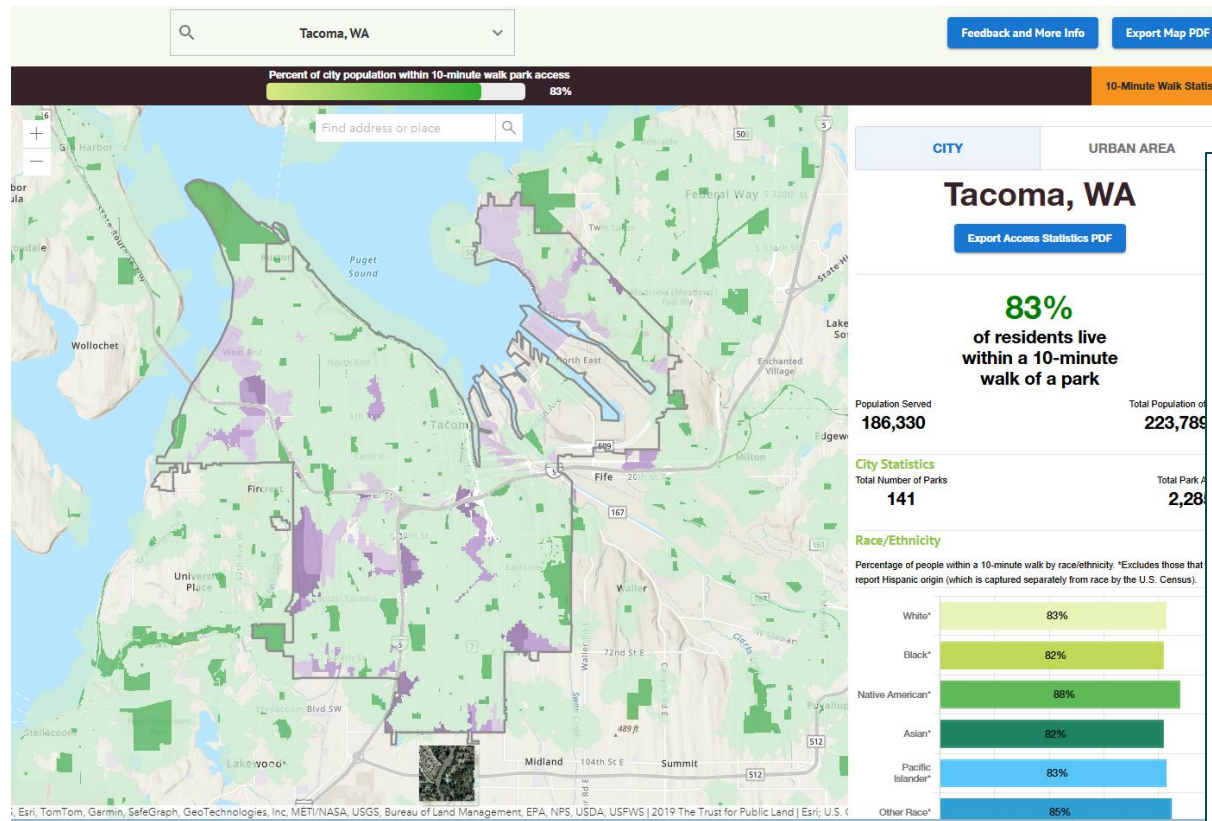


Figure 34: MPT System with 10-Minute Walksheds



Tacoma Community Schoolyards Program

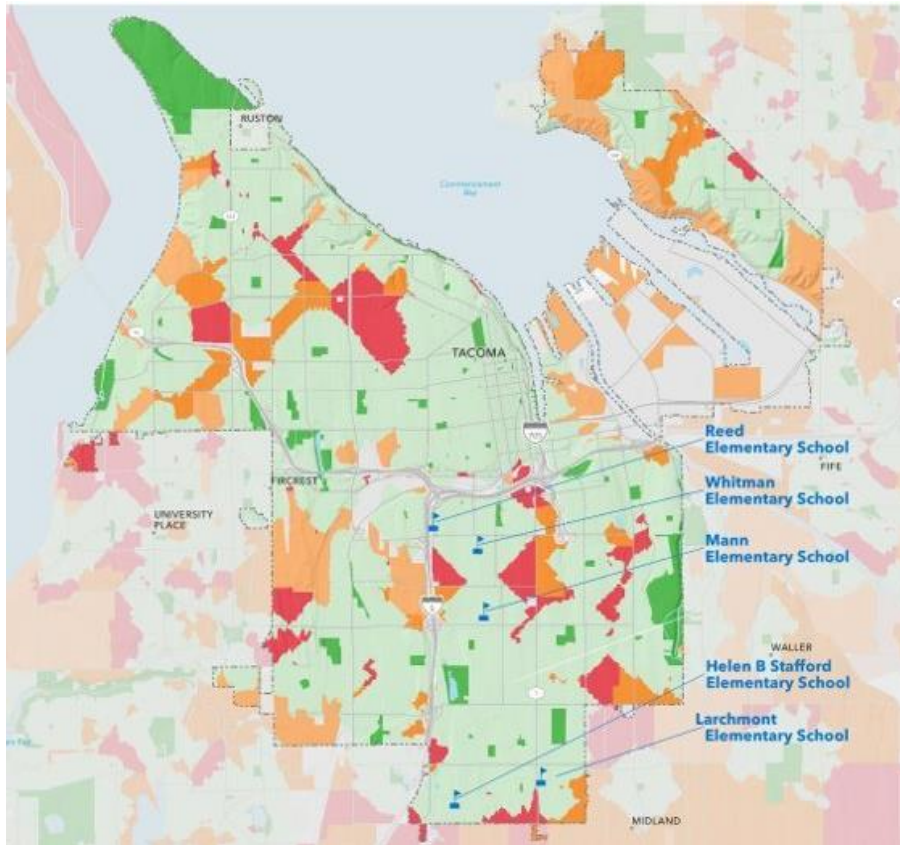


Charlotte's Blueberry Park



First Creek Community Space

Tacoma Community Schoolyards Program



Tacoma Community Schoolyards Overview:

- Five pilot schools
 - # students served
- Partners:
 - Tacoma Public Schools
 - Parks Tacoma
 - City of Tacoma (Safe Routes to Schools)
 - Faith based groups
 - Local community and grassroots organizations
 - Neighbors
- Joint use agreement

Tacoma Community Schoolyards Program



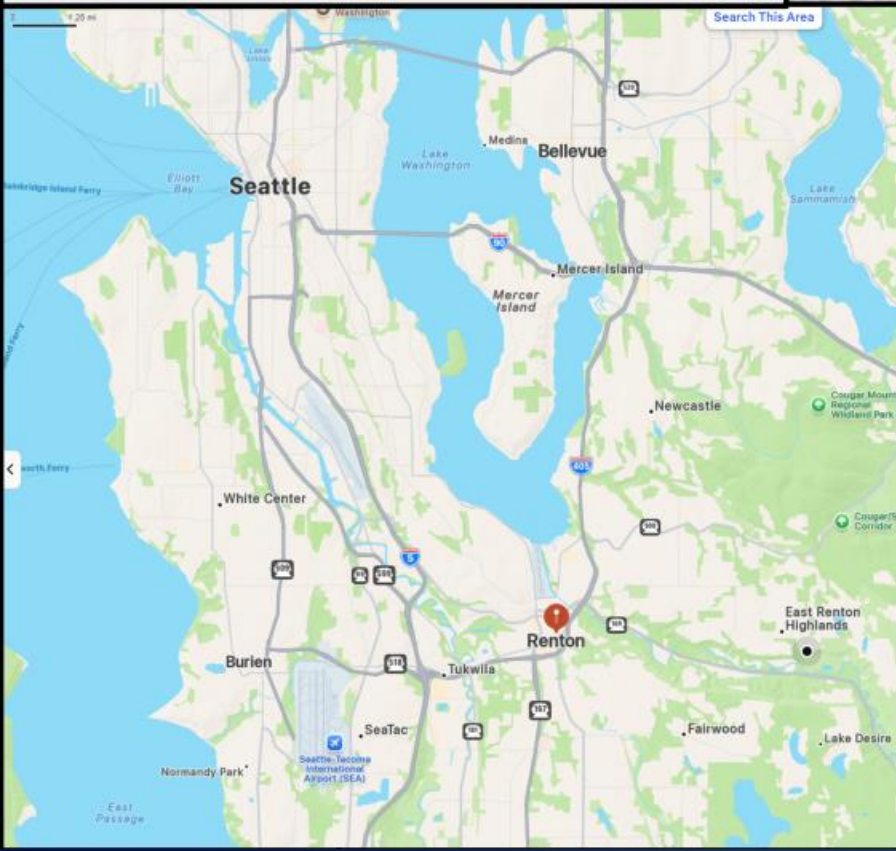
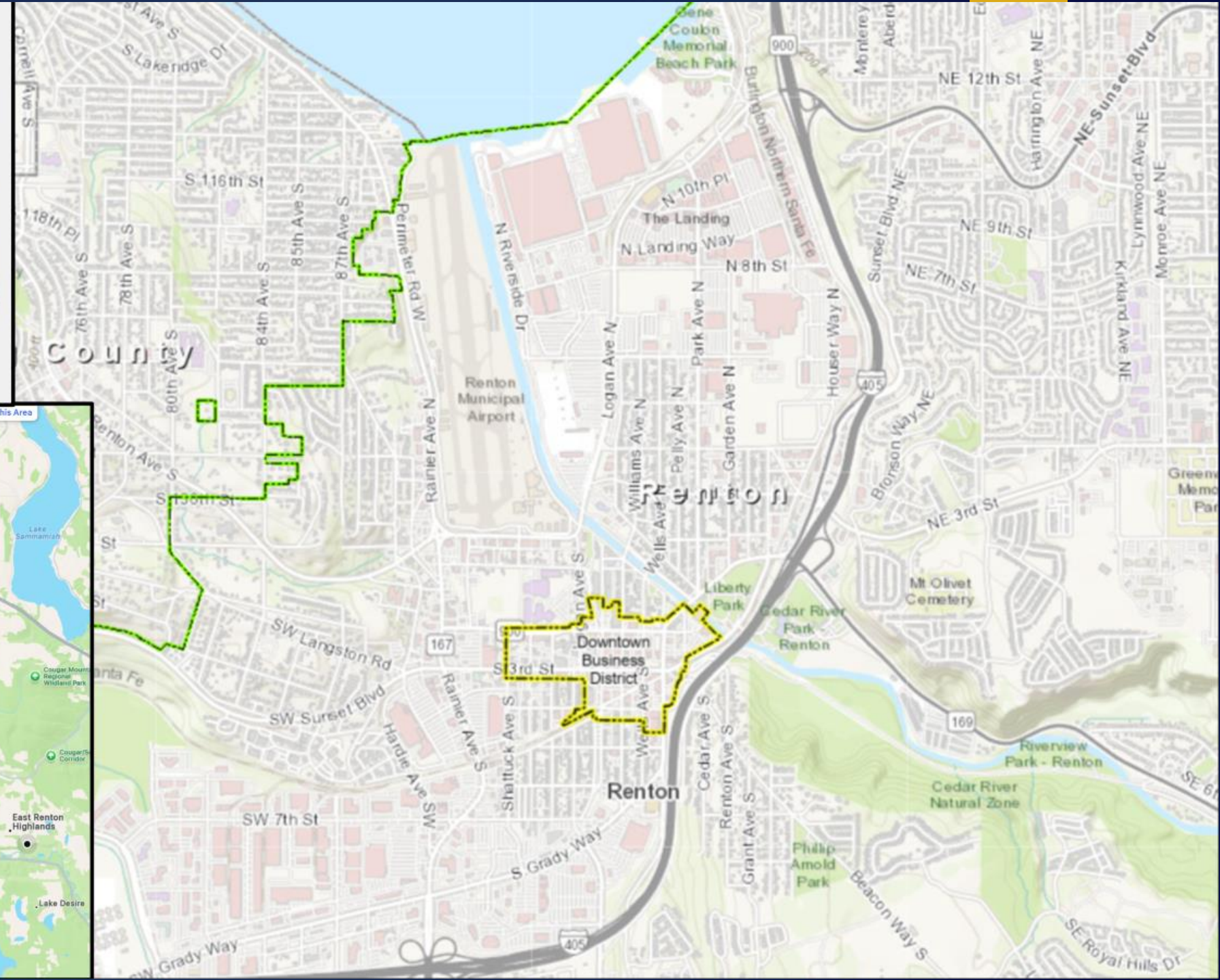
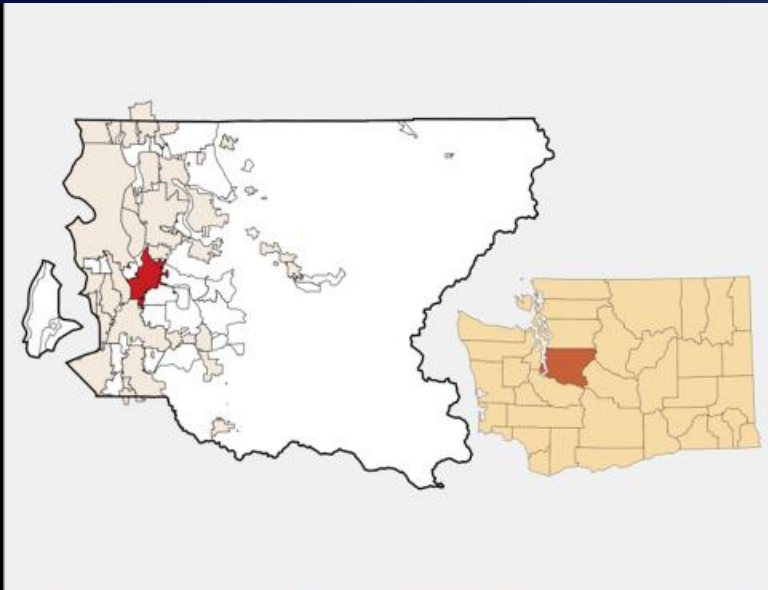


Case Study Legacy Square

City of Renton

PAUL HINTZ, REDEVELOPMENT MANAGER

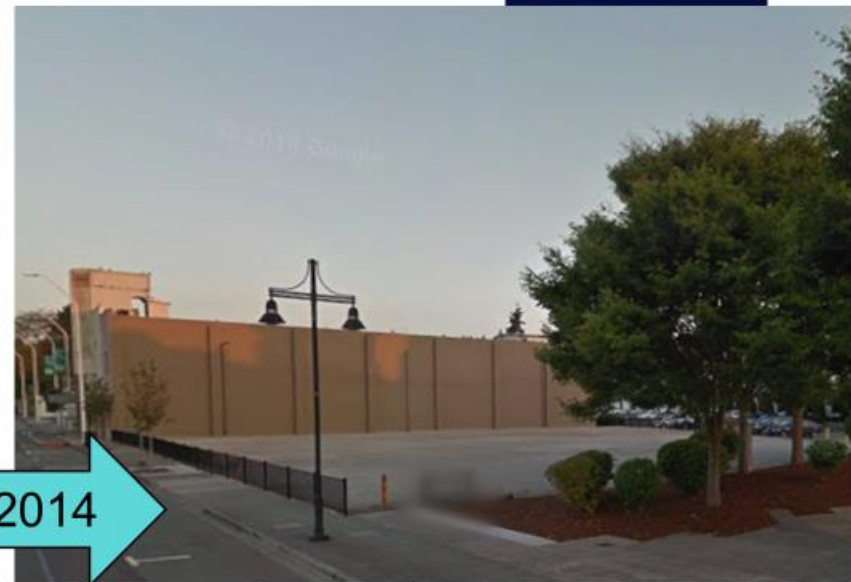
JESSIE KOTARSKI, ECONOMIC DEVELOPMENT MANAGER





Car Dealership

2007



2013-2014

This was the 1970s view on Renton's South Third Street, about three decades before we purchased the car dealership and the Sporting Goods store (on the left) for park use. (Photo credit [Renton Historical Society](#))



Today

2024





RENTON MARKET



HEART BLOCK

Legacy Square

Future Festival Street

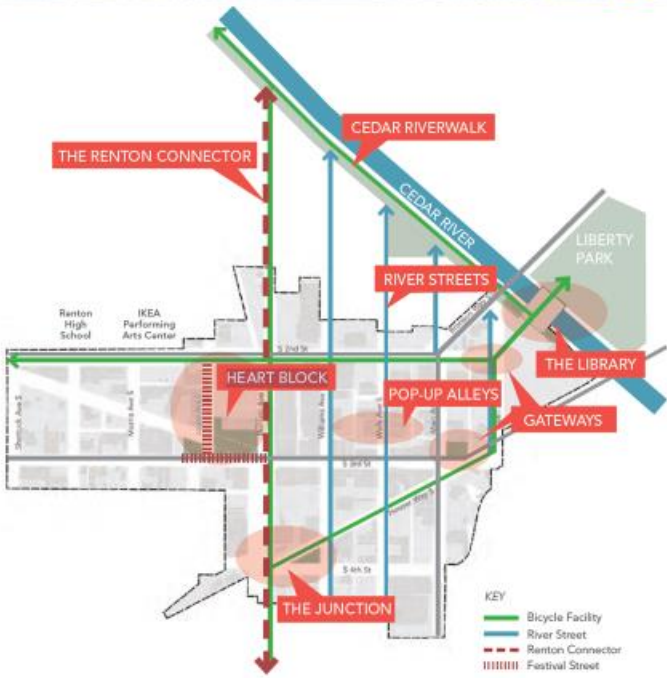
Public Parking Garage

Renton Transit Center

The Pavilion

Piazza Park

Future "Renton Connector"



Map of key public spaces and destinations in the Civic Core and Downtown Renton







SQUARE TALK

shaping our future



Tuesday, August 27, 4-7pm
S 3rd St & Logan Ave S
at Renton Farmers Market



SQUARE TALK

shaping our future

Everyone Welcome!



Questions? Email thrive@rentonwa.gov





RRAVE
FFOUNDATION®



**URBAN
ARTWORKS**



SUMMER 2026

LEGACY SQUARE

THE SQUARE IS HERE. LET'S TURN UP THE ENERGY!

Legacy Square will host watch parties, cultural events, live performances, movies, and community gatherings — all designed to bring people into Renton, increase foot traffic, and support our local businesses.

THIS IS A PILOT SEASON. WE'RE BUILDING IT TOGETHER.

WHY WE'RE DOING THIS

- To drive visitors to Renton
- To create reasons for people to stay, explore, and shop local
- To support small businesses during a high-traffic summer season
- To test what Legacy Square can become long-term

THE FUTURE OF THE SQUARE

Summer 2026 is just the beginning. We're testing what works, learning in real time, and building a model that supports:

- Small business growth
- Arts and culture
- Community gathering
- Long-term downtown vibrancy

SAVE *the* DATE

GRAND OPENING *of* LEGACY SQUARE

Saturday, June 6, time TBD
S. Third Street *and* Logan Avenue South

RENTONWA.GOV/LEGACYSQUARE



EXPERIENCE THE WORLD CUP IN RENTON!

Find information at rentonwa.gov/soccer2026



RENTON
ready to play!



Trust for Public Land Support

- Legacy Square expands the idea of what a public space can be
- Aligns with TPL's Placemaking philosophy
- Fundraising support
- Community Engagement



Questions?





Upcoming Sessions

TOOLBOX: Local Approaches to Housing and Supportive Services

June 26, 2026
10:00–11:30 a.m.

Learn more at psrc.org/our-work/toolbox





Thank you for joining us today!

You are eligible to claim one AICP CM credit by searching **TOOLBOX- Greener for All: Reimagining Access to Parks** or using ID **#9324527**.

A short attendee survey will be provided at the end of the webinar, to meet PSRC's Title VI requirements.

You are not required to disclose the information requested in order to participate in this meeting. PSRC will handle the information gathered as confidentially as possible.

For further information regarding this process please contact the Title VI Coordinator at cpatton@psrc.org.

