

Regional Transit Access Project

Regional Staff Committee

April 2, 2026



Puget Sound Regional Council

Today's Discussion

- Background on the project
- Continuing work on regional transit access assessment
- Next steps/Key milestones



Regional Transportation Plan (2022) calls for PSRC to:

“...Develop and update tools and resources to **help identify where access to transit can be improved**, particularly for bicyclists and pedestrians. ”

Transit access in RTP:

- Transit-Oriented Development (TOD)
- Walk, Bike, and Roll
- Transit Service
- Drop-off/Pick-up Modes
- Parking



Transit Access Checklist

- The Checklist provides a framework for conducting a **comprehensive assessment of existing transit access conditions** at any given location.
- It also includes relevant data sources and transit agency and PSRC contacts.



Transit Access Toolkit

- The Toolkit identifies **various tools for improving transit access and organizes them** across eight strategic areas.
- The Toolkit was designed to help stakeholders understand how each strategic area increases transit access and the roles played by various stakeholders.



2023 Transit Access Assessment Recommendations

- **Automate and streamline the tools** to help local agencies more easily assess transit access needs and opportunities.
- Develop clear and comprehensive information on the **roles and responsibilities** of agencies.
- **Integrate new emerging themes**, including safety, equitable engagement, and new technologies to transit access tools.
- Develop guidance on **equitable engagement and outreach** for transit access.

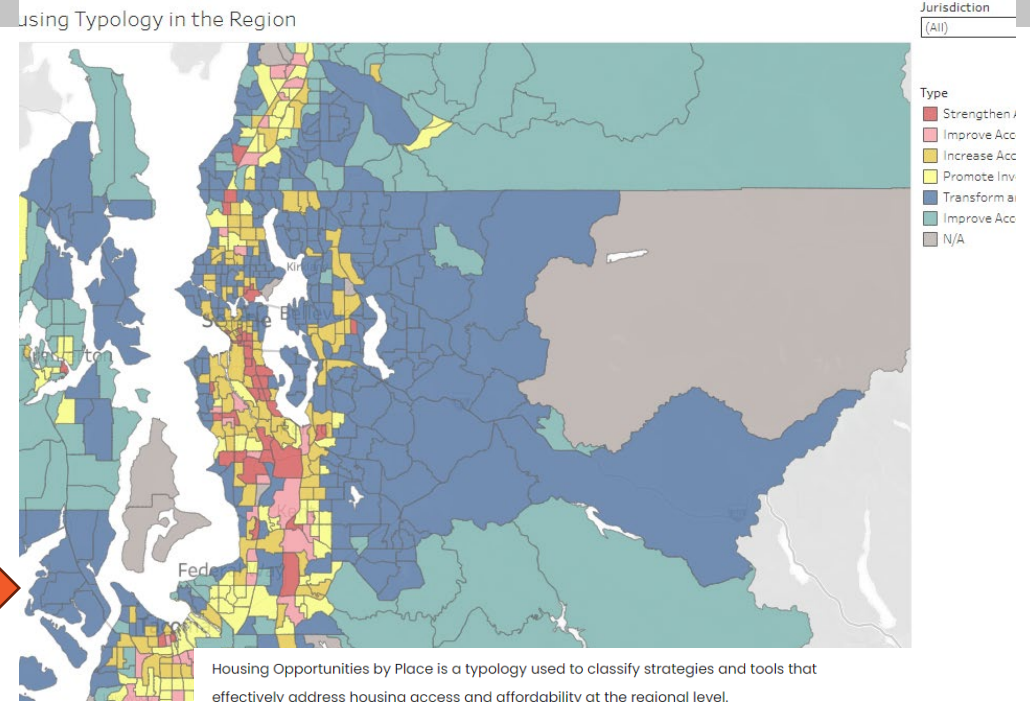


Models for Tools to Assist PSRC Member

- Housing Opportunities by Place (HOP)
- Regional Safety Action Plan

How we intend to apply:

- Online mapping visualization – typologies
 - Replaces current checklist
- Link to strategies to address needs
 - Replaces current toolkit



Explore Tools by Type

- Priority Tools for All Communities
- Promote Investment & Opportunity
- Improve Access & Housing Choices
- Improve Access & Affordability
- Increase Access to Single Family Neighborhoods
- Transform & Diversify
- Strengthen Access & Affordability



Development of a Regional Transit Access Assessment Methodology

Transit Access Needs

- Transit-supportive Density thresholds
- Motorized Access
 - Transit
 - Pick-up/drop-off
 - Parking
- How-to improve access in station/stop areas
 - Safety for walk/bike
 - Walk/bike
 - Route Directness

Transit Access Strategies

- Organized/ designed to address both:
 - Contextual elements in different geographies
 - Technical transit access needs
- Will also cross-reference to guidance on:
 - Roles and responsibilities
 - Community engagement

Context by Place

- Regional Growth Centers
- Manufacturing/ Industrial Centers
- HCT station areas
- Countywide Centers
- Rural Areas



Building a Regional Transit Access Needs Typology

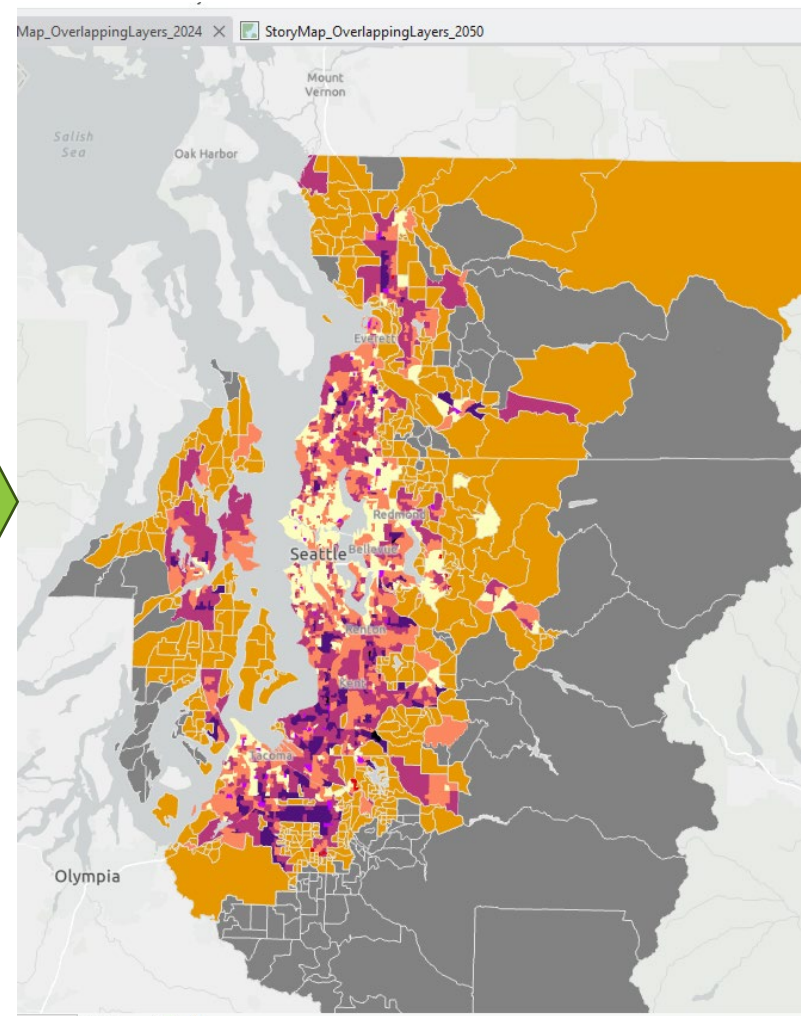
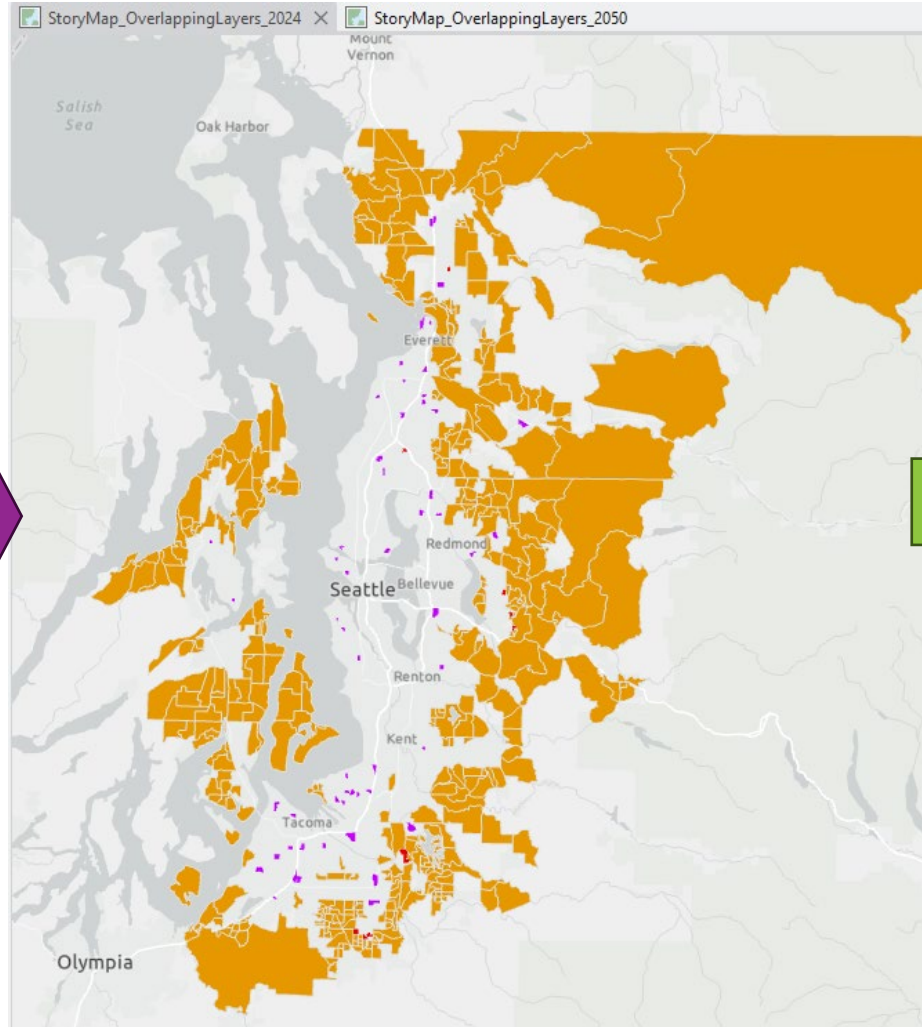
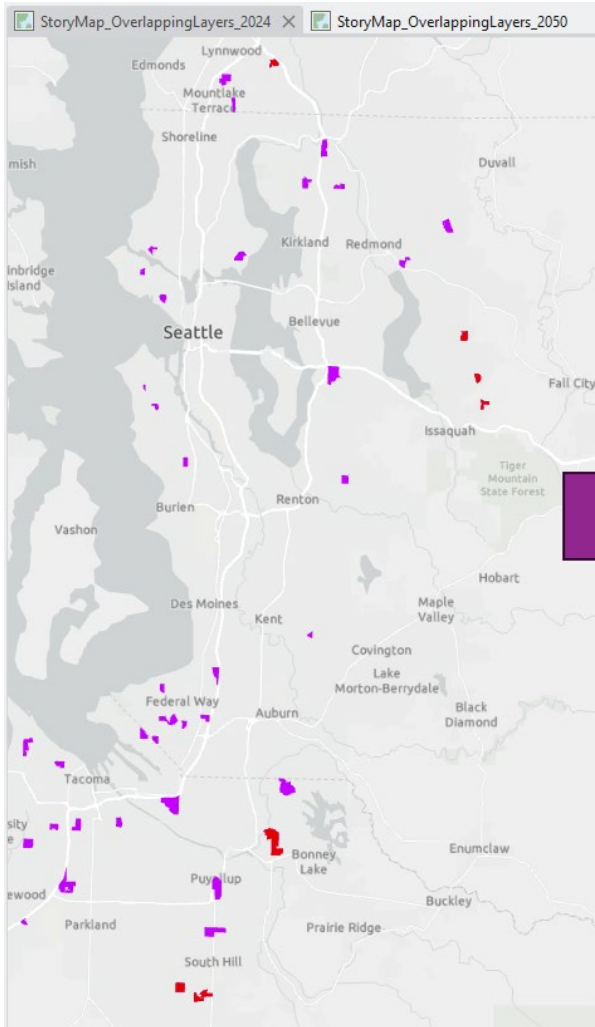


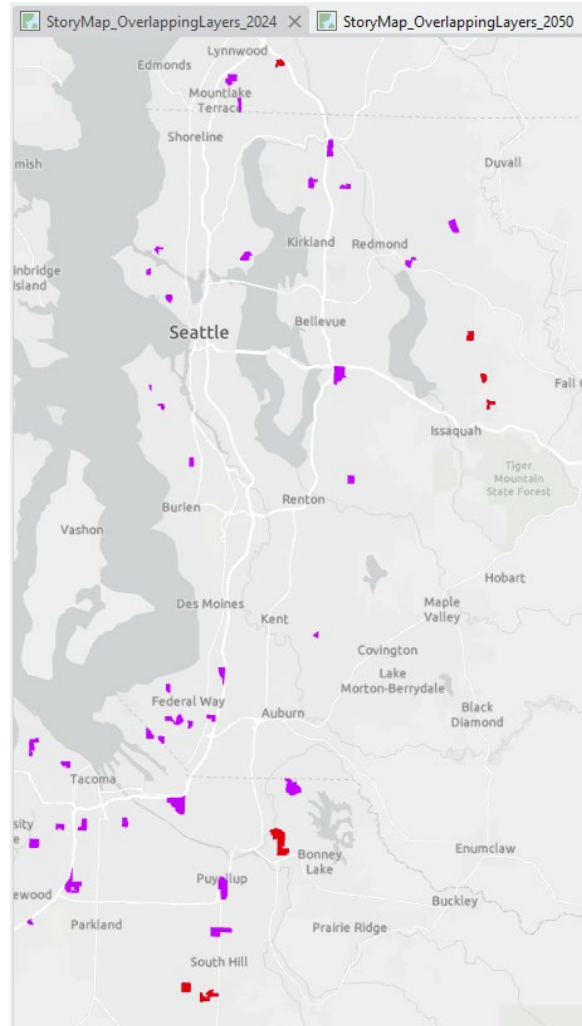
Illustration of layering transit access need factors into a regional typology (Existing System)



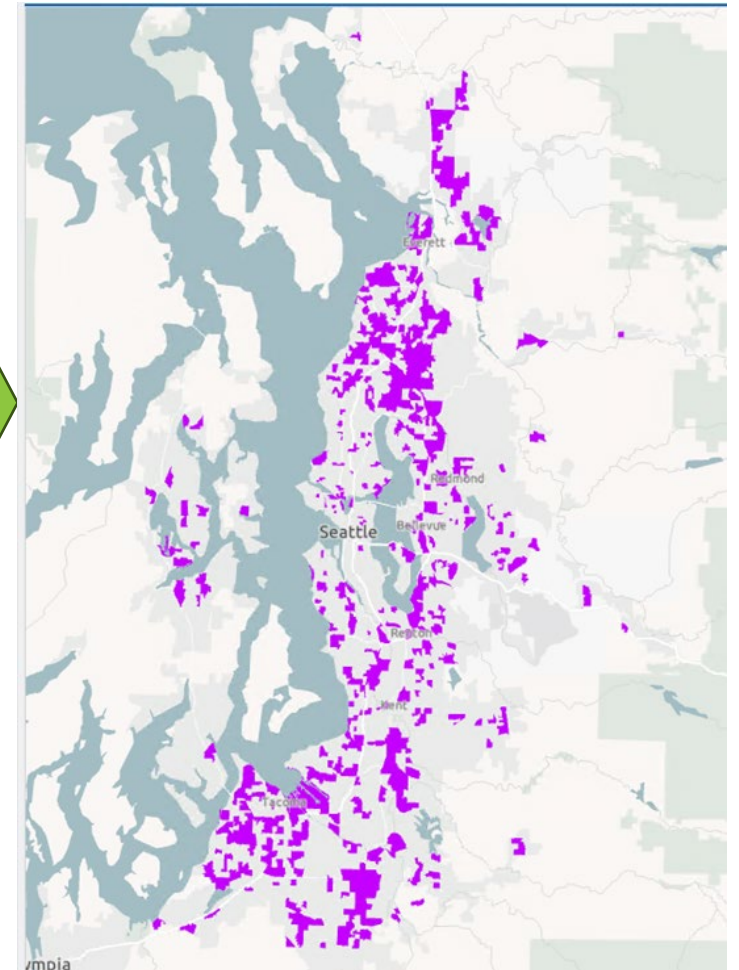
Incorporation of Regional Transportation Data

- Illustration accounting for density-transit service mismatches
 - Existing System includes small areas scattered throughout region
 - Planned 2050 System assumes VISION 2050 land use growth patterns. More widespread mismatch in densities compared to transit service.

Existing System



2050 System



Additional Elements

PSRC anticipates inclusion of:

- Guidance for how local data and knowledge can help pinpoint transit access solutions
- Further information on roles and responsibilities
- How community engagement can inform context-appropriate solutions to transit access needs.



Discussion and Next Steps

- Currently continuing work to develop Online Transit Access Tool (version 1)
- Anticipate roll-out of initial version in April-May
- Early summer incorporation of feedback from external users to inform version 2 release Summer 2026

- Questions?





Thank You!

Gil Cerise

Program Manager

gcerise@psrc.org



Puget Sound Regional Council