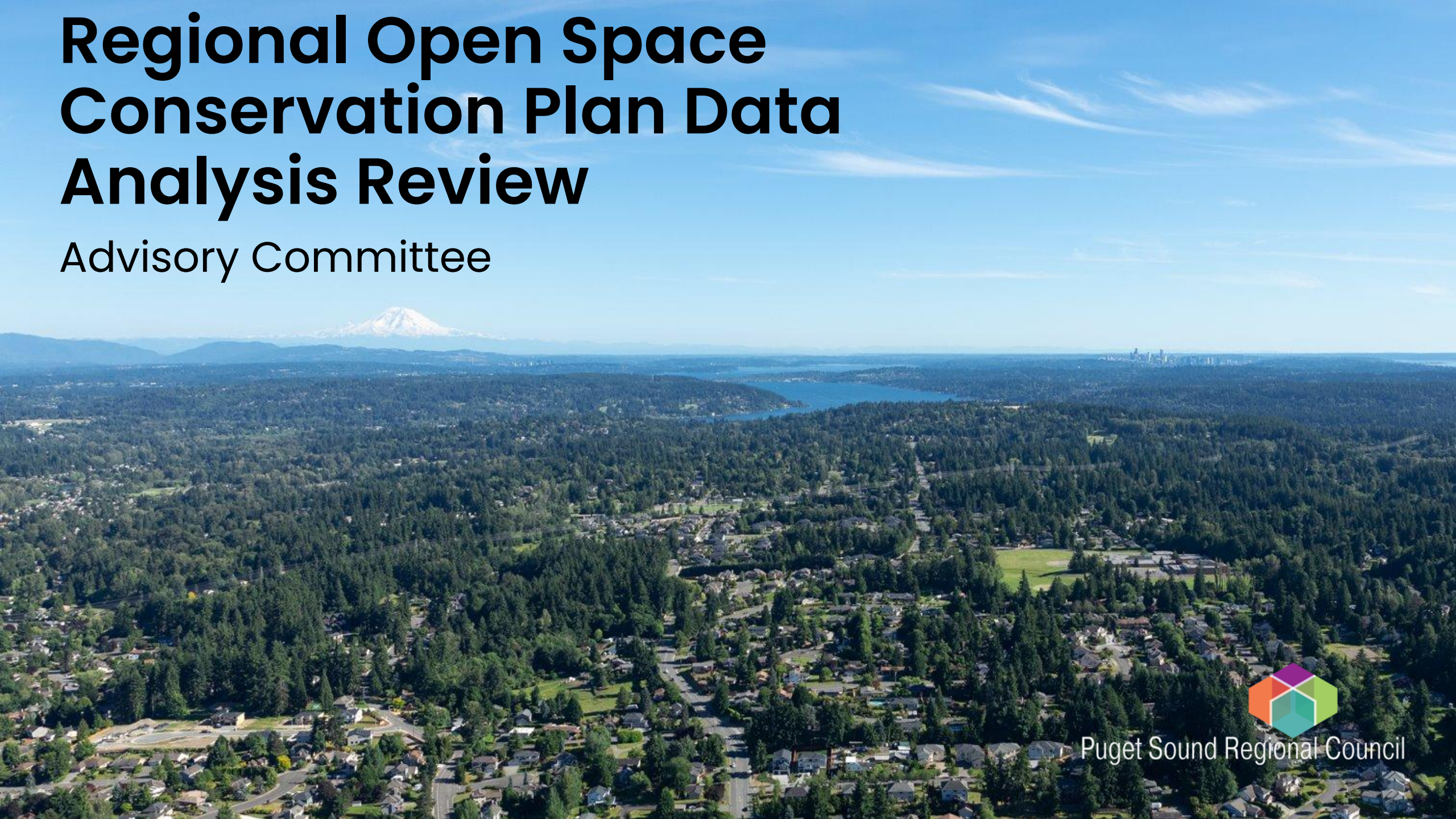


Regional Open Space Conservation Plan Data Analysis Review

Advisory Committee



Puget Sound Regional Council

Farmland Data Resources

- County assessor parcels with agricultural land uses
- Washington Dept of Agriculture's crop data
- National Conservation Service's Web Soil Survey (to identify prime farmland soil)
- County-designated agriculture areas (using future land use data)



Farmland Criteria

- County-designated agricultural areas
- Parcels with an agricultural use that are within a half mile of designated agricultural areas
- Parcels with an agricultural use that contain at least 5 acres of prime farmland soils



Working Forest Data Sources

- County assessor parcels with forestry-related land uses
- Parcels owned and managed by Washington DNR
- National forest land identified by the Northwest Forest Plan as available for harvest



Aquatic Systems Data Criteria

- Lands within a 100- or 500-year floodplain
- Lands within 200 feet of a river corridor important for salmon recovery (as identified by salmon recovery plans for each watershed resource inventory area (WRIA))
- Lands within 200 feet of a shoreline containing a feeder bluff
- Lands within 200 feet of a shoreline containing spawning areas for forage fish
- Lands supporting a source of drinking water
- Lands supporting a municipal watershed



Natural Lands Data Criteria

- Lands identified by WDFW as containing important habitat or species
- Regional parks, including state parks, wilderness areas, and national parks
- Public lands being managed for habitat and other ecological benefits
- County-identified biodiversity areas (Pierce County only)

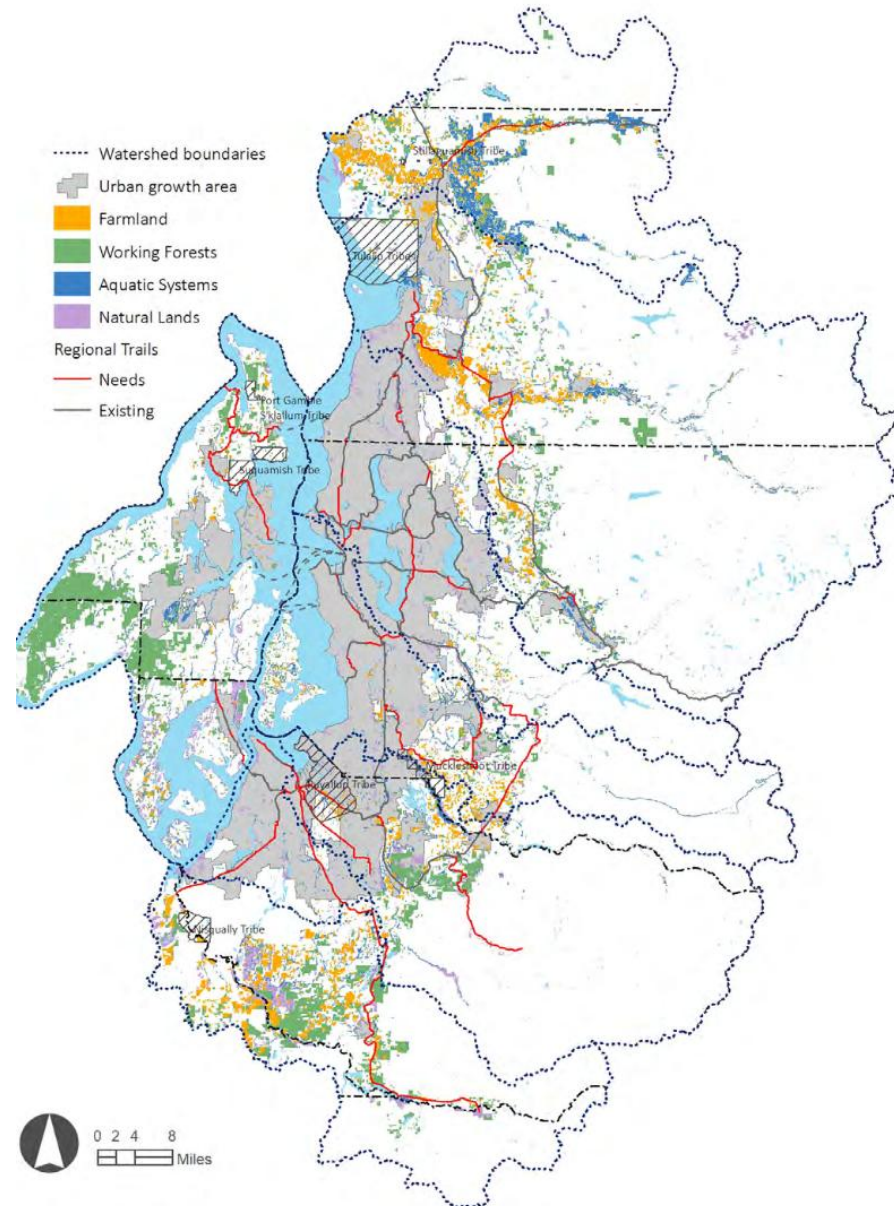


Lands in Long Term Protection

- Publicly owned/protected land
 - County assessor's data on parcel ownership
 - Lands currently in conservation (provided by counties)
 - DNR's Washington State Non-DNR Major Public Lands GIS layer
 - Forterra's Protected Lands Database
 - USGS 'Fee' Dataset
- Easements
 - USGS Easements
 - County collected Easements
 - American Farmland Trust Easements



Conservation Needs



Urban Open Space and Trails

- Updating PSRC's existing parks/urban open space dataset with additional recreational areas from NW Portal
- Trust for Public Land's ParkServe Tool
- PSRC's Regional Bike/Ped dataset
 - All ages and abilities
 - Connect regional destinations
 - Cross multiple jurisdictions



Discussion Questions



- Should any other criteria and data sources be considered?
- What are additional data sources to identify conservation progress or losses?



Thank You!

Drew Hanson

Senior Planner/GIS Analyst,
dhanson@psrc.org



Puget Sound Regional Council