

Regional Open Space Conservation Plan Update

Advisory Committee

April 14, 2026



Puget Sound Regional Council

Meeting Core Value: Take Space and Make Space

- We want to hear from **everyone**. Your experiences and insights are valuable for this process.
- If you usually hold back, speak up.
- If you tend to speak often, take a pause and allow others to share first.



VISION 2050 Supports Open Space

MPP-En-12: Conserve and enhance open space and update the Regional Open Space Conservation Plan

MPP-En-15: Provide walkable access to parks and trails and prioritize historically underserved communities

MPP-En-9: Enhance urban tree canopy to support community, environmental and economic health

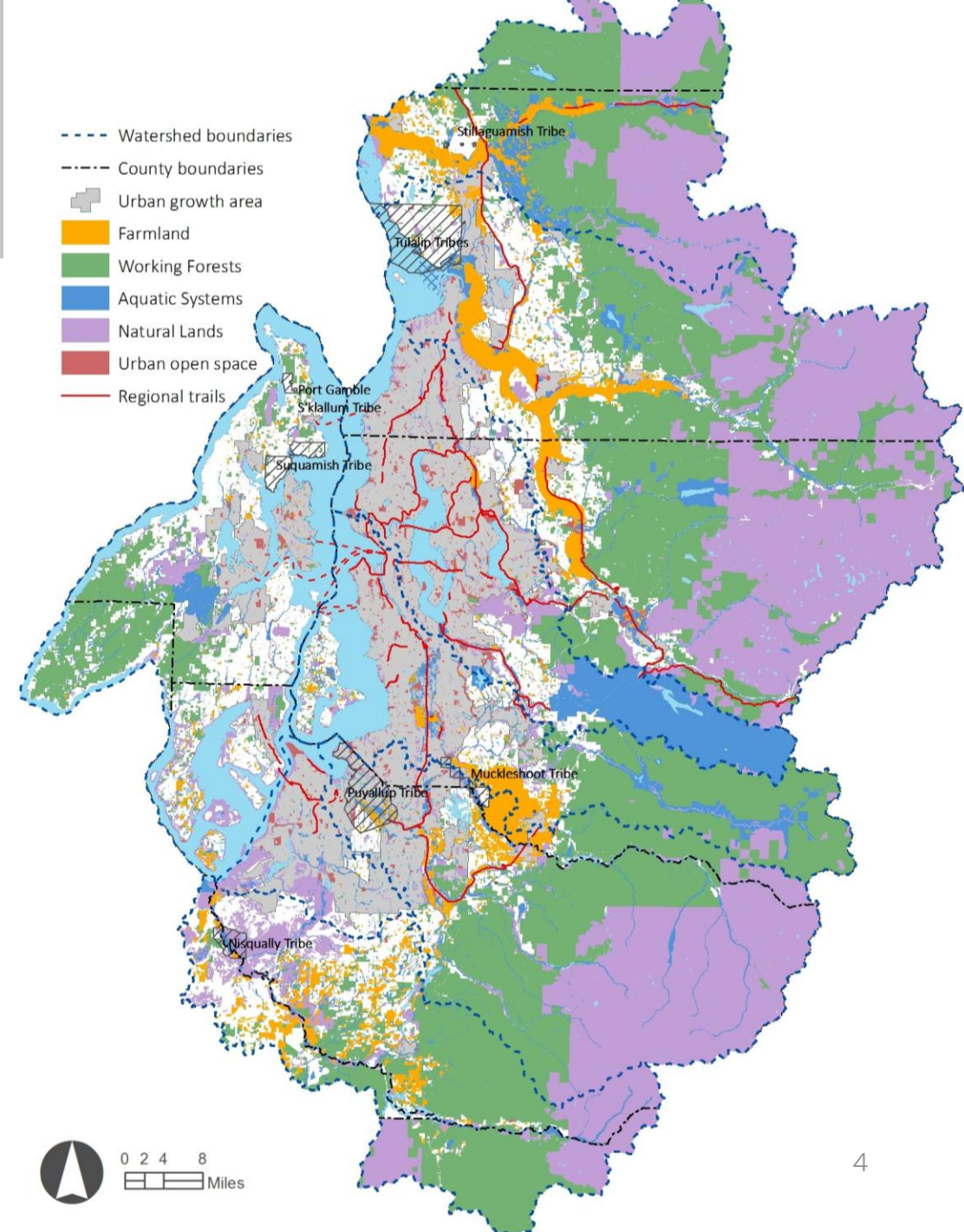


Regional Open Space Network

6 categories of open space:

- Farmland
- Working forests
- Aquatic systems
- Natural lands
- Urban open space
- Regional trails

[Regional Open Space Conservation Plan](#)

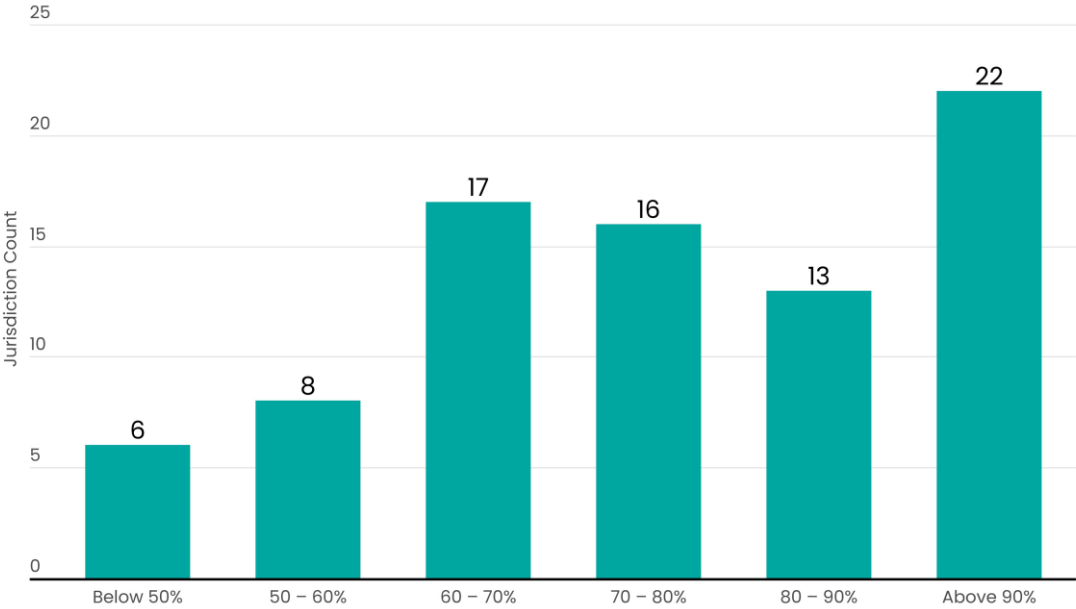


Urban Open Space

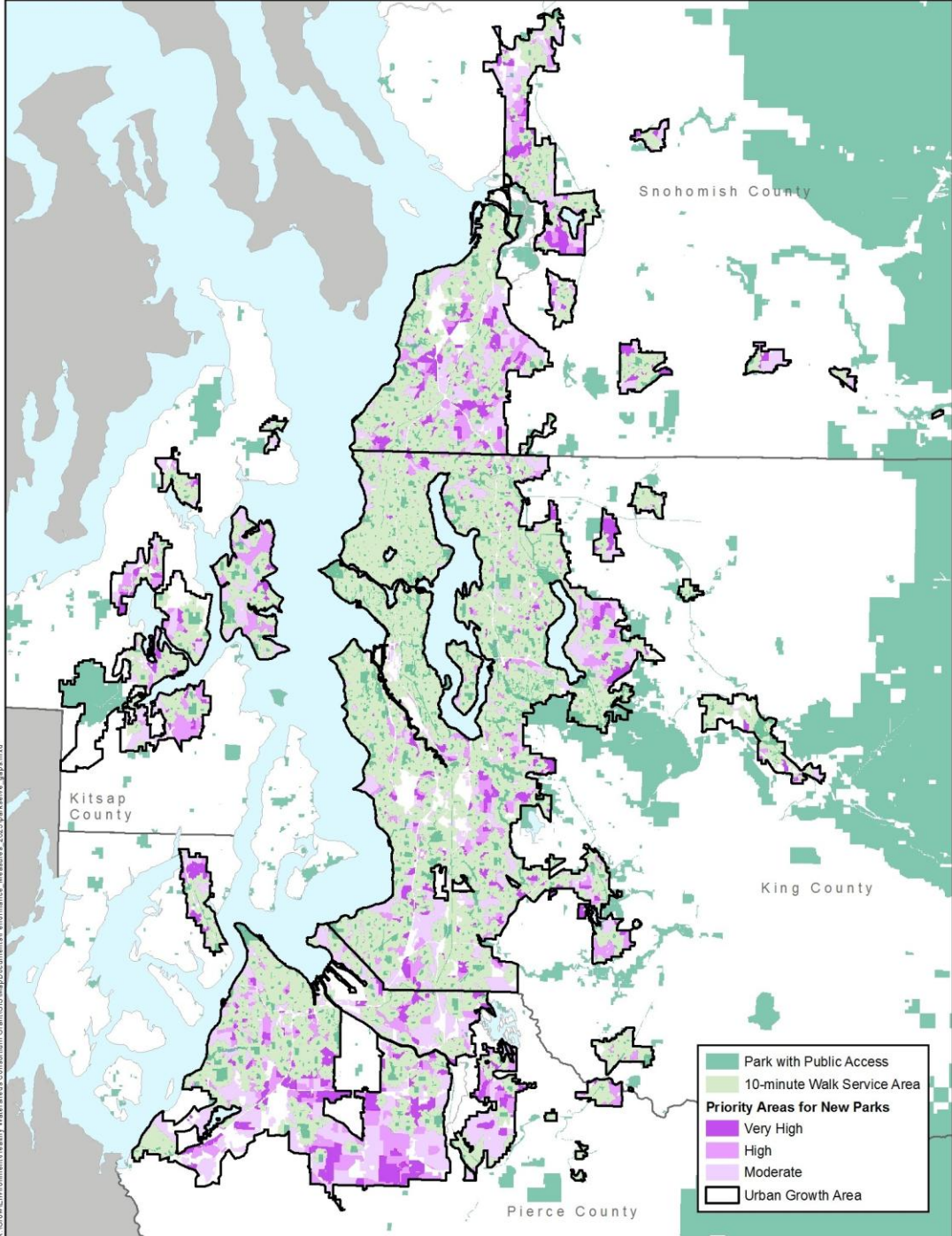
Goal: By 2050, all urban residents within a 10-minute walk of a park.

ParkServe: urban population within a 10-minute walk of a park: 72%

Cities by Percentage of Population Within a 10-Minute Walk of a Park



Data source: ParkServe, Trust for Public Land

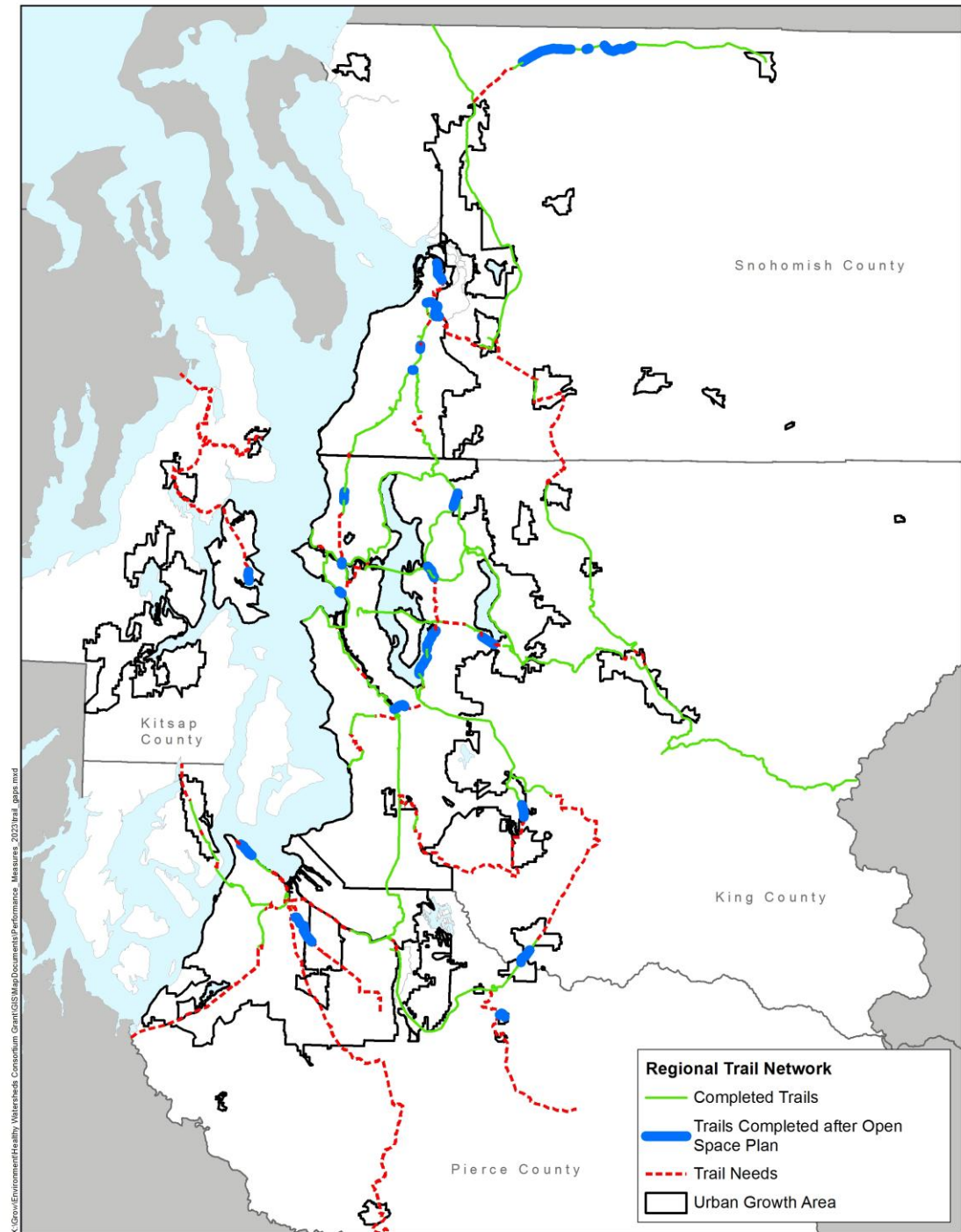


Regional Trails

Goal: By 2050, add 300 miles to the regional trail network

Since 2018, 30 miles added to the regional trail network. Examples:

- Mountains to Sound Greenway Trail in King County
- Sound to Olympics Trail in Kitsap County
- Pipeline Trail in Pierce County
- White Horse Trail in Snohomish County

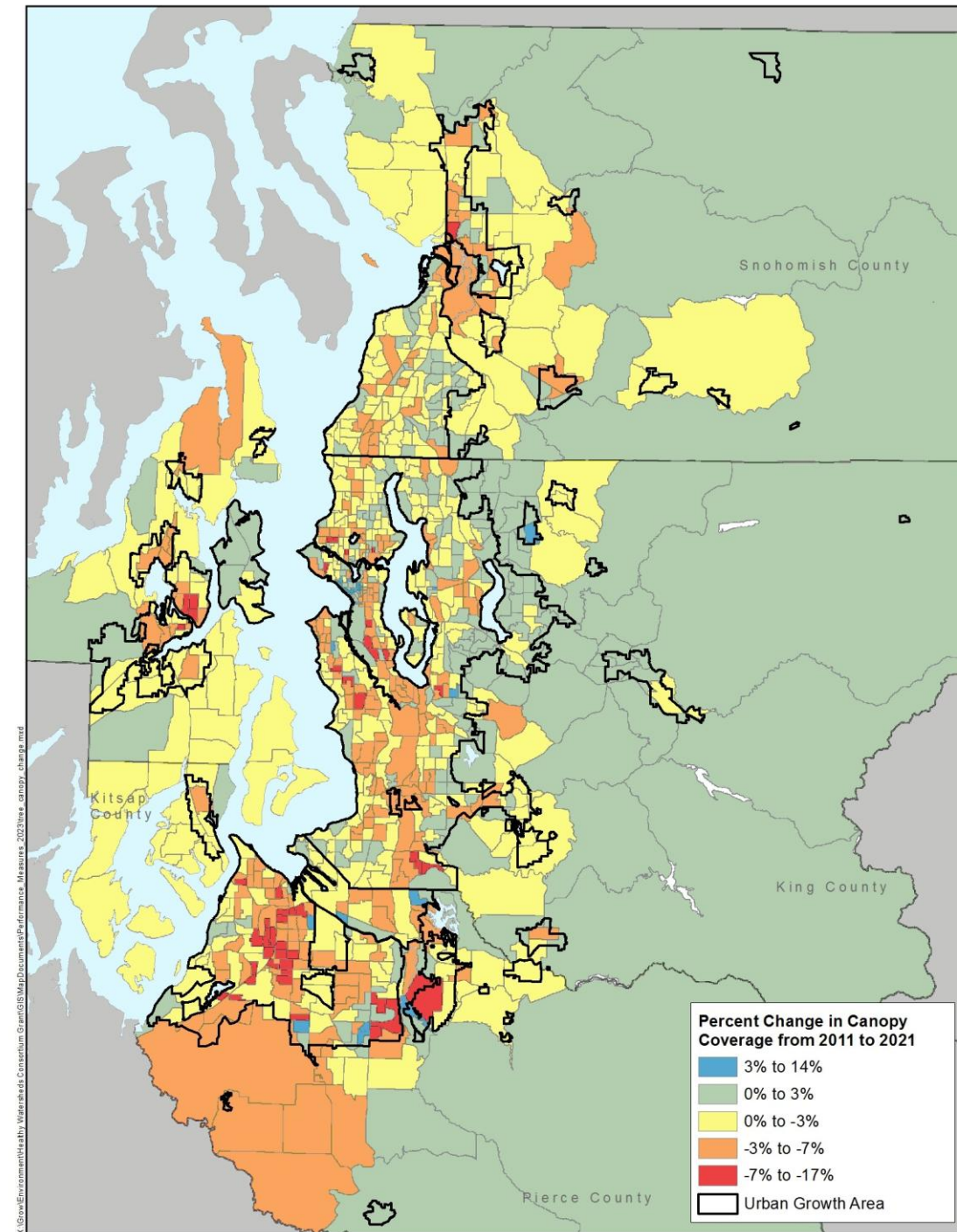


Tree Canopy Cover

Goal: By 2050, tree canopy cover in region remains at 2018 levels. By 2050, it will increase in the regional open space network.

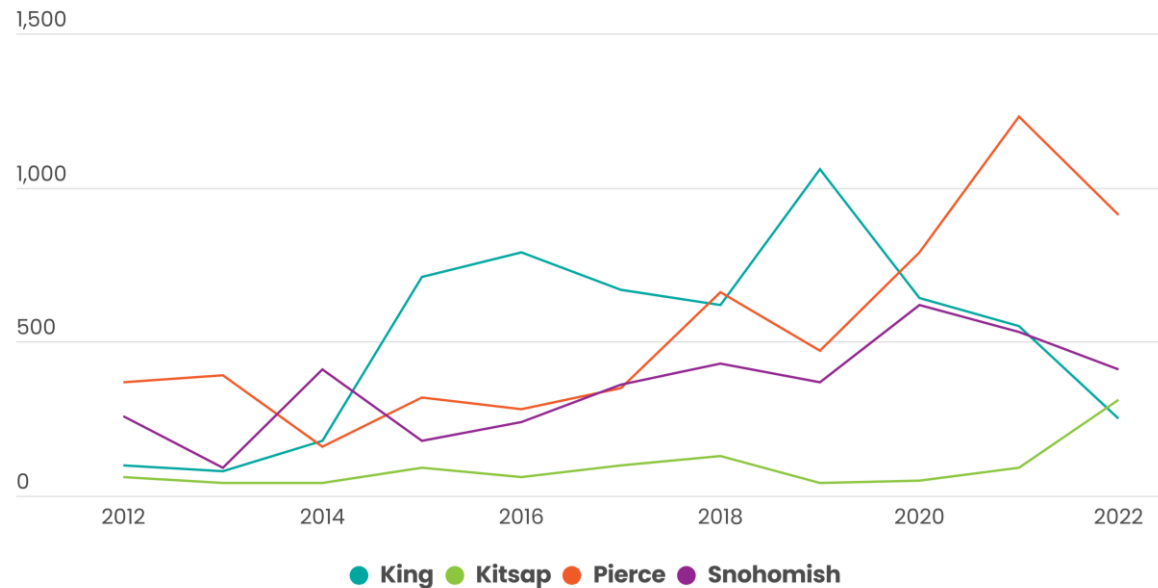
Tree canopy cover change 2011–2021:

- Region: no change
- Urban: decrease of 3%
- Regional open space network: no change



New Housing Units in the Open Space Network

Net new housing units on farmland, working forests, aquatic systems, and natural Lands: 16,460 added on lands in the regional open space network (2012–2022). 81% in urban growth areas.



Data source: County Assessment Data, Snohomish County PUD, PSRC



Urban Growth

2012–2022 housing development in urban growth areas:

- Region: 95%
- King: 99%
- Kitsap: 73%
- Pierce: 88%
- Snohomish: 92%



Community Engagement



Key partners in plan development:

- PSRC boards and committees
- County staff
- Advisory committee
- Tribes
- Environmental Resource Agency Coordination Group
- Land conservancies



Community Engagement

- Community events
 - Farmers market in each county
 - Festival in each county
- Photo challenge
- Engagement hub and survey
- Forums
 - Puget Sound Partnership Local Integrating Organizations
 - Countywide planning groups
 - Countywide park director groups
- Subject matter expert interviews



What We've Heard So Far

- Address importance of increasing both **housing** and **tree canopy**
- Look for opportunities to **grow food** in urban areas, such as community gardens
- Consider access to **water** for recreation
- Engage the **Summer Planning Academy** in open space issues
- Discuss new opportunities with **transfer of development rights**
- Align with the state **Recreation and Conservation Office**
- Integrate **wildlife corridors** into plan
- Explore using **rights of first refusal**

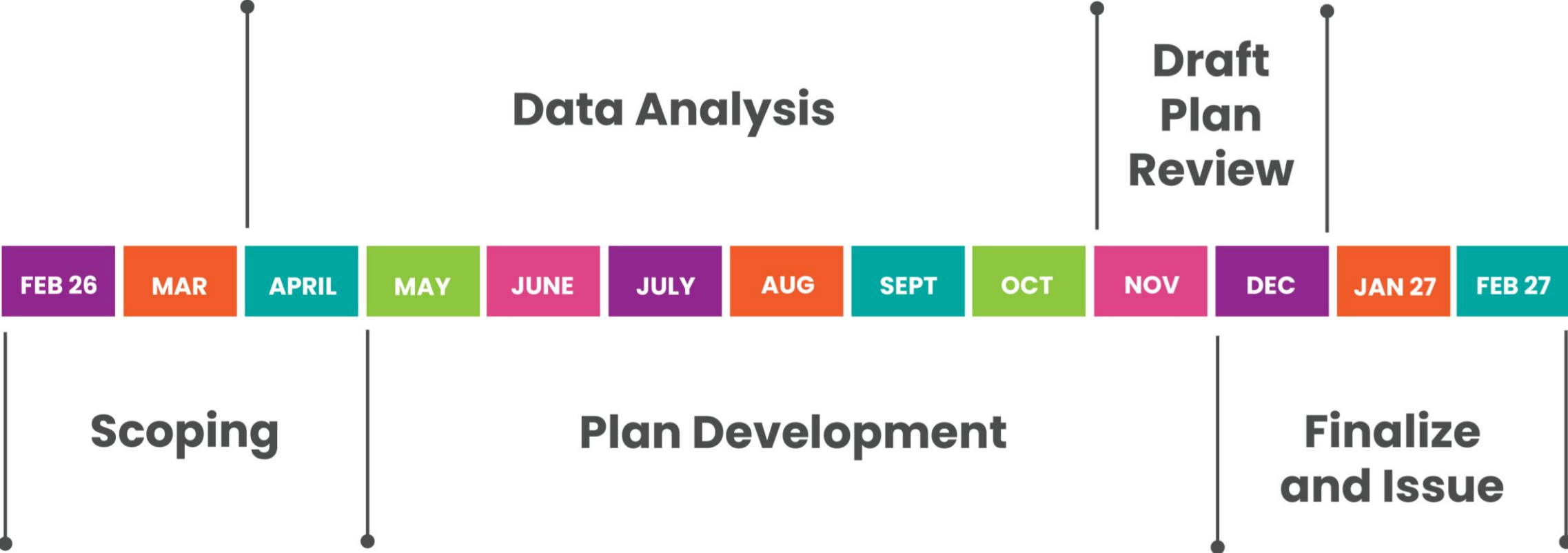


What We've Heard So Far (continued)

- Discuss conservation futures **levy lid lift**
- Calculate savings of **conserving land sooner** on regional scale
- Identify open space lands in **multiple categories** to help with prioritization
- Address flooding, heat and other **climate impacts**
- Identify **funding resources** for urban parks, trails and other open space
- Examine **trail** connectivity gaps and nonmotorized access to parks
- Look at **maintenance/stewardship** costs
- Recognize **outdoor recreation economy**



Open Space Plan Update Schedule



Discussion Questions



- What in the plan could be **improved**? What new topics or analyses should be included in the update?
- How could the plan more thoroughly address **equity**?
- Do you have any suggestions for **engagement** for the plan update or for subject matter experts to interview?



Thank You!

Erika Harris, AICP

Senior Planner,
eharris@psrc.org



Puget Sound Regional Council