



2026 Rural Town Centers
& Corridors Program
Application

City of Orting
Whitehawk Extension

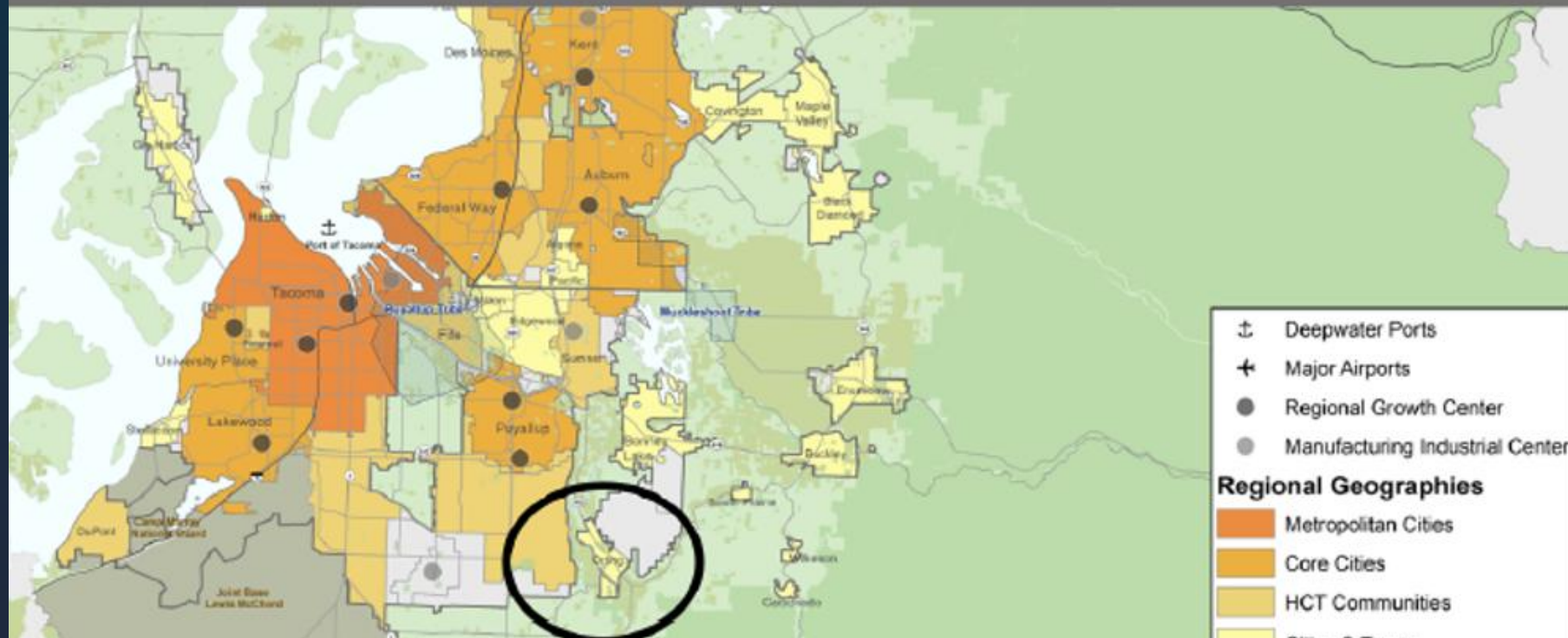
PSRC RTCC - May 6th, 2026



WHITEHAWK BOULEVARD EXTENTION

Funding for right of way

\$750,000 RTCC FUNDS



Orting Wa. 1993



The Population approximately 3000



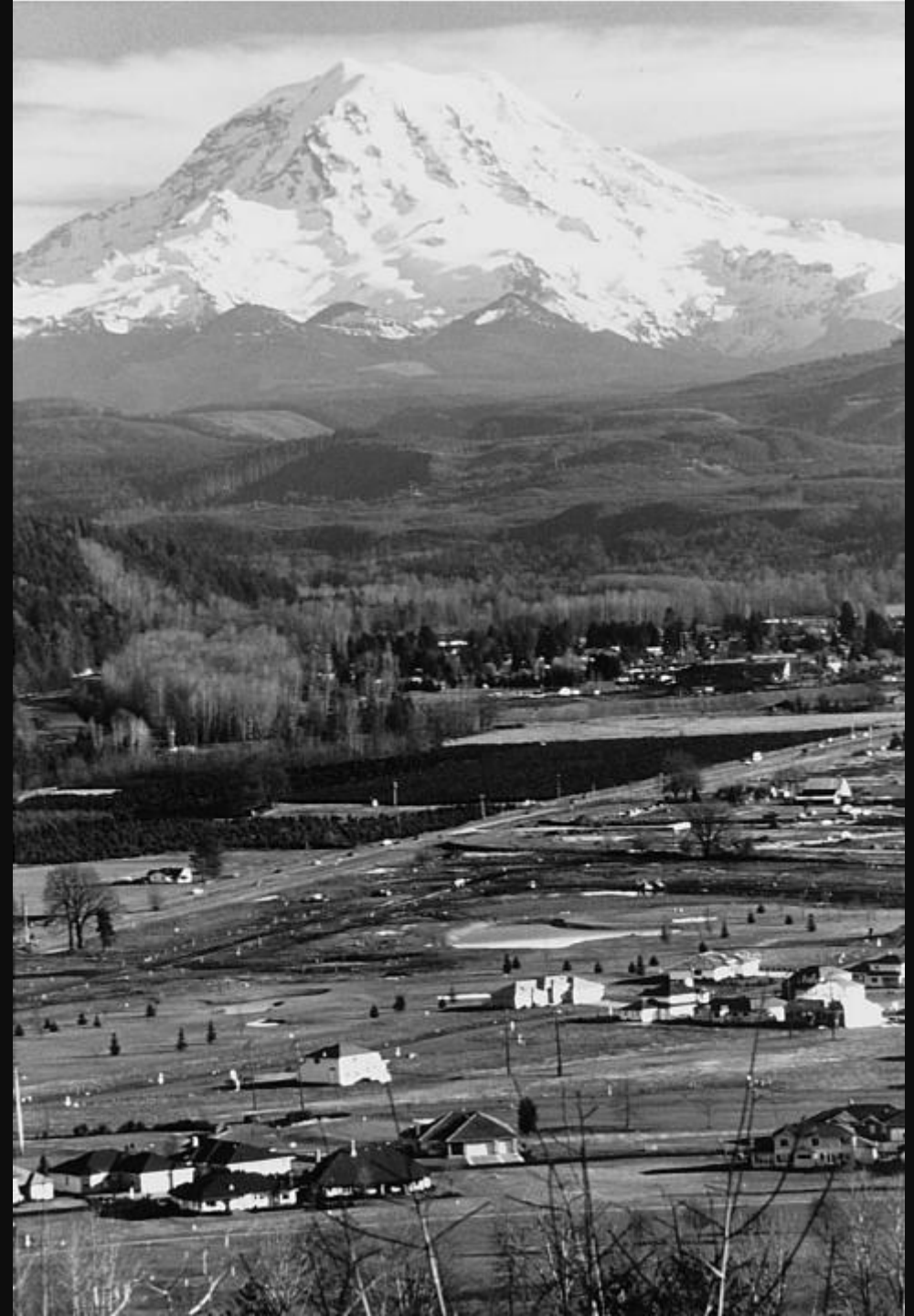
An agriculture community in transition to Bedroom community.



The Urban Growth Act recognized the need to plan for future growth. Orting was a leader initiating a plan for the future.



Pierce county presented 6 Transportation Routes to bypass future growth around Orting for those traveling outside Orting.



Orting Wa. 2026

- Population City of Orting approaching 10,000 residents.
- Pierce County second highest population in the state 946,000
- Nearly all proposed Bypass Routes from 1993 corridor study are no longer possible due to development in the valley.
- **One Alternative Remains the “Whitehawk Extention”**

The City Alternative Analysis Selects Whitehawk Extention



2008, Public Hearings to not only own the problem, but to also be lead in the solution.



Included it in the Comprehensive plan.



Partnered with PSRC RTCC recognizing the regional transportation, economic value for the “Town Center” and Public Safety value as part of a Lahar Evacuation pedestrian route. The PSRC invested \$346,000



2009 the City purchased two properties allowing for a transportation hub connection to the Whitehawk extension.

Regional Plans

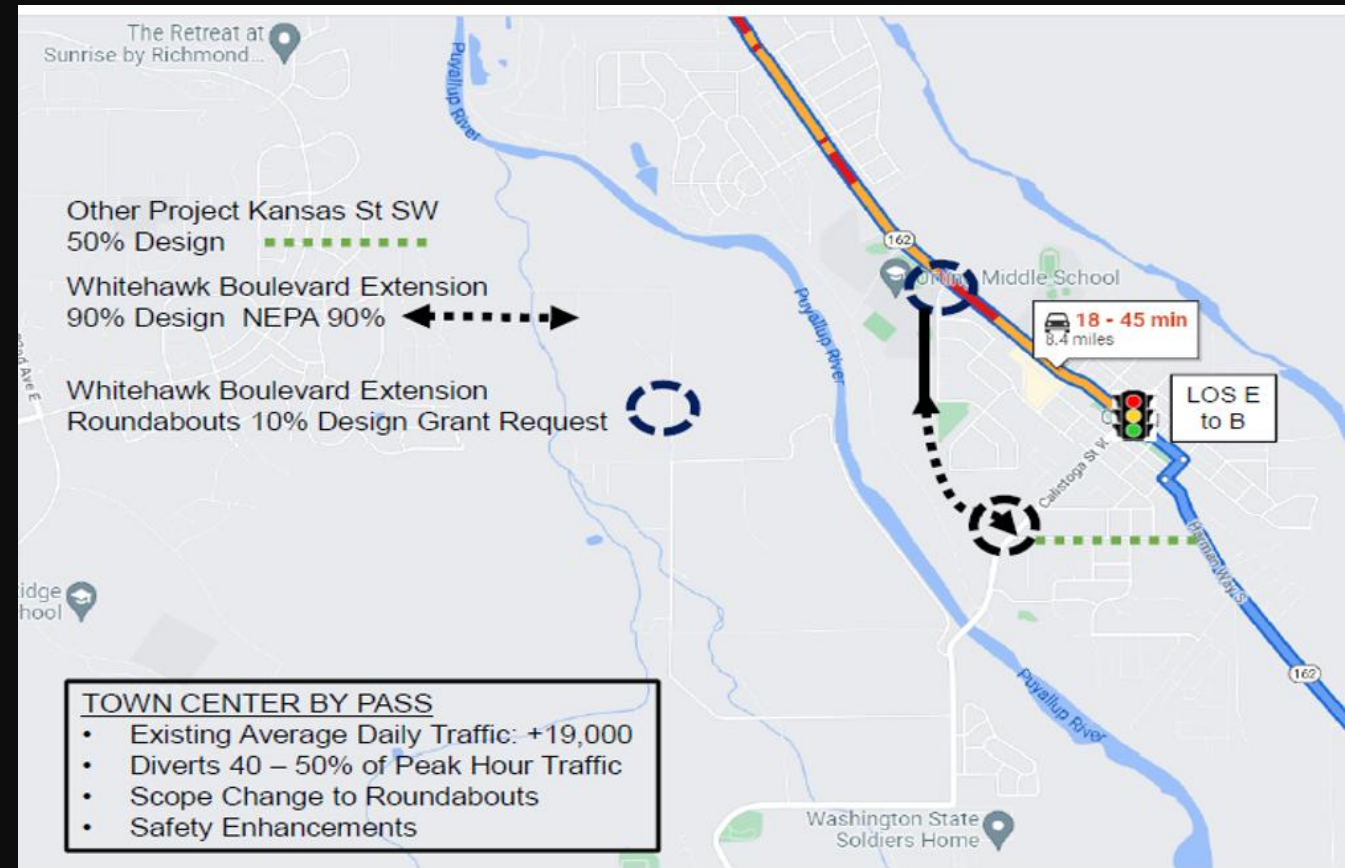


Regional Impact with a Local Solution

- Regional growth impacts our City. Growth outside the Orting Valley.
- Growth within the City of Orting
- All Roads Lead to Orting

Whitehawk Extension Link to Orting's Future Project Description

- The project will create a connector roadway linking SR162/Calistoga St. and Kansas by extending Whithawk Blvd.
- Optimize safety and traffic flow with roundabouts to allow for directional vehicle movement.
- Upgrade the cities Storm, Water and Sewer sytems.
- Mitigate wetland with flood compensatory storage
- Single lane for each direction with enhanced 8ft sidewalk and center planter strip.



How will the PSRC RTCC Support the Project

- Land Accusation, the grant will be applied to secure land for the Right of Way.
- Land located between Whitehawk BLVD and Calistoga is privately owned.
- **Risk:** If the property is not secured the property may be loss to development.





Thank you from Orting!