

SNOHOMISH COUNTY, WASHINGTON

Rural Town Centers and Corridors

S. MACHIAS RD AND THREE LAKES RD INTERSECTION IMPROVEMENTS

Jurisdiction/Lead Agency:

Snohomish County Public Works

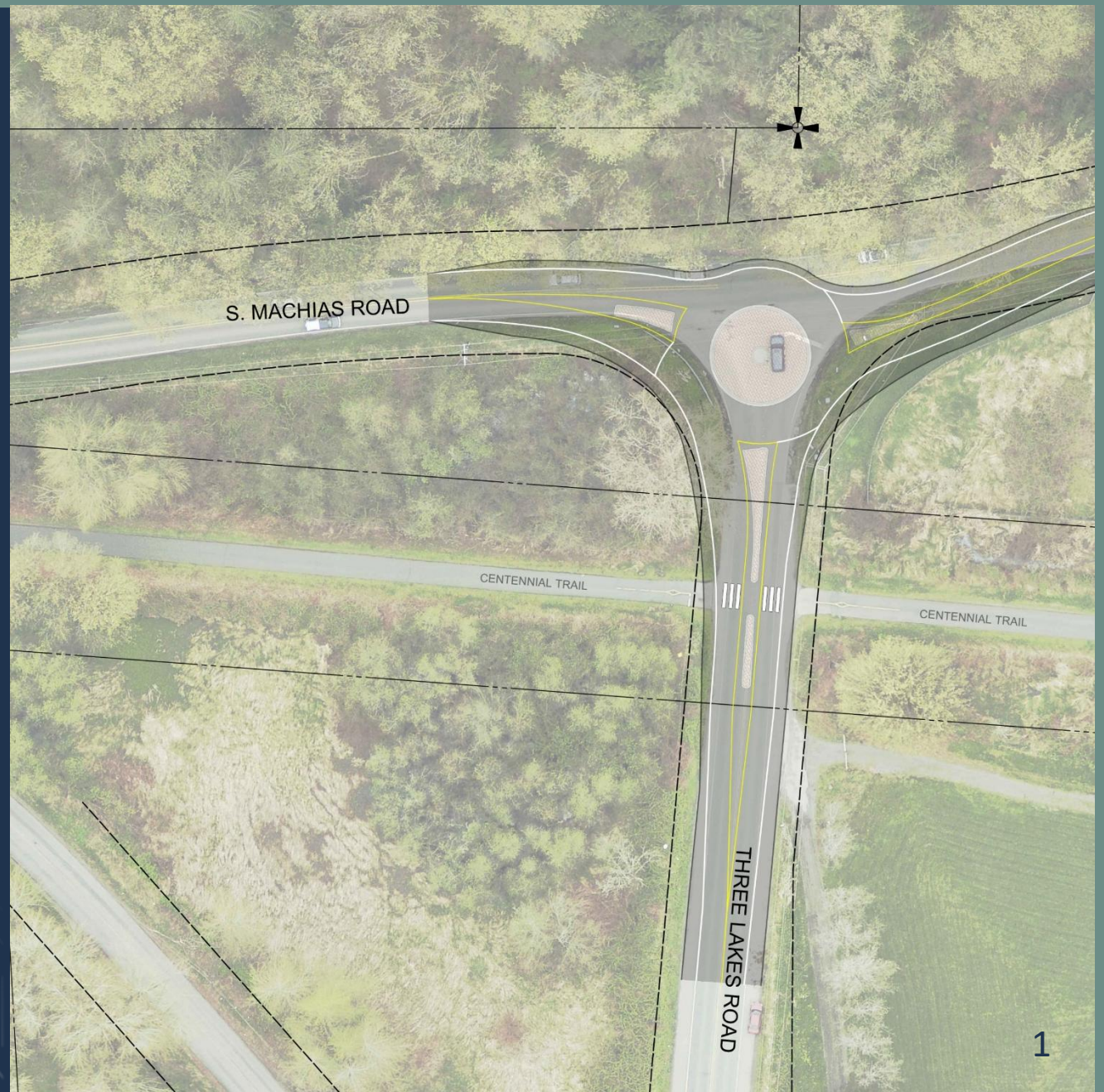
RTCC Funding Request for 2028:

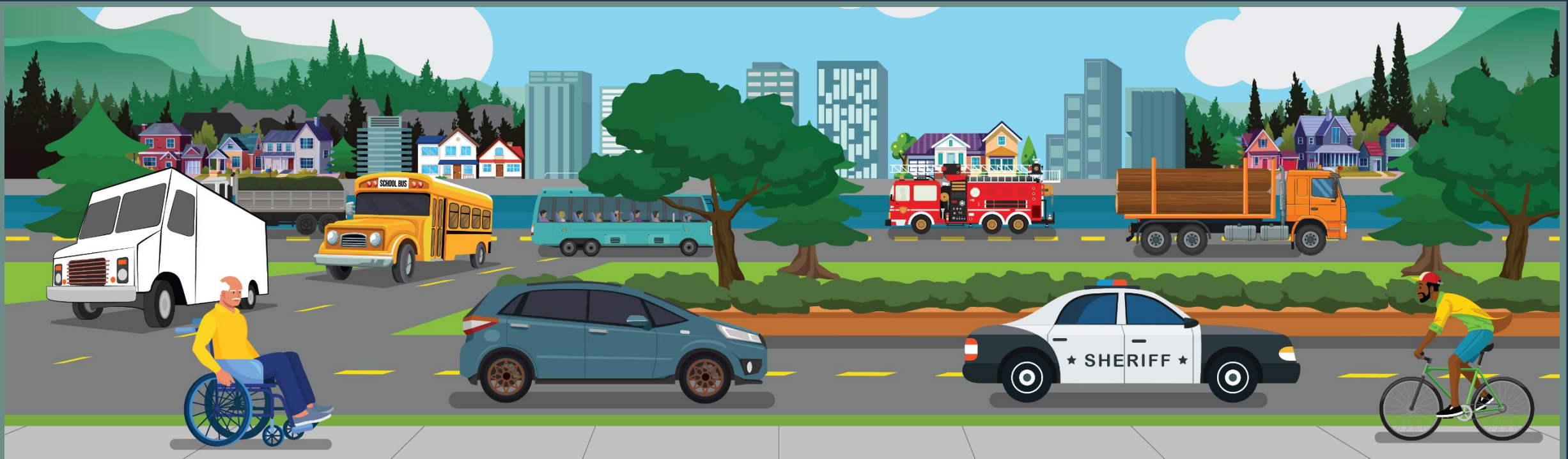
\$316,335 (Right-of-Way Phase)

Contact:

Mike Randall, P.E., Snohomish County

Michael.Randall@snoco.org | 425.388.6642





IMPROVED SAFETY, ACCESS, AND RURAL CONNECTIVITY ON S. MACHIAS ROAD

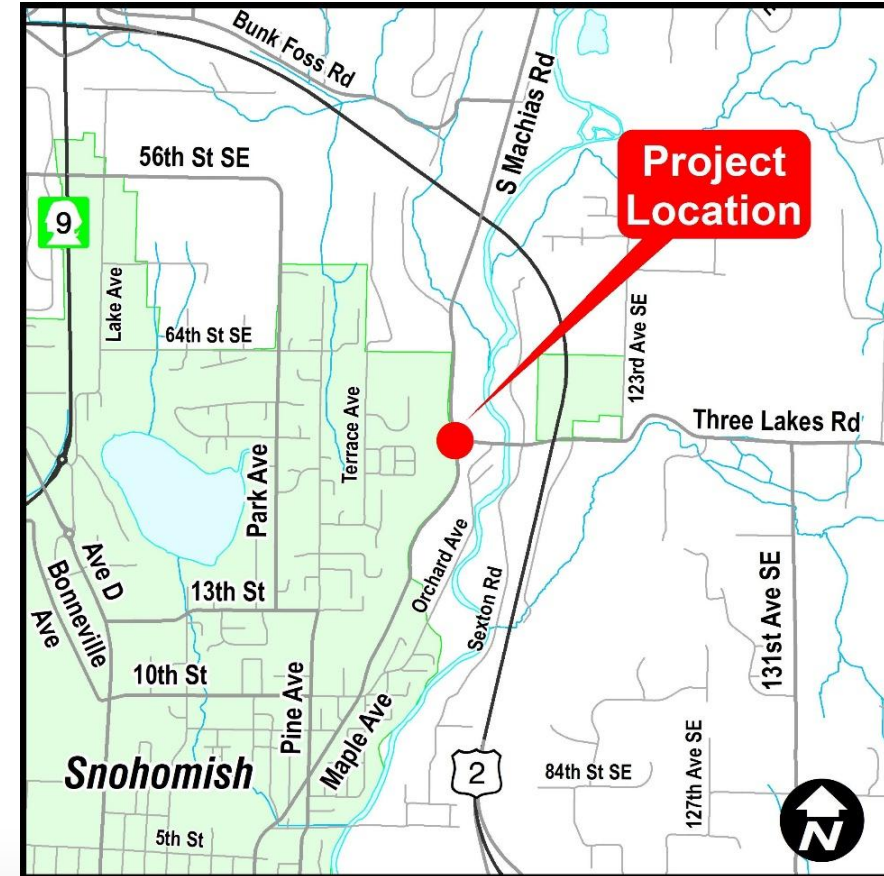
PROJECT PURPOSE

- ▶ Improve safety and multimodal operations at rural intersection
- ▶ Improve corridor serving Machias rural residents and connecting to Snohomish and Monroe rural town centers
- ▶ Serve commuters, freight, school buses, and trail users
- ▶ Advance fully designed capital project toward construction



CONNECTING RURAL COMMUNITIES TO REGIONAL DESTINATIONS

- Rural minor arterial serving Machias area and connecting to Snohomish and Monroe rural town centers
- Access to employment, health care, education, and services
- Supports school transportation and freight movement
- Access to Centennial Trail regional facility – 400K users annually



SOURCE: Snohomish County Comprehensive Plan (Transportation Element); PSRC Guidance for RTCC Eligibility; Snohomish County Parks Department



MIXED RURAL TRAVEL AT A CONGESTED INTERSECTION

- Multiple users: residents, freight, school buses, trail users
- Left-turn and crossing conflicts
- Limited gap availability during peak periods
- Delay and queuing at key movements



SOURCE: U. S. Census Bureau (2020 population data); Sandy Williams Connecting Communities (SWCC) Viewer



DOCUMENTED SAFETY RISK

- 198 crashes (2010–2018 corridor segment)
- Crash clustering at intersection node
- Rear-end and turning movement dominance
- Snohomish County Road Safety Plan (April 2022) and S. Machias Rd Corridor Study Safety Needs and Recommended Treatments (2019) identify persistent risks



SOURCE: Snohomish County Road Safety Plan (April 2022); S. Machias Rd Corridor Study Safety Needs and Recommended Treatments (2019)



CONSEQUENCES OF INACTION

- Continued crash exposure at intersection node
- Unreliable rural travel times
- Freight and school transportation delay
- Centennial Trail user exposure at crossing
- County-prioritized investment necessary for planned growth and infrastructure needs



SOURCE: Snohomish County Comprehensive Plan, Transportation Element (TE), Chapter 9, pg. 112, Project No. IN-013



PROJECT SCOPE: COMPACT ROUNDABOUT AND SAFETY IMPROVEMENTS FOR WALKING, ROLLING, AND BIKING

- Compact roundabout replaces existing intersection
 - Reduces conflict points and vehicle speeds
- Enhances Centennial Trail crossing safety –
 - Improved configuration and visibility
- Requires 4 parcel partial ROW acquisitions



Present state of project



Future state of project

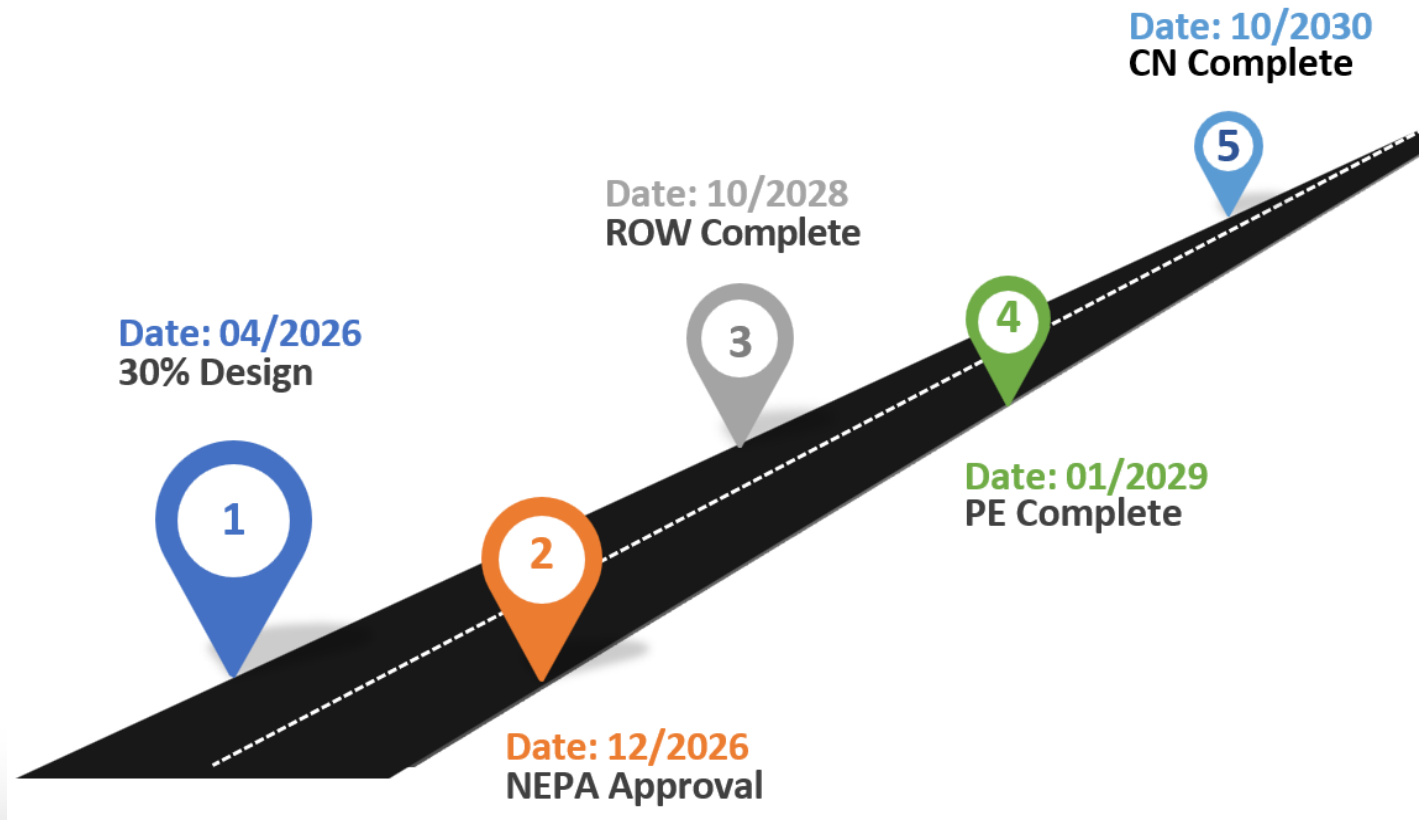
PROJECT BUDGET

Phase	Cost
PE (Design/Environmental/ROW Planning)	\$271,000
ROW (4 partial acquisitions)	\$365,705
CN (Construction)	\$1,517,000
TOTAL	\$2,153,705

RTCC Funding Request for 2028: \$316,335 (Right-of-Way Phase)



PROJECT READINESS AND SCHEDULE



SAFETY, MOBILITY AND EQUITY BENEFITS



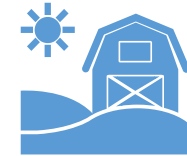
Reduced crash severity through speed reduction



Improved freight and commuter operations



Safer Centennial Trail crossings



Improved rural access equity



SOURCE: Snohomish County Comprehensive Plan (TE); Snohomish County Road Safety Plan (2022); S. Machias Rd Corridor Study Safety Needs and Recommended Treatments (2019); PSRC RTCC Program Guidance

SNOHOMISH COUNTY, WASHINGTON

Rural Town Centers and Corridors

S. MACHIAS RD AND THREE LAKES RD INTERSECTION IMPROVEMENTS

Jurisdiction/Lead Agency:

Snohomish County Public Works

RTCC Funding Request for 2028:

\$316,335 (Right-of-Way Phase)

Contact:

Mike Randall, P.E., Snohomish County

Michael.Randall@snoco.org | 425.388.6642

