

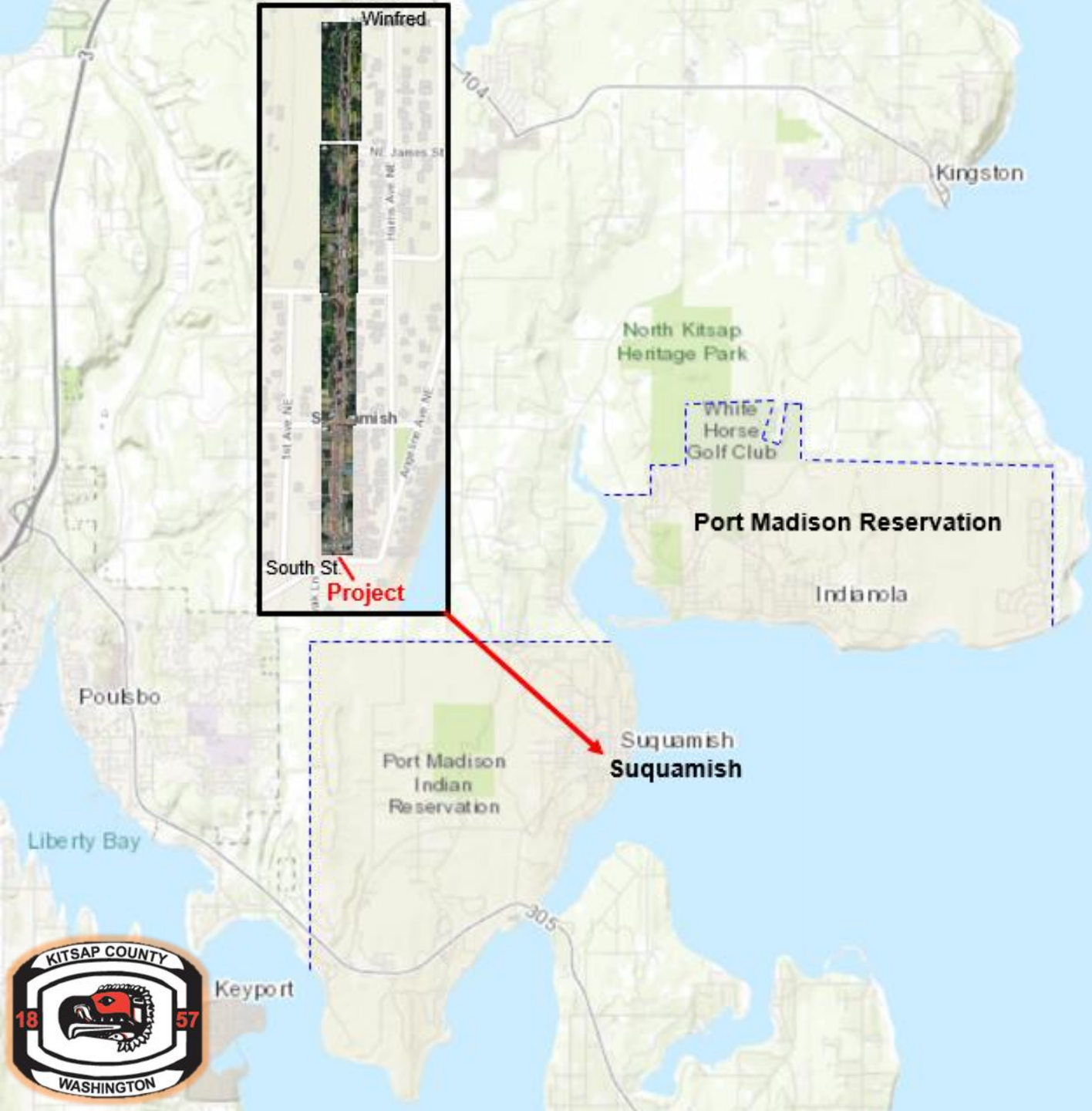
Suquamish/Augusta – South St. to Winfred

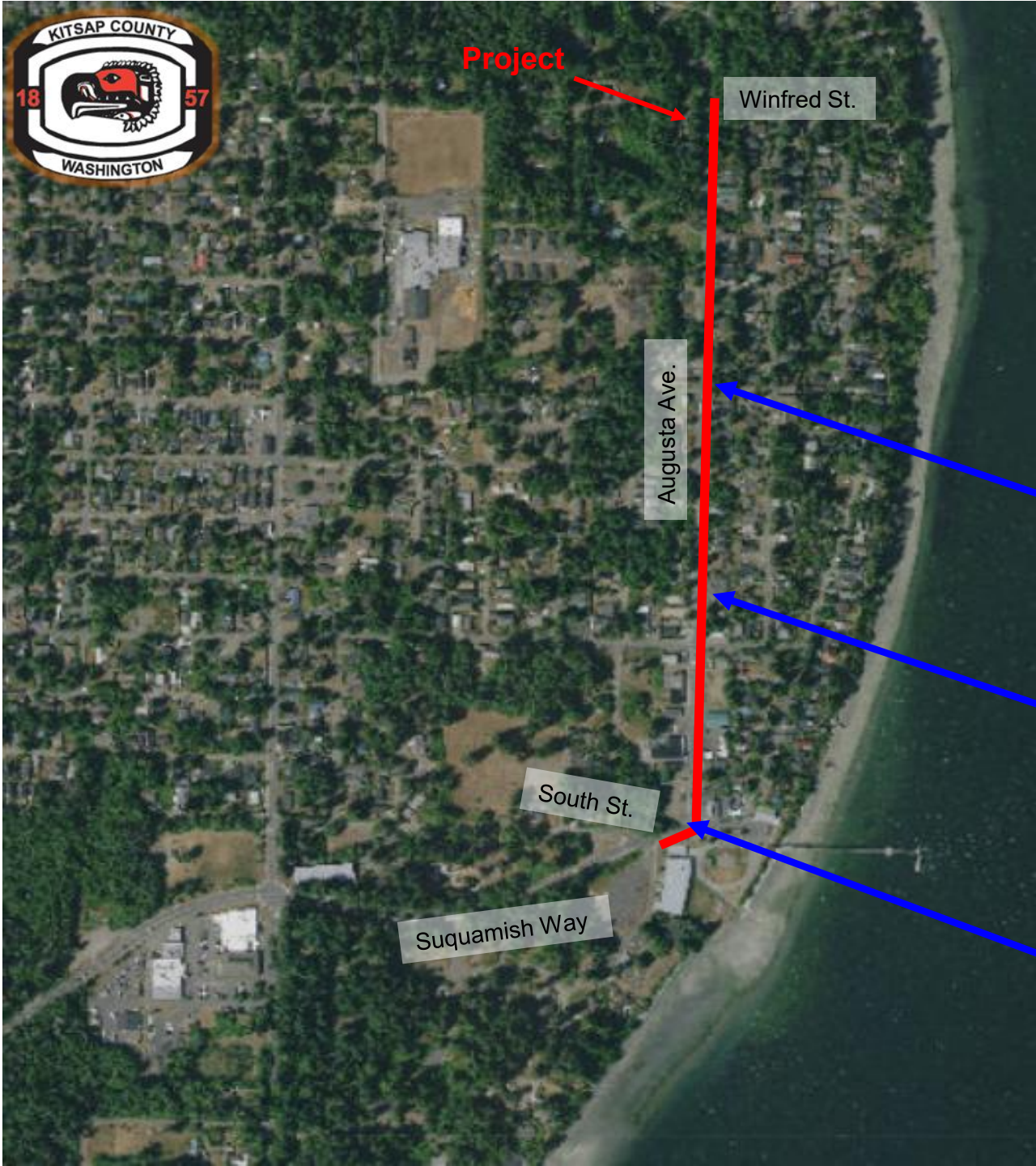
Suquamish,
Kitsap County



Suquamish

- Suquamish Tribe – Port Madison Reservation
- Local Area of More Intensive Rural Development (LAMIRD)
- Suquamish Way – Augusta – Miller Bay Rd. corridor major connector to:
 - Kingston
 - Indianola
 - Four Corners
 - Hansville
 - Suquamish Tribe
 - Port Gamble S’Klallam Tribe
 - Poulsbo & Bainbridge Island

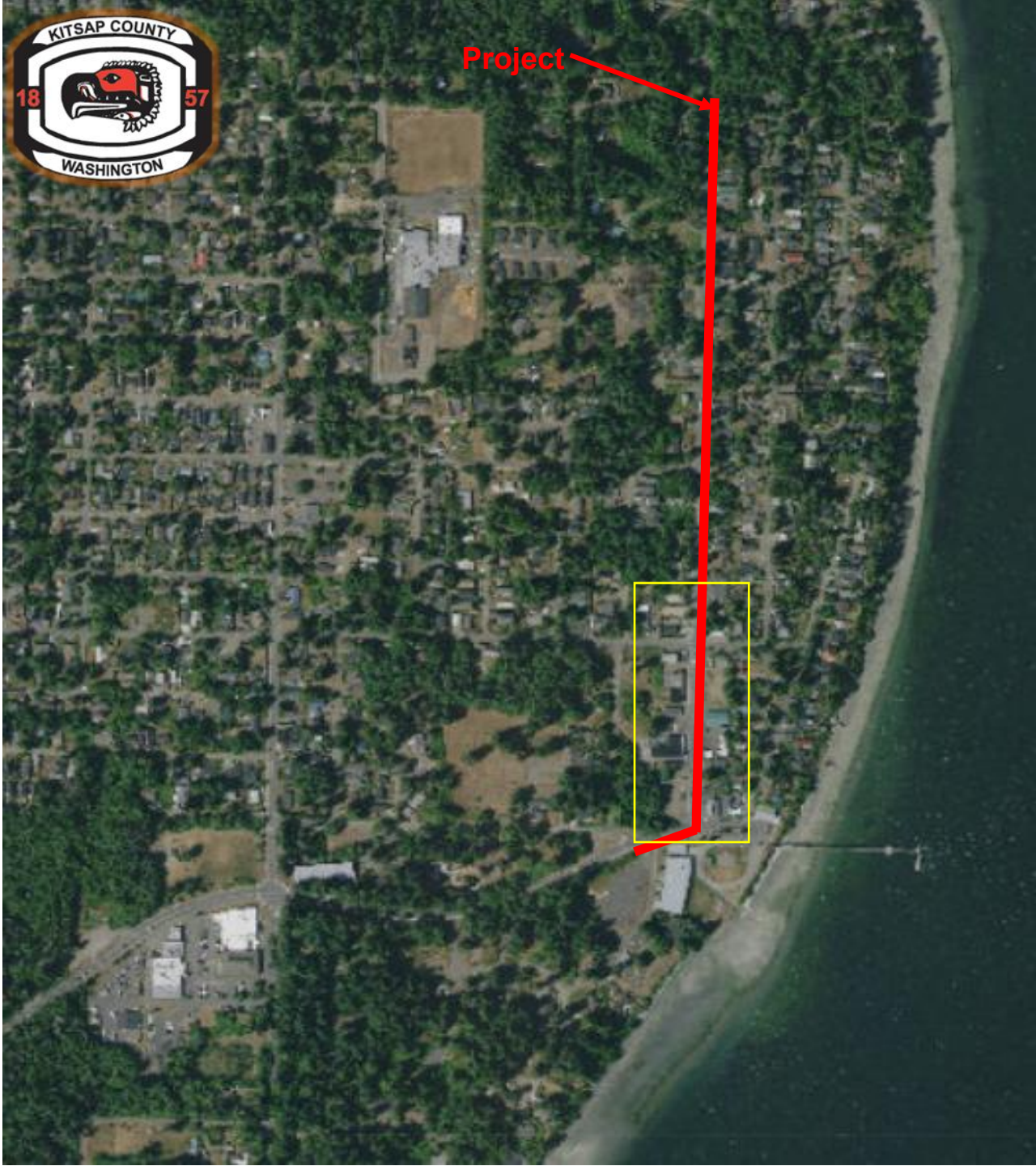




Suquamish

- Suquamish/Augusta – South St. to Winfred
- Approx. 2,800' – Existing Conditions





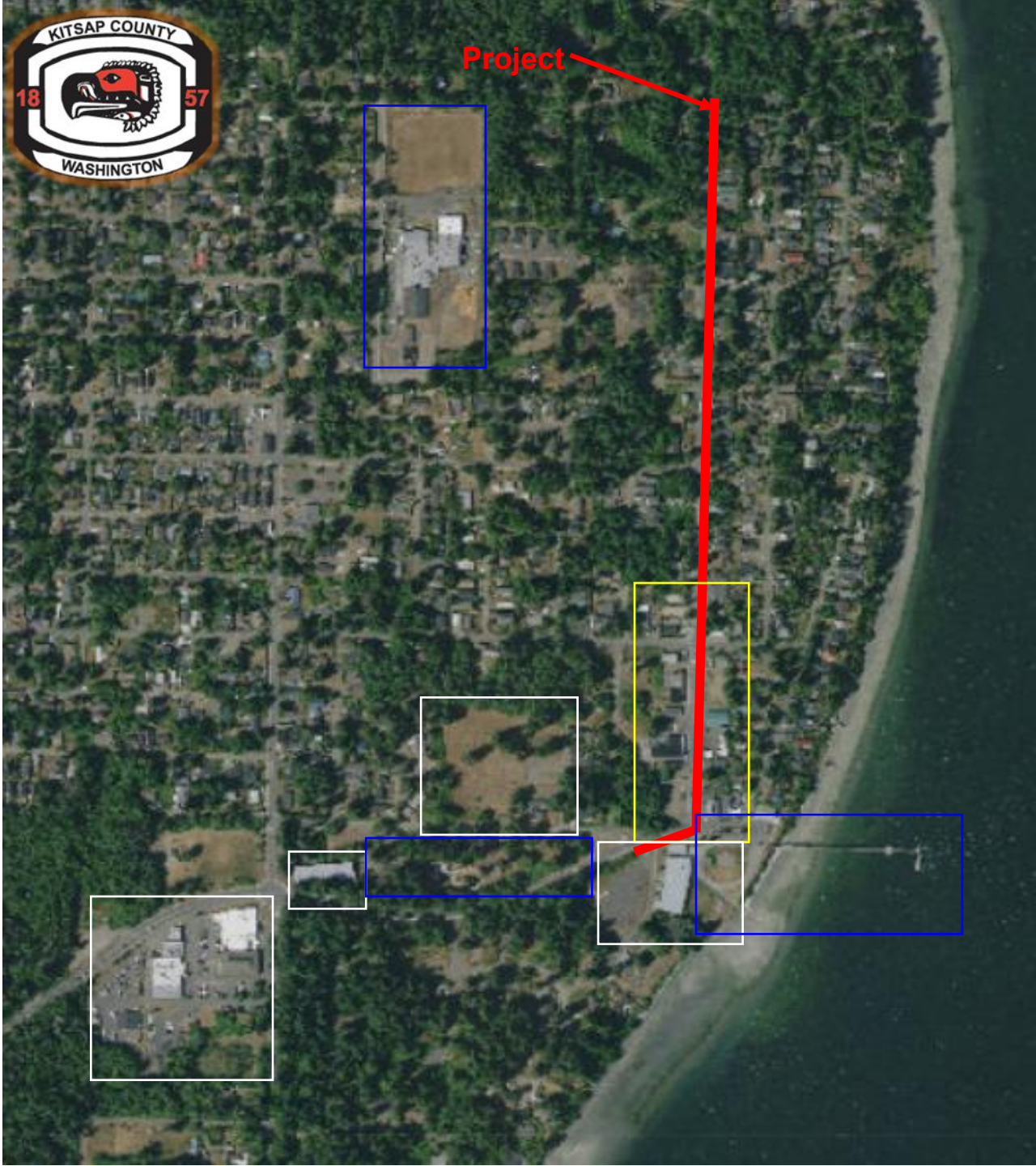
Suquamish

- Commercial Center
 - Grocery
 - Services
 - Fire Department
 - Post Office



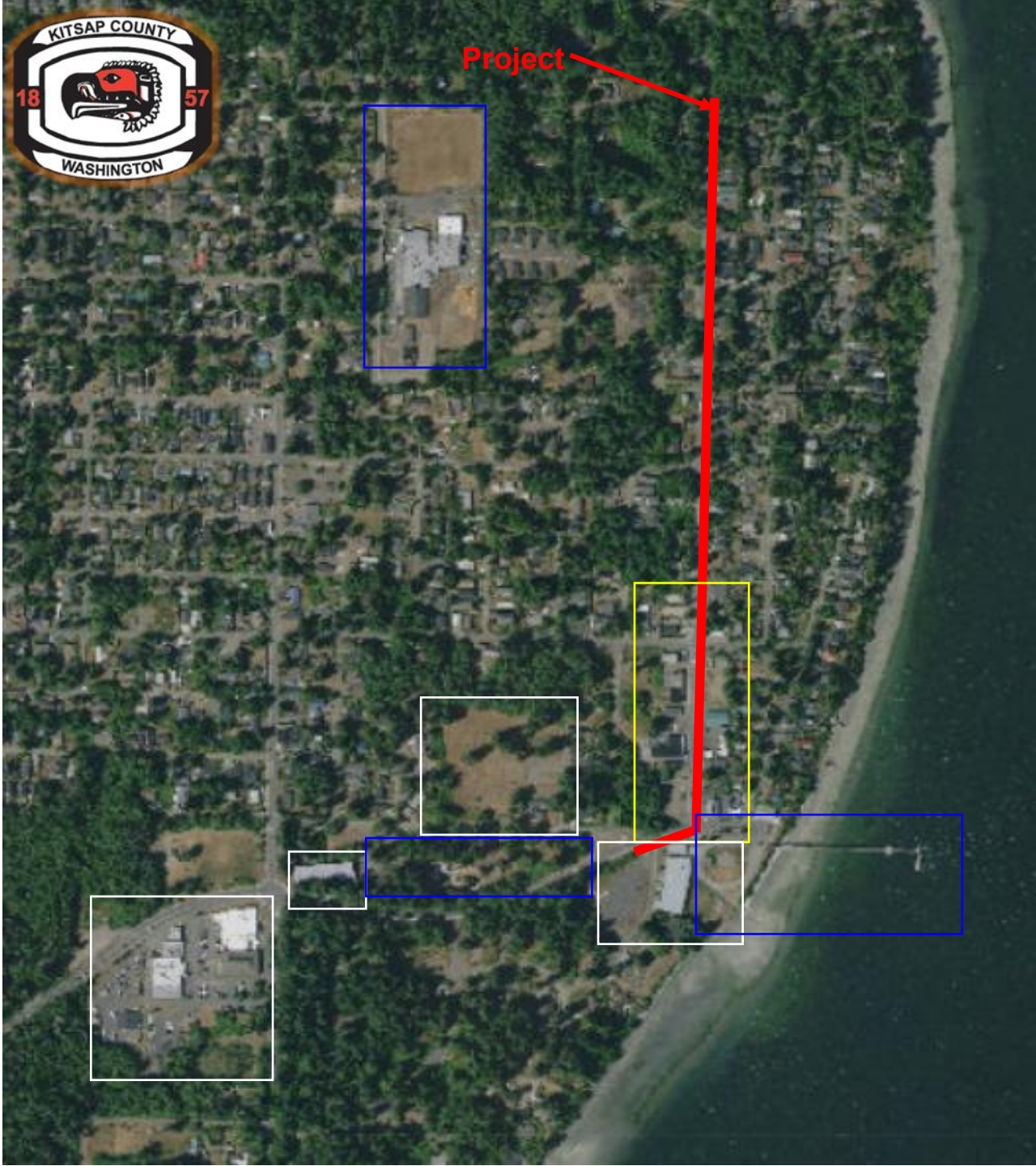
Suquamish

- Commercial Center
 - Grocery
 - Services
 - Fire Department
 - Post Office
- Suquamish Tribe
 - Administrative Center
 - Tribal Police
 - Museum
 - Historic Cemetery
 - Cultural Center



Suquamish

- School
- Recreation
 - Park
 - Marina
 - Puget Sound beach access



Suquamish

The Problem....

Connections within the Community

- Walking and Biking within Suquamish
- Safety

Project concerns....

- ROW - Tribal Trust Lands
- Parking & business access



Project

Winfred St.

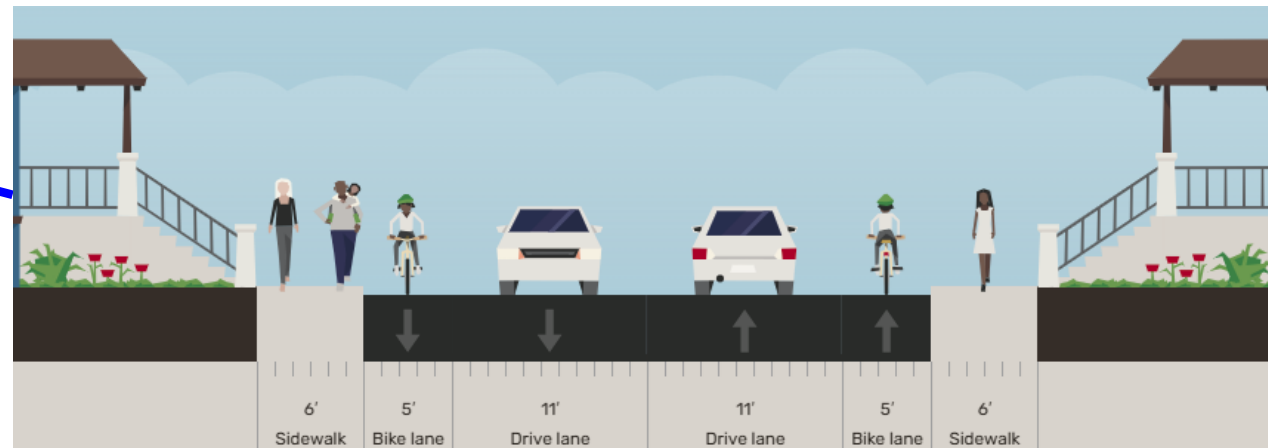
Center St.

South St.

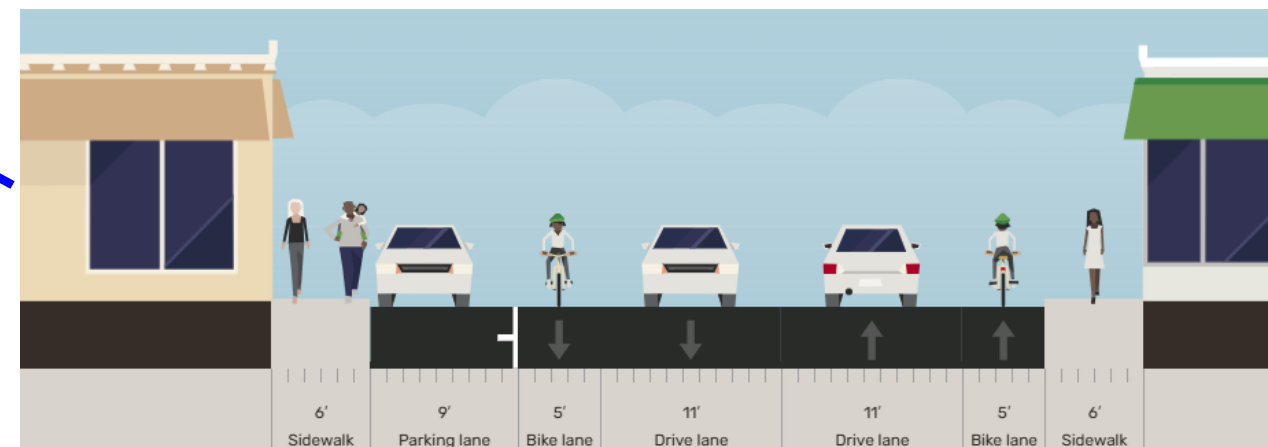
Suquamish

The Solution...

Corridor



Business Area





Suquamish

The Details....

Phase	Funding
PE	\$450,000 STP \$70,000 Local
ROW	\$692,000 STP \$118,000 Local
Construction	\$4,269,194 Grant \$666,291 Local
Total	\$6,255,485