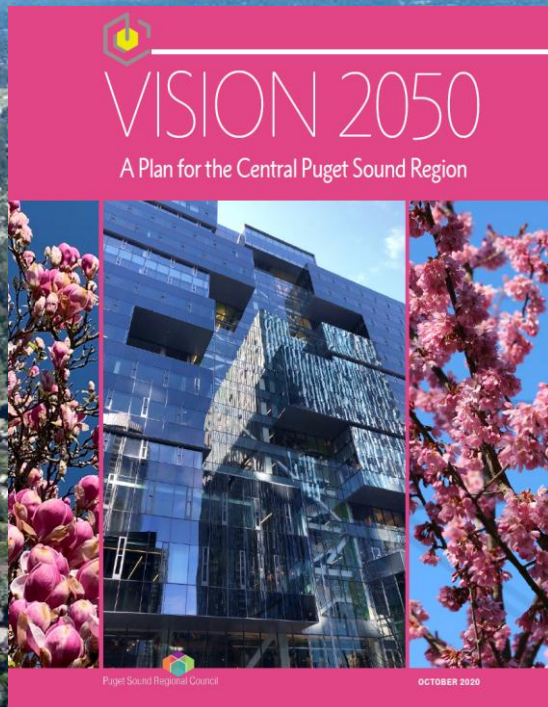


# VISION 2050 Implementation Progress Report

Growth Management Policy Board

May 21, 2026



Puget Sound Regional Council

# VISION 2050 Review

This is a chance to look at the implementation and accomplishments of VISION 2050 after its first five years.

- **What work has been completed to implement VISION 2050?**
- **Where has the region made progress?**
- **What are we continuing to work on?**

Review of VISION 2050 over the next few months will help us identify areas that need continued focus in the VISION 2060.



# Questions for the Board

- Are there other accomplishments from the past five years?
- What goals does your community remain focused on?
- What data do we need to for VISION 2060?



# VISION 2050

- Adopted in October 2020
- Regional plan for 5.8 million people
- Guide for a healthy environment, thriving communities, and strong economy

Mobility

Environment

Climate

  
VISION 2050  
A Plan for the Central Puget Sound Region

Jobs

Equity

Housing

Puget Sound Regional Council

OCTOBER



# Working Towards the Vision



# Local Plans Updated

- **Comprehensive plans updated** throughout the region
- Significant local efforts on housing
- Middle housing and ADU regulations adopted
- Critical areas updates

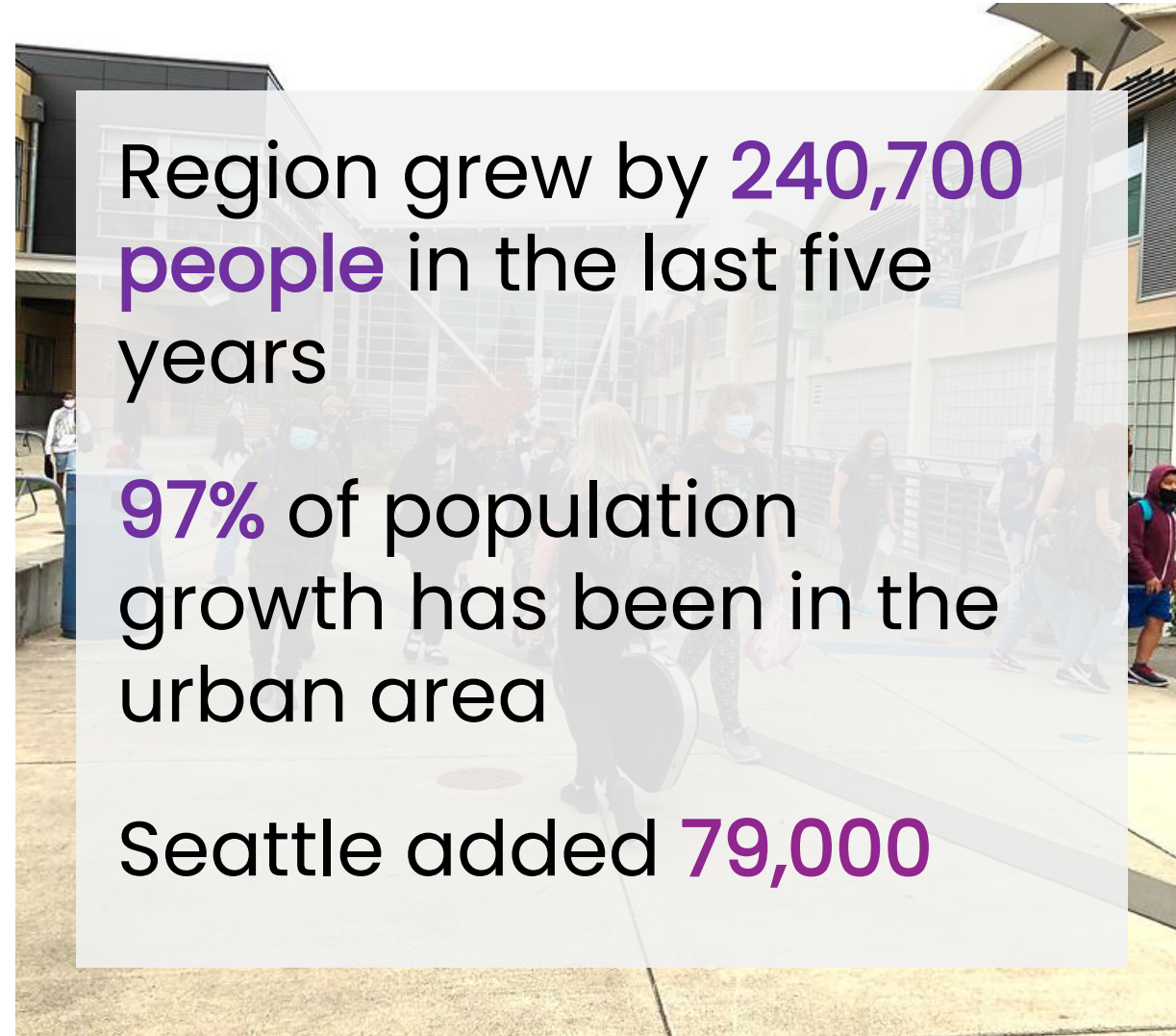


# The Region Keeps Growing

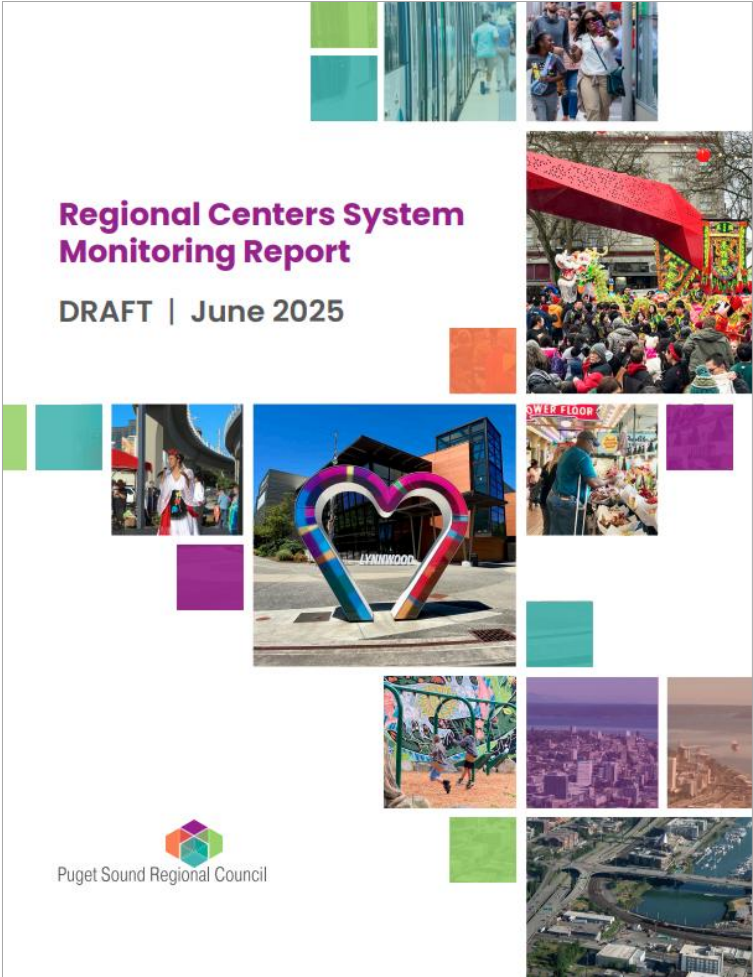
## Growth by Regional Geography, 2021-2025



Source: Office of Financial Management, April 1 Official Population, 2025



# Reevaluated the System of Centers



## Report evaluated regional center objectives:



Growth



Mobility



Housing



Environment



Social Equity &  
Opportunity



Economic  
Development



Public Health



Urban Form



# Significant Expansion of Transit

## Nearly 30 new miles of light rail

- 2021 – Northgate, Roosevelt and the U District
- 2024-26 – the 2 Line to Bellevue and Redmond
- 2025-26: Kent/Des Moines, Federal Way, Shoreline, Mountlake Terrace, and Lynnwood

Plus regional BRT systems, freeway projects, & fast ferries



# Investing in Mobility

## \$1.97 billion in transportation funding distributed to the region

- 2022 and 2024 FHWA and FTA project funding rounds
- 2021 and 2023 Rural Town Centers and Corridors funding rounds
- 2021 and 2023 Transportation Alternatives Program funding rounds

## Regional Transportation Plan (2022, 2026)

[Regional Safety Action Plan](#)

[PSRC Active Transportation Plan \(2022-2050\)](#)

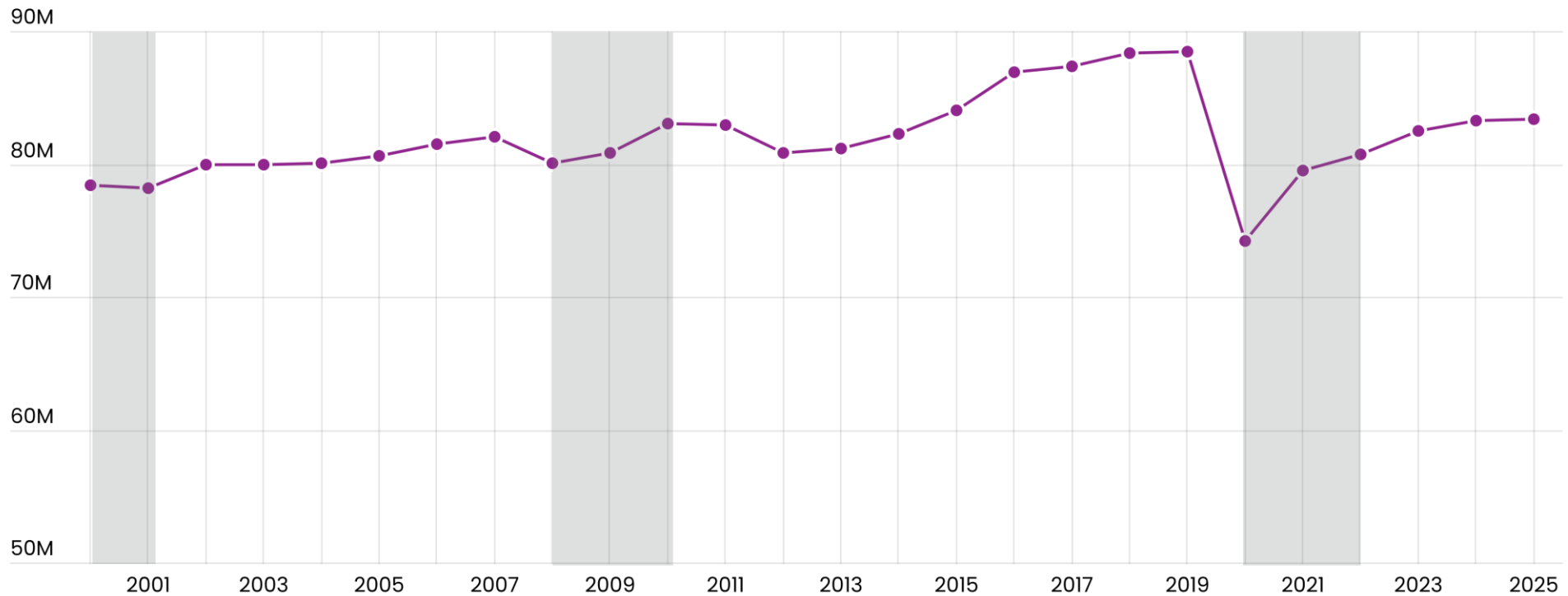
[Transportation System Visualization tool](#)

[RTP Performance Dashboard](#)



# Vehicle Miles are Below 2019 Levels

## Total Vehicle Miles Traveled in Central Puget Sound, 2000–2025



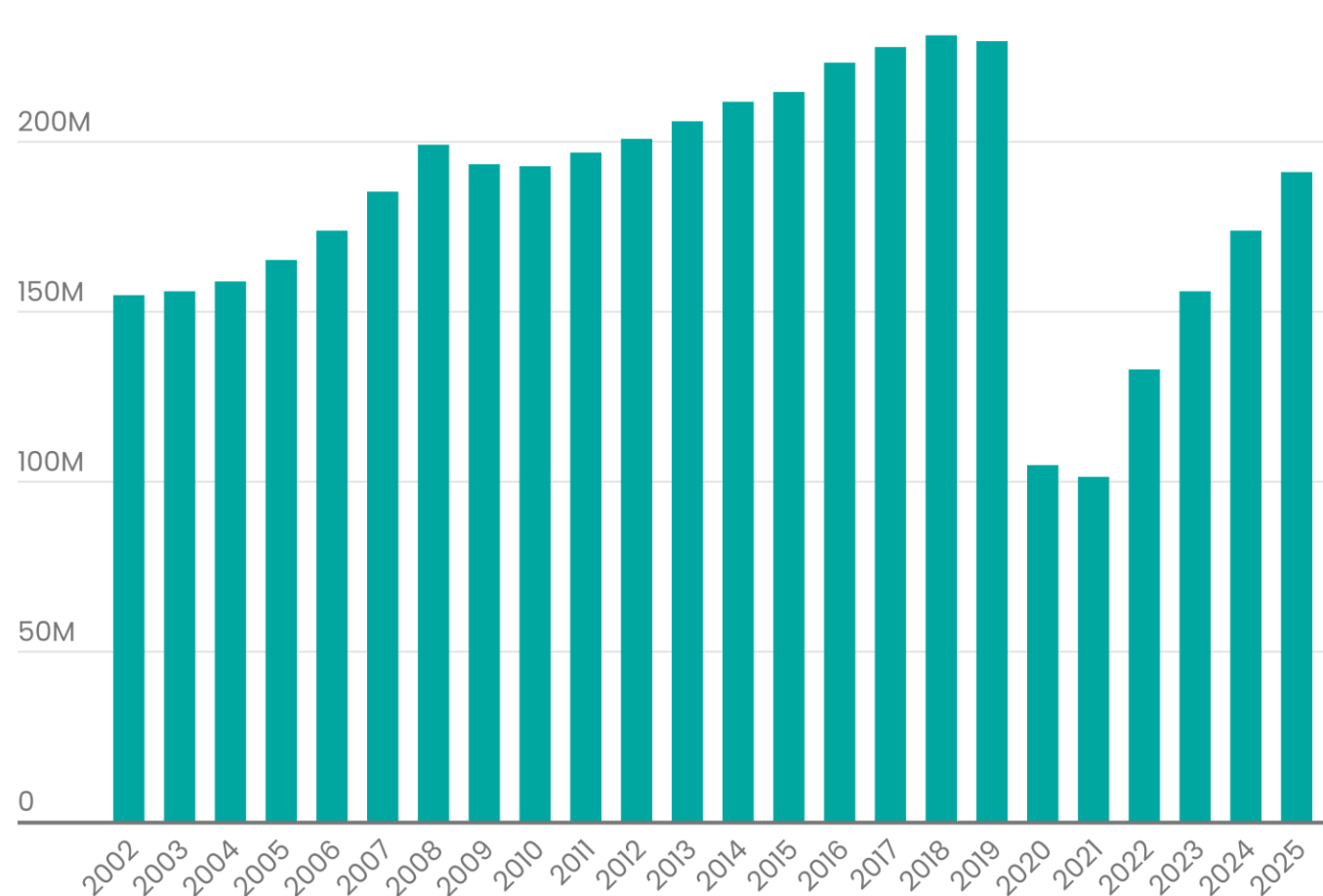
Gray bars indicate U.S. recessions and the COVID-19 Pandemic.

Source: Washington State Department of Transportation, Highway Performance Monitoring System



# Transit Ridership is Recovering

## Annual Boardings, 2002–2025



There were approximately **191 million** boardings on the Region's transit system in 2025 (**83%** of 2019 ridership)



# Advancing Equity

## Developed the Regional Equity Strategy

- Capacity building
- Community engagement
- Data and research
- Best practices



Established the **Equity Advisory Committee**

Transportation equity pilot program

Equity tracker

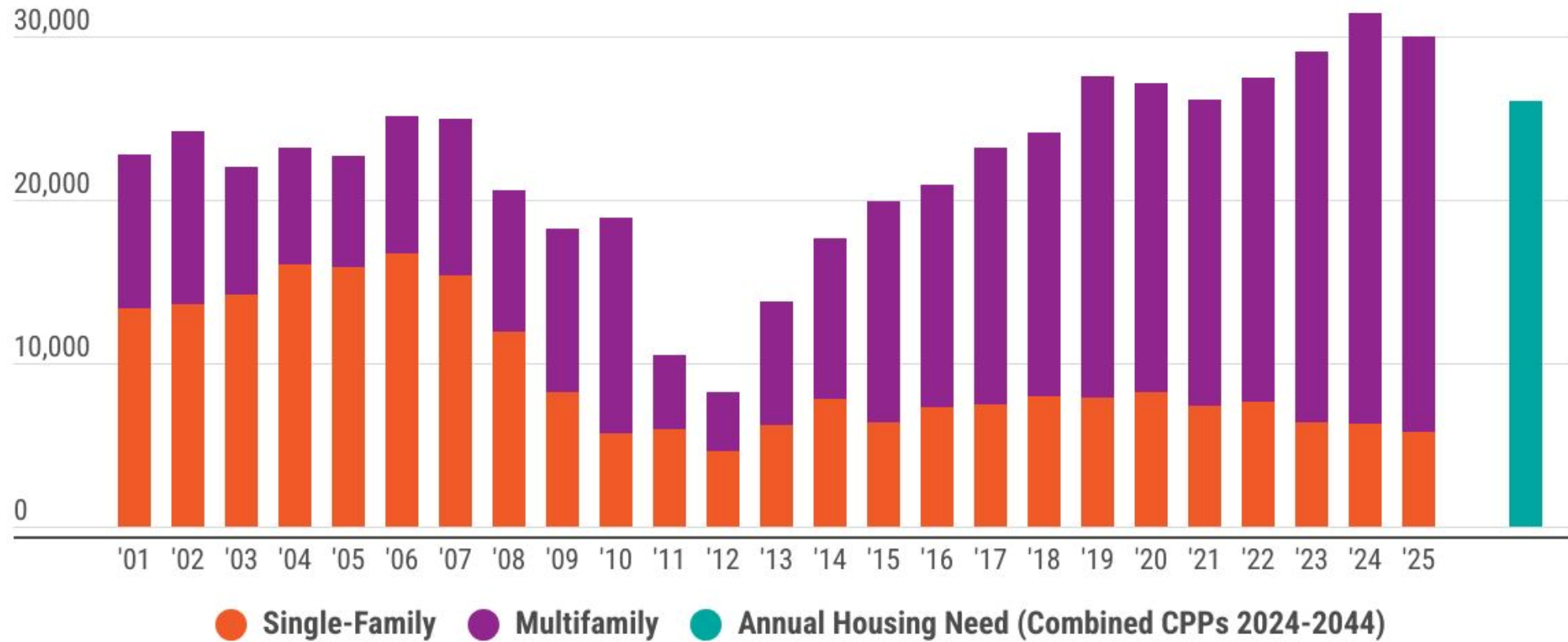


# Housing Actions

- [Regional Housing Strategy](#) (2022)
- [Housing Incentives and Tools Survey](#) (2025)
- [Housing Innovations Program](#) (2020)
- [Housing Opportunities by Place](#) (2023)
- [Housing 101: Creating a Shared Understanding](#)
- Annual housing monitoring
- Local housing action plans
- Comprehensive plan updates
- Middle housing and ADU codes
- Station area planning



# 144,100 Housing Units Constructed



Source: PSRC calculations using: OFM, Postcensal Housing Unit Estimates 2000-2025, Intercensal Housing Estimates 2000-2020; 2000 Decennial Census, Table H30.



# Increases in Housing Capacity

Local jurisdictions created capacity for an additional 800,000 new housing units



# New Housing Futures Center

- PSRC in partnership with University of Washington
- Data & research, education and mentoring for the next generation of housing professionals, convening
- Public Private partnership



# Environmental Protection

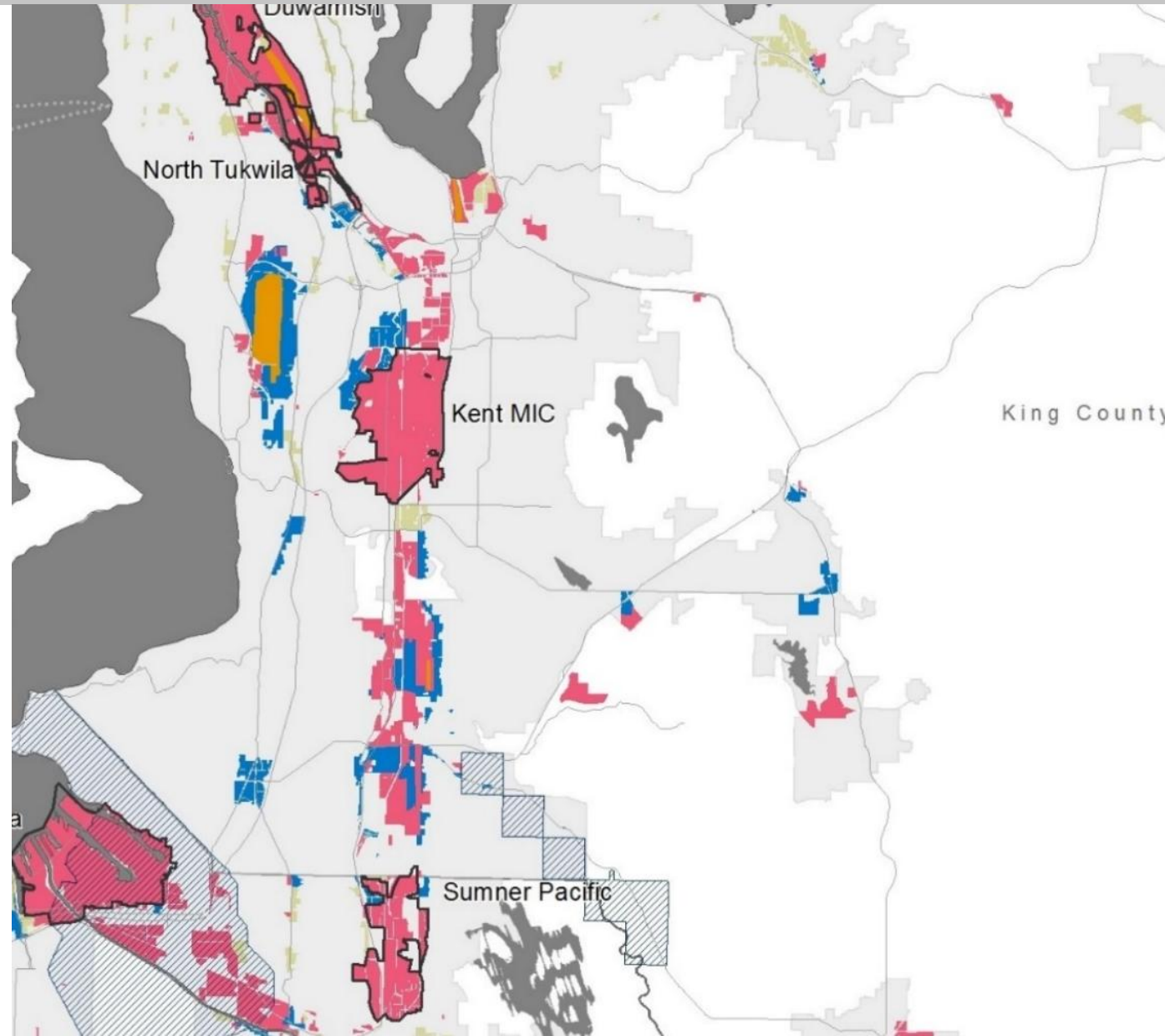


- [Comprehensive Climate Action Plan](#) (with PSCAA)
- [Conservation Toolkit](#) published
- Stormwater park [guidance](#) and development grants for six communities
- Conservation programs in each county



# Economic Recovery

- [Regional Economic Strategy \(2022, 2026\)](#)
- Post-Covid downtown recovery event (2023)
- [Industrial Lands Analysis \(2024\)](#)
- [Commercial Space Sector Study \(2022\)](#)
- [Regional Aviation Baseline Study 2021](#)



# Enhanced Engagement



- [Summer Planning Academy](#)
- Increased engagement with Tribes
- Engagement hubs
- Toolbox webinars



# PASSPORT TO 2044

Comprehensive Plan  
Workshop Series



## Support for comprehensive plan updates

- Direct support for cities and counties
- 15 webinars
  - Over 2,000 live webinar attendees
- 11 guidance documents

# Next Steps

Review of VISION 2050 over the next few months will help identify areas that need continued focus in VISION 2060.

- Continue to look at progress and gaps in VISION 2050
- Analyze regional data
- Identify future focus areas



# Questions for the Board

- Are there other accomplishments from the past five years?
- What goals does your community remain focused on?
- What data do we need to for VISION 2060?



# Thank you.

Paul Inghram, FACIP

Director of Growth Management

[pinghram@psrc.org](mailto:pinghram@psrc.org)



Puget Sound Regional Council