



Puget Sound Region EV Charging Infrastructure Plan

Regional Project Evaluation Committee Meeting
May 21st, 2026



Agenda

1. Plan background, benefits, and design

2. Project team

3. Engagement participants and activities

4. Project timeline

5. Next steps and questions

Puget Sound Clean Air Agency (PSCAA)

Vision: Healthy air, climate, and environmental justice for the benefit of all people in the Puget Sound region.

Mission: We preserve, protect, and enhance air quality and public health, enforce the Clean Air Act, support policies that reduce climate change, and partner with communities to do this work equitably.



Why Create a Regional Plan?



- ★ • Support jurisdictions of all sizes and ensure regional consistency
- Achieve economies of scale and funding competitiveness
- Clarify public sector roles and potential partnerships
- Identify priority areas and use cases for charging
- Support equity in charging build-out
- Create strategies to reduce frequent barriers

How Will the Plan Be Designed?

- ★ • Shared roadmap for expanding charging for light-, medium-, and heavy-duty vehicles
- Coordinated recommendations for where and how charging should be installed
- Build on existing resources like plans, data, & best practices
- Focus on supporting local governments
- Actionable resource!!

Key Plan Components

8 charging use cases for light-, medium-, and heavy-duty vehicles



Data analysis → Census tract-level charging needs



Site evaluation criteria → Selecting specific parcels

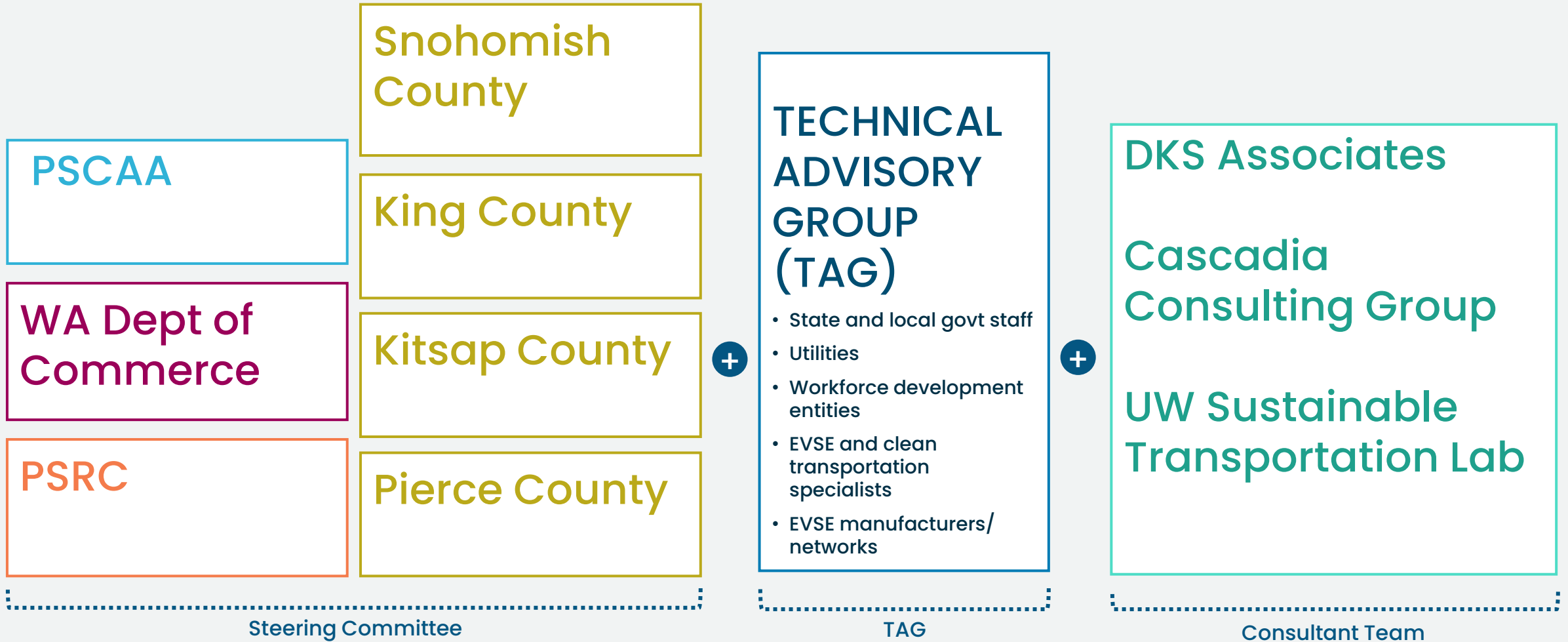


Roles, coordination, & partnerships



Regional action framework → Specific and actionable steps

Project Team Structure



Who Is Giving Input?



- Local government staff
- Tribes
- Utilities
- Transit agencies
- Ports
- Community-based organizations
- Workforce entities
- Rideshare drivers
- Potential charging site hosts
- School districts
- Equipment manufacturers & vendors
- Workforce organizations
- Fleets

How Is Input Being Collected?



Survey: City and county staff, utilities, transit agencies, potential site hosts, ports



Focus groups: Transit agencies, potential site hosts, ports, community-based organizations, workforce development entities



Interviews: Tribes, utilities, rideshare and gig drivers



Virtual workshop: City and county staff

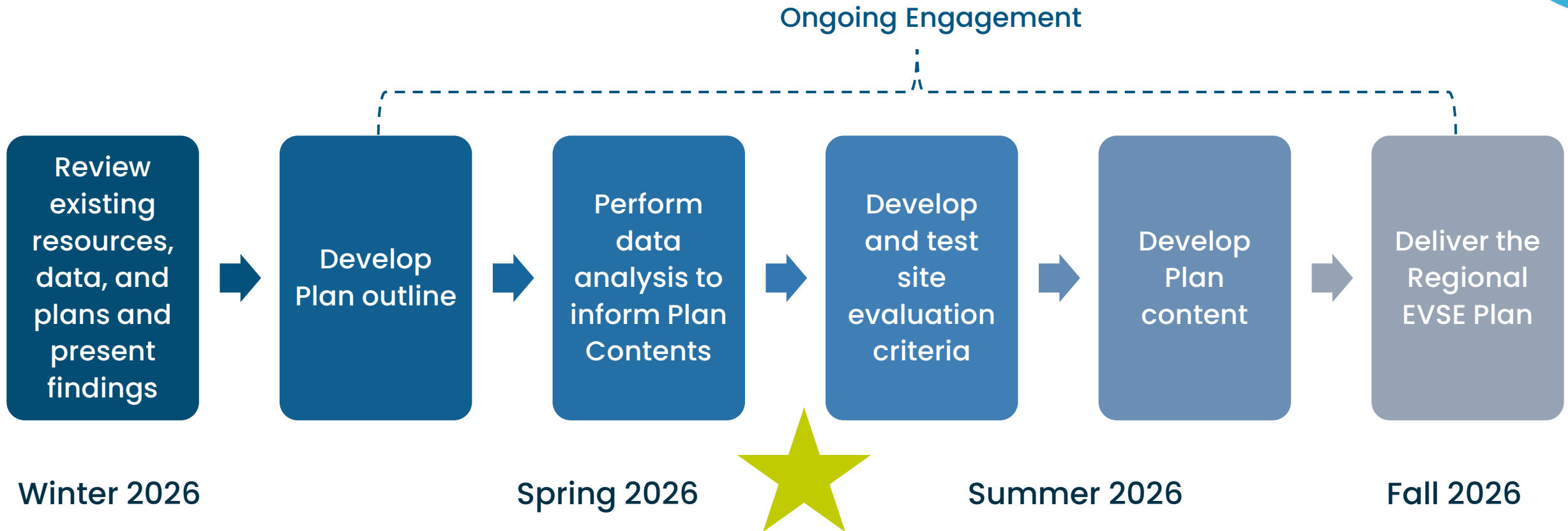


Online engagement hub for draft Plan: All audiences

May & June

Late summer

Plan Timeline

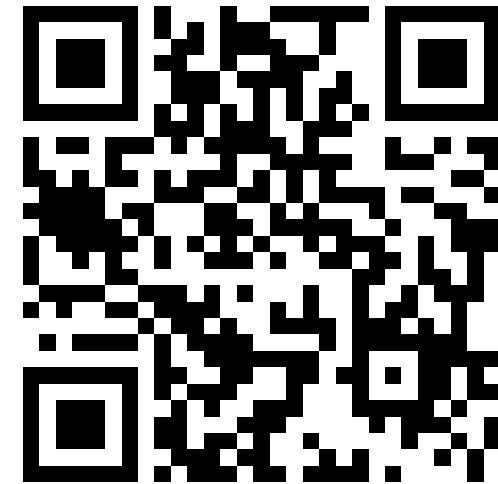


How You Can Help

1. Take our survey (open now through 6/19)
2. Participate in our virtual workshop (6/10, 1-2:30pm)
3. Email ericaw@pscleanair.gov with thoughts or questions



Survey: <https://www.surveymonkey.com/r/RegionalEVPlan>



Workshop Registration: <https://forms.office.com/r/XJK1VAaXvC>

Questions for RPEC Members

- Where will regional coordination on charging infrastructure add the most value to you, and what types of decisions should stay local?
- When charging goals conflict (such as equity, cost, grid readiness, or deployment speed), which factors usually drive the final decision for deployment?