

Regional Transit Access Update

Regional TOD Committee

June 12, 2026



Puget Sound Regional Council

Today's Discussion

- Background on the project
- Continuing work on regional transit access assessment
- Key regional analysis results
- Next steps/Key milestones



Regional Transportation Plan (2022) calls for PSRC to:

“...Develop and update tools and resources to **help identify where access to transit can be improved**, particularly for bicyclists and pedestrians. ”

Transit access in RTP:

- Transit-Oriented Development (TOD)
- Walk, Bike, and Roll
- Transit Service
- Drop-off/Pick-up Modes
- Parking



2023 Transit Access Assessment Recommendations

- **Automate and streamline the tools** to help local agencies more easily assess transit access needs and opportunities.
- Develop clear and comprehensive information on the **roles and responsibilities** of agencies.
- **Integrate new emerging themes**, including safety, equitable engagement, and new technologies to transit access tools.
- Develop guidance on **equitable engagement and outreach** for transit access.



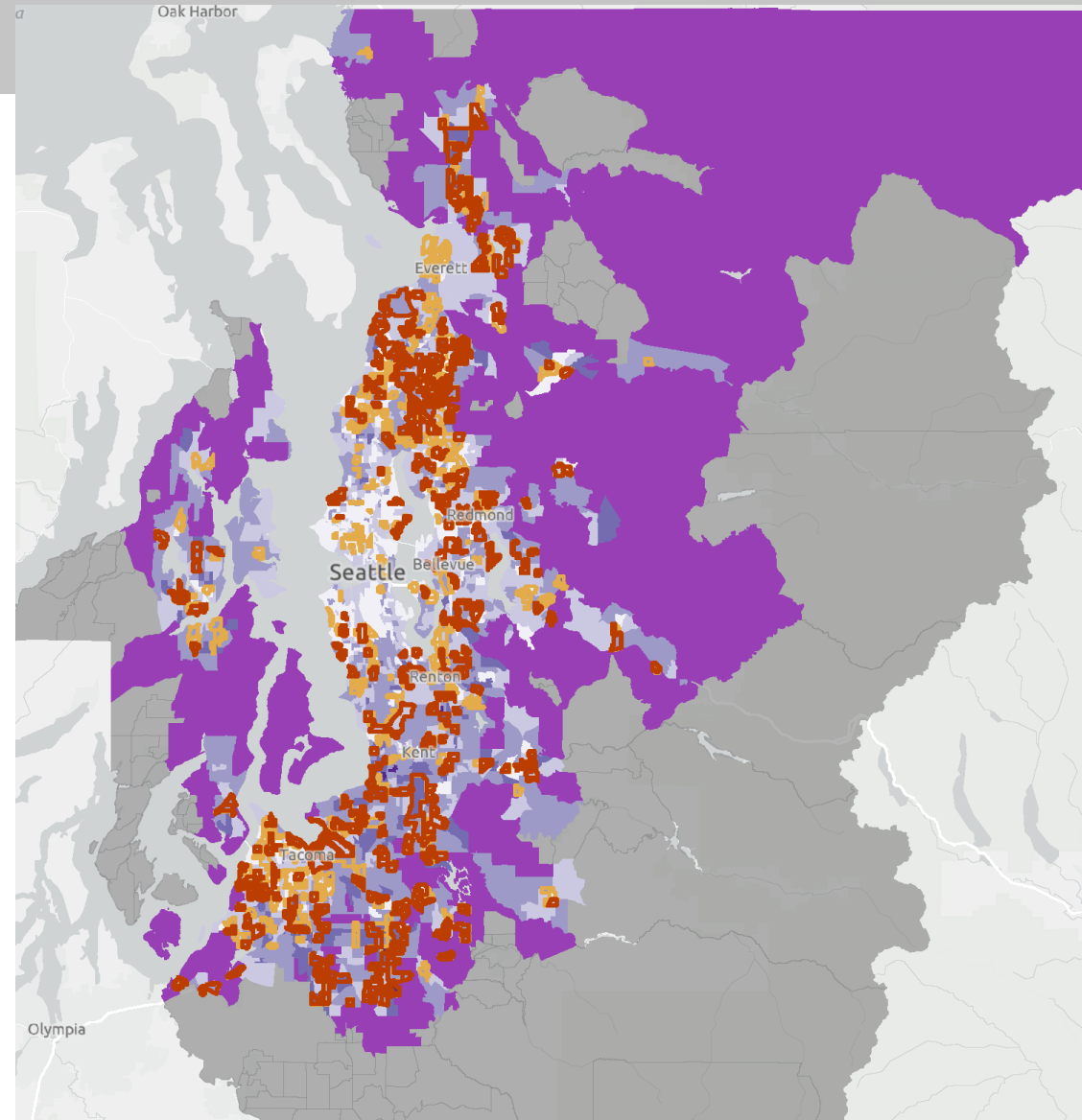
Transit Access Components

- **Urban form and connectivity:**
 - TOD
 - Walk, Bike, Roll access
- **Transit service**
- **Drop-off and Parking:**
 - Curb space for drop-off modes (microtransit, TNC, specialized, etc.)
 - Parking (auto & bike) – including management of existing spaces & new spaces



Methodology

- Every Census Block Group in region analyzed
- Analysis using regional data sources based on transit access components
- Thresholds used to determine applicable transit needs



Transit Access Analysis

- **Urban form and connectivity:** includes
 - Pedestrian Network Completion
 - Bicycle infrastructure and LTS
 - Direct pathways to transit stops
- **Transit service**
 - Based on activity unit density thresholds in the RTP
- **Drop-off and Parking**
- **Additional Contextual Information**

Transit Service Type	Density Threshold
Limited Service	under 7 activity units per acre
Local Service	7 to 15 activity units per acre
All Day Service	15 to 25 activity units per acre
Frequent Service	25 to 40 activity units per acre
High-Capacity Transit	more than 40 activity units per acre



Regional Transit Access Findings

Urban Form and Connectivity

Metric	Assessment of Need Today
Lacks Complete Pedestrian Infrastructure	45%
Lacks Bicycle Infrastructure	47%
Areas with Identified Pedestrian and Bicycle Safety Needs	35%
Lacks Direct Pathways to Transit Stops	3%

Pedestrian Infrastructure Highlights

- Metropolitan Cities – 16%
- Core Cities – 42%
- Rural Areas – 94%



Regional Transit Access Findings

Transit Service

Metric	Density Threshold	Today
Limited Service	Under 7 a.u./acre	32%
Local Service	7 to 15 a.u./acre	34%
All Day Service	15 to 25 a.u./acre	14%
Frequent Service	25 to 40 a.u./acre	6%
High-Capacity Transit	More than 40 a.u./acre	15%

Frequent Transit Service Highlights

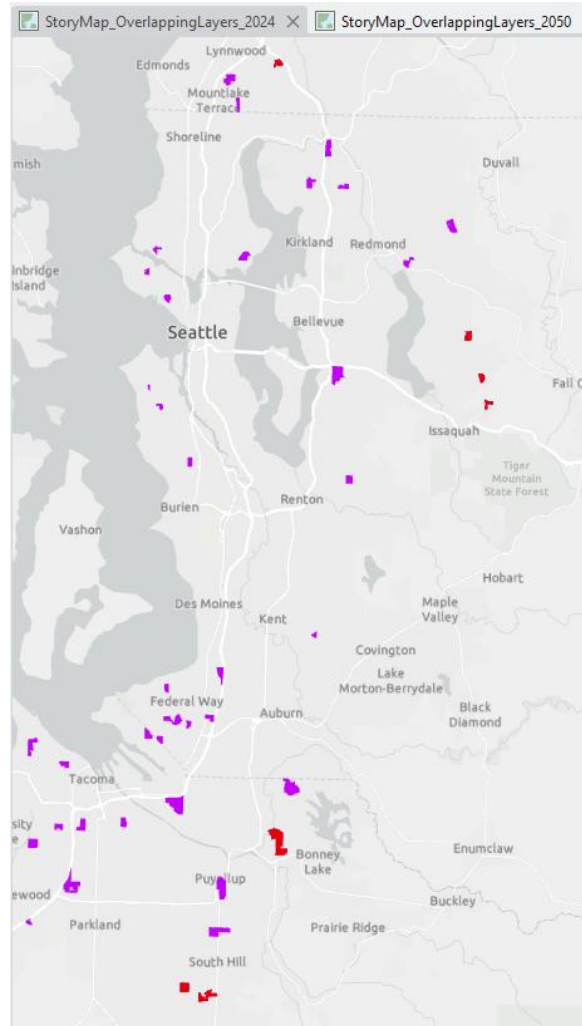
- Metropolitan Cities – 9%
- Core Cities – 8%
- High-Capacity Transit Communities – 3%



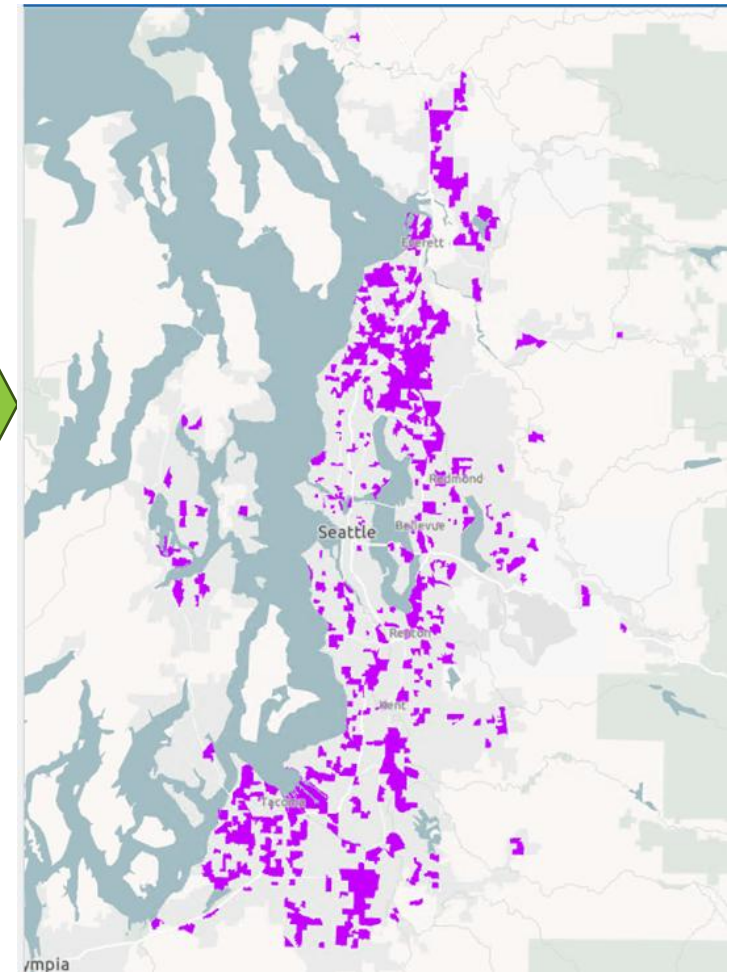
Incorporation of Regional Transportation Data

- Illustration accounting for density-transit service mismatches
 - Existing System includes small areas scattered throughout region
 - Planned 2050 System assumes VISION 2050 land use growth patterns. More widespread mismatch in densities compared to transit service.

Existing System



2050 System



Regional Transit Access Findings

Parking Management & Supply

Regional Geography	Assessment of Need Today
Metropolitan Cities	1%
Core Cities	2%
High-Capacity Transit Communities	9%
Cities and Towns	16%
Urban Unincorporated Areas	43%
Rural Areas	59%



Transit Access Strategies

- **Urban form and connectivity:** includes
 - Pedestrian Network Completion
 - Bicycle infrastructure and LTS
 - Direct pathways to transit stops
- **Transit service**
- **Drop-off and Parking**
- **Planning, Policy, and Regulatory Considerations**



Additional Elements

PSRC anticipates inclusion of:

- Guidance for how **local data and knowledge** can help pinpoint transit access solutions
- Further information on **roles and responsibilities**
- How **community engagement** can inform context-appropriate solutions to transit access needs.



Discussion and Next Steps

Please Attend:

- Webinar on June 17, 2026 (10:30 am to 11:30 am)

Register at this [Link](#)

Post-webinar:

- Release Transit Access Tool for use.
- Updates to data and method aligning with RTP development cycle (next update for release in 2030)

Questions?





Thank You!

Gil Cerise

Program Manager

gcerise@psrc.org



Puget Sound Regional Council