

Regional Open Space Conservation Plan Update

Executive Board

June 25, 2026



Puget Sound Regional Council

VISION 2050 Supports Open Space

MPP-En-12: Conserve and enhance open space and update the Regional Open Space Conservation Plan

MPP-En-15: Provide walkable access to parks and trails and prioritize historically underserved communities

MPP-En-9: Enhance urban tree canopy to support community, environmental and economic health

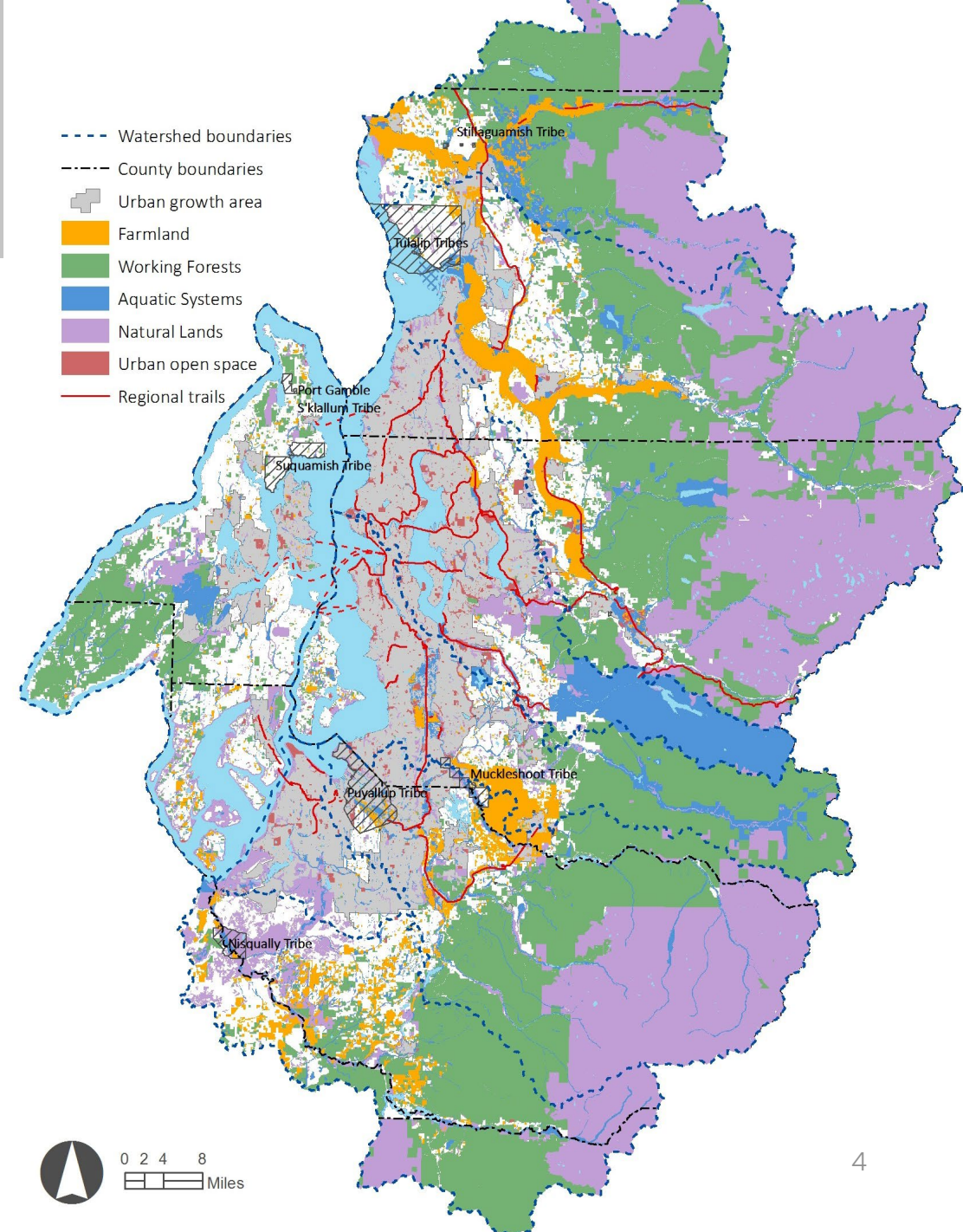


Regional Open Space Network

6 categories of open space:

- Farmland
- Working forests
- Aquatic systems
- Natural lands
- Urban open space
- Regional trails

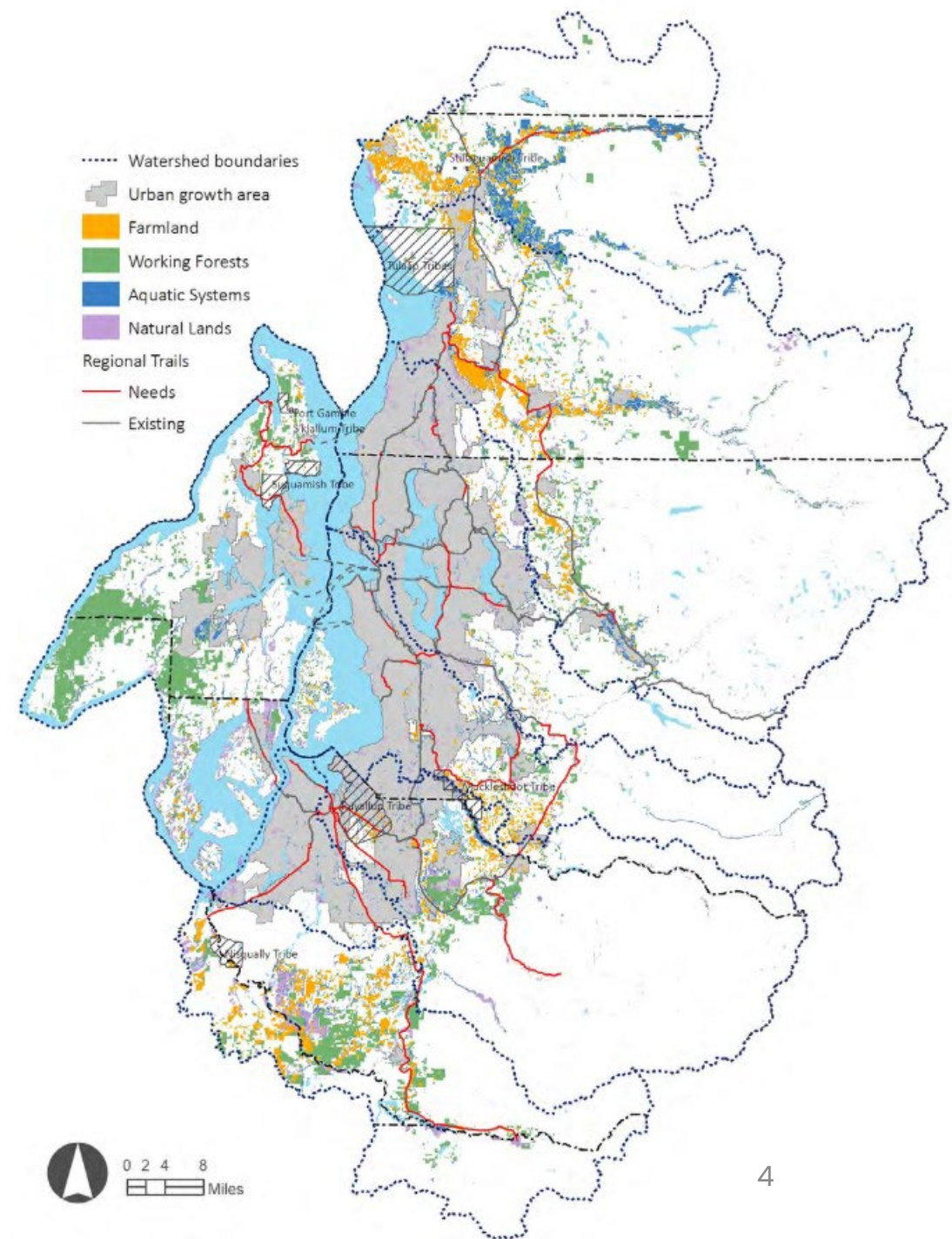
[Regional Open Space Conservation Plan](#)



Conservation Needs

Conservation Needs in the Regional Open Space Network:

- Farmland: 104,000 acres
- Working Forests: 183,200 acres
- Aquatic Systems: 93,700 acres
- Natural Lands: 81,700 acres
- Regional Trails: 300 miles
- Highest priority urban open spaces: 47 parks

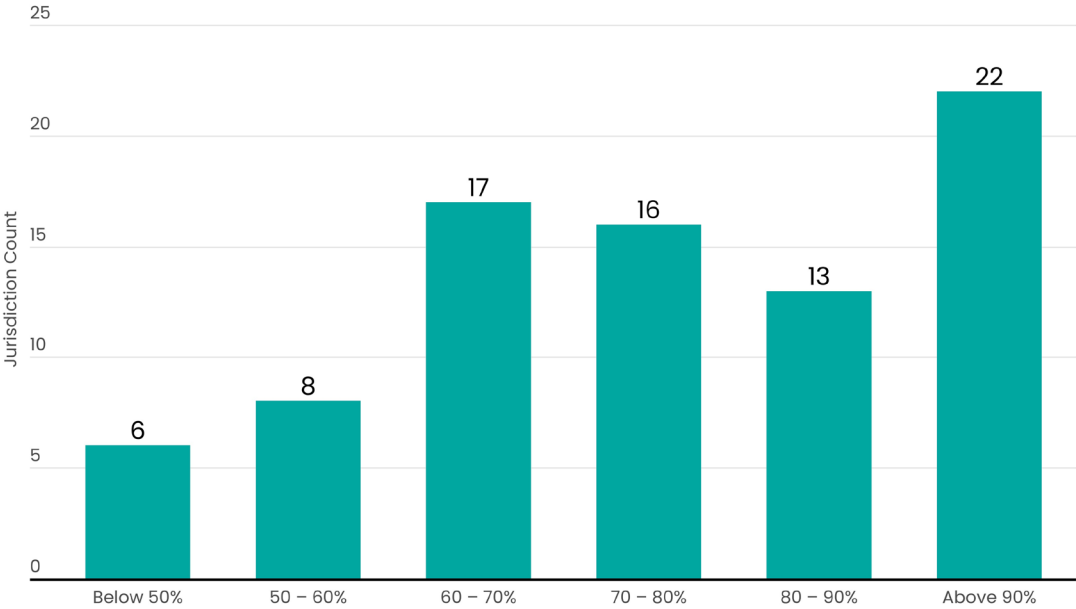


Urban Open Space

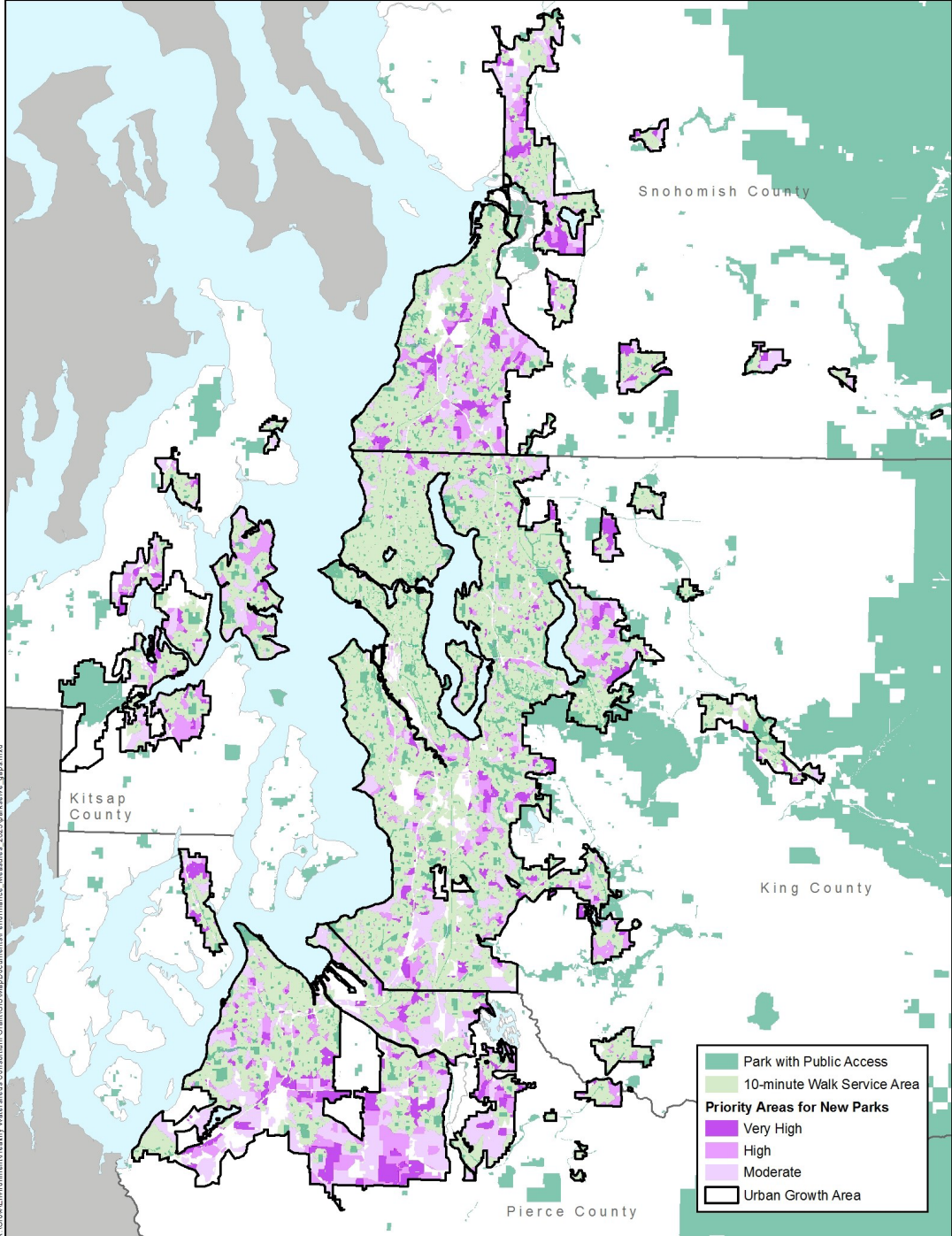
Goal: By 2050, all urban residents within a 10-minute walk of a park.

ParkServe: urban population within a 10-minute walk of a park: 72%

Cities by Percentage of Population Within a 10-Minute Walk of a Park



Data source: ParkServe, Trust for Public Land

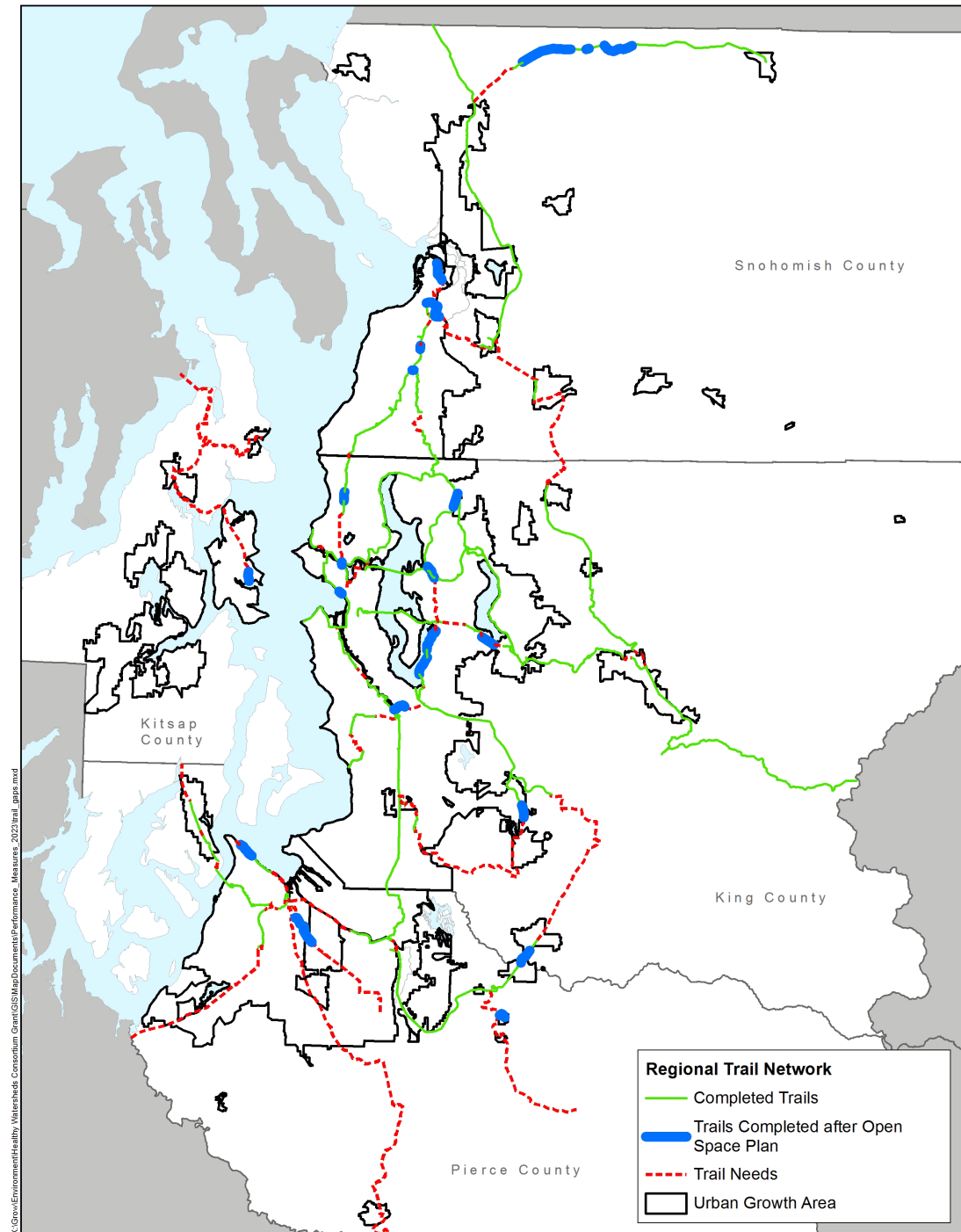


Regional Trails

Goal: By 2050, add 300 miles to the regional trail network

Since 2018, 30 miles added to the regional trail network. Examples:

- Mountains to Sound Greenway Trail in King County
- Sound to Olympics Trail in Kitsap County
- Pipeline Trail in Pierce County
- White Horse Trail in Snohomish County

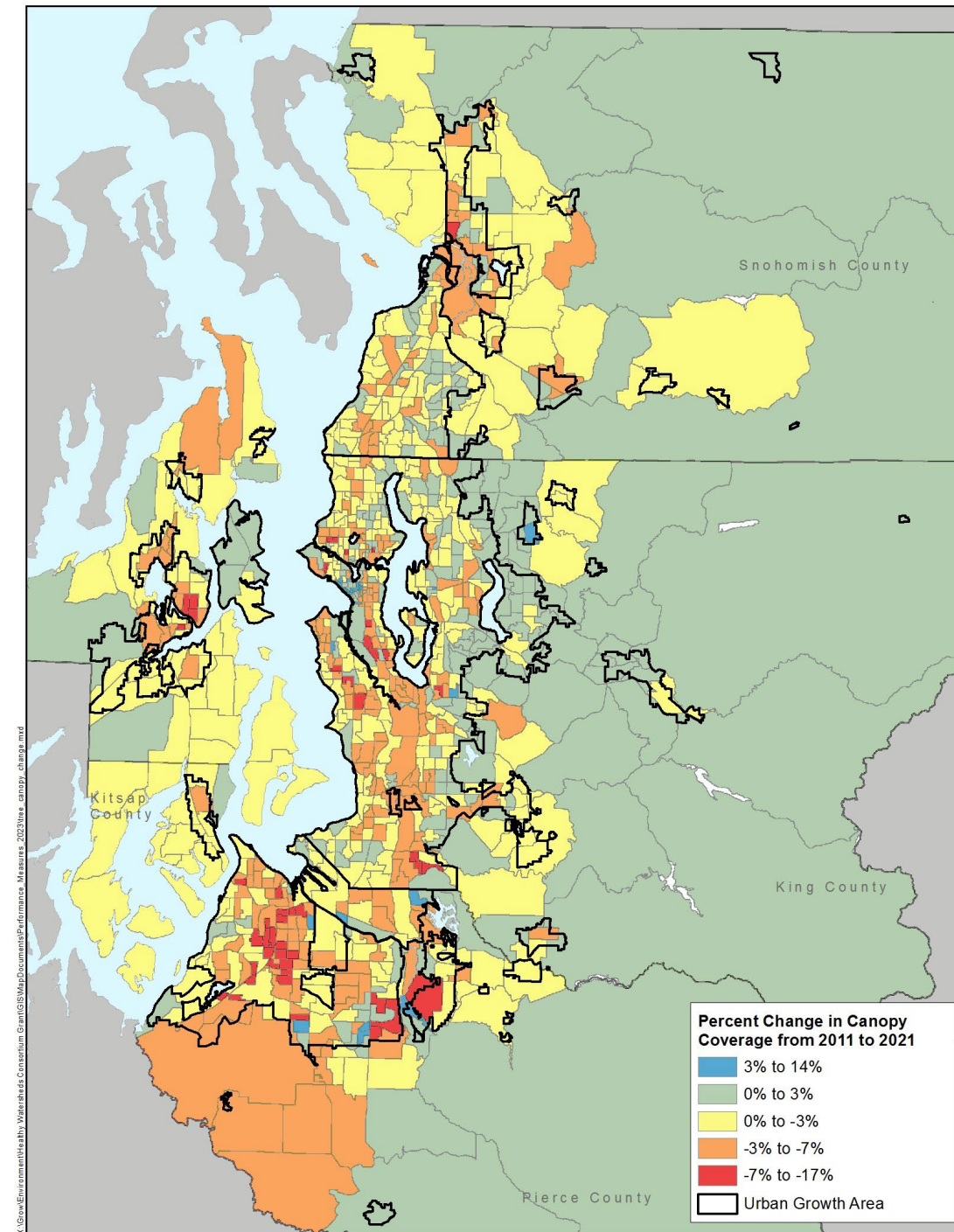


Tree Canopy Cover

Goal: By 2050, tree canopy cover in region remains at 2018 levels. By 2050, it will increase in the regional open space network.

Tree canopy cover change 2011–2021:

- Region: no change
- Urban: decrease of 3%
- Regional open space network: no change



Urban Growth

2012–2022 housing development in urban growth areas:

- Region: 95%
- King: 99%
- Kitsap: 73%
- Pierce: 88%
- Snohomish: 92%



Engagement



Key partners in plan development:

- PSRC boards and committees
- County staff
- Advisory committee
- Tribes
- Environmental Resource Agency Coordination Group

Summer Activities:

- Community survey
- Photo Challenge
- Community events



Advisory Committee

Cities of Everett
and Issaquah

Emerald Alliance

Forterra

King, Kitsap,
Pierce and
Snohomish
counties

Leafline Trails
Coalition

REI Cooperative
Action Fund

Port Gamble

S'Klallam,
Snoqualmie and
Suquamish Tribes

Trust for Public
Land

WA Dept of
Natural Resources

American
Farmland Trust



Engagement

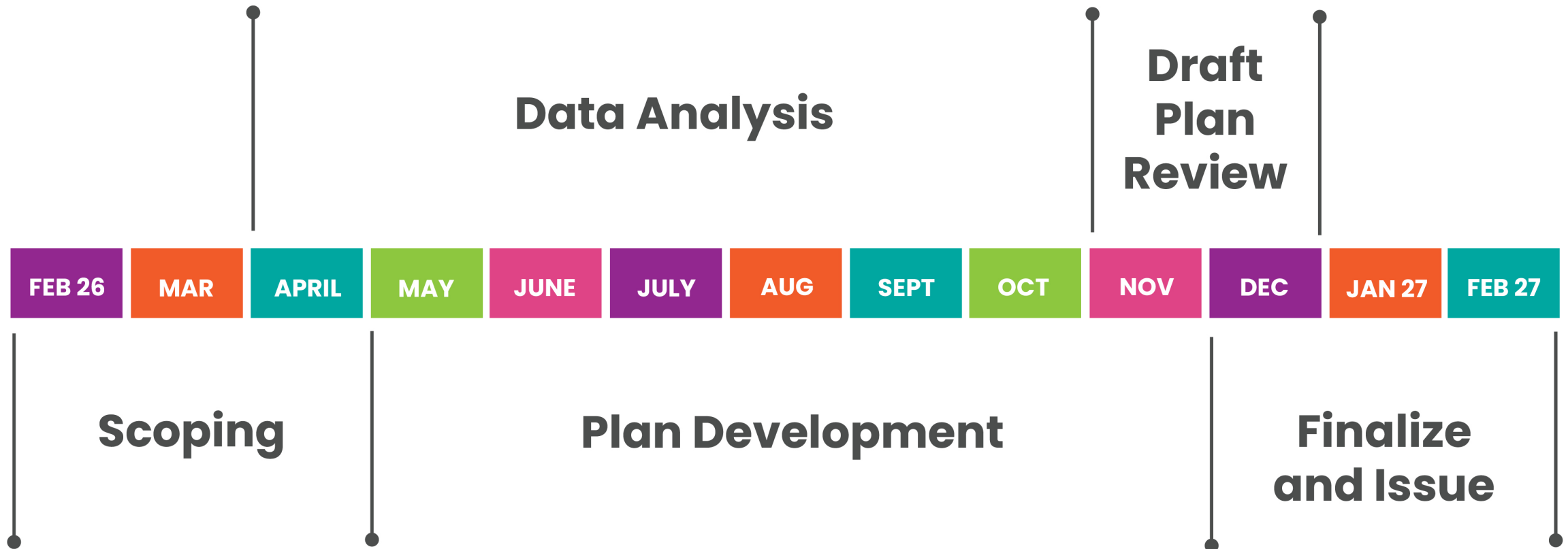


Community Events:

- July 9: Tacoma Farmers Market
- July 10: AquaFest, Lake Stevens
- July 14: National Parks & Rec. Month Celebration, Puyallup
- July 16: Music in the Meadows, Kent
- July 22: Marysville Farmers Market
- August 7: Bremerton First Friday
- August 11: Silverdale Farmers Market
- September 2: Columbia City Farmers Market



Open Space Plan Update Schedule



Discussion Questions



Executive Board input on the plan update:

- What are the biggest challenges in the conservation and enhancement of open space, parks and trails?
- What open space conservation and enhancement strategies should PSRC consider for the Regional Open Space Conservation Plan update?



Thank You!

Erika Harris, AICP

Senior Planner, eharris@psrc.org

Drew Hanson

Senior Planner/GIS Analyst, dhanson@psrc.org



Puget Sound Regional Council