

GETTING READY FOR THE FUTURE



Puget Sound Regional Council

OUR MISSION

Puget Sound Regional Council's mission is to advance solutions to achieve a thriving, racially equitable and sustainable central Puget Sound region through leadership, visionary planning and collaboration.

OUR REGION

The geographic area comprised of King, Kitsap, Pierce and Snohomish counties.

OUR MEMBERS

PSRC is composed of nearly 100 members, including the region's four counties, cities, towns, Tribal governments, ports, and state and local transportation agencies within the region.

WHAT WE DO

Planning for a Growing Region

VISION 2050 is a strategy for growth that sustains thriving communities, a healthy environment and a strong economy. VISION 2050 guides the local comprehensive planning process.

Keeping the Region Moving

PSRC helps communities secure federal funding for transportation projects and develops the Regional Transportation Plan to improve mobility, provide transportation choices and support the region's economy and environment.

Expanding Economic Opportunity

The Regional Economic Strategy provides a blueprint for regional collaboration to grow economic opportunity in the region.

Elevating Racial Equity in Regional Planning

PSRC is working with its Equity Advisory Committee (EAC) to co-create a Regional Equity Strategy to provide guidance and coordination to help members work toward racial equity in planning.

Data

PSRC provides data, modeling and long-term forecasts for transportation, population, jobs, housing, equity and more to help the region plan for the future.



LEADERSHIP



Executive Dave Somers,
PSRC President



Executive Ryan Mello,
Vice President



Mayor Dana Ralph,
Transportation Policy
Board Chair



Councilmember Ed Prince,
Growth Management
Policy Board Chair



Councilmember
Conrad Lee,
EDD President



Josh Brown,
Executive Director

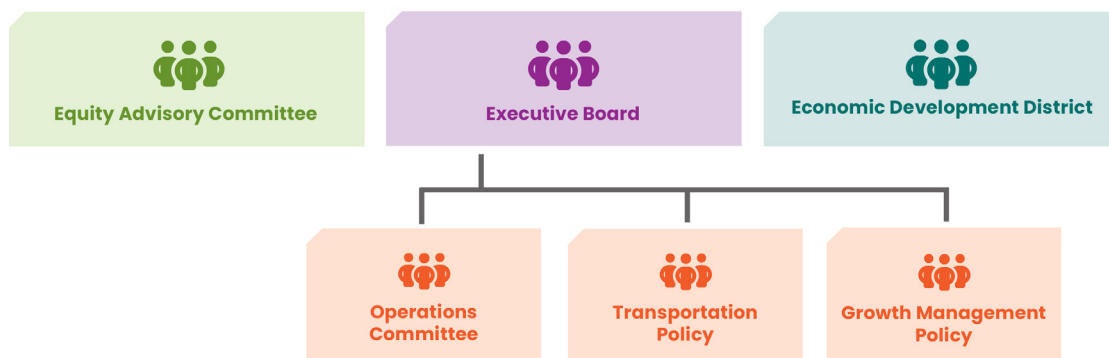
ORGANIZATION

Executive Board – Chaired by the PSRC president, meets monthly, and serves as the governing board. Composed of elected officials appointed by member agencies. Advised by the Equity Advisory Committee, Operations Committee and two policy boards.

Transportation Policy Board and Growth Management Policy Board – Include representatives of PSRC's member jurisdictions, Tribes, regional business, labor, civic and environmental groups, as well as voting members representing each caucus of the state Legislature.

Central Puget Sound Economic Development District Board – Composed of public and private sector members that meets quarterly to coordinate regional economic development planning.

Equity Advisory Committee – Cross-sector working group composed of residents, government and community-based organizations in the Puget Sound region representing BIPOC communities. Members are selected through an annual application process.



BUDGET AND FUNDING SOURCES

The Puget Sound Regional Council operates under a two-year (biennial) budget and work program. The agency receives about 70% of its revenue from federal grants, 5% from state grants and 25% from dues paid by PSRC members and other local sources.

STAY CONNECTED

Find out what's happening at PSRC and sign up for updates at psrc.org. Or contact us at 206-464-7532, info@psrc.org.