

Regional Transportation Plan: Outreach and Equity

Equity Advisory Committee • February 3, 2022



Today's Presentation

- **Regional Transportation Plan**
 - Outreach activities and what we've heard – Ben Bakkenta
 - Highlights of equity analysis – Jean Kim



VISION 2050 Implementation



Discussion on Approach

- Are there **elements missing** or **that should be expanded**?
- Are there **additional approaches** that we should be aware of?
- How can we **improve**?



RTP Outreach and Engagement

Public opinion and involvement in development of the plan;
focus on historically marginalized communities

- Plan Chapter 2
- Appendix E: Public Outreach and Engagement
- Information, guidance, and resources for members

People

Public Engagement

The Regional Transportation Plan is responsive to current and future needs of users of the regional transportation system. To better understand these needs, PSRC worked alongside its membership, community, and other stakeholders to make sure that the views, priorities, and perspectives of the region's residents are reflected in the plan. People from all parts of the central Puget Sound region representing many races, ages and income levels have been involved in the development of the plan.

As a planning agency, PSRC makes decisions that shape transportation, land use, and the natural environment. In the past, many of these decisions have excluded the voices of people of color, people with lower incomes, and other communities who have been left out of the decision-making process. PSRC's continued focus on community engagement explores new ways for the agency to work with community members in developing priorities for its work. Engaging with community in new ways and ensuring Black residents and communities of color have a strong role in informing the plan were priorities.

This has also taken place during the global COVID-19 pandemic, impacting the ability to meet in person throughout the planning process. This challenge was an opportunity to deploy new techniques for engaging with PSRC members and communities, offering some real advantages through virtual engagement opportunities, which will be discussed further in this section.

Several key themes emerged throughout the public engagement process. PSRC members, stakeholders and community members have emphasized future transit investments and needs for accessing transit, maintenance of existing transportation infrastructure and the role the plan has in advancing racial equity. Affordability of transportation was a consistent theme, as was addressing issues caused by transportation infrastructure and systems, often in marginalized communities. Climate change and the need to reduce greenhouse gases was top of mind in youth group outreach, in public survey responses, and follow-up interviews. These topics were all taken up by the Transportation Policy Board discussions and emphasized throughout the plan.

Outreach and COVID-19

Even before the COVID-19 pandemic began, PSRC focused on an inclusive public engagement strategy to reduce barriers to participation. In response to limited opportunities for in-person engagement and public participation, some completed activities and planned strategies include:

- Offering a public opinion survey in multiple formats and languages
- Offering virtual public meetings at a range of times and days to provide options to accommodate different schedules and availability
- Posting an overview video on the project website so people could watch at a time that works for them
- Opportunities to provide public comments online, at PSRC board meetings, and other forums
- An online open house with background information about various sections of the draft plan, with opportunities to comment or ask questions
- Direct, targeted outreach to jurisdictions, Tribes, and community-based organizations



Goals for Outreach and Engagement

Goal 1: Engage a wide *range of stakeholders*

Goal 2: Carry out a robust *equitable engagement* strategy

Goal 3: Solicit *substantive input*

Goal 4: Use *new and innovative techniques*

Goal 5: Effectively *communicate public input to the boards*

Goal 6: Raise *awareness of PSRC* to residents across the region

Early Outreach Efforts



Survey



**Online Engagement
Platform**



**Virtual Outreach
Meetings**



Personal Interviews



Social Media

Outreach Methods

- Social media ads in selected zip codes – Equity Focus Areas
- Asking partner organizations to share information
- Shared with PSRC membership and interested parties

 **Puget Sound Regional Council**
on Thursday 

We want to hear from you! Take a survey to help plan the future of transportation in Puget Sound: <https://engage.psrc.org/regional-transportation-plan>



HOW WILL YOU GET AROUND?

ENGAGE.PSRC.ORG

Regional Transportation Plan

PSRC is developing the next Regional Transportation Plan, which will des...

Representative Survey



Topics

- Current and future teleworking status
- Transportation features near home and work
- Travel after COVID-19

Logistics

- 1,900+ surveys completed
- Available in 5 languages
- Results presented to Board, summarized in draft plan



PSRC Website

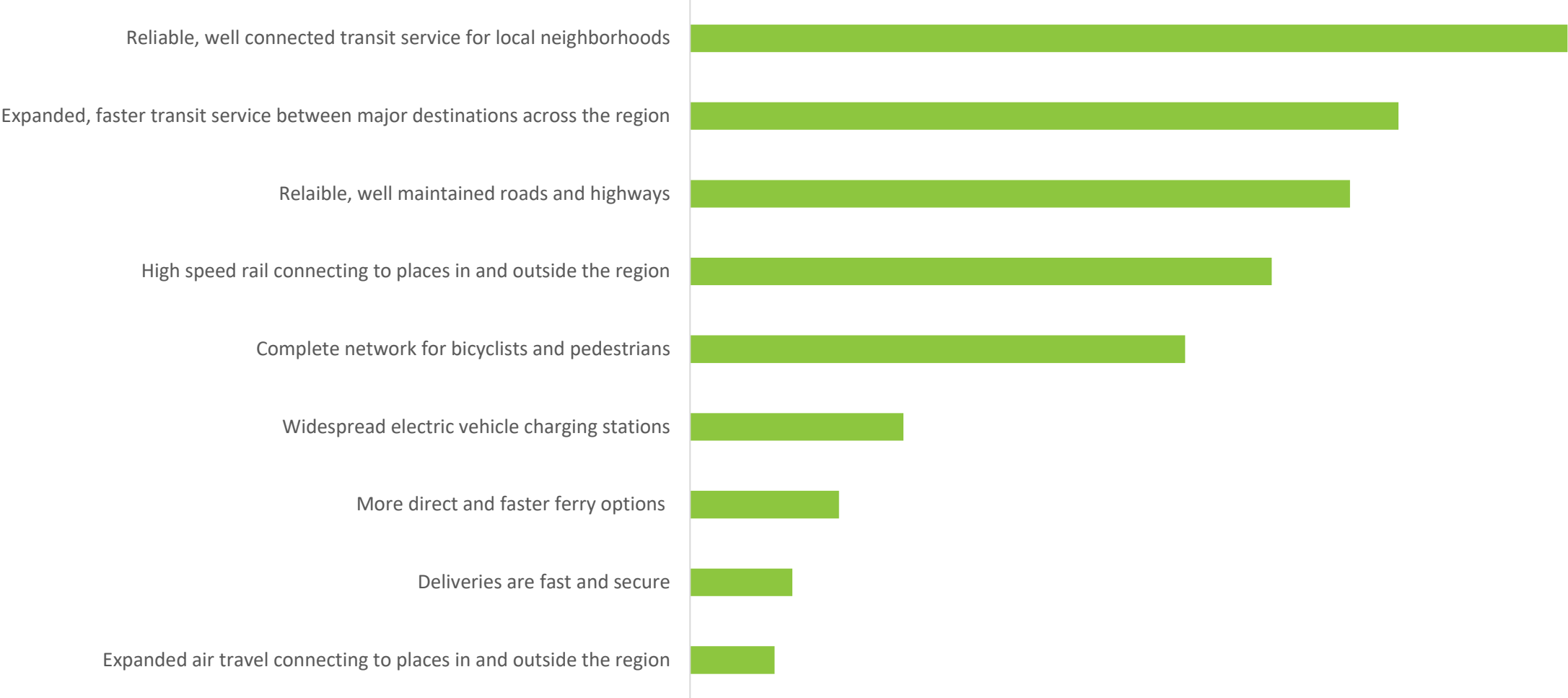
- Open to the public
- April – September 2021
- Available in 6 languages
- 1,200 responses

Questions

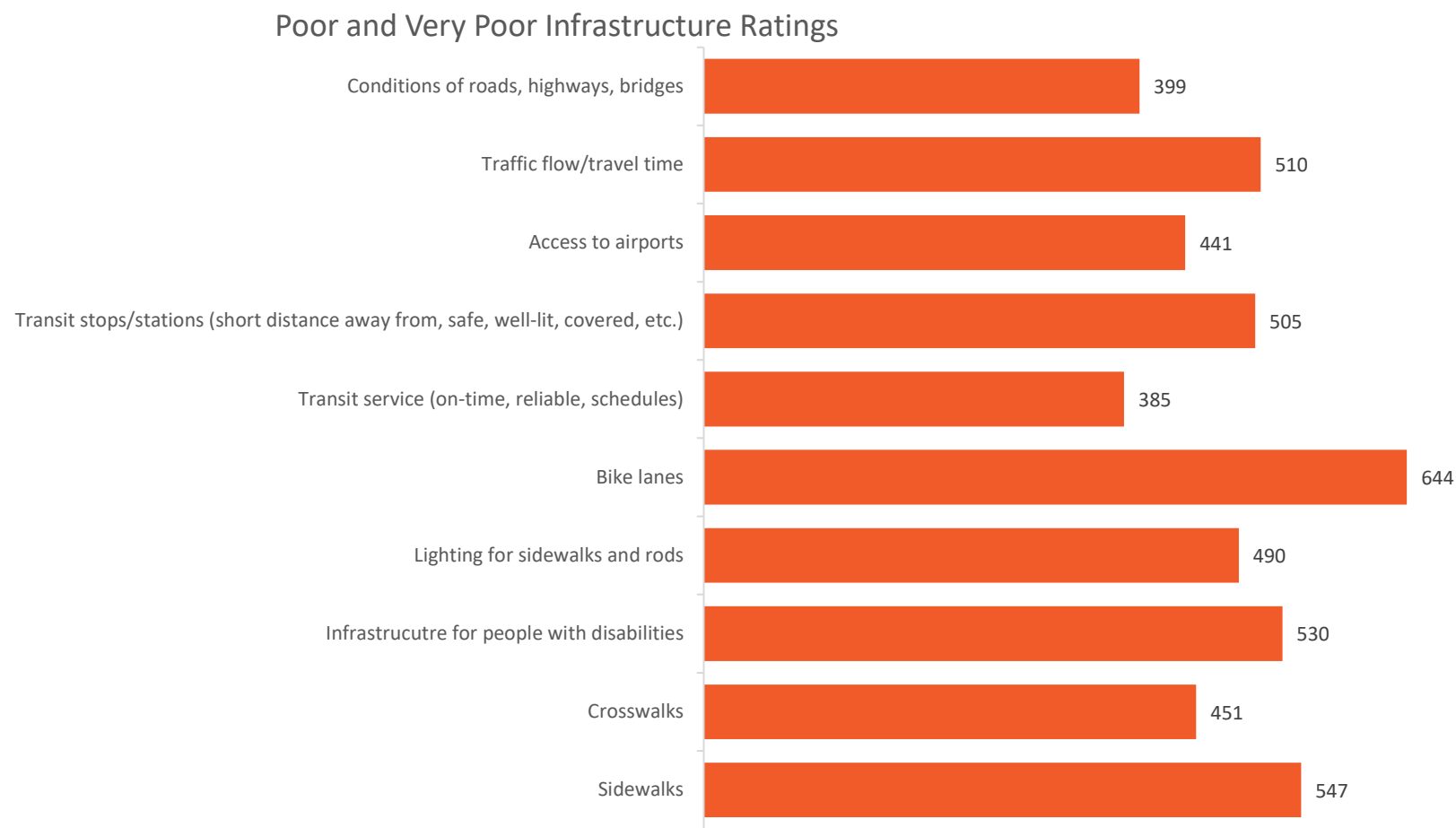
- Included same topics as representative survey
- Additional demographic questions
- Questions for people with special mobility needs

Transit system improvements and well-maintained roads and highways are top priorities

Top Priorities for the Future of Transportation



Bike lanes, infrastructure for people with disabilities and traffic are among the lowest rated infrastructure near where people live



What Have We Heard?

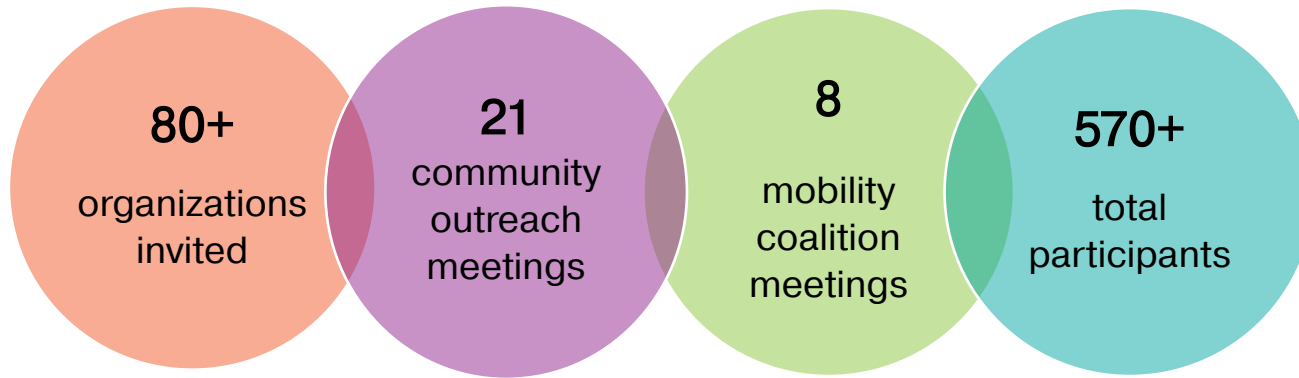
Top five priorities:

- Reliable, well-maintained roads and highways
- Reliable, well-connected transit service for local neighborhoods
- Expanded transit to major destinations
- Complete bike/ped facilities
- High speed rail

Top three motivators to use transit more:

- Shorter trip times
- Easier to access
- Extended service





Virtual Activities:

- Presentation on RTP
- Engagement session to identify mobility needs and priorities of the communities with special transportation needs

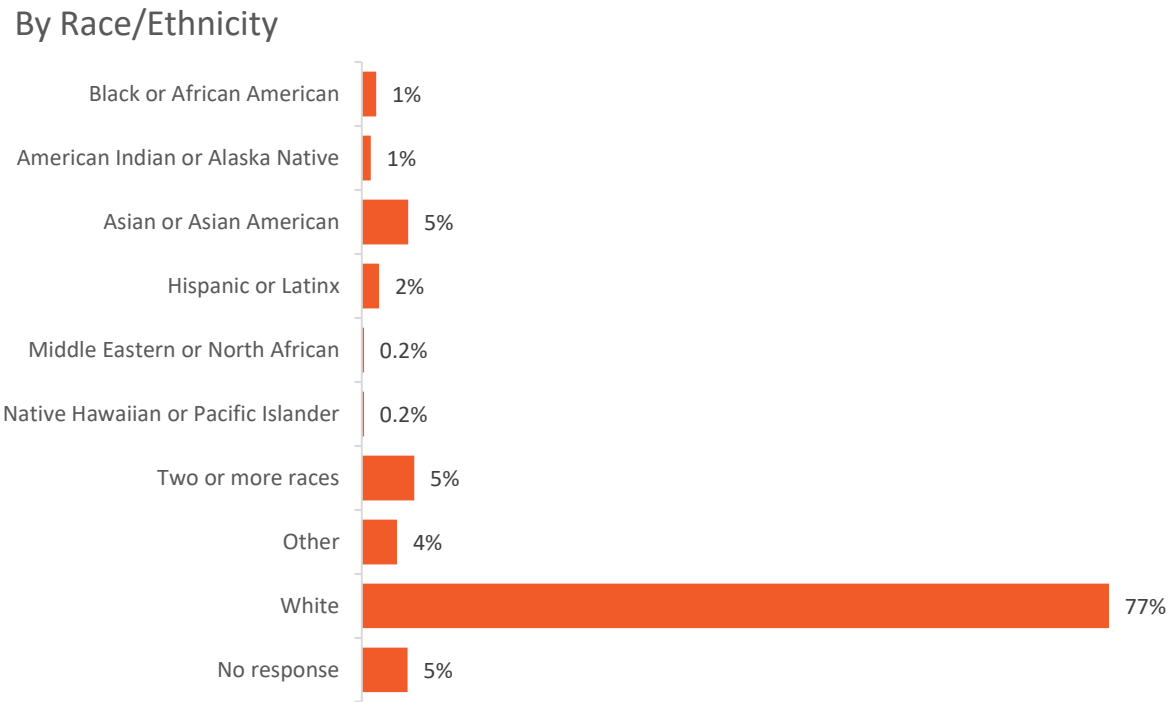
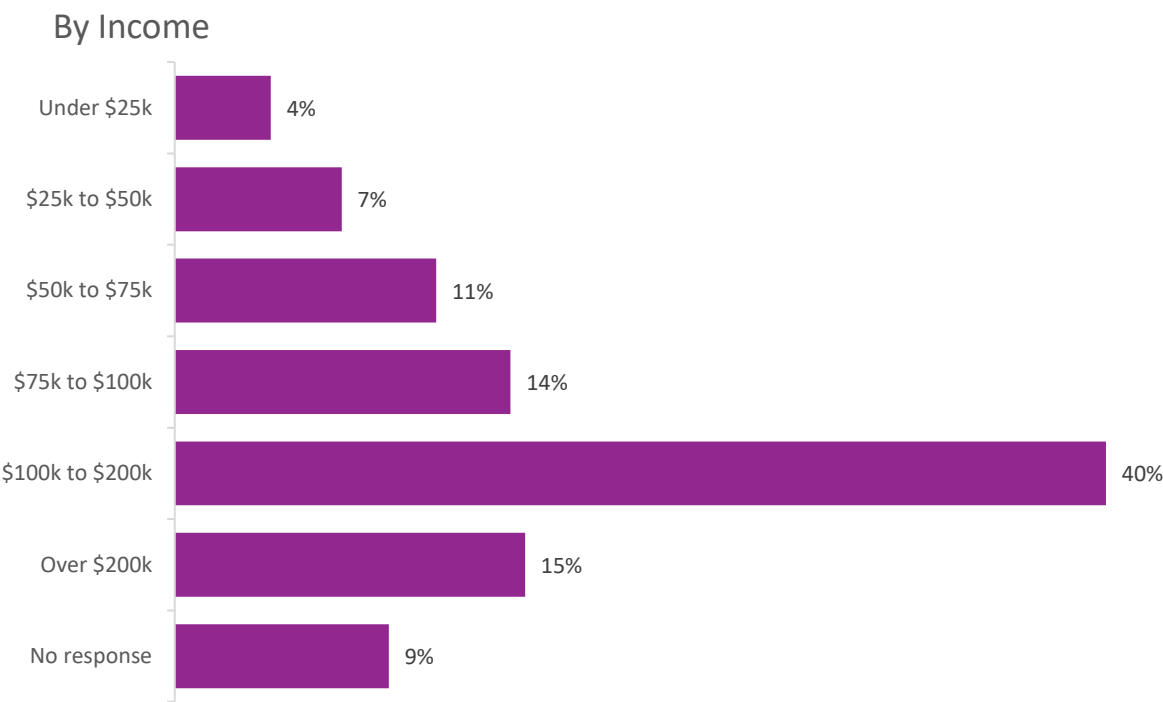
Top six mobility needs for people with special transportation needs:

- Shorter travel times
- More transportation services at times when they are needed
- Accessible information about available services and language services
- Better access to health and wellness destinations
- Affordable transportation services
- More connected ADA-accessible infrastructure (i.e., curb ramps)



Gaps in Representation in Responses

Online survey responses:



Current and Future Outreach Efforts



Virtual Public Meetings



Focus Groups



Online Open House

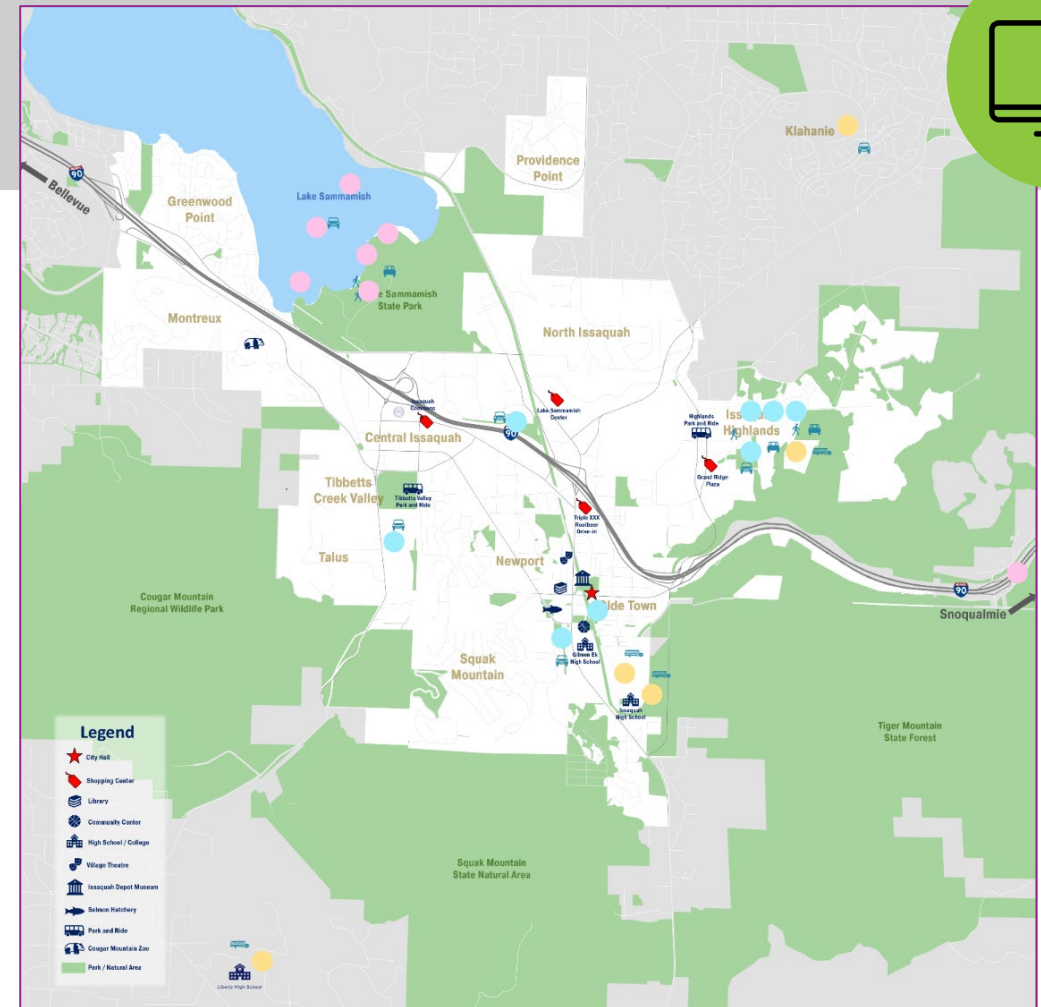
Youth Outreach

All four counties

- Met with four local youth committees

Virtual Activities:

1. Mapping exercise on frequent destinations, modes, and barriers
2. Visioning transportation in 2050



School

Frequent

Would like to go

Mode

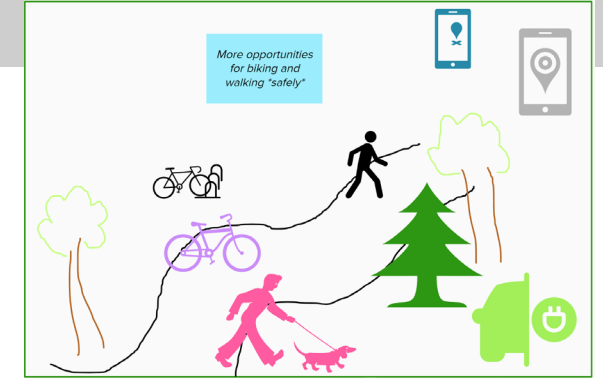
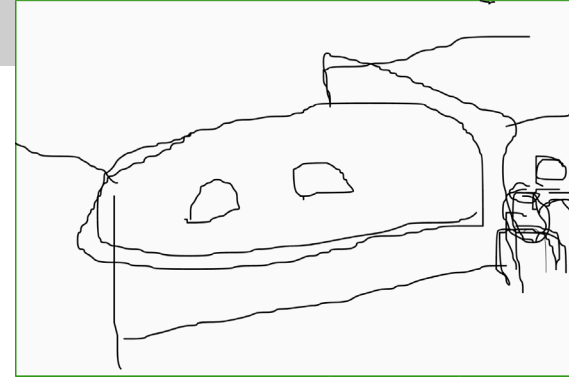
Icons for Mode: Bicycle, Pedestrian, Train, Car, Bus



Youth Outreach

Current Travel

- Destinations: parks, friends' houses, commercial centers
- Barriers: location of bus service, perceived safety, difficulty parking



Travel in 2050

- Strong interest in electric modes, particularly light rail
- Connect transit to other modes, like walking and biking



Community Focus Groups



December

- 5 virtual focus groups
- Members compensated for their time
- Report end of January 2022

Purpose:

- Understand more about the needs of community members
- Increase representation

Interviews with Major Employers and Business Interests



January and February 2022

- Connect with current networks
- Builds off work with Economic Development District Board

Purpose:

- Understand the priorities, concerns and opportunities

<https://engage.psrc.org/welcome-rtp>



OUR WORK WHAT'S HAPPENING DATA AND RESOURCES ABOUT CONTACT CENTER  



Regional Transportation Plan Online Open House

Comment through February 28

Edit Slide

Welcome to the Regional Transportation Plan Open House



PSRC is seeking public comment on the draft Regional Transportation Plan through February 28, 2022.

Learn more about the draft plan from this online open house. It is organized around key elements of the plan, including: [climate](#), [equity](#), [transit](#), [walking and biking](#), the [Coordinated Mobility Plan](#), [system performance](#), [freight](#), [safety](#), the [financial strategy](#), the plan's [visualization tool](#), [maintenance and preservation](#), and [demand management](#). Each topic includes a short video with highlights of the plan and the opportunity to comment. [View all the topics](#). Download the draft plan from the column on the right.

We will also be hosting three webinars with a live presentation and time for questions. Check back here for the Zoom links:

- [Wednesday, February 2, 8-9 am](#)
- [Tuesday, February 8, 12-1 pm](#)
- [Wednesday, February 9, 5:30-6:30 pm](#)

What is the Regional Transportation Plan?

The Regional Transportation Plan is updated every four years to describe how the four-county central Puget Sound region plans for and improves the transportation system into the future, while addressing existing needs and expected growth.

Building from the policies and goals in [VISION 2050](#), the plan outlines investments the region

2022–2050

REGIONAL TRANSPORTATION PLAN



View the draft plan documents

[Draft plan by chapter](#)

[Full Draft Regional Transportation Plan](#)

Welcome to the Online Open House for the Regional Transportation Plan

The topics below cover the elements of the draft plan. Click through to watch a short video on the topic, read that section of the draft plan, or make a comment on that topic. Your ideas are important to us.

About this site and the RTP

Welcome to the Online Open House for the Regional Transportation Plan

The topics below cover the elements of the draft plan. Click through to watch a short video on the topic, read that section of the draft plan, or make a comment on that topic. Your ideas are important to us.

About this site and the RTP



System Performance

Learn more



Equity

Learn more



Transit

Learn more



Financial Strategy

Learn more



Climate

Learn more



Safety

Learn more



System Performance

Learn more



Equity

Learn more



Transit

Learn more



Walking and Biking

Learn more



Visualizing the Transportation System

Learn more



Transportation Demand Management



Coordinated Mobility Plan

Learn more

Equity



Watch the video for an overview of equity in the draft 2022-2050 Regional Transportation Plan.

For captioning, click on the 'CC' button at the bottom of the video. Captions can be translated using the settings gear.



[Click here for Appendix F: Regional Equity Analysis.](#)

[Click here to view Chapter 2- Performing for People, Environment, and Mobility](#), equity starts on page 8 of the PDF.

2022-2050 REGIONAL TRANSPORTATION PLAN



View the draft plan documents

[Draft plan by chapter](#)

[Full Draft Regional Transportation Plan](#)

[Appendices](#)

Draft Plan Comment Period

January 13 – February 28, 2022

Online Open House

- Information about the draft plan
- Comment portal for public comments
- Virtual public Meetings: 2/2, 2/8, 2/9

Presentations to interested groups & PSRC committees

Discussion on Approach

- Are there **elements missing** or **that should be expanded**?
- Are there **additional approaches** that we should be aware of?
- How can we **improve**?

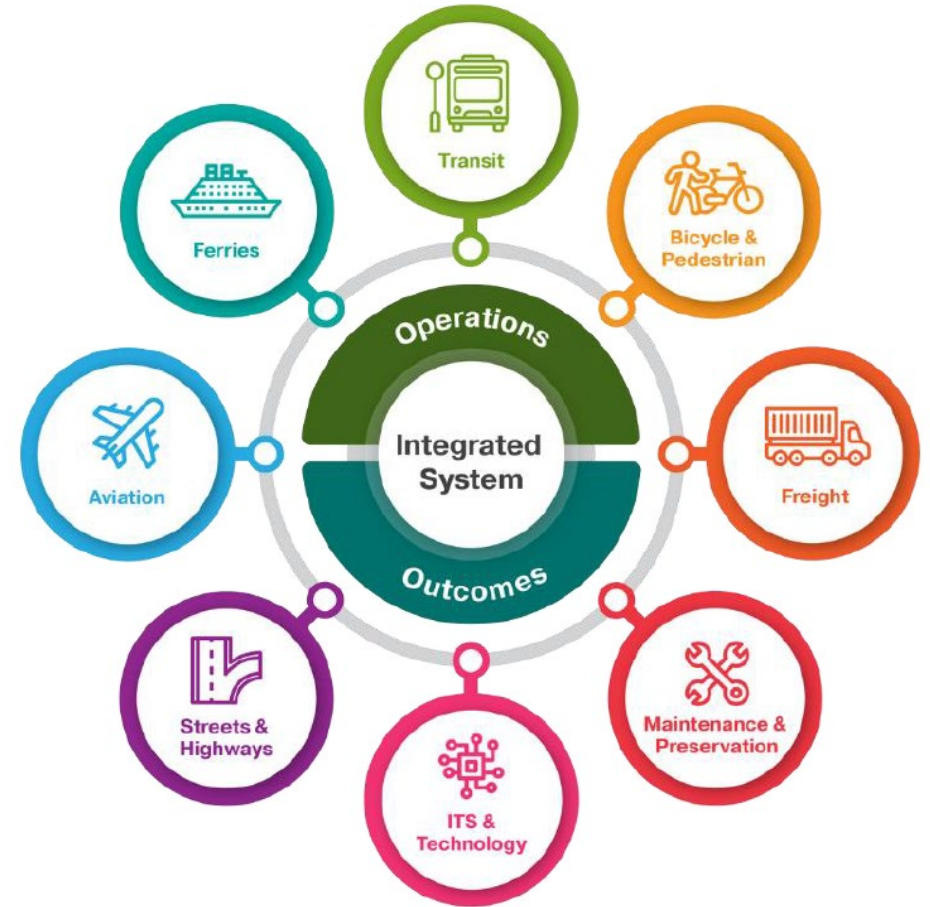


Regional Transportation Plan & Equity

2022–2050

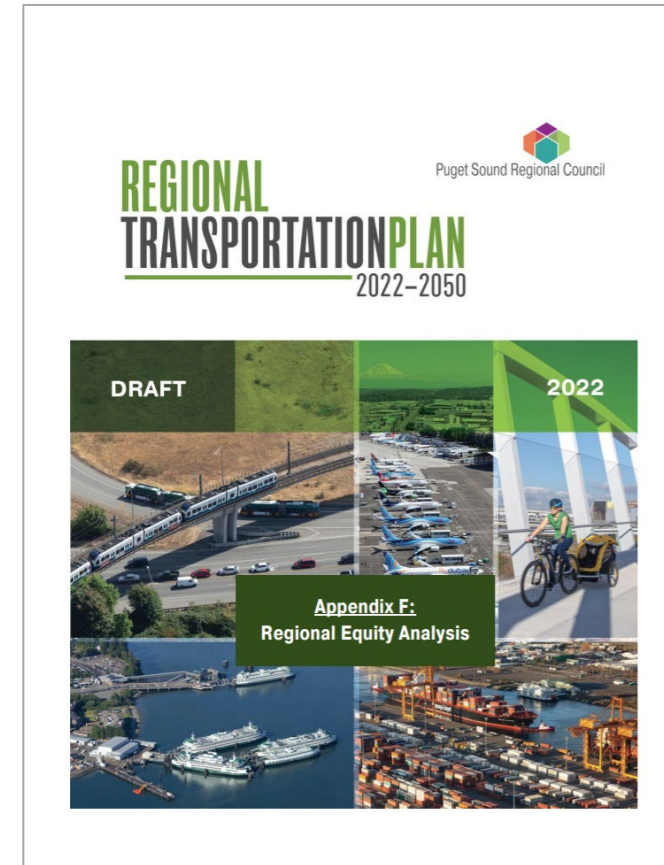
REGIONALTRANSPORTATIONPLAN

- Builds from VISION 2050
- Elevates equity throughout the plan—all sections of the plan identify potential plan impacts on historically marginalized and underserved communities
- The plan provides resources for project-level analysis and mitigation to help advance equity
- PSRC Visualization Tool:
<https://experience.arcgis.com/experience/a587d27d1c444a6e891fe1b58508622d/page/Future-Conditions/>



RTP Equity Analysis

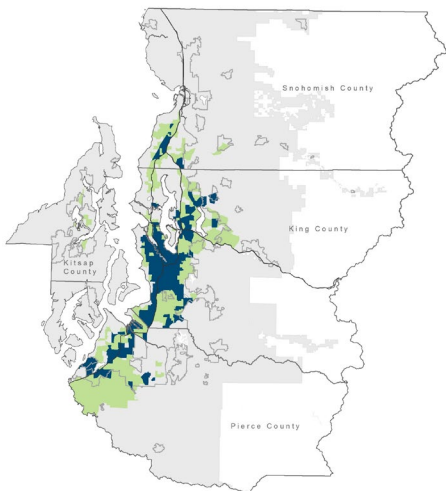
- Provides an evaluation of potential benefits and burdens of proposed transportation policies and projects on historically marginalized communities
- **Equity Focus Demographics**
 - People of color
 - People with low incomes
 - People with disabilities
 - Youth (ages 5-17)
 - Older adults (aged 65 and above)
 - People with limited English proficiency (LEP)



- **Region**
- **Equity Focus Areas**
 - Above 50% / Above Regional Average People of Color
 - Above 50% / Above Regional Average People with Low Incomes
 - Above Regional Average People with Disabilities
 - Above Regional Average Youth (age 5-17)
 - Above Regional Average Older Adults (aged 65+)
 - Above Regional Average People with Limited English Proficiency
- **Non-Equity Focus Areas**



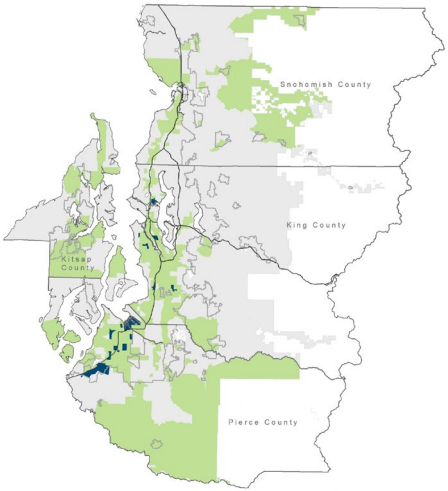
Equity Focus Areas



People of Color

People of Color
Regional Average: 35.9%

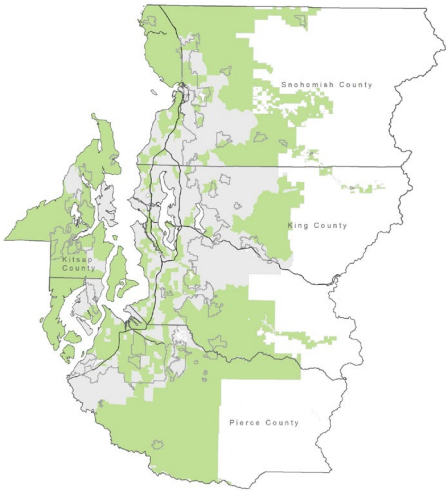
- Above 50% Threshold
- Above Regional Average
- Below Thresholds
- Urban Growth Area
- Forest Lands



People with Low Incomes

People with Low Incomes
Regional Average: 20.7%

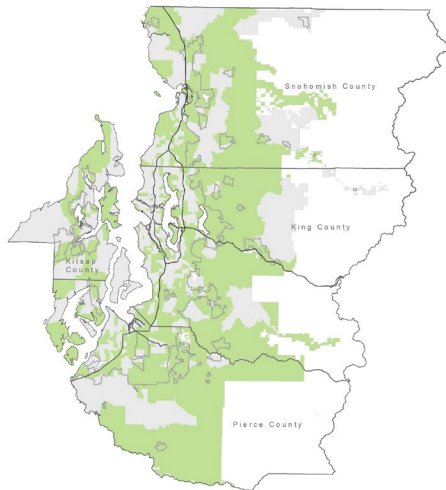
- Above 50% Threshold
- Above Regional Average
- Below Thresholds
- Urban Growth Area
- Forest Lands



People with Disabilities

People with Disabilities
Regional Average: 11.0%

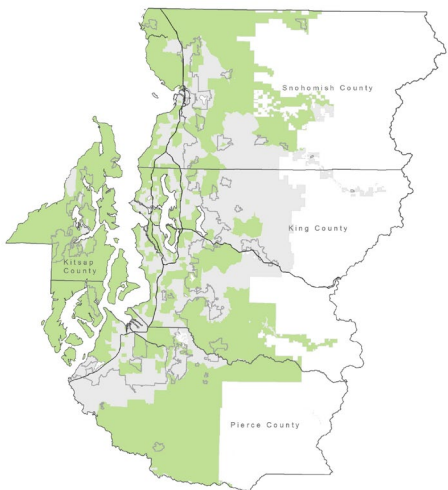
- Above Regional Average
- Below Regional Average
- Below Thresholds
- Urban Growth Area
- Forest Lands



Youth (Ages 5-17)

Youth (Ages 5-17)
Regional Average: 15.4%

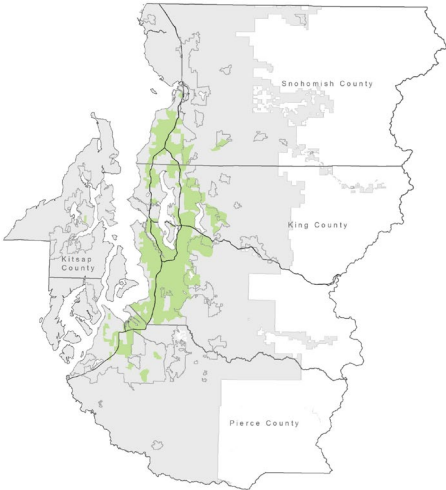
- Above Regional Average
- Below Threshold
- Urban Growth Area
- Forest Lands



Older Adults (Aged 65+)

Older Adults (Aged 65+)
Regional Average: 13.4%

- Above Regional Average
- Below Threshold
- Urban Growth Area
- Forest Lands



People with Limited English Proficiency

People with LEP
Regional Average: 8.5%

- Above Regional Average
- Below Threshold
- Urban Growth Area
- Forest Lands



Future Conditions

The forecast is based on the current geographic distribution of equity focus areas

Transportation Measures

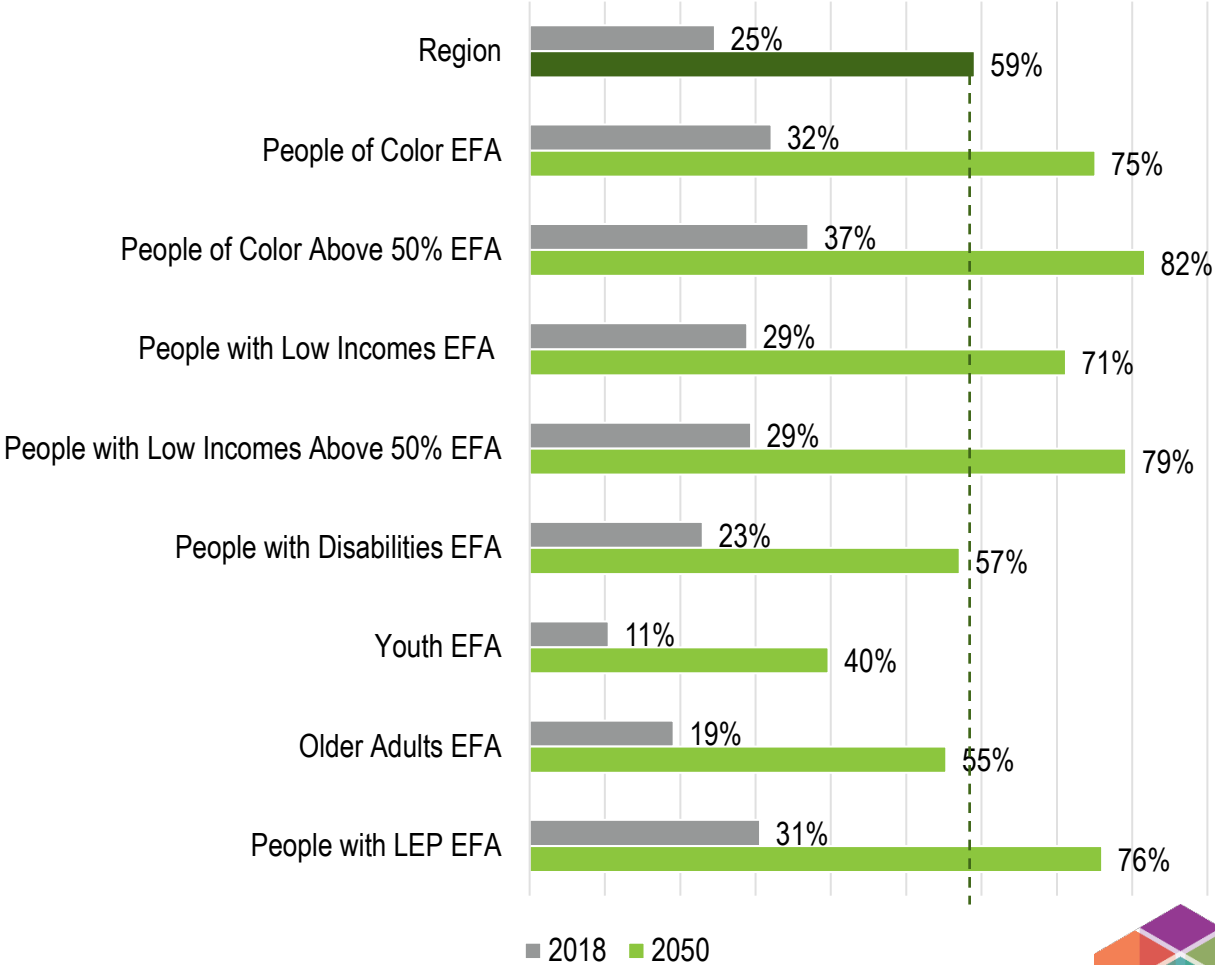
- Transportation Mode Share
- Access to Transit
- Walking and Biking
- Vehicle Travel
- Transportation Affordability



Key Highlights: Access to Transit

In 2050, areas with higher concentrations of people of color and people with low incomes are forecasted to have the **greatest access to High-Capacity Transit (HCT) stations**.

Percentage of Households within ½ mile of HCT Stations

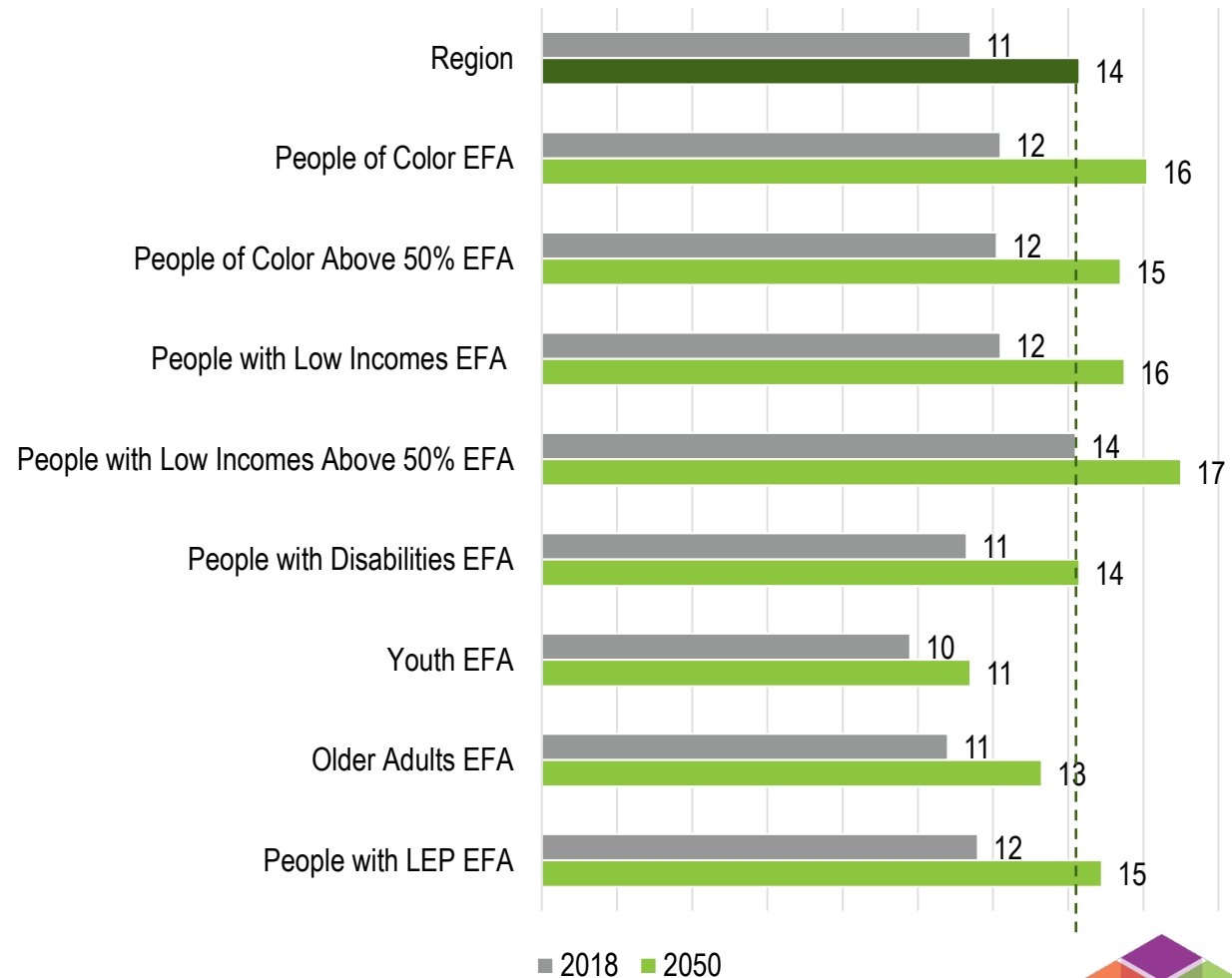


Key Highlights: Walking and Biking

Currently, arterials in people of color, people with low incomes, and people with LEP equity focus areas have **complete sidewalks at higher rates** than the regional average (41%)

By 2050, residents of people of color and people with low incomes equity focus areas are projected to **walk and bike the most** among other equity populations.

Time Walking and Biking Daily per Person (In Minutes)



Key Highlights: Vehicle Travel

Compared to today, residents of most equity focus areas are projected to **drive less in 2050**, except the areas with relatively high concentrations of youth and older adults.

Average Vehicle Miles Driven Daily per Person

	2018	2050	% Change
Region	17	13.7	-19%
People of Color EFA	15.1	11.5	-24%
Non-People of Color EFA	18.6	15.6	-16%
People of Color Above 50% EFA	14.6	11.8	-19%
Non-People of Color Above 50% EFA	17.6	14.2	-19%
People with Low Incomes EFA	15.2	11.7	-23%
Non-People with Low Incomes EFA	18.3	15.3	-16%
People with Low Incomes Above 50% EFA	11.6	9.5	-18%
Non-People with Low Incomes Above 50% EFA	17.1	13.8	-19%
People with Disabilities EFA	16.9	13.2	-22%
Youth EFA	18.7	16.1	-14%
Older Adults EFA	17.6	14.3	-19%
People with LEP EFA	15.6	12.2	-22%



Key Highlights: Transportation Affordability

2022–2050
REGIONAL TRANSPORTATION PLAN

By 2050, residents of most equity focus areas are forecast to face an **increase in transportation costs**, but at rates similar or lower than the regional average (+29%).

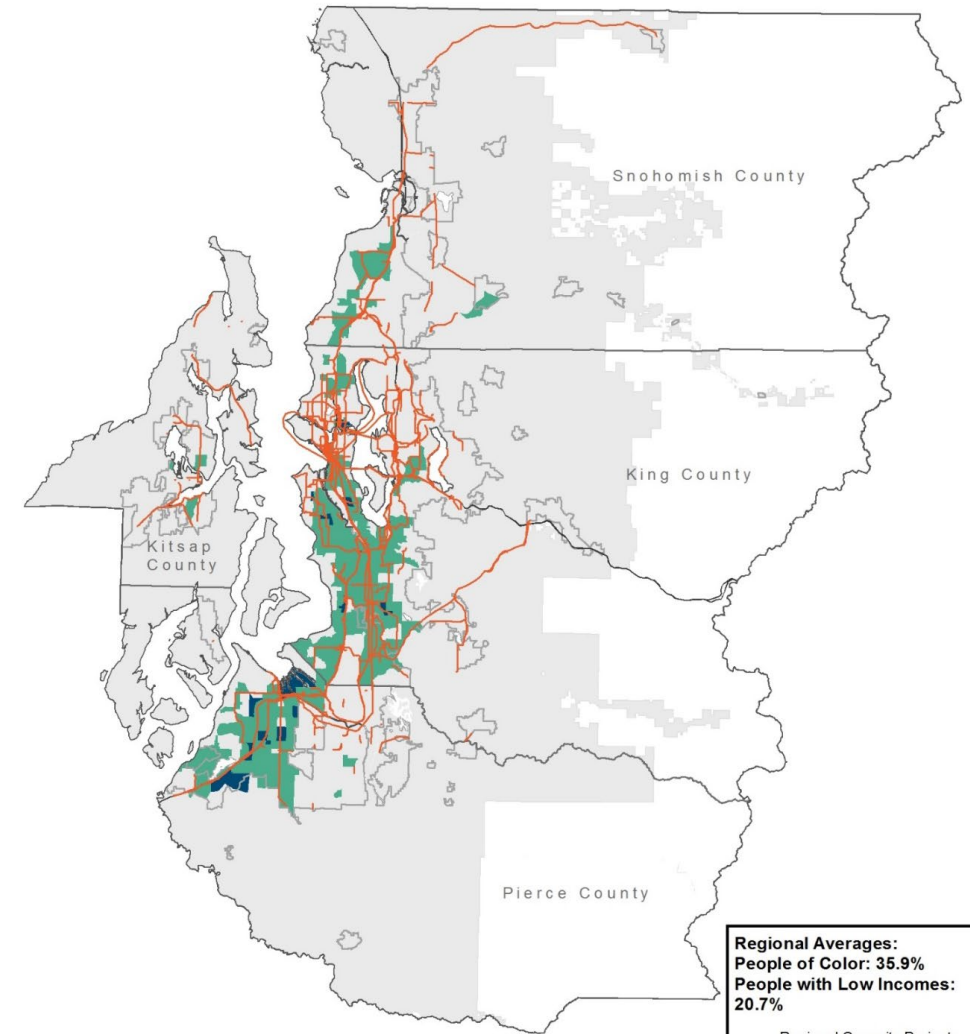
Annual Out-of-Pocket Transportation

	2018	2050	% Change
Region	\$ 2,900	\$ 3,730	+29%
People of Color EFA	\$ 2,590	\$ 3,240	+25%
Non-People of Color EFA	\$ 3,140	\$ 4,180	+33%
People of Color Above 50% EFA	\$ 2,640	\$ 3,410	+29%
Non-People of Color Above 50% EFA	\$ 2,960	\$ 3,810	+29%
People with Low Incomes EFA	\$ 2,590	\$ 3,210	+24%
Non-People with Low Incomes EFA	\$ 3,120	\$ 4,160	+33%
People with Low Incomes Above 50% EFA	\$ 2,060	\$ 2,660	+29%
Non-People with Low Incomes Above 50% EFA	\$ 2,920	\$ 3,760	+29%
People with Disabilities EFA	\$ 2,840	\$ 3,500	+23%
Youth EFA	\$ 3,350	\$ 4,460	+33%
Older Adults EFA	\$ 2,970	\$ 3,860	+30%
People with LEP EFA	\$ 2,720	\$ 3,500	+29%



Proximity to Regional Capacity Projects

90% of census tracts within people of color and people with low incomes equity focus areas are touched by one or more regional capacity projects.



2022-2050 Regional Capacity Projects
(Financially Constrained) Map

- Are the potential equity issues **clear** and **appropriately identified**?
- Are there **elements missing** or **that should be expanded**?
- Are there **additional resources** or **measures** that we should be aware of?
- What can we **improve**?



Next Steps

Public comment period through February 28th

- Visit RTP webpage at: <https://engage.psrc.org/welcome-rtp>

Welcome to the Regional Transportation Plan Open House



PSRC is seeking public comment on the draft Regional Transportation Plan through February 28, 2022.

Learn more about the draft plan from this online open house. It is organized around key elements of the plan, including: [climate](#), [equity](#), [transit](#), [walking and biking](#), the [Coordinated Mobility Plan](#), [system performance](#), [freight](#), [safety](#), the [financial strategy](#), the plan's [visualization tool](#), [maintenance and preservation](#), and [demand management](#). Each topic includes a short video with highlights of the plan and the opportunity to comment. [View all the topics](#). Download the draft plan from the column on the right.

We will also be hosting three webinars with a live presentation and time for questions. Check back here for the Zoom links:

- [Wednesday, February 2, 8-9 am](#)
- [Tuesday, February 8, 12-1 pm](#)
- [Wednesday, February 9, 5:30-6:30 pm](#)

What is the Regional Transportation Plan?

The Regional Transportation Plan is updated every four years to describe how the four-county central Puget Sound region plans for and improves the transportation system into the future, while addressing existing needs and expected growth.

Building from the policies and goals in [VISION 2050](#), the plan outlines investments the region is making in transit, rail, ferry, streets and highways, freight, bicycle and pedestrian and other systems to ensure the safe and efficient movement of people and goods. It lays the region on the path to:

- reduce greenhouse gas emissions and meet regional climate goals
- help create a healthier, safer, more equitable system with access to an expanded transit network
- prepare for the upcoming updates of local comprehensive plans expected by 2024

A long-range Regional Transportation Plan is required in order for federal transportation funds to continue to flow in the region.

With its many partners and stakeholders, PSRC undertook a two-year process to develop the draft Regional Transportation Plan, which addresses the needs of people and goods movement through 2050. The process included extensive research, data collection and analysis, board discussions, and public engagement.

2022–2050 **REGIONAL TRANSPORTATION PLAN**



View the draft plan documents

Draft plan by chapter

Full Draft Regional Transportation Plan

Appendices

How to comment

- Use the [comment form](#)
- Email: transportation@psrc.org
- US Mail: 1011 Western Ave #500, Seattle, WA 98104



Schedule



Three public meetings with a live presentation and Q&A session:

- Wednesday, February 2, 8:00-9:00 am
- Tuesday, February 8, 12:00-1:00 pm
- Wednesday, February 9, 5:30-6:30 pm



Ben Bakkenta
bbakkenta@psrc.org
206-971-3286

Jean Kim
jkim@psrc.org
206-971-3052

2022–2050
REGIONAL TRANSPORTATION PLAN



Puget Sound Regional Council