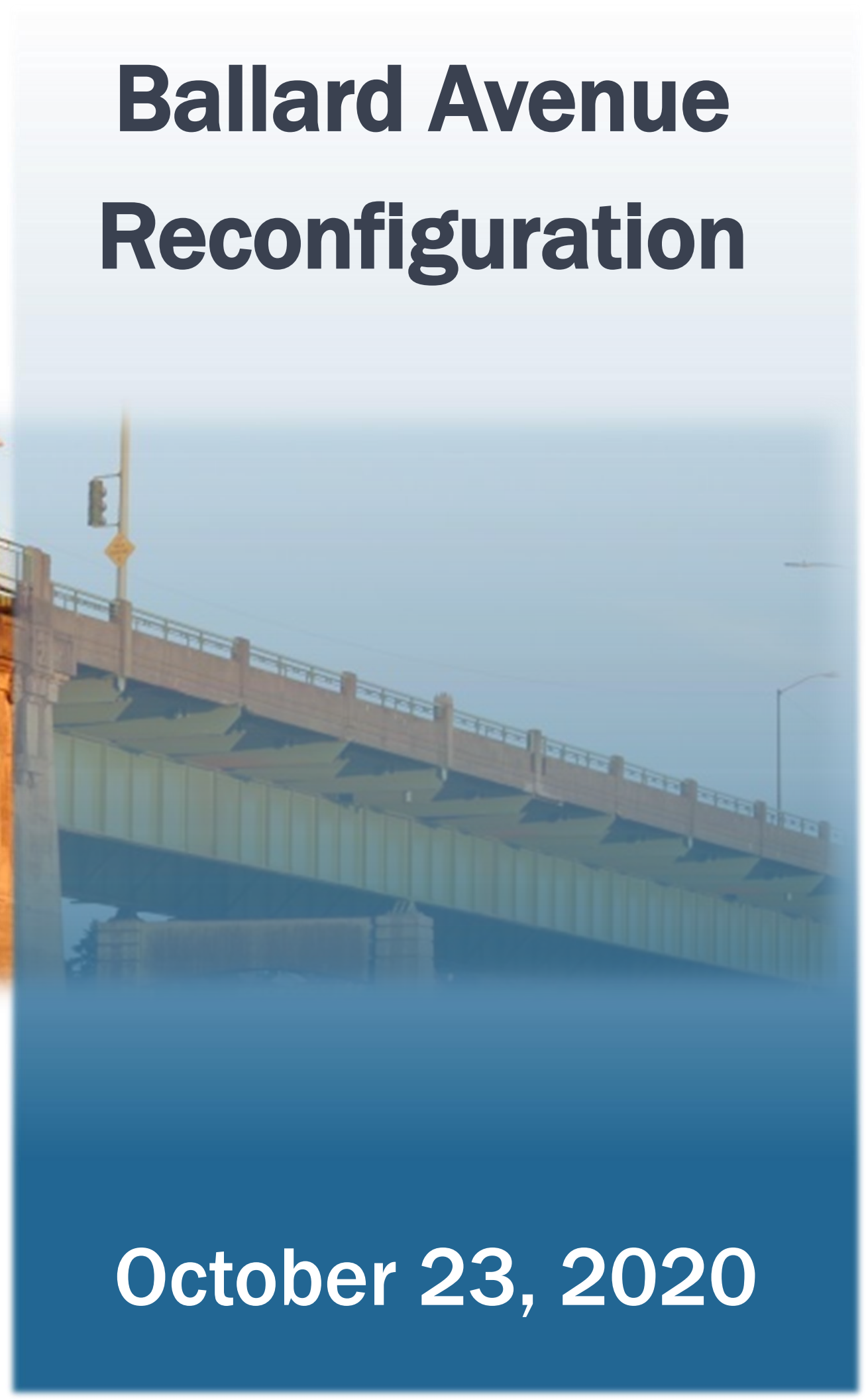


Ballard Avenue Reconfiguration



October 23, 2020



October 23 Agenda

Precedent Document & Public Outreach	10:30 – 10:32 AM
Street Cafes and Merch Displays are Here But There is Conflict	10:32 – 10:35 AM
The Grand Compromise	10:35 – 10:40 AM
The Implementation, Adjustments, & Looking Ahead	10:40 – 10:45 AM

Researching Precedents From Around the Country

- Tampa, FL
 - Implemented pilot program
 - Fully closed one road
 - Provided Jersey Barriers and picnic tables
- Portland, OR
 - Turned parking lanes in street cafes and plazas
 - Streamlined permitting
 - Provided businesses with a “Toolkit”
- Cincinnati, OH
 - Waived permit fees
 - Provided Jersey Barriers
- On June 16, 2020 the Ballard Alliance provided a 6-page precedents document to City Council, the Mayor’s Office, and Seattle Department of Transportation to help encourage the City to allow these types of uses and to provide a potential roadmap as to who to implement such a program in Seattle.





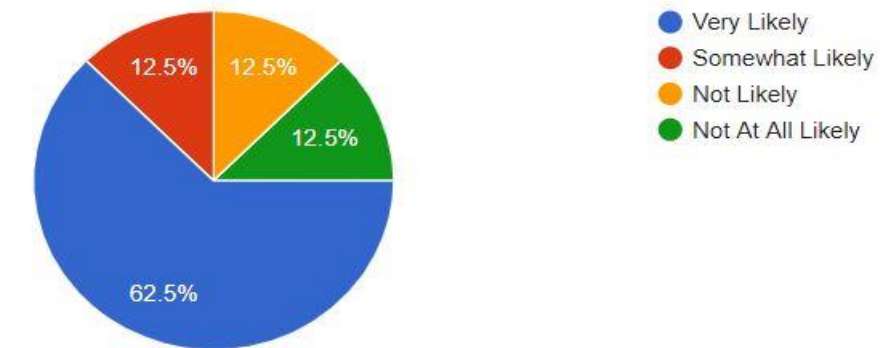
Public Outreach

Public Outreach Using Google Docs

- On June 26, 2020, the Alliance sent a 15-question survey to Ballard Ave businesses
 - Do you plan to apply for an SDOT permit for street café/merch display?
 - Would you support a street closure?
 - Would you be willing to re-route deliveries around street closure?
 - How concerned are you regarding parking lose?
- 24 Ballard businesses responded to survey
 - Many supported street closure
 - Concerns around deliveries and lose of parking
 - Mid-block private parking access
 - Overall excitement for street cafes/merch displays and potential street closure

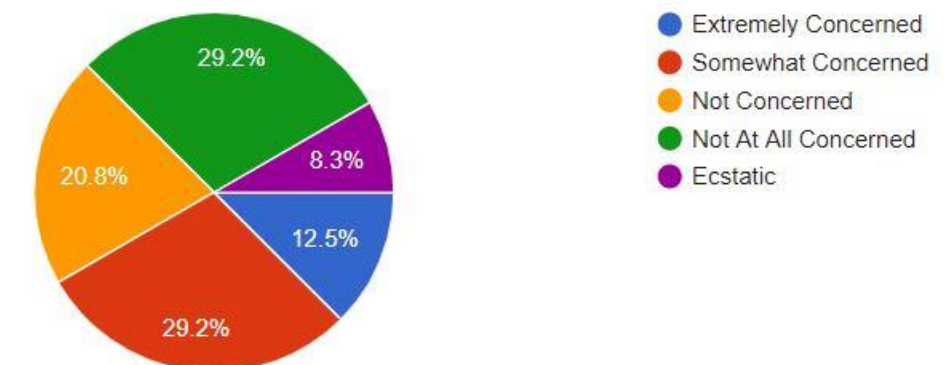
We've heard from many businesses that are interested in temporary street closures along Ballard Avenue. If a street closure would add further expansion of dining service and retail operations into the roadway, beyond what the temporary permits allow, how likely would you be to participate?

24 responses



Temporary street closures along Ballard Avenue would reduce the amount of available on-street parking during the closure. How concerned are you about on-street parking reductions?

24 responses





Street Cafes & Merch Displays Are Here

SDOT Announces Free Permit for Street Cafes/Merchandise Displays on June 26, 2020

- Ballard businesses were quick to apply for their permits and began setting up their outdoor cafes and displays.
 - Upwards of 15 permits submitted in the first week alone
- Immediate benefit for restaurants
 - Previously they were only open to take out
 - They could now accommodate dine-in eaters (outside)
- Very few retailers chose to take advantage of this opportunity
 - Three applied for their permit and set up merch display
 - Capacity limitations weren't an issue for many retailers
- Immediate issues arose on Sundays
 - Businesses weren't moving for the Sunday Farmer's Market
 - The Market worked with businesses until relations frayed
 - After nearly two months of negotiations, the Alliance brokered a compromise between businesses, the Market, and SDOT.





The Grand Compromise

The Ballard Alliance, Ballard Ave Businesses, Farmer's Market, and SDOT Find a Compromise

- Factors at play:
 - On July 22, 2020, Mayor Durkan announces free Street Closure Permit and SDOT opens applications on July 29, 2020
 - The Alliance had ruled out a full street closure:
 - Mid-block private parking lots need access
 - Concerns over deliveries
 - Staffing and infrastructure concerns/limitations
- The Grand Compromise:
 - The Alliance applied for a Street Closure Permit that would:
 - Reconfigure Ballard Ave from two-way to one-way
 - Allow permitted businesses with Street Closure to expand their street cafes/merch displays from 7' in depth to 12' in depth
 - Confirmed all permitted businesses with Street Closure would remove street cafes/merch displays during Farmer's Market hours





Implementation & Adjustments

Street Cafes, Merchandise Displays and One-Way

- SDOT provided the Alliance with a Traffic Control Plan
- The Alliance purchased necessary street signage and installed them on September 1, 2020
- Adjustments
 - Weighed down signage with cinder blocks and chains
 - Signage was updated twice to gain full compliance from drivers
 - SPD and Parking Enforcement had to be notified of this reconfiguration and length of permit
 - Google Maps, etc. needed to be updated to avoid routing drivers the wrong way
- Looking forward
 - The Alliance has been working with SDOT on winterizing street cafes/merch displays
 - Tent sides
 - Heating
 - Lighting





Thank you!