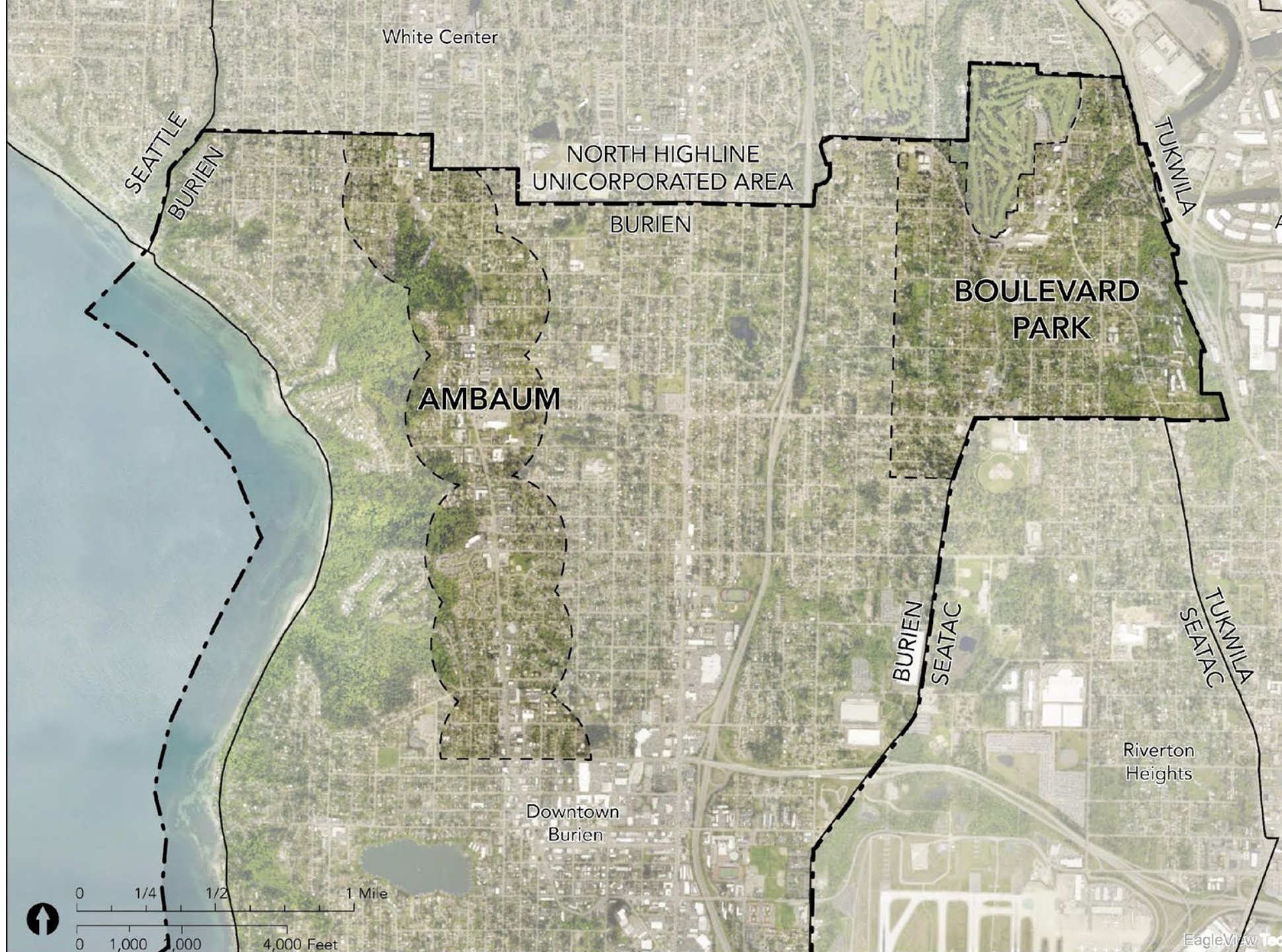




AMBAUM AND BOULEVARD PARK COMMUNITY PLANS

Alex Hunt, Planner – City of Burien

OVERVIEW



PROJECT PURPOSE

Subarea plan and rezones for:

Ambaum Corridor: transit-oriented development (TOD) planning

Boulevard Park: thriving mixed-use business district and supportive land uses

...that foster complete neighborhoods equitably



INFORMAL CONVERSATIONS

- Residents
- Business owners
- Non-profit organizations
- Staff from other public agencies/jurisdictions
- Developers
- Burien board and commission members

ADVISORY GROUP

Commercial core is underutilized

Displacement - small businesses - keep

Vacant land - not physical displacement

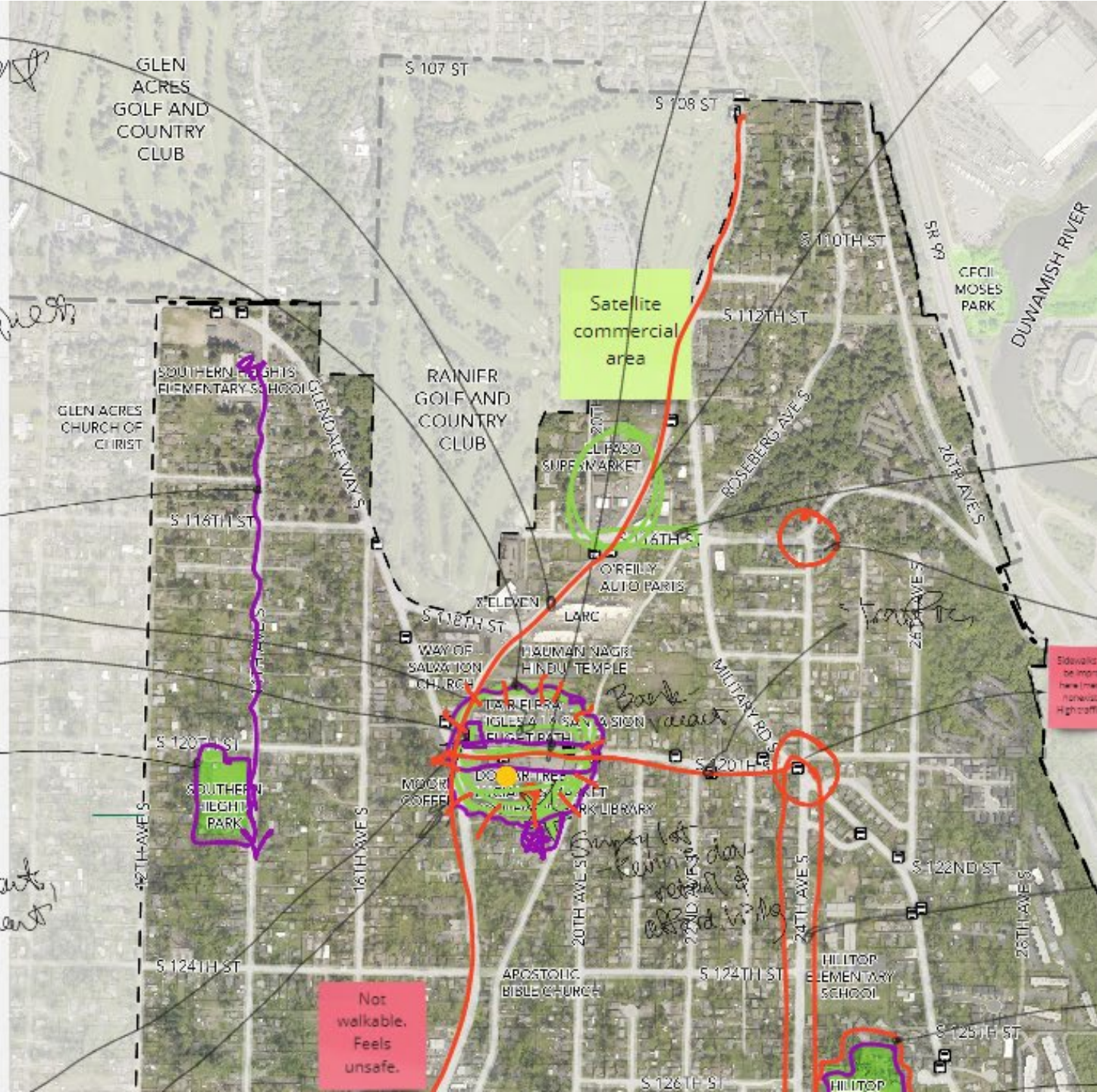
Commercial Core

Bar & shops
Kids path
Retail opportunity - ASI

Needs improvement, lease agreement hold up

walking environment

Denser urban village - thoughtful keep business



Unutilized Park
Water Dept want to make improvements and make it a park

Underutilized

Not walkable, Feels unsafe.

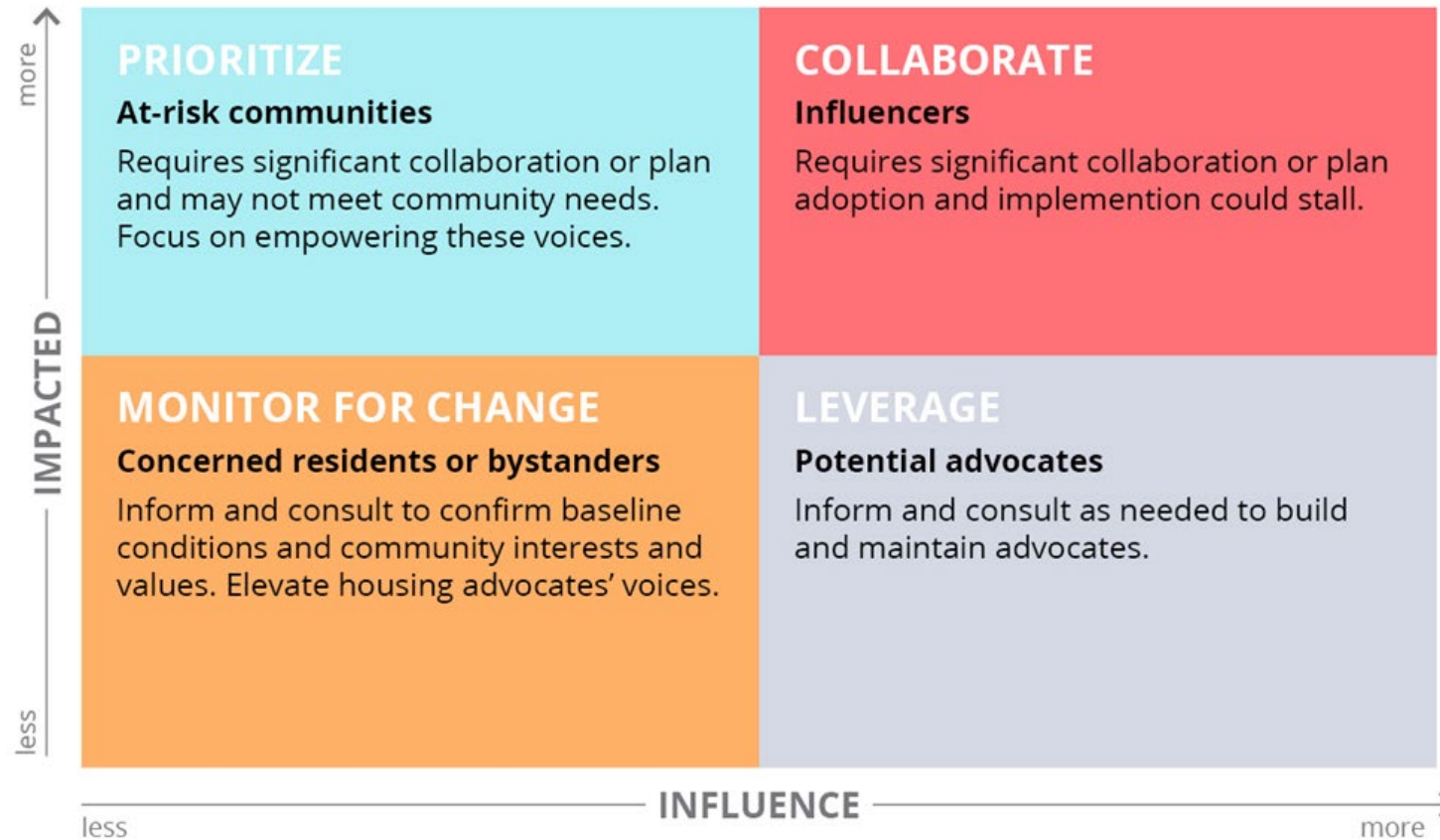
Should be more here the narrow Highcroft

ONLINE INTERACTIVE MAP

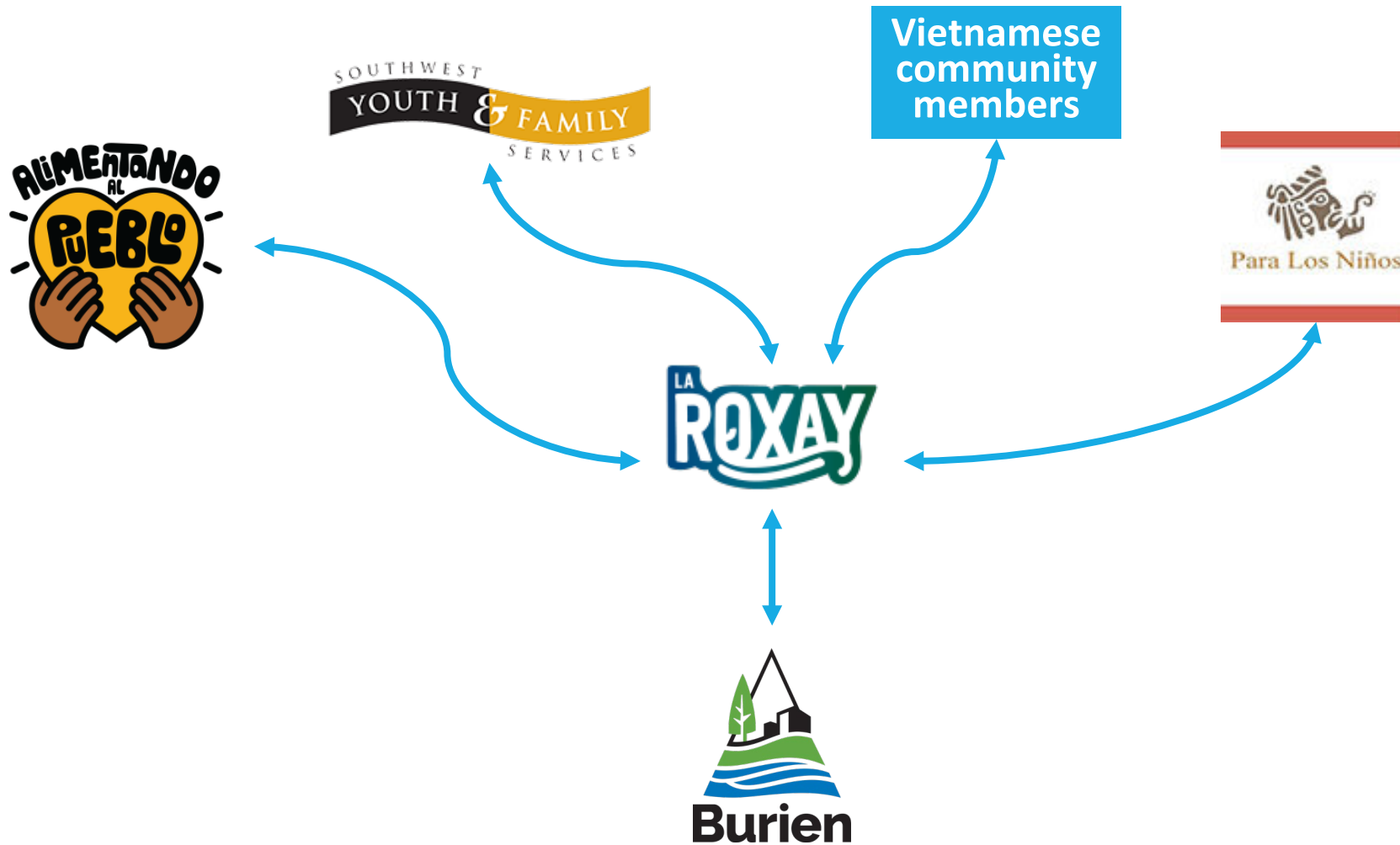


EQUITY FRAMEWORK

Stakeholder Prioritization



FOCUSED ENGAGEMENT



THANK YOU!

alexh@burienwa.gov