

Plan Review Manual Update

Regional Staff Committee • September 3, 2020



Puget Sound Regional Council

Today's Meeting

- VISION 2050 & Plan Review Process
- Manual Update Project Approach



Plan Review Process

- **GMA requires PSRC to review and certify local comprehensive plans, countywide planning policies, and regional transit plans for conformity with:**
 - **Regional guidelines and principles (MPPs)**
 - **Regional Transportation Plan**
 - **GMA transportation-related requirements**
- **PSRC also certifies subarea plans for regional centers**

1995

First plans
certified



Plan Review Process

- 2003 – PSRC adopted a revised Policy & Plan Review Process
- Plan Review Manual (2010, 2014)
 - Reporting tools
 - Reference appendices



Plan Review Manual

A Resource to Assist with Plan Development and Review - including Certification

reporting tool B: local comprehensive plans

part one: checklist

General Multicounty Planning Policies

- ✓ Describe planning coordination with other jurisdictions and agencies (including, where appropriate tribes) (MPP-G-1) ☐
- ✓ Describe efforts to identify existing and new funding for infrastructure and services (MPP-G-3) ☐

The Environment

Stewardship ☐

- ✓ Address the natural environment in all aspects of local planning, basing decision-making on the environmental best-information available; incorporate regionwide planning initiatives, such as the Department of Ecology's water resource inventory areas (WRIA) process – or actions based on guidance from the International Council for Local Environmental Initiatives (ICLEI) (MPP-En-1 through 7; En-Action-11) ☐

Earth & Habitat ☐

- ✓ Identify open space areas and develop programs for protecting and/or acquiring these areas (MPP-En-8 and 9) ☐
- ✓ Coordinate planning for critical areas and habitat with adjacent jurisdictions (MPP-En-9 through 11) ☐
- ✓ Include provisions for protecting and restoring native vegetation (MPP-En-12) ☐

Water Quality ☐

- ✓ Take actions to maintain hydrological functions within ecosystems and watersheds, including restoration of shorelines and estuaries, as well as reducing pollution in water (MPP-En-13 through 16) ☐

Air Quality ☐

- ✓ Include policies and implementation actions to address federal and state clean air laws and the reduction of pollutants including greenhouse gases (MPP-En-17 through 19) ☐
- ✓ Incorporate the Puget Sound Clean Air Agency's adopted growth management policies into the comprehensive plan (see Appendix-E-1) (MPP-En-17 through 19) ☐

Climate Change ☐

- ✓ Include specific provisions to reduce greenhouse gas emissions; include provisions addressing adaptation to the effects of climate change (MPP-En-16, 20 through 25; MPP-DP-45, MPP-T-5 through 7; MPP-PS-1, 12, 13; RCW 80.80.020) ☐



VISION 2050 Implementation

RC-Action-1, Plan Updates: PSRC will support efforts to update countywide planning policies, local comprehensive plans, and infrastructure and utility plans, including providing updated plan review and certification guidance.

VISION 2050 Policy Changes

- **Climate change**
- **Housing**
- **Displacement (residential and commercial)**
- **Racial equity**
- **Health in planning**
- **Regional collaboration, especially with Tribes, military partners, and others**
- **Jobs/housing balance**



Upcoming Planning Work



Plan Review Manual Update

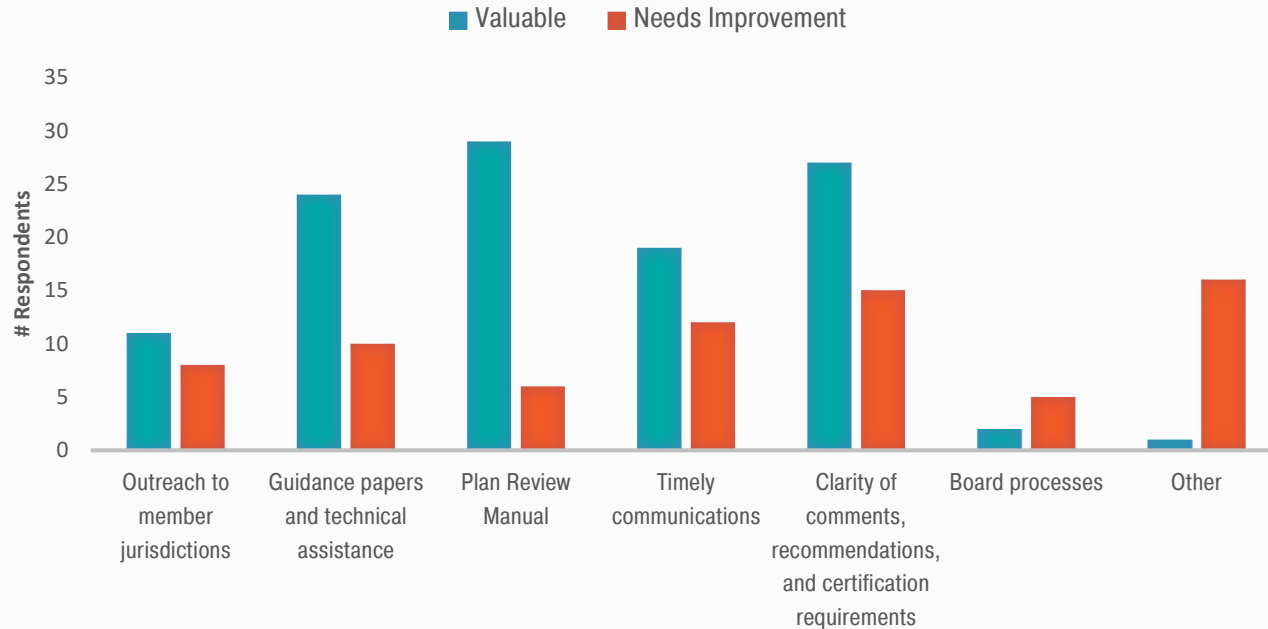
Project Scoping

- 2016 Taking Stock → assessed VISION 2040 implementation and plan review/certification process
- VISION 2050 plan development → policy discussions informed potential changes to plan review materials



Taking Stock Findings

PLAN REVIEW RESOURCES



Project Guiding Principles

- Advance the Growth Management Act and VISION 2050
- Support meaningful local planning that implements VISION 2050 and leads to certification
- Maintain a consistent and transparent plan review process for jurisdictions
- Streamline and clarify, where possible, the review/certification process for PSRC staff and boards



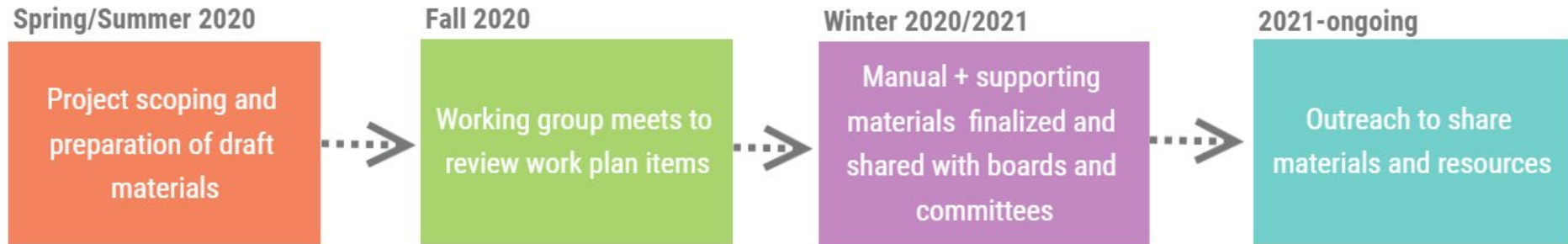
Project Outcomes/Deliverables

- Streamlining the **manual narrative**
- Updating **reporting tools**
- Revamping the Plan Review Manual **webpage**
- Developing an ongoing **outreach** strategy, to be implemented over the next few years

Are we on the right track?



Approach & Timeline



Staff-Level Working Group

WHO

10-12 staff members from counties and cities + Commerce and WSDOT representatives

WHAT

Provide feedback on manual changes, reporting tool design and content, and what resources and outreach are most needed

WHEN

4-5 virtual meetings between October 2020 and January 2021

Any volunteers?

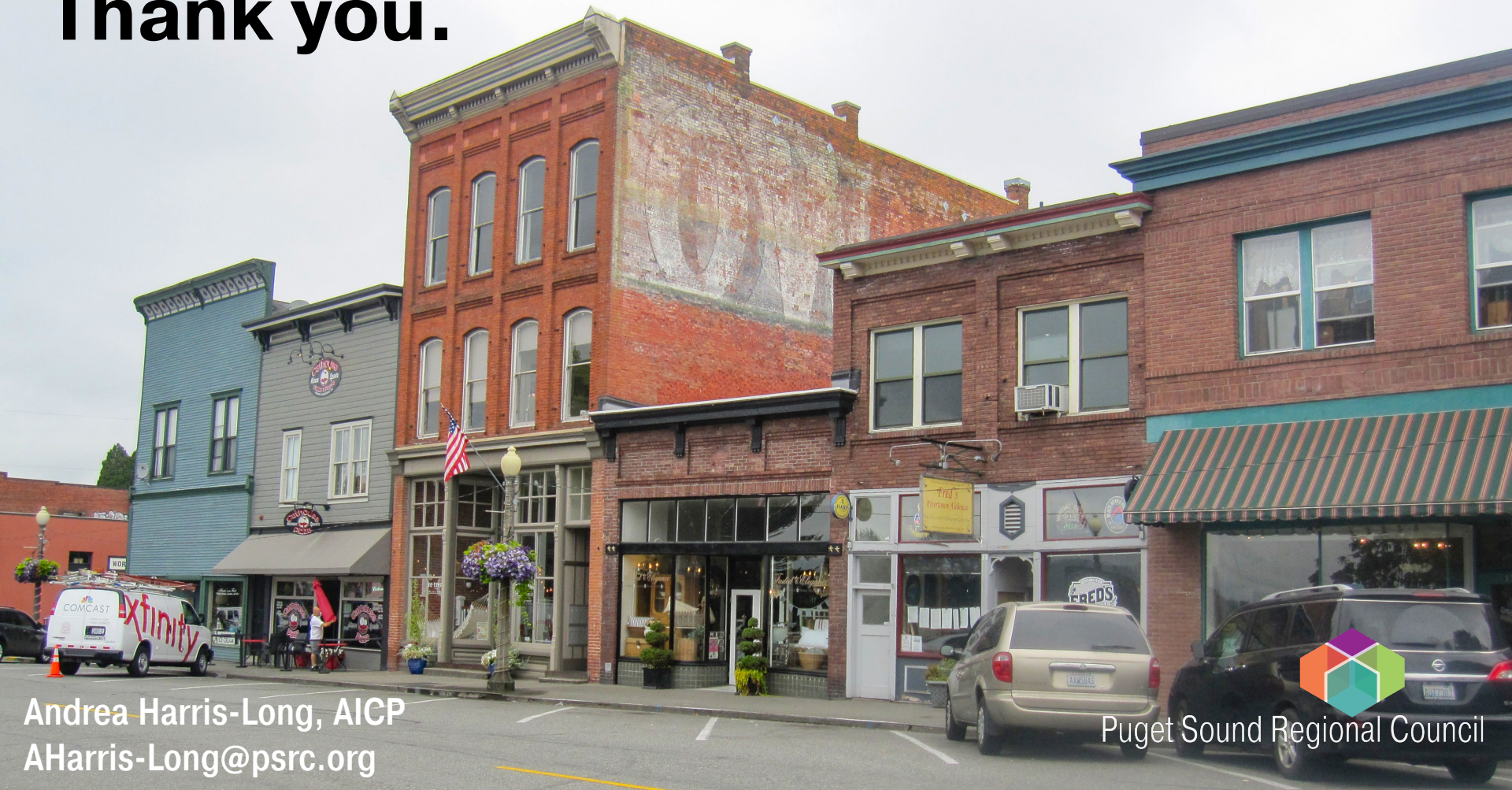


Next Steps

- **Staff will incorporate RSC's feedback into the project scope of work**
 - Send additional feedback or questions to Andrea Harris-Long at AHarris-Long@psrc.org by Monday, Sept. 14.
- **October RSC meeting – review draft scope of work**
- **October GMPB meeting – briefing on project scope of work**



Thank you.



Andrea Harris-Long, AICP
AHarris-Long@psrc.org


Puget Sound Regional Council