

Draft Regional Transportation Plan

TDM Advisory Committee: February 9, 2022



Puget Sound Regional Council

Transportation Planning Activities

Topics covered in today's presentation:

- **Regional Transportation Plan**
 - *Overview and work to date*
 - *Outreach activities and what we have heard*
 - *Highlights of plan performance*
 - *Public Comment period and next steps*



VISION 2050 Implementation



Regional Transportation Plan

- Builds from VISION 2050
- Objectives:
 - Make progress on existing challenges, address current and future needs of the transportation system
 - Provide better data and analysis to support local investment planning (2024 comprehensive plans)
 - Plan for long-term system investments to accommodate future growth
 - Improve existing system, big picture thinking on future investments (aviation, rail, ferries)



Building from VISION 2050, board identified key policy areas:

- Access to transit
- Safety
- Equity
- Climate
- Local agency needs
- Forward thinking/future investments



Key Planning Work – System Needs and Opportunities

PSRC's Transportation System Conditions Visualization Tool

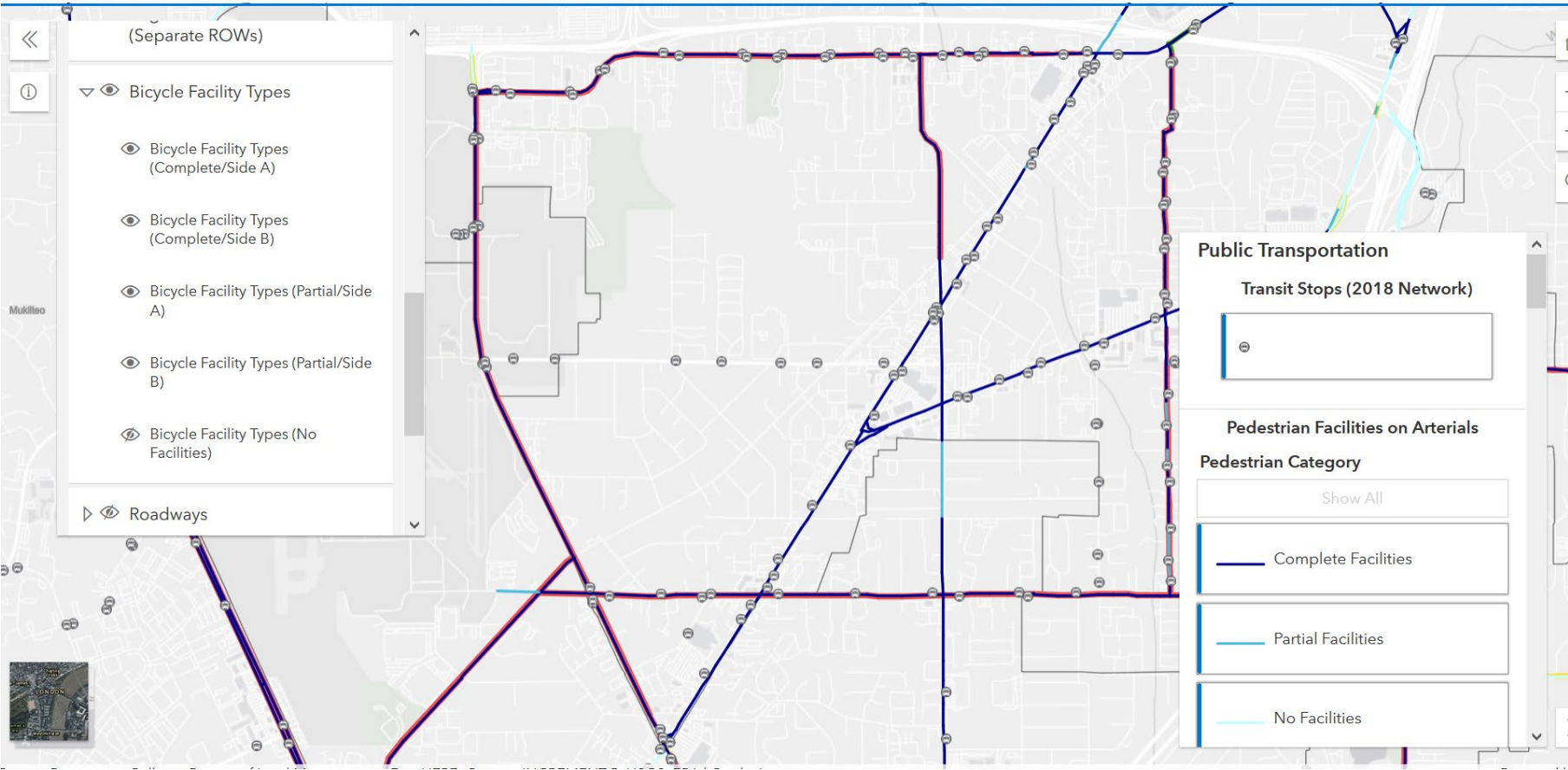


2022–2050

REGIONAL TRANSPORTATION PLAN

Full System (All Layers)

Full System (All Layers)



<https://engage.psrc.org/visualization>

Or

<https://www.psrc.org/our-work/rtp>



What Have We Heard?



Online Engagement Platform



Virtual Outreach Meetings



Personal Interviews



Social Media



Survey

 **Puget Sound Regional Council**
on Thursday 

We want to hear from you! Take a survey to help plan the future of transportation in Puget Sound: <https://engage.psrc.org/regional-transportation-plan>



HOW WILL YOU GET AROUND?

ENGAGE.PSRC.ORG
Regional Transportation Plan
PSRC is developing the next Regional Transportation Plan, which will des...

What Have We Heard?

Top five priorities:

- Reliable, well-maintained roads and highways
- Reliable, well-connected transit service for local neighborhoods
- Expanded transit to major destinations
- Complete bike/ped facilities
- High speed rail

Top three motivators to use transit more:

- Shorter trip times
- Easier to access
- Extended service

Top six mobility needs for people with special transportation needs:

- Shorter travel times when taking regular transit or specialized transportation
- More transportation services at times when they are needed
- Accessible information about available services and language services
- Better access to health and wellness destinations
- Affordable transportation services
- More connected ADA-accessible infrastructure (i.e., curb ramps)



Continued Outreach

- Continued outreach on Coordinated Mobility Plan
- Targeted focus groups
 - Business community
 - Underrepresented communities
- Outreach to countywide organizations, others
- Draft plan public comment period, including an online open house
- Board review of public comments



What's in the Plan?

- \$300 billion of investment over the next 28 years
 - 56% will maintain, preserve and operate the system
 - 70% of the plan's system improvements are for investments in local and regional transit
 - 84% of the plan funded with forecast current law revenues



36

Bus Rapid Transit
routes



10

Passenger-only Ferry
routes

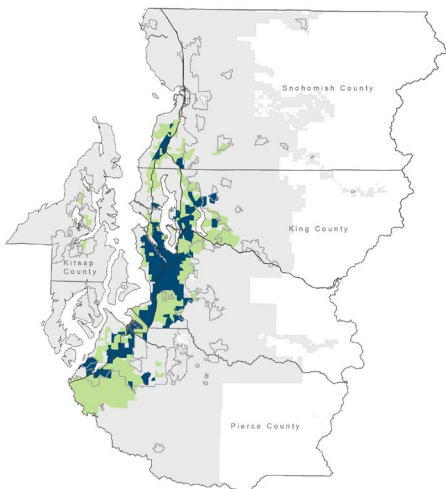


116

Miles of light rail and
80+ stations



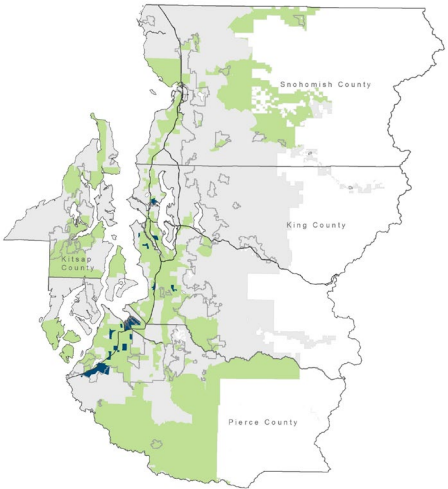
Equity Focus Areas



People of Color

People of Color
Regional Average: 35.9%

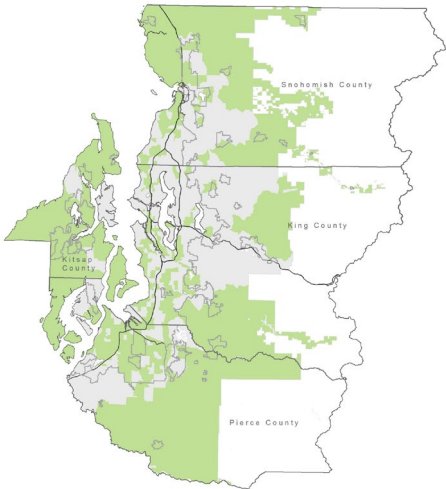
- Above 50% Threshold
- Above Regional Average
- Below Thresholds
- Urban Growth Area
- Forest Lands



People with Low Incomes

People with Low Incomes
Regional Average: 20.7%

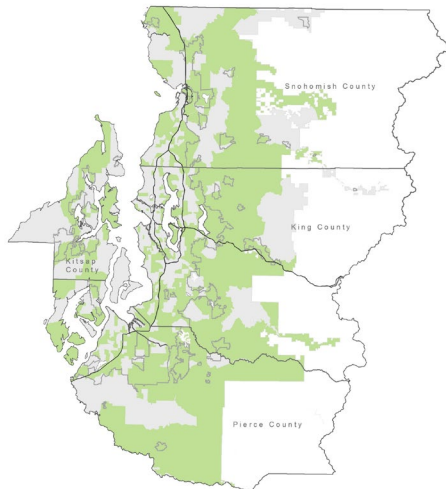
- Above 50% Threshold
- Above Regional Average
- Below Thresholds
- Urban Growth Area
- Forest Lands



People with Disabilities

People with Disabilities
Regional Average: 11.0%

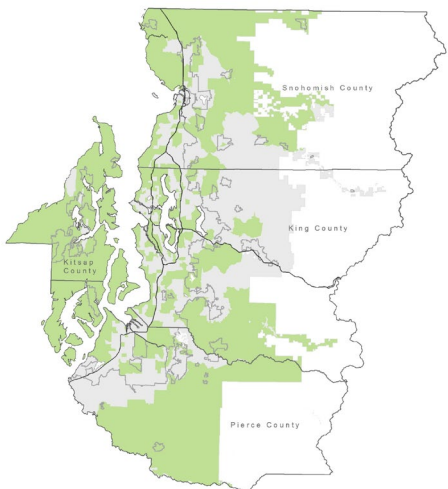
- Above Regional Average
- Below Regional Average
- Below Thresholds
- Urban Growth Area
- Forest Lands



Youth (Ages 5-17)

Youth (Ages 5-17)
Regional Average: 15.4%

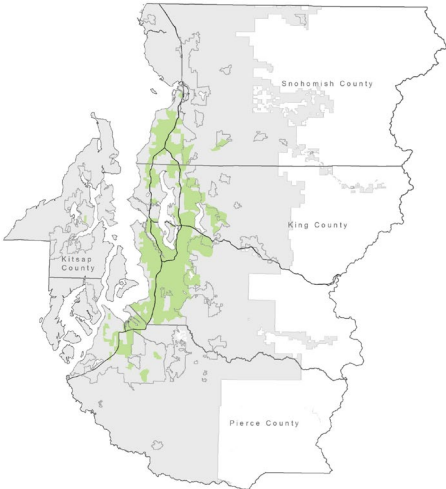
- Above Regional Average
- Below Threshold
- Urban Growth Area
- Forest Lands



Older Adults (Aged 65+)

Older Adults (Aged 65+)
Regional Average: 13.4%

- Above Regional Average
- Below Threshold
- Urban Growth Area
- Forest Lands



People with Limited English Proficiency

People with LEP
Regional Average: 8.5%

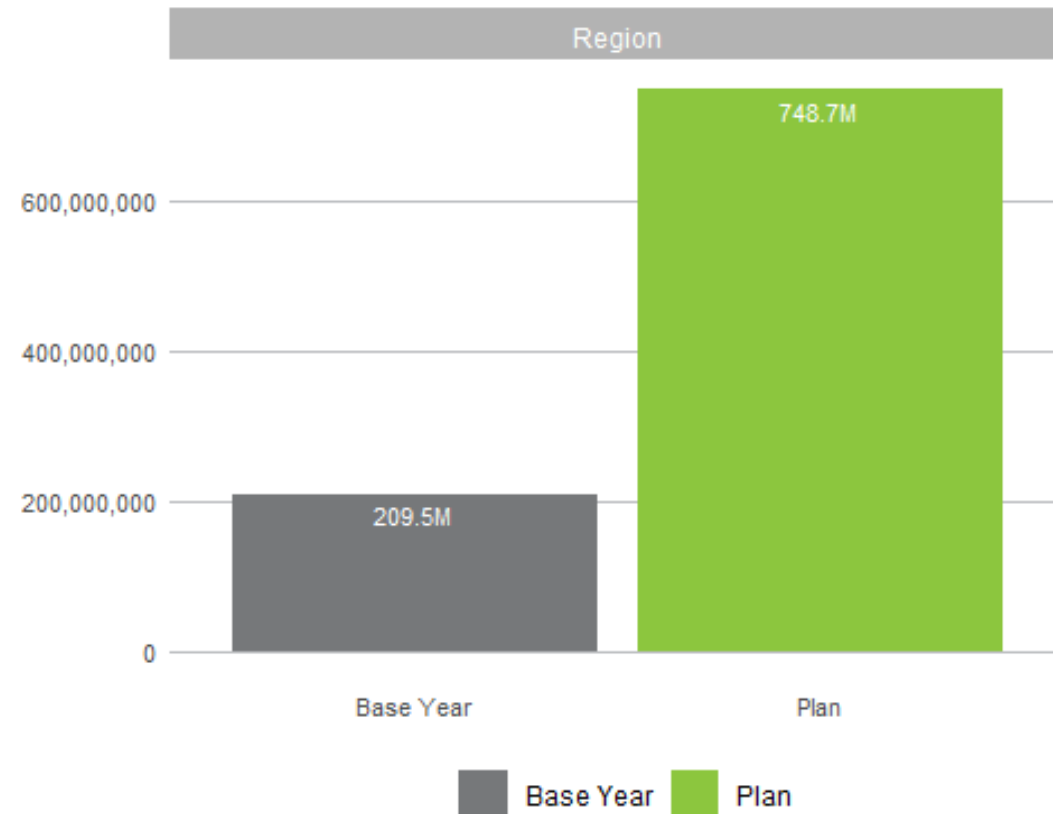
- Above Regional Average
- Below Threshold
- Urban Growth Area
- Forest Lands



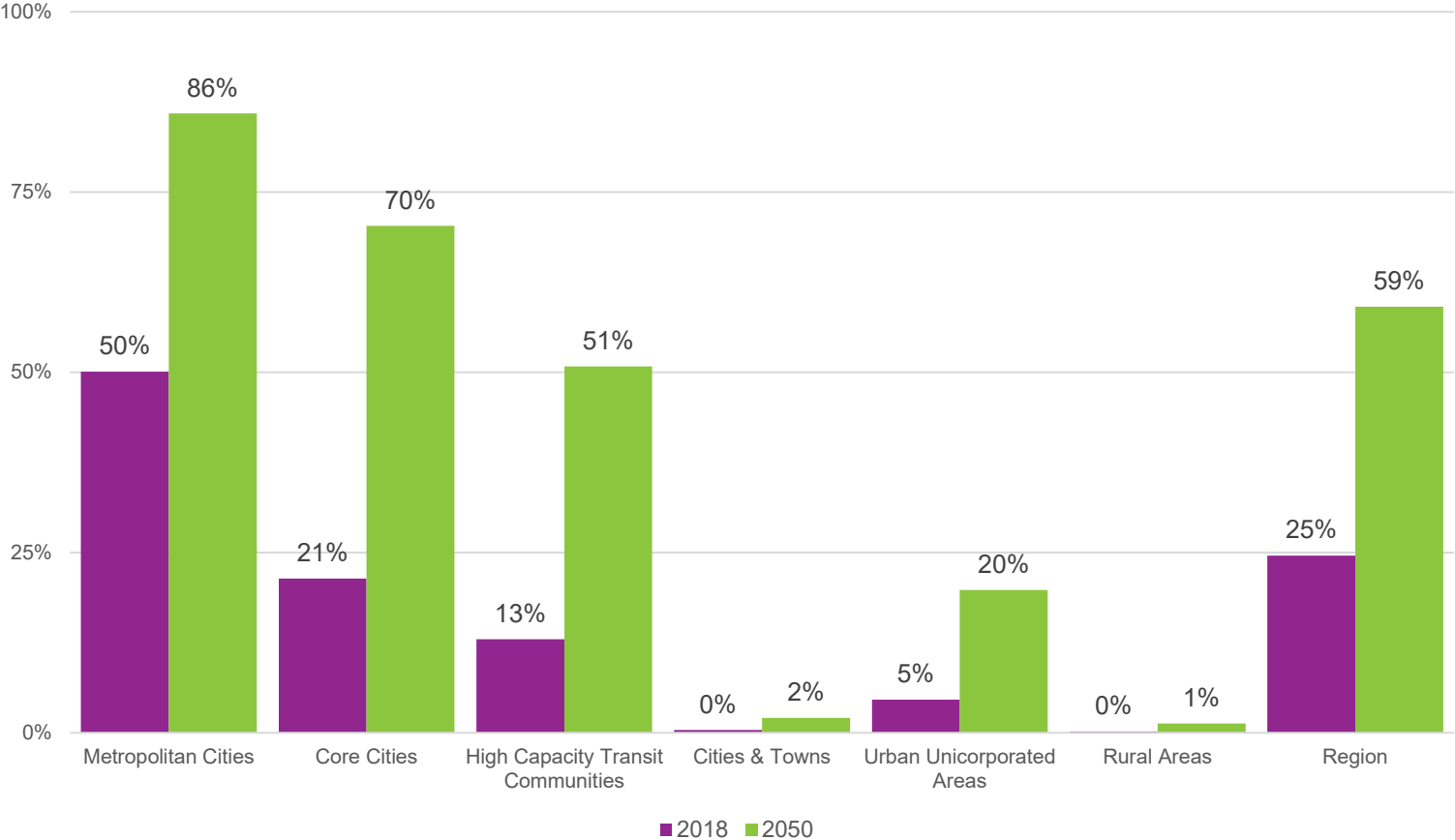
Key Highlights: What will the Plan Deliver?

Transit boardings are forecasted to **more than triple** by 2050 with expansion of High-Capacity Transit investments in rail, bus rapid transit and passenger only ferries

2022–2050
REGIONAL TRANSPORTATION PLAN



Key Highlights: What will the Plan Deliver?



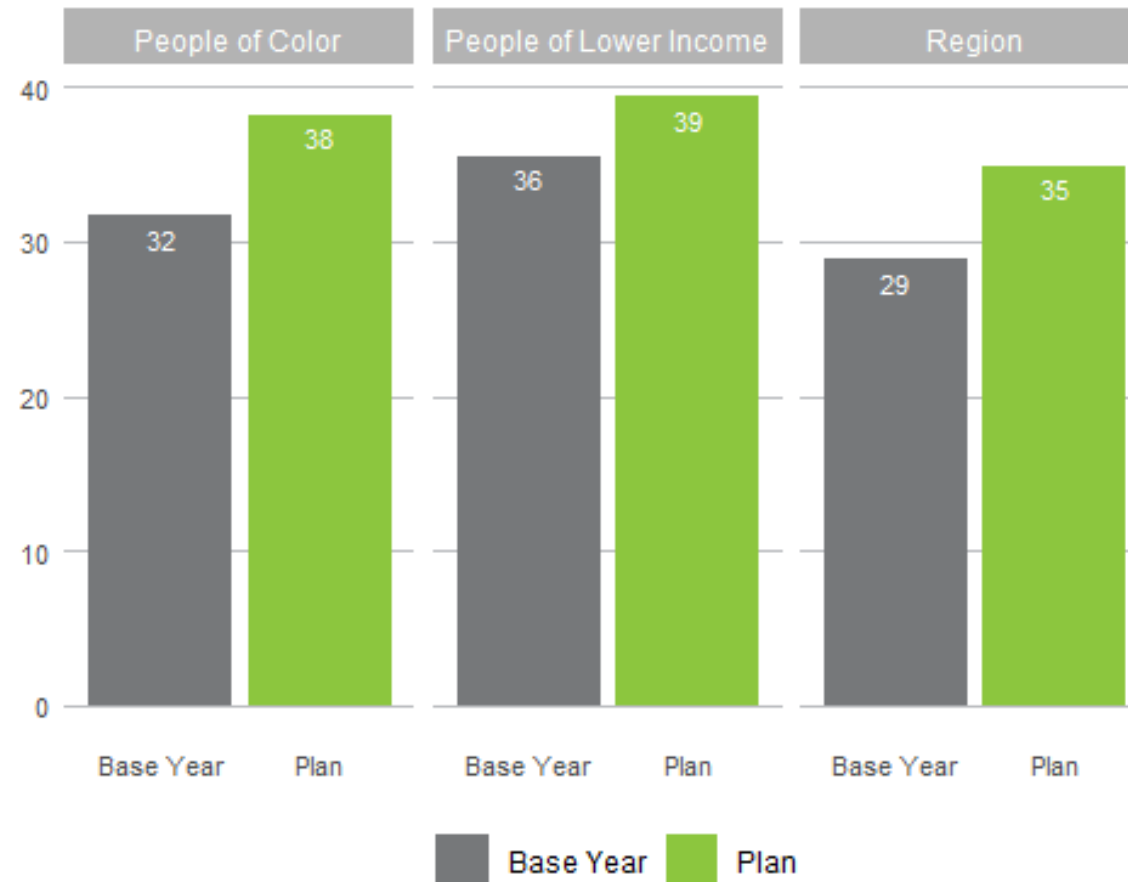
By 2050, **59% of households will live within a 1/2 mile of high-capacity transit service**



Key Highlights: What will the Plan Deliver?

2022-2050
REGIONAL TRANSPORTATION PLAN

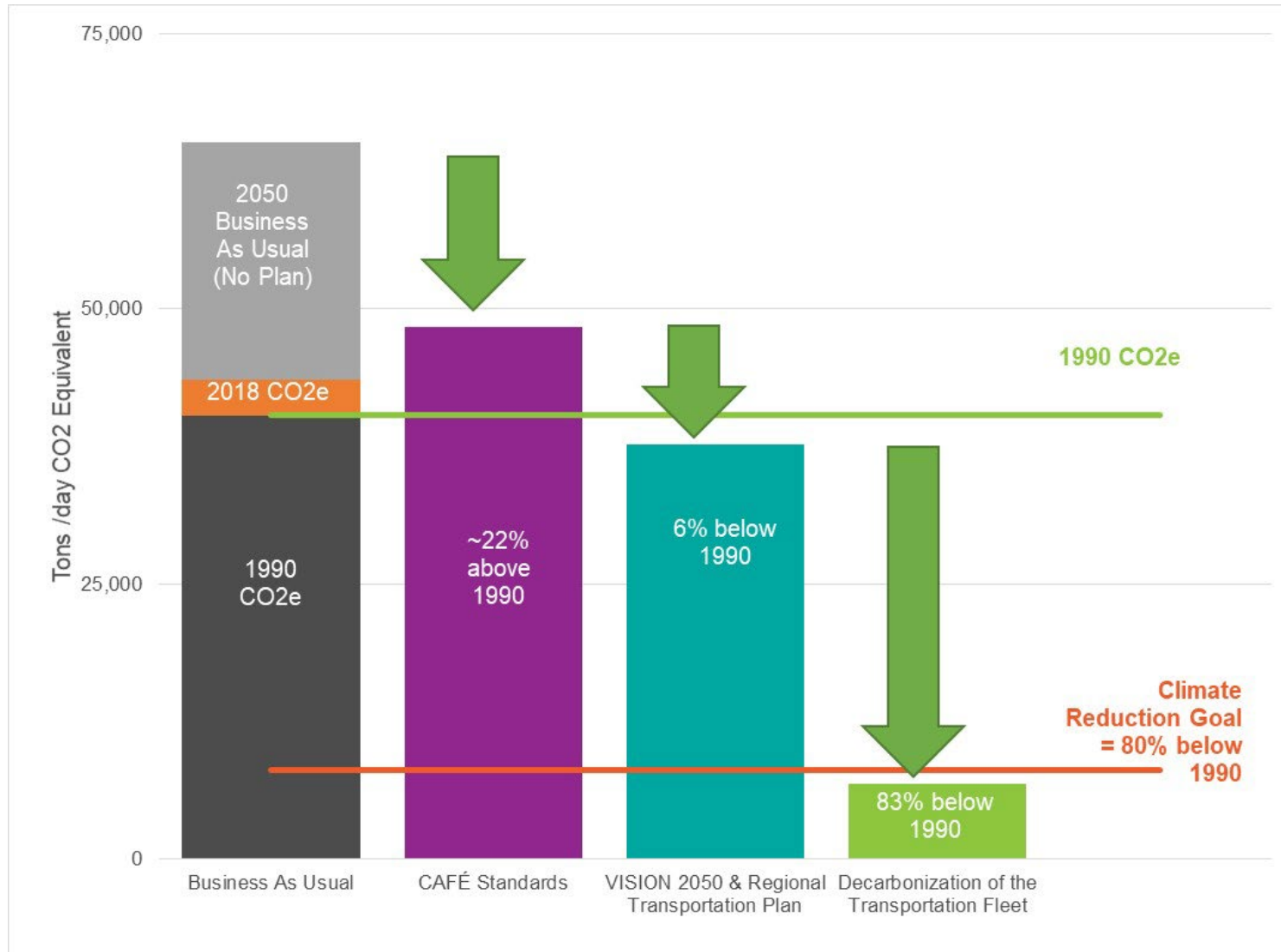
By 2050, the average person will **walk or bike 21% more** than today



Key Highlights: What will the Plan Deliver?

Steps to Meeting Regional Climate Goals

2022–2050
REGIONAL TRANSPORTATION PLAN



Reflecting:

- VISION 2050
- RTP investments
- Fuel economy improvements
- Transition to zero emission transportation system



- Changes from Current RTP (2018-2040)
- Key Issues for TDM identified by TPB and TDM Advisory Committee:
 - Improving TDM Integration in Planning
 - Measuring Program Effectiveness and Efficiency
 - Evaluating and Addressing Equity in TDM
 - Modernizing the CTR Law



Schedule and Next Steps



Public comment period January 13 through February 28, 2022



- TDM Section of Plan: engage.psrc.org/tdm
- [Full Draft Plan](#)—TDM section begins on Page 88 and integrated throughout plan
- What's Next for TDM—see Page 181
- Provide Feedback by February 28 via comment form in [online open house](#), [email](#), or USPS mail (see next slide)



Thank You!

How to comment on the draft plan:

- Visit online open house
- Use comment form
- Email: transportation@psrc.org
- US Mail: 1011 Western Ave #500,
Seattle, WA 98104

