

2022-2050

REGIONAL TRANSPORTATION PLAN

Performance Metrics

Transportation Operators Committee

September 22, 2021

Overview

Topics covered in today's presentation:

- Overview
- Analysis Geographies
- Transit Boardings & Access
- Mode of Transportation
- Miles Driven per Household
- Next Steps



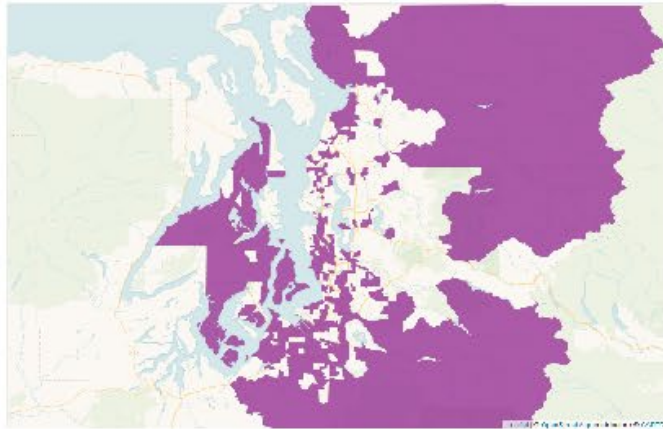
Regional Capacity Projects

- 43 new or expanded high-capacity transit routes
- 30 new or expanded regional trails
- 56% of the plan focused on maintenance and preservation needs
- Significant investment in multimodal, integrated transportation system
- Local and regional transit investments represent 70% of all system improvements

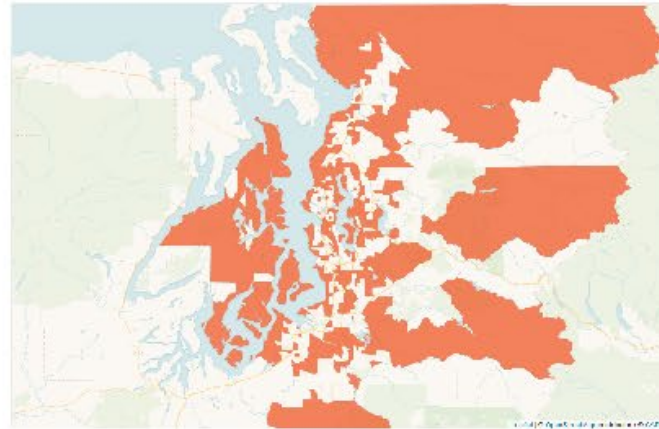


Equity Geographies

Disability



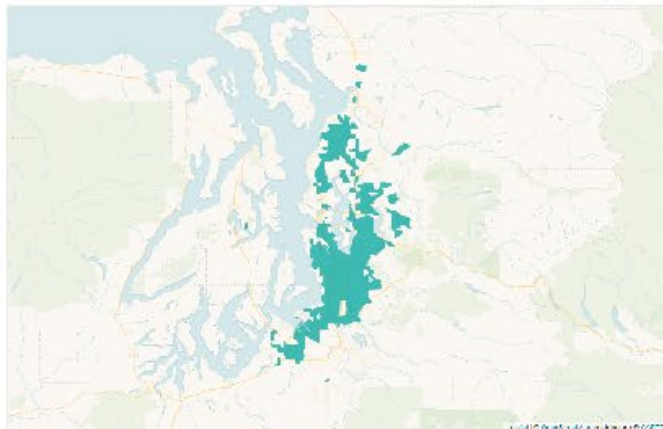
Over 65



Under 18



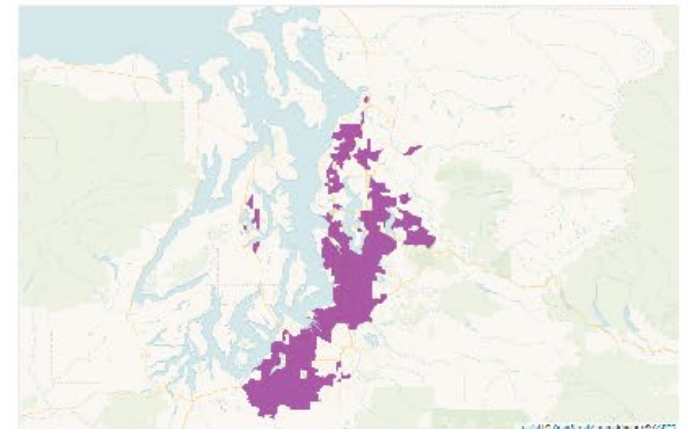
Limited English Proficiency



Lower Incomes



People of Color



2050 Regional Transit Network

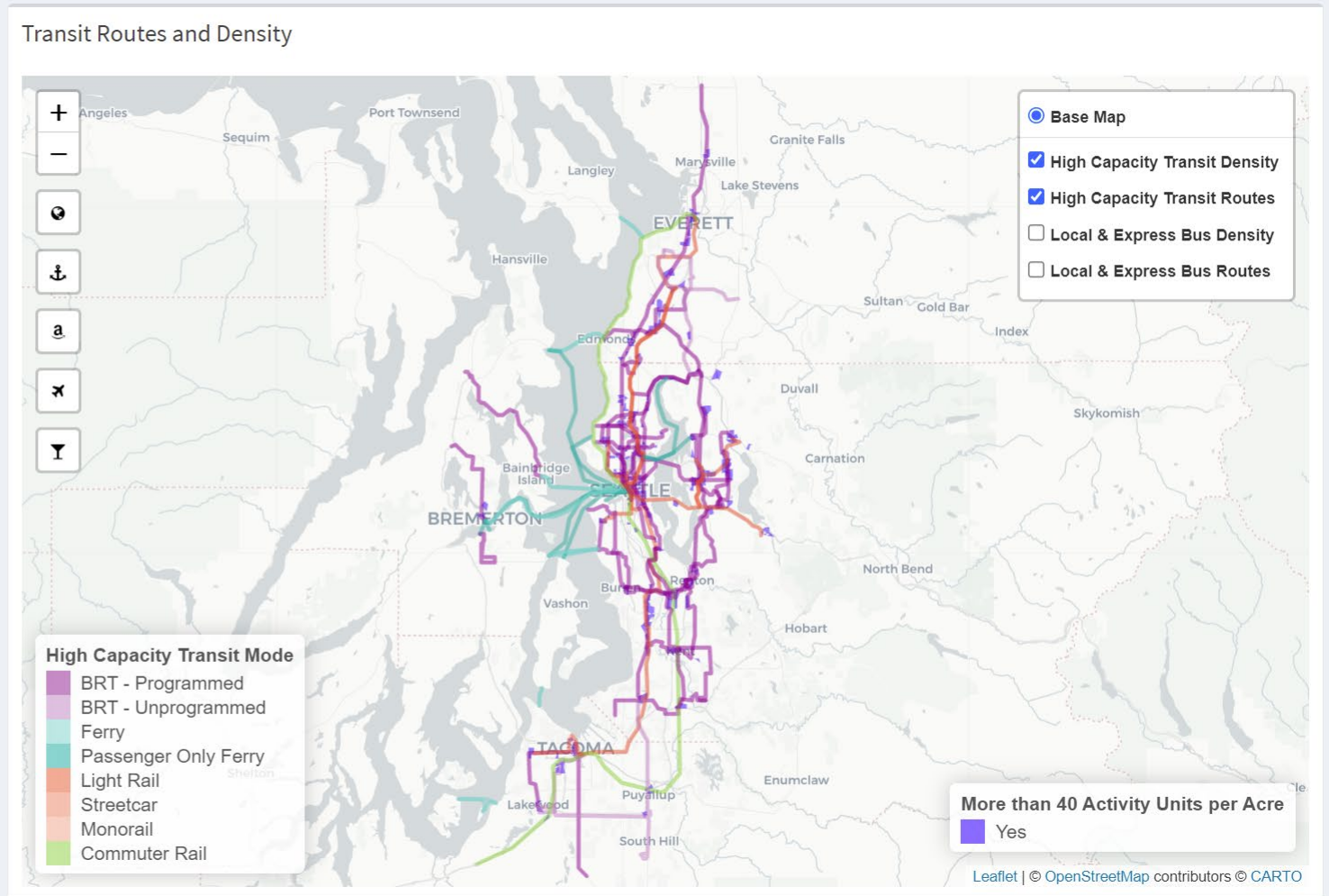
BUS RAPID TRANSIT
 36 Programmed Routes
 5 Unprogrammed Routes

LIGHT RAIL
 5 Light Rail Routes
 3 Streetcar Routes
 1 Monorail Route

HEAVY RAIL
 2 Commuter Rail Routes

FERRIES
 10 Passenger-Only Routes
 11 Ferry Routes

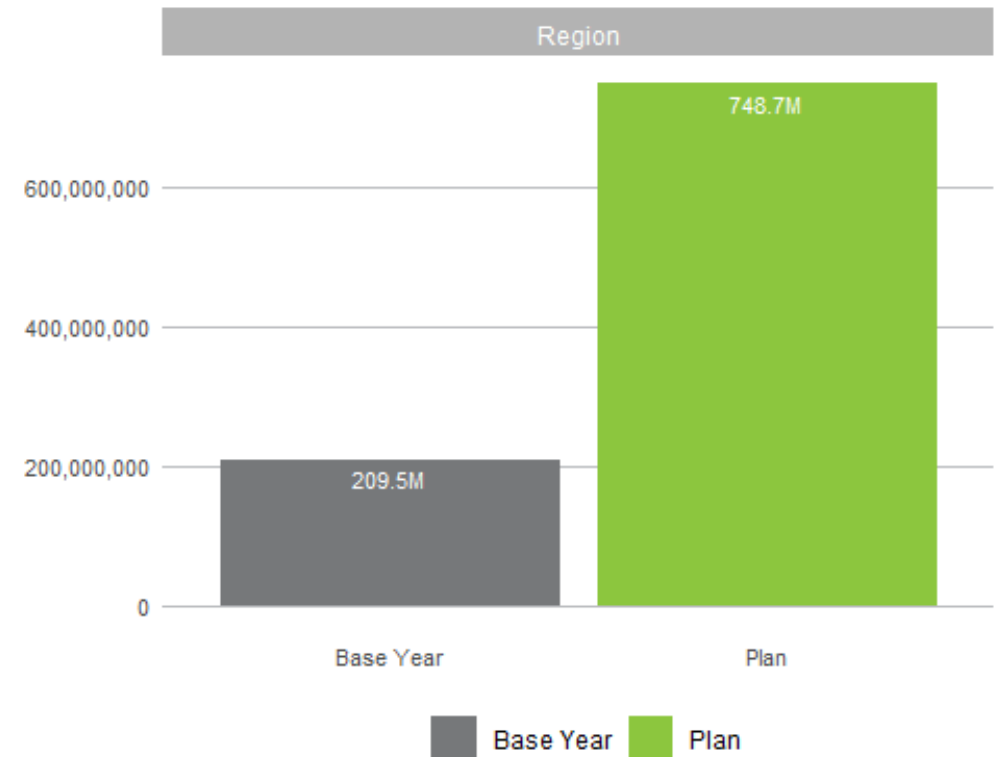
BUS
 267 Local and Express Routes



Transit Boardings

Expansion of High Capacity Transit is planned across the region in the form of rail, bus rapid transit and passenger only ferries. Transit boardings are forecasted to more than **triple** by 2050 with these investments.

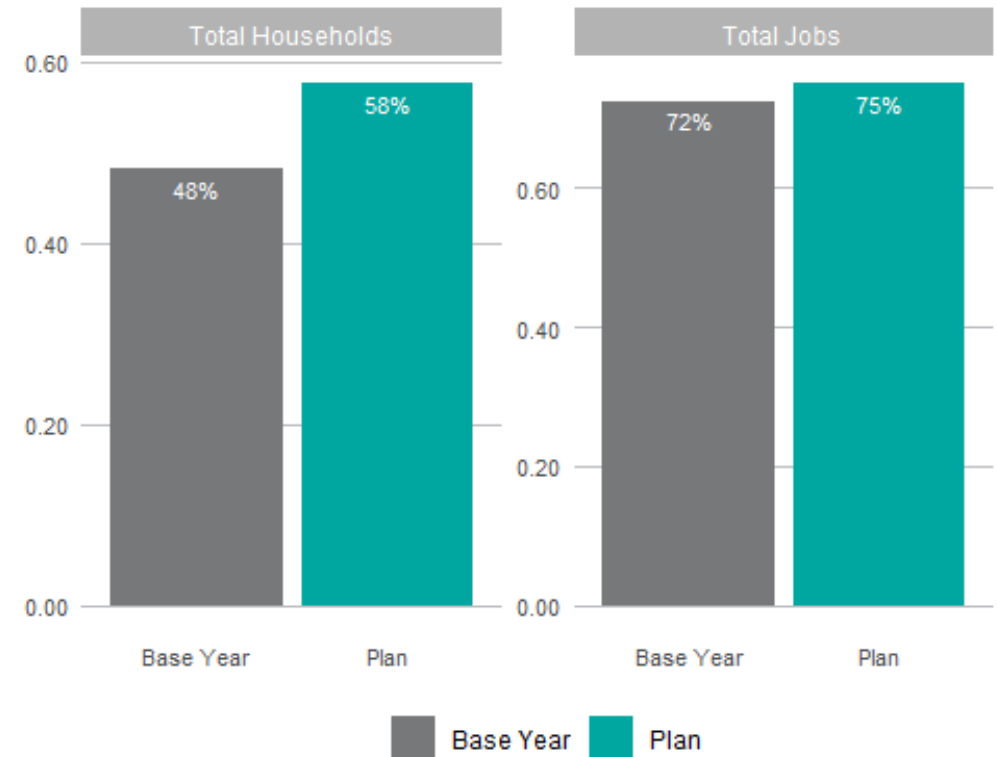
- By 2050 there will be 36 BRT routes connecting people seamlessly to the regional ferry and rail network.
- By 2050, 10 Passenger Only Ferry routes will connect people across Lake Washington and Puget Sound.
- In 2050 a 116-mile light rail network with over 80 stations serving 16 cities will connect people across three counties – a **five-fold expansion** over the system today.



Transit Access

With transit increases across the region, an even greater number of people will have access to high quality transit service by 2050.

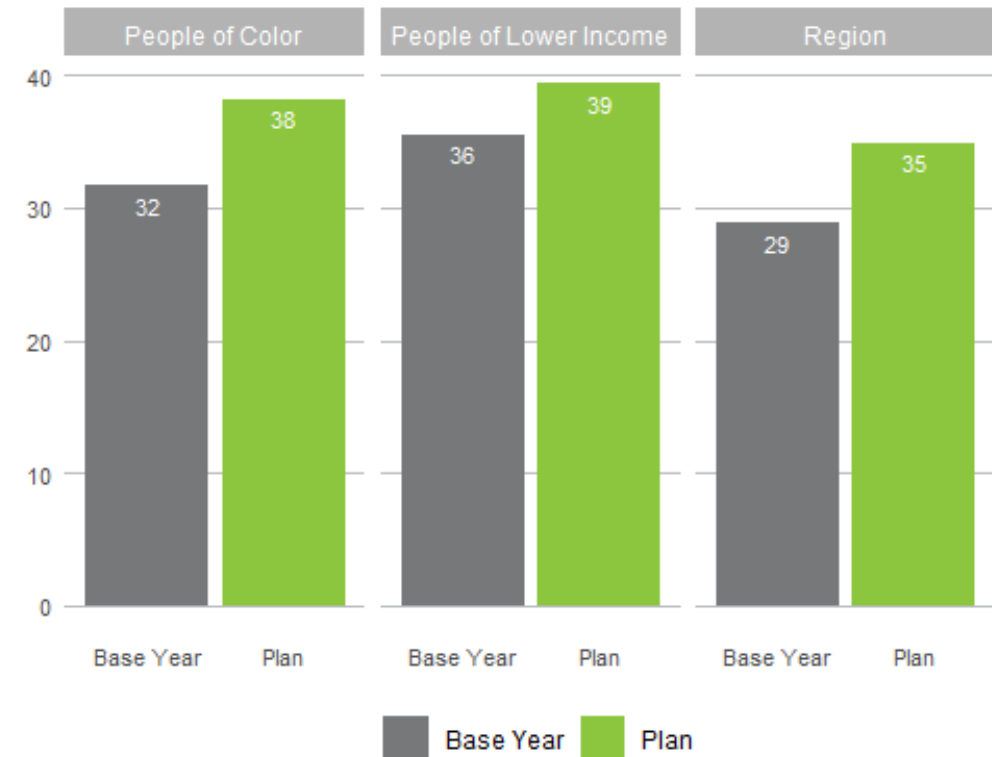
- By 2050, more than 58% of households will live within 1/4 miles of transit service.
- 3/4 of all jobs in the region will be served by transit in 2050.



Walking and Biking per Household

In 2018 the average person walked or biked about 29 minutes for transportation purposes each day. By 2050, people are forecasted to walk or bike more than 35 minutes per day.

- People of Color and People of Lower Income tend to walk and bike for transportation more than the region as a whole.
- Walking and Biking for transportation purposes is forecast to increase across the region by 2050



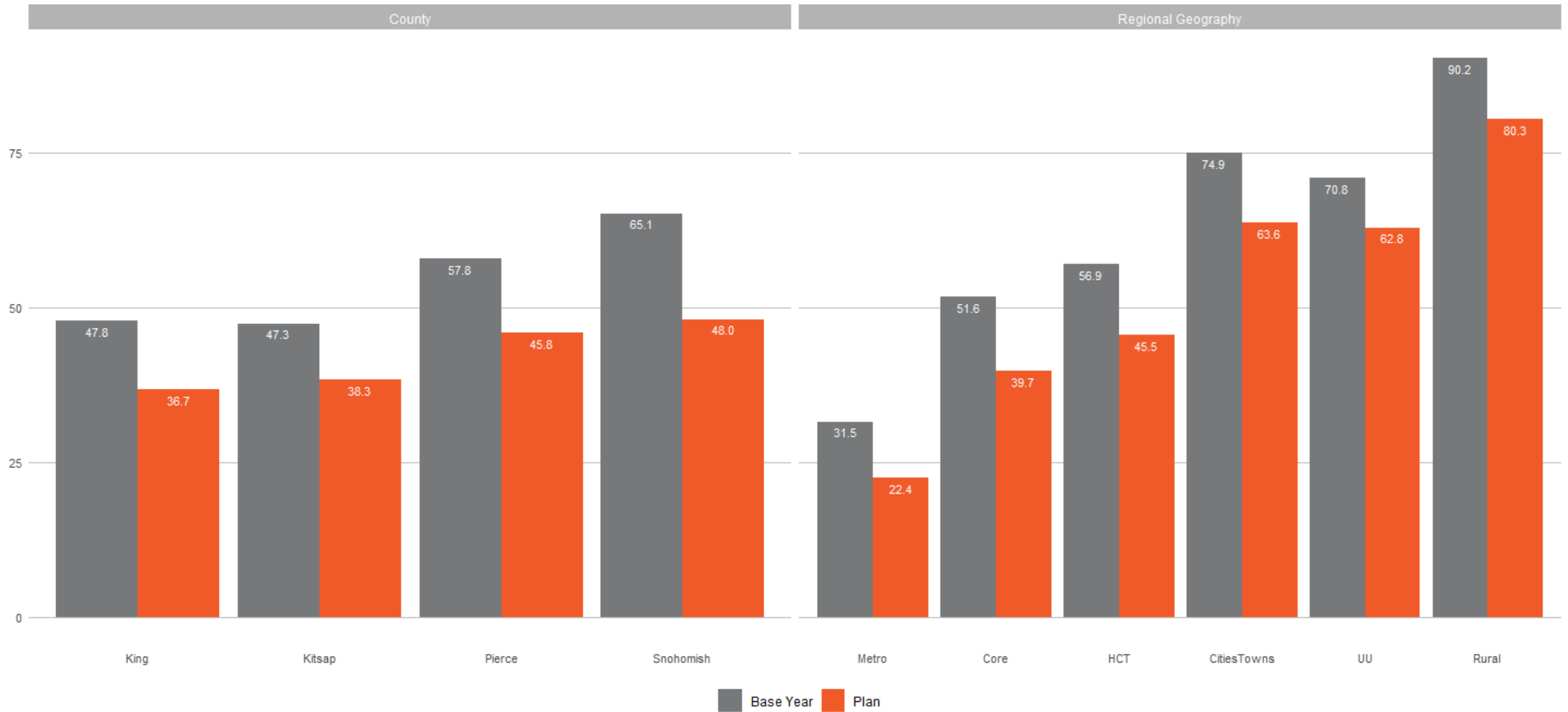
Miles Driven per Household

In 2018, the average household drove more than 15,900 miles per year. By the year 2050, the average household is forecast to drive approximately 12,300 miles per year, a -23% reduction over the Base Year.

- The miles people drive everyday is forecasted to reduce by 2050 across the region.
- People of Color and People of Lower Income tend to use transit and walk and bike for transportation and as such drive fewer miles per day than the regional average.



Daily Miles Driven per Household



Next Steps

- Continued mining of modeled output and analysis
- Snapshots of key outputs and existing conditions to be posted on the website
- Building of the future conditions visualization tool
- Representation of 2050 regional growth strategy, regional capacity projects, RTP analysis
- More detail on climate analysis – Four-Part Greenhouse Gas Strategy - and next steps



Questions? chelmann@psrc.org

