

Outreach and Early Comment Themes

Transportation Policy Board • February 10, 2022



Puget Sound Regional Council

RTP Outreach and Engagement

Public outreach and involvement in development of the plan;
strong focus on historically marginalized communities

- Plan Chapter 2
- Appendix E: Public Outreach and Engagement
- Information, guidance, and resources for members

People

Public Engagement

The Regional Transportation Plan is responsive to current and future needs of users of the regional transportation system. To better understand these needs, PSRC worked alongside its membership, community, and other stakeholders to make sure that the views, priorities, and perspectives of the region's residents are reflected in the plan. People from all parts of the central Puget Sound region representing many races, ages and income levels have been involved in the development of the plan.

As a planning agency, PSRC makes decisions that shape transportation, land use, and the natural environment. In the past, many of these decisions have excluded the voices of people of color, people with lower incomes, and other communities who have been left out of the decision-making process. PSRC's continued focus on community engagement explores new ways for the agency to work with community members in developing priorities for its work. Engaging with community in new ways and ensuring Black residents and communities of color have a strong role in informing the plan were priorities.

This has also taken place during the global COVID-19 pandemic, impacting the ability to meet in person throughout the planning process. This challenge was an opportunity to deploy new techniques for engaging with PSRC members and communities, offering some real advantages through virtual engagement opportunities, which will be discussed further in this section.

Several key themes emerged throughout the public engagement process. PSRC members, stakeholders and community members have emphasized future transit investments and needs for accessing transit, maintenance of existing transportation infrastructure and the role the plan has in advancing racial equity. Affordability of transportation was a consistent theme, as was addressing issues caused by transportation infrastructure and systems, often in marginalized communities. Climate change and the need to reduce greenhouse gases was top of mind in youth group outreach, in public survey responses, and follow-up interviews. These topics were all taken up by the Transportation Policy Board discussions and emphasized throughout the plan.

Outreach and COVID-19

Even before the COVID-19 pandemic began, PSRC focused on an inclusive public engagement strategy to reduce barriers to participation. In response to limited opportunities for in-person engagement and public participation, some completed activities and planned strategies include:

- Offering a public opinion survey in multiple formats and languages
- Offering virtual public meetings at a range of times and days to provide options to accommodate different schedules and availability
- Posting an overview video on the project website so people could watch at a time that works for them
- Opportunities to provide public comments online, at PSRC board meetings, and other forums
- An online open house with background information about various sections of the draft plan, with opportunities to comment or ask questions
- Direct, targeted outreach to jurisdictions, Tribes, and community-based organizations



Notice of Draft RTP

- Email to PSRC membership and interested parties, libraries, agencies
- Letters to Tribes
- Asked members to share information (social media toolkit)
- Social media ads in selected zip codes – Equity Focus Areas
- Email to all survey respondents
- Equity Advisory Committee
- Twice-weekly blogs (boosted) and Executive Director email



Current Outreach Efforts



**Online Open
House**



**Community
Focus Groups**

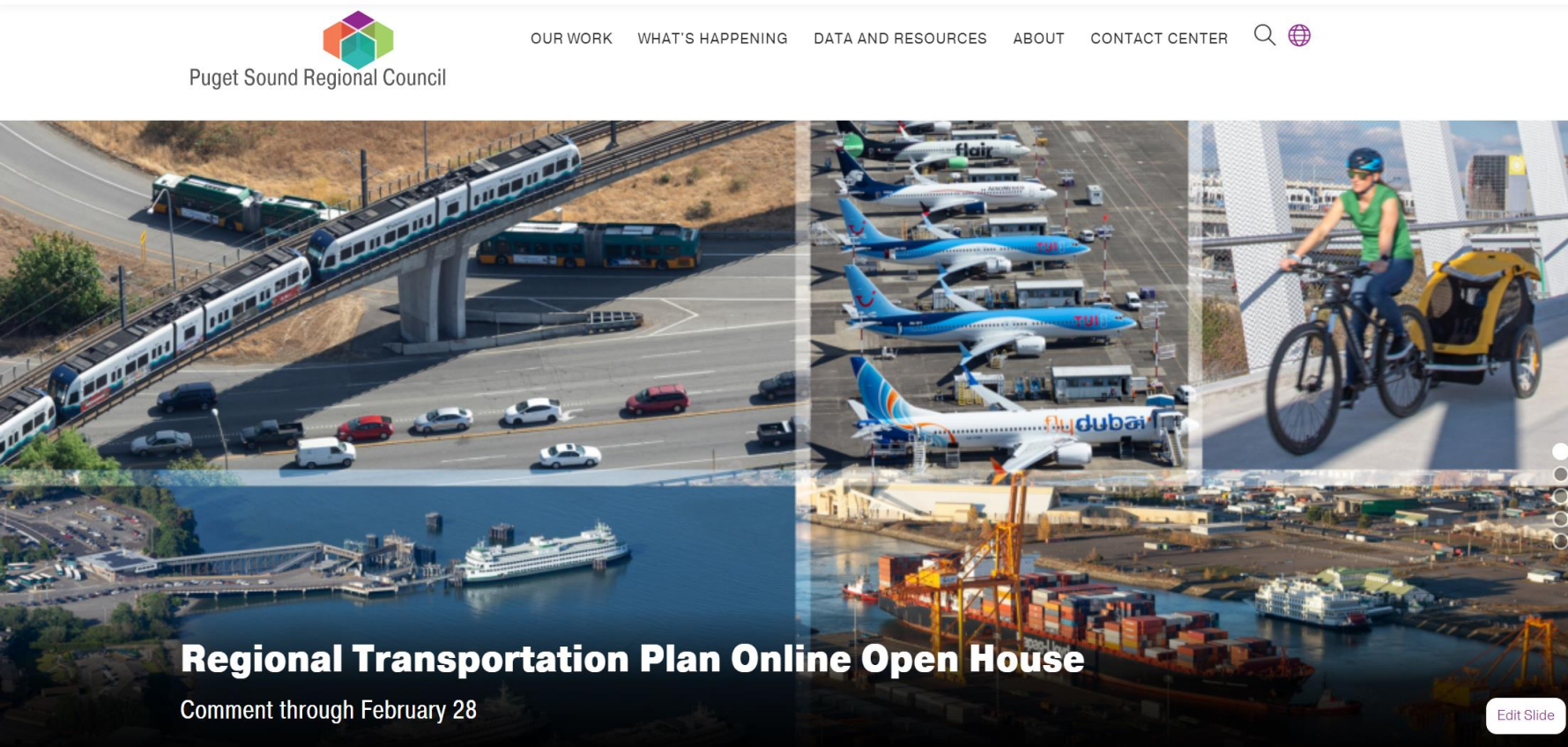


**Employer/Business
Interviews**



**Virtual Public
Meetings**

<https://engage.psrc.org/welcome-rtp>



Visitors

- 3,000+
- ~1,000 per week

Welcome to the Regional Transportation Plan Open House



PSRC is seeking public comment on the draft Regional Transportation Plan through February 28, 2022.

Learn more about the draft plan from this online open house. It is organized around key elements of the plan, including: [climate](#), [equity](#), [transit](#), [walking and biking](#), the [Coordinated Mobility Plan](#), [system performance](#), [freight](#), [safety](#), the [financial strategy](#), the plan's [visualization tool](#), [maintenance and preservation](#), and [demand management](#). Each topic includes a short video with highlights of the plan and the opportunity to comment. [View all the topics](#). Download the draft plan from the column on the right.

We will also be hosting three webinars with a live presentation and time for questions. Check back here for the Zoom links:

- [Wednesday, February 2, 8-9 am](#)
- [Tuesday, February 8, 12-1 pm](#)
- [Wednesday, February 9, 5:30-6:30 pm](#)

What is the Regional Transportation Plan?

The Regional Transportation Plan is updated every four years to describe how the four-county central Puget Sound region plans for and improves the transportation system into the future, while addressing existing needs and expected growth.

Building from the policies and goals in [VISION 2050](#), the plan outlines investments the region is making in transit, rail, ferry, streets and highways, freight, bicycle and pedestrian and other

2022–2050 REGIONAL TRANSPORTATION PLAN



View the draft plan documents

[Draft plan by chapter](#)

[Full Draft Regional Transportation Plan](#)

[Appendices](#)

Welcome to the Online Open House the Regional Transportation Plan

The topics below cover the elements of the draft plan. Click through to watch a short video on the topic, read that section of the draft plan, or make a comment on that topic. Your ideas are important to us.

[About this site and the RTP](#)

Welcome to the Online Open House for the Regional Transportation Plan

The topics below cover the elements of the draft plan. Click through to watch a short video on the topic, read that section of the draft plan, or make a comment on that topic. Your ideas are important to us.

[About this site and the RTP](#)



System Performance

[Learn more](#)



Equity

[Learn more](#)



Transit

[Learn more](#)



Financial Strategy

[Learn more](#)



Climate

[Learn more](#)



Safety

[Learn more](#)



System Performance

[Learn more](#)



Equity

[Learn more](#)



Transit

[Learn more](#)



Walking and Biking

[Learn more](#)



Visualizing the Transportation System

[Learn more](#)



Transportation Demand Management



Coordinated Mobility Plan

[Learn more](#)

Equity



Watch the video for an overview of equity in the draft 2022-2050 Regional Transportation Plan.

For captioning, click on the 'CC' button at the bottom of the video. Captions can be translated using the settings gear.



[Click here for Appendix F: Regional Equity Analysis.](#)

[Click here to view Chapter 2- Performing for People, Environment, and Mobility](#), equity starts on page 8 of the PDF.

2022-2050 REGIONAL TRANSPORTATION PLAN



View the draft plan documents

[Draft plan by chapter](#)

[Full Draft Regional Transportation Plan](#)

[Appendices](#)



[Click here for Appendix F: Regional Equity Analysis.](#)

[Click here to view Chapter 2- Performing for People, Environment, and Mobility](#), equity starts on page 8 of the PDF.

Comment on the draft Regional Transportation Plan

Your comment will be shared with PSRC's decisionmakers and become a part of the public record. You can type your comment directly into the comment form and/or use the file upload option to submit a word document or PDF letter.

1. Share your comments on the draft plan

2. Upload your comments as a word or PDF document

3. What is your zip code *






This is to help us understand the geographic representation of the comments received.

0/10

4. What is your race and/or ethnicity? Check all that apply

View the draft plan documents

Draft plan by chapter

-  [Executive Summary](#)
-  [Introduction](#)
-  [1. An Integrated Multimodal Transportation System](#)
-  [2. Performing for People, Environment, and Mobility](#)
-  [3. Paying for the Plan](#)
-  [4. Big Ideas and Implementation](#)
-  [Conclusion](#)
-  [Acknowledgements](#)

Full Draft Regional Transportation Plan

Appendices

[VIEW ALL OPEN HOUSE TOPICS](#)

[BACK TO THE WELCOME PAGE](#)

[PROJECT PAGE ON PSRC.ORG](#)

Early Comments

Comment on the draft Regional Transportation Plan

Your comment will be shared with PSRC's decisionmakers and become a part of the public record. You can type your comment directly into the comment form and/or use the file upload option to submit a word document or PDF letter.

1. Share your comments on the draft plan

2. Upload your comments as a word or PDF document

3. What is your zip code *

This is to help us understand the geographic representation of the comments received.

0/10

Comments by Letter

- Usually, majority of comments
- End of comment period

Online Comment Form

- 35 comments (through 2/8)
- Largely anonymous
- Mix of positive and negative



“Everything about this is awesome. Emphasizing the role of public transit --- local, intra-, and inter-regional rail especially --- is vital. And de-emphasizing new road projects, unless they bring a benefit to intermodal or transit concerns, is another huge part of addressing our climate problems. Make it happen!”

Early Comments – Themes

- Several **project specific** comments (both for and against)
- Support for more **bicycle and pedestrian** infrastructure; transit connections
- **Accelerate** light rail and **transit implementation**
- **Opposition to** more **transit** investment
- **Safety**. Recognize **disparities** for people of color, people with lower incomes
- Support for **passenger-only ferries** and **water taxis**; reach and frequency
- **Support** for/**opposition** to **highway and roadway** investments (generally)
- Support for **user fees**/Road Usage Charges; **financial resources** for the plan



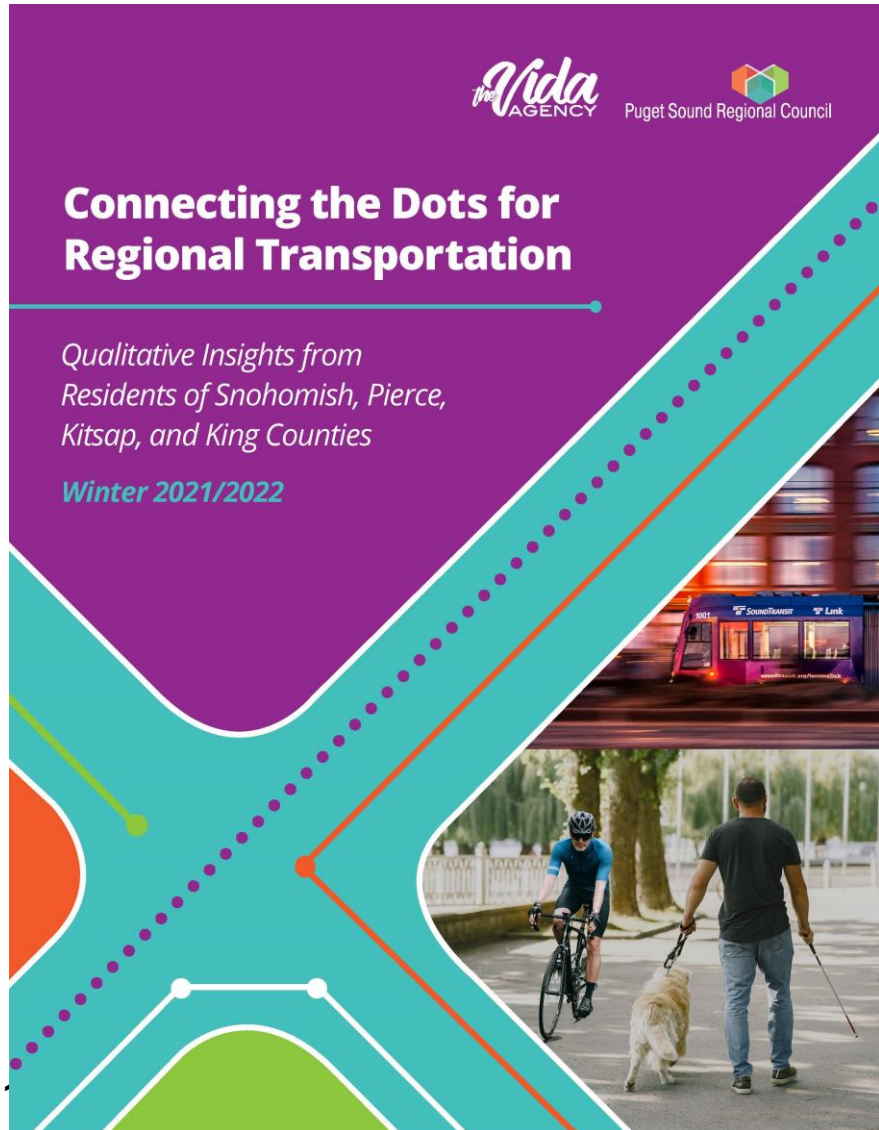
December

- 5 virtual focus groups, each county and younger adults (30 participants)
- BIPOC, lower income
- Participants compensated for their time

Purpose

- Understand more about the needs of community members
- Increase representation

Community Focus Groups



Reports available Soon!

Themes

- Reducing commute times
- Reducing reliance on single occupant vehicles
- Connecting pedestrian pathways; quality/maintenance
- Creating safer conditions
- Human infrastructure
- Region-wide coordination (transit)



Major Employers and Business Interests January and February 2022

- Connect with current networks
- Builds off Regional Economic Strategy work

Purpose

- Understand the priorities, concerns and opportunities of employers, business owners, industry groups



Puget Sound Regional Council

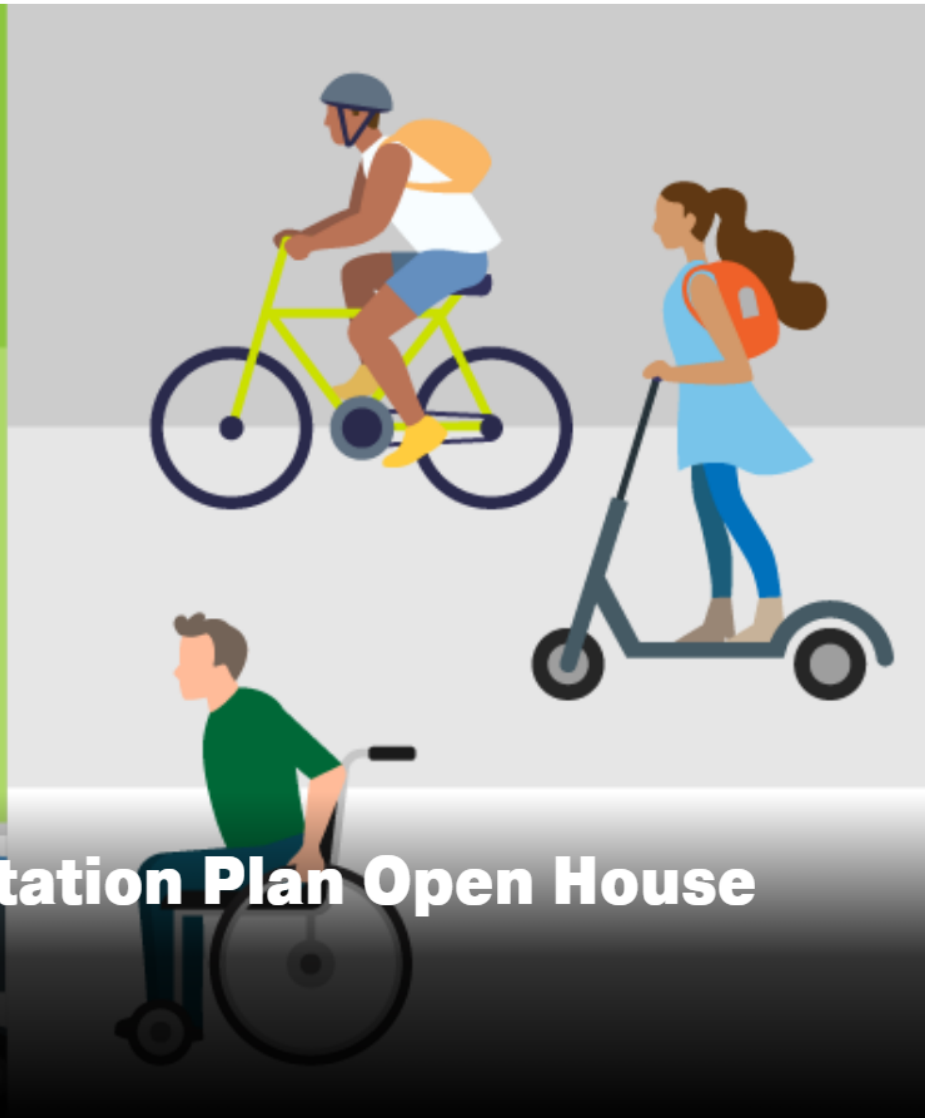
[OUR WORK](#)

[WHAT'S HAPPENING](#)

[DATA AND RESOURCES](#)

[ABOUT](#)

[CONTACT CENTER](#)



Regional Transportation Plan Open House

Live Presentation and Q&A

Join the webinar at 12 noon today!

Three public meetings with a live presentation and Q&A sessions:



Wednesday, February 2: 8:00-9:00 am

Tuesday, February 8: 12:00-1:00 pm

Wednesday, February 9: 5:30-6:30 pm



Participants

- 2/2 & 2/8: 50+
- All four counties and beyond

Transportation Priorities

- Reliable, well-connected transit
- Complete bike-ped networks
- Reliable, well-maintained roads

Comment/Question Themes

- Active participants, great questions
- Clarifying plan content

Videos Posted on Online Open House

Schedule



January 13 – February 28, 2022

Online Open House

- Information about the draft plan, comment portal

Presentations to interested groups & PSRC committees



Regional Transportation Plan Next Steps

February 2022

- Review of early comments, additional outreach

March 2022

- Review of all comments received – categorization, themes (full report shortly after meeting)
- Discussion of potential plan revisions

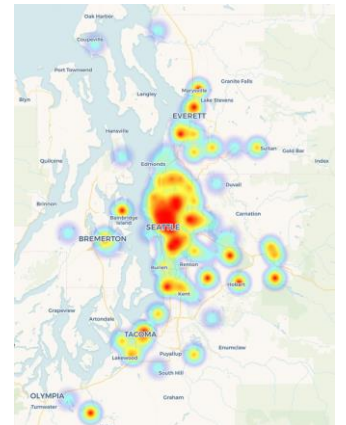
April 2022

- Discussion of potential plan revisions
- ***Recommendation of plan adoption to Executive Board***



Review of Comments

- Comments will be coded into **categories**
 - For example: climate, transit, safety, freight, projects, general, etc.
- Themes from comments in majority categories will be provided
 - I.e., deeper dive into the categories / topics that received the most comments
- Information will be provided on commenter location



Review of Comments

Comments will also be grouped into three **types**

- **General** – no plan changes necessary
- **Technical Corrections** – minor changes, corrections, clarifications; no policy implications
- **Board Review** - potential plan or work program implications; board direction sought

Full report will be provided and posted on PSRC's website – available after the meeting



Schedule

- Board review of comments March and April
- Discussion of proposed revisions –
 - From public comments through February 28
 - *Any additional board proposals please send by March 4th for review at meeting on March 10*
- Recommendation in April

Is there additional information that will be helpful to the board discussions?



Kelly McGourty
kmcgourty@psrc.org

Ben Bakkenta
bbakkenta@psrc.org

2022–2050
REGIONAL TRANSPORTATION PLAN



Puget Sound Regional Council