

# Adoption Schedule and Early Comment Themes

## Executive Board • February 24, 2022



Puget Sound Regional Council



# Regional Transportation Plan Next Steps

## February 2022

- Review of early comments, additional outreach



## March 2022

- Review of all comments received – categorization, themes, full report including staff responses
- Discussion of potential plan revisions

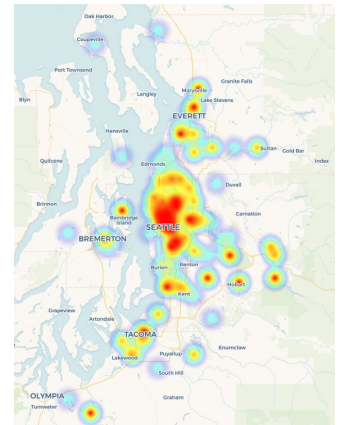
## April 2022

- Discussion of potential plan revisions
- ***Recommendation of plan adoption to General Assembly***



# Review of Comments

- Comments will be coded into **categories**
  - For example: climate, transit, safety, freight, projects, general, etc.
- Themes from comments in majority categories will be provided
  - I.e., deeper dive into the categories / topics that received the most comments
- Information will be provided on commenter location



Comments will also be grouped into three **types**

- **General** – no plan changes necessary
- **Technical Corrections** – minor changes, corrections, clarifications; no policy implications
- **Board Review** - potential plan or work program implications; board direction sought

Full report will be provided and posted on PSRC's website



# Current Outreach Efforts



**Online Open  
House**



**Community  
Focus Groups**



**Employer/Business  
Interviews**



**Virtual Public  
Meetings**



# Online Open House

- **Opportunity to submit comment**
  - January 13 through February 28, 2022
  - <https://engage.psrc.org/welcome-rtp>
    - Short videos available
- **Public Webinars**
  - Wednesday, February 2, 8-9 am
  - Tuesday, February 8, 12-1 pm
  - Wednesday, February 9, 5:30-6:30 pm



# Online Open House

## Welcome to the Regional Transportation Plan Open House



PSRC is seeking public comment on the draft Regional Transportation Plan through February 28, 2022.

Learn more about the draft plan from this online open house. It is organized around key elements of the plan, including: [climate](#), [equity](#), [transit](#), [walking and biking](#), the [Coordinated Mobility Plan](#), [system performance](#), [freight](#), [safety](#), the [financial strategy](#), the plan's [visualization tool](#), [maintenance and preservation](#), and [demand management](#). Each topic includes a short video with highlights of the plan and the opportunity to comment. [View all the topics](#). Download the draft plan from the column on the right.

We will also be hosting three webinars with a live presentation and time for questions. Check back here for the Zoom links:

- [Watch the video from February 2](#)
- Tuesday, February 8, 12-1 pm
- [Wednesday, February 9, 5:30-6:30 pm](#)

### What is the Regional Transportation Plan?

The Regional Transportation Plan is updated every four years to describe how the four-county central Puget Sound region plans for and improves the transportation system into the future, while addressing existing needs and expected growth.

Building from the policies and goals in [VISION 2050](#), the plan outlines investments the region is making in transit, rail, ferry, streets and highways, freight, bicycle and pedestrian and other systems to ensure the safe and efficient movement of people and goods. It lays the region on the path to:

- reduce greenhouse gas emissions and meet regional climate goals
- help create a healthier, safer, more equitable system with access to an expanded transit network



### View the draft plan documents

Draft plan by chapter

Full Draft Regional Transportation Plan

Appendices

### How to comment

- Use the [comment form](#)



#### System Performance

[Learn more](#)



#### Equity

[Learn more](#)



#### Transit

[Learn more](#)



#### Financial Strategy

[Learn more](#)



#### Climate

[Learn more](#)



#### Safety

[Learn more](#)



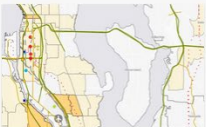
#### Maintenance and Preservation

[Learn more](#)



#### Walking and Biking

[Learn more](#)



#### Visualizing the Transportation System

[Learn more](#)



#### Freight

[Learn more](#)



#### Transportation Demand Management

[Learn more](#)



#### Coordinated Mobility Plan

[Learn more](#)



## Participants

- 65
- All four counties and beyond

## Transportation Priorities

- Reliable, well-connected transit
- Complete bike-ped networks
- Reliable, well-maintained roads

## Comment/Question Themes

- Active participants, great questions
- Clarifying plan content

## Videos Posted on Online Open House





## Comment on the draft Regional Transportation Plan

Your comment will be shared with PSRC's decisionmakers and become a part of the public record. You can type your comment directly into the comment form and/or use the file upload option to submit a word document or PDF letter.

### 1. Share your comments on the draft plan

### 2. Upload your comments as a word or PDF document

### 3. What is your zip code \*

This is to help us understand the geographic representation of the comments received.

0/10

## Comments by Letter

- Usually, majority of comments
- End of comment period

## Online Comment Form

- 71 comments, 53 commenters (through 2/22)
- Largely anonymous
- Mix of positive and negative



# Early Comments – Themes

- Several **project specific** comments (both for and against)
- Support for more **bicycle and pedestrian** infrastructure; transit connections
- **Accelerate** light rail and **transit implementation**
- **Opposition to** more **transit** investment
- **Safety**. Recognize **disparities** for people of color, people with lower incomes
- Support for **passenger-only ferries** and **water taxis**; reach and frequency
- **Support** for/**opposition** to **highway and roadway** investments (generally)
- Support for **user fees**/Road Usage Charges; **revenues**





## December

- 5 virtual focus groups, each county and younger adults (30 participants)
- BIPOC, lower income
- Participants compensated for their time

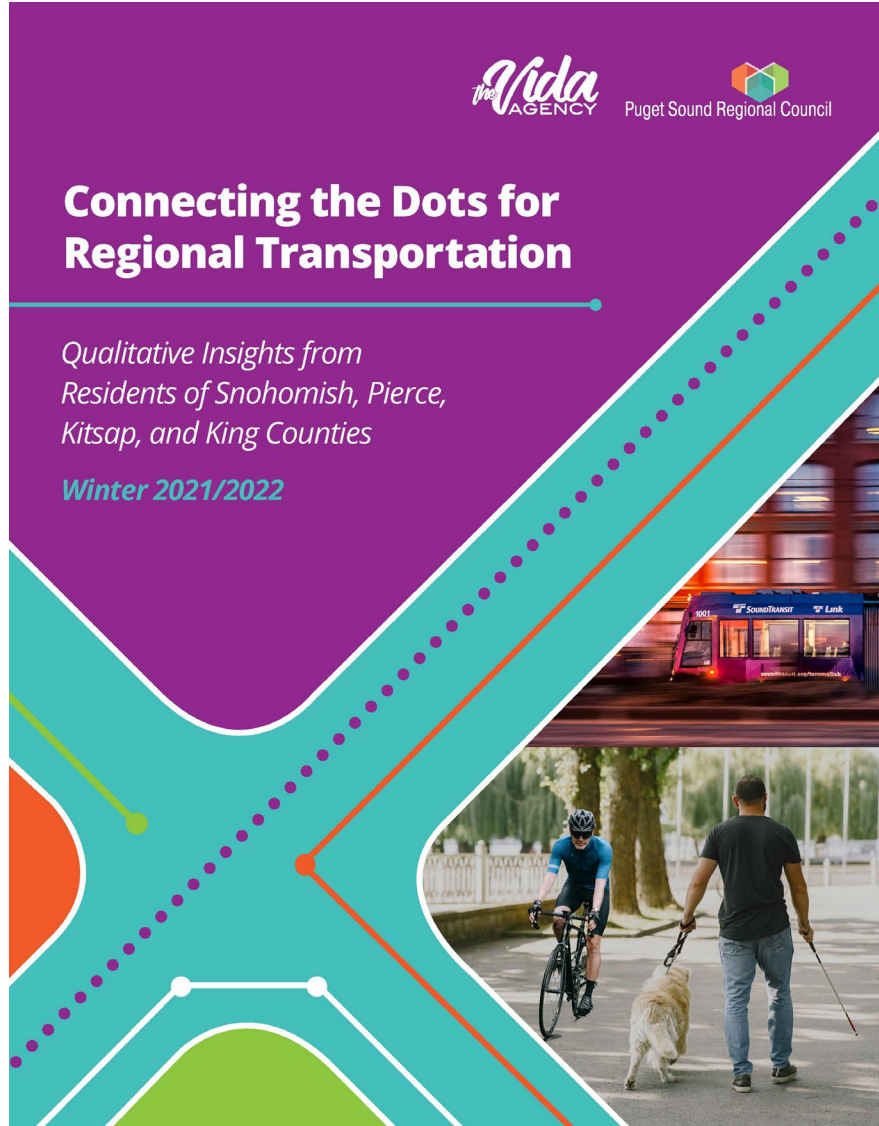
## Purpose

- Understand more about the needs of community members
- Increase representation





# Community Focus Groups



**Reports at <https://www.psrc.org/our-work/rtp>**

## Themes

- Reducing commute times
- Reducing reliance on single occupant vehicles
- Connecting pedestrian pathways; quality/maintenance
- Creating safer conditions
- Human infrastructure
- Region-wide coordination (transit)





## Major Employers and Business Interests February 2022

- Connect with current networks
- Builds off Regional Economic Strategy work

### Purpose

- Understand the priorities, concerns and opportunities of employers, business owners, industry groups



# Schedule



## Comment Period Closes February 28, 2022

### Online Open House

- Information about the draft plan, comment portal

### Board Review and Recommendation

- February through April 2022





Kelly McGourty  
[kmcgourty@psrc.org](mailto:kmcgourty@psrc.org)

Ben Bakkenta  
[bbakkenta@psrc.org](mailto:bbakkenta@psrc.org)

2022–2050  
**REGIONAL TRANSPORTATION PLAN**



Puget Sound Regional Council

