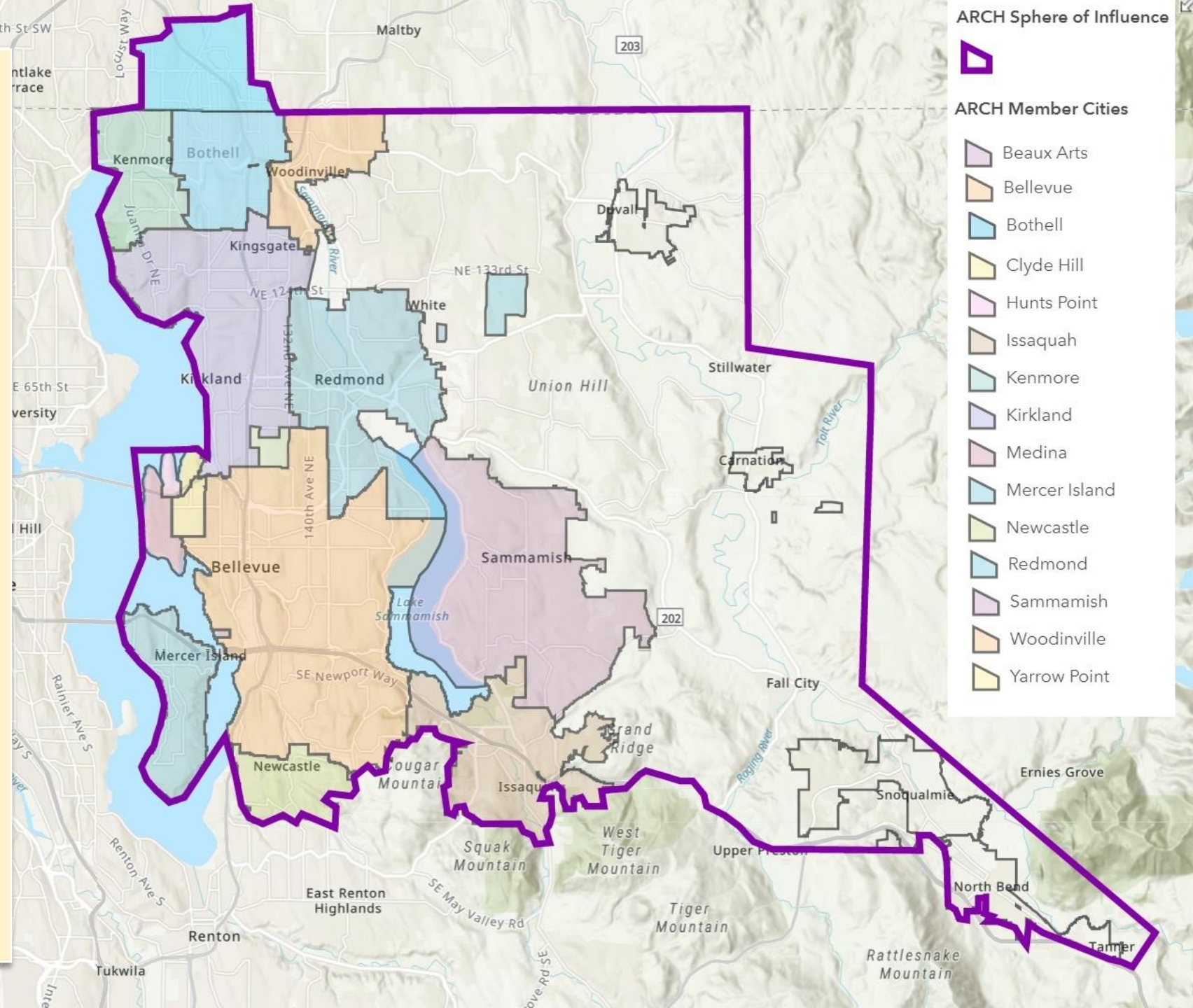


A Regional Coalition for Housing (ARCH)

Established in 1992 to create and preserve affordable housing for low and moderate income people in East King County through:

- Supporting housing policy and planning;
- Investing local dollars and leveraging other investment into affordable housing;
- Providing efficient shared administration of local housing programs; and
- Directly engaging the community with information and expertise



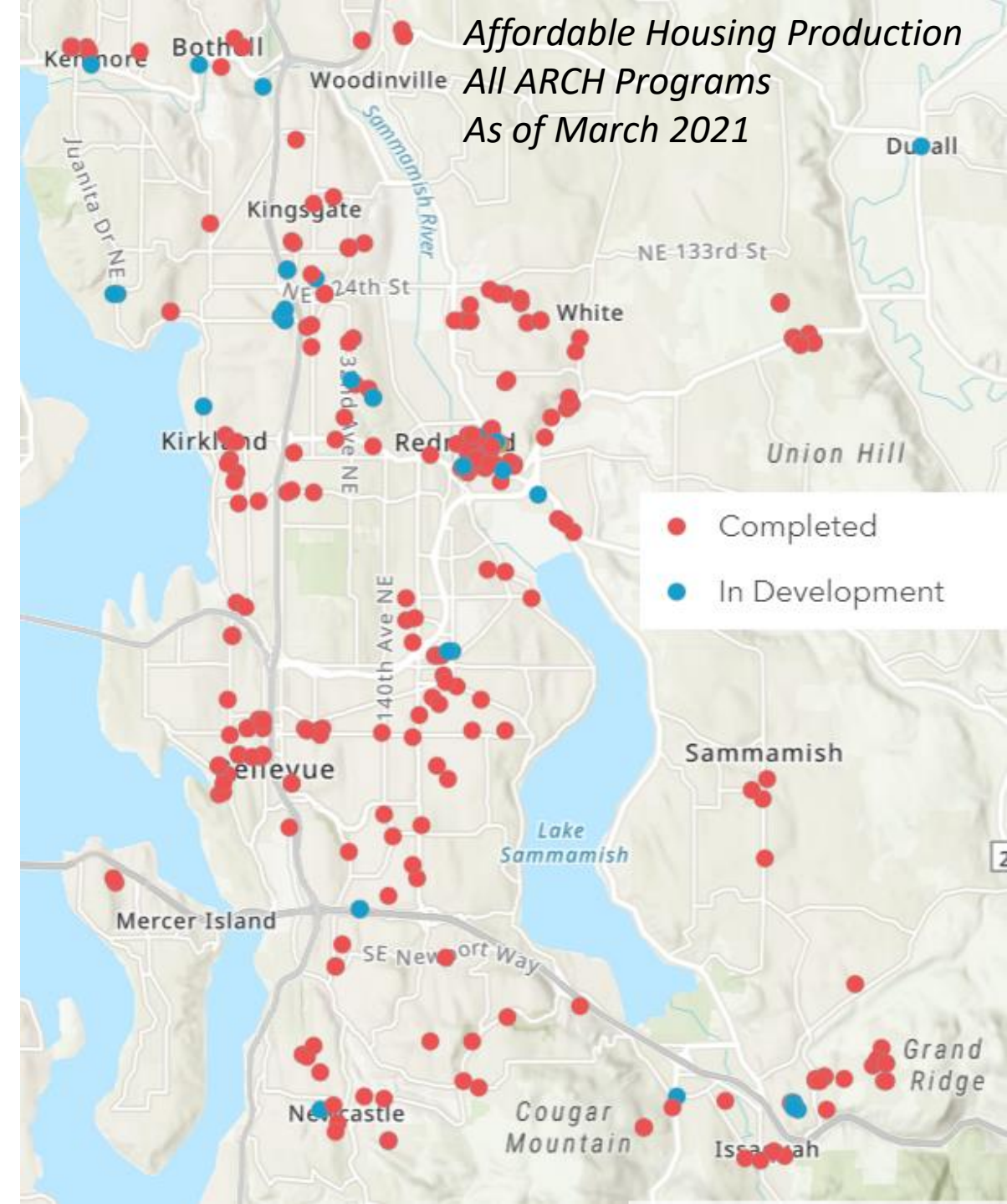
Impact

- **ARCH Trust Fund/Local Investment**

- Over 5,200 affordable units/beds in 100 projects
- \$88 million in local investments that leverage \$10 for every \$1 in local funds

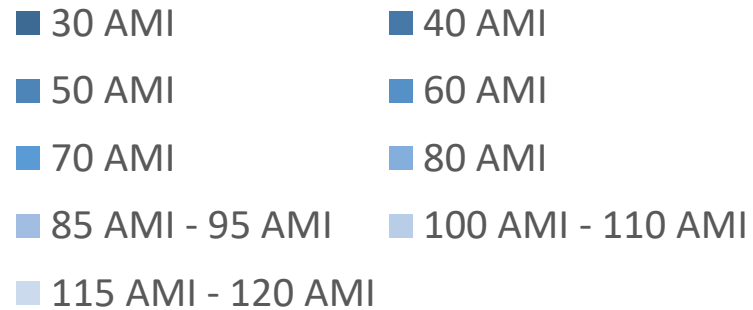
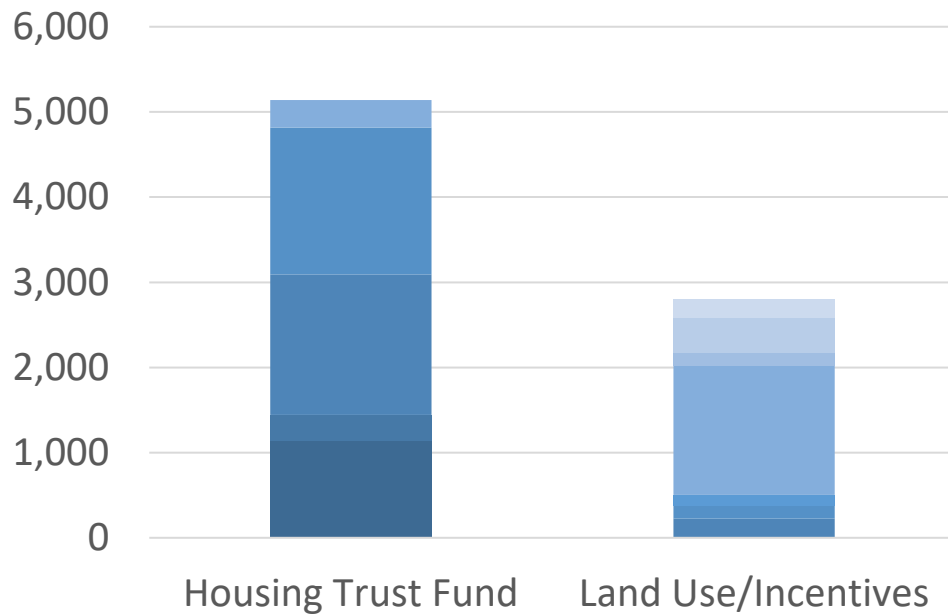
- **Incentive/Inclusionary Programs**

- Over 2,700 units in 191 developments
- 45 projects with 812 more units in development
- Affordable units integrated within market rate projects throughout the Eastside



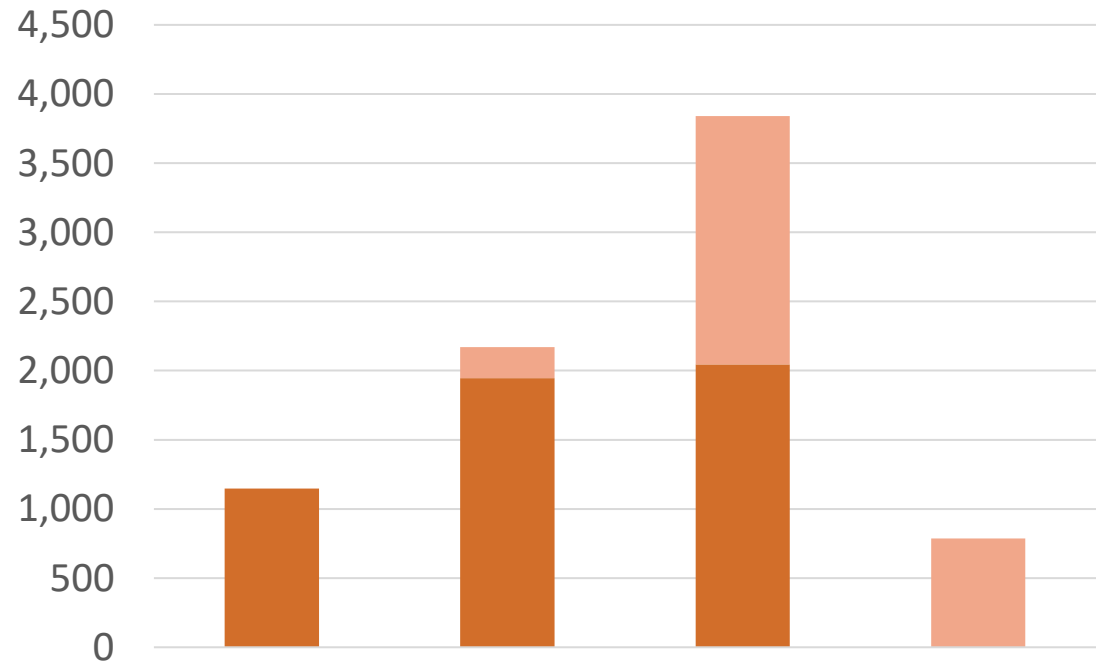
Production by Program / Affordability Level

through March 2021



Production by Affordability Level / Program

through March 2021



Current Focus Areas

- **Funding:**

- Deploying new sales tax funds and advocating for dedicated revenue sources
- Managing projects in Kenmore, Bothell, Kirkland, Redmond, Bellevue, and Issaquah

- **Special Projects:**

- Transit-oriented development sites
- City of Kenmore RFP

- **Incentive/Inclusionary Programs**

- Expanding inclusionary zoning to more jurisdictions, encouraging more incentives such as parking reductions
- Rent increase policies

- **Homeownership:**

- Renewed focus on stewardship of largest shared equity program in the state
- Re-positioning down payment assistance program
- Preservation of expiring covenants

- **Tenant Protections:**

- Recommendations to mitigate impacts of dramatic rent increases

- **Policy and Planning:**

- Regional targets and reporting
- Comp Plan Updates – housing needs analysis and policy support
- Housing Strategy support