



Puget Sound Regional Council

Regional Staff Committee | Remote Only

Date: Thursday, April 21, 2022 from 9:30-11:15 am

- 1. Welcome and Introductions (9:30)** – *Kelly Snyder, Snohomish County*
- 2. Reports (9:35)**
 - a. Meeting Summary for March 17, 2022*
 - b. PSRC Announcements and Updates
- 3. Discussion Item (9:45)**
 - a. Regional Housing Strategy Implementation – Typology* – *Laura Benjamin, PSRC*
- 4. Discussion Item (10:15)**
 - a. Regional Electric Vehicle Collaboration* – *Kelly McGourty, PSRC*
- 5. Discussion Item (10:45)**
 - a. 2022 Legislative Session Wrap-Up* – *Dave Andersen, Washington State Department of Commerce*
- 6. Next meeting: May 19, 2022**
- 7. Adjourn (11:15)**

*Supporting materials attached.

Zoom Remote Connection Details

- To join via a smart device or web browser, go to <https://psrc-org.zoom.us/j/87326846085?pwd=Z1RMUkd4eW1VajRlVWNIQVBiOTcrUT09> and enter Meeting ID: 873 2684 6085 and Passcode: 992584.
- To join by phone, call 888 475 4499 or 548 0276 and enter Meeting ID: 873 2684 6085 and Passcode: 992584.
- Sign language and communication material in alternate formats can be arranged given sufficient notice by calling (206) 464-7090 or TTY Relay 711.
- العربية | Arabic, 中文 | Chinese, Deutsch | German, Français | French, 한국어 | Korean, Русский | Russian, Español | Spanish, Tagalog, Tiếng việt | Vietnamese, visit <https://www.psrc.org/contact-center/language-assistance>.



Puget Sound Regional Council

Regional Staff Committee Meeting Summary

Date: March 17, 2022

Location: Remote Only

Presentations from the meeting are available on the PSRC website:

<https://www.psrc.org/rsc-meetings>. Audio recording of the meeting is available by request.

Introductions and Announcements

Andrea Spencer, Co-Chair, called the meeting to order at 9:30 am. Participants were asked to view the meeting attendance on the “chat” feature on Zoom, and phone-in participants were asked to identify themselves verbally.

Reports

Co-Chair Andrea Spencer welcomed the committee members and explained that PSRC staff would provide short updates on upcoming policy and Executive Board meetings and review the status of ongoing projects in the work program.

Paul Inghram, Director of Growth Management, told the committee that the Executive Board adopted the updated Regional Housing Strategy, and that PSRC staff are excited to get to work on implementation. He also mentioned that PSRC has launched the Economic Development Element Guide to assist local jurisdictions with updates to their comprehensive plans. More information on the Economic Development Element Guide can be found [here](#). Paul updated the committee that the PSRC General Assembly will be held on Thursday, May 26, from 10 am to 1 pm. He also reminded members that PSRC is seeking nominations for the VISION 2050 Awards Program through April 1, 2022.

Discussion: Puget Sound Data Trends

Craig Helmann, Director of Data, provided a background presentation on the latest trends in the Puget Sound region.

You can view the presentation [here](#).

For more information, contact Craig Helmann, Director of Data, at chelmann@psrc.org.

Discussion: Draft Regional Transportation Plan Public Review Comments and Adoption Schedule

Kelly McGourty, Director of Transportation Planning, provided an overview of the comments received on the draft Regional Transportation Plan, including the number and type of commenters and overall comment themes. Specific proposals for plan revisions that have been identified for board review and consideration were also discussed.

You can view the presentation [here](#).

For more information, contact Kelly McGourty, Director of Transportation Planning, at kmcgourty@psrc.org.

Adjourn

The meeting adjourned at 11:00 am.

Members and Alternates Represented at the Table

See attached attendance roster.

PSRC Staff and Other Guests Present

Mikayla Svob, PSRC
Paul Inghram, PSRC
Kelly McGourty, PSRC
Nancy Buonanno Grennan, PSRC
Craig Helmann, PSRC
John Niles
Maggie Moore, PSRC
Eric Clute, PSRC
Erika Harris, PSRC
Christopher Robertson, PSRC
Grant Gibson, PSRC
Erik Peterson, EPA
Tom Hingson, Everett Transit
Josh Brown, PSRC
Carolyn Downs, PSRC
Sarah Gutschow, PSRC
Gil Cerise, PSRC
Jason Thibedeau, PSRC
Brian Lee, PSRC
Pauline Mogilevsky

PSRC Regional Staff Committee - Attendance Roster

Jurisdiction		Member		Jurisdiction		Member	
King County	2	Ivan Miller, King County Executive Office	R	Federal, Regional, State, Tribal & Other Agencies			
		Sunaree Marshall, King County	R	FHWA	1	Matthew Kunic, Community Planner	
		Rebecca Maskin, Demographer Alt				Vacant Alt	
		McCaela Daffern, King County Alt		FTA	1	Linda Gehrke, Regional Administrator	
At-Large	2	Arun Sambataro, Equity & Social Justice	R			Ned Conroy, Community Planner Alt	
		Michael Kattermann, Bothell		Health Departments	1	Keri Moore, Snohomish Health Dist.	
		Vacant Alt				Amy Pow, Tacoma/Pierce Health Alt 1	R
		Vacant Alt				Marianne Seifert, Tacoma/Pierce Alt 2	
Transit	1	Peter Heffernan, King Co Metro Intergov Relations	R	Ports	1	Lindsay Wolpa, Port of Seattle, Gov. Affairs	
		Chris Arkills, King Co Metro Gov. Relations Alt				Deirdre Wilson, Northwest Seaport Alliance Alt	R
Economic Dev.	1	Ashton Allison, King Co Exec Office, Econ Dev		PSCAA	1	Amy Fowler, Policy Manager	R
		Hugo Garcia, King County Exec Office, Econ Dev				Kathy Strange, Air Quality Programs Director Alt	
Seattle	2	Michael Hubner, Long Range Planning	R	Puget Sound	1	Stephanie Suter, Planning Program Director	
		Jonathan Lewis, SDOT	R	Partnership		Dan Stonington, Planning Manager Alt	
		Patrice Carroll, Planning & Comm Dev Alt		Sound Transit	1	Matt Shelden, Planning & Innovation	
		Joanna Valencia, SDOT Alt				Alex Krieg, Planning & Integration Alt	R
Bellevue	1	Thara Johnson, Planning Manager, Comm Dev	R	Tribal Representatives	1	Vacant	
		Katie Kuciamba Halse, Transportation, Alt	R			Vacant Alt	
Cities/Towns	3	Chip Vincent, Renton, Planning, Co-Chair	R	US EPA	1	Susan Sturges	R
		Diana Hart, City of Woodinville	R			Vacant Alt	
		Brian Davis, City of Federal Way		US HUD	1	Jack Peters	
		Vacant Alt				Vacant Alt	
		Minnie Dhaliwal, City of Issaquah, Alt	R	WA Dept. of	1	Chris Green	
		Bob Sterbank, City of Snoqualmie, Alt		Commerce		Marie Davis	R
Kitsap County	1	Eric Baker, Policy	R	WSDOT	1	Thomas Noyes, WSDOT	R
		Jeff Rimack, Alt				April Delchamps, WSDOT Alt	
At-Large	1	Heather Wright, Planning Director		PSRC Committees			
		Mark Hofman, Interim Planning Director		PSRC Co-Chair	1	Ben Bakkenta, Director of Regional Planning	
		Jennifer Sutton, Senior Planner		BPAC	1	Thomas Noyes, WSDOT	R
Transit	1	Edward Coviello, Kitsap Transit				Eric Goodman, Community Transit Alt	
		Vacant Alt		FAC	1	Geri Poor, Port of Seattle, Gov. Affairs	R
Economic Dev.	1	Kathy Cocus, KEDA				Vacant Alt	
		Vacant Alt		RPEC	1	Doug McCormick, RPEC Chair	
Bremerton	1	Andrea Spencer, Comm Dev, Co-Chair	R			Russ Blount, Fife, RPEC Vice Chair Alt	R
		Garrett Jackson, Senior Planner, Alt		SNTC	1	Vacant	
Cities/Towns	1	Nick Bond, Comm Dev., Port Orchard				Vacant Alt	
		Mark Hofman, Interim Planning Director		TDM	1	Jennifer Hass, Community Transit	R
		Jennifer Sutton, Senior Planner				Sarah Spicer, City of Seattle, Alt	
Pierce County	1	Dan Cardwell, Long Range Planning		RTOC	1	Vacant	
		Vacant Alt				Vacant Alt	
At-Large	2	Jesse Hamashima, Transportation, Co-Chair	R	R = Remote attendance			
		Tiffany Speir, Lakewood, Planning					
		Ryan Windish, City of Sumner, Alt					
		Jason Sullivan, Bonney Lake, Plan. & Build., Alt	R				
Transit	1	Lindsey Sehmel, Pierce Transit	R				
		Darin Stavish, Pierce Transit, Alt					
		Duane Wakan, Pierce Transit, Alt					
Economic Dev	1	Rob Allen, Economic Development	R				
		Vacant Alt					
Tacoma	1	Peter Huffman, Planning & Dev Svcs					
		Vacant					
Cities/Towns	1	Katie Baker, Puyallup	R				
		David Swindale, University Place, Plan & Dev Alt					
Snohomish County	1	Mike McCrary, PDS Director	R				
		David Killingstad, Planning & Development					
At-Large	2	Kelly Snyder, Director, Co-Chair	R				
		Ken Klein, Executive Director					
		Jay Larson, Transportation Specialist, Alt					
		Joshua Dugan, Chief of Staff, Alt					
Transit	1	Roland Behee, Director of Planning					
		Vacant Alt					
Economic Dev	1	Neepaporn Boungjaktha, Economic Dev					
		Vacant Alt					
Everett	1	Yorik Stevens-Wajda, Planning Director	R				
		Becky Ableman McCrary, Long Range Planning Mg	R				
Cities/Towns	1	Russ Wright, Lake Stevens, Comm Dev. Director	R				
		Patricia Love, Stanwood, Comm Dev. Director, Alt.					
Total Members	51	Attended	34				



Puget Sound Regional Council

DISCUSSION ITEM

April 21, 2022

TO: Regional Staff Committee

FROM: Laura Benjamin, Senior Planner

SUBJECT: Regional Housing Strategy Implementation – Typology

IN BRIEF

Housing access and affordability are key policy areas in [VISION 2050](#), the region's long-range plan for growth. The committee will be provided an update on the development of a typology, an implementation item identified in the [Regional Housing Strategy](#). The committee will be asked to provide feedback on the draft housing typology as it is further refined.

DISCUSSION

The Regional Housing Strategy provides the region an opportunity to take a more coordinated approach to address housing access and affordability. However, no two communities are alike. They serve different functions in the region, such as dense downtown central business districts, smaller mixed-use neighborhood districts, and less dense single-family neighborhoods. At the local level, these places vary in their needs for housing investments and interventions, just as the people who live and work in these communities differ in their access to education, employment, housing, and other amenities and services to allow them to lead a successful life. Moreover, the local and regional planning context for these communities may differ greatly in terms of the amount and scale of future residential growth anticipated. Accordingly, a coordinated set of strategies are needed to help a community thrive and grow with equitable outcomes for current and future community members.

A typology is a way to retain a commonality of approach regionally while tailoring recommendations to specific locations based on their needs and opportunities. This classification framework assesses current conditions and utilizes existing regional policy frameworks – Regional Growth Strategy – to develop a framework to link appropriate implementation strategies to communities with common characteristics. The typology therefore has two primary functions: 1) to assess existing community conditions and 2) to identify appropriate tools and actions to support housing access and affordability now and as places change and grow.

Additionally, during scoping PSRC heard from stakeholders that “everyone has a role to play” and the strategy should focus on a few key goals and group actions based on local conditions to underscore that all jurisdictions have a role to play regardless of size, market conditions, demographics, or staff capacity. The typology is a way to address this feedback.

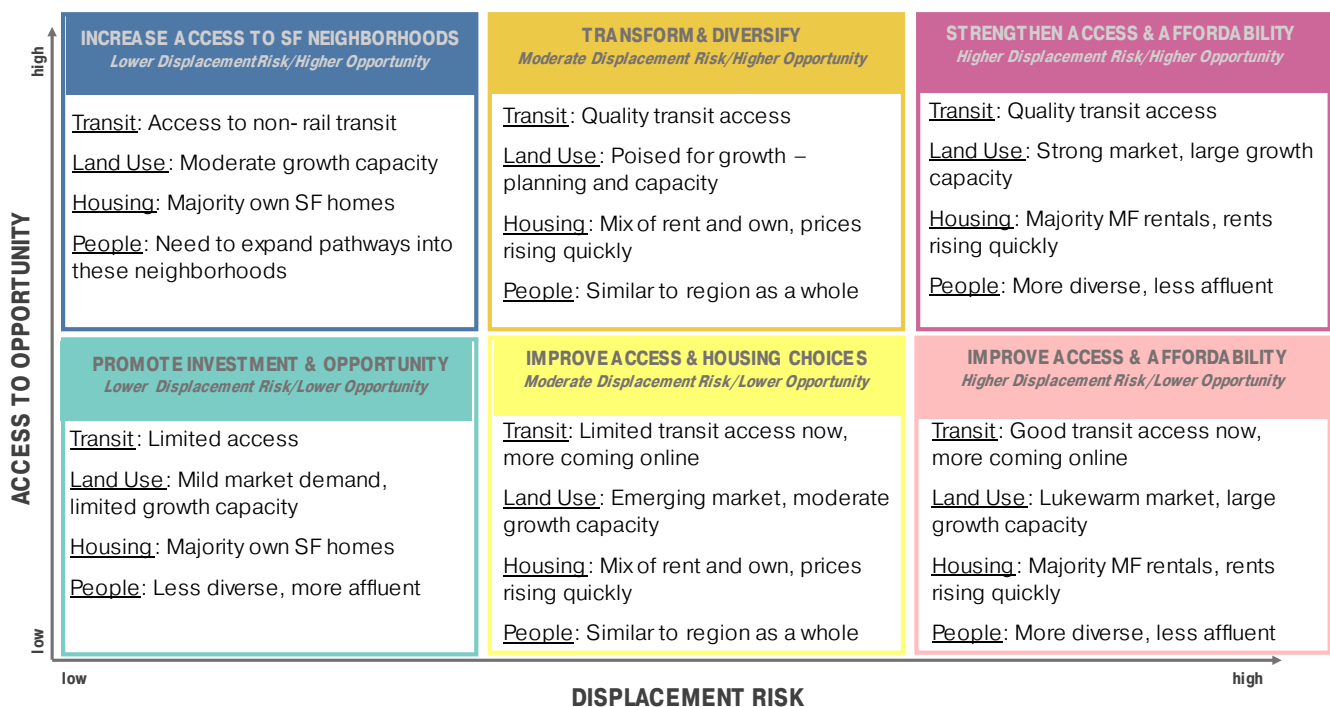
Peer Review

Before developing the draft housing typology, PSRC staff reviewed peer agency typologies to get a better sense of the various ways to develop a typology and current best practices. While the local planning context for these typologies vary, many of the examples reviewed included aspects that have been carried into the draft Regional Housing Strategy typology. Several of the typologies reviewed – [MORPC Regional Housing Strategy](#), [Housing NOLA](#), and [Metro Atlanta Housing Strategy](#) – focus on housing market factors such as changes in housing prices and construction trends but do not include demographics or other community needs as part of the analysis. The [Seattle 2035 Growth and Equity Analysis](#) and [Growing Transit Communities People + Place Typology](#) factor in both built environment and housing data and trends as well as components of displacement and community needs.

Development of the Draft Typology

The typology is grounded in [Displacement Risk Mapping](#) and [Opportunity Mapping](#), both of which were developed using Census tracts. The Opportunity Mapping is based on an “Opportunity Index,” which combines measures of five key elements of neighborhood opportunity and positive life outcomes: education, economic health, housing and neighborhood quality, mobility and transportation, and health and environment. The level of opportunity score (very low, low, moderate, high, very high) is determined by sorting all census tracts into quintiles based on their index scores. The Displacement Risk Mapping uses a composite of indicators representing five elements of neighborhood displacement risks: socio-demographics, transportation qualities, neighborhood characteristics, housing, and civic engagement. The data from these five displacement indicators were compiled into a comprehensive index of displacement risk for all census tracts in the region.

There are three categories of Displacement Risks (lower, moderate, higher) and five of Opportunities (very low, low, moderate, high, very high). These two categorization schemes were combined to construct the typology. To help keep the number of categories in the typology to a manageable number and to align with VISION 2050 equity analyses, the very low and low Opportunity areas were grouped together as “Lower Opportunity” and the other three were grouped as “Higher Opportunity.” The result includes six combinations of Displacement Risks and Opportunities. To factor the Regional Growth Strategy, higher growth places – Metro, Core, and HCT Cities – are identified as “Higher Growth” places.



The image above shows the six types of places identified in the draft typology, including the planning objective (name in CAPS) and overview of community characteristics. See Attachment A for a regional map showing the six types of places identified in the draft typology. The forthcoming meeting presentation will provide more information on the six types of places.

Early Stakeholder Conversations

PSRC staff reached out to a handful of stakeholders in early 2022 to get input on the first draft typology. Stakeholders included staff from:

- ARCH
- City of Everett
- City of Fife
- City of Lynnwood
- King County

During these conversations, staff were asked to provide feedback on the draft typology, including if the types of places reflect the different types of places in their respective jurisdictions and if the materials to support the typology make sense.

Overall, stakeholders felt the draft typology is on the right track. Many acknowledged that no typology will do it all or make everyone happy, but the draft approach is generally liked. Based on stakeholder feedback, the draft typology was refined to better focus on the importance of high-capacity transit and to help make the maps more intuitive. The narrative describing the different types of places was also updated based on feedback that the technical analysis behind the types of places is solid but should be supported by more narrative to help the types of places move from the hypothetical to the real world.

Questions for the committee:

- Do the categories generally reflect the different types of places in the region?
- Are any types of places and/or community aspects not captured by the draft typology?
- Do the planning objectives for each grouping seem to be aligned?
- Is there anything else to consider before starting to identify tools and actions for each type of place?

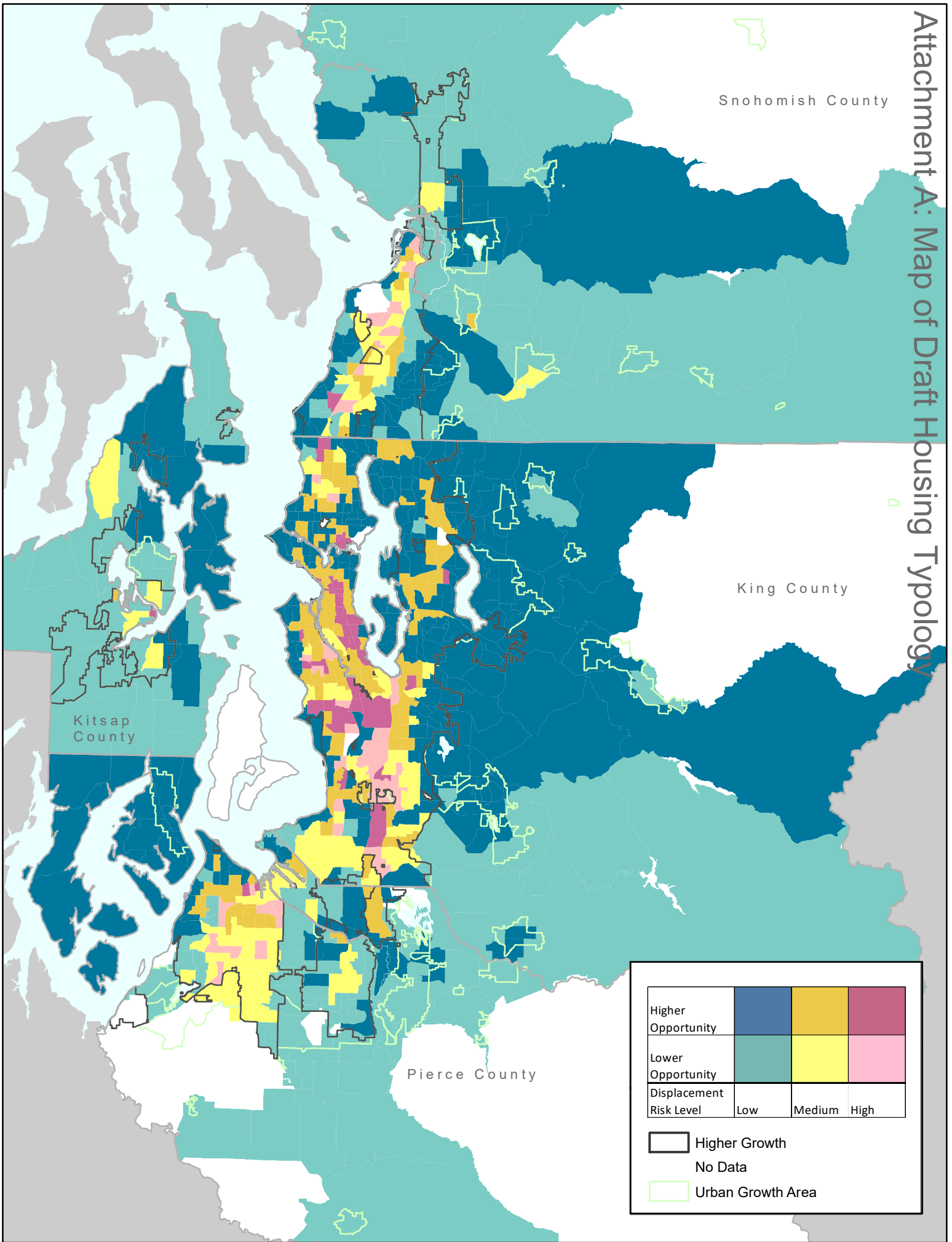
Next Steps

Based on RSC feedback, PSRC staff will bring an updated draft typology for review at a future meeting. The next iteration of the draft typology will also identify potential tools and action from the Regional Housing Strategy and Housing Innovations Program (HIP) for each type of place.

Lead Staff

For more information, contact Laura Benjamin, Senior Planner, at lbenjamin@psrc.org or 206-464-7134, or Paul Inghram, Director of Growth Management, at pingham@psrc.org or 206-464-7549.

Attachment A: Map of Draft Housing Typology





Puget Sound Regional Council

DISCUSSION ITEM

April 21, 2022

TO: Regional Staff Committee

FROM: Kelly McGourty, Director of Transportation Planning

SUBJECT: Regional Electric Vehicle Collaboration

IN BRIEF

At the April 2022 meeting, the Regional Staff Committee will be provided an update on the work of the Regional Electric Vehicle Collaboration, a partnership effort between PSRC and the Puget Sound Clean Air Agency.

DISCUSSION

At their July 2021 meeting, the Regional Staff Committee heard a briefing on the joint efforts of PSRC and the Puget Sound Clean Air Agency on the Regional Electric Vehicle (REV) Collaboration, including the development of a clearinghouse and several events hosted to date. Information was also provided by the Department of Commerce on recently passed legislation related to electric vehicles.

Transitioning vehicles to cleaner, alternative fuels is critical to achieving the region's climate goals. An implementation plan is called for in VISION 2050 and is detailed further in the Regional Transportation Plan, including the ongoing partnership via the REV Collaboration.

Staff from both PSRC and the Puget Sound Clean Air Agency will provide an update on the current status and ongoing work of the REV Collaboration, as well as various other efforts related to the overall transition to zero emission vehicles.

Lead Staff

For more information contact Kelly McGourty, Director of Transportation Planning, at kmcgourty@psrc.org or 206-971-3601.



Puget Sound Regional Council

DISCUSSION ITEM

April 21, 2022

To: Regional Staff Committee
From: Ben Bakkenta, Director of Regional Planning
Subject: **2022 Legislative Session Wrap-Up**

IN BRIEF

At the April 21st Regional Staff Committee meeting, Dave Andersen, the managing director for the Washington State Department of Commerce's Growth Management Services Division, will provide the committee with an overview of Growth Management related bills passed and considered in the 2022 legislative session.

DISCUSSION

The 2022 Regular Session of the Washington State Legislature adjourned sine die on March 10, 2022. Each year, the Legislature considers bills related to the Growth Management Act and local and regional planning. Commerce's Growth Management Services team tracks bills related to the Growth Management Act. At the April committee meeting, Mr. Andersen will provide an overview of key bills that passed, as well as those that may return in future legislative sessions. These include bills related to housing, climate, SEPA, tribal coordination, urban growth areas, and vesting. Mr. Andersen will also discuss funding and staffing changes at the Departments of Commerce, Natural Resources, Fish and Wildlife, and Ecology and their programs and resources that provide local assistance.

Committee members will have an opportunity to ask questions about new and proposed legislation and work to implement legislation that passed.

Lead Staff

If you have any questions, please contact Ben Bakkenta, Director of Regional Planning, at bbakkenta@psrc.org.