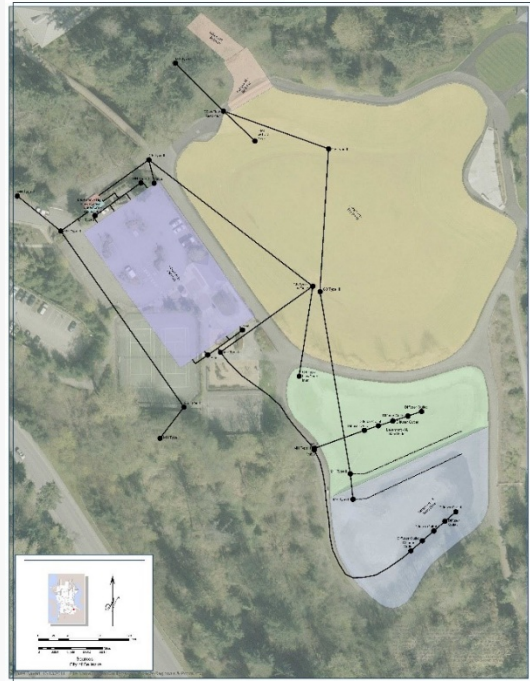


LAKEMONT COMMUNITY PARK

City of Bellevue



Facility type

Stormwater detention vault and sand filter treatment basins within a larger community park

Construction date

1990s

Facility size

Approximately 5 acres in a 16-acre park

Drainage basin area

215 acres (Lakemont residential neighborhood)

Facility Description

One of the oldest stormwater parks in the area, the Lakemont facility was built by the developer as part of the agreement to develop the Lakemont community in the 1990s. The city was concerned about protecting Lewis Creek and Lake Sammamish from erosion, phosphorus, and other pollution.

Lakemont Community Park is 16 acres and features a play area, two picnic shelters, a basketball court, two tennis courts, a skate bowl, trails, restrooms, and a softball field. More than three miles of multiple-use trails cut through the Lakemont neighborhood, connecting Lakemont Park and Lewis Creek Park. Lakemont Park's distinguishing feature is a large stormwater management system.

This system reduces flooding and helps protect Lewis Creek and Lake Sammamish from pollution. From the park, soft surface trails lead down to Lewis Creek open space.

The stormwater system at Lakemont Community Park is a prominent feature consisting of a large detention vault below the parking lot that traps sediment and pollutants, two sand filter basins, and a high flow storage basin. Typically, water is directed into the vault then onto the sand filter basins before sending the treated water to Lewis Creek. During major storms, a flow control diverts overflow to the high flow storage area. Although a rare occurrence, if the water level reaches the top of the storage facility, it flows over the spillway into Lewis Creek.

Departments involved Parks, Utilities

Contractors No information available

Public engagement No information available (built by developer on undeveloped land)

Maintenance and monitoring

The Parks department maintains the amenities and landscaping within the Park. The Utilities Department maintains the infrastructure for the stormwater facility including the vault, sand filters and underground piping. The Stormwater facility is inspected annually with maintenance of the sand filters performed on average every 3 to 5 years and cleaning of the vault every 5 to 8 years. Two large valves operate the water distribution to the sand filters. To date, these have been replaced once over the life of the facility. Water quality monitoring of the facility was integrated into the construction of the facility but has since been deactivated after establishing that the facility was performing as designed.

Challenges and lessons learned

- This is an older facility that is working well with low maintenance needs. Bellevue has many regional stormwater facilities in its parks, such as vaults under tennis and basketball courts.
- The Utilities Department collaborates regularly with the Parks Department to manage the surface water drainage system. Much of the City's stream network is protected from development by incorporating them into the City's parks and open space network. Trails are also a part of this citywide network.
- The city is working on a citywide Watershed Management Plan, bringing together multiple departments to look for opportunities to improve the water quality of Bellevue.
- The city is looking at opportunities to include additional stormwater parks. Regional facilities are evaluated as opportunities arise but are difficult to site based on the topography of the city creating smaller drainage basins.

Cost Not available

Funding Sources Funded by the developer

For more information City of Bellevue Storm and Surface Water Utility (425-452-7840)

Additional information

- Park webpage: <https://bellevuewa.gov/city-government/departments/parks/parks-and-trails/parks/lakemont-community-park>