

# Regional Transportation Plan Update

Bicycle Pedestrian Advisory Committee – May 10, 2022



# RTP Schedule

2022–2050  
**REGIONAL TRANSPORTATION PLAN**

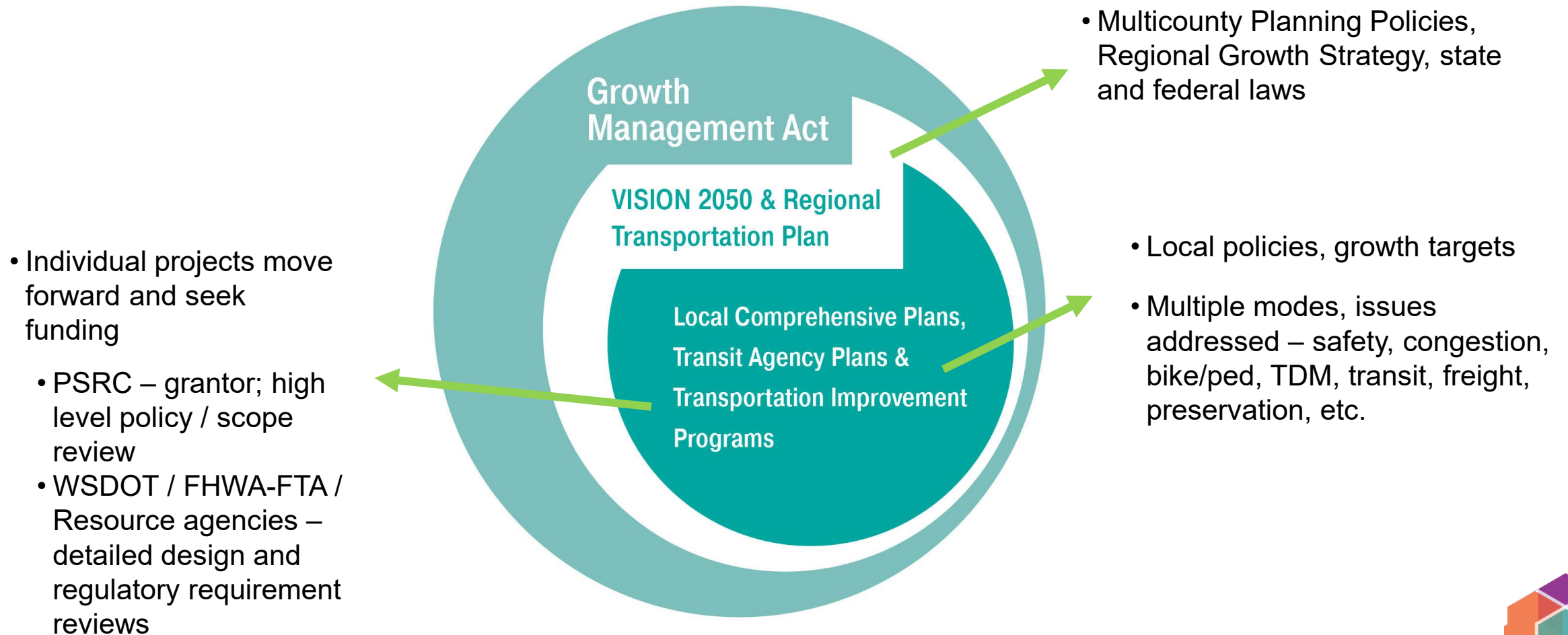


Next Step: May 26<sup>th</sup> Adoption by PSRC General Assembly



# RTP Background

## Local policy and project implementation





# Draft RTP Implementation

Potential bicycle- and pedestrian-related work program topics arising from the draft RTP:

- Mobility needs identified in Coordinated Mobility Plan
  - Associated with age, income, and disability
- Access to Transit
- Bicycle and Pedestrian Data



# Mobility Needs from the Coordinated Mobility Plan

- **Shorter travel times** when taking regular transit or specialized transportation
- **More transportation services** at times when they are needed
- **Accessible information** about available services and language assistance
- Better **access to health and wellness destinations** (such as medical facilities, pharmacies, or grocery stores)
- More **affordable transportation** for families with low incomes
- More **connected ADA-accessible infrastructure** (such as connected sidewalks or wheelchair-accessible curb ramps)



# Regional Policy Support for Transit Access

- VISION 2050 includes goal to attract 65% of residential growth and 75% of employment growth to regional growth centers and within walking distance of **high-capacity transit station areas**
- Access to transit is a **key policy focus area** of the draft 2022-2050 Regional Transportation Plan
- Feedback for Coordinated Mobility Plan update showed importance of transit access for **people with special transportation needs**



# Previous PSRC Transit Access Work

- **Transit Access Assessment (2016)**
  - ✓ Interviews with local elected officials and regional case studies
  - ✓ Findings about transit access in the region
- **Transit Access Checklist and Toolkit (2017)**
  - ✓ Framework for assessing existing transit access conditions
  - ✓ Tools for improving transit access
- **Transit Access and Parking Strategy (2018 RTP)**
  - ✓ Guiding principles and key strategies for improved transit access



# BPAC Feedback for Draft RTP

In November 2020, the BPAC discussed and provided feedback on access to transit for the draft RTP:

- Prioritize improving and **better connecting** active transportation facilities
- Support **alignment of facility planning** by different jurisdictions
- Assess availability of **bike/ped accommodations** at stations and on vehicles
- Incorporate **equity** in planning and prioritizing active transportation facilities
- Review current **policies/guidelines/regulations** for facilities in station areas





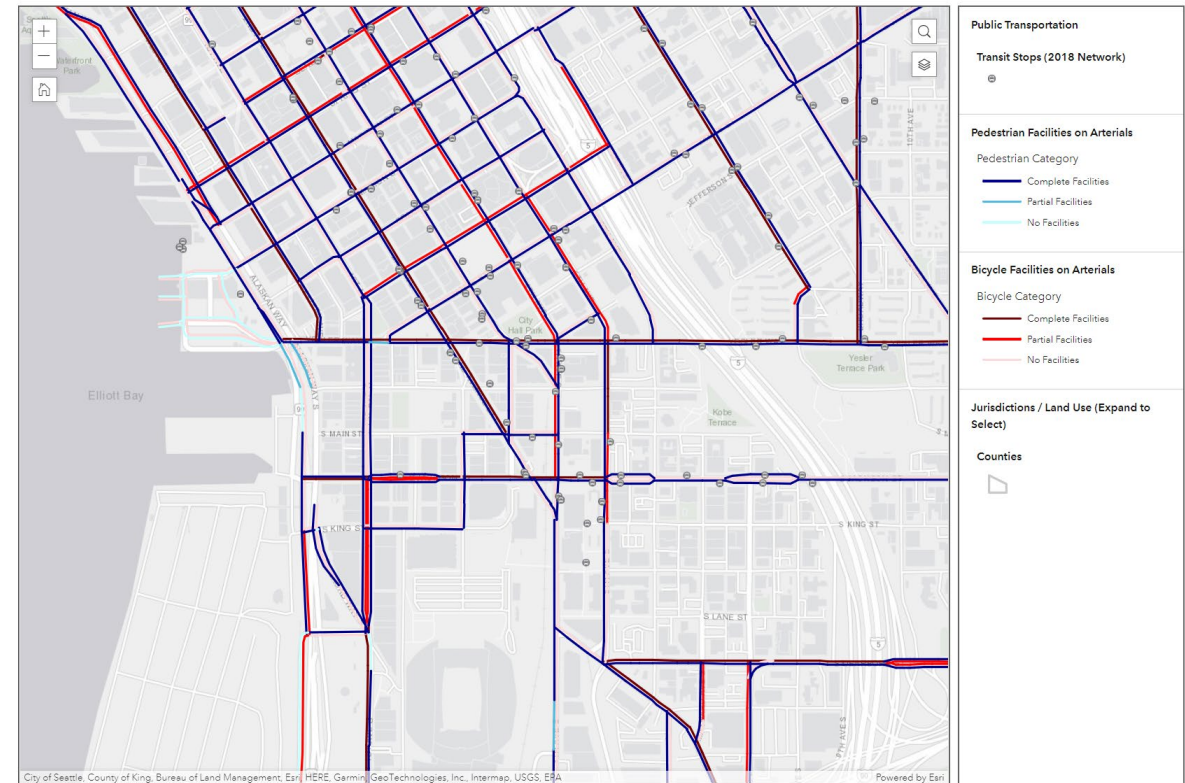
# Draft RTP: Bicycle and Pedestrian Data

- Current and projected **trends in walking and biking** travel
  - Trips by regional geographies and demographics
  - Average time and length of trips
- Bicycle/pedestrian **facilities on arterials and shared use** paths
  - Existing facilities by regional geographies and equity focus areas
  - Planned investments to 2050
- Regional **safety trends** for active transportation
- **Policies/guidelines/regulations** for improving bike/ped facilities



# Draft RTP: Transit Access Resources

- Bike/ped facility data included in [Transportation System Visualization Tool](#)
- The draft RTP includes:
  - Analysis of facility gaps in station areas
  - Examples of local projects and programs for improving access



# TOC Transit Access Feedback

At its April 2022 meeting, the **Transportation Operators Committee** (TOC) provided initial feedback on the potential regional work program for access to transit:

- Clarify **roles and responsibilities** for transit access improvements
- Identify facility **gaps** in station areas and **priority areas** for improvement
- **Track progress** in meeting regional transit access goals
- Provide **technical guidance** on TOD, Complete Streets, etc.



# Access to Transit Key Questions

- What are the **biggest challenges** for improving transit access in your jurisdictions/service areas?
- What is your **agency's role** in improving transit access in your jurisdiction? How does your agency **coordinate** with others with transit access role?
- How does your agency **identify** bicycle and pedestrian facility **gaps** in station areas?
- How does your agency **prioritize projects** for improving active transportation access in station areas?
- What are your **biggest lessons learned** from your agency's work in improving transit access for walking and biking?



# TOC Joint Workshop - Key Questions

- What active transportation planning questions do you have for transit agencies?
- What active transportation planning questions do you have for local jurisdictions?

