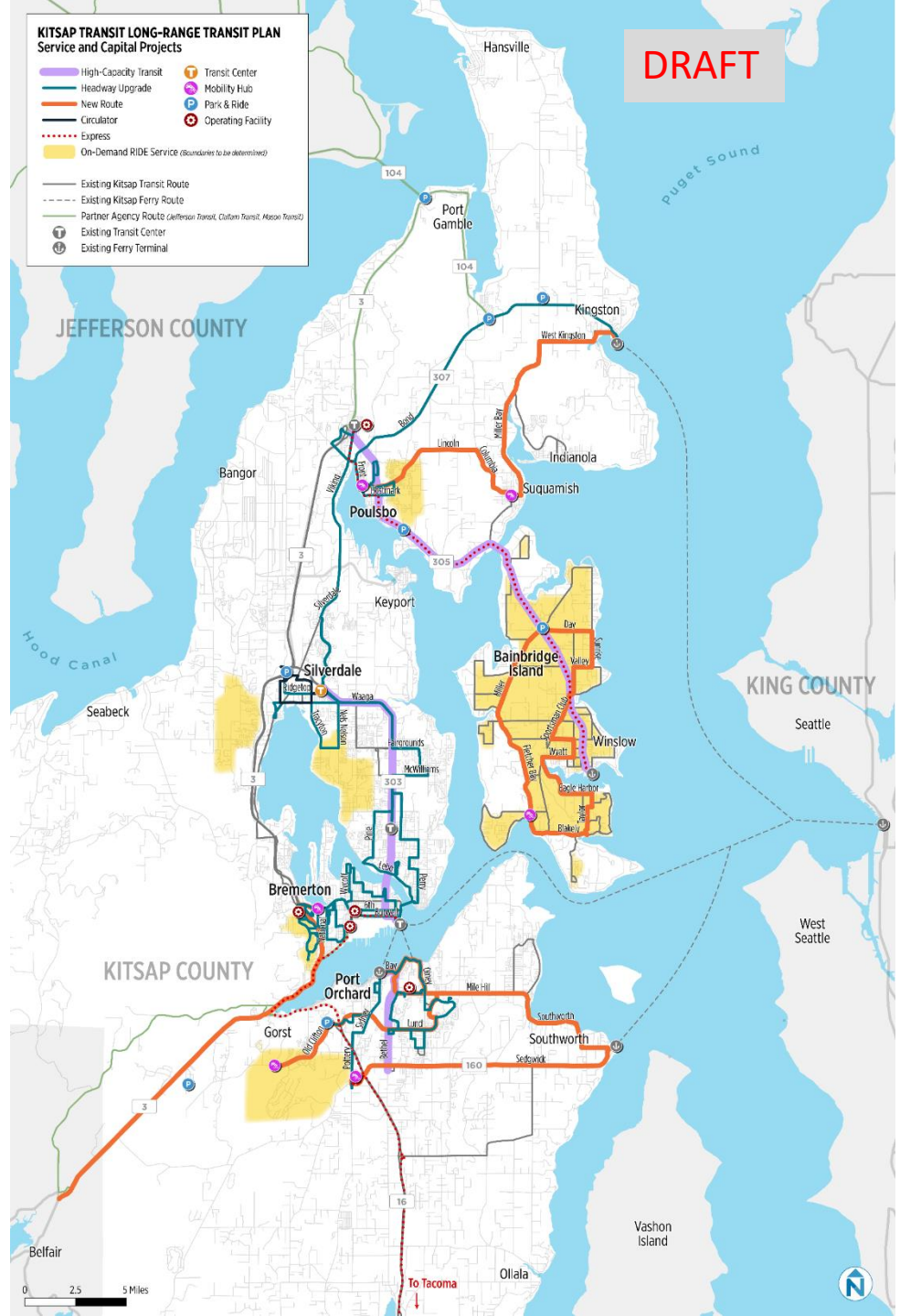


Our Long-Range Transit Plan and Access to Transit



- The Transit Vision
- Communicating the Vision and Access Transformation
- Access in undeveloped Urban Areas
- Increasing transit service as the planning / development occurs:
- Implementing the LRTP Vision / Working together

Transit Vision





Communicating the Vision of a transit community outside of major urban centers

- SR 303 Bremerton to Silverdale
 - Relatively Flat
 - Available parcels (storm water and zoning)
 - Heavy Traffic Volumes 30-40k AADT
 - Designated HCT corridor in Vision 2050
 - Station Area Planning – 2024 Comprehensive Plans
- Challenges
 - Access to Low density residential nearby
 - Lack of a transit vision for the corridor
 - Large roundabouts planned
 - Parking ratios
 - WSDOT SR 303 Corridor Study



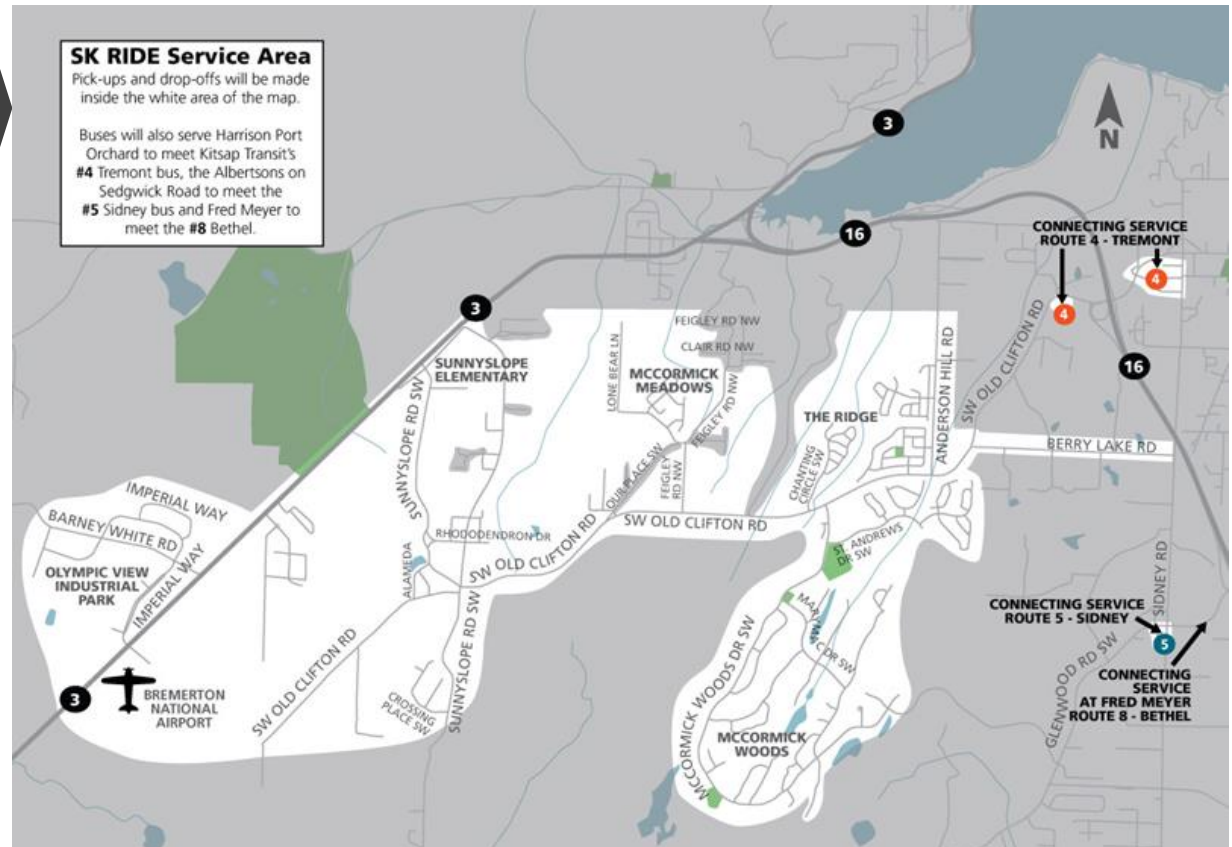
Access Transformation

- 16th Street Sacramento
 - From parking lots to mixed use
 - Heavy Traffic Volumes
 - Light Rail Access
 - Variety of housing choices
 - Public Spaces
 - CADA (Capitol Area Development Authority)

Access in undeveloped urban areas

- SK Ride

- Connecting to activity centers served by traditional transit
- Backlog of transit stops with poor access due to the transition from rural to urban



Increasing Transit Service

- Meeting Demand
 - Lots of challenges from funding to labor.....
 - Smaller transit systems / small urban areas face unique challenges

Clipboard		Font		Alignment		Number		Styles		Cells		Editing		Analysis	
07															
SB-3 AM		ORCA Routes						212		217		SB-3 AM			
REPORT CHARLESTON:		5:12 AM		>>> RELIEF AT BTC		1:10 PM		EFFECTIVE DATE:		7/10/22		REPORT CHARLESTON:		5:12 AM	
DEPART CHARLESTON:		5:32 AM		>>> ARRIVE CHARLESTON:		1:20 PM		>>> TOTAL HOURS PAID:		8:18		DEPART CHARLESTON:		5:32 AM	
				>>> OFF DUTY:		1:30 PM									
Please call out Timepoints & "ADA" designated calls.				CHANGES MARKED WITH >>> SYMBOLS								Please call out Timepoints & "ADA" designated			
CODE 199 - OUT OF SERVICE		212 BREM-SILV WEST		217		217 BREM-SILV EAST		212, 235		212 BREM-SILV WEST		217			
5:32 AM DEADHEAD TO BREM TC		>>> CODE 2123 - TO WEST BREM TC		>>>		CODE 2173 - TO WHEATON WAY TC		>>>		CODE 2123 - TO WEST BREM TC		>>>			
5:42 AM ARRIVE BREM TC		7:15 AM BREM TC		WFSF Arr 7:00 AM		9:30 AM SILVERDALE TC		9:56 AM WHEATON WAY TC		11:45 AM BREM TC		WFSF Arr 11:00 AM			
				FF Arr 6:35 AM				Sp 1				FF Arr 9:10 AM			
212 BREM-SILV WEST		217		>>>		CODE 2172 - TO BREMERTON TC		>>>		11:58 AM WEST BREMERTON TC					
>>> CODE 2123 - TO WEST BREM TC		7:28 AM WEST BREMERTON TC		>>>		10:02 AM OLYMPIC COLLEGE		>>>		CODE 2121 - TO SILVERDALE TC		>>>			
5:45 AM BREM TC		WFSF Arr NA		>>>		10:10 AM BREM TC		WFSF Dep 11:10 AM		12:04 PM AUSTIN DR AT NAVAL HOSP					
		FF Arr NA		>>>		Space 5		FF Dep 1:55 PM		12:09 PM CHICO WAY AT ELDORADO					
5:58 AM WEST BREMERTON TC		7:39 AM CHICO WAY AT ELDORADO		>>>		7:43 AM SILVERDALE WAY AT BYRON		>>>		12:13 PM SILVERDALE WAY AT BYRON					
>>> CODE 2121 - TO SILVERDALE TC		7:55 AM SILVERDALE TC		>>>		212 BREM-SILV WEST		217		12:25 PM SILVERDALE TC					
6:04 AM AUSTIN DR AT WENCKER		>>>		CODE 2123 - TO WEST BREM TC		10:15 AM BREM TC		WFSF Arr 9:35 AM		212 BREM-SILV EAST		212, 235			
6:09 AM CHICO WAY AT ELDORADO		>>>		CODE 2173 - TO WHEATON WAY TC		10:28 AM WEST BREMERTON TC		>>>		CODE 2173 - TO WHEATON WAY TC		>>>			
6:13 AM SILVERDALE WAY AT BYRON		>>>		CODE 2121 - TO SILVERDALE TC		8:00 AM SILVERDALE TC		>>>		12:30 PM SILVERDALE TC					
6:25 AM SILVERDALE TC		>>>		CODE 2172 - TO BREMERTON TC		8:26 AM WHEATON WAY TC		Sp 1		12:56 PM WHEATON WAY TC		Sp 1			
212 BREM-SILV EAST		212		>>>		8:32 AM OLYMPIC COLLEGE		>>>		CODE 2172 - TO BREMERTON TC		>>>			
>>> CODE 2173 - TO WHEATON WAY TC		8:40 AM BREM TC		>>>		WFSF Dep 8:45 AM		>>>		1:02 PM OLYMPIC COLLEGE					
6:30 AM SILVERDALE TC		>>>		CODE 2123 - TO WEST BREM TC		Space 5		FF Dep 1:55 PM		1:10 PM BREM TC		WFSF Dep 1:30 PM			
6:51 AM WHEATON WAY TC		>>>		CODE 2172 - TO BREMERTON TC		212 BREM-SILV WEST		217		Space 5		FF Dep 1:55 PM			
>>> CODE 2172 - TO BREMERTON TC		6:57 AM OLYMPIC COLLEGE		>>>		8:45 AM BTC		>>>		CODE 2121 FOR RELIEF AT BTC		>>>			
7:05 AM BREM TC		>>>		CODE 2173 - TO WHEATON WAY TC		8:58 AM WEST BREMERTON TC		>>>		1:10 PM RETURN TO CHARLESTON		>>>			
Space 5		>>>		CODE 2172 - TO BREMERTON TC		9:04 AM AUSTIN DR AT WENCKER		>>>		1:20 PM ARRIVE CHARLESTON		>>>			
FF Dep 7:25 AM		>>>		CODE 2123 - TO WEST BREM TC		9:09 AM CHICO WAY AT ELDORADO		>>>				>>>			
		>>>		CODE 2172 - TO BREMERTON TC		9:13 AM SILVERDALE WAY AT BYRON		>>>				>>>			
		>>>		CODE 2121 - TO SILVERDALE TC		9:25 AM SILVERDALE TC		>>>				>>>			
		>>>		CODE 2173 - TO WHEATON WAY TC				>>>				>>>			
		>>>		CODE 2172 - TO BREMERTON TC				>>>				>>>			
		>>>		CODE 2123 - TO WEST BREM TC				>>>				>>>			
		>>>		CODE 2172 - TO BREMERTON TC				>>>				>>>			
		>>>		CODE 2121 - TO SILVERDALE TC				>>>				>>>			
		>>>		CODE 2173 - TO WHEATON WAY TC				>>>				>>>			
		>>>		CODE 2172 - TO BREMERTON TC				>>>				>>>			
		>>>		CODE 2123 - TO WEST BREM TC				>>>				>>>			
		>>>		CODE 2172 - TO BREMERTON TC				>>>				>>>			
		>>>		CODE 2121 - TO SILVERDALE TC				>>>				>>>			
		>>>		CODE 2173 - TO WHEATON WAY TC				>>>				>>>			
		>>>		CODE 2172 - TO BREMERTON TC				>>>				>>>			
		>>>		CODE 2123 - TO WEST BREM TC				>>>				>>>			
		>>>		CODE 2172 - TO BREMERTON TC				>>>				>>>			
		>>>		CODE 2121 - TO SILVERDALE TC				>>>				>>>			
		>>>		CODE 2173 - TO WHEATON WAY TC				>>>				>>>			
		>>>		CODE 2172 - TO BREMERTON TC				>>>				>>>			
		>>>		CODE 2123 - TO WEST BREM TC				>>>				>>>			
		>>>		CODE 2172 - TO BREMERTON TC				>>>				>>>			
		>>>		CODE 2121 - TO SILVERDALE TC				>>>				>>>			
		>>>		CODE 2173 - TO WHEATON WAY TC				>>>				>>>			
		>>>		CODE 2172 - TO BREMERTON TC				>>>				>>>			
		>>>		CODE 2123 - TO WEST BREM TC				>>>				>>>			
		>>>		CODE 2172 - TO BREMERTON TC				>>>				>>>			
		>>>		CODE 2121 - TO SILVERDALE TC				>>>				>>>			
		>>>		CODE 2173 - TO WHEATON WAY TC				>>>				>>>			
		>>>		CODE 2172 - TO BREMERTON TC				>>>				>>>			
		>>>		CODE 2123 - TO WEST BREM TC				>>>				>>>			
		>>>		CODE 2172 - TO BREMERTON TC				>>>				>>>			
		>>>		CODE 2121 - TO SILVERDALE TC				>>>				>>>			
		>>>		CODE 2173 - TO WHEATON WAY TC				>>>				>>>			
		>>>		CODE 2172 - TO BREMERTON TC				>>>				>>>			
		>>>		CODE 2123 - TO WEST BREM TC				>>>				>>>			
		>>>		CODE 2172 - TO BREMERTON TC				>>>				>>>			
		>>>		CODE 2121 - TO SILVERDALE TC				>>>				>>>			
		>>>		CODE 2173 - TO WHEATON WAY TC				>>>				>>>			
		>>>		CODE 2172 - TO BREMERTON TC				>>>				>>>			
		>>>		CODE 2123 - TO WEST BREM TC				>>>				>>>			
		>>>		CODE 2172 - TO BREMERTON TC				>>>				>>>			
		>>>		CODE 2121 - TO SILVERDALE TC				>>>				>>>			
		>>>		CODE 2173 - TO WHEATON WAY TC				>>>				>>>			
		>>>		CODE 2172 - TO BREMERTON TC				>>>				>>>			
		>>>		CODE 2123 - TO WEST BREM TC				>>>				>>>			
		>>>		CODE 2172 - TO BREMERTON TC				>>>				>>>			
		>>>		CODE 2121 - TO SILVERDALE TC				>>>				>>>			
		>>>		CODE 2173 - TO WHEATON WAY TC				>>>				>>>			
		>>>		CODE 2172 - TO BREMERTON TC				>>>				>>>			
		>>>		CODE 2123 - TO WEST BREM TC				>>>				>>>			
		>>>		CODE 2172 - TO BREMERTON TC				>>>				>>>			
		>>>		CODE 2121 - TO SILVERDALE TC				>>>				>>>			
		>>>		CODE 2173 - TO WHEATON WAY TC				>>>				>>>			
		>>>		CODE 2172 - TO BREMERTON TC				>>>				>>>			
		>>>		CODE 2123 - TO WEST BREM TC				>>>				>>>			
		>>>		CODE 2172 - TO BREMERTON TC				>>>				>>>			
		>>>		CODE 2121 - TO SILVERDALE TC				>>>				>>>			
		>>>		CODE 2173 - TO WHEATON WAY TC				>>>				>>>			
		>>>		CODE 2172 - TO BREMERTON TC				>>>				>>>			
		>>>		CODE 2123 - TO WEST BREM TC				>>>				>>>			
		>>>		CODE 2172 - TO BREMERTON TC				>>>				>>>			
		>>>		CODE 2121 - TO SILVERDALE TC				>>>				>>>			
		>>>		CODE 2173 - TO WHEATON WAY TC				>>>				>>>			
		>>>		CODE 2172 - TO BREMERTON TC				>>>				>>>			
		>>>		CODE 2123 - TO WEST BREM TC				>>>				>>>			
		>>>		CODE 2172 - TO BREMERTON TC				>>>				>>>			
		>>>		CODE 2121 - TO SILVERDALE TC				>>>				>>>			
		>>>		CODE 2173 - TO WHEATON WAY TC				>>>				>>>			
		>>>		CODE 2172 - TO BREMERTON TC				>>>				>>>			
		>>>		CODE 2123 - TO WEST BREM TC				>>>				>>>			
		>>>		CODE 2172 - TO BREMERTON TC				>>>				>>>			
		>>>		CODE 2121 - TO SILVERDALE TC				>>>				>>>			
		>>>		CODE 2173 - TO WHEATON WAY TC				>>>				>>>			
		>>>		CODE 2172 - TO BREMERTON TC				>>>				>>>			
		>>>		CODE 2123 - TO WEST BREM TC				>>>				>>>			
		>>>		CODE 2172 - TO BREMERTON TC				>>>				>>>			
		>>>		CODE 2121 - TO SILVERDALE TC				>>>				>>>			
		>>>		CODE 2173 - TO WHEATON WAY TC				>>>				>>>			
		>>>		CODE 2172 - TO BREMERTON TC				>>>				>>>			
		>>>		CODE 2123 - TO WEST BREM TC				>>>				>>>			
		>>>		CODE 2172 - TO BREMERTON TC				>>>				>>>			
		>>>		CODE 2121 - TO SILVERDALE TC				>>>				>>>			
		>>>		CODE 2173 - TO WHEATON WAY TC				>>>				>>>			
		>>>		CODE 2172 - TO BREMERTON TC				>>>				>>>			
		>>>		CODE 2123 - TO WEST BREM TC				>>>				>>>			
		>>>		CODE 2172 - TO BREMERTON TC				>>>				>>>			
		>>>		CODE 2121 - TO SILVERDALE TC				>>>				>>>			
		>>>		CODE 2173 - TO WHEATON WAY TC				>>>				>>>			
		>>>		CODE 2172 - TO BREMERTON TC				>>>				>>>			
		>>>		CODE 2123 - TO WEST BREM TC				>>>				>>>			
		>>>		CODE 2172 - TO BREMERTON TC				>>>				>>>			
		>>>		CODE 2121 - TO SILVERDALE TC				>>>				>>>			
		>>>		CODE 2173 - TO WHEATON WAY TC				>>>				>>>			
		>>>		CODE 2172 - TO BREMERTON TC				>>>				>>>			
		>>>		CODE 2123 - TO WEST BREM TC				>>>				>>>			
		>>>		CODE 2172 - TO BREMERTON TC				>>>				>>>			
		>>>		CODE 2121 - TO SILVERDALE TC				>>>				>>>			
		>>>		CODE 2173 - TO WHEATON WAY TC				>>>				>>>			
		>>>													

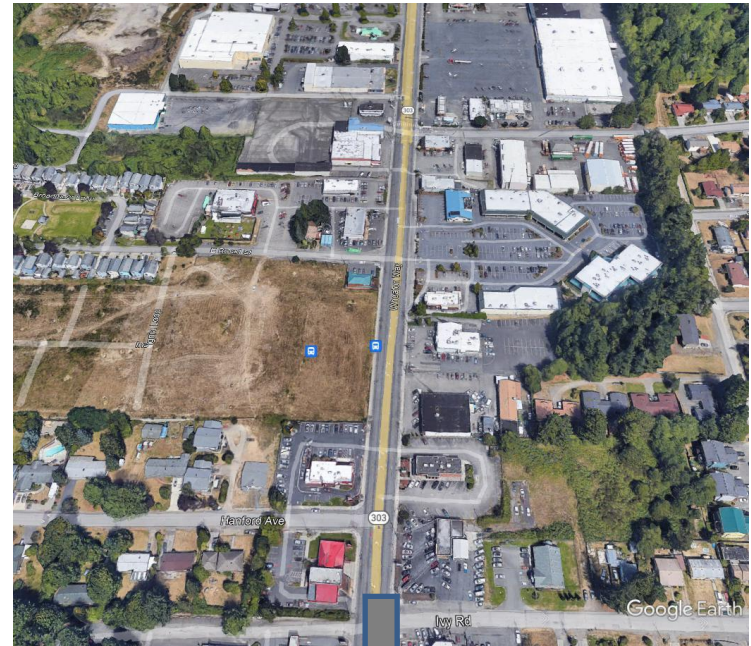
Implementation

- Sub-Area Plans
 - Non-motorized Access Transit
 - Vehicle Access Design
 - Parking
- Regional Centers
 - Balance between auto centric design and non-motorized access / experience
- Linking Centers
 - Increase services from less dense urban areas to Centers
 - Future Vision 2050 Station Areas



Working Together

- Cities / County / Tribes
 - Community Development
 - Public Works
 - Councils and Commissions
- Developers
 - Residential
 - Commercial
- Community Groups
 - Chambers of Commerce
 - Social Services
 - Etc.





Questions?

Contact:

Edward Coviello, AICP

360-824-4919

edwardc@kitsaptransit.com

Our LRTP Webpage:

<https://www.kitsaptransit.com/2040>

