

Community Planning Portal

2.0

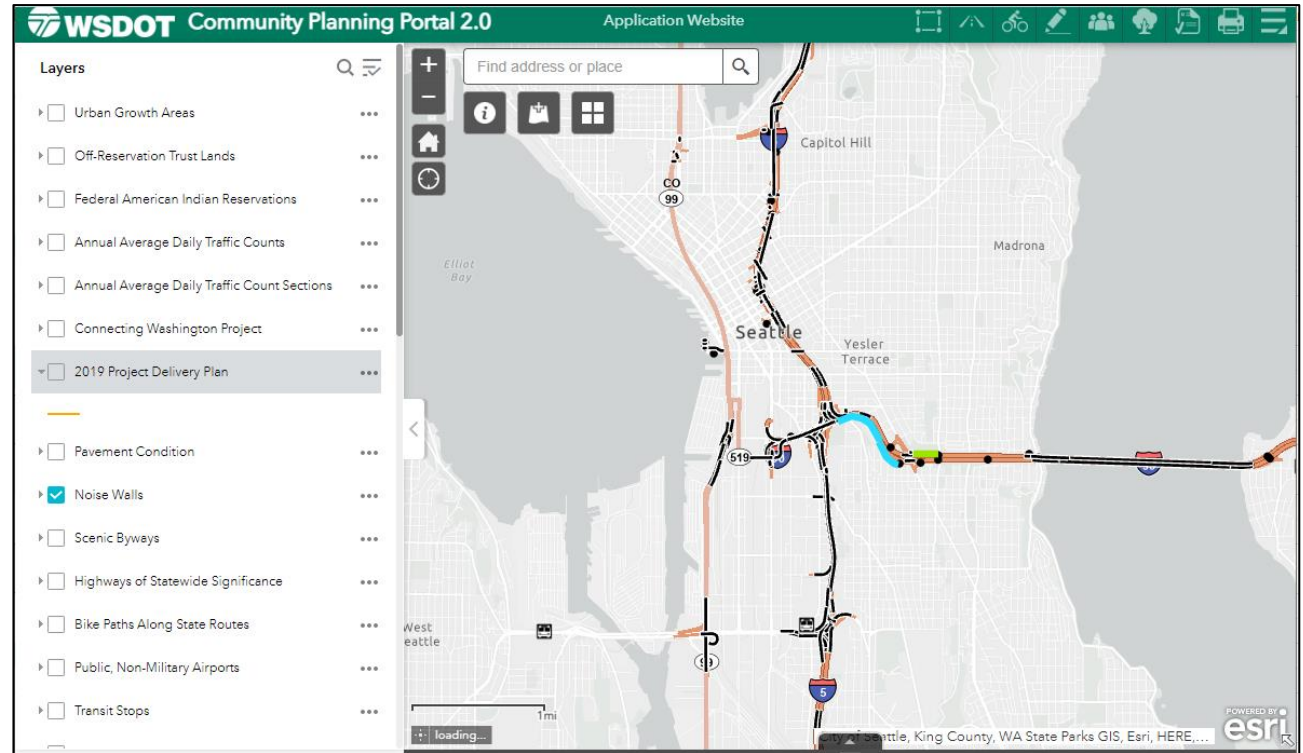
Kyle Miller, Transportation Planning Specialist, WSDOT Statewide Planning Office

Passport to 2044: Comprehensive Plan Workshop

October 18, 2022

What is the Portal?

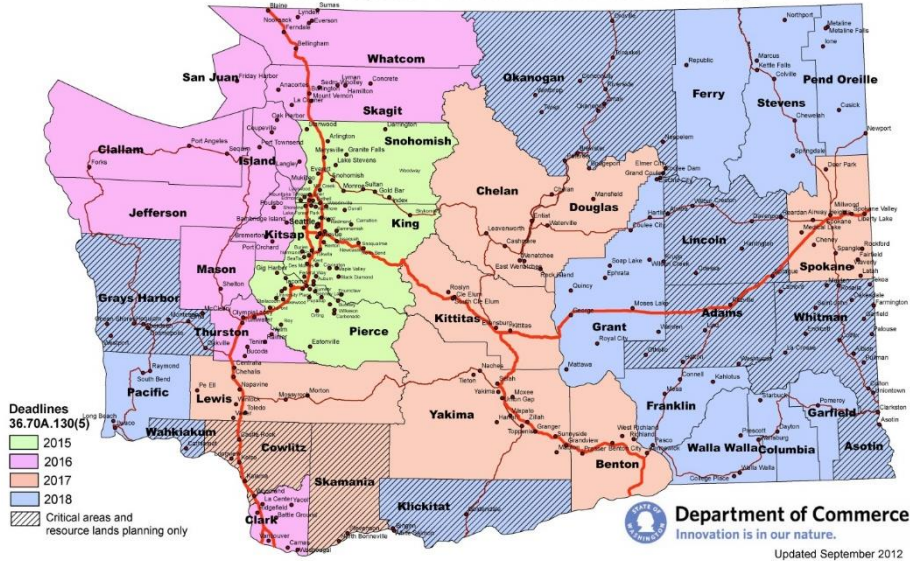
- “The WSDOT Community Planning Portal is an online forum for state, regional, and local transportation planners to share transportation and land use data.”
- ... a mapping and data sharing platform
- ... anyone can view WSDOT datasets (and content from other organizations).
- ... use any web browser



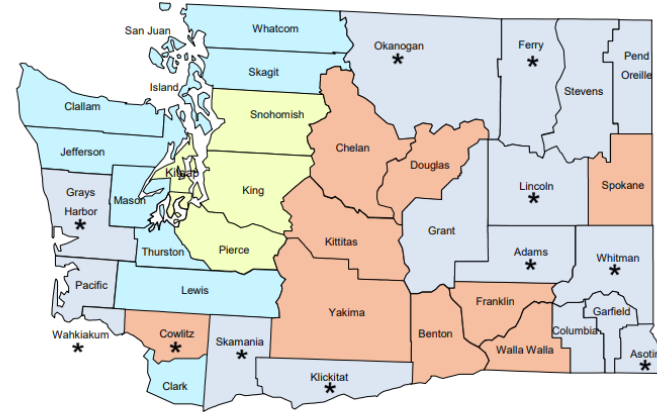
Community Planning Portal 2.0

Why Create the Portal?

GMA Update Schedule: RCW 36.70A.130(5)



Growth Management Services
Periodic Update Schedule
RCW 36.70A.130



Contact:
Dave Andersen
509.434.4491
Dave.Andersen@commerce.wa.gov

Periodic Update Schedule; Due June 30 of Indicated Year



* Starred counties are partially planning under the Growth Management Act

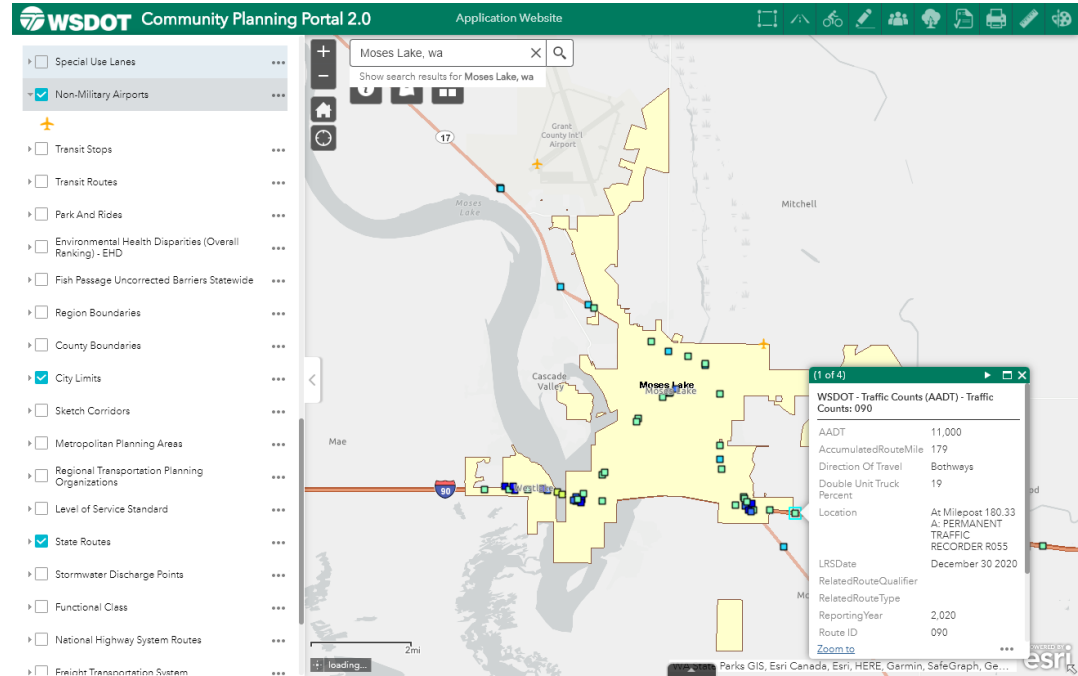
Why Create the Portal?

- Provide data on the state transportation system...
- Within the context of each jurisdiction...
- To lead to closer partnerships...
- So that together, we can identify opportunities to...
 - Operate more efficiently.
 - Manage demand more effectively.
 - Invest more strategically.

Community Planning Portal 2.0

2.0 modernizes the CPP by:

- Configuring a custom ArcGIS Online web app which allows for more functionality and a user-friendly experience.
- Used categories to structure the data resources.
- And overall mirroring the original CPP while simply enhancing the usability.



Demonstration of CPP 2.0



<https://wsdot.maps.arcgis.com/home/item.html?id=ce820375f5244d65b079b888ba18d9f4>

Other WSDOT Resources

- Land use and transportation planning resource page:
<https://wsdot.wa.gov/engineering-standards/planning-guidance/land-use-transportation-planning>
- Transportation Efficient Communities:
<https://www.transportationefficient.org/>
- Complete Streets for state transportation projects:
<https://wsdot.wa.gov/construction-planning/complete-streets>
- Statewide Active Transportation Plan:
<https://wsdot.wa.gov/construction-planning/statewide-plans/active-transportation-plan>
- Funding (Pedestrian Bicycle Program, Safe Routes to School, Regional Mobility Grants, etc.):
<https://www.transportationefficient.org/wp-content/uploads/2021/08/June2021TransFundingSourcesinWA-1.pdf>

Discussion and Questions

- Constructive feedback is always welcome!
- Any new data sets you would like to see?
- Community Planning Portal 1.0 was retired August 1, 2022.
- Please Explore the Community Planning Portal 2.0 - <https://wsdot.maps.arcgis.com/home/item.html?id=ce820375f5244d65b079b888ba18d9f4>
- Please provide any feedback to:
 - Kyle Miller, Kyle.miller@wsdot.wa.gov