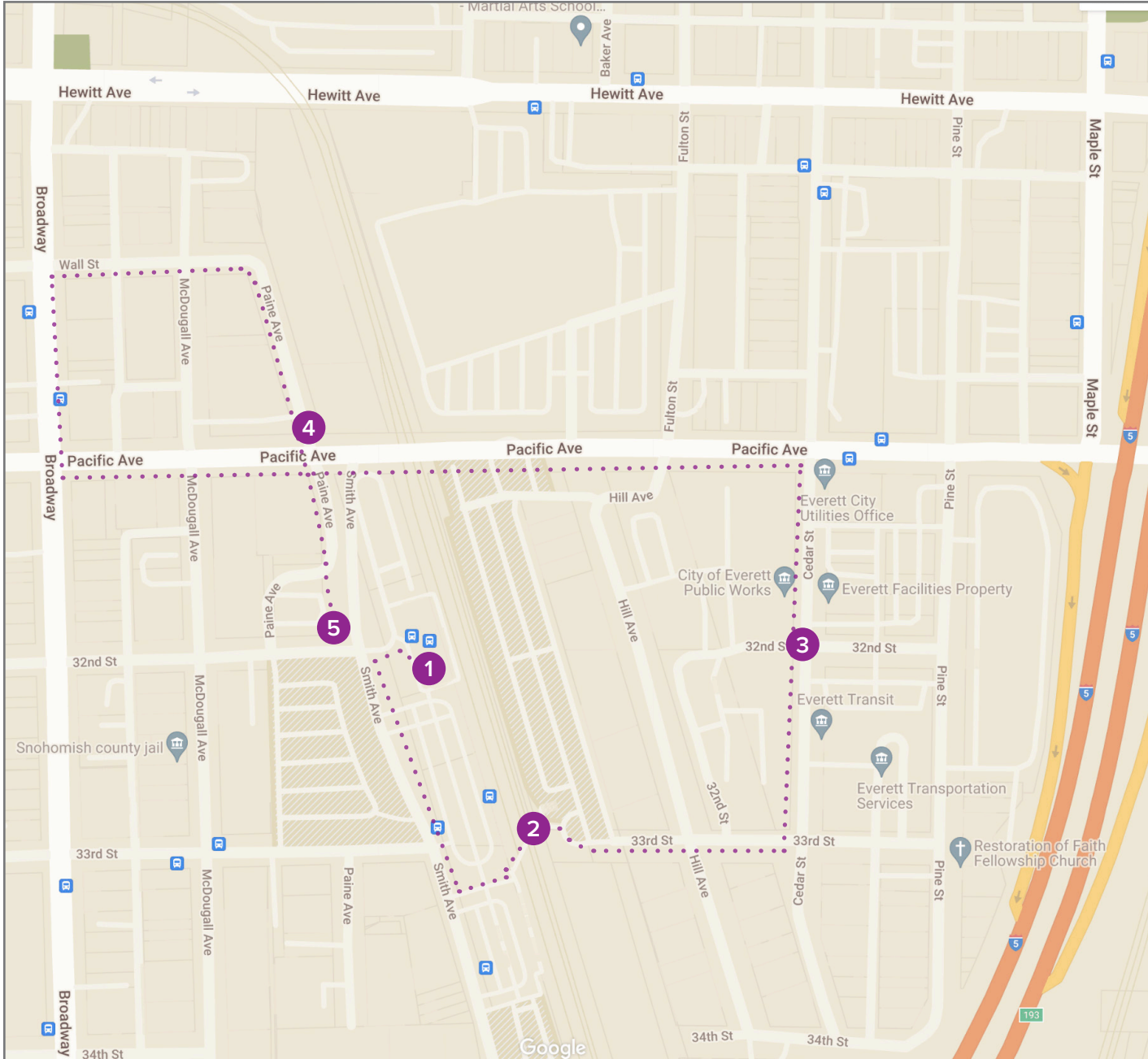




WALKING TOUR GUIDE | Everett



Puget Sound Regional Council



Featured Site

- 1 Everett Station
- 2 Pedestrian Bridge
- 3 Cedar Street Campus Redevelopment
- 4 Everett Link Extension
- 5 Everett Station, Part 2



1 Everett Station

Tom Hingson, Director of Everett Transit, will discuss the history of Everett Station, transit integration at the transit center, and past attempts by the agency to pursue transit-oriented development.



Photo Credit: Everett Station District Alliance

2 Pedestrian Bridge

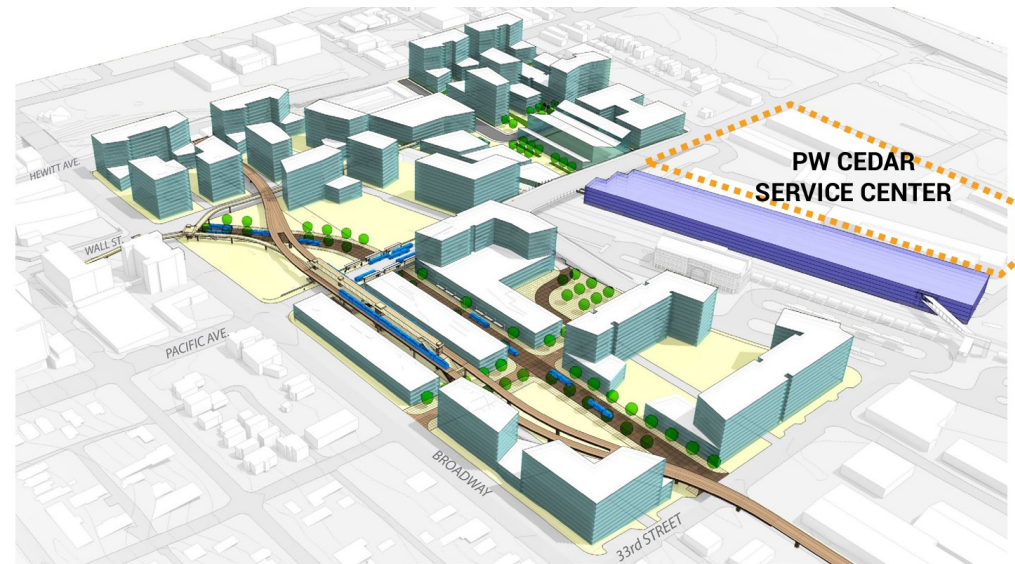
Yorik Stevens-Wadja, the City of Everett's Planning Director, will discuss the Metro Everett Plan and the upcoming update to the Comprehensive Plan from the viewpoint of the pedestrian bridge over the BNSF and Sounder tracks.

Lean more about **Metro Everett Plan**
<https://www.everettwa.gov/1424/Metro-Everett>

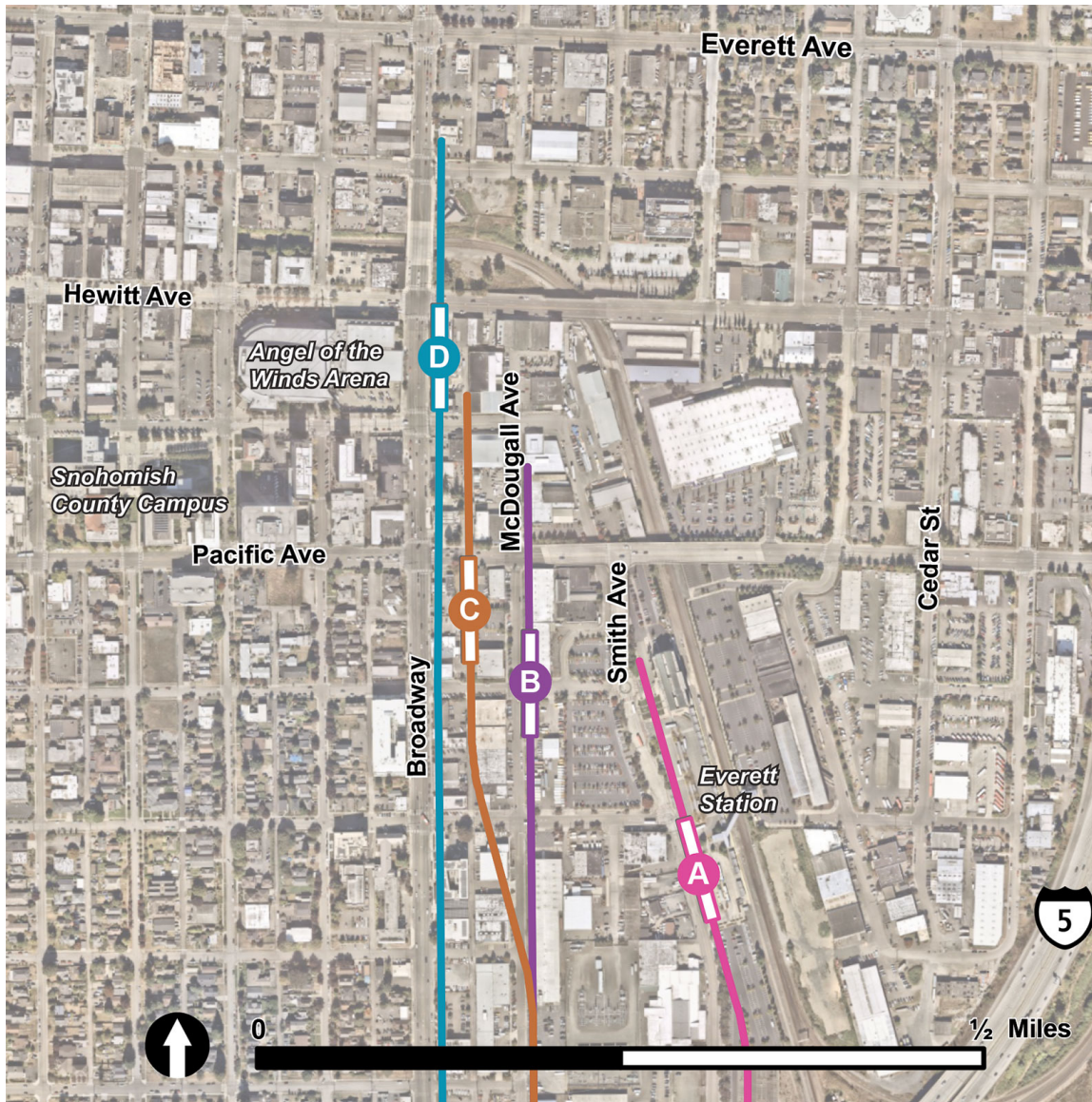


3 Cedar Street Campus Redevelopment

Dan Eernisse, Economic Development Director for the City of Everett, will discuss a vision for the redevelopment of the city's public works and transit operations & maintenance facility along Cedar Street.



Concept image of existing Cedar Street Service Center and TOD potential in the area. Note: The location of the Everett Link station has not been finalized yet. (Image Credit: Makers Architecture & Urban Design)



4 Everett Link Extension

Eric Widstrand of Sound Transit will discuss the agency's early scoping of potential station locations of the Everett Link Extension.

Lean more about Everett Link Extension

<https://www.soundtransit.org/system-expansion/everett-link-extension>



5 Everett Station, Part 2

Brock Howell, Executive Director of the Everett Station District Alliance and the Snohomish County Transportation Coalition, will discuss the 2021 Convergence Study and Convergence Collaborative that are advancing the conversation for developing the neighborhood as an equitable transit-oriented community.

Lean more about 2021 Convergence Study

<https://www.everettstationdistrict.com/convergence-study>



Potential Link station locations in Everett (Image Credit: Sound Transit)