



WSDOT Consolidated Grant Application
November 16th, 2022
Staci Sahoo, Director of Mobility Management

hopelink
Mobility

MM in King County Scope

1. Mobility Education & Outreach
2. Mobility Coalitions
3. Innovative Coordinated Projects
4. Transportation Needs Assessment & Advocacy



PSRC Regional Priority Ranking Criteria



Preservation

3 High-Prioritized Strategies

Designated Mobility Management program for King County

Eligible for Federal (>20% match)

Sample Recent Projects

COVID Vaccine
Mobility Task Force
/ Helpline

Snoqualmie Valley
5-Year Coordinated
Transportation Plan

Volunteer Driver
Recruitment
Campaign

Immigrant &
Refugee Transport
Needs Assessment

Looking Ahead



COMMUNITY
TRANSPORTATION
NAVIGATORS

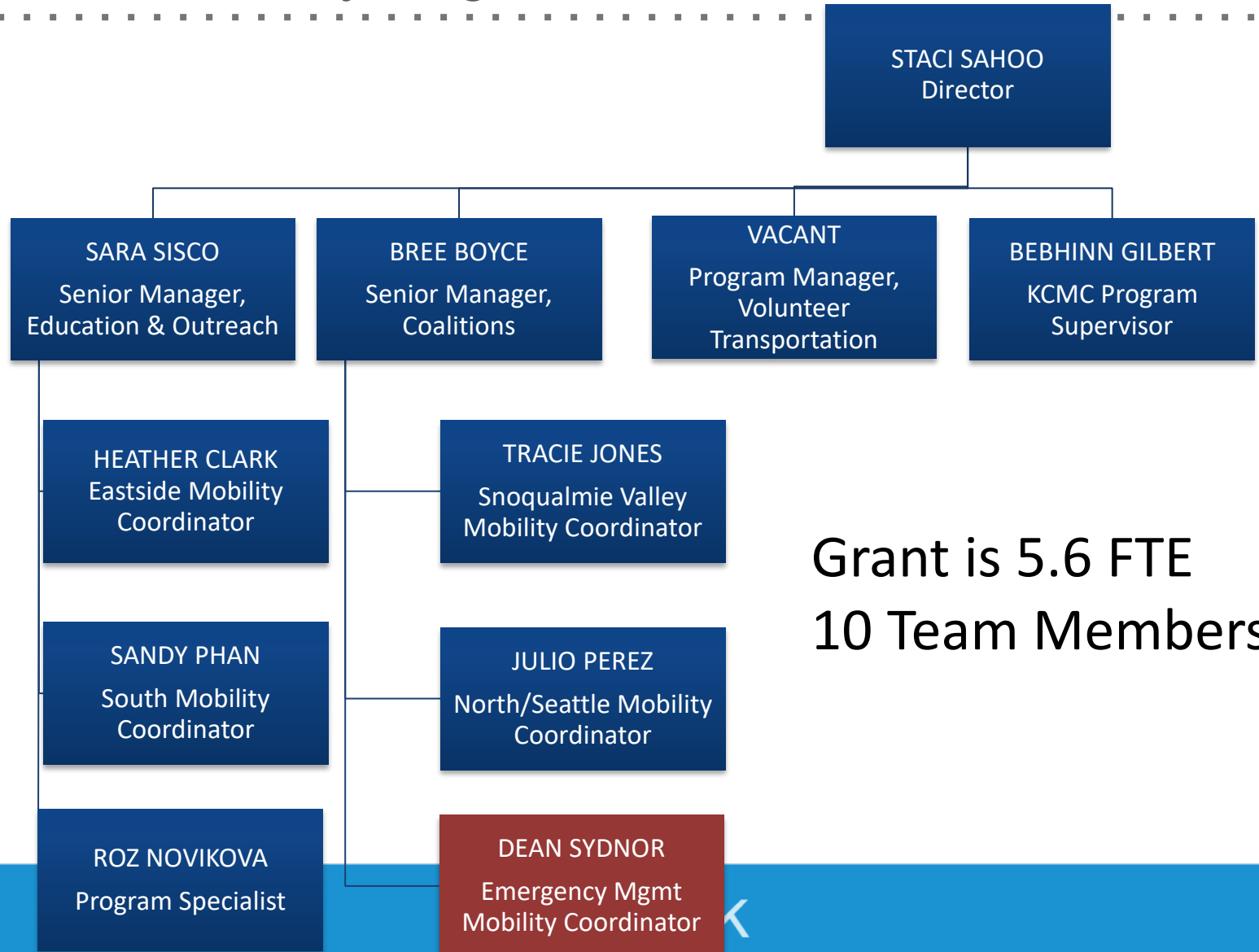


KCMC
ACTION PLAN



POST-PANDEMIC
RECOVERY

Hopelink Mobility Organization Chart



Grant Support

Match

- Hopelink
- King County Metro
- Sound Transit
- Aging & Disability Services
- King County Housing Authority
- Seattle DOT
- Bellevue College
- City of Bellevue

Support

- 44 Letters of Support
- Over 150 unduplicated organizations across team

Thank you!

Questions?

Staci Sahoo (Haber)

Director, Mobility Management

SSahoo@hopelink.org

(425) 625-6856

www.hopelink.org

www.kcmobility.org

