

PSRC Equity Work Program







Puget Sound Regional Council



Regional Equity Strategy

The Strategy includes a suite of resources co-created with the Equity Advisory Committee. It will provide guidance to help members and staff work towards the region's equity goals.

 Capacity Building	 Data and Research	 Community Engagement	 Best Practices
<ul style="list-style-type: none">▶ Learning Opportunities▶ Prioritizing Equity▶ Inclusive Procurement▶ Hiring and Retention	<ul style="list-style-type: none">▶ Equity Tracker▶ Data and Analysis▶ Legacy of Structural Racism Interactive Report	<ul style="list-style-type: none">▶ Equity Advisory Committee▶ Anti-Displacement Organizations▶ Equitable Engagement Guidance	<ul style="list-style-type: none">▶ Racial Equity Impact Assessment▶ Equity Planning Resources▶ PSRC Funding Criteria/Programs

The region's vision for 2050 is to provide exceptional quality of life, opportunity for all, connected communities, a spectacular natural environment, and an innovative, thriving economy. This cannot be achieved without dismantling systems of racial inequity.

"One-size-fits-all" strategies are rarely successful. Rather than seeking to establish policies and practices where everyone is treated the same, PSRC is establishing universal goals while considering how different groups have faced, and continue to face, different barriers. PSRC recognizes that other groups of people are still marginalized based on race, gender, sexual orientation and gender expression, ability, age, and other factors. Focusing on racial equity provides the opportunity to address the unique circumstances of various groups and recognizes the interconnected ways in which marginalization takes place.

PSRC is working with its Equity Advisory Committee (EAC) to develop a Regional Equity Strategy. The strategy will implement the policies in VISION 2050 that work towards equitable outcomes for all and will serve as a guide for coordinated planning within the region. It will introduce a framework, tools, and resources that can be applied to other marginalized communities.

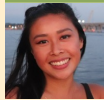
The work plan was finalized in March 2021. The strategy is currently under development, with initial components expected by summer of 2023. Work to refine and implement the strategy will be ongoing.



Equity Advisory Committee

- ▶ Reports to PSRC Executive Board
- ▶ Center equity in PSRC work
- ▶ Involve stakeholders early and often
- ▶ Co-create Regional Equity Strategy

KING COUNTY



Annie Tran



Ben Sung Henry



Debbie Lacy



Hien "Elly" Trinh



Julia Jannon-Shields



Lalita Uppala



Lisa Espinosa



Megan Espinoza



Thanh Nguyen



Jewel Shepherd-Sampson

PIERCE COUNTY



Shannon Turner



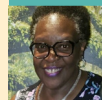
Brendan Nelson



Dionne Bonner



Julius Moss

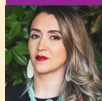


Laurenne Sayles

SNOHOMISH COUNTY



Atrina Martindale



Lupe Valtierra-Prieto



Michelle Stewart



Mindy Woods

Funding provided in part by member jurisdictions, grants from the U.S. Department of Transportation, Federal Transit Administration, Federal Highway Administration and Washington State Department of Transportation.

Language Assistance

العربية (Arabic), 中文 (Chinese), Deutsch (German), Français (French), 한국 (Korean), Русский (Russian), Español (Spanish), Tagalog, Tiếng Việt (Vietnamese)

For language assistance, visit <https://www.psrc.org/contact-center/language-assistance>



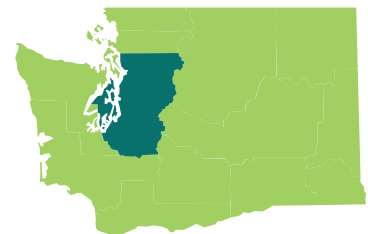
For more information about the PSRC Equity Work Program, contact:

Charles Patton, Ph.D.

Program Manager | Equity Policy and Initiatives

cpatton@psrc.org

206-971-3285



The Puget Sound Regional Council is the regional planning organization for King, Pierce, Snohomish and Kitsap counties in Washington state.

