

# Stormwater Parks and Guidance on Integrating Stormwater Solutions into Comprehensive Plans

Regional Staff Committee  
May 18, 2023

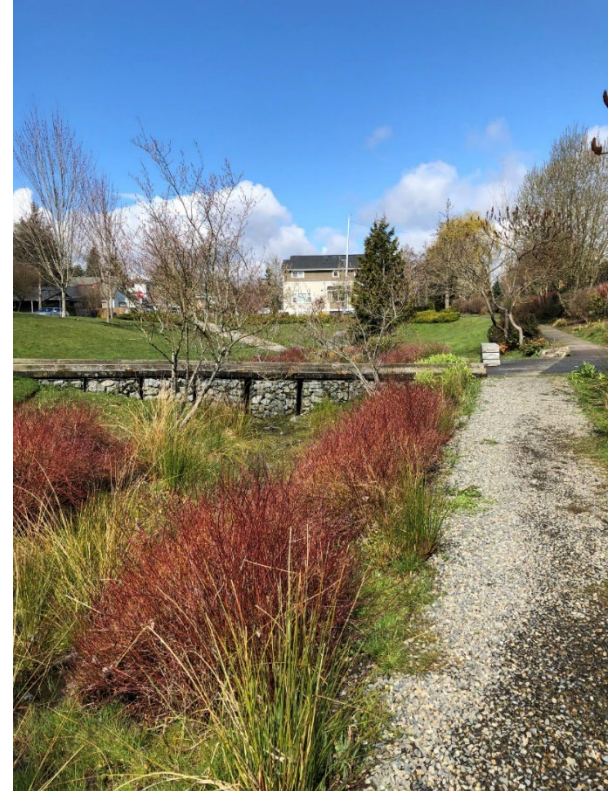




# Stormwater Parks

Stormwater parks can have multiple benefits:

- Provide recreation
- Treat, store, and infiltrate stormwater from hundreds of acres
- Address equity when built areas underserved by parks
- Support Tribal treaty rights
- Add natural features and wildlife habitat to an already built park
- Be funded by multiple sources





# Stormwater Parks Project

Puget Sound National Estuary Program Grant to promote stormwater parks

- Share lessons from already-built stormwater parks: <https://www.psrc.org/our-work/stormwater-parks>
- Identify opportunities for new stormwater parks regionwide and provide technical assistance for planning 6 stormwater parks
- Develop a guidance document on planning for stormwater parks





# City of Arlington

## Stormwater Wetland Park

- Constructed wetlands providing stormwater treatment and flow/flood control and wastewater treatment
- Recreation: Trails, water access, wildlife viewing, dog park
- Facility size: 21-acre park with a 9-acre wetland
- Drainage basin area: 280 acres (Old Town Arlington)





# Kitsap County



## Manchester Stormwater Park

- Small park with natural and engineered stormwater infrastructure that provides treatment and flood control
- Recreation: community gathering space/lawn, walking paths
- Facility size: 0.5 acres
- Drainage basin area: 100 acres





# City of Poulsbo/Quadrant Homes

## Mountain Aire Stormwater Pond and Trails

- Stormwater pond that provides flow control and treatment
- Recreation: trails, benches, wildlife viewing
- Facility size: 2 acres
- Drainage basin area: 39 acres





# City of Seattle

## Madison Valley Stormwater Improvements

- Two park sites that provide flow/flood control, part of combined sewer system
- Recreation: trails, gathering spaces, play areas
- Facility size: 0.84 acre





# City of Shoreline

## Cromwell Park

- Constructed wetland added to an existing park during major renovation, provides treatment and flow/flood control
- Recreation: trails, wildlife viewing
- Facility size: 1.33 acres in a 9-acre park
- Drainage basin area: 109 acres





# City of Portland

## Tanner Springs Park

- Constructed wetland, cistern, and bioswales provide treatment
- Recreation: paths, art, waterscapes
- Facility size: .92 park
- Drainage basin area: 109 acres

Photo: GreenWork PC





# Lessons Learned

- Can achieve **multiple benefits** when well sited and designed
- Find opportunities through working with **other departments and partners**
- Early **public engagement** leads to greater acceptance
- Having a **project champion and political support** is needed
- Consider **maintenance needs** in project design
- Factor **climate change** impacts into design
- **Vary greatly** in size, function, and cost; **many opportunities** to develop stormwater parks throughout the region





# Stormwater Parks Technical Assistance

## Recipients:

- Kirkland
- Kitsap County
- Lynnwood
- Marysville
- Puyallup
- Woodinville





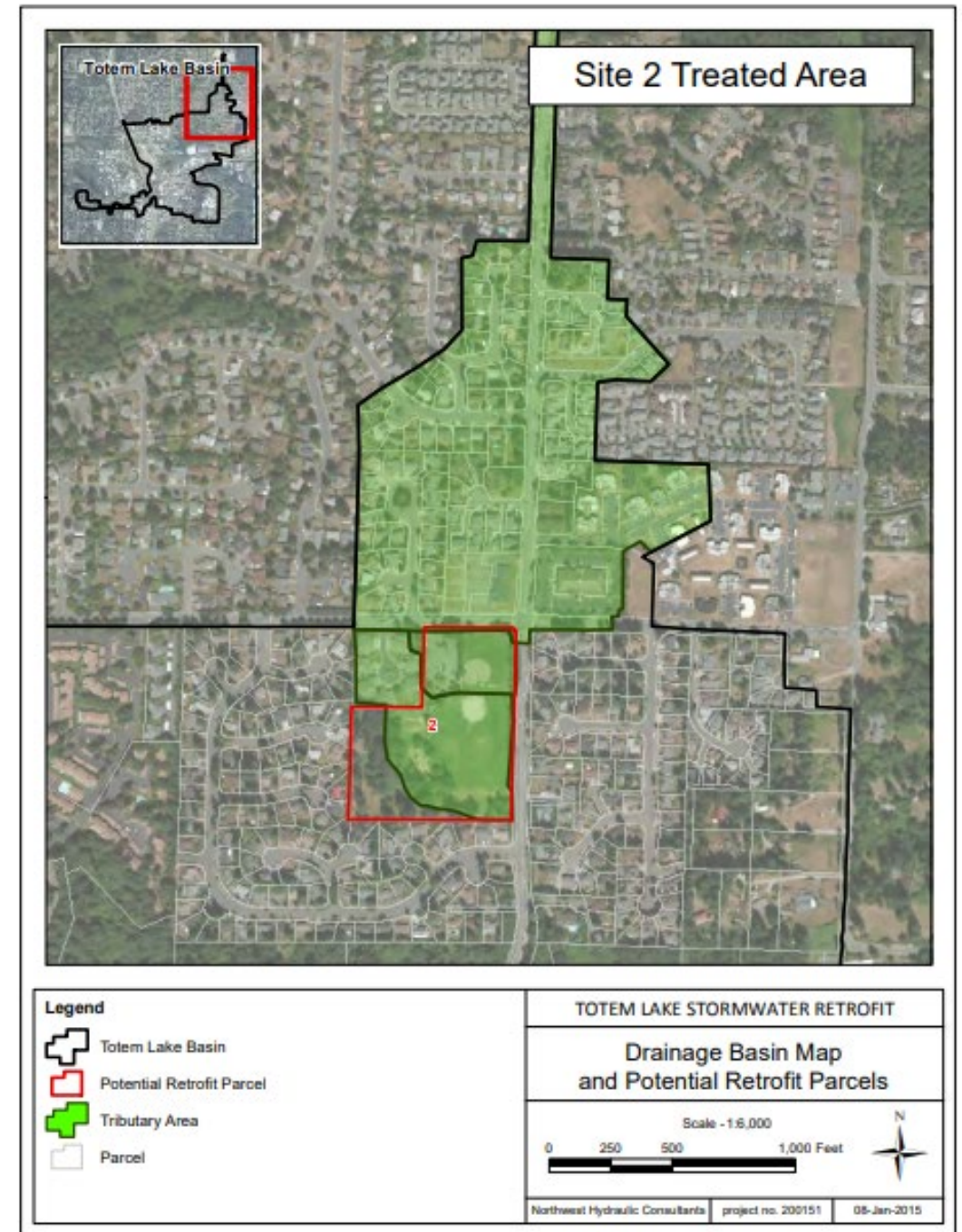
# Kirkland Parks and Stormwater Project

## Goals:

- Stormwater opportunities at each park
- Parks opportunities at each stormwater property

## Steps:

1. Analyze opportunities
2. Review in the field
3. Develop conceptual designs for top projects that are both parks and stormwater priorities
4. Investigate funding

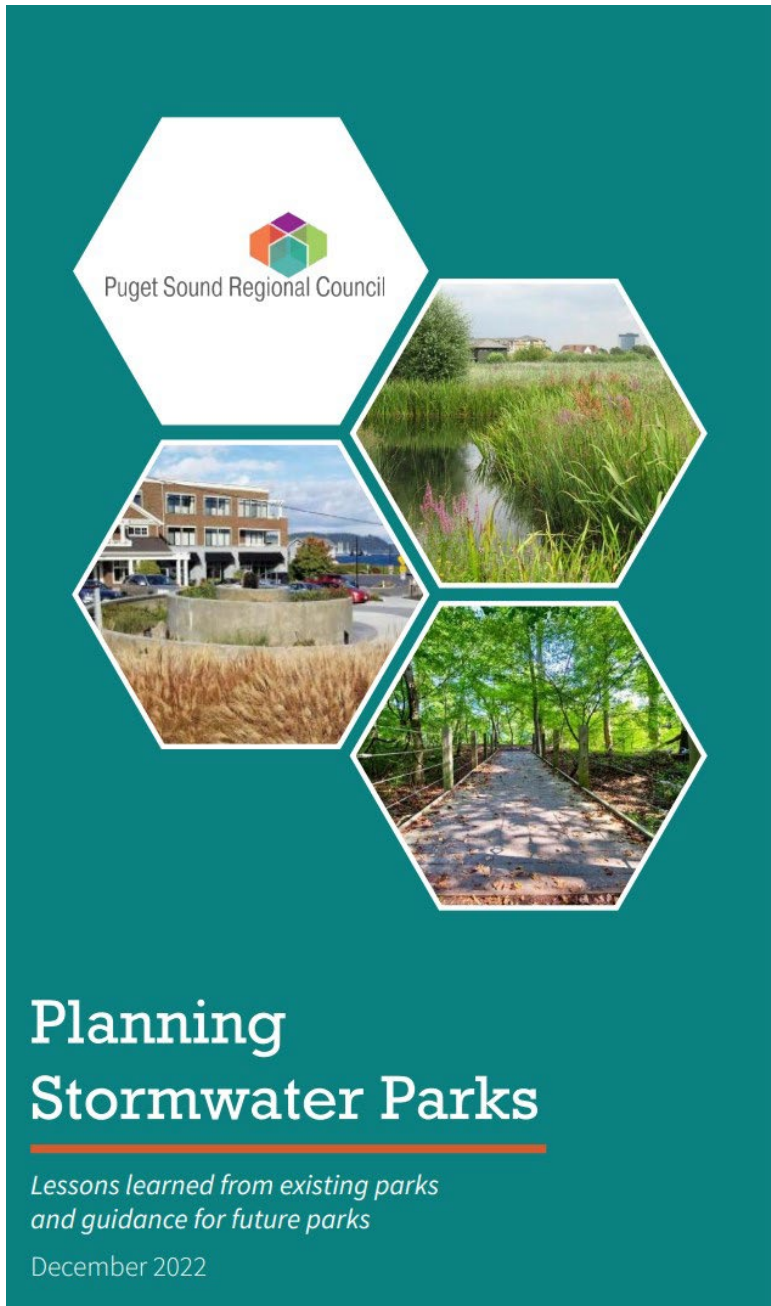




# Planning Stormwater Parks







# Planning Stormwater Parks:

[www.psrc.org/our-work/stormwater-parks](http://www.psrc.org/our-work/stormwater-parks)

Erika Harris, AICP,  
eharris@psrc.org





# Integrating Stormwater Solutions into Comprehensive Plans



- Growth Management Act land use requirement: review stormwater runoff, provide corrective actions
- Related: critical areas, shoreline management
- NPDES stormwater requirements
- Focus on effective solutions that are not required
- By plan element
- Capital facilities plan





# Process



1. Interdisciplinary team(s) and gap analysis
2. Education
3. Draft policies and provisions
4. Commerce, PSRC, and public review
5. Development regulations
6. Finalize and adopt
7. Implementation with interdisciplinary team(s)





# Stormwater Solutions



- Model policies
- Project and plan examples
- Resources
- Example performance indicators





# Land Use



- Requirements
- Regional stormwater facilities
- Incentivizing low-impact development/green stormwater infrastructure in development
- Watershed-based land use planning
- Transfer of development rights (TDR)/Landscape Conservation and Local Infrastructure Program (LCLIP)
- Open space corridors





# Natural Environment



- Integrate salmon recovery planning
- Enhancing tree canopy cover
- Stewardship
- Reducing use of toxic products





# Parks and Recreation



- Stormwater parks and low-impact development in parks
- Park access and funding
- Environmental education in parks





# Transportation

- Transportation stormwater retrofits
- Road retrofits for fish passage and other habitat improvements





# Utilities



- Stormwater planning
- Incentivizing rain gardens and low impact development BMPs
- Water reuse
- Stormwater Public-Private Partnerships
- Maintenance





# Discussion Questions



## Questions:

- Is addressing stormwater impacts and water quality a key issue for your jurisdiction's comprehensive plan update?
- Are there additional topics and information that should be included in the guidance?





# Next Steps



- Send comments to [eharris@psrc.org](mailto:eharris@psrc.org) by May 22
- Update, format, and finalize
- Final guidance available in June on [www.psrc.org/our-work/puget-sound-recovery](http://www.psrc.org/our-work/puget-sound-recovery)



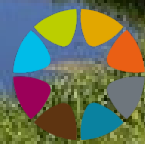


# Thank You!

Erika Harris, AICP  
[eharris@psrc.org](mailto:eharris@psrc.org)



Puget Sound Regional Council



Washington State  
Department of  
**Commerce**