

Project Selection Process

Equity Pilot Co-creation

Equity Advisory Committee

September 7, 2023



We are leaders in the region to realize equity for all. Diversity, racial equity and inclusion are integrated into how we carry out all our work.

psrc.org/equity



The region's vision for equity...

All people have the means to attain the resources and opportunities that improve their quality of life and enable them to reach full potential. Differences in life outcomes cannot be predicted by race, class, or any other identity. Communities of color, historically marginalized communities, and those affected by poverty are engaged in decision-making processes, planning, and policy-making.



Agenda

1. Brief overview of the Equity Pilot Framework
2. Schedule since last meeting
3. Review revisions co-created with EAC subgroup
4. Q&A



Questions for the Equity Advisory Committee

- Does the design of the Pilot reflect your recommendations?
- Are these the correct point values?
- For the pilot, Equity will serve as its own distinct criterion, as well as be woven throughout all of the criteria. What is the value of this exercise? What are we hoping to achieve?
- What does success look like? How can we measure success?



Steps in the Project Selection Process

Step 1: Agency Planning

Cities, counties, ports, transit agencies, state agencies, tribal governments

- develop projects as part of a comprehensive planning process

Step 2: Projects Submitted to PSRC

Projects meeting eligibilities for the **federal funding programs** -- and consistent with PSRC's policies and criteria -- are submitted into the competition

- Wide variety of project types -- roadway, signals, freight, transit, bike/ped, alternative fuels, etc.

Step 3: PSRC's Competition

PSRC staff score projects based on the adopted criteria: supporting centers, mobility, accessibility, safety, equity, project readiness

- PSRC funds matched with local, other funds; projects must be able to use the federal funds within the specified time period

PSRC Boards approval all projects recommended for funding



Brief Review: Project Selection & Pilot

- Project Selection:
 - PSRC conducts regional and countywide competitions for federal funding for transportation projects
 - Projects must first come from a local planning process
 - 2022 strengthened equity and safety criteria
 - Mixed quality of responses to date, understanding of the connection between equity and transportation
 - Lack of understanding /experience with community outreach and engagement as it relates to projects



Brief Review: Project Selection & Pilot

- GOAL of the Equity Pilot:
 - Develop innovative ways to improve equity in PSRC's project selection process (e.g., questions and evaluation process)
 - PSRC process provides feedback loop into future planning, improving how transportation projects meet the needs of marginalized communities
 - Laying out expectations for future project submittals



Development Schedule

July 26 – Pilot development: overview meeting, review outline of proposed approach

August 10 – Pilot development: review initial draft updates, dual pathway structure

August 28 – Pilot development: review final draft updates, final dual pathway structure



Equity Pilot Framework

From EAC feedback, January – May 2023
Testing out two approaches for the pilot

1. Updating existing structure (Pathway 1)

- Update criteria
- Update guidance
- Increase equity criterion point values

2. Equity woven throughout all criteria (Pathway 2)

- Same criteria updates
- Same guidance updates
- Equity incorporated throughout



Equity Pilot Framework: Point Allocation

From EAC feedback, January – May 2023
Testing out two approaches for the pilot

CRITERIA	Point Values - Current	Point Values - Proposed Pathway 1	Point Values - Proposed Pathway 2
Development of Centers (adopted Policy Focus for PSRC funds)	30	24	25
Circulation, Mobility and Accessibility	27	21	28
Equity (Pathway 2 - Outreach and Displacement)	10	20	12
Safety	8	10	10
Air Quality / Climate Change	20	20	20
Project Readiness / Financial Plan	5	5	5
TOTAL	100	100	100



Equity Pilot Framework – Pathway 1

1. Updating existing structure

- Update criteria and guidance – Circulation, mobility & accessibility:
 - Address transit improvements for all services and times of day, not just commuter lines and periods
 - Is there a way to incorporate **resilience of the system** into the criterion?
 - Emphasize access to **opportunities and destinations**
 - Connect to existing PSRC resources such as the new **Housing Opportunities by Place (HOP)** typology



Equity Pilot Framework – Pathway 1

- Update criteria and guidance – Equity:
 - Assist sponsors in identifying the most marginalized communities impacted / improved by the project
 - Start with PSRC's 6 **equity focus population areas (EFAs)**, support identification and understanding of data
 - Incorporate the **intersection of two or more EFAs** in the project area (e.g., in an area of higher percentages of both people of color and people with low incomes)
 - Include other datasets on disparities – e.g., WA Environmental Health Disparities map, Coordinated Mobility Plan
 - Improve assessment of addressing impacts and providing benefits
 - **Provide best practices and examples**



Equity Focus Areas

Based on foundational work in

VISION 2050 & the Regional Transportation Plan (RTP)

Six demographics used to measure and track disparities

People of
Color

People with
Low Incomes

People with
Disabilities

Youth
(Ages 5-17)

Older Adults
(Age 65+)

People with
limited English
proficiency
(LEP)

Equity Focus Areas (EFAs)

have higher proportions of members of these groups



Equity Focus Areas

EQUITY FOCUS AREAS categorize places into three groups:

Above 50%

Above the Regional Average

Not above 50% or the Regional Average

People of Color

People with Low Incomes

People with Disabilities

Youth (Ages 5-17)

Older Adults (Age 65+)

People with LEP (Limited English Proficiency)

Example of Equity Focus Areas (People of Color)

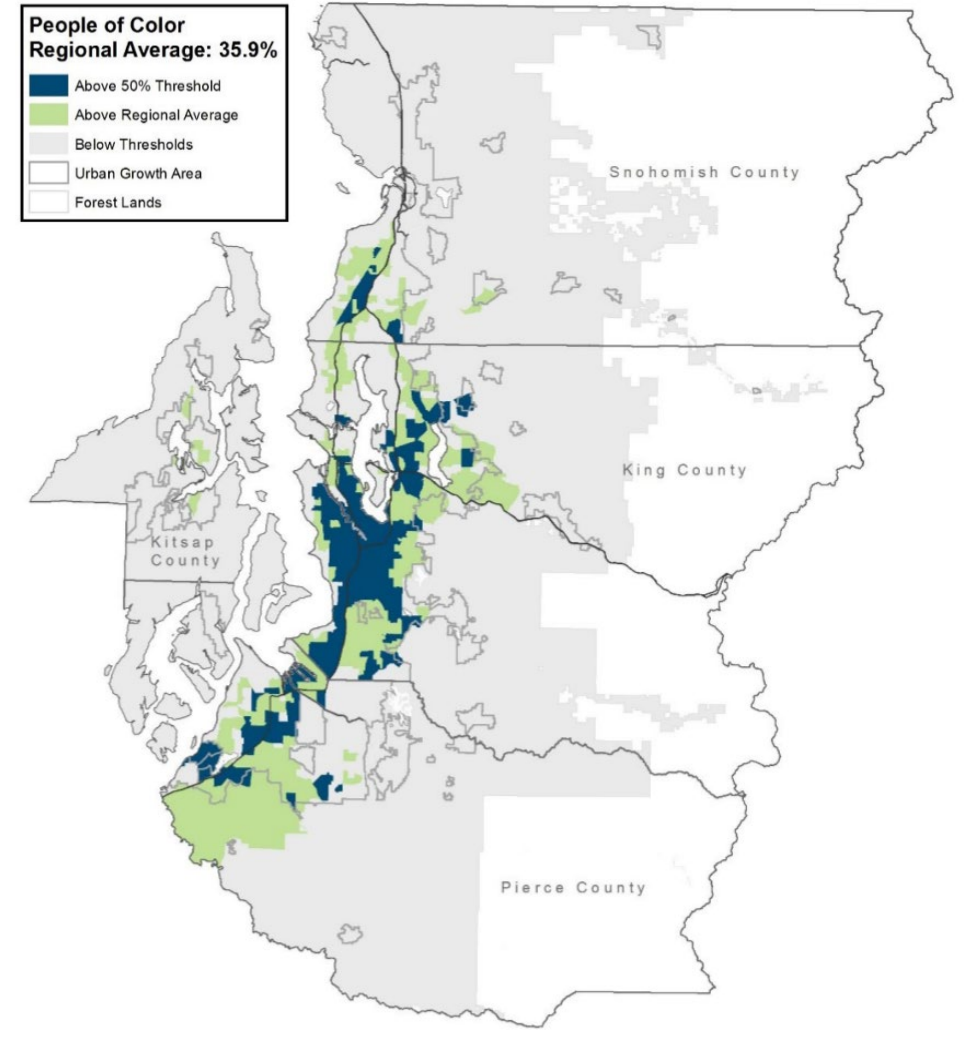


Image: PSRC Draft Regional Transportation Plan (1/13/2022);
Figure 1, [Appendix F](#), page 13

Equity Pilot Framework – Pathway 1

- Update criteria and guidance – Equity:
 - Address under Community Outreach and Engagement:
 - Provide best practices and examples, setting expectations
 - Compensation, language, partnership practices included in the project / agency outreach to the extent feasible
 - Include the variety of outreach strategies that could / should be conducted
 - Increase point values for this subsection



Equity Pilot Framework – Pathway 1

- Update criteria and guidance – Equity:
 - Address the quality of Displacement policies
 - Connect to **Housing Opportunities by Place (HOP)** resources
 - Provide improved guidance and examples



Equity Pilot Framework – Pathway 2

1. Equity woven throughout all criteria

- Include the same criteria and guidance updates
- Identify equity populations **upfront, before all criteria**
- Include **addressing impacts / benefits to EFA** populations **within all applicable criteria**
- Equity criterion becomes Community Outreach and Displacement
 - Identification and impacts questions now throughout all criteria



Equity Pilot: Language Revisions

Criteria: Development of Centers

Pathway 1

- *No changes*

Pathway 2

- Describe the **support** for a **diversity of business types and sizes** within the community.
- Describe how the project will **expand access to high, middle and/or living wage jobs** for the **EFAs** identified above.

Equity Pilot: Language Revisions

Criteria: Circulation, Mobility and Accessibility

Pathway 1

- Describe how the project remedies a current or anticipated problem (e.g. congestion ... addressing **redundancies** in the system, and/or improving individual **resilience** and **adaptability** to changes or issues with the transportation system).

Pathway 2

- Language same as Pathway 1
- **Identify the existing disparities ... for the equity populations identified above that need to be addressed. Describe how the project is addressing those disparities ... to these equity populations by improving their mobility.**

Equity Pilot: Language Revisions

Criteria: Equity, Section 1

Pathway 1

- Further **identify the most impacted or marginalized populations** within the project area. For example, areas with a higher percentage of both people of color and people with low incomes, and/or other areas of intersectionality across equity populations.

Pathway 2

- Identification of equity populations and most marginalized moved to top of document.

Equity Pilot: Language Revisions

Criteria: Addressing Outreach

Pathway 1

- Describe the public outreach process ... with the equity populations identified in the previous section, including activities reflective of best practices from PSRC's Equitable Engagement Guidance. These include, for example:
 - Compensating community members for their input
 - Effectively addressing language barriers
 - Partnering and co-creating with community-based organizations

Pathway 2

- Language same as Pathway 1

Example Response: High Score

Criteria: Addressing Outreach

- “The outreach process included creating an **ad hoc committee comprised of people with disabilities (i.e., the EFA for this project)** that met several times to **identify project needs and goals, review improvement options, and select recommended improvements.** The agency engaged in meaningful conversations with the committee to better understand their needs and **center the project on issues they shared with staff. Committee members were compensated** for their time and expertise.
- Committee members cited a **need for sidewalks, traffic calming, and a street design** that would keep residents **safe from vehicle traffic.** They were particularly interested in sidewalks and street designs that would address access and safety issues for people with disabilities who currently wait for the bus along the edge of the road.”

Equity Pilot: Language Revisions

Criteria: Addressing Displacement

Pathway 1

- ~~• Is the project in an area of low, medium, or high displacement risk?~~
- Using PSRC's **Housing Opportunities by Place (HOP)** tool, identify the typology associated with the location of the project and **identify the strategies the jurisdiction uses to reduce the risk of displacement** that are **aligned** with those listed for the **typology**.

Pathway 2

- Language same as Pathway 1

Example Response: High Score

Criteria: Addressing Displacement

- “The project **serves areas of high displacement risk / lower opportunity**, which falls under the “**Improve Access and Affordability**” typology. The Comprehensive Plan **includes strategies that align with this typology** and reflect the jurisdiction’s commitment to reduce the risk of displacement. Examples of these strategies include: **no minimum parking requirements, incentive / inclusionary zoning, and relocation assistance.** **Attachment A** includes language from the comprehensive plan that provides additional details on these strategies.”

Equity Pilot: Language Revisions

Criteria: Safety and Security

Pathway 1

- No changes

Pathway 2

- Specific to the **equity populations identified above, describe how the project will improve safety and/or address safety issues currently being experienced by these communities.**

Equity Pilot: Language Revisions

Criteria: Air Quality and Climate Change

Pathway 1

- Is the project located in an area identified as a **7 of 10** for **diesel pollution and disproportionate impacts** in the Washington Environmental Health Disparities map?

Pathway 2

- Language same as Pathway 1

Proposed Logistics

- \$6.1 million available
- Proposed logistics for competition:
 - Every project responds to **both pathways**
 - **One project per agency** to be submitted
 - Full regional competition, but projects may support regional or local centers
 - **Cap funding** request at **\$1,000,000**
 - Will allow for a diversity of project types and sizes



Development Schedule

July 26 – Pilot development: overview meeting, review outline of proposed approach

August 10 – Pilot development: review initial draft updates, dual pathway structure

August 28 – Pilot development: review final draft updates, final dual pathway structure

September 7 – Pilot development: review final pilot materials with EAC

Mid-September – Launch pilot

November 2 – Review Pilot project recommendations with EAC

November–December – EAC discusses broader recommendations on process



Questions for the Equity Advisory Committee

- Does the design of the Pilot reflect your recommendations?
- Are these the correct point values?
- For the pilot, Equity will serve as its own distinct criterion, as well as be woven throughout all of the criteria. What is the value of this exercise? What are we hoping to achieve?
- What does success look like? How can we measure success?



Thank You

Kelly McGourty
Director of Transportation Planning
kmcgourty@psrc.org

Charles Patton
Program Manager, Equity Policy & Initiatives
cpatton@psrc.org

