

Project Selection Process

Equity Pilot Co-creation

Regional Project Evaluation Committee
September 22, 2023



We are leaders in the region to realize equity for all. Diversity, racial equity and inclusion are integrated into how we carry out all our work.

psrc.org/equity

Agenda

1. Brief overview of the Equity Advisory Committee (EAC)
2. 2023 schedule
3. Pilot framework co-created with EAC
4. Q&A



Brief Review: Project Selection & Pilot

- Project Selection:
 - PSRC conducts regional and countywide competitions for federal funding for transportation projects
 - Projects must first come from a local planning process
 - 2022 strengthened equity and safety criteria



Brief Review: Project Selection & Pilot

- GOAL of the Equity Pilot:
 - Develop innovative ways to improve equity in PSRC's project selection process (e.g., questions and evaluation process)
 - PSRC process provides feedback loop into future planning, improving how transportation projects meet the needs of marginalized communities
 - Laying out expectations for future project submittals



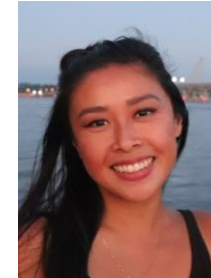
Community Engagement

Equity Advisory Committee

- Center equity in PSRC work
- Involve stakeholders early and often
- Co-create Regional Equity Strategy



Ben Sung Henry



Annie Tran



Debbie Lacy



Hien "Elly" Trinh



Lalita Uppala



Lisa Espinosa



Megan Espinoza



Autrina Martindale



Jewel Shepherd-Sampson



Shannon Turner



Brendan Nelson



Laurenne Sayles



Julius Moss



Julia Jannon-Shields



Lupe Valtierra-Prieto



Donne Bonner



Thanh Nguyen



Michelle Stewart



Mindy Woods

Regional Representation

Counties

- King: 9 members
- Kitsap: 2 members
- Pierce: 4 members
- Snohomish: 4 members



Transportation Equity Pilot

- New \$6 million set-aside for a Transportation Equity Pilot Program
- Evaluate current project selection process
- Suggested revisions for eligibility, criteria, guidance, etc.
- Co-design Equity Pilot



2023 Equity Pilot Schedule

Phase 1: Understanding



Jan: Project
Selection
Introduction

Feb: Learn from
other MPOs

March: Project
Evaluation
Simulation

Phase 2: Designing



April – May: Pilot
Co-Creation

June – Aug:
Design Pilot with
EAC Subgroup

Sept: Review with
Full EAC & Develop
Call Materials

Phase 3: Implementing



Sept: Release Pilot

Sept – Oct: Conduct
Pilot

Nov: EAC Pilot
Project
Recommendations

Phase 4: Planning Future



Nov – Dec: EAC
Process
Recommendations

Dec: Board Review
of EAC
Recommendations

Jan 2024: Policy
Framework
Adoption

2023 Equity Pilot Schedule

Phase 1:
Understanding



Jan: Project selection introduction

Feb: Learn from other MPOs

March: Project evaluation simulation

Phase 2:
Designing



April – May: Pilot Co-Creation

June – Aug: Design Pilot

Sept: Review with EAC and Develop Call Materials

Phase 3:
Implementing



Sept: Release Pilot

Sept – Oct: Conduct Pilot

Nov: EAC Pilot Project Recommendations

Phase 4:
Planning Future

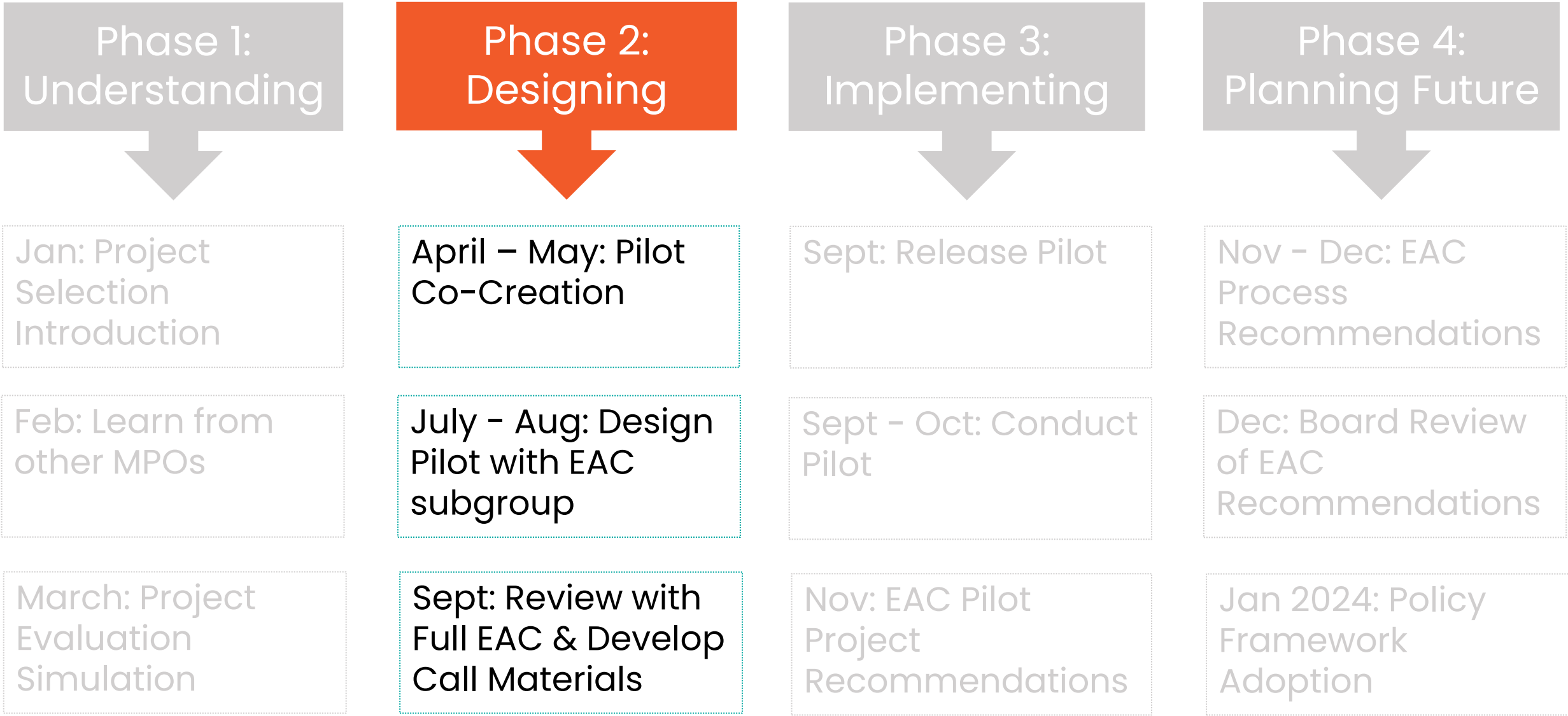


Nov – Dec: EAC Process Recommendations

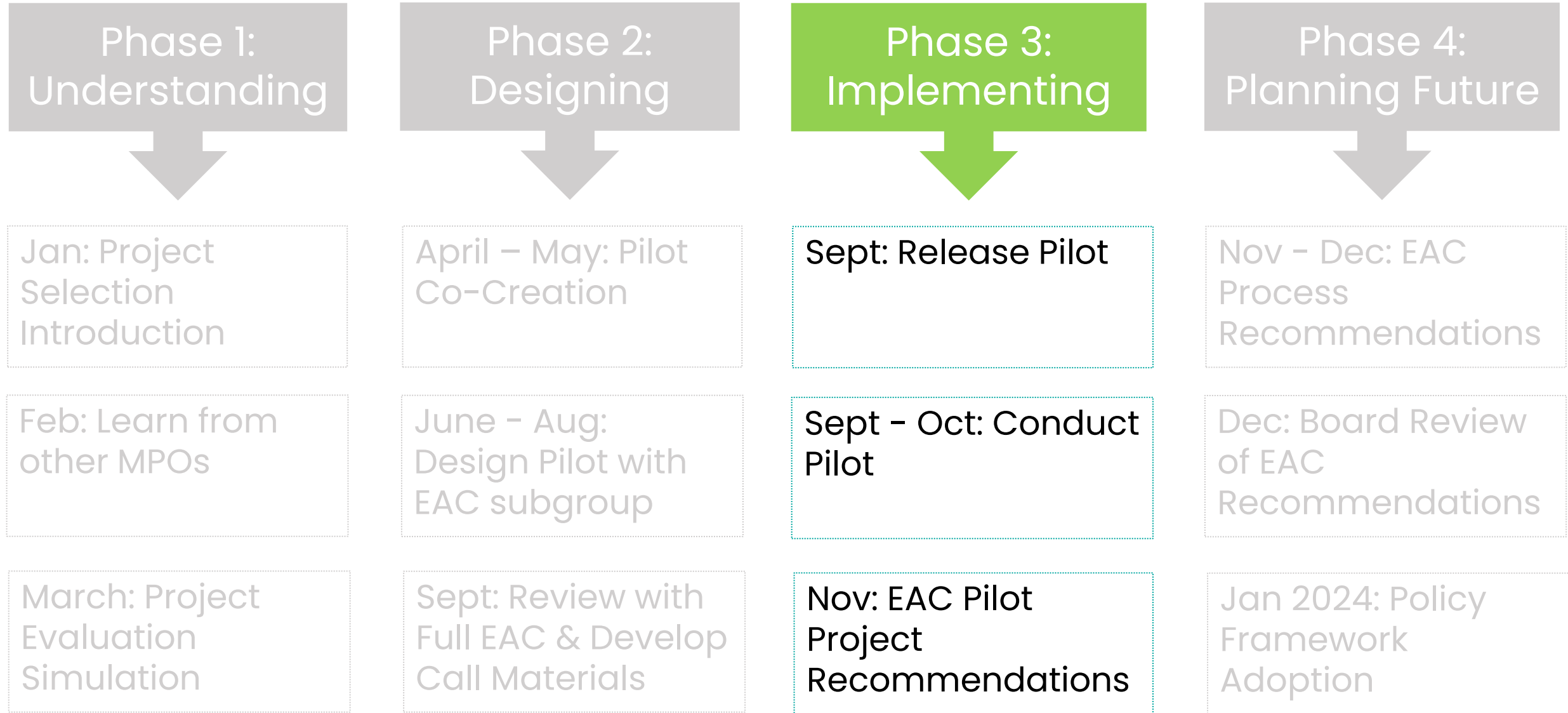
Dec: Board Review of EAC Recommendations

Jan 2024: Policy Framework Adoption

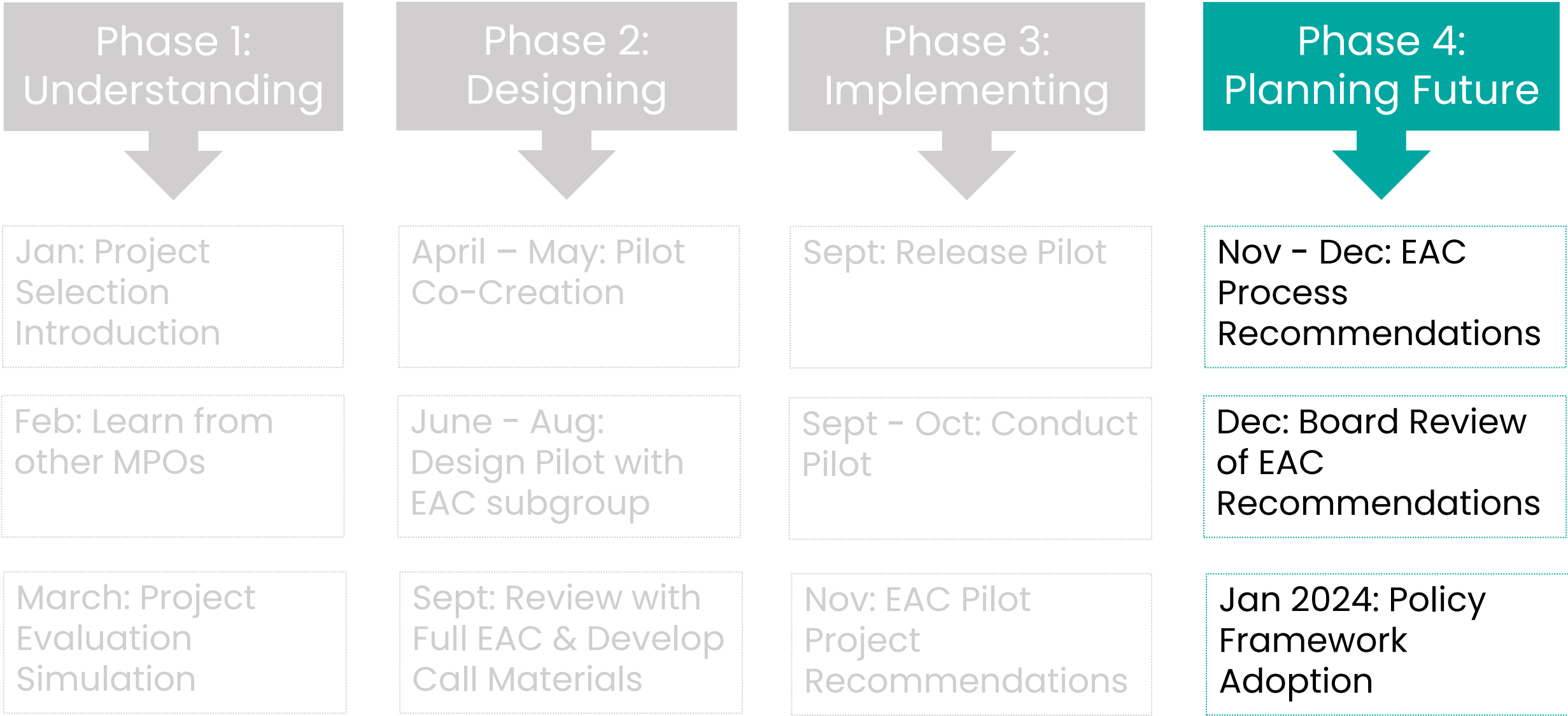
2023 Equity Pilot Schedule



2023 Equity Pilot Schedule



2023 Equity Pilot Schedule



Equity Pilot Framework

From EAC feedback, January – May 2023
Testing out two approaches for the pilot

1. Updating existing structure (Pathway 1)

- Update criteria
- Update guidance
- Increase equity criterion point values

2. Equity woven throughout all criteria (Pathway 2)

- Same criteria updates
- Same guidance updates
- Equity incorporated throughout



Equity Pilot Framework: Point Allocation

From EAC feedback, January – May 2023
Testing out two approaches for the pilot

CRITERIA	Point Values - Current	Point Values - Proposed Pathway 1	Point Values - Proposed Pathway 2
Development of Centers (adopted Policy Focus for PSRC funds)	30	24	25
Circulation, Mobility and Accessibility	27	21	28
Equity (Pathway 2 - Outreach and Displacement)	10	20	12
Safety	8	10	10
Air Quality / Climate Change	20	20	20
Project Readiness / Financial Plan	5	5	5
TOTAL	100	100	100



Equity Pilot Framework – Pathway 1

1. Updating existing structure

- Update criteria and guidance – Circulation, mobility & accessibility:
 - Address transit improvements for **all services and times of day**, not just commuter lines and periods
 - Is there a way to incorporate **resilience of the system** into the criterion?
 - Emphasize access to **opportunities and destinations**
 - Connect to existing PSRC resources such as the new **Housing Opportunities by Place (HOP)** typology



Equity Pilot Framework – Pathway 1

- Update criteria and guidance – Equity:
 - Assist sponsors in identifying the most marginalized communities impacted / improved by the project
 - Start with PSRC's 6 **equity focus population areas (EFAs)**, support identification and understanding of data
 - Incorporate the **intersection of two or more EFAs** in the project area (e.g., in an area of higher percentages of both people of color and people with low incomes)
 - Include other datasets on disparities – e.g., WA Environmental Health Disparities map, Coordinated Mobility Plan
 - Improve assessment of addressing impacts and providing benefits
 - **Provide best practices and examples**



Equity Focus Areas

Based on foundational work in

VISION 2050 & the Regional Transportation Plan (RTP)

Six demographics used to measure and track disparities

**People of
Color**

**People with
Low Incomes**

**People with
Disabilities**

Youth
(Ages 5-17)

Older Adults
(Age 65+)

**People with
limited English
proficiency**
(LEP)

Equity Focus Areas (EFAs)

have higher proportions of members of these groups



Equity Focus Areas

EQUITY FOCUS AREAS categorize places into three groups:

Above 50%

Above the Regional Average

Not above 50% or the Regional Average

People of Color

People with Low Incomes

People with Disabilities

Youth (Ages 5-17)

Older Adults (Age 65+)

People with LEP (Limited English Proficiency)

Example of Equity Focus Areas (People of Color)

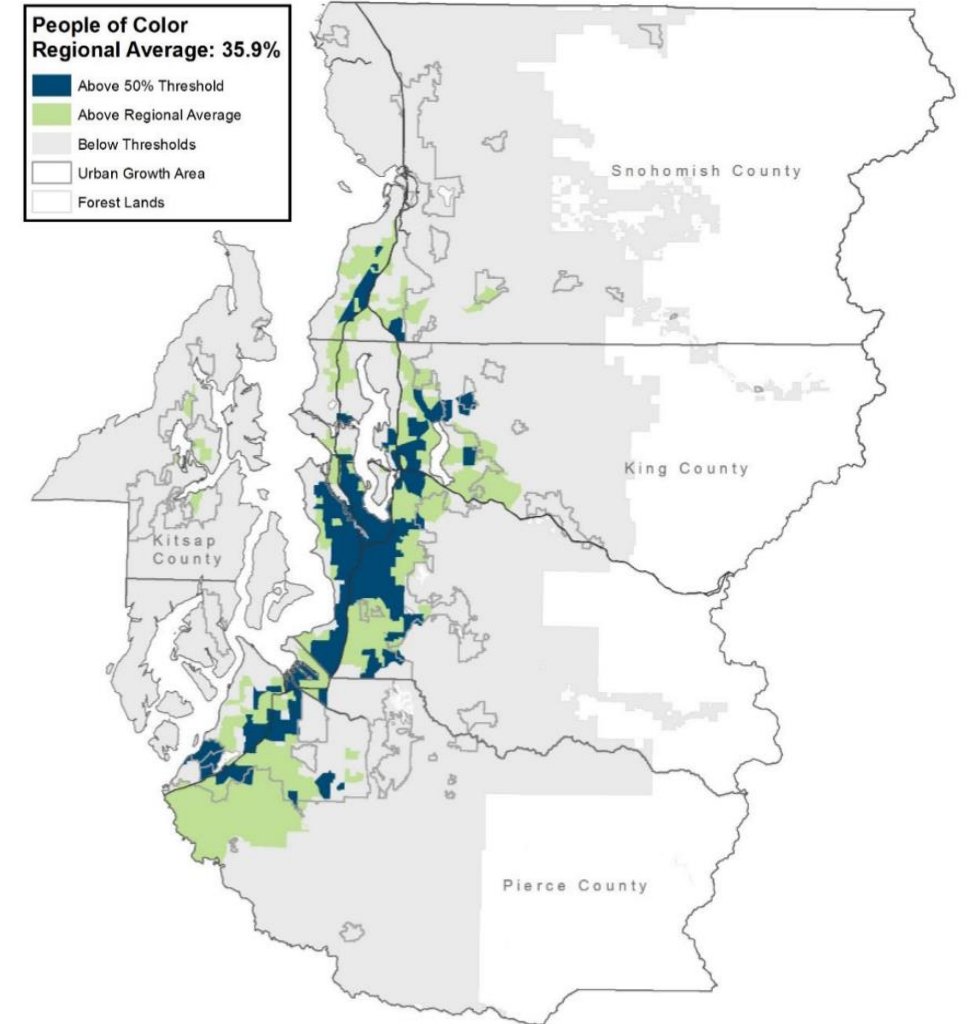


Image: PSRC Draft Regional Transportation Plan (1/13/2022);

Figure 1, [Appendix E](#), page 13

Equity Pilot Framework – Pathway 1

- Update criteria and guidance – Equity:
 - Address under Community Outreach and Engagement:
 - Provide best practices and examples, setting expectations
 - Compensation, language, partnership practices included in the project / agency outreach to the extent feasible
 - Include the variety of outreach strategies that could / should be conducted
 - Increase point values for this subsection



Equity Pilot Framework – Pathway 1

- Update criteria and guidance – Equity:
 - Address the quality of Displacement policies
 - Connect to **Housing Opportunities by Place (HOP)** resources
 - Provide improved guidance and examples



Equity Pilot Framework – Pathway 2

1. Equity woven throughout all criteria

- Include the same criteria and guidance updates
- Identify equity populations **upfront, before all criteria**
- Include **addressing impacts / benefits to EFA** populations **within all applicable criteria**
- Equity criterion becomes Community Outreach and Displacement
 - Identification and impacts questions now throughout all criteria



Equity Pilot: Language Revisions

Criteria: Development of Centers

Pathway 1

- *No changes*

Pathway 2

- Describe the **support** for a **diversity of business types and sizes** within the community.
- Describe how the project will **expand access to high, middle and/or living wage jobs** for the **EFAs** identified above.

Equity Pilot: Language Revisions

Criteria: Circulation, Mobility and Accessibility

Pathway 1

- Describe how the project remedies a current or anticipated problem (e.g. congestion ... addressing **redundancies** in the system, and/or improving individual **resilience** and **adaptability** to changes or issues with the transportation system).

Pathway 2

- Language same as Pathway 1
- **Identify the existing disparities ... for the equity populations identified above that need to be addressed. Describe how the project is addressing those disparities ... to these equity populations by improving their mobility.**

Equity Pilot: Language Revisions

Criteria: Equity, Section 1

Pathway 1

- Further **identify the most impacted or marginalized populations** within the project area. For example, areas with a higher percentage of both people of color and people with low incomes, and/or other areas of intersectionality across equity populations.

Pathway 2

- Identification of equity populations and most marginalized moved to top of document.

Example Response: High Score

Criteria: Addressing Disparities

- “PSRC’s **Equity Focus Area maps** illustrate that the size of the low-income population and communities of color in the proposed project’s area are **above the regional average**. Although residents in these communities disproportionately attend school and work later in the evening, these communities currently **do not have access to high-capacity transit to access educational or employment opportunities during off peak hours**.
- This proposed bus line will **provide service to key educational institutions and employment centers**, it will have frequency and span to serve **off peak hours**, it will be located in areas of **low income and affordable housing** where an individual will be able to walk or bike within 5 minutes to access high-capacity transit service.”

Equity Pilot: Language Revisions

Criteria: Addressing Outreach

Pathway 1

- Describe the public outreach process ... with the equity populations identified in the previous section, including activities reflective of best practices from PSRC's Equitable Engagement Guidance. These include, for example:
 - Compensating community members for their input
 - Effectively addressing language barriers
 - Partnering and co-creating with community-based organizations

Pathway 2

- Language same as Pathway 1

Example Response: High Score

Criteria: Addressing Outreach

- “The outreach process included creating an **ad hoc committee comprised of people with disabilities (i.e., the EFA for this project)** that met several times to **identify project needs and goals, review improvement options, and select recommended improvements.** The agency engaged in meaningful conversations with the committee to better understand their needs and **center the project on issues they shared with staff. Committee members were compensated** for their time and expertise.
- Committee members cited a **need for sidewalks, traffic calming, and a street design** that would keep residents **safe from vehicle traffic.** They were particularly interested in sidewalks and street designs that would address access and safety issues for people with disabilities who currently wait for the bus along the edge of the road.”

Equity Pilot: Language Revisions

Criteria: Addressing Displacement

Pathway 1

- ~~• Is the project in an area of low, medium, or high displacement risk?~~
- Using PSRC's **Housing Opportunities by Place (HOP)** tool, identify the typology associated with the location of the project and **identify the strategies the jurisdiction uses to reduce the risk of displacement** that are **aligned** with those listed for the **typology**.

Pathway 2

- Language same as Pathway 1

Example Response: High Score

Criteria: Addressing Displacement

- “The project **serves areas of high displacement risk / lower opportunity**, which falls under the “**Improve Access and Affordability**” typology. The Comprehensive Plan **includes strategies that align with this typology** and reflect the jurisdiction’s commitment to reduce the risk of displacement. Examples of these strategies include: **no minimum parking requirements, incentive / inclusionary zoning, and relocation assistance.** **Attachment A** includes language from the comprehensive plan that provides additional details on these strategies.”

Equity Pilot: Language Revisions

Criteria: Safety and Security

Pathway 1

- No changes

Pathway 2

- Specific to the equity populations identified above, describe how the project will improve safety and/or address safety issues currently being experienced by these communities.

Equity Pilot: Language Revisions

Criteria: Air Quality and Climate Change

Pathway 1

- Is the project located in an area identified as a **7 of 10** for **diesel pollution and disproportionate impacts** in the Washington Environmental Health Disparities map?

Pathway 2

- Language same as Pathway 1

Proposed Logistics

- \$6.01 million available
- Proposed logistics for competition:
 - Every project responds to **both pathways**
 - **One project per agency** to be submitted
 - Full regional competition, but projects may support regional or local centers
 - **Cap funding** request at **\$1,000,000**
 - Will allow for a diversity of project types and sizes



Development Schedule

Mid-September – Launch pilot

November 2 – Review Pilot project recommendations with EAC

November-December – EAC discusses broader recommendations on process



Thank You

Kelly McGourty
Director of Transportation Planning
kmcgourty@psrc.org

Charles Patton
Program Manager, Equity Policy & Initiatives
cpatton@psrc.org

