


Regional Safety Action Plan Development

Bicycle Pedestrian Advisory Committee
November 14, 2023


Puget Sound Regional Council



We are leaders in the region to realize equity for all. Diversity, racial equity and inclusion are integrated into how we carry out all our work.

psrc.org/equity

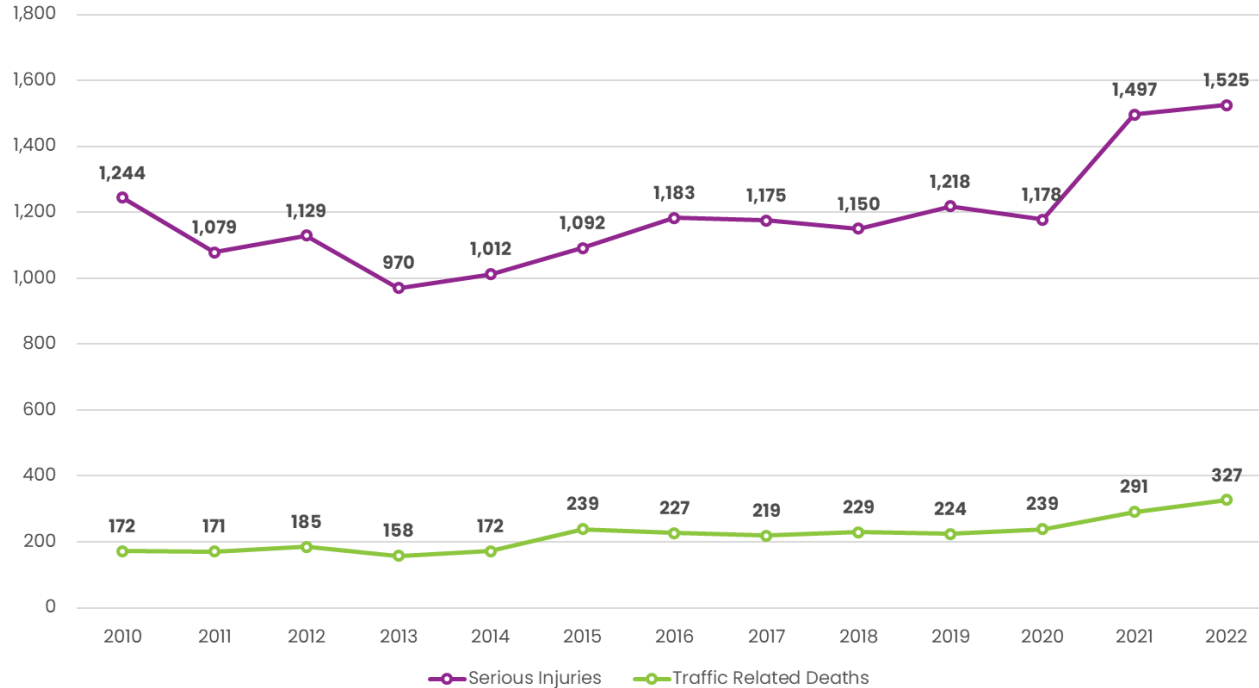
Today's Presentation

- ❑ What is the Challenge we Face?
- ❑ Recap Safety Focus in the Regional Transportation Plan
- ❑ Discuss Guiding Principle – Safe System Approach
- ❑ Review Work To Date
- ❑ Discuss Scope of Work Outline
- ❑ Review Next Steps



Safety Trends – Fatalities & Serious Injuries

Traffic Related Deaths and Serious Injuries in the PSRC Region



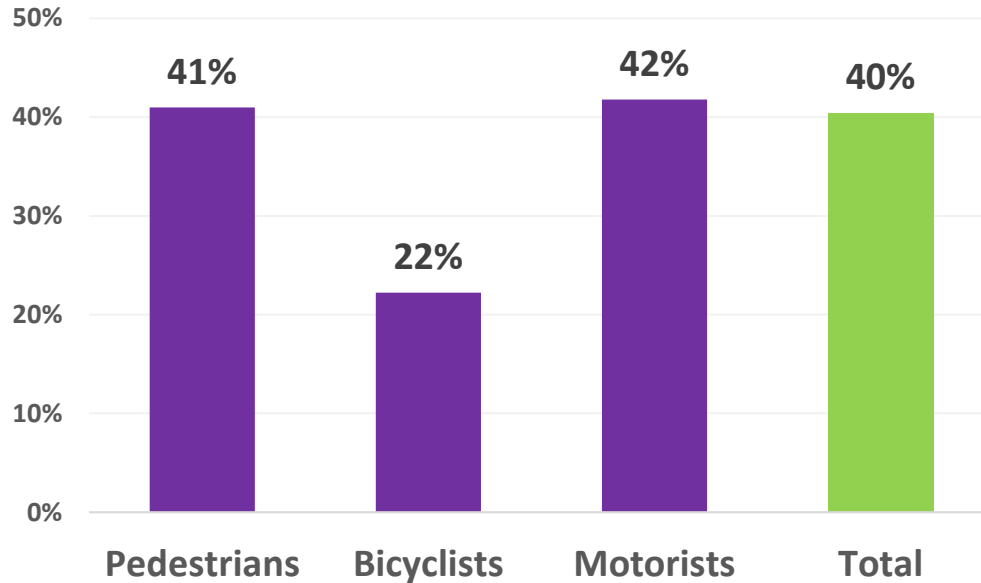
➤ Deaths and Serious Injuries have seen a significant increase in recent years

Fatality Source: Washington Traffic Safety Commission Coded Fatality Files (2022 Preliminary)
Serious Injury Source: Washington State Department of Transportation, Crash Data Division, Multi-Row Data Files



Safety Trends – Fatalities & Serious Injuries

% Increase in Fatalities and Serious Injuries in the PSRC Region by Mode (2012 – 2022)



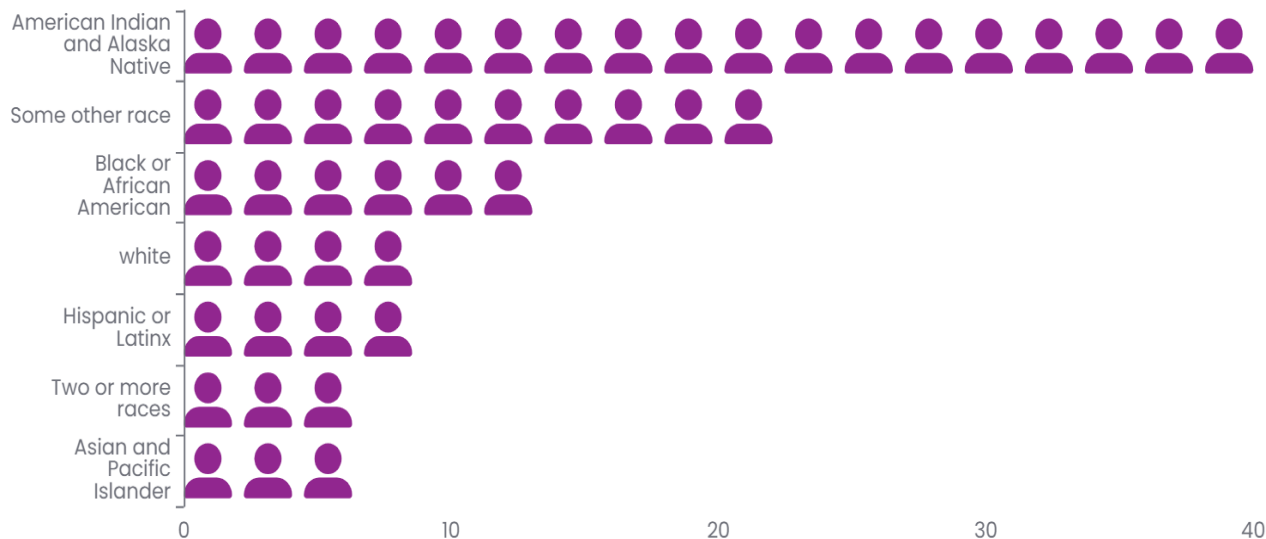
➤ All modes have seen a substantial increase in fatalities and serious injuries over the last 10 years

Source: Washington State Department of Transportation, Crash Data Web Portal (9/12/2023)



Safety Trends – Fatalities & Serious Injuries

Traffic Related Fatality Rates in the PSRC Region by Race/Ethnicity, 2021



➤ Traffic deaths disproportionately impact people of color

Fatal Collision Source: Washington Traffic Safety Commission Coded Fatality Files (2022 Preliminary)

Population Data Source: US Census Bureau American Community Survey (ACS) 5-year data Table B03002



Safety in the Regional Transportation Plan

- Safety is a key policy focus area in the 2022 Regional Transportation Plan (RTP) and is a cross-cutting issue throughout the plan
- The RTP directs PSRC to develop a Regional Safety Action Plan (RSAP), including strategies, actions and performance indicators
- RTP also directs PSRC to use RSAP to inform regional and local planning, including criteria used for the project selection process and the Regional Capacity Project List



Guiding Principle – Safe System Approach

- Focus is on investing in crash prevention AND minimizing harm when crashes do happen
 - Identify and address risks vs. react solely based on crash history
 - Focus on preventing deaths and serious injuries over simply preventing crashes
 - Design roadways that anticipate human mistakes and reduce crash severity in addition to educating system users



Work to Date

- PSRC and 6 local agencies jointly applied and were awarded \$4.9 M for safety planning via USDOT Safe Streets and Roads For All Grant Program (SS4A)
 - PSRC is using its portion of grant funding (\$2.7 M) to develop a Regional Safety Action Plan, with consultant support
- PSRC held first Regional Safety Summit June 2023 – 140 attendees
 - Purpose was to convene stakeholders to advance the conversation on how to achieve zero roadway fatalities and serious injuries
 - Feedback from Summit will inform development of the RSAP



SS4A Action Plan Requirements

- Regional Safety Action Plan will include all of these required elements:
 - ✓ Commitment and goal setting
 - ✓ Safety analysis
 - ✓ Engagement and collaboration
 - ✓ Equity considerations
 - ✓ Policy assessment
 - ✓ Development of strategies and actions
 - ✓ Monitoring and tracking



What is a Regional Safety Action Plan?

- Regional safety action plans are complementary to local safety action plans
- Will provide regional scale analysis and tracking
- Will provide context-specific options for strategies and actions based on different typologies
- Local plans have location-specific project and program lists
 - Six jurisdictions in the region were awarded Action Plan funds in the 1st year of SS4A, while ten more have applied in the 2nd year



Scope of Work Outline – Overview

- What challenges do we face? What problems are we trying to address?
 - Highlight trends, negative impacts and costs
- What is a Regional Safety Action Plan, what does it do, and what goals and policies is it guided by?
 - Develop a regional culture of transportation safety
 - Provide data and resources to support the development and implementation of local safety plans, projects and programs



SOW Outline - Safety and Equity Analyses

- What and where are the regional safety issues?
- Highlight what data we are looking at and what methods we are using
 - Will examine fatalities, serious injuries, and high injury network, and explore other options for data that make sense to analyze at regional scale
- Focus on typologies for more context and to tease out key differences in terms of incident rates, etc.
 - Types of facilities, user groups, demographics (equity component), community context



SOW Outline – Engagement and Collaboration

- Build on the Safety Summit – we want to hear from more people
- Use an array of outreach efforts (events, workshops, focus groups, online surveys, etc.) to make sure we are hearing from everybody
 - Include equity focus groups and other stakeholder groups not usually at the table
- Describe why we are engaging and what we heard
 - Get regional perspectives, identify general public's thoughts on safety issues, priorities, and what we should be doing



SOW Outline - Strategies and Actions

- Menu of options including strategies, actions, and proven countermeasures
- Provide toolkits that jurisdictions can use to choose the most effective approach depending on specific context, scale and other key typologies
- Will consider coming up with specific examples or case studies to apply what we've learned through our analyses



SOW Outline - Implementation & Next Steps

- Highlight key roles and responsibilities to implement this plan
- Commit to monitoring and tracking progress
- We want this plan to be a call to action, so we will make sure there are implementation tools and next steps available
 - Provide resources to help agencies develop approaches and implement their projects/programs



Regional Safety Plan – Next Steps

- Request for Proposals (RFP) for technical consultant support released October 4th; engagement support RFP in coming months
 - Consultant(s) selection by the end of 2023
- Engage in substantive work including research, analysis and other plan content development
 - Engagement opportunities throughout
- Target Plan Adoption Date: First quarter of 2025



Contact Info

Gary Simonson

Senior Planner

gsimonson@psrc.org

(206) 971-3276

