

Equity Work Program

Growth Management Policy Board (GMPB)

February 1, 2024



We are leaders in the region to realize equity for all. Diversity, racial equity and inclusion are integrated into how we carry out all our work.

psrc.org/equity

Presentation Overview

- **EAC Outreach and Selection Process**
- **Transportation Equity Pilot**
- **Regional Equity Strategy**
- **Q&A**



Regional Equity Strategy

The Strategy includes a suite of resources co-created with the Equity Advisory Committee. It will provide guidance to help members and staff work towards the region's equity goals.



Capacity Building

- ▶ Learning Opportunities
- ▶ Prioritizing Equity
- ▶ Inclusive Procurement
- ▶ Hiring and Retention



Data and Research

- ▶ Equity Tracker
- ▶ Data and Analysis
- ▶ Legacy of Structural Racism Interactive Report



Community Engagement

- ▶ Equity Advisory Committee
- ▶ Anti-Displacement Organizations Report
- ▶ Equitable Engagement Guidance



Best Practices

- ▶ Racial Equity Impact Assessment
- ▶ Equity Planning Resources

Operating Procedures

- Up to **20 members**
- **At least two members** from each of the **four counties**
- **Residents, governmental and community-based organizations** providing lived experiences and perspectives
- **Co-create** products and programs (e.g., **Equity Pilot Program** for FHWA funds)
- **Advise** PSRC boards and committees on policies and programs with an equity lens.

2024 Cohort Outreach and Selection Process

Fall 2023

- Solicited applications
- Blogs & social media posts
- Translated materials
- CBO/Member Outreach



2024 Cohort Outreach and Selection Process

Fall 2022

- 13 applications

Fall 2023

- 36 applications



Proposed 2024 EAC Roster

Equity Advisory Committee

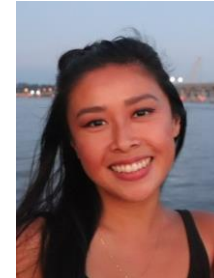
- Center equity in PSRC work
- Involve stakeholders early and often
- Co-create Equity Strategy



Keshreeyaji Oswal



Ben Sung Henry



Annie Tran



Debbie Lacy



Hien "Elly" Trinh



Maria Fergus



Lisa Espinosa



Megan Espinoza



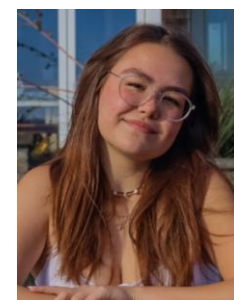
Autrina Martindale



Jewel Shepherd-Sampson



Shannon Turner



Lily Distelhorst



Laurenne Sayles



Julius Moss



Julia Jannon-Shields



Lupe Valtierra-Prieto



Corey Orvold



Thanh Nguyen



Michelle Stewart



Mindy Woods

Equity Advisory Committee Members

- Center equity in PSRC work
- Involve stakeholders early and often
- Co-create Equity Strategy



Keshreeyaji Oswal



Ben Sung Henry



Annie Tran



Debbie Lacy



Hien "Elly" Trinh



Maria Fergus



Lisa Espinosa



Megan Espinoza



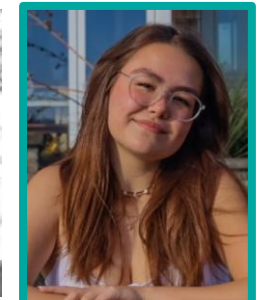
Autrina Martindale



Jewel Shepherd-Sampson



Shannon Turner



Lily Distelhorst



Laurenne Sayles



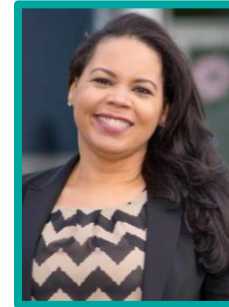
Julius Moss



Julia Jannon-Shields



Lupe Valtierra-Prieto



Corey Orvold



Thanh Nguyen



Michelle Stewart



Mindy Woods

Equity Advisory Committee Members

- Center equity in PSRC work
- Involve stakeholders early and often
- Co-create Equity Strategy



Keshreeyaji Oswal



Ben Sung Henry



Annie Tran



Debbie Lacy



Hien "Elly" Trinh



Maria Fergus



Lisa Espinosa



Megan Espinoza



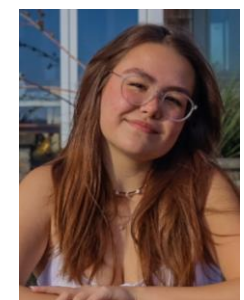
Autrina Martindale



Jewel Shepherd-Sampson



Shannon Turner



Lily Distelhorst



Laurenne Sayles



Julius Moss



Julia Jannon-Shields



Lupe Valtierra-Prieto



Corey Orvold



Thanh Nguyen



Michelle Stewart



Mindy Woods

Equity Advisory Committee Members

- Center equity in PSRC work
- Involve stakeholders early and often
- Co-create Equity Strategy



Keshreeyaji Oswal



Ben Sung Henry



Annie Tran



Debbie Lacy



Hien "Elly" Trinh



Maria Fergus



Lisa Espinosa



Megan Espinoza



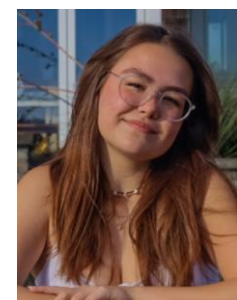
Autrina Martindale



Jewel Shepherd-Sampson



Shannon Turner



Lily Distelhorst



Laurenne Sayles



Julius Moss



Julia Jannon-Shields



Lupe Valtierra-Prieto



Corey Orvold



Thanh Nguyen



Michelle Stewart



Mindy Woods

Equity Advisory Committee Members

- Center equity in PSRC work
- Involve stakeholders early and often
- Co-create Equity Strategy



Keshreeyaji Oswal



Ben Sung Henry



Annie Tran



Debbie Lacy



Hien "Elly" Trinh



Maria Fergus



Lisa Espinosa



Megan Espinoza



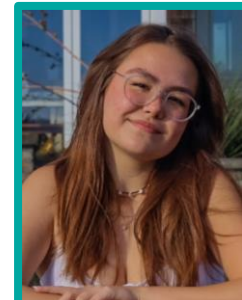
Autrina Martindale



Jewel Shepherd-Sampson



Shannon Turner



Lily Distelhorst



Laurenne Sayles



Julius Moss



Julia Jannon-Shields



Lupe Valtierra-Prieto



Corey Orvold



Thanh Nguyen



Michelle Stewart



Mindy Woods

Equity Advisory Committee Members

- Center equity in PSRC work
- Involve stakeholders early and often
- Co-create Equity Strategy



Keshreeyaji Oswal



Ben Sung Henry



Annie Tran



Debbie Lacy



Hien "Elly" Trinh



Maria Fergus



Lisa Espinosa



Megan Espinoza



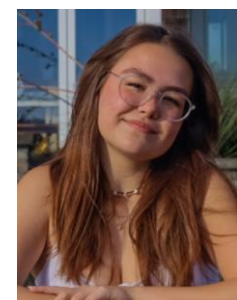
Autrina Martindale



Jewel Shepherd-Sampson



Shannon Turner



Lily Distelhorst



Laurenne Sayles



Julius Moss



Julia Jannon-Shields



Lupe Valtierra-Prieto



Corey Orvold



Thanh Nguyen



Michelle Stewart

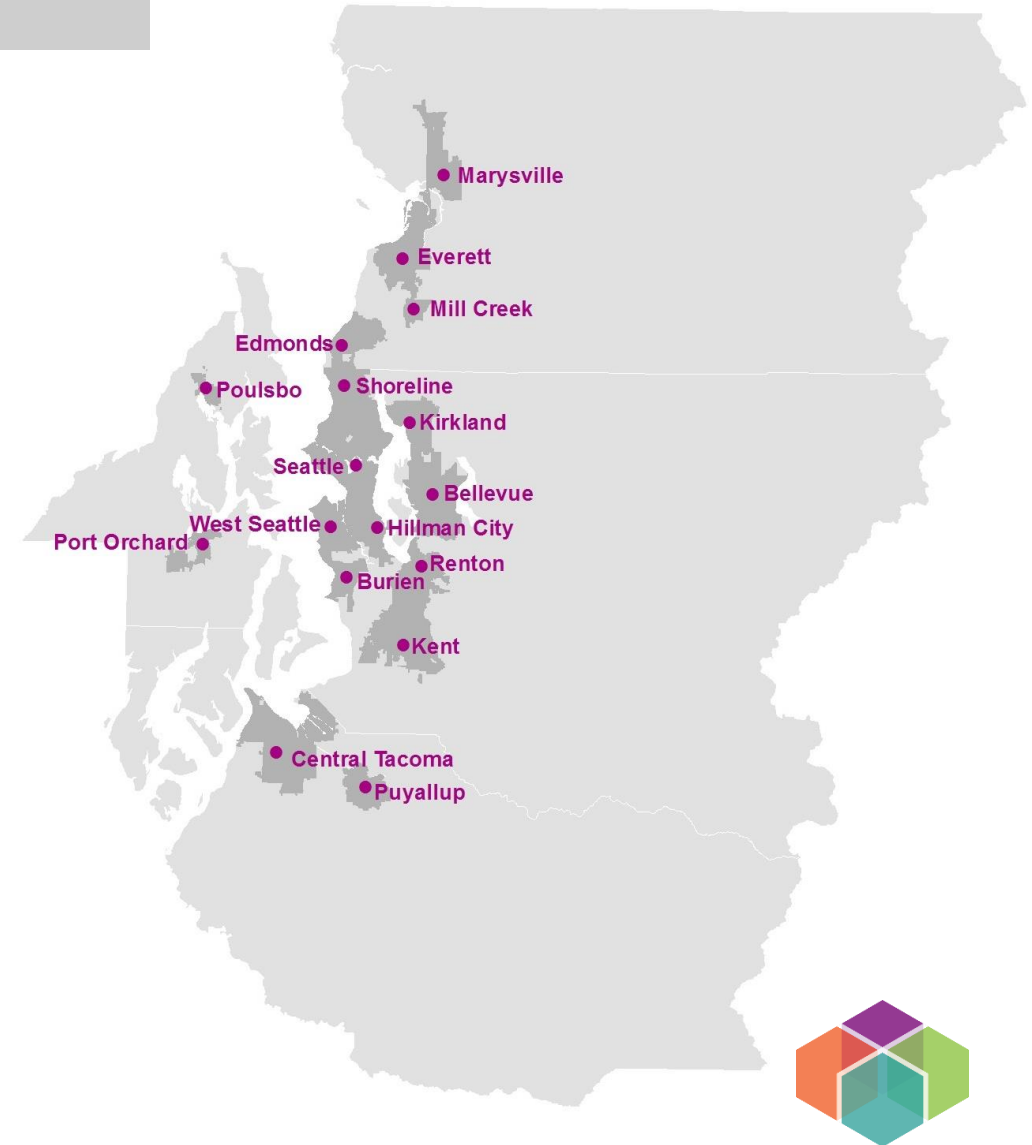


Mindy Woods

Regional Representation

Counties

- King: 8 members
- Kitsap: 3 members
- Pierce: 4 members
- Snohomish: 5 members



<https://www.psrc.org/committee/equity-advisory-committee>

Transportation Equity Pilot

- \$6 million set-aside for a Transportation Equity Pilot Program
- Cap funding request at \$1,000,000
- Co-designed with EAC
- Evaluate current project selection process
- Suggested revisions for eligibility, criteria, guidance, etc.



2023 Equity Pilot Schedule

Phase 1: Understanding



Jan: Project
Selection
Introduction

Feb: Learn from
other MPOs

March: Project
Evaluation
Simulation

Phase 2: Designing



April – May: Pilot
Co-Creation

June – Aug:
Design Pilot with
EAC Subgroup

Sept: Review with
Full EAC & Develop
Call Materials

Phase 3: Implementing



Sept: Release Pilot

Sept – Nov:
Conduct Pilot

Nov: EAC Pilot
Process
Recommendations

Phase 4: Planning



Nov – Dec: EAC
Process and Project
Recommendations

Dec: Board Review
of EAC
Recommendations

Jan 2024: Policy
Framework
Adoption

2023 Equity Pilot Schedule

Phase 1:
Understanding



Jan: Project selection introduction

Feb: Learn from other MPOs

March: Project evaluation simulation

Phase 2:
Designing



April – May: Pilot Co-Creation

June – Aug: Design Pilot

Sept: Review with EAC and Develop Call Materials

Phase 3:
Implementing



Sept: Release Pilot

Sept – Oct: Conduct Pilot

Nov: EAC Pilot Process Recommendations

Phase 4:
Planning



Nov – Dec: EAC Process and Project Recommendations

Dec: Board Review of EAC Recommendations

Jan 2024: Policy Framework Adoption

2023 Equity Pilot Schedule

Phase 1:
Understanding



Phase 2:
Designing



Phase 3:
Implementing



Phase 4:
Planning



Jan: Project
Selection
Introduction

Feb: Learn from
other MPOs

March: Project
Evaluation
Simulation

April – May: Pilot
Co-Creation

July – Aug: Design
Pilot with EAC
subgroup

Sept: Review with
Full EAC & Develop
Call Materials

Sept: Release Pilot

Sept – Nov:
Conduct Pilot

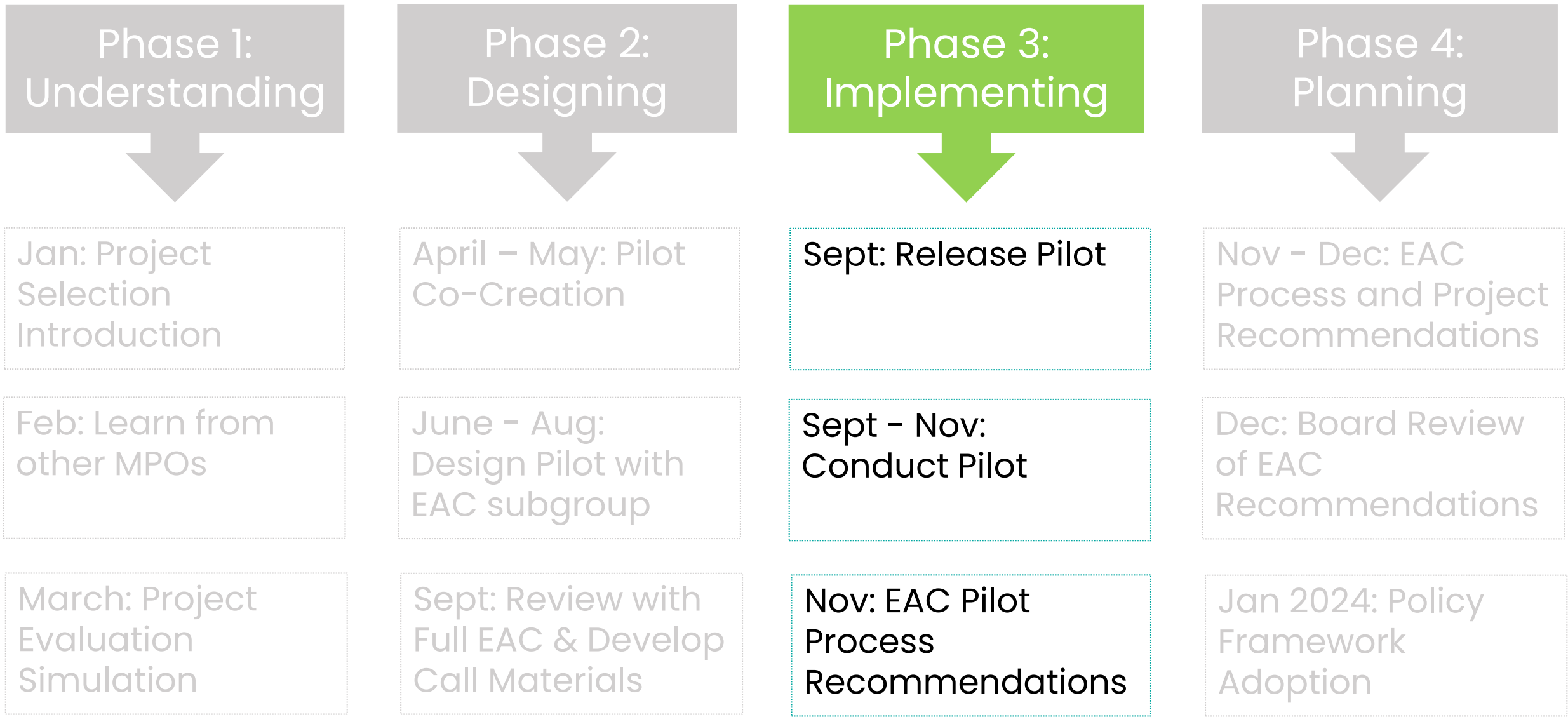
Nov: EAC Pilot
Process
Recommendations

Nov – Dec: EAC
Process
Recommendations

Dec: Board Review
of EAC
Recommendations

Jan 2024: Policy
Framework
Adoption

2023 Equity Pilot Schedule



2023 Equity Pilot Schedule

Phase 1:
Understanding



Jan: Project
Selection
Introduction

Feb: Learn from
other MPOs

March: Project
Evaluation
Simulation

Phase 2:
Designing



April – May: Pilot
Co-Creation

June – Aug:
Design Pilot with
EAC subgroup

Sept: Review with
Full EAC & Develop
Call Materials

Phase 3:
Implementing



Sept: Release Pilot

Sept – Nov:
Conduct Pilot

Nov: EAC Pilot
Process
Recommendations

Phase 4:
Planning



Nov – Dec: EAC
Process and Project
Recommendations

Dec: Board Review
of EAC
Recommendations

Jan 2024: Policy
Framework
Adoption

Equity Pilot Framework

EAC feedback: Test out two approaches for the pilot

1. Updating existing structure (Pathway 1)

- Update criteria and guidance
 - EFAs | Outreach | Displacement
- Increase equity criterion point values

2. Equity woven throughout all criteria (Pathway 2)

- Same criteria and guidance updates
- Equity incorporated throughout
 - Jobs | Safety



Equity Focus Areas (EFAs)

Based on foundational work in

VISION 2050 & the Regional Transportation Plan (RTP)

Six demographics used to measure and track disparities

**People of
Color**

**People with
Low Incomes**

**People with
Disabilities**

Youth
(Ages 5-17)

Older Adults
(Age 65+)

**People with
limited English
proficiency**
(LEP)

Equity Focus Areas (EFAs)

have higher proportions of members of these groups



Equity Focus Areas (EFAs)

Figure 1. People of Color, 2019

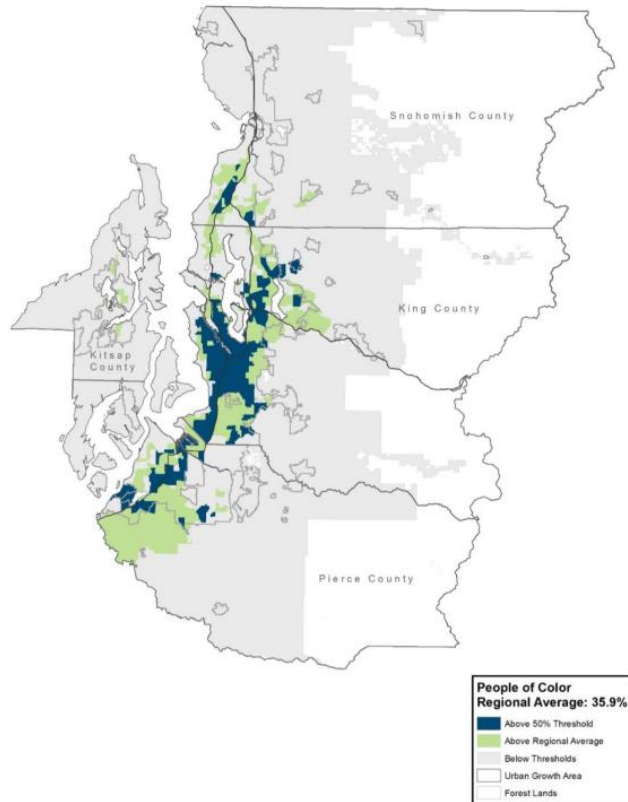


Figure 2. People with Low Incomes, 2019

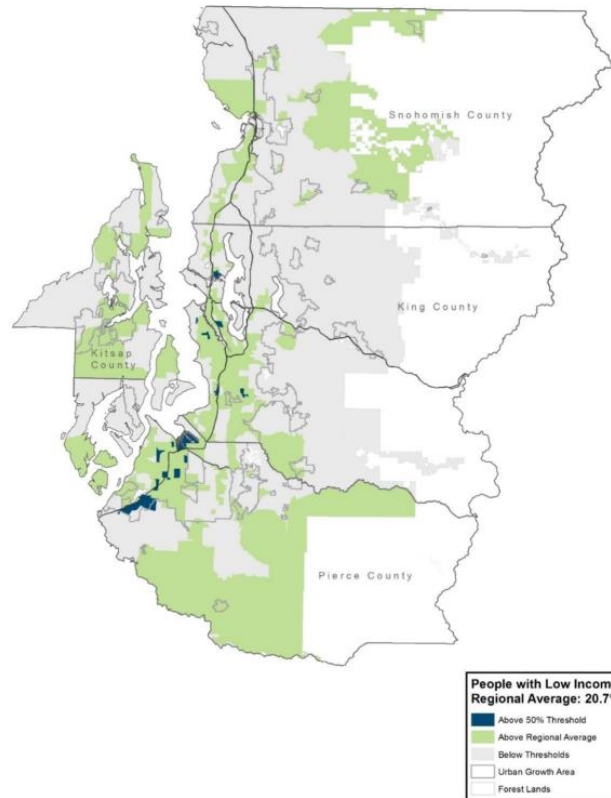
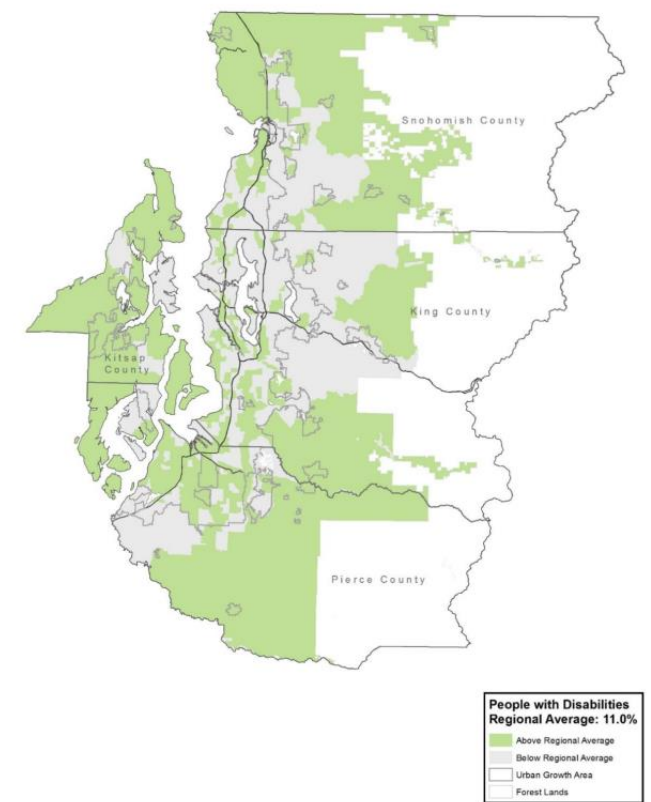


Figure 4. People with Disabilities, 2019



Equity Focus Areas (EFAs)

Figure 6. Youth, 2019

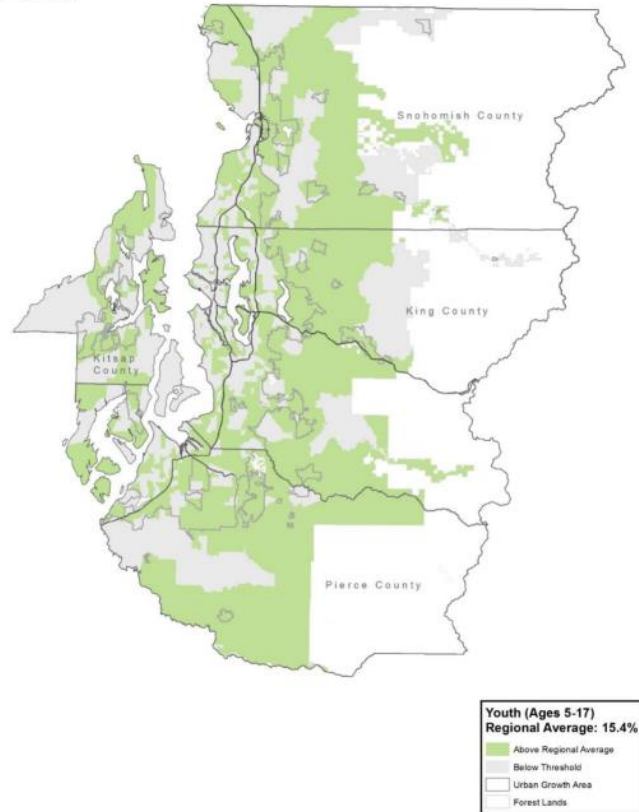


Figure 8. Older Adults, 2019

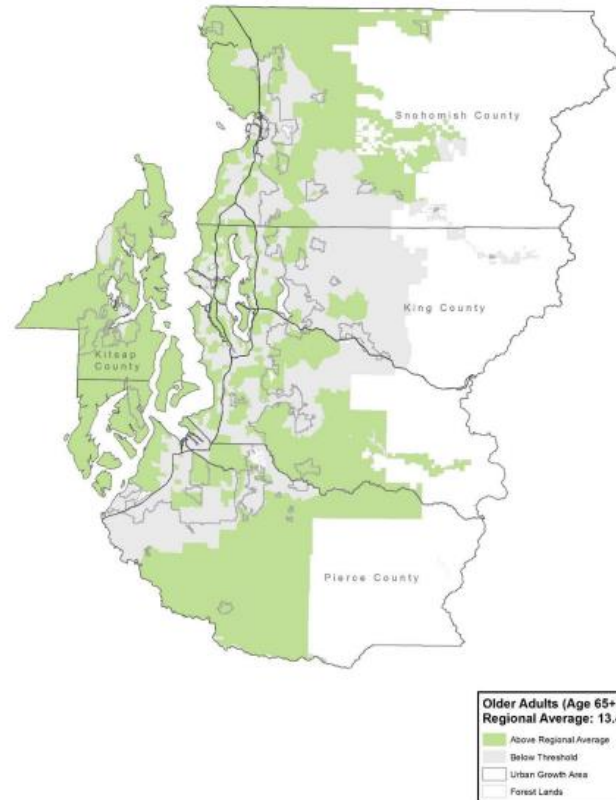
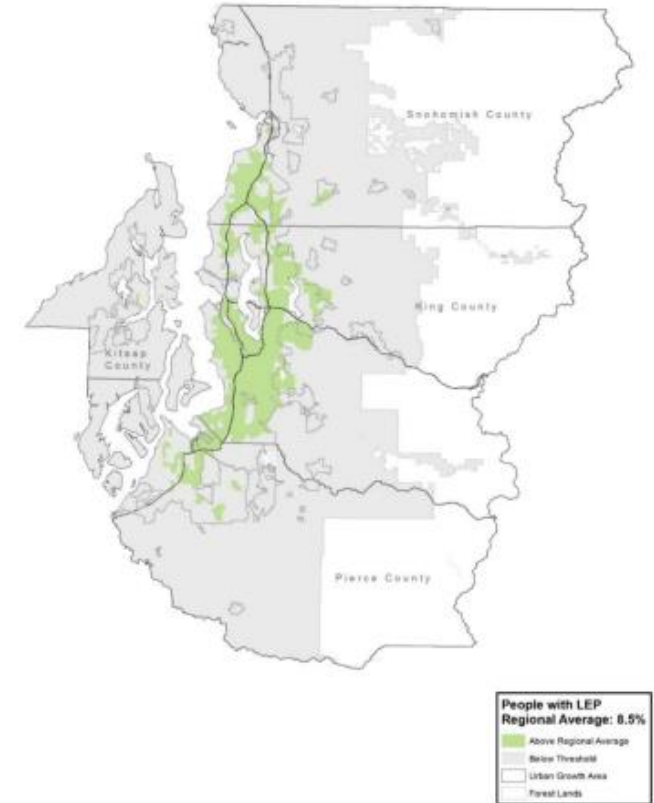


Figure 10. People with LEP, 2019



Equity Pilot Logistics

- Every project responded to **both pathways**
- **One project per agency** to be submitted
- **\$6.01 million available**
 - **Cap funding** request at **\$1,000,000**
 - Allowed for a diversity of project types and sizes
- Total of **8 projects** submitted requesting a total of **\$6,354,283**



Equity Pilot

EAC Recommendations



EAC Recommendations

Criteria Improvements



EAC Recommendations

Pathway 2

- Description of how the project will expand **access to jobs** for the Equity Focus Areas (EFAs)
- Description of public **outreach** process reflected in PSRC's **Equitable Engagement Guidance**
- Identification of **anti-displacement strategies** reflected in the Housing Opportunities by Place (HOP) tool
- Description of **safety issues** experienced by EFAs addressed by the project



EAC Recommendations

- Description of how the project will expand **access to jobs** for the marginalized communities

CRITERIA
Development of Centers
Circulation, Mobility and Accessibility
Outreach and Displacement
Safety
Air Quality / Climate Change
Project Readiness / Financial Plan



EAC Recommendations

- Description of public outreach process reflected in PSRC's Equitable Engagement Guidance
- Identification of anti-displacement strategies reflected in the Housing Opportunities by Place (HOP) tool

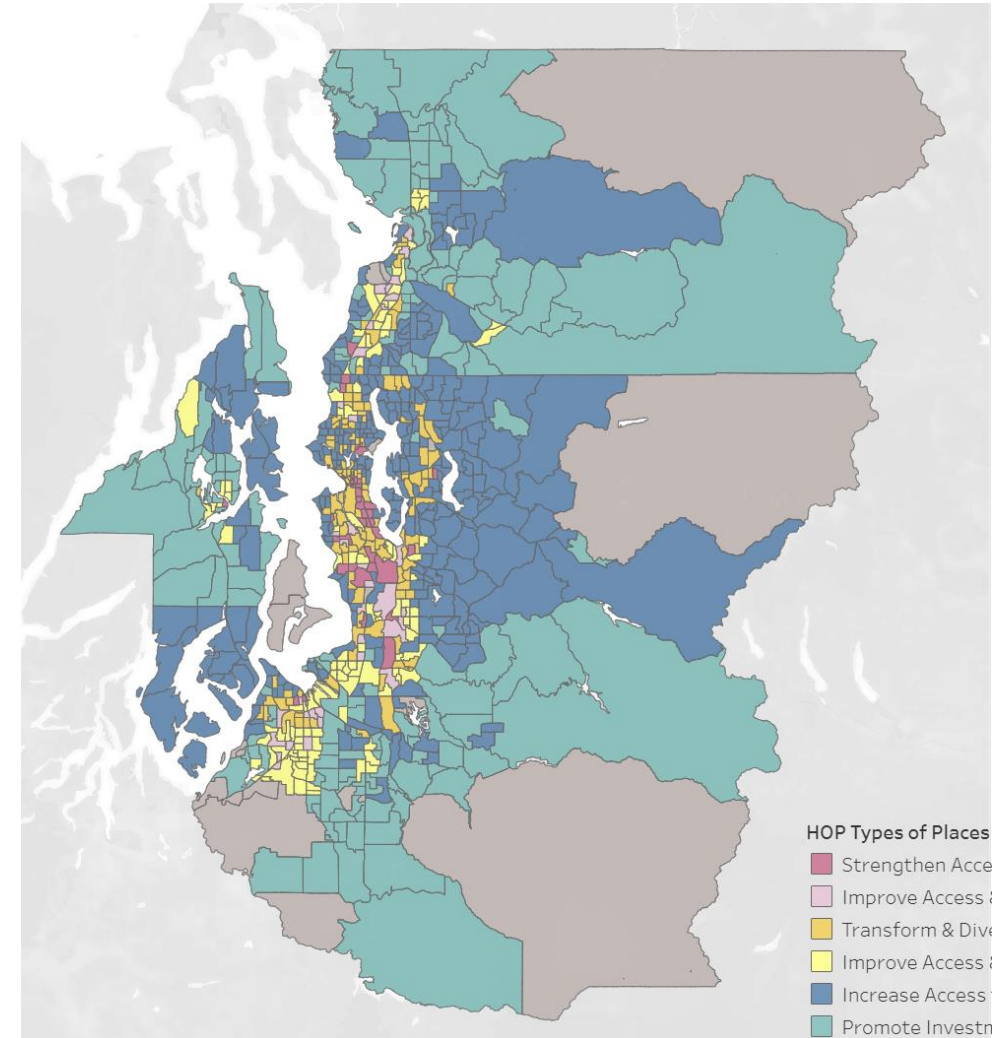
CRITERIA
Development of Centers
Circulation, Mobility and Accessibility
Outreach and Displacement
Safety
Air Quality / Climate Change
Project Readiness / Financial Plan



EAC Recommendations

Displacement

- Housing Opportunities by Place (HOP) is a PSRC tool that uses typologies to classify anti-displacement strategies that effectively address housing access and affordability.
- Each Census Tract in the region is categorized into one of six typologies:
 - Promote Investment & Opportunity
 - Improve Access & Housing Choices
 - Improve Access & Affordability
 - Increase Access to Single Family Neighborhoods
 - Transform & Diversify
 - Strengthen Access & Affordability



EAC Recommendations

- Description of **safety issues** experienced by EFAs addressed by the project
- Increase Points

CRITERIA
Development of Centers
Circulation, Mobility and Accessibility
Outreach and Displacement
Safety
Air Quality / Climate Change
Project Readiness / Financial Plan



EAC Recommendation Funding Process



Funding Requests

Total Available: \$6.01 million

Sponsor	Project Title	Request
Tacoma	South 38th St. & South Cedar St. Pedestrian Safety Improvements	\$ 1,000,000
Seattle	Beacon Avenue South Safety Project	\$ 865,000
Federal Way	BPA Trail - City Center Extension	\$ 600,000
Snohomish County	Center Road Pedestrian Improvements	\$ 485,000
WSDOT	SR 99 Preliminary Design Study	\$ 1,000,000
Kent	Benson Corridor 20-minute Neighborhood Plan	\$ 750,000
Pierce Transit	Equitable Bus Shelter Program	\$ 1,000,000
Tulalip Tribes	Marine Drive / Hermosa Heights Safety Improvements	\$ 654,000
Total		\$ 6,354,000



Regional Equity Strategy

Regional Equity Strategy

All Resources Located Here:

<https://www.psrc.org/equity>

The Strategy includes a suite of resources co-created with the Equity Advisory Committee. It will provide guidance to help members and staff work towards the region's equity goals.



Community Engagement

- ▶ Equity Advisory Committee
- ▶ Anti-Displacement Organizations Report
- ▶ Equitable Engagement Guidance (**Available Now!**)



Capacity Building

- ▶ Learning Opportunities
- ▶ Prioritizing Equity
- ▶ Inclusive Procurement
- ▶ Hiring and Retention



Best Practices

- ▶ Racial Equity Impact Assessment (**Available Now!**)
- ▶ Equity Planning Resources (**Available Now!**)



Data and Research

- ▶ Equity Tracker
- ▶ Data and Analysis
- ▶ Legacy of Structural Racism Interactive Report (**Available Now!**)



Community Engagement



Equity Advisory Committee (Launched Fall 2021)

Co-create products with staff and the Executive Board, as well as advise PSRC committees and boards on policies and programs with an equity lens.



Anti-Displacement Organizations Report (Available Now)

Develop a directory to connect member agencies and interested parties to organizations that are developing locally appropriate and community-driven solutions for displacement. Explore potential opportunities to support these efforts.



Equitable Engagement Guidance (Available Now)

An equitable engagement guidebook that empowers member agencies and PSRC staff to develop and implement engagement plans for marginalized communities.



Data and Research



Equity Tracker (Winter 2024)

Public facing dashboard that quantifies equity related policies in VISION 2050 to track, explain, and share solutions for disparities.



Data and Analysis (Ongoing)

Conduct research on racial equity and provide data support for other REAP teams.



Legacy of Structural Racism Interactive Report (Available Now)

Historical overview of structural racism in the Puget Sound region and how this history informs existing disparities.

Potential Topics for 2024

- Regional Safety Plan
- Comprehensive Plan Review Process
- Household Travel Survey
- Regional Transportation Plan
- Regional Housing Strategy Implementation



Thank You!

Charles Patton, PhD
Program Manager, Equity Policy & Initiatives
cpatton@psrc.org



Puget Sound Regional Council